

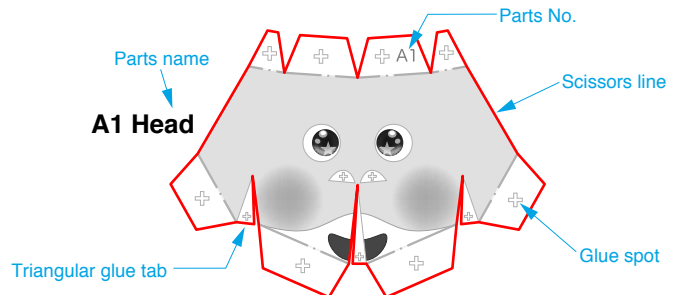


Assemble the head

Use pattern: Page2.

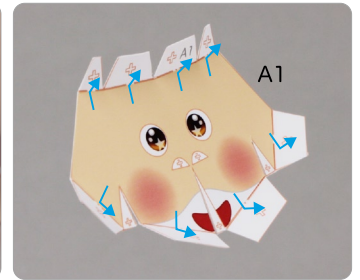
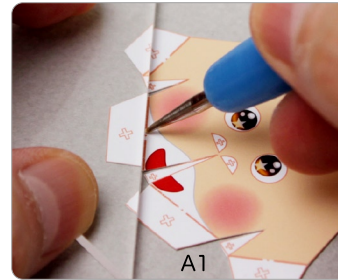
① Cut out A1 by cutting along the lines.

★ Cut along the line marked ———.



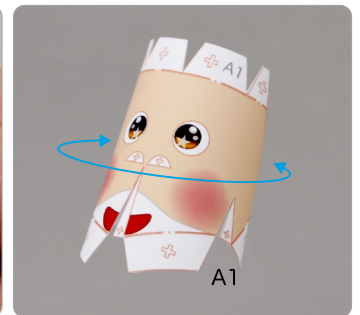
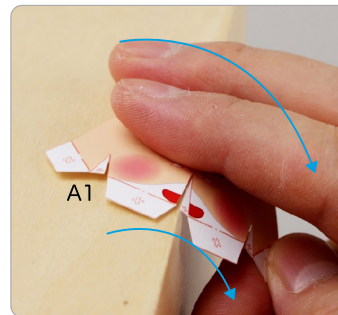
② Make a valley fold on A1.

★ Trace along the valley fold line with a pencil, scoring it to make it easier to fold.



③ The parts will be easier to assemble if curled.

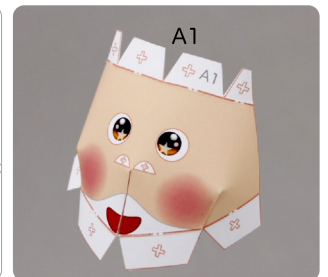
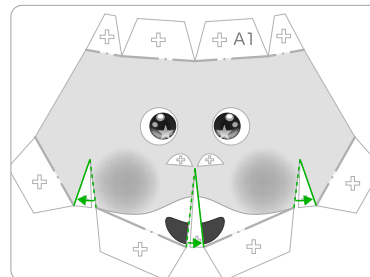
★ Using the photo as a guide, move your fingers in the direction of the arrow, adjusting the pressure to curl the paper.



④ Add a slight curl to A1 when attaching it.

★ Attach the triangular glue tabs so that the front side becomes convex.

★ Using the photo as a guide, attach in the direction of the arrow.



Tools

Scissors
Paste, or woodwork glue
Stencil pen, or bodkin
Ruler

Notation Key

————— Scissors line
..... Mountain fold
- - - - - Valley fold
+ Glue spot
○ Glue the back
A1, B1 Parts No.

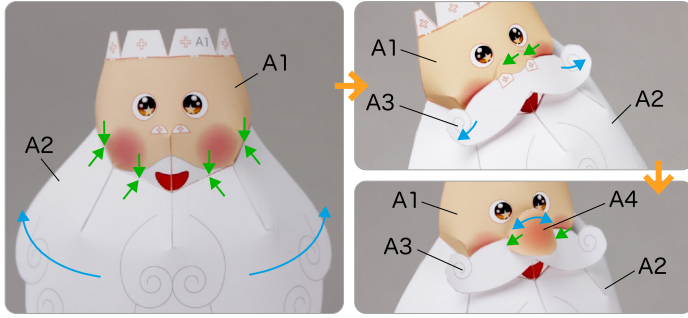
◆ In the assembly instructions, Santa Claus is separated into blocks A (head), B (jacket), C (arms), D (legs), and E (chimney, sack and presents) on pages 1 to 4. Next, the Christmas sleigh is separated into blocks A (box), B (armrests and sleigh runners), and C (belts) on pages 5 to 7. Complete the diorama by following the assembly instructions for each block.

◆ ★ marks a basic assembly technique that remains the same regardless of the part.
Instructions are printed only for the first instance.

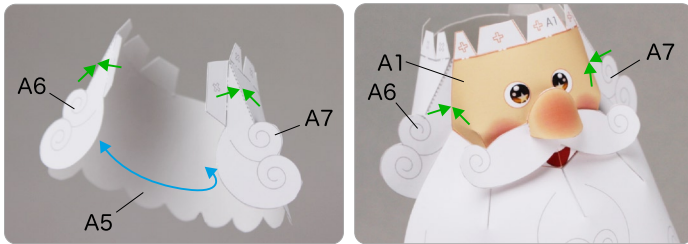
<Caution>

- ✖ Keep scissors and glue away from small children.
- ✖ Be careful not to cut your fingers when using scissors.

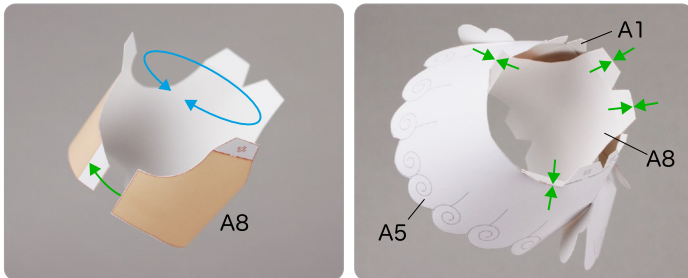
⑤ Attach A1 and A2 together. Glue A3 and A4 to A1.



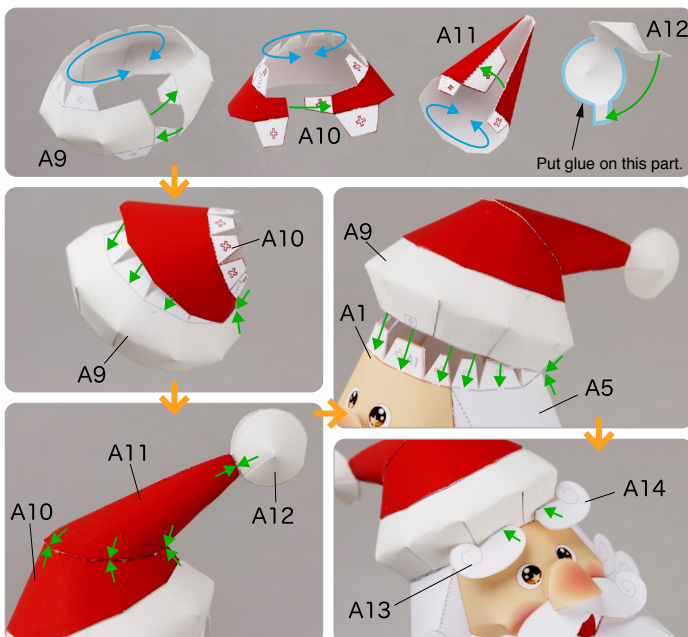
⑥ Attach A5, A6, and A7 together and attach them to A1.



⑦ Assemble A8 and attach it to the head part.



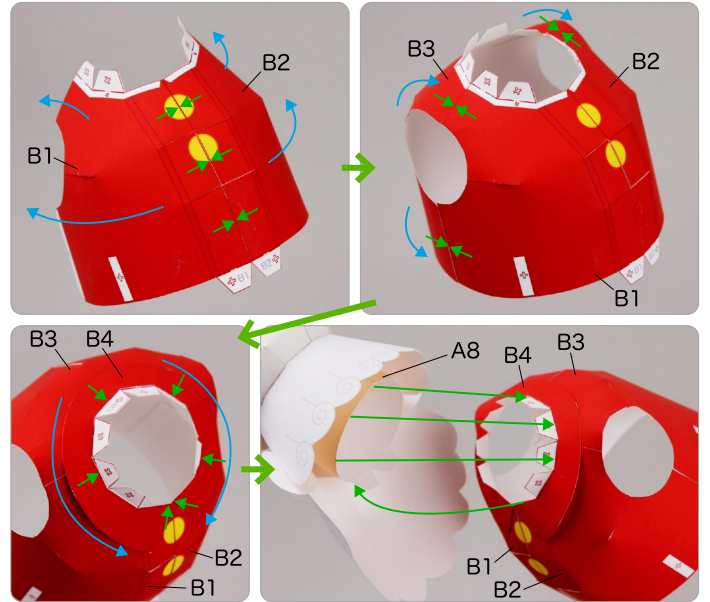
⑧ Assemble from A9 to A12 and attach them together. Then attach to the head part. Glue A13 and A14 to A9 to complete the head part.



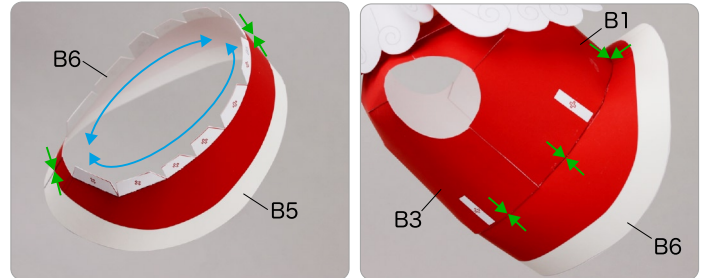
B Make the jacket

Use pattern: Page3 / Page4.

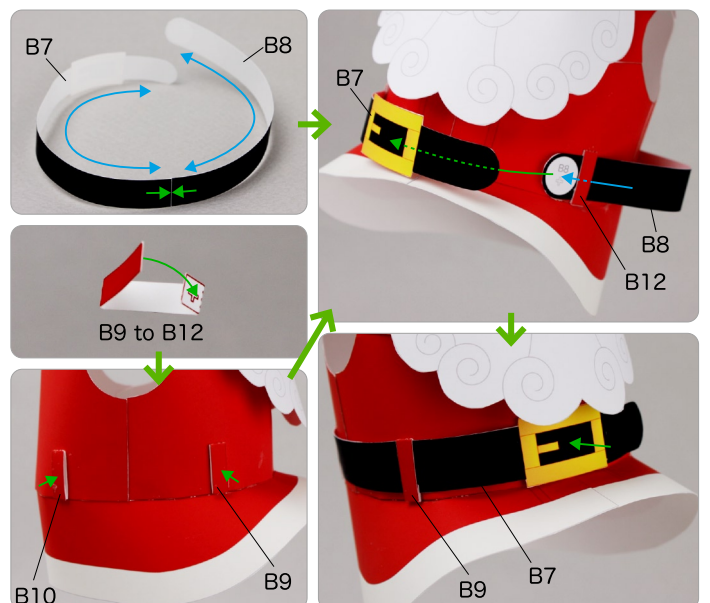
① Attach B1, B2, B3 and B4 together and attach it to A8.



② Attach B5 and B6 together and attach it to the jacket.



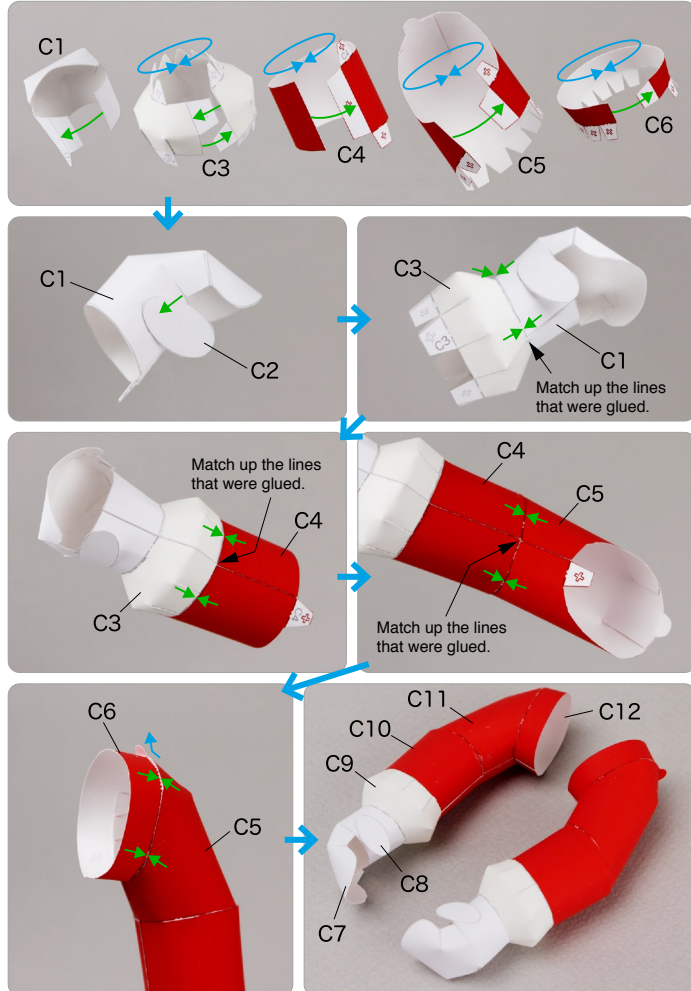
③ Attach B7 and B8 together. Then assemble from B9 to B12, glue them to the jacket, and pull B7 and B8 through the loops.



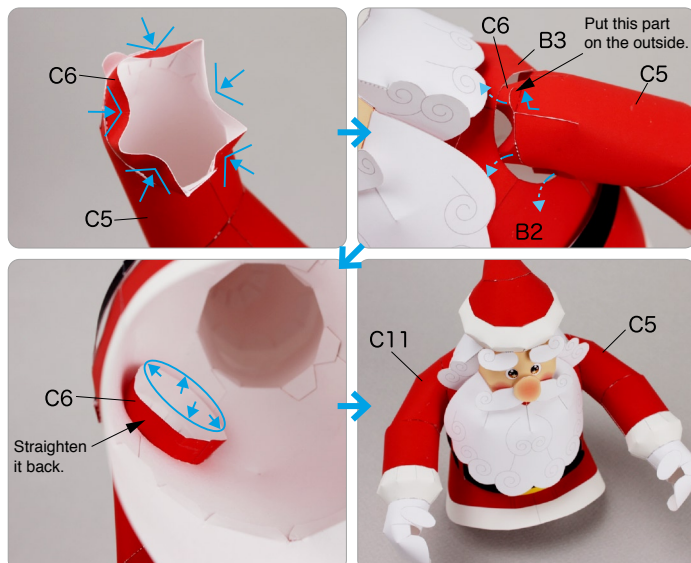
C Make the arms

Use pattern: Page5.

- ① Assemble from C1 to C6. Attach them together. Attach from C7 to C12 in the same way.



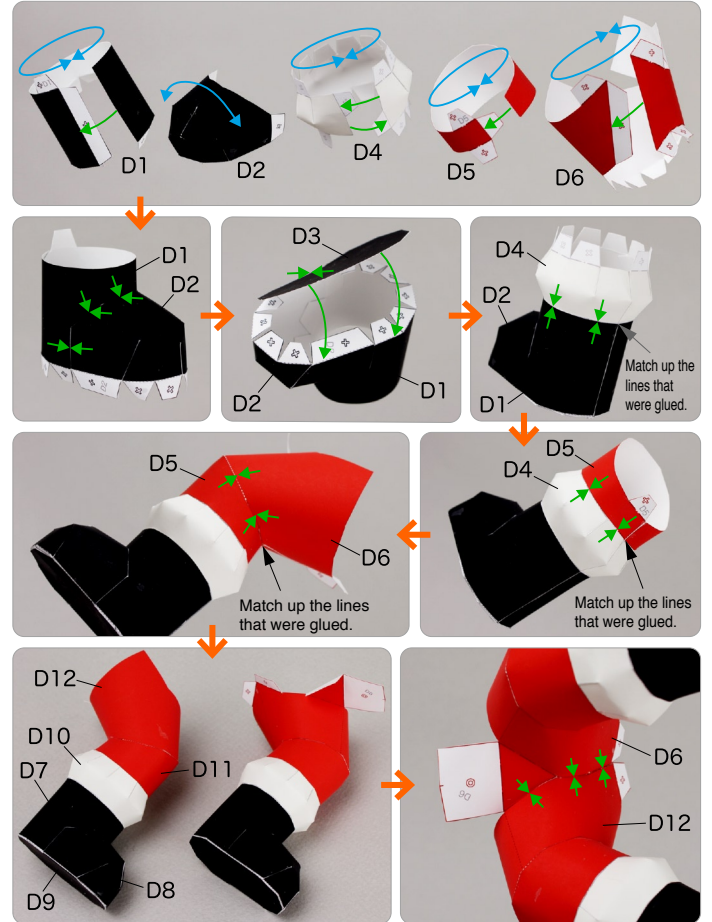
- ② Fit the arm into the jacket to complete the arm.



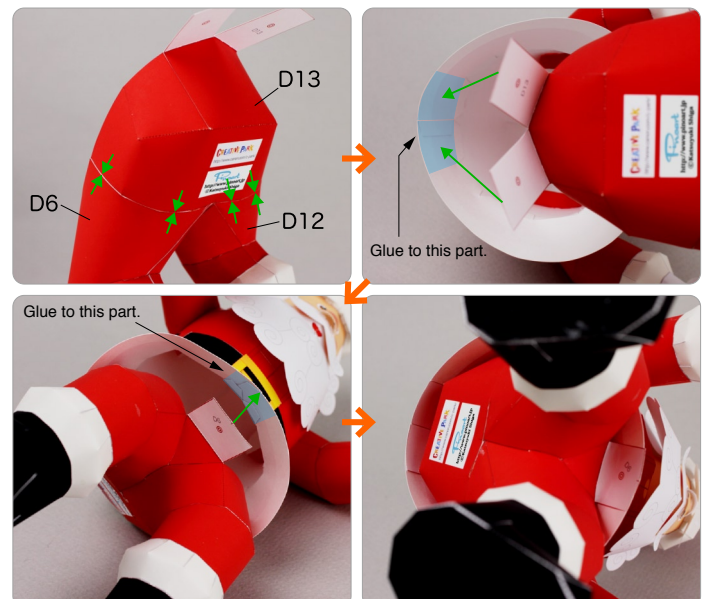
D Make the legs

Use pattern: Page6 / Page7.

- ① Assemble from D1 to D6. Attach them together. Attach from D7 to D12 together in the same way. Then attach D6 and D12 together.



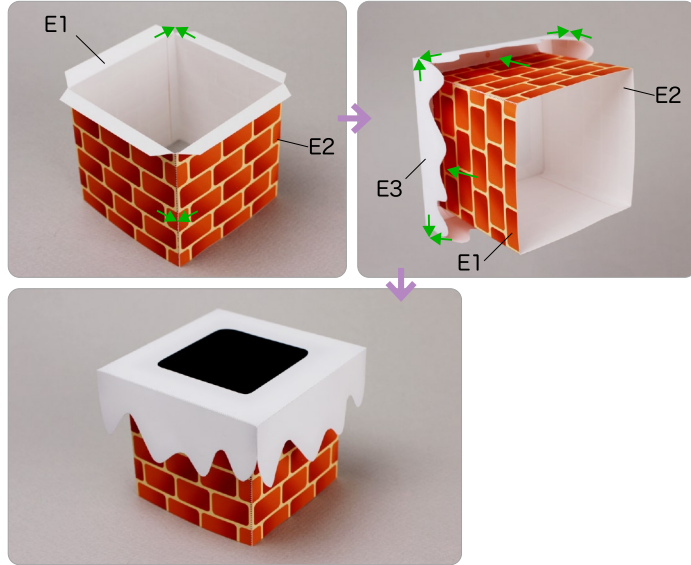
- ② Attach the legs to D13. Attach it to the jacket to complete the legs.



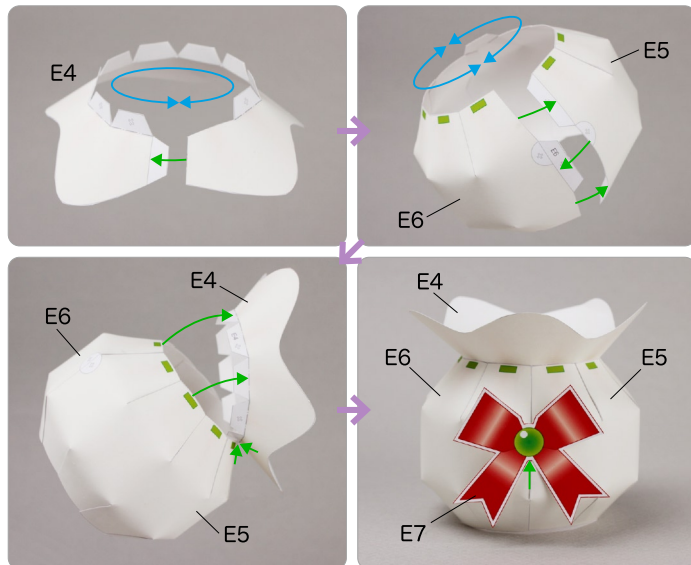
E Make the chimney, sack, and presents

Use pattern: Page8 to Page12.

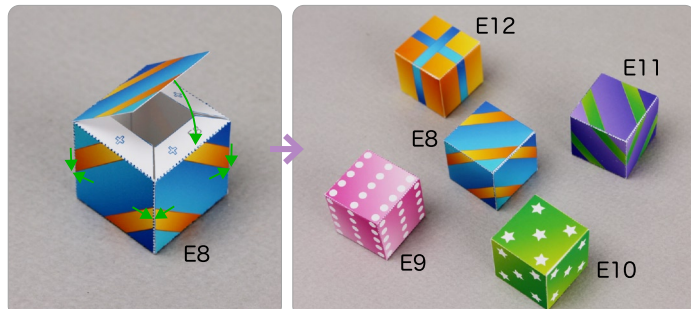
① Attach E1 and E2 together. Then assemble and attach E3.



② Assemble E4, E5, and E6. Attach them together. Then glue E7.



③ Assemble E8. Then assemble from E9 to E12 in the same way.



④ Glue E13 and E14 together. Then glue from E15 to E26 together in the same way.



⑤ Decorate the sack as shown in the picture and glue the pieces together.



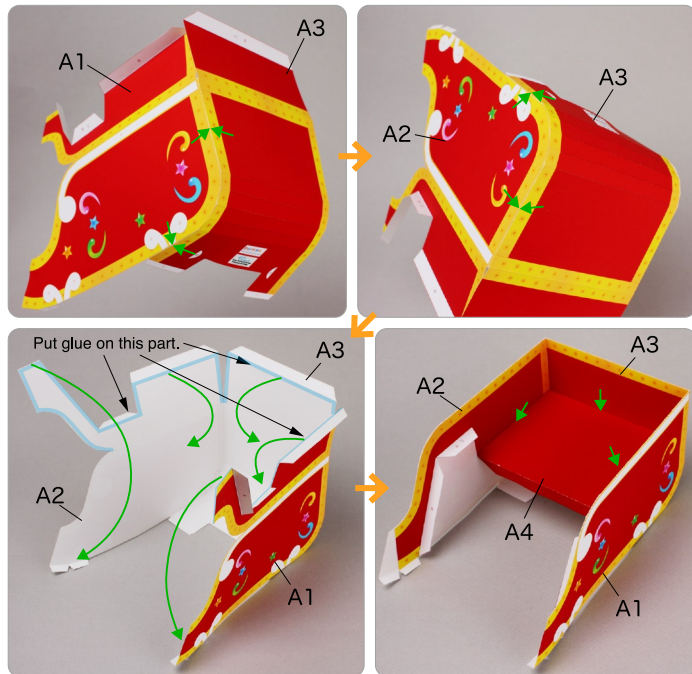
⑥ Sit Santa Claus down in the chimney and you're done.



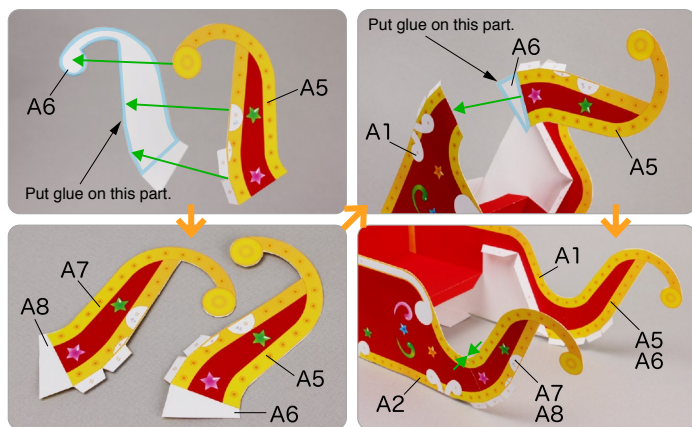
A Make the box

Use pattern: Page2 to Page7.

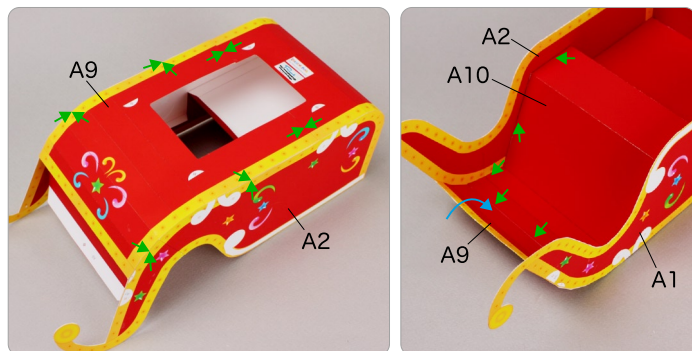
① Attach A1, A2, A3 and A4 together.



② Glue A5 and A6 together and A7 and A8 together. Attach them to the box.



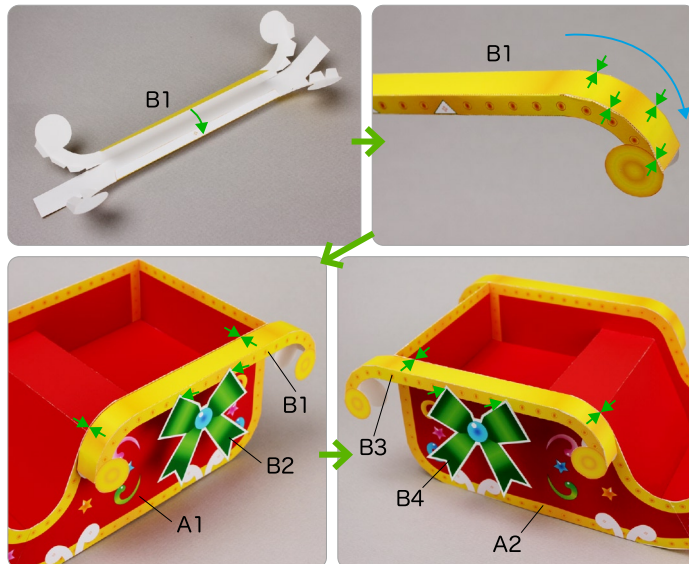
③ Attach A9 and A10 to the box.



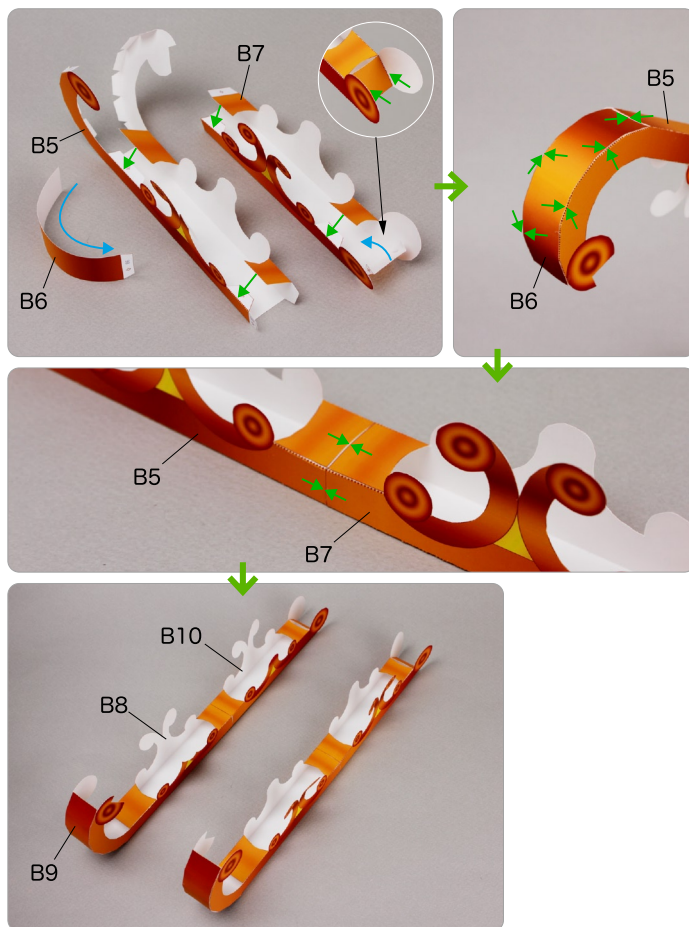
B Make the armrests and sleigh runners

Use pattern: Page8 to Page11.

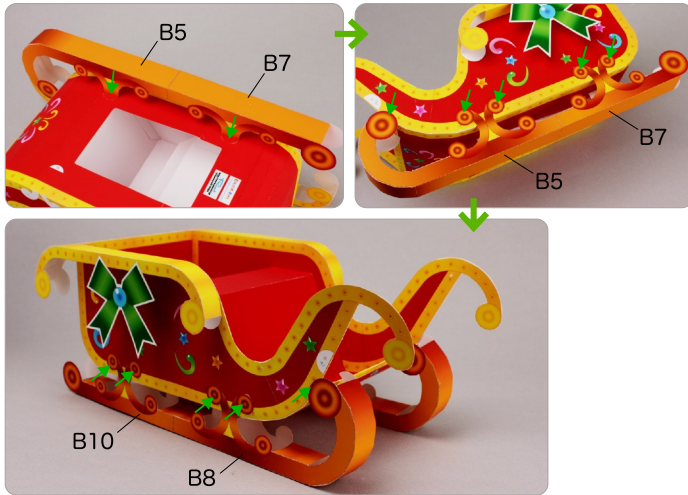
① Assemble B1 and B3. Then glue B1 and B2, B3 and B4 to the box.



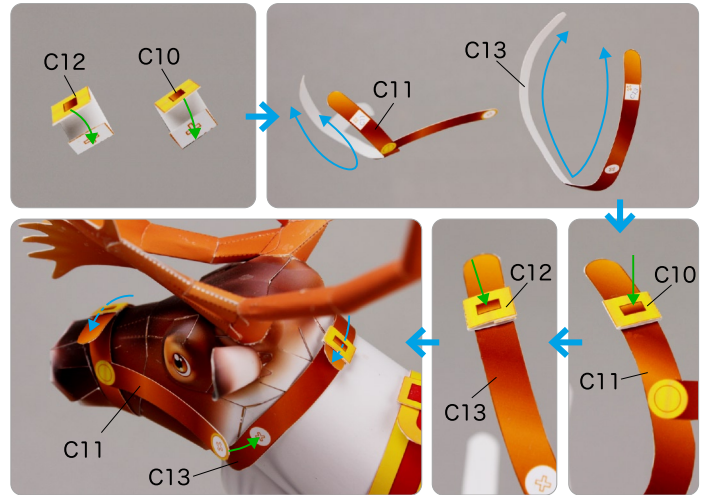
② Assemble B5, B6, and B7, and attach them together. Then attach B8, B9, and B10 together in the same way.



③ Attach the runners to the box to complete the runners.



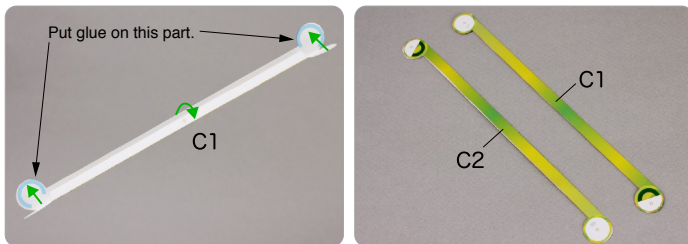
③ Assemble from C10 to C13. Attach the belt to the reindeer.



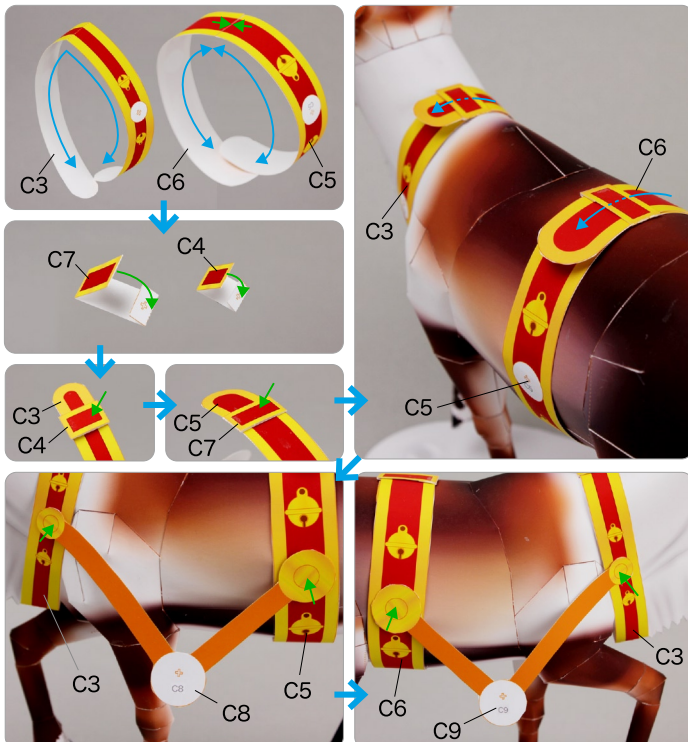
C Make the belt

Use pattern: Page12 / Page13.

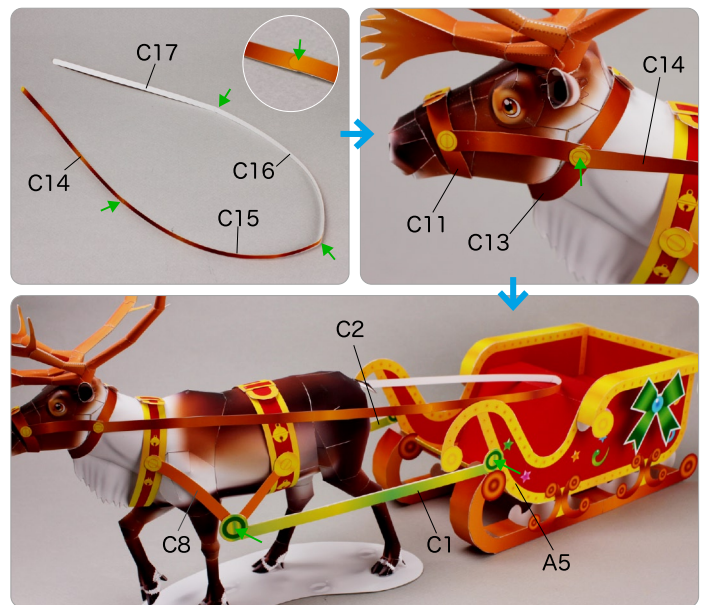
① Assemble C1 and C2.



② Attach from parts C3 to C7 to the reindeer and glue C8 and C9 together.



④ Glue from C14 to C17 together, and glue them to C11. Then glue C1 and C2 to the box and belt.



⑤ Place Santa Claus and the presents on the box to complete the Christmas sleigh.

