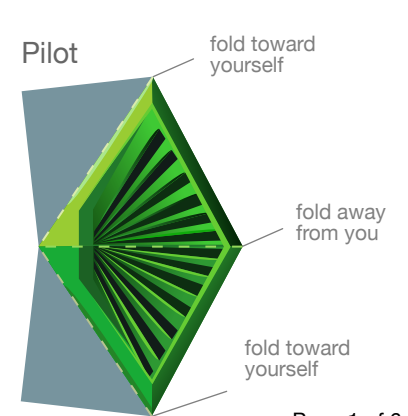
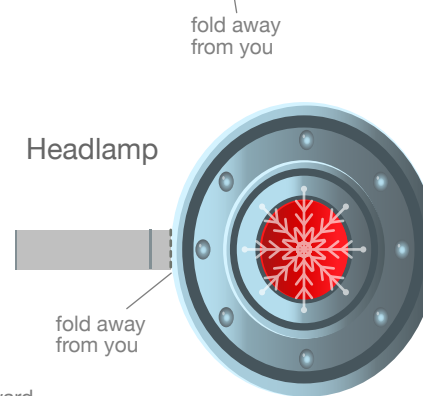
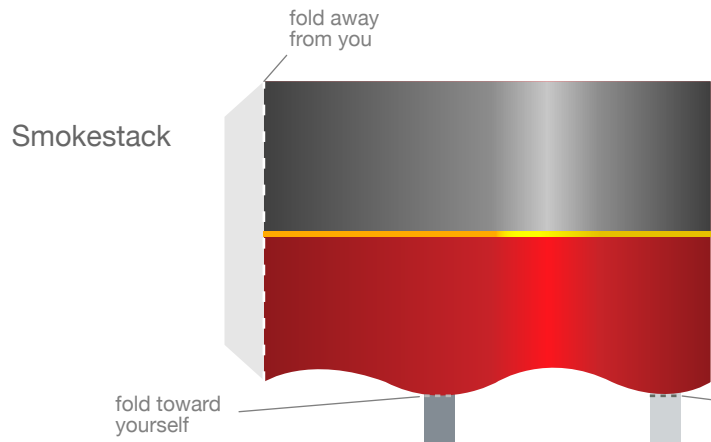
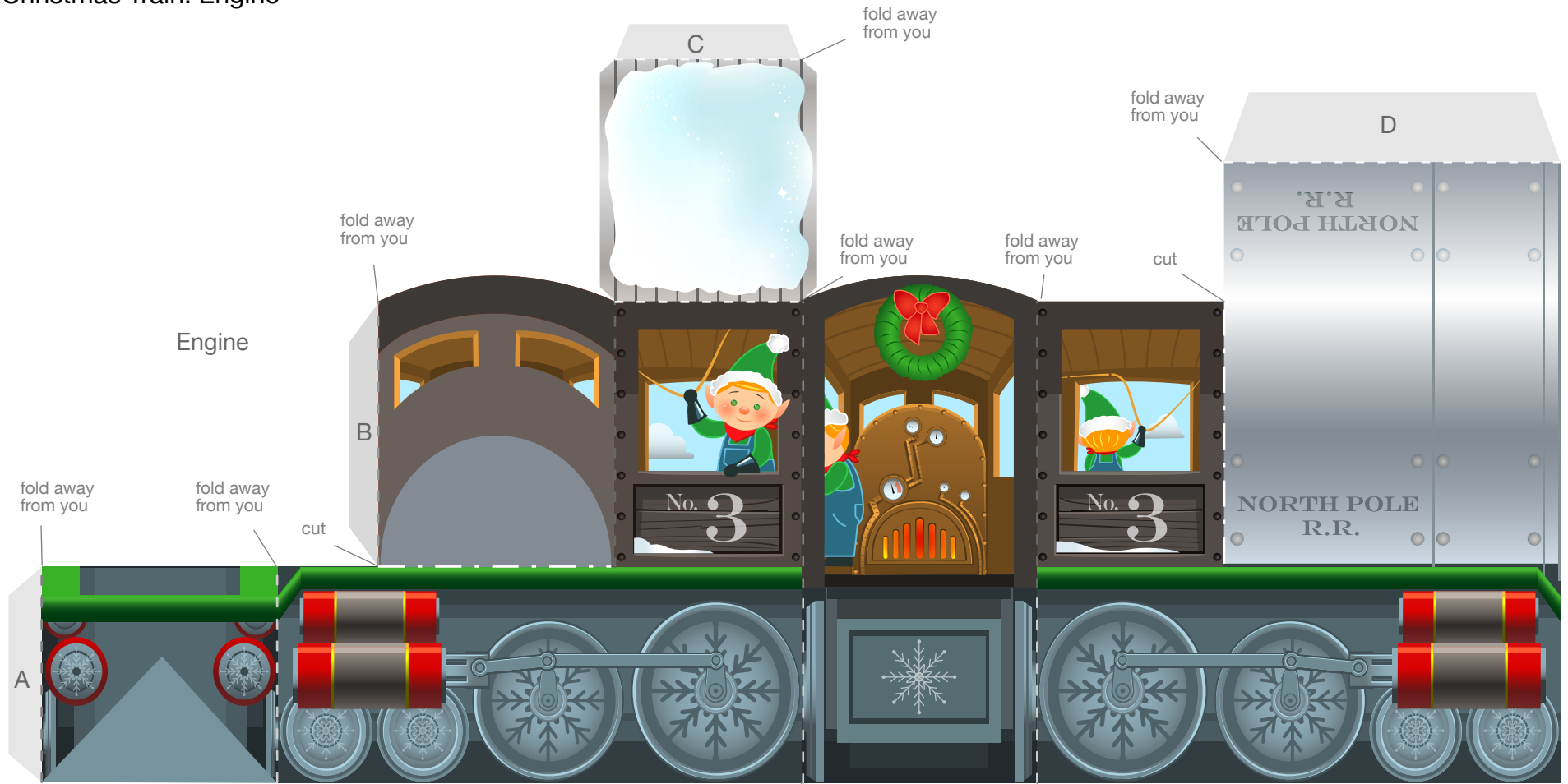
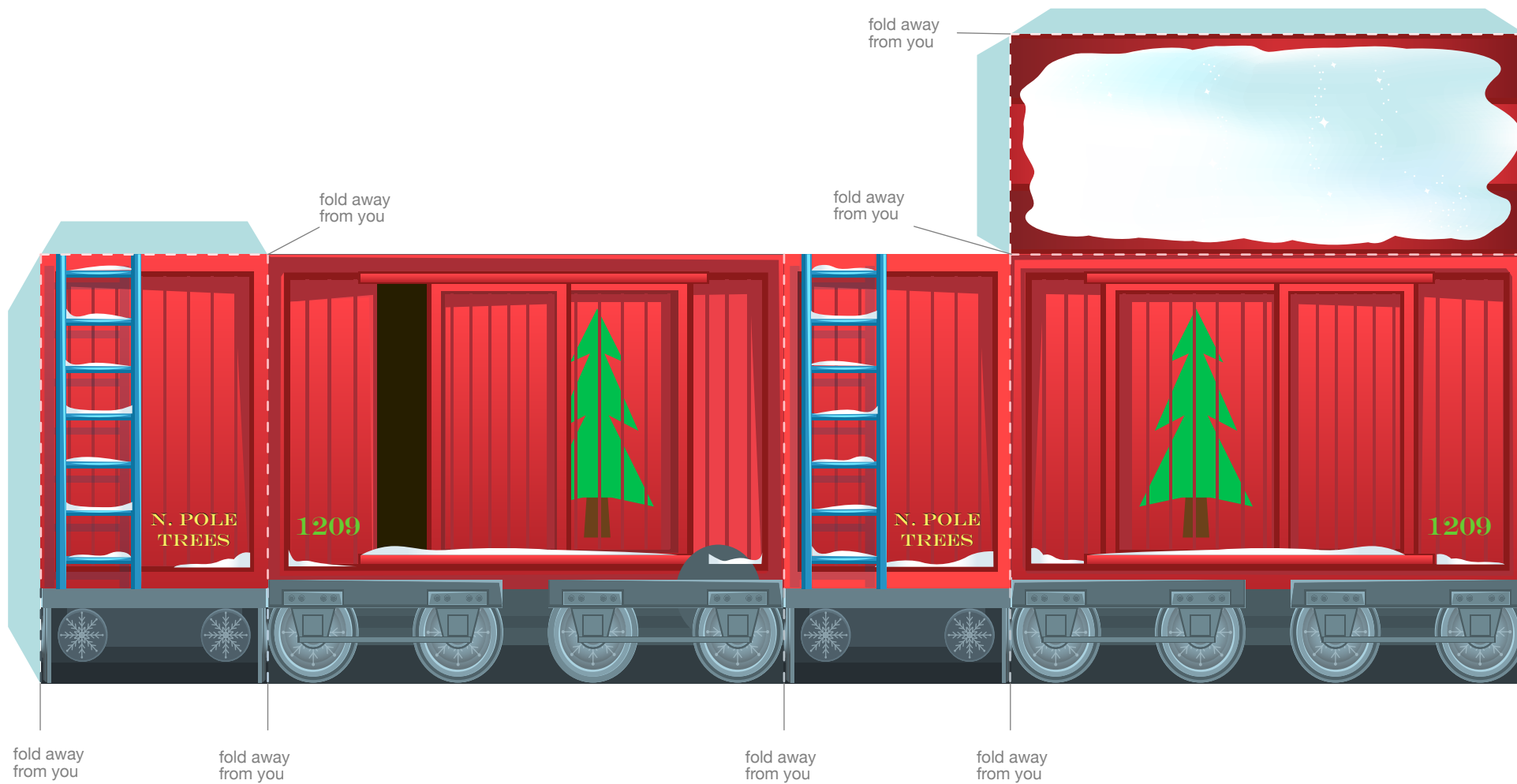


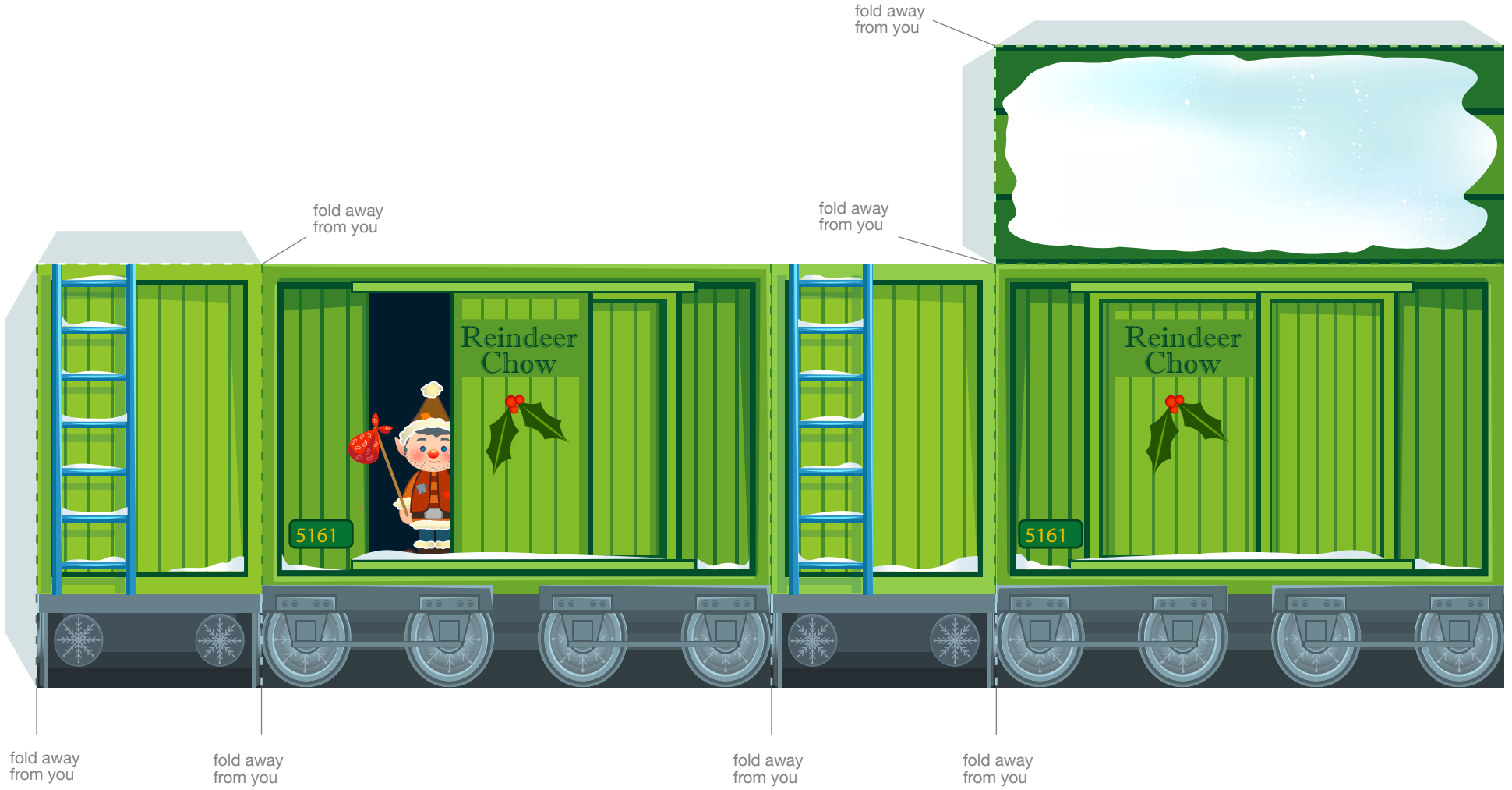
Christmas Train: Engine



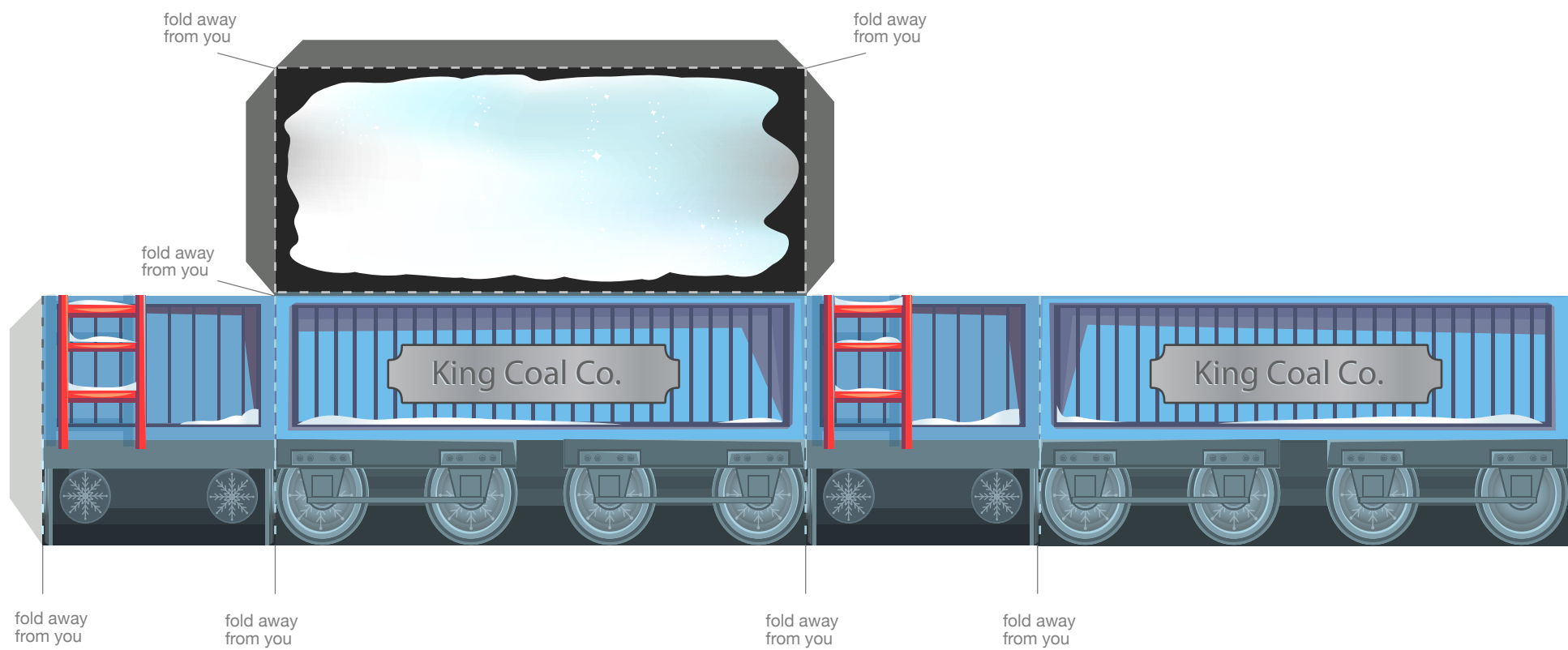
Christmas Train: Christmas Tree Cargo Car



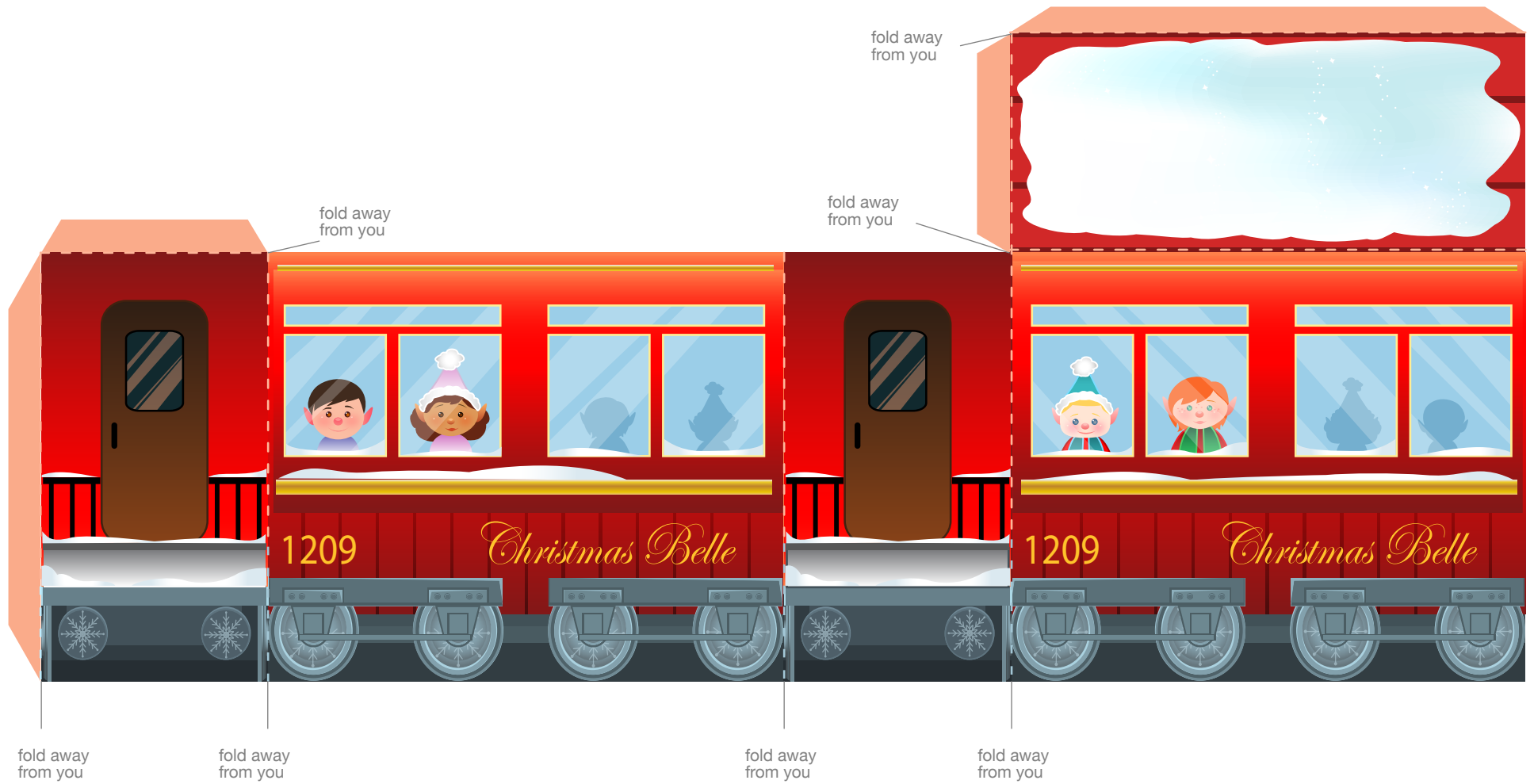
Christmas Train: Reindeer Chow Cargo Car



Christmas Train: King Coal Freight Car



Christmas Train: Christmas Belle Passenger Car



Christmas Train: Instructions

Engine

Cut out the Engine. Make the two indicated cuts, stopping at the red dots. Then make all of the indicated folds (six) away from you. Next, fold over the four gray tabs. Starting with the bottom of the Engine, glue tabs A and B to the sides of the train. Glue tab C on the roof of the cab to the other side of the cab. Glue tab B to the side of the cab. Bend tab D to form a partial cylinder and glue it to the left side of the train. Next, glue tab D.

Place glue underneath the long gray tab on the Headlamp piece and attach it to the front of the train (see photo of finished train). Put glue on the gray tab on the Smoke Stack and form it into a cylinder. Put glue underneath the two smaller gray tabs and attach the smokestack to the top of the Engine.

Fold the Pilot piece in half away from you, then fold the gray tabs away from you. Put glue on the gray tabs and attach to the front of the train (see photo of finished train). Your train Engine is now complete. Tip: Once you have completed all of the train cars, you can tape, glue, or string them all together!

Christmas Tree Cargo Car Instructions

Cut out the Christmas Tree Cargo Car. Using the dotted lines as a guide, make all of the indicated folds (four) away from you. Next, fold the four gray tabs away from you. Starting with the roof of the Christmas Tree Cargo Car, glue the gray tabs to the sides of the train car. Your car will begin to take a rectangular 3-D shape.

Reindeer Chow Cargo Car Instructions

Cut out the Reindeer Chow Cargo Car. Using the dotted lines as a guide, make all of the indicated folds (four) away from you. Next fold the four gray tabs away from you. Starting with the roof of the Reindeer Chow Cargo car, glue the gray tabs to the sides of the train car. Your car will begin to take a rectangular 3-D shape.

King Coal Freight Car Instructions

Cut out the King Coal Freight Car. Using the dotted lines as a guide, make all of the indicated folds (three) away from you. Next, fold the four gray tabs away from you. Glue the gray tabs to the sides of the train car, and your car will to take a rectangular 3-D shape.

Christmas Belle Passenger Car

Cut out the Christmas Belle Passenger Car. Using the dotted lines as a guide, make all of the indicated folds (four) away from you. Next, fold the four gray tabs away from you. Starting with the roof of the Christmas Belle Passenger Car, glue the gray tabs to the sides of the train car. Your car will begin to take a rectangular 3-D shape.