

Eiffel Tower (Separate Night and Day Models; France): Assembly Instructions



Canon ® is a registered trademark of Canon Inc. © Canon Inc. © PAOPAO. Inc

PAPER CRAFT

<http://www.canon.com/c-park/en/>

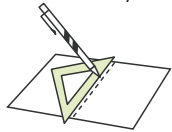


View of completed model

*This model was designed for Papercraft and may differ from the original in some respects.

Assembly Instructions: Four A4 sheets (No.1 to No.4)

*Build the model by carefully reading the Assembly Instructions, in the parts sheet page order.



*Hint: Trace along the folds with a ruler and an exhausted pen (no ink) to get a sharper, easier fold.

Assembly Instructions



Mountain fold(dotted line)
Make a mountain fold.



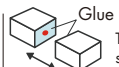
Valley fold(dashed and dotted line)
Make a valley fold.



Scissors line(solid line)
Cut along the line.



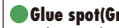
Cut in line(solid line)
Cut along the line.



Glue
The glue spot(colored dot) shows where to apply the glue.



Glue spot(Red dot)
Glue parts with the same number together.



Glue spot(Green dot)
Glue within the same part.



Glue spot(Blue dot)
Glue to the rear of the other part.

Tools and materials



Scissors, set square, glue(We recommend stick glue), pencil, used ballpoint pen, toothpicks, tweezers, (useful for handling small parts)

Assembly tip



Before gluing, crease the paper along mountain fold and valley fold lines and make sure rounded sections are nice and stiff.

Caution



Glue, scissors and other tools may be dangerous to young children so be sure to keep them out of the reach of young children.

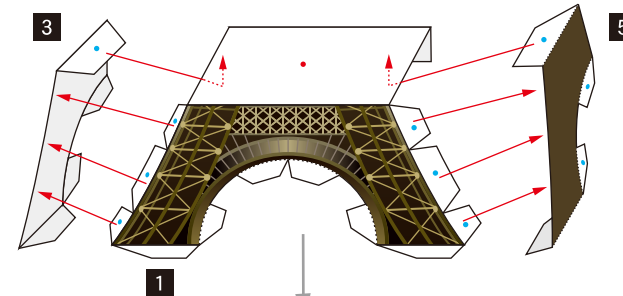
Before starting assembly:Writing the number of each section on its back side before cutting out the sections is highly recommended.
(* This way, you can be sure which section is which even after cutting out the sections.)



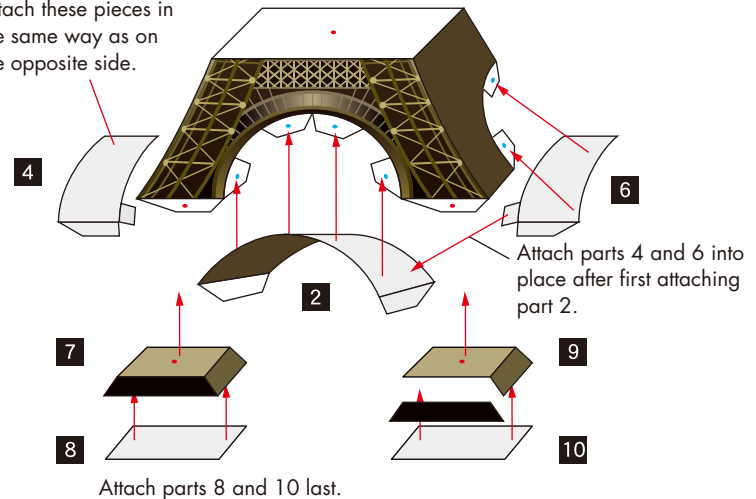
Indicates where sections should be glued together.

* In addition to the separate day and night models, you can build an Eiffel Tower model with combined day and night backgrounds.

[1] Assemble the tower structure (the base below the pillars).
Attach the rear surface parts after first attaching the side surface parts into place.



Attach these pieces in the same way as on the opposite side.



Build the other structure in identical fashion.

* Assemble the night parts in the same way.
Night part numbers are the same as for the day parts.

Eiffel Tower (Separate Night and Day Models; France): Assembly Instructions



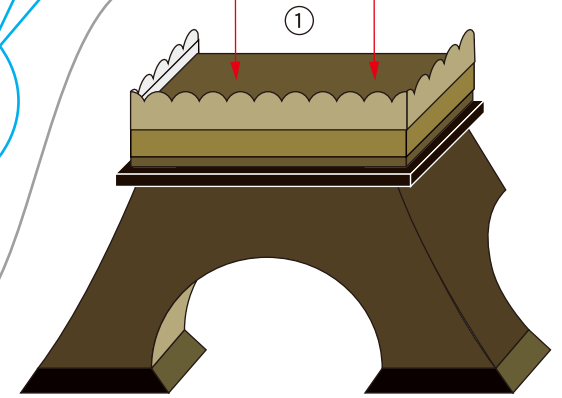
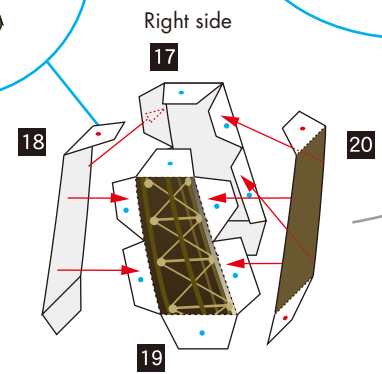
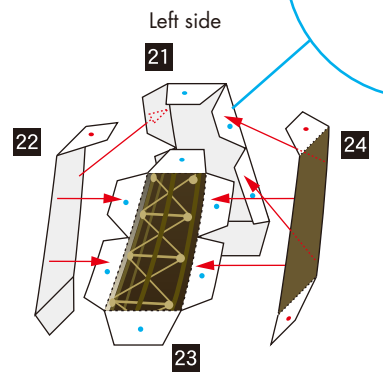
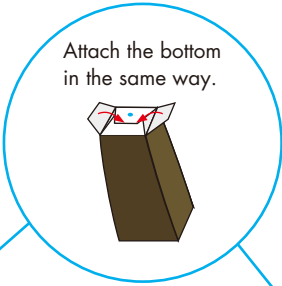
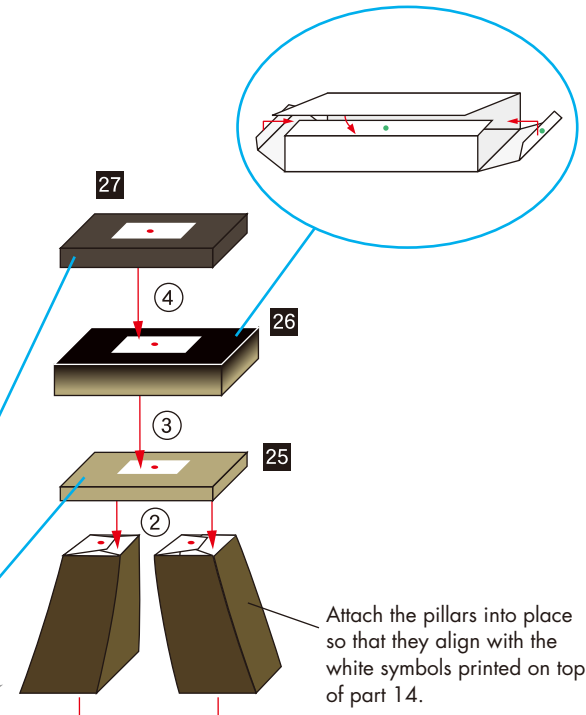
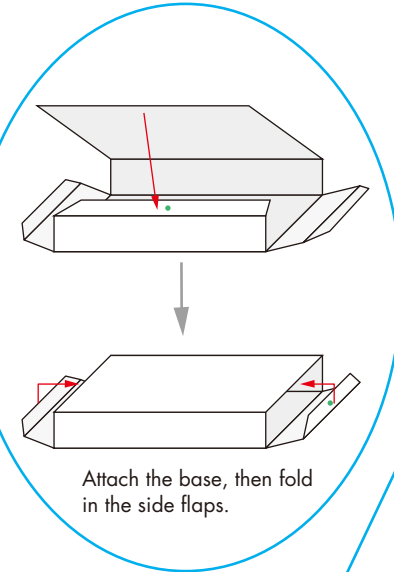
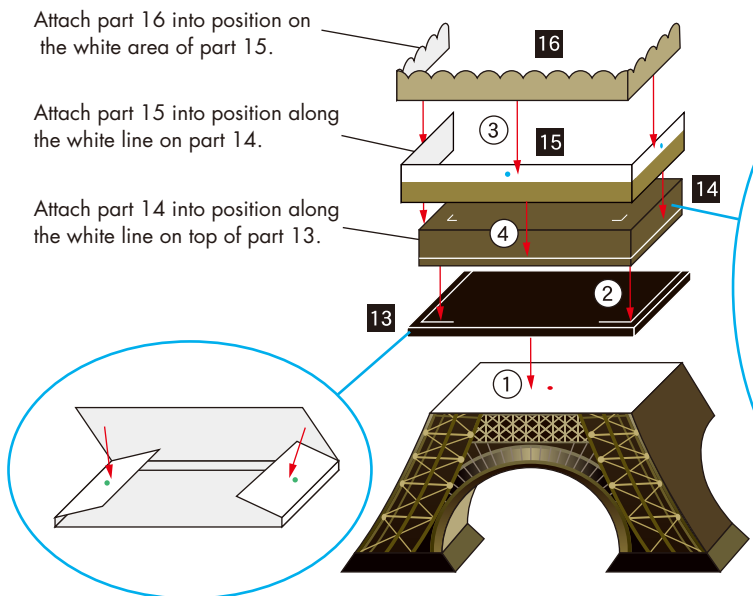
Canon ® is a registered trademark of Canon Inc. © Canon Inc. © PAOPAO, Inc

[2] Assemble the structure by putting the parts together in numbered order, aligning the printed symbols appearing on the parts.
 * Assemble these parts so that the structure is flush with the background.

Attach part 16 into position on the white area of part 15.

Attach part 15 into position along the white line on part 14.

Attach part 14 into position along the white line on top of part 13.



Build the other structure in identical fashion.

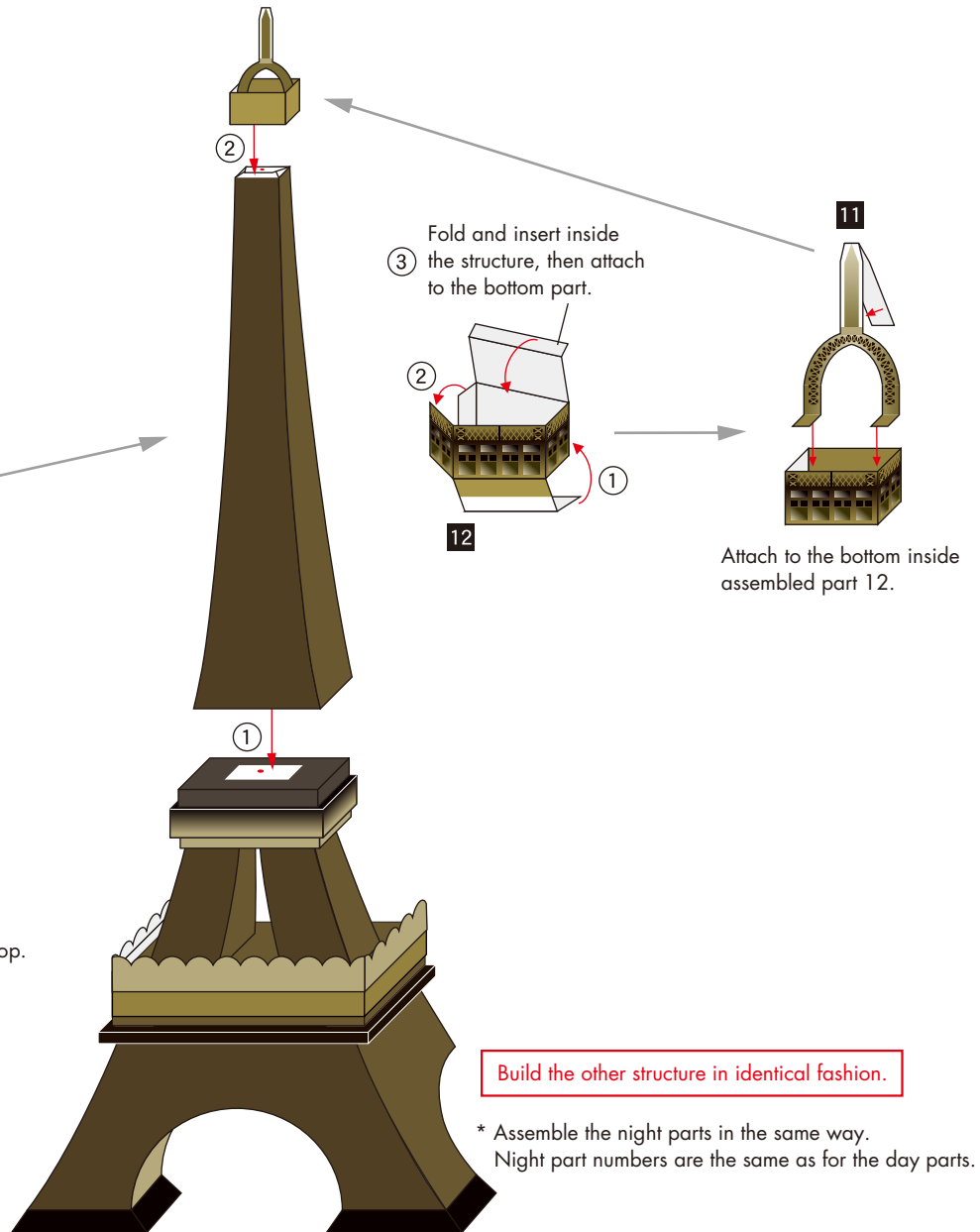
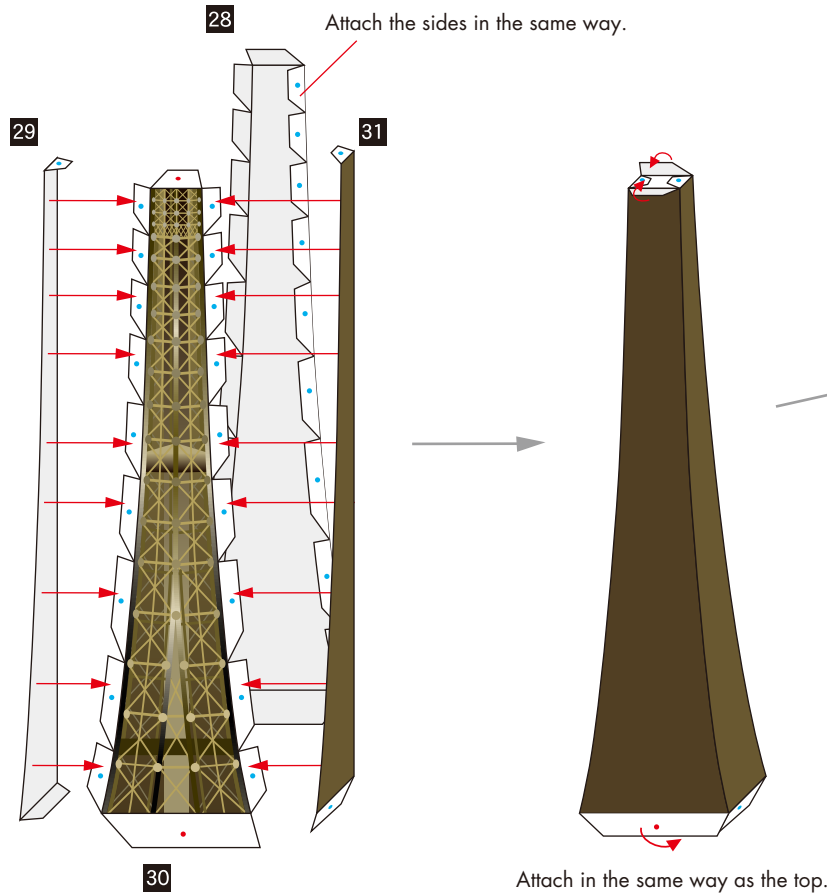
* Assemble the night parts in the same way.
 Night part numbers are the same as for the day parts.

Eiffel Tower (Separate Night and Day Models; France): Assembly Instructions



Canon ® is a registered trademark of Canon Inc. © Canon Inc. © PAOPAO, Inc

[3] Assemble the structure.
* Assemble these parts so that the structure is flush with the background.

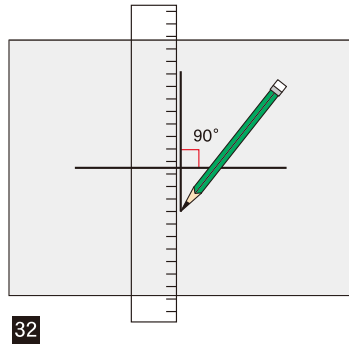


Eiffel Tower (Separate Night and Day Models; France): Assembly Instructions



Canon ® is a registered trademark of Canon Inc. © Canon Inc. © PAOPAO, Inc

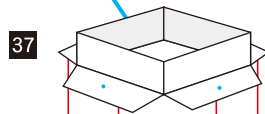
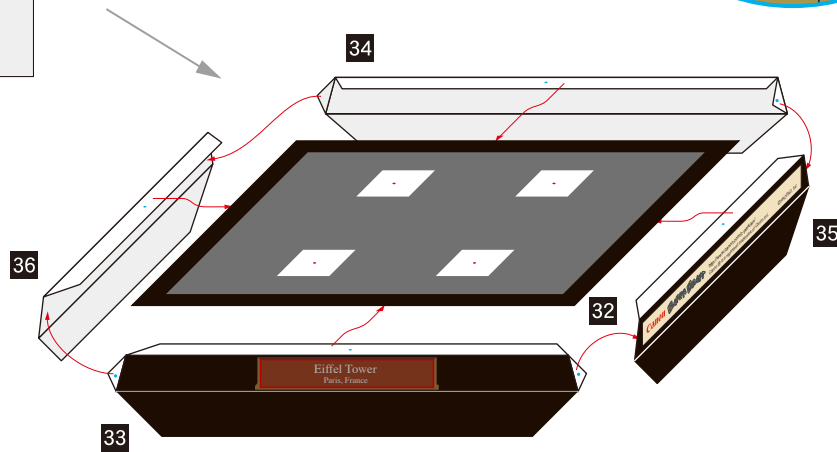
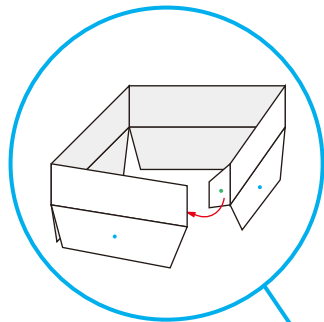
[4] Assemble the base.



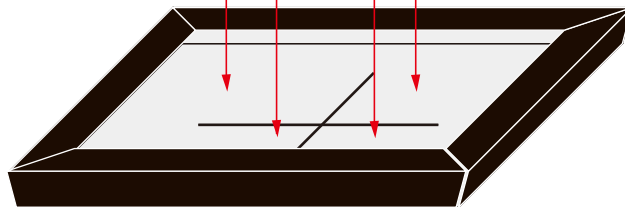
Before attaching the parts, draw lines crossing perpendicularly at the center on the reverse side of part 32.

* Finally, glue the edges of the towers together.

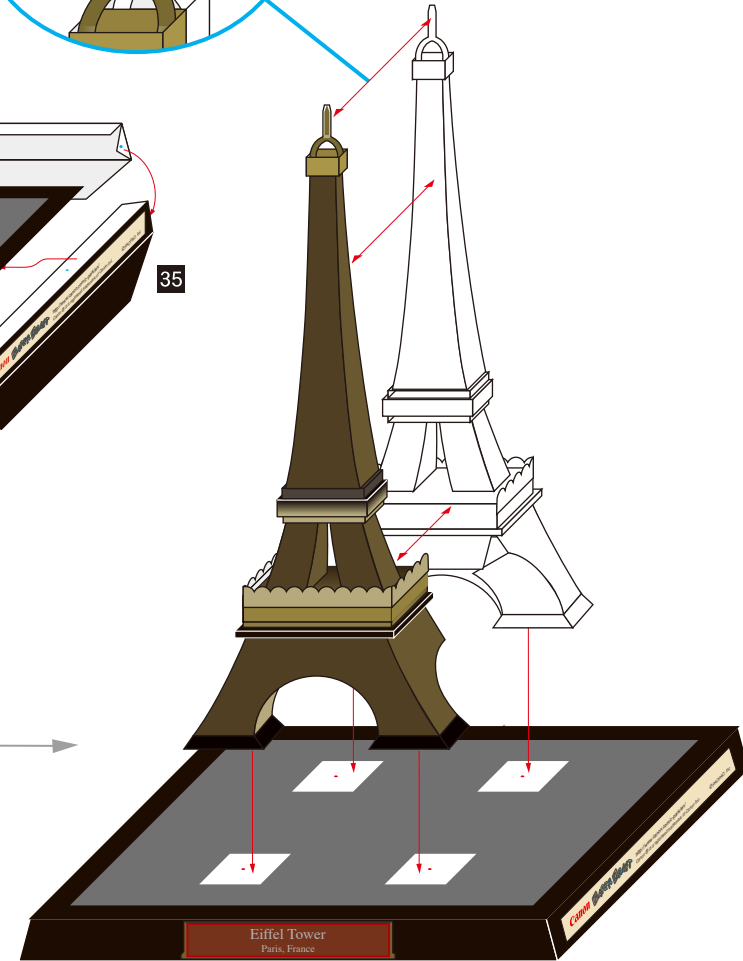
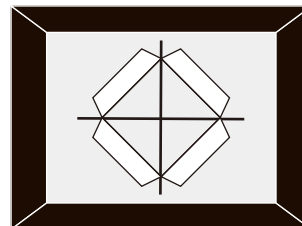
* After assembling the rear sides of the two Eiffel Towers, attach them atop the base.



Turn the base upside down and attach part 37 to align with the lines you drew in the previous step.



View from below



Finished!

* Night part numbers are the same as for the day parts.