



● View of completed model

Japan Byodoin Phoenix Hall

Scale:1/150

Byodoin is a famous Japanese temple, that has been listed as a World Heritage Site. The temple was originally built in the early years of the Heian period (794-1185), as a rural villa called "Uji-dono" for court noble Fujiwara no Michinaga. After his death, Michinaga's son Fujiwara no Norimichi inherited the villa, and in the seventh year of the Eisho period (1052) he turned the villa into a Buddhist temple which was then named "Byodoin." In the following year, the Amida Hall was constructed to provide a place of eternal rest for Amida, the Buddha of Infinite Light and Life, and this hall still contains architectural works and Buddha statues made around 1000 years ago. The Amida Hall is now more commonly known as the Phoenix Hall, because the whole building resembles a bird with its wings spread, and also because of the phoenixes that adorn the roof of the main building. It is thought that the name Phoenix Hall was applied in the early Edo period (1600-1867). The Phoenix Hall is comprised of four buildings: a main hall, two wing corridors and a tail corridor. It has been designated as a Japanese National Treasure. The Phoenix Hall is also well known around the country as it features on both the 10 yen coin and the 10000 yen note.

* This model was designed for Papercraft and may differ from the original in some respects.

■ Parts sheet (Pattern) :Twenty-eight A4 sheets (No.1 ~ No.28)

■ No.of Parts :345

* Build the model by carefully reading the Assembly Instructions,in the parts sheet page order.

* Assembly will be easier if you write the part's number on the back of each part.



● East face



● West face

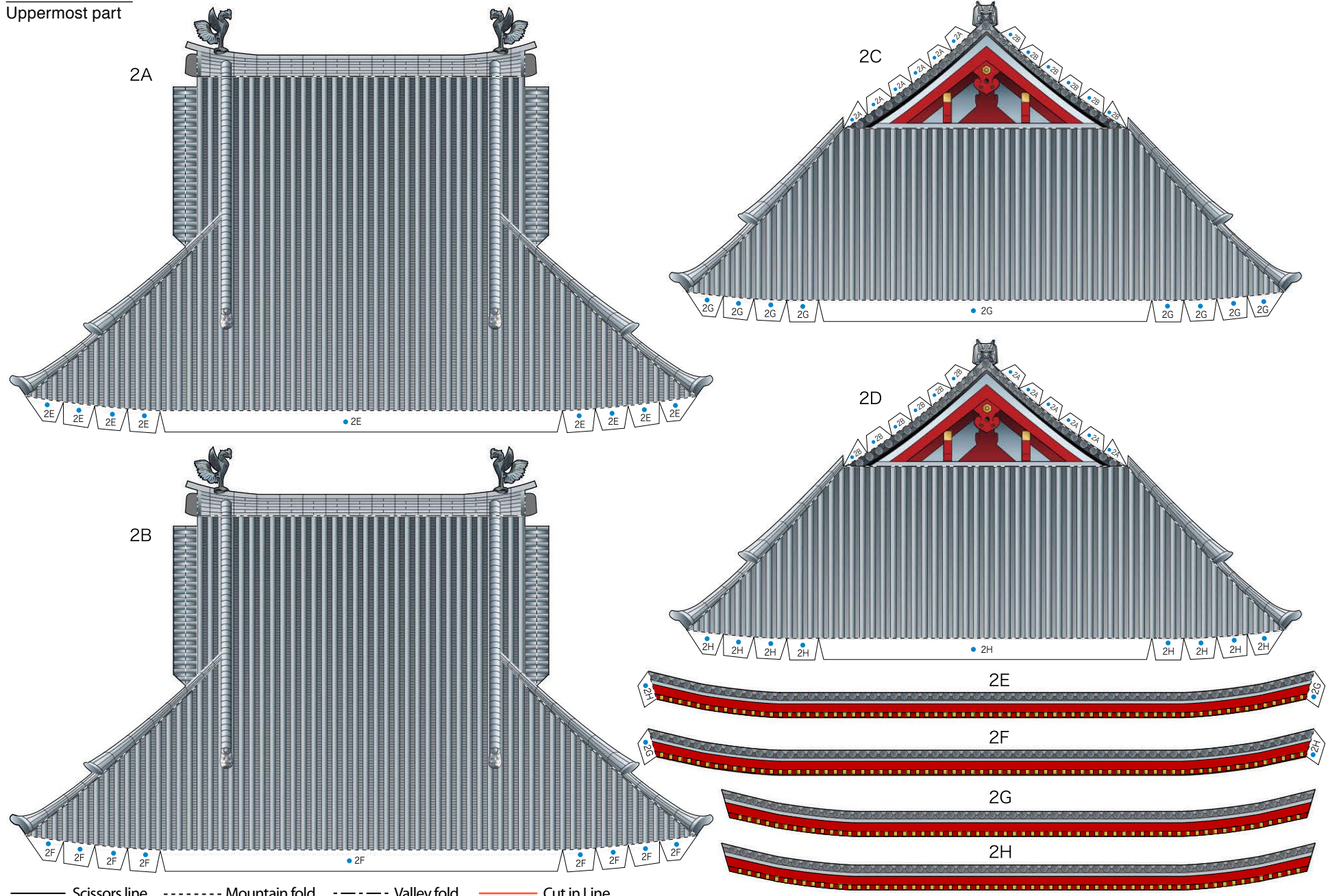


● South face



● North face

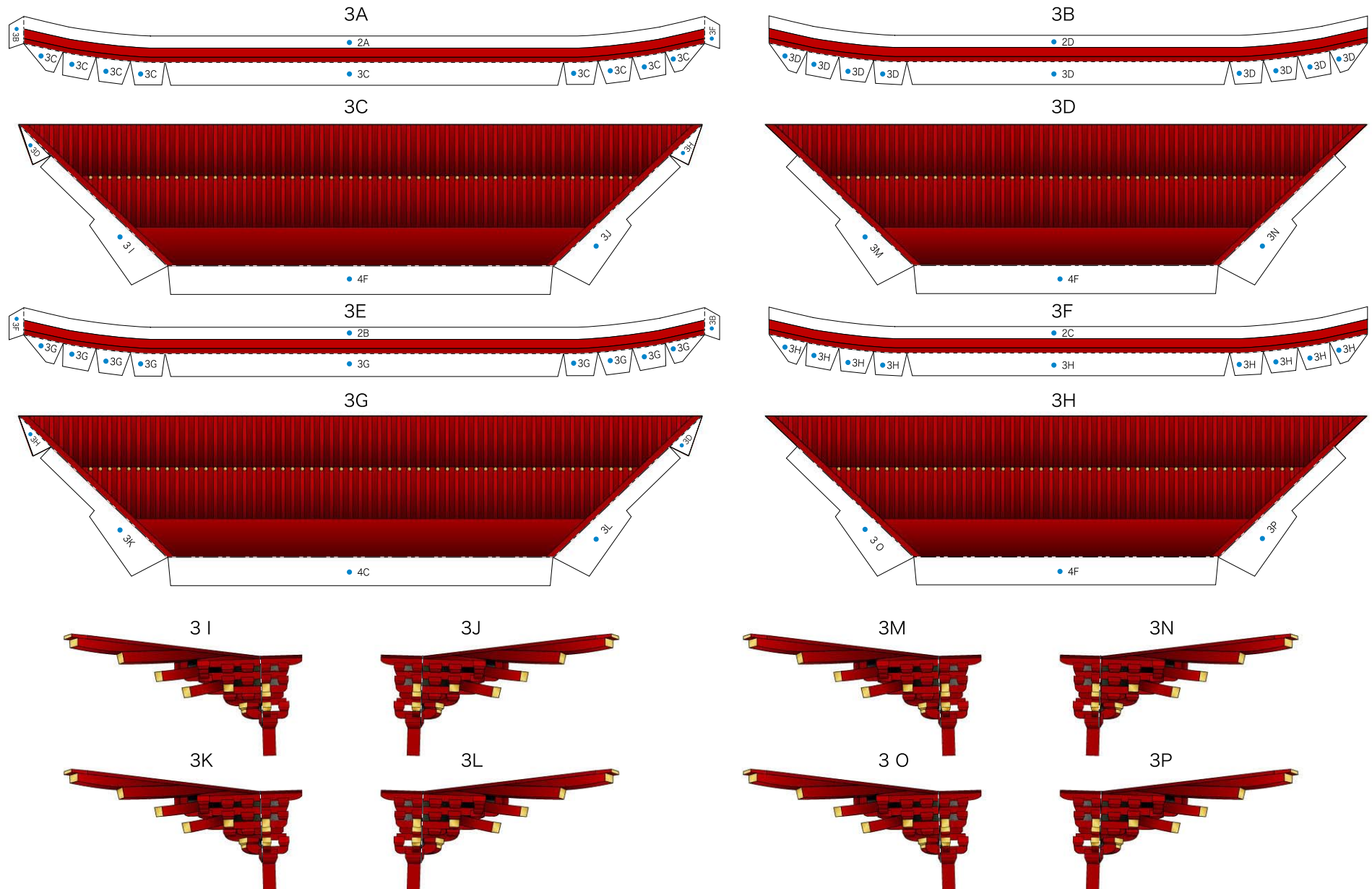
Main hall roof Uppermost part



—— Scissors line - - - - - Mountain fold - - - - - Valley fold ——— Cut in Line

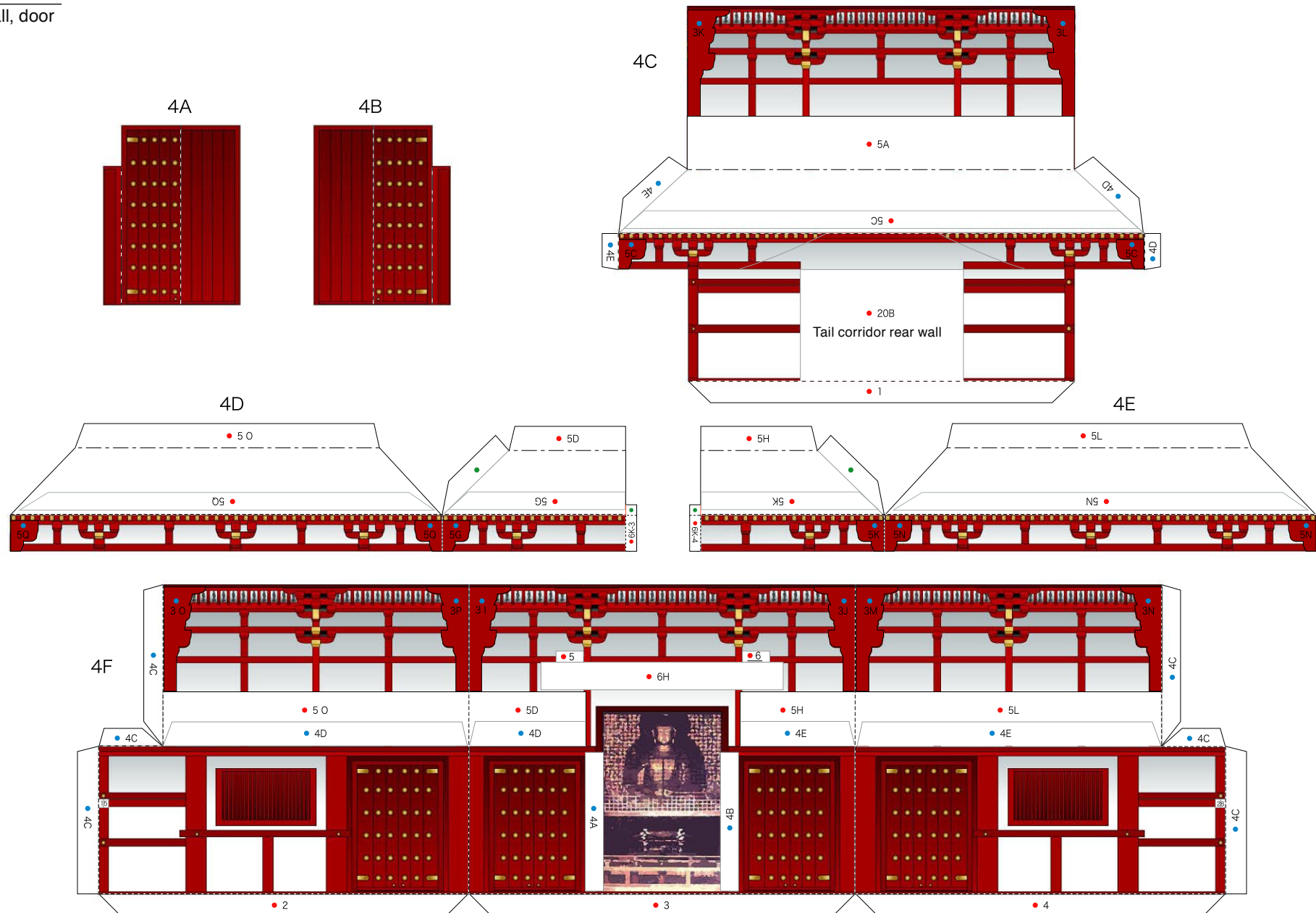
Main hall roof

Uppermost part (bottom)



— Scissors line - - - - - Mountain fold - - - - - Valley fold ——— Cut in Line

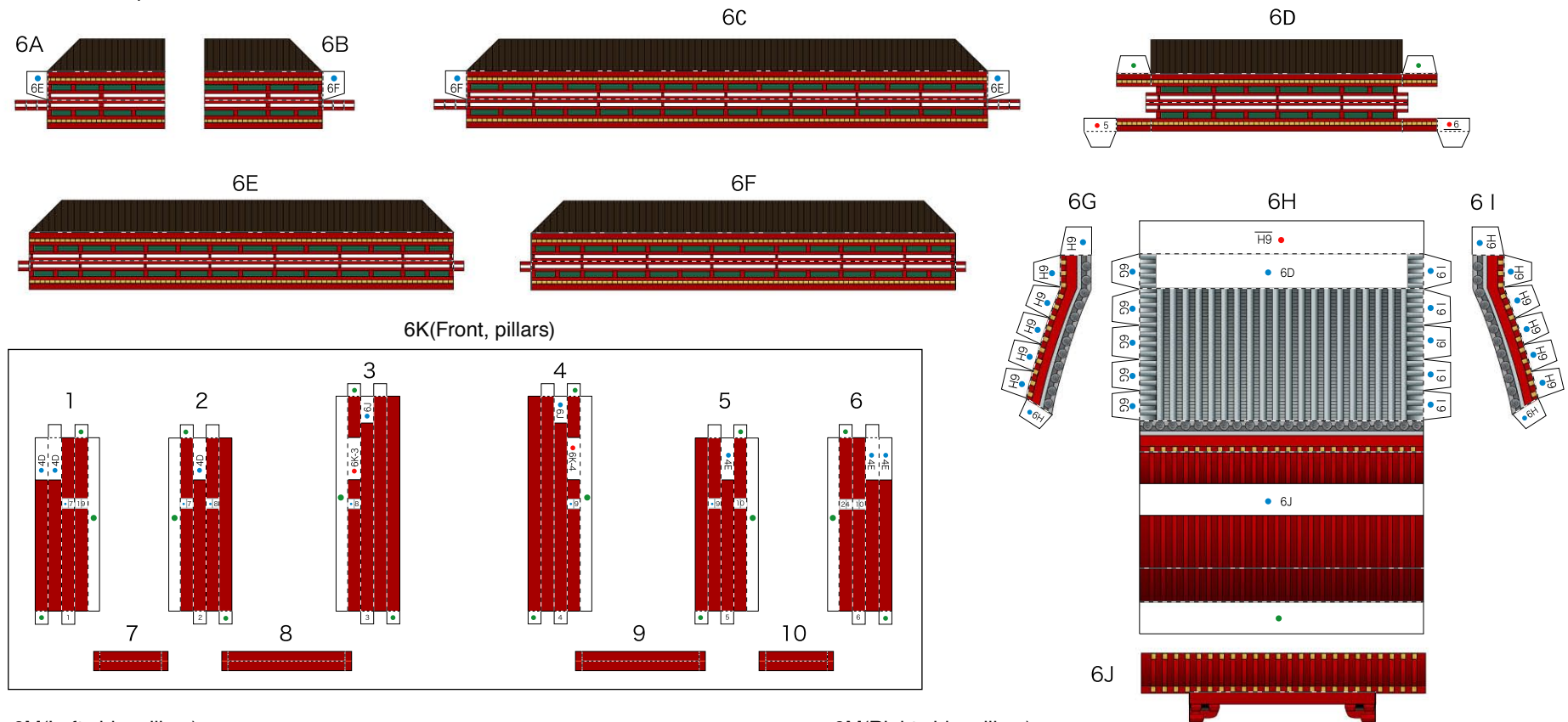
Main hall Wall, door



—— Scissors line - - - - Mountain fold - - - - Valley fold ——— Cut in Line

Phoenix Hall main hall

Ground floor roof, pillars



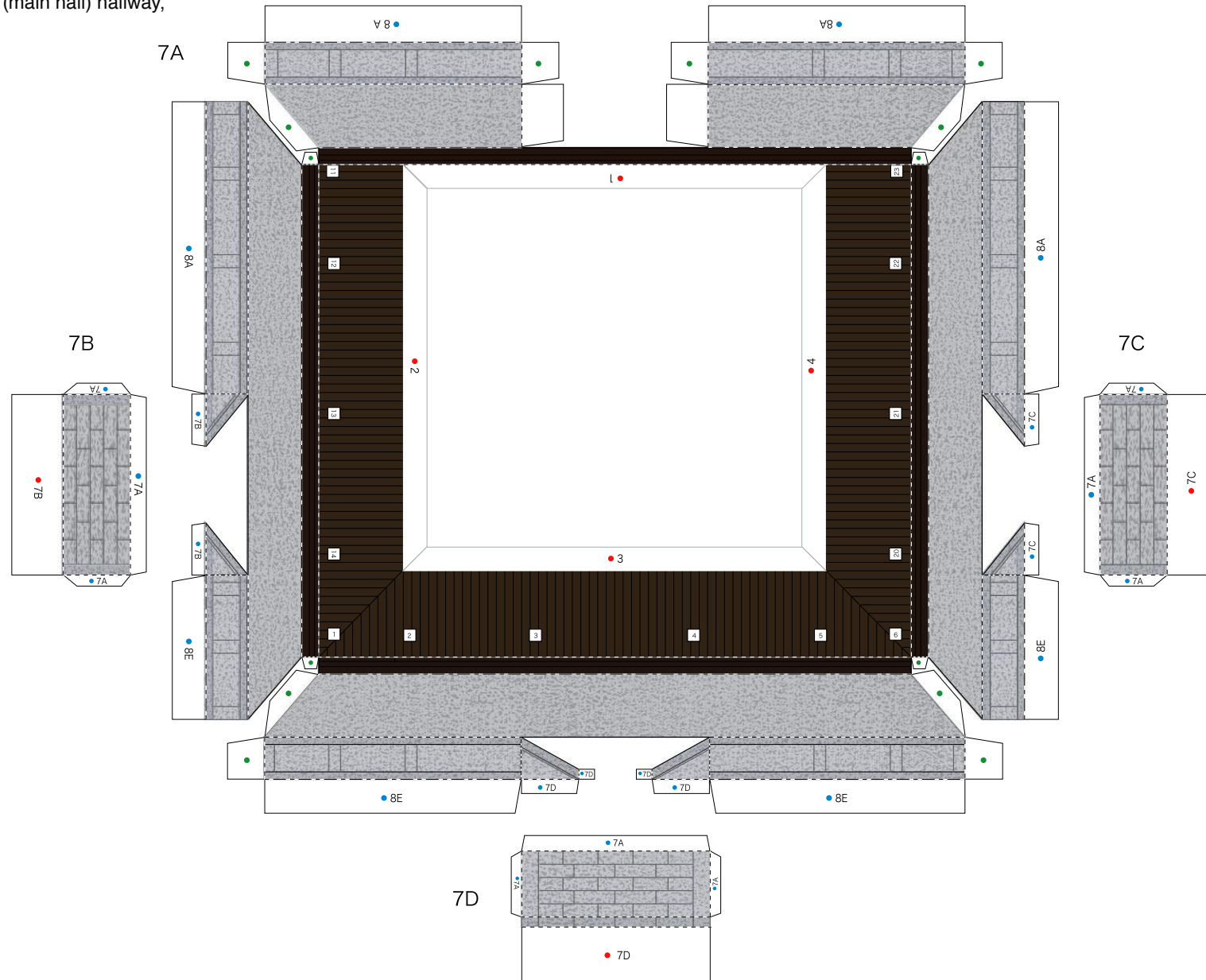
6M(Left side, pillars)

6N(Right side, pillars)

—— Scissors line - - - - - Mountain fold - · - · - Valley fold ——— Cut in Line

Phoenix Hall main hall

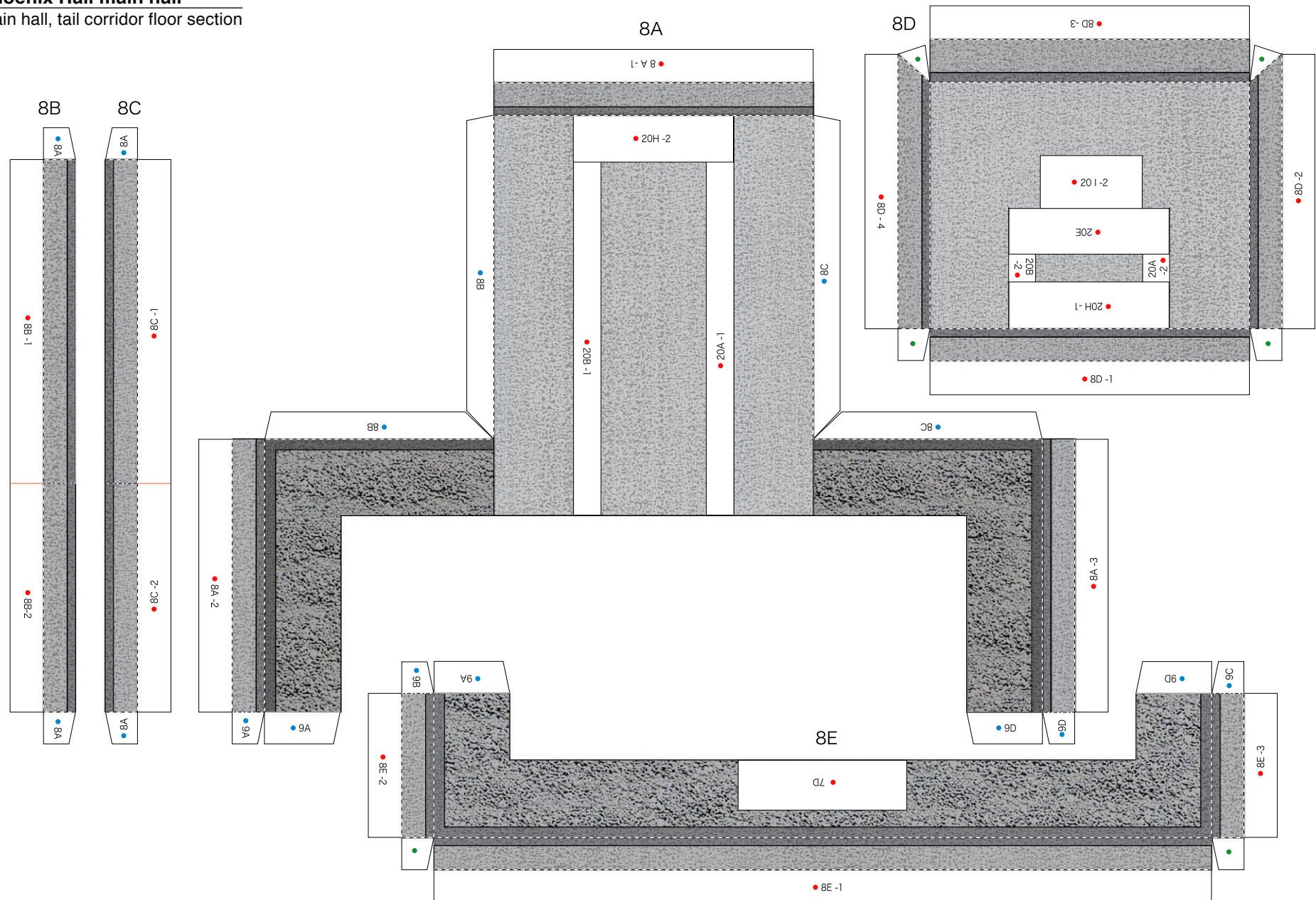
Ground floor (main hall) hallway,
floor, stairs



—— Scissors line - - - - - Mountain fold - - - - - Valley fold - - - - - Cut in Line

Phoenix Hall main hall

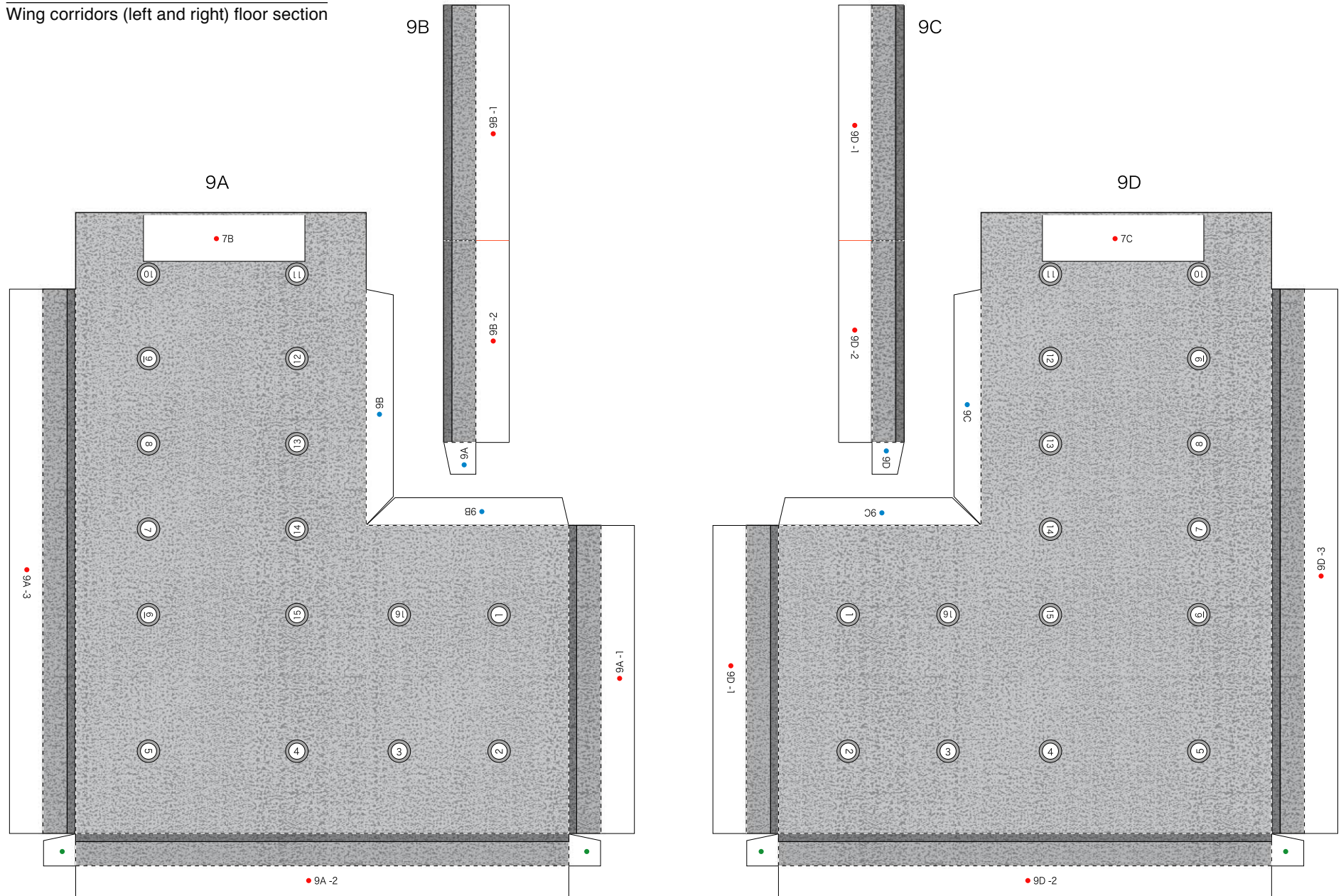
Main hall, tail corridor floor section



—— Scissors line - - - - - Mountain fold - - - - - Valley fold ——— Cut in Line

Phoenix Hall main hall

Wing corridors (left and right) floor section

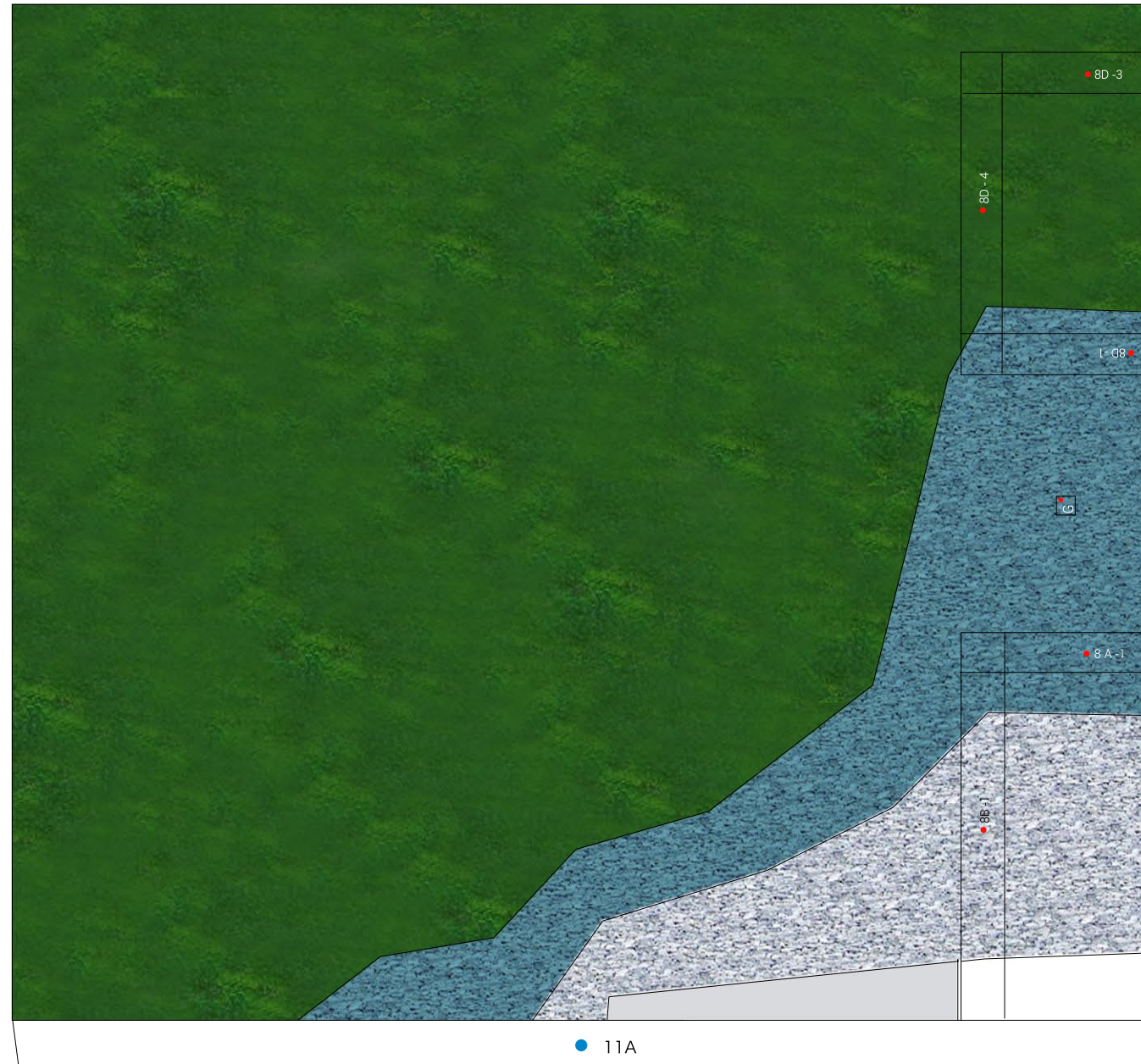


— Scissors line - - - - - Mountain fold Valley fold ——— Cut in Line

Display stand

Display stand surface (upper left)

10A



—— Scissors line - - - - - Mountain fold - - - - - Valley fold ——— Cut in Line

Display stand

Display stand surface (lower left)

11A



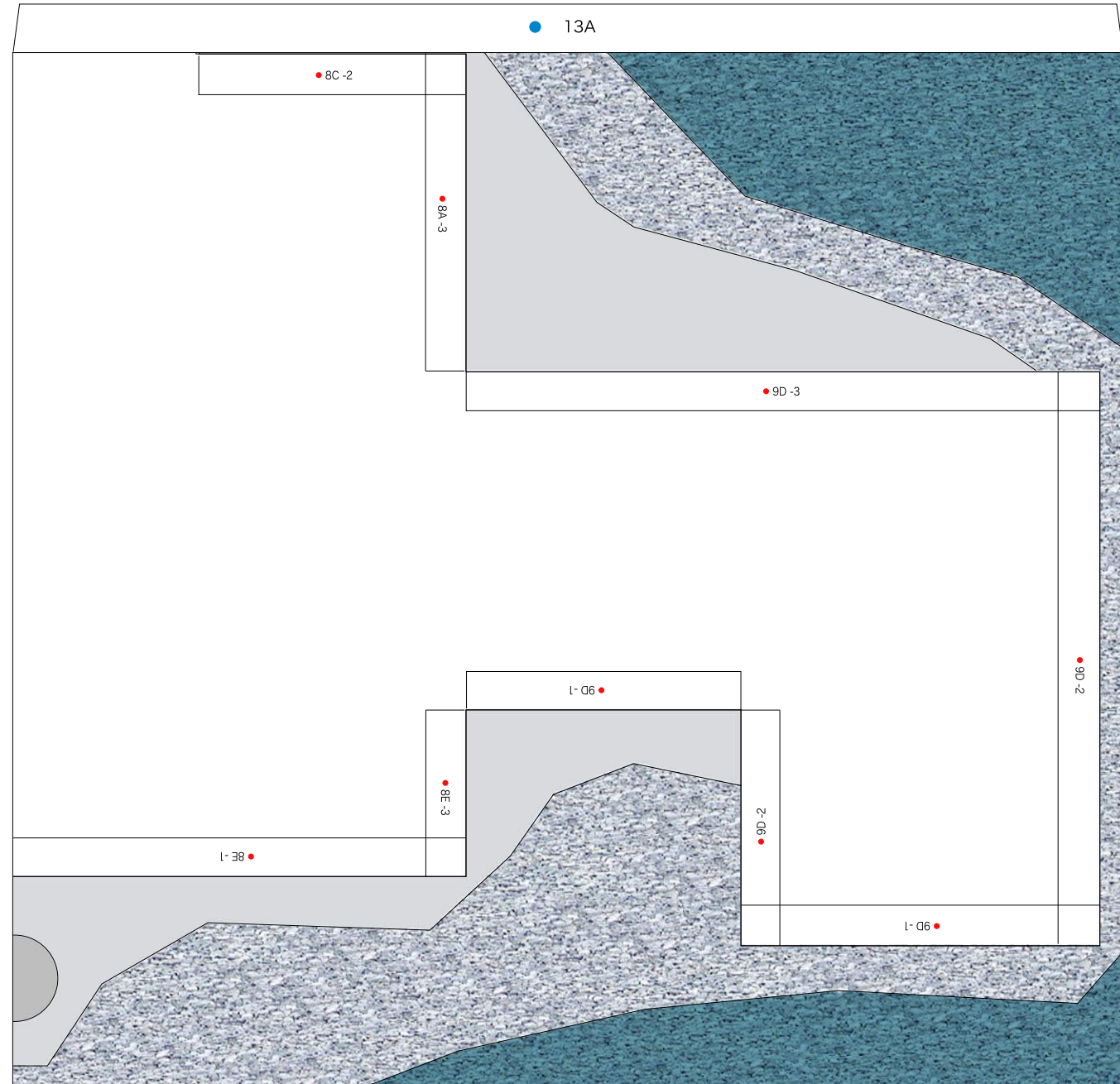
—— Scissors line - - - - - Mountain fold - - - - - Valley fold ——— Cut in Line

Display stand

Display stand surface (lower right)

12A

13A

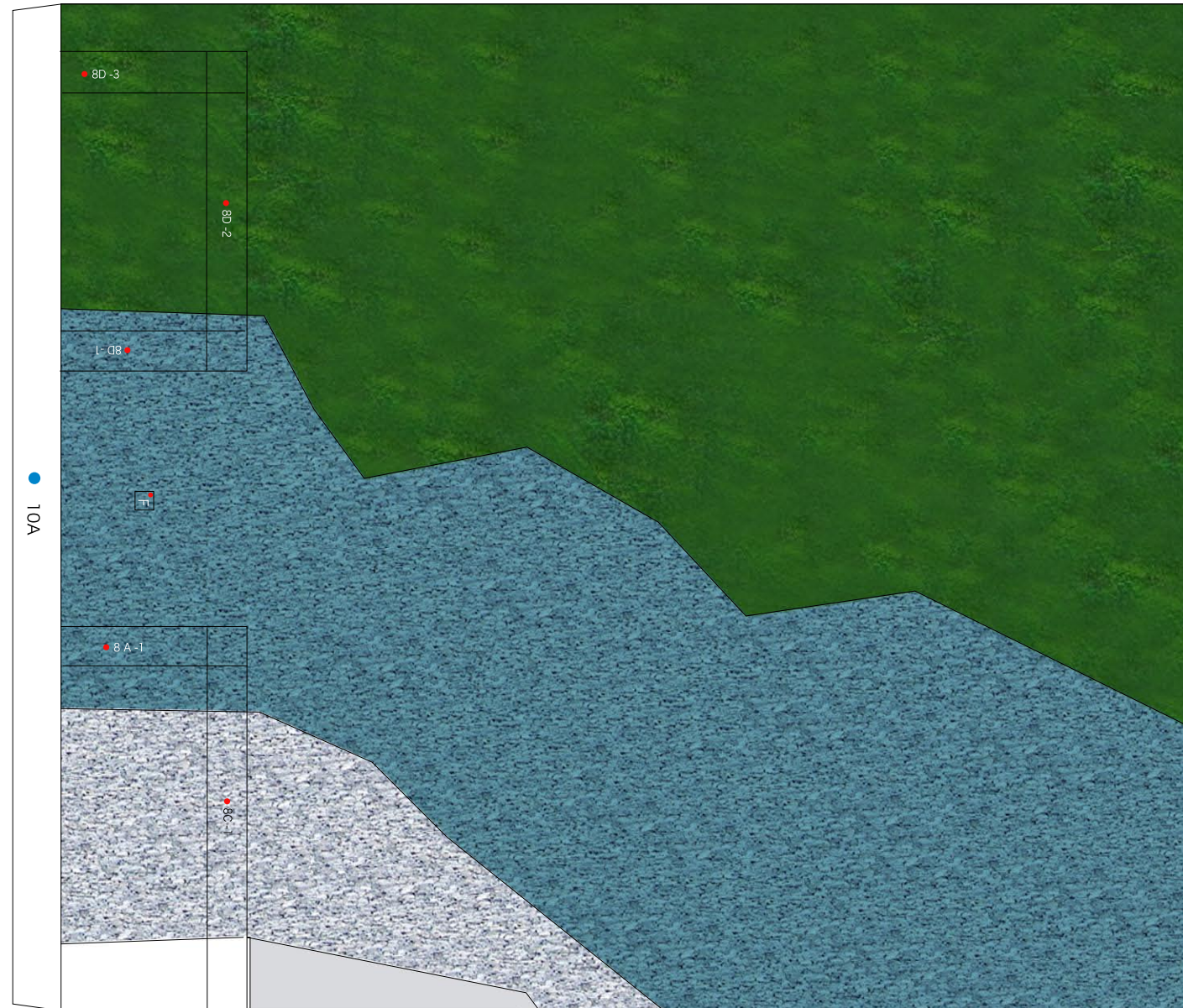


—— Scissors line - - - - - Mountain fold - - - - - Valley fold - - - - - Cut in Line

Display stand

Display stand surface (upper right)

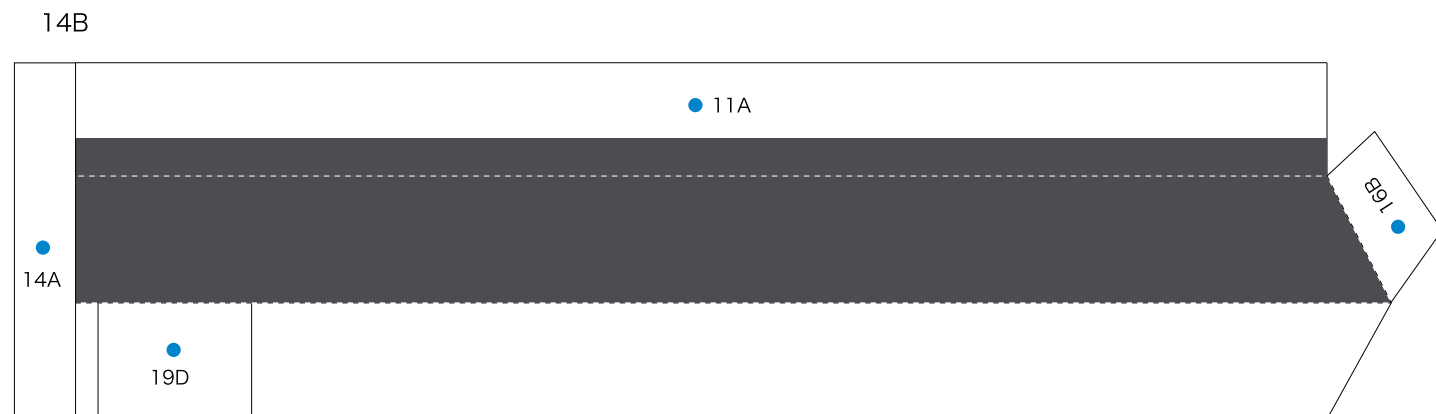
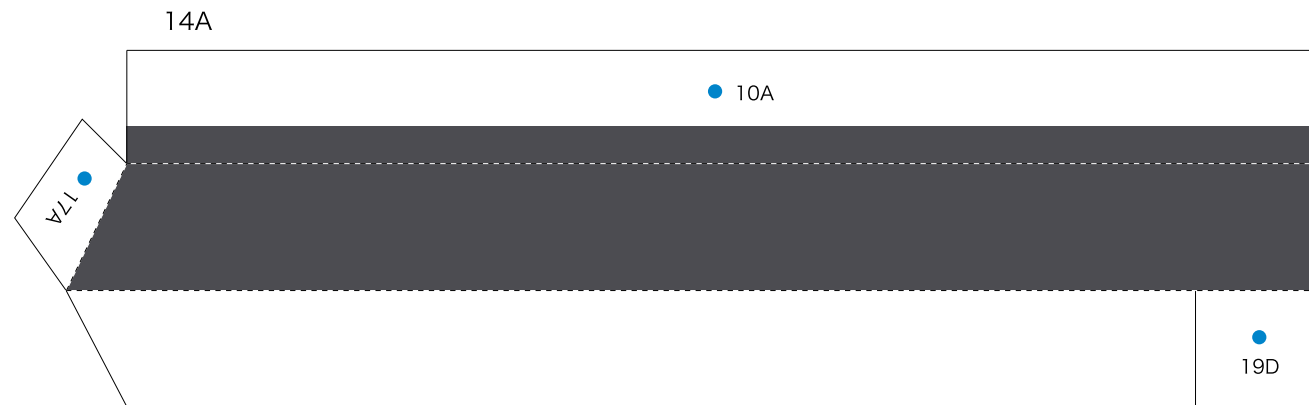
13A



—— Scissors line - - - - - Mountain fold - . - . - Valley fold ——— Cut in Line

Display stand

Side (left)



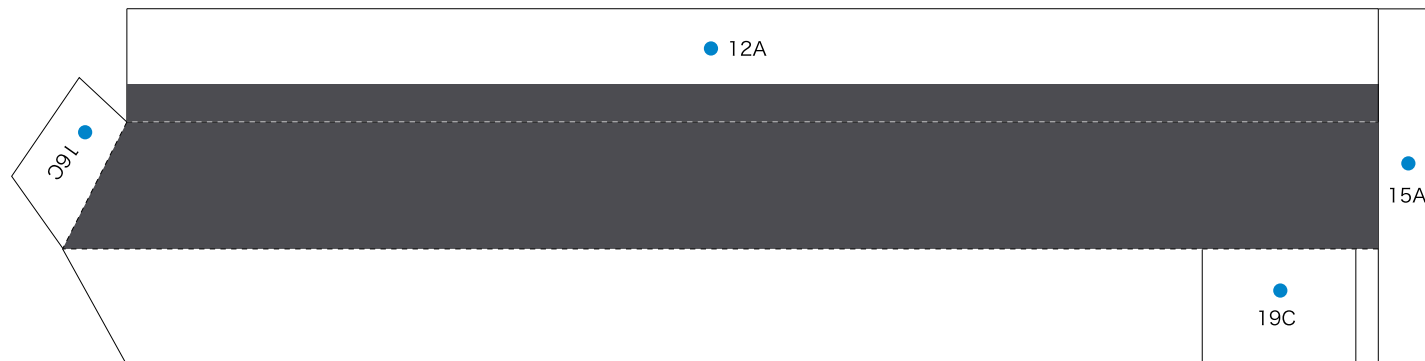
Display stand

Side (right)

15A



15B



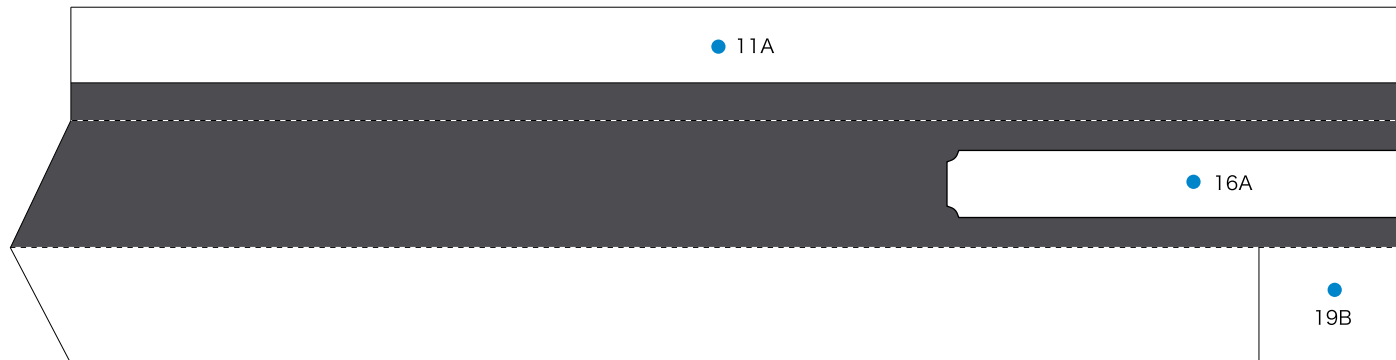
Display stand

Side (front parts)

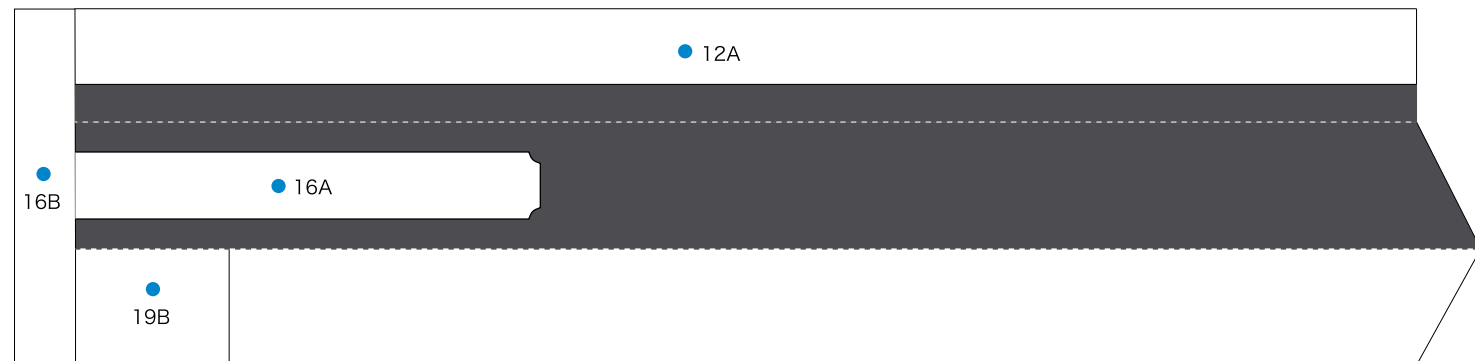
16A



16B



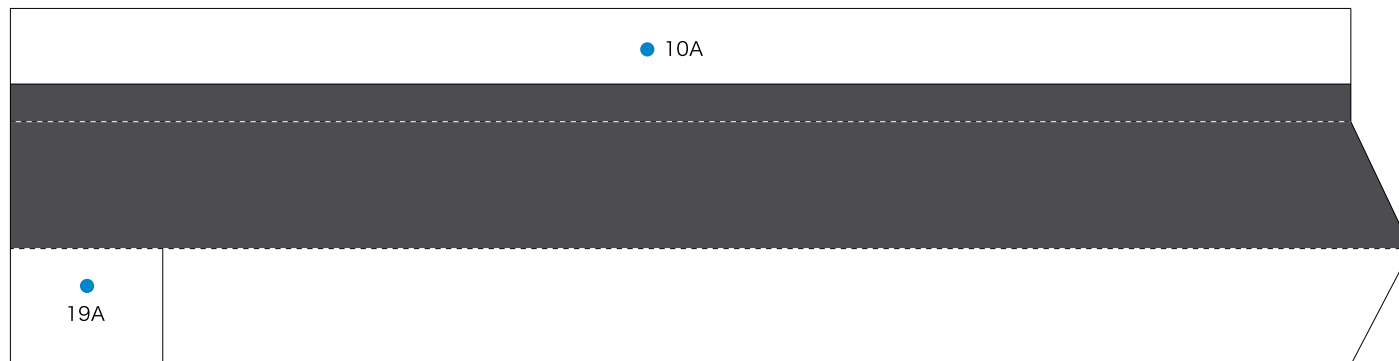
16C



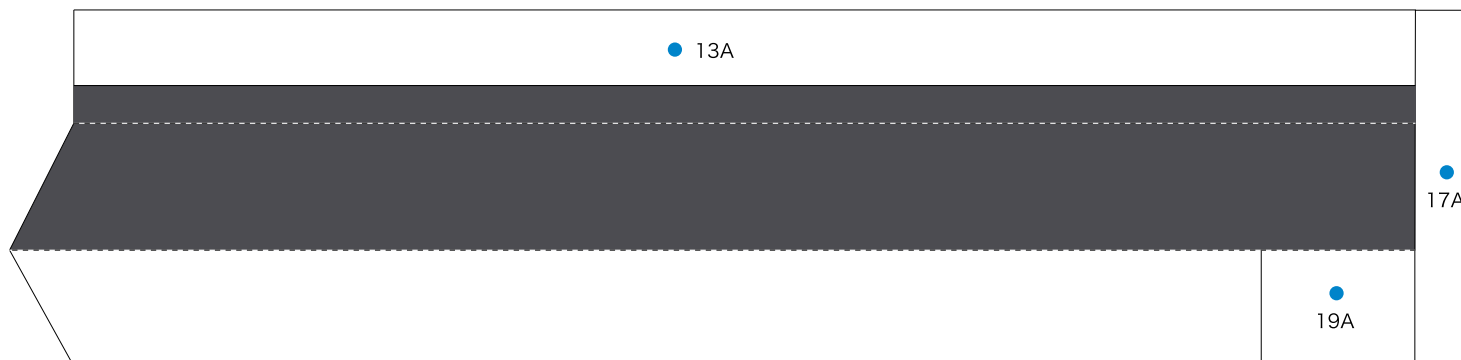
Display stand

Side (rear parts)

17A

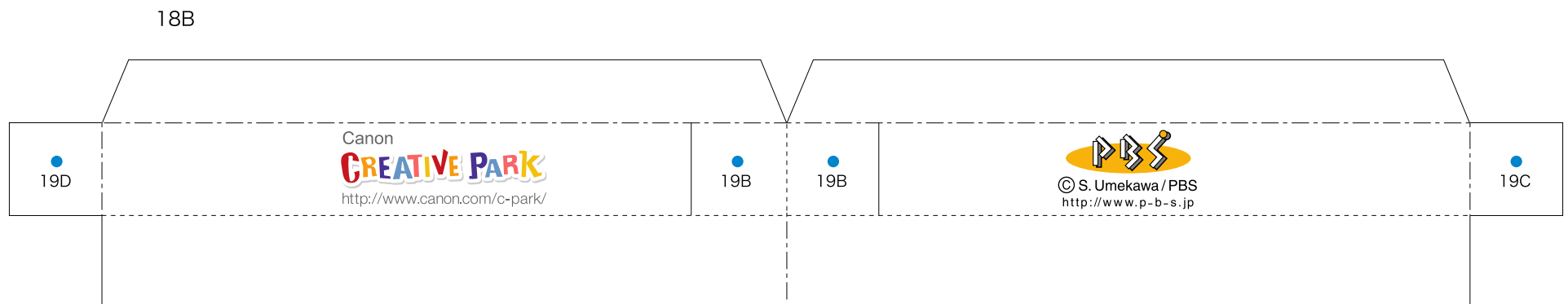
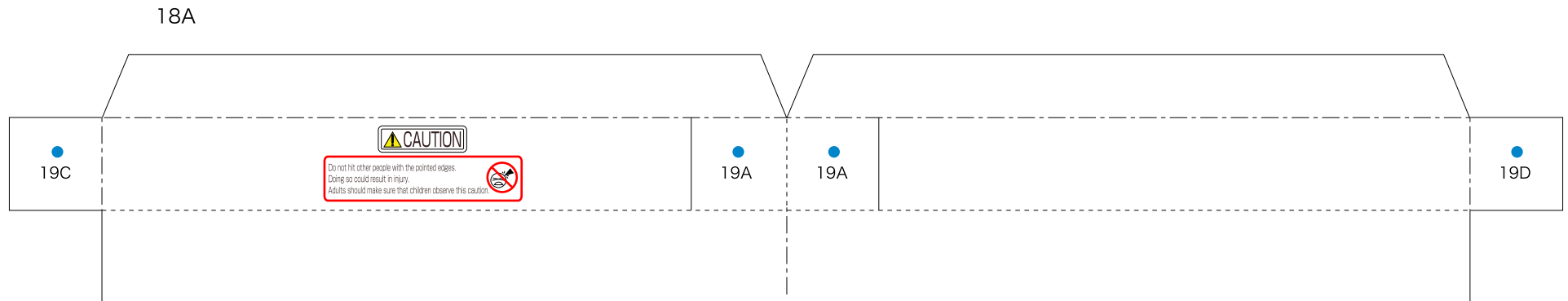


17B



Display stand

Back side (reinforcing parts)



Display stand

Back side (reinforcing parts)

