

Completed image



Example arrangement



You will need

- Scissors, glue, ruler, dried-up ballpoint pen

Assembly tips

- Begin by placing the ruler against the fold lines and drawing the empty ballpoint pen over them so that it is easy to make clean folds.

Lines and icons

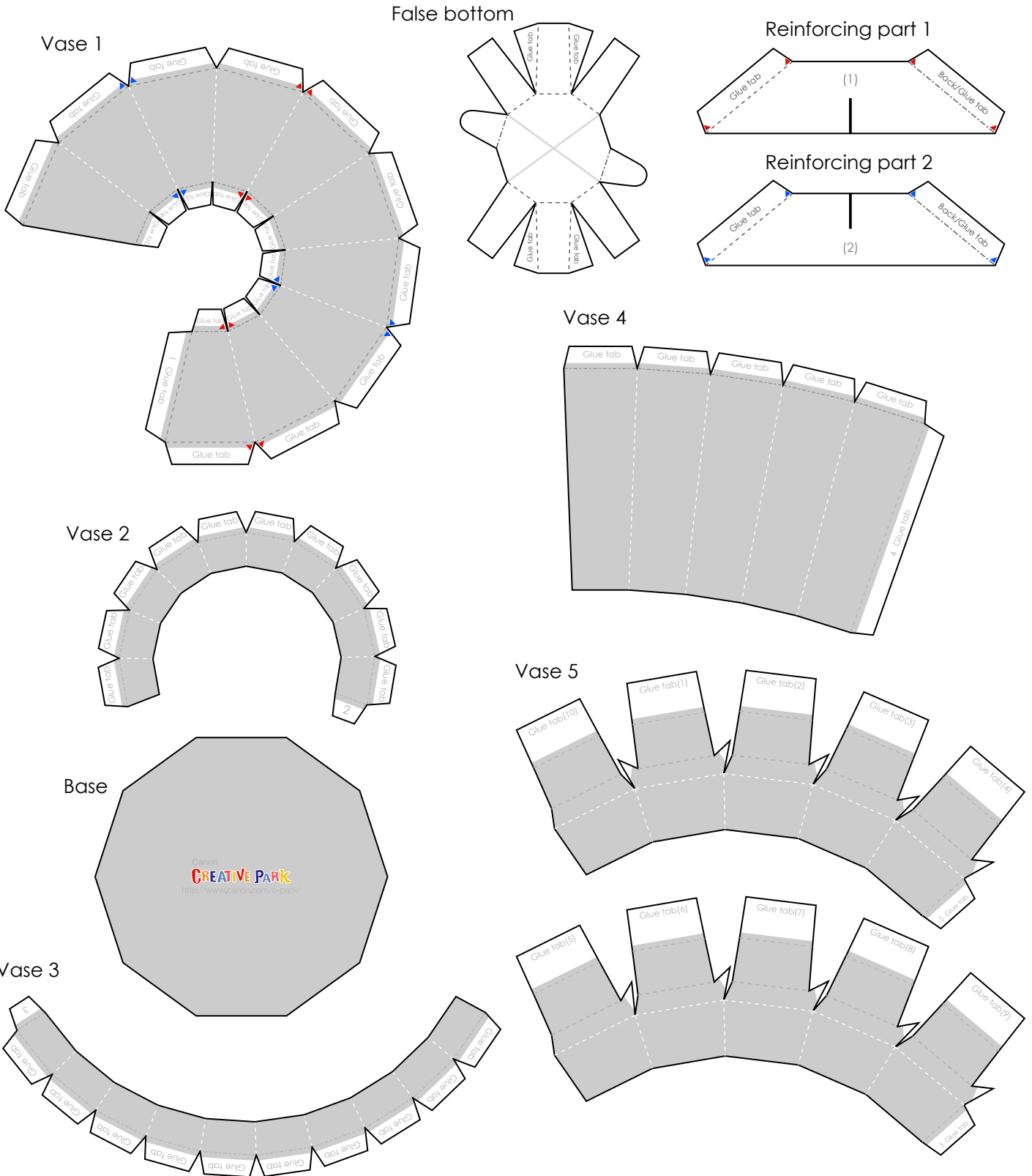
- Scissors line —————
- Mountain fold - - - - -
- Valley fold - - - - -
- Indicator line • • • • •
- Tips ★

Caution

- *Glue, scissors and other tools and materials may be harmful to children.
Please keep your work out of the reach of children.

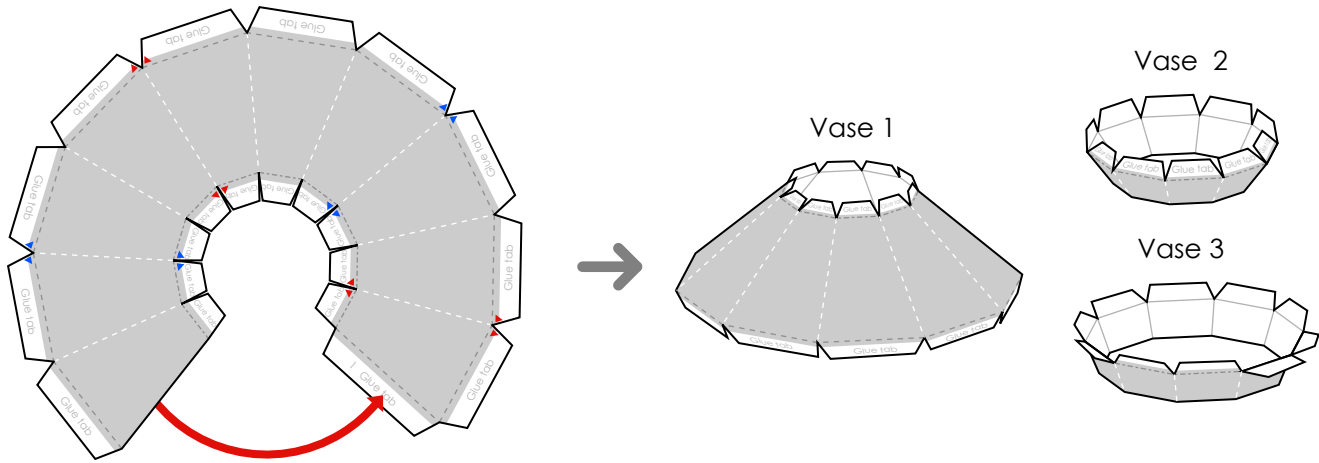
 Cut out the parts

Cut out each part along the scissors lines.

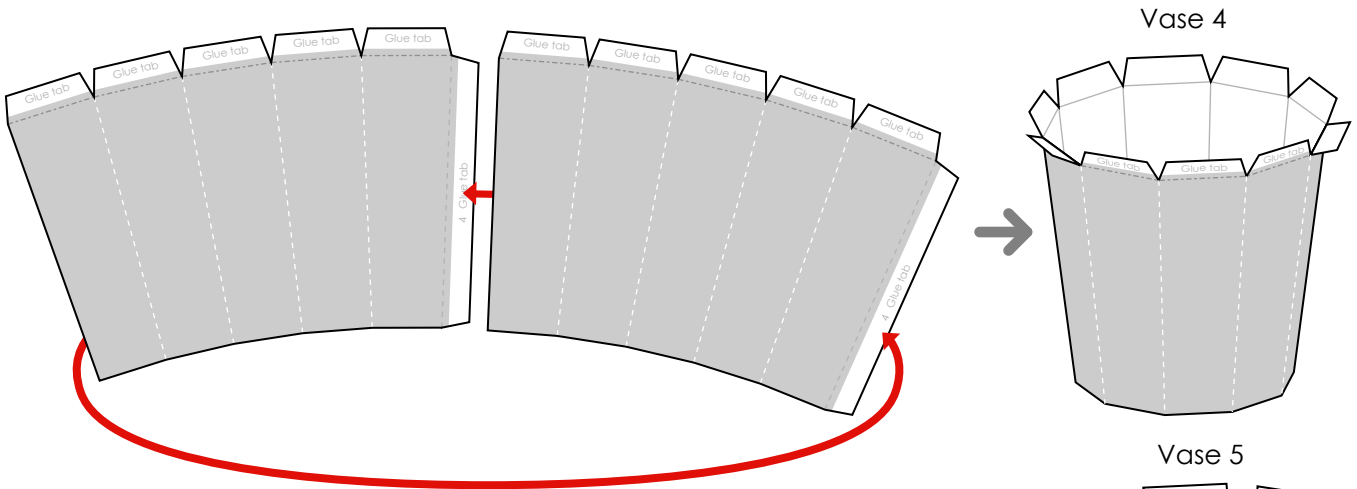


2 Assemble the parts

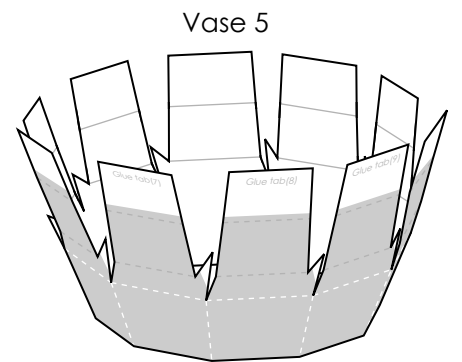
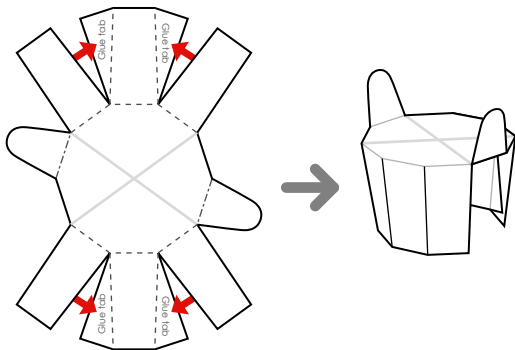
Fold and make creases on vases 1, 2 and 3, and glue each part together.



Fold and make creases on vases 4 and 5, and attach the two pieces together.



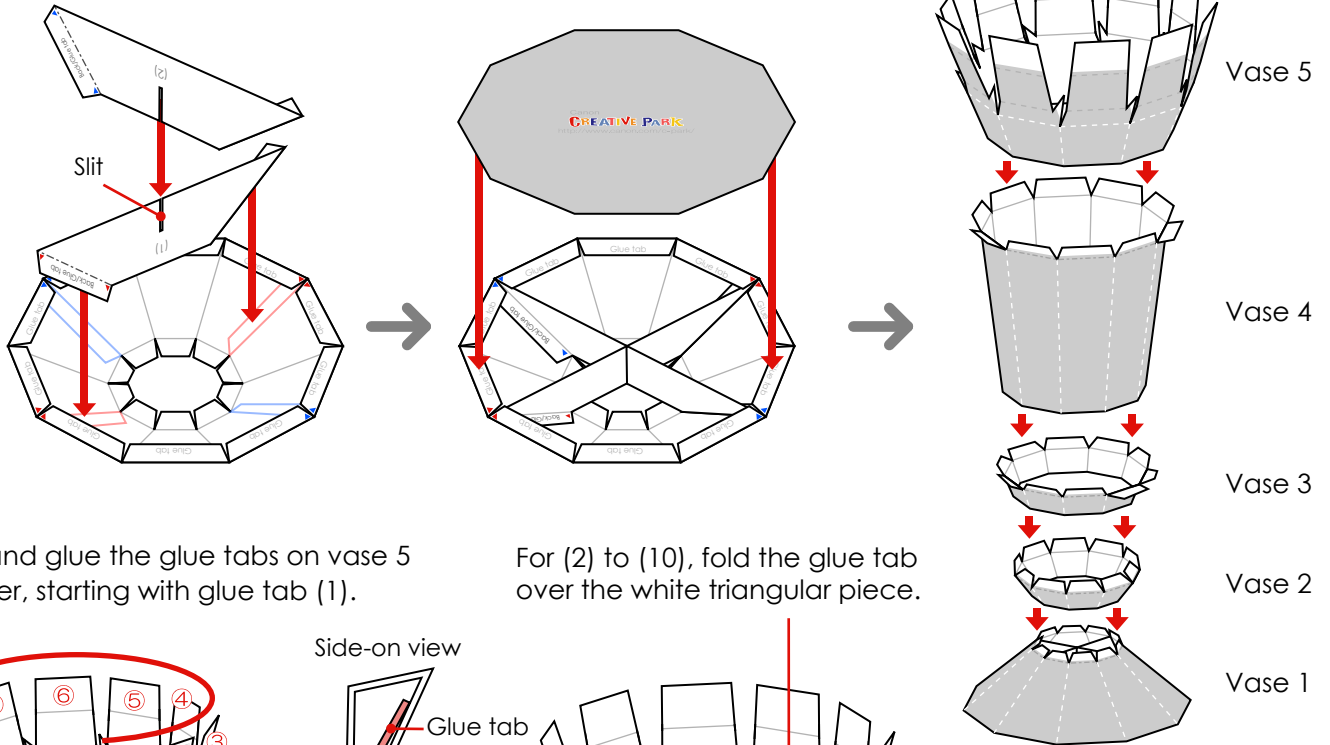
Fold and make creases on the false bottom, and attach its glue tabs together.



3 Complete the vase

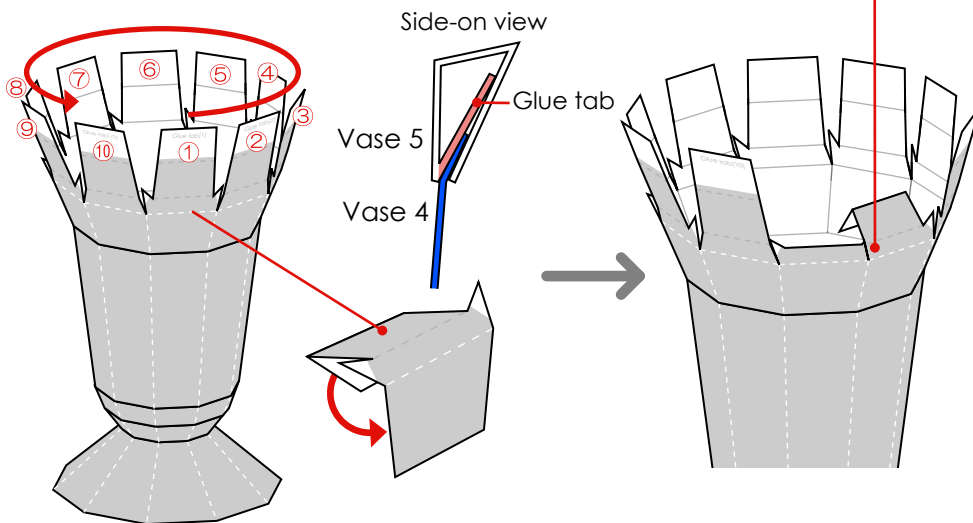
Attach the glue tabs on reinforcing part 1 to the red triangles on vase 1. Slide reinforcing part 2 onto the slits on reinforcing part 1, and attach its glue tabs to the blue triangles.

Glue together in order starting from vase 1.



Fold and glue the glue tabs on vase 5 in order, starting with glue tab (1).

For (2) to (10), fold the glue tab over the white triangular piece.



★ Put the false bottom inside to adjust the depth to your liking.

<Complete>

