

Completed image



Example arrangement





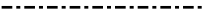


You will need

- Scissors, glue, ruler, dried-up ballpoint pen, rounded pencil (or similar object)

Assembly tips

- Begin by placing the ruler against the fold lines and drawing the empty ballpoint pen over them so that it is easy to make clean folds.
- Shaping the stem by rounding it using the rounded pencil or similar object will make it easier to roll.

Lines and icons

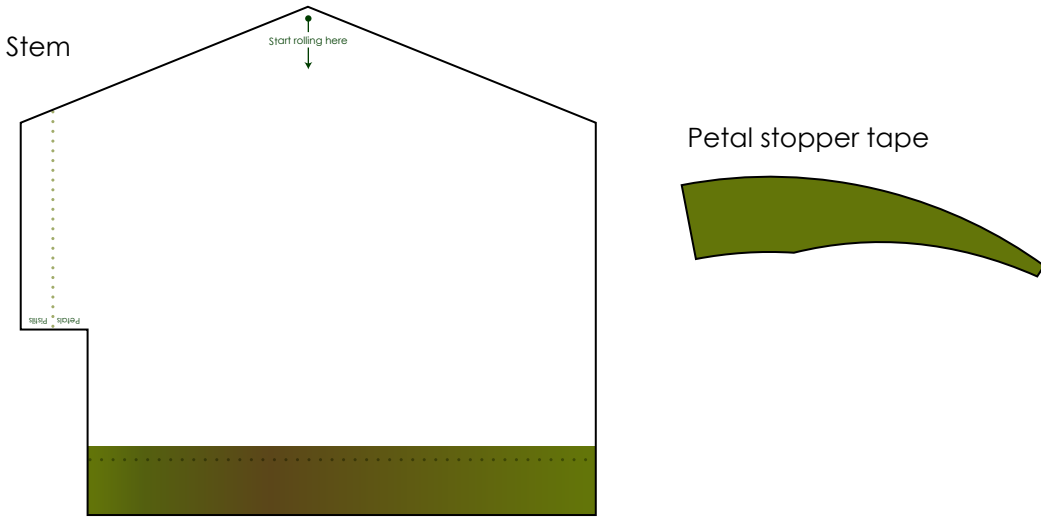
- Scissors line 
- Mountain fold 
- Valley fold 
- Indicator line 
- Tips 

Caution

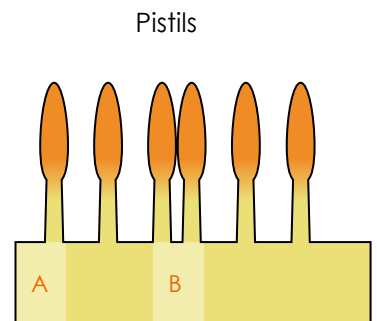
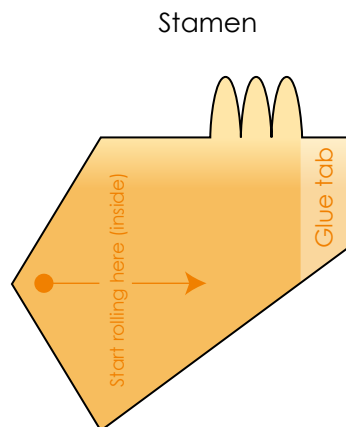
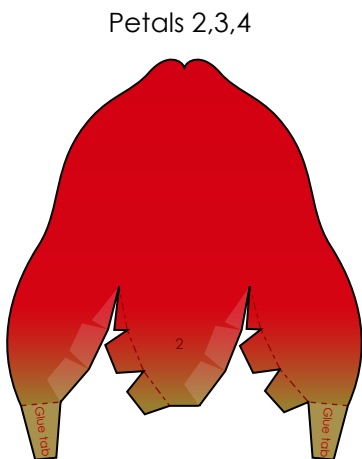
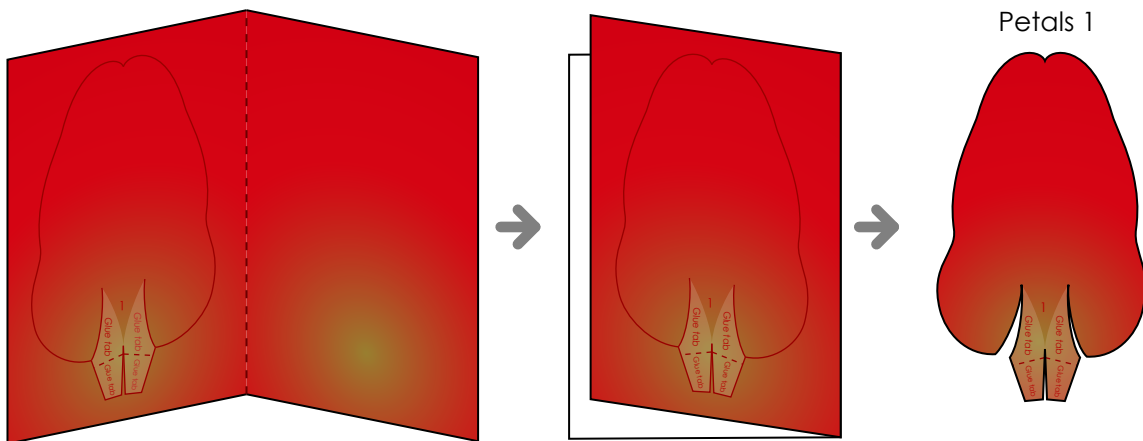
- \*Glue, scissors and other tools and materials may be harmful to children.  
Please keep your work out of the reach of children.

 **Cut out the parts**

Cut out the parts shown below, along the scissors lines.

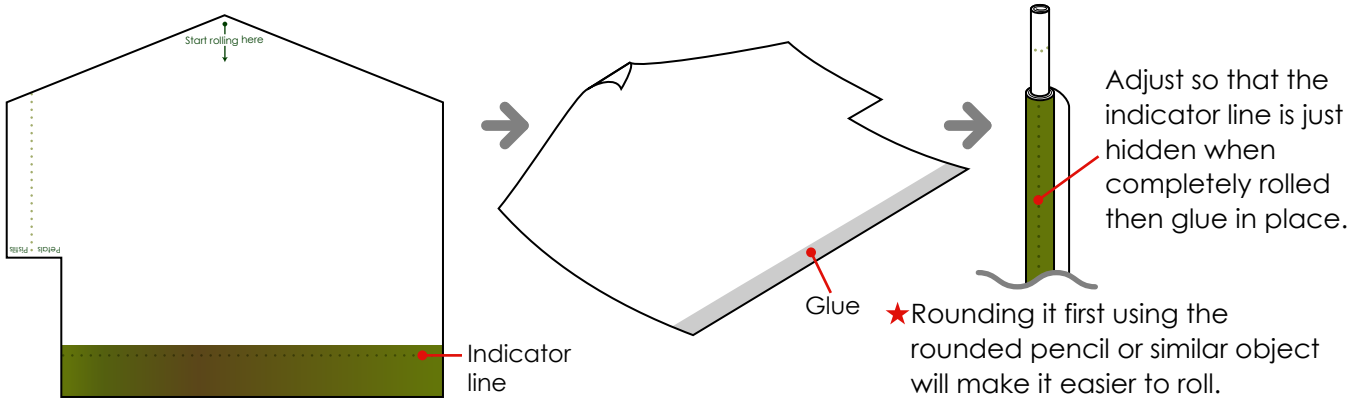


Cut out the bract (upper part), along the lines of the square around it, fold it in half and glue together. Then, cut out the bract (upper part) itself.



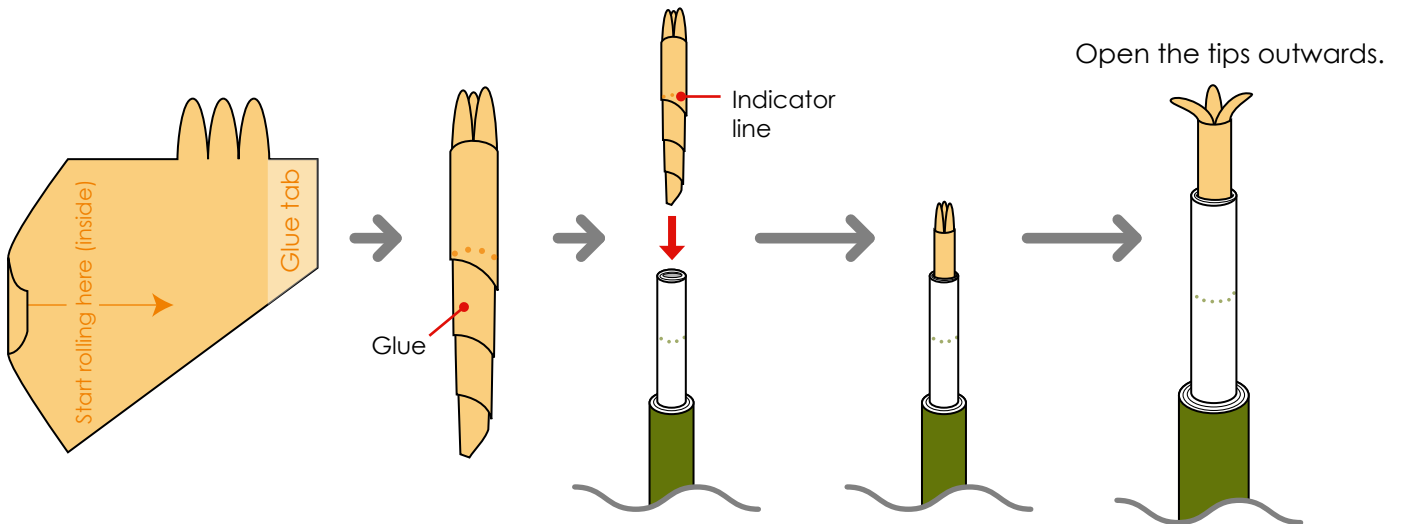
**2** Make the stem

Cut the stem out along the scissors line and roll it tightly starting at "Start rolling here."



**3** Make the stamen and pistils

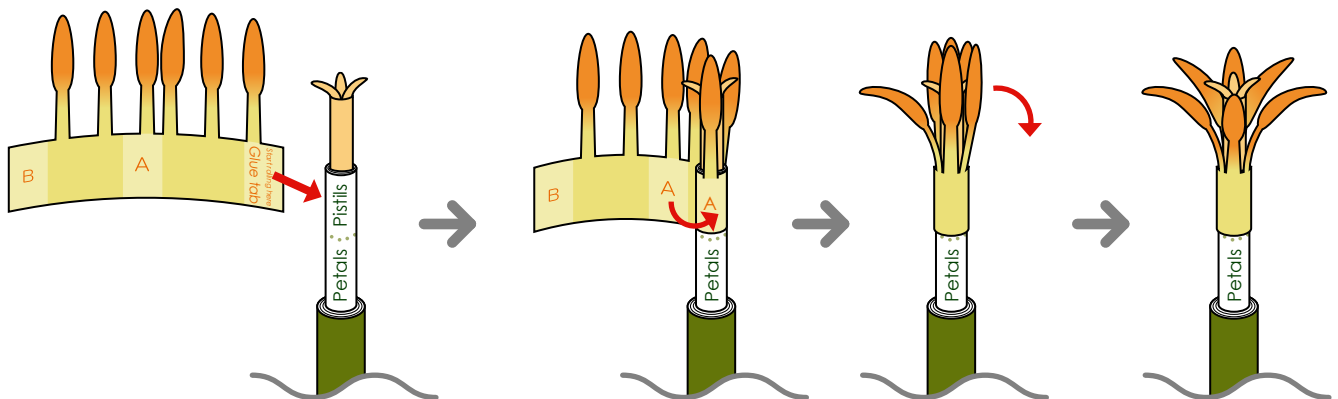
Tightly roll up the stamen, beginning at the end marked "Start rolling here (inside)" and insert the tip of the stem as far as the guide line.



Attach the pistils' glue tab (marked "Start rolling here") to the spot on the stem marked "Pistils" and roll up.

Apply glue to "A" and "B."

Round the outside.



**4** Make the petals

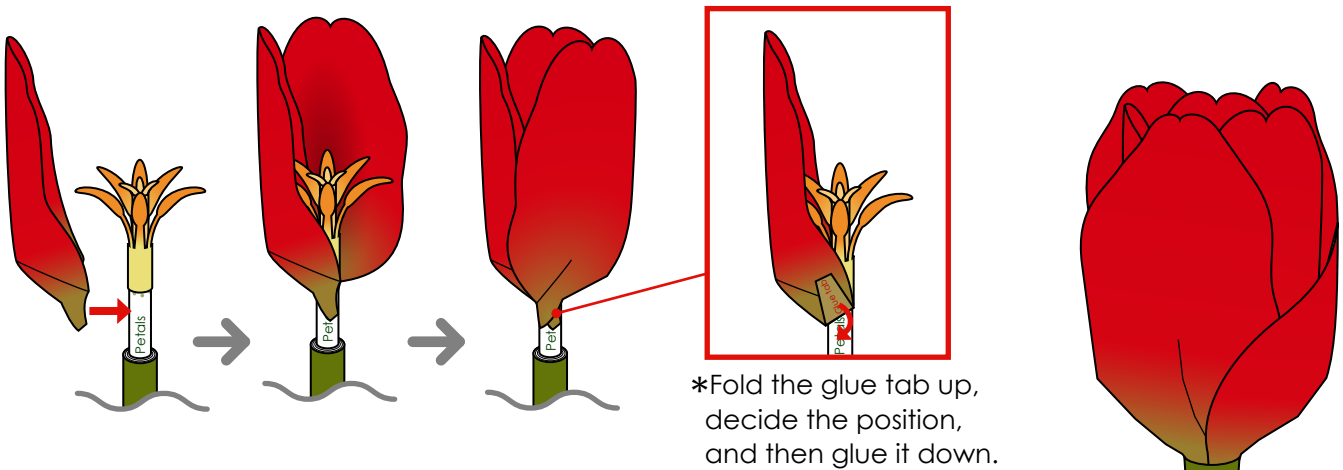
Glue petal 1's glue tabs to create an indentation in the center of the petal.

Glue the glue tabs on petals 2, 3 and 4.



**5** Complete the tulip

Glue the three petals below the pistils, with an even amount of overlap on each.



Attach petal 2 so that it overlaps petal 1 by half.

<Complete>

