



Bald eagle (Haliaeetus leucocephalus)

The bald eagle is one of the larger types of eagle, its body measuring between 76 and 92cm, and its wingspan can reach more than two meters. Its dark brown body and white head and shoulders are the bald eagle's most distinguishing features. The bald eagle is also the national bird of the United States of America. This, along with its striking appearance, makes it a very well-known bird in the United States. Bald eagles can be found mostly in coastal areas of the North American continent, along the shores, rivers, and lakes. The bald eagle is protected under the Migratory Bird Treaty Act, and the Bald Eagle Protection Act, enacted in 1918 and 1940 respectively. Many North American indigenous people regard the bald eagle as a sacred creature, and the birds or their feathers feature in many rituals and traditional costumes. In addition, the bald eagle is also regarded as a symbol of wisdom, power, and strength, and a sign of peace and friendship.

This papercraft is about one half the size of a real bald eagle.

Assembly Instructions

- 1) Carefully cut out the parts.
- 2) Make mountain folds and valley folds along the dotted lines, as indicated by the directions.
- 3) Assemble the parts in the order shown by the numbers on the glue tabs. (Read the assembly instruction for more information.)
- 4) Attach the parts in order. (Read the assembly instruction for more information.)
- 5) Your Paper craft model is finished.

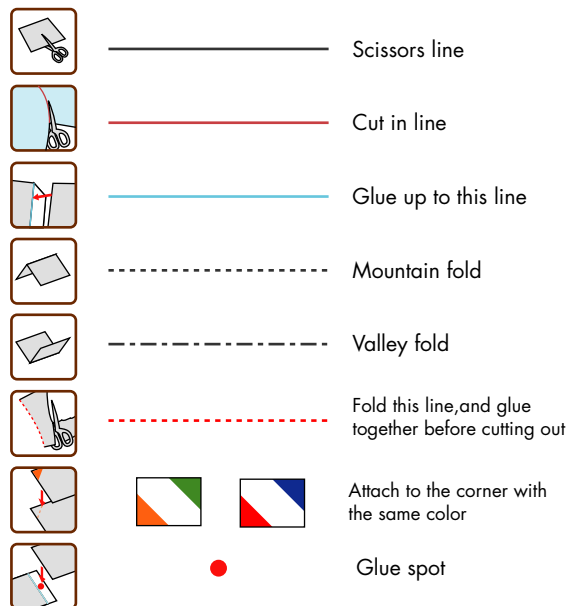
Tools

Scissors, glue (We recommend craft glue.)

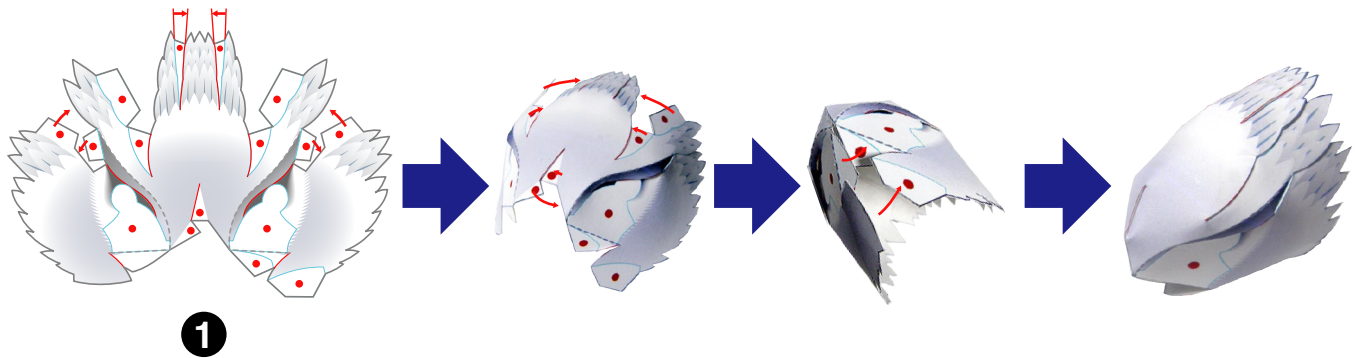
Caution

Glue, scissors and other tools may be dangerous to young children so be sure to keep them out of the reach of young children.

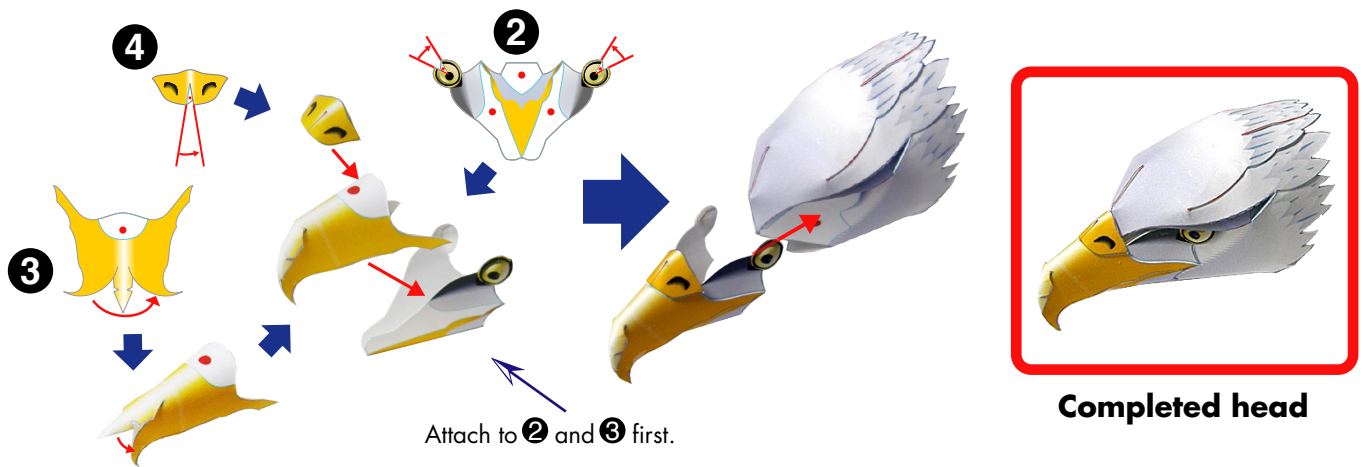
Notation Key



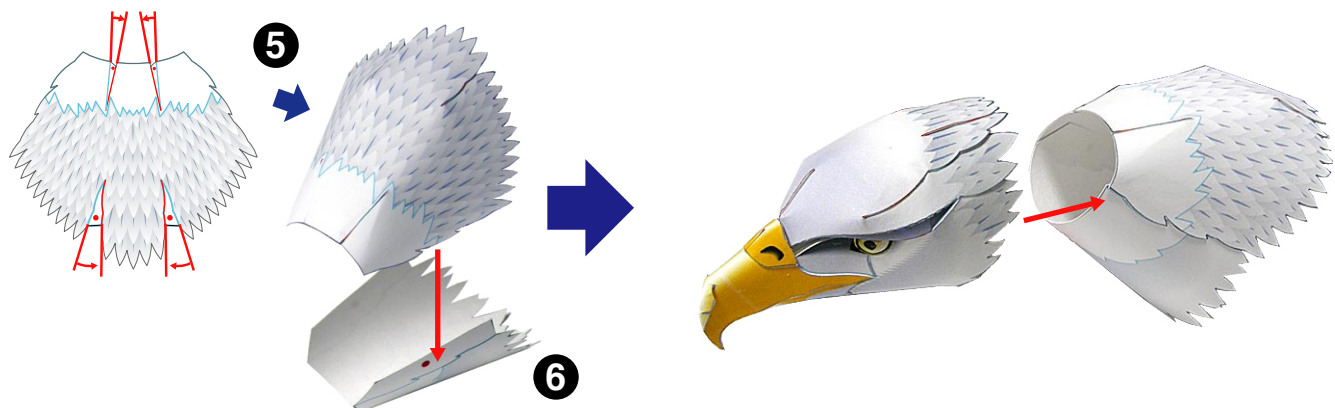
Assemble ①.



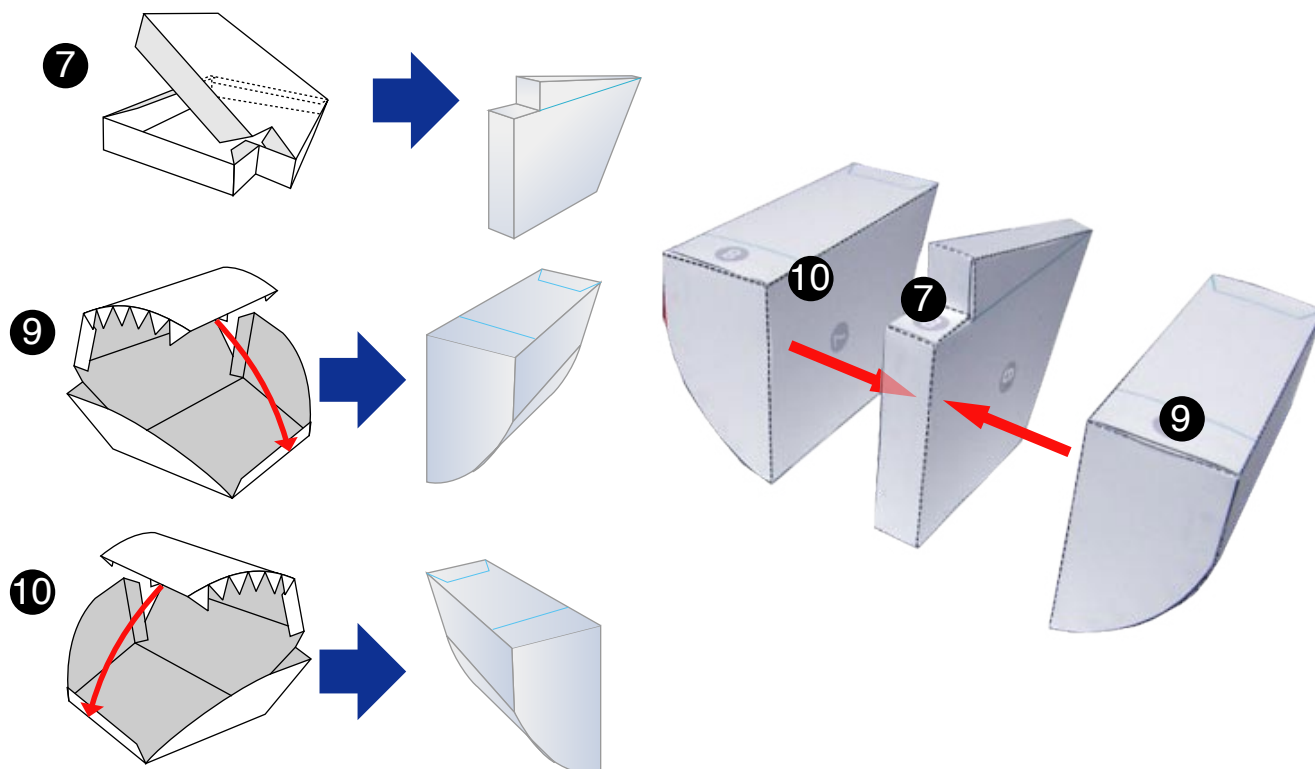
Assemble ②, ③, ④, and attach it to ①.



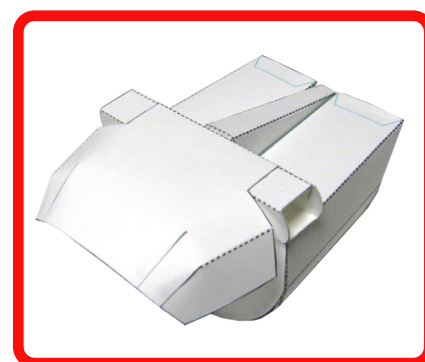
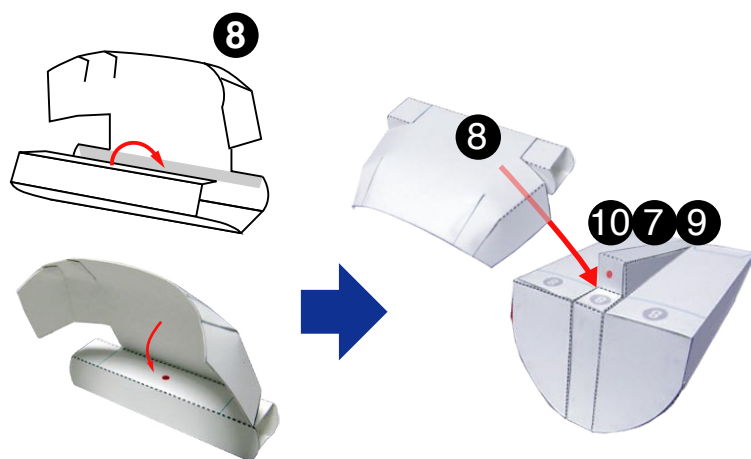
Assemble ⑤ and ⑥, and attach it to the head.



Make the internal frame of the body.



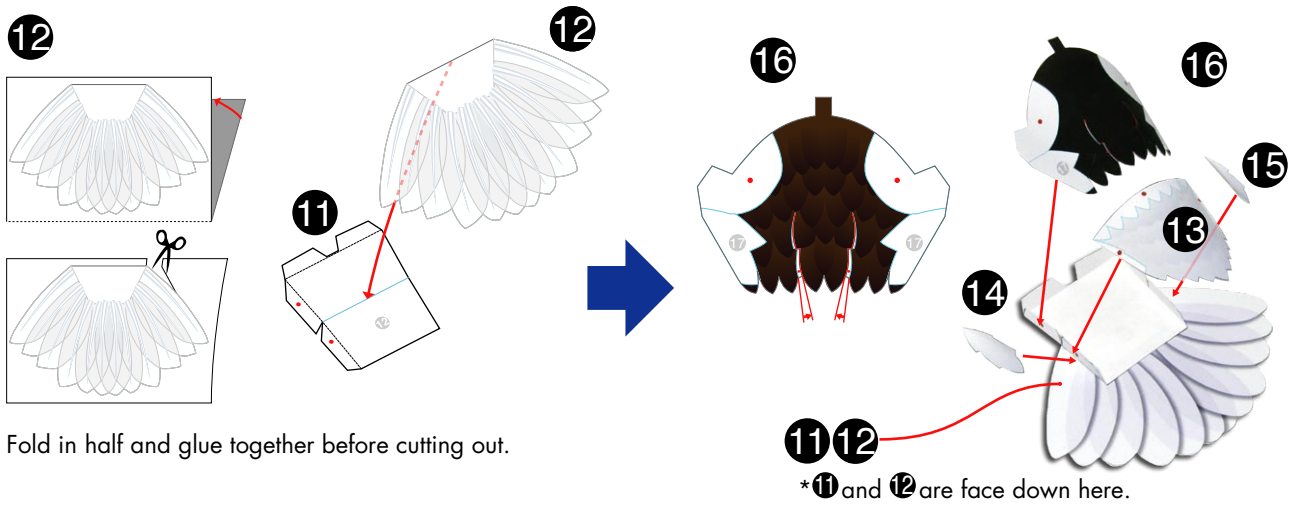
Assemble ⑧, and attach it to the internal frame of the body.



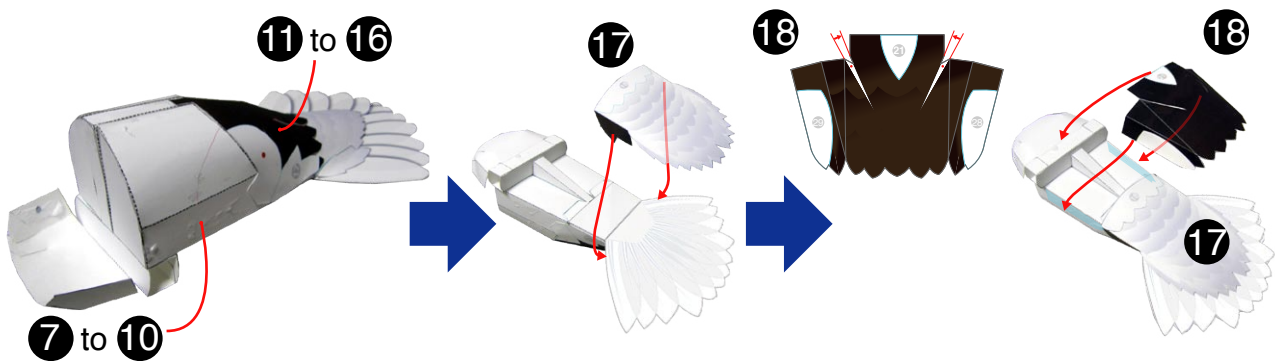
Completed internal frame

The shape of ⑧ is very complicated, so take extra care when assembling it, following the assembly order shown in the above diagram.

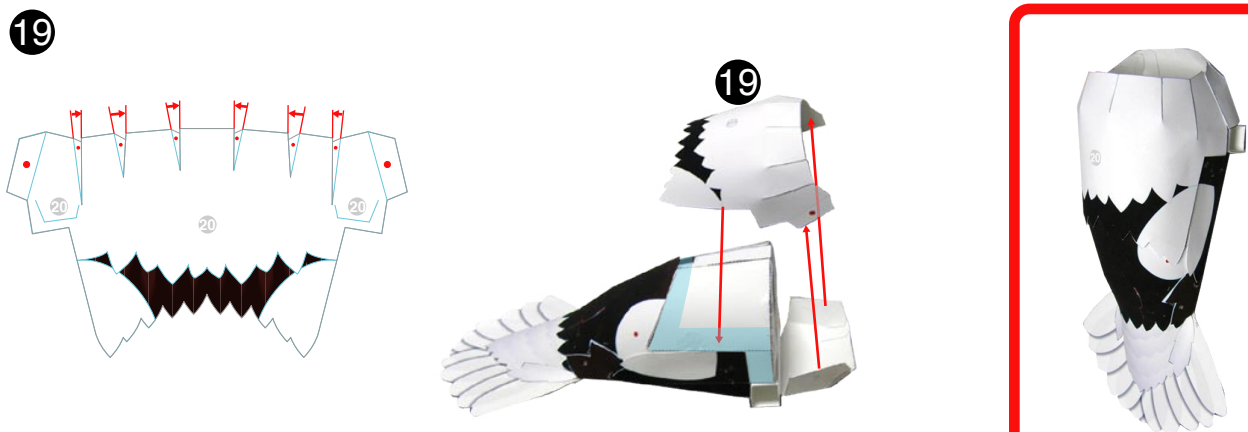
Assemble ⑪ and ⑫, and attach ⑬, ⑭, ⑮, ⑯ to them.



Glue the tail feathers to the internal frame, and attach ⑰, ⑱ to them.

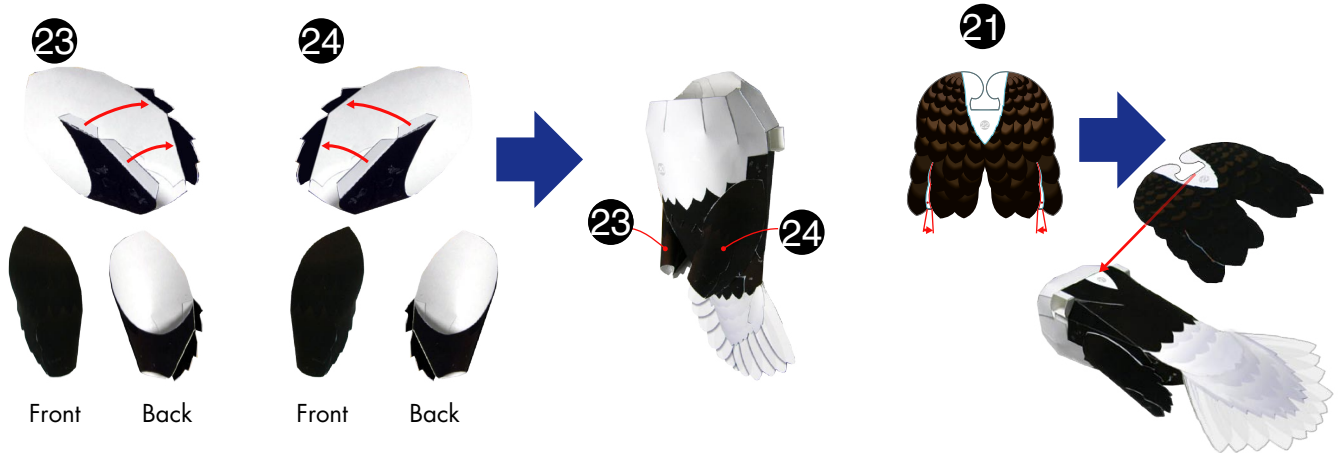


Assemble ⑲, and attach it to the body.

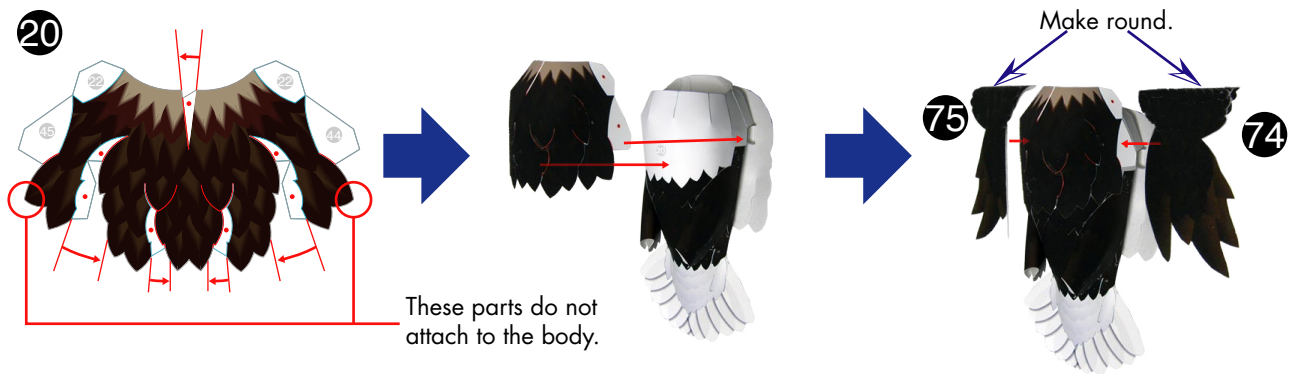


Completed part

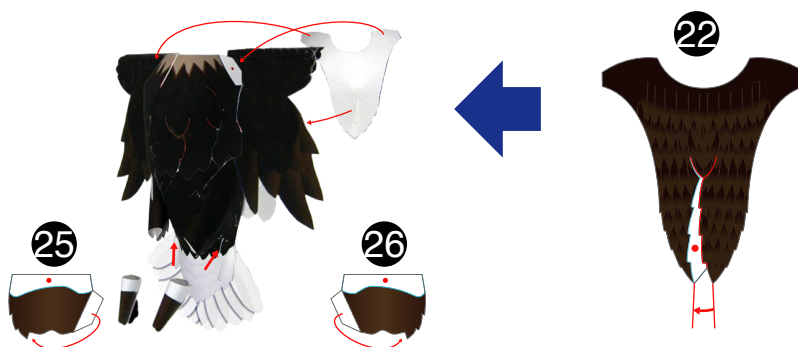
Assemble 23 and 24, glue them together and attach them to the body, and attach 21 to the body.



Assemble 20, glue them together and attach them to the body, and attach 74 and 75 to the body.



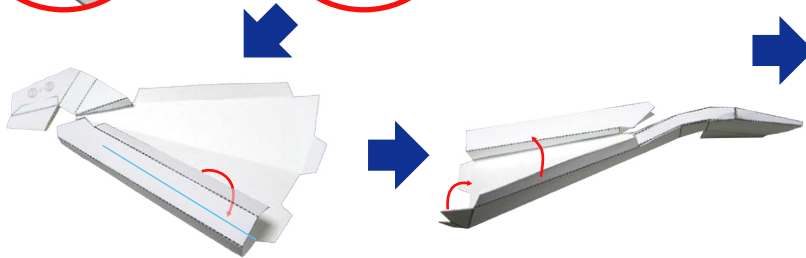
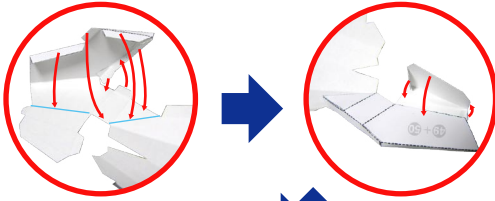
Assemble 25 and 26, and attach them to the body, and attach 22 to the body.



Completed the body

Assemble 39 and 40, and assemble the wing frame.

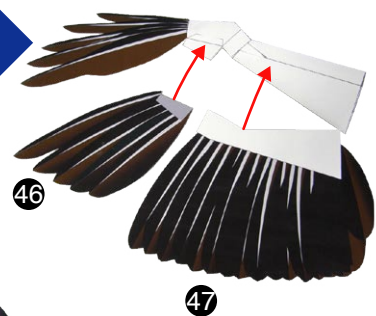
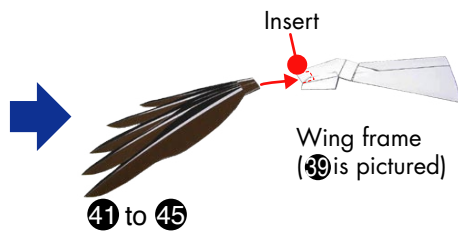
39 (40)



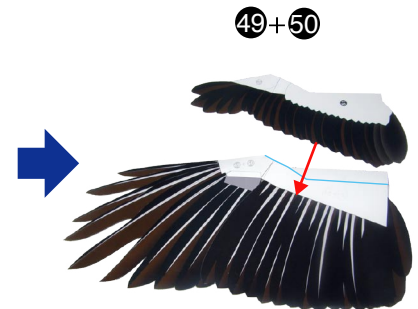
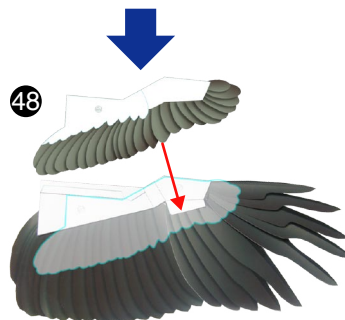
Completed the wing frame

Assemble 40 in the same way so that both parts are symmetrical.

Glue 41 to 45 together, and insert them into the wing frame. Then, attach parts 46, 47, 48, 49 and 50.

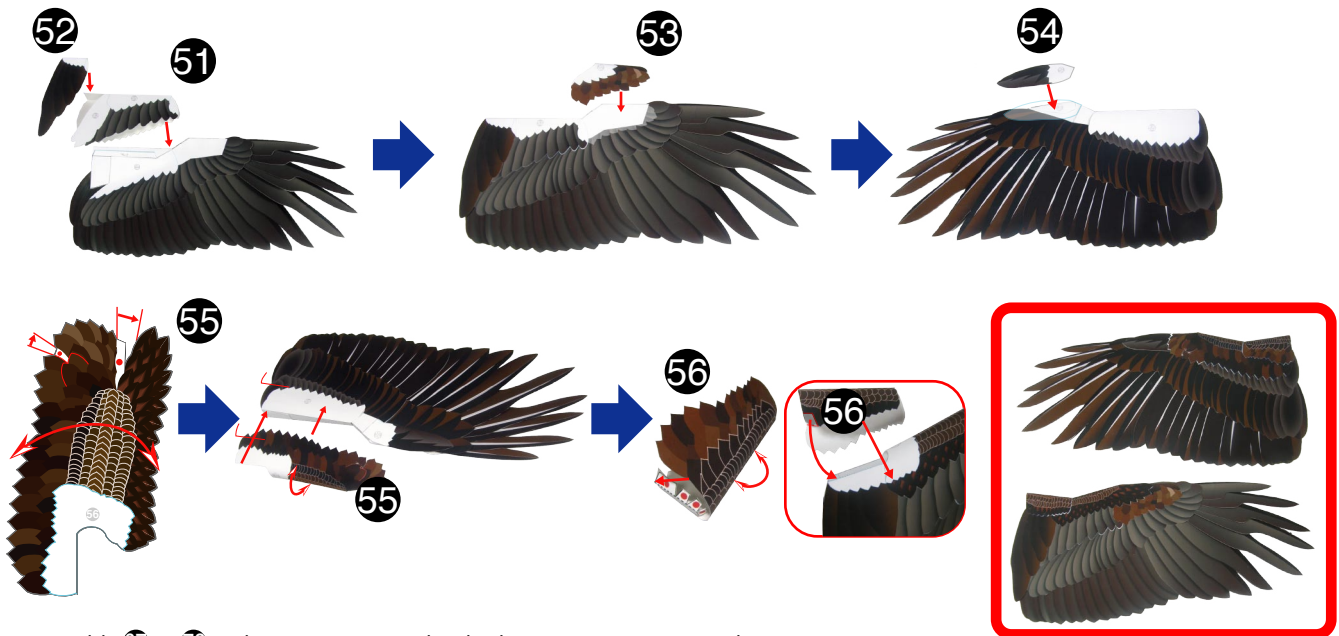


Attach the parts to look like this.



Assemble 57 to 66 in the same way so that both parts are symmetrical.

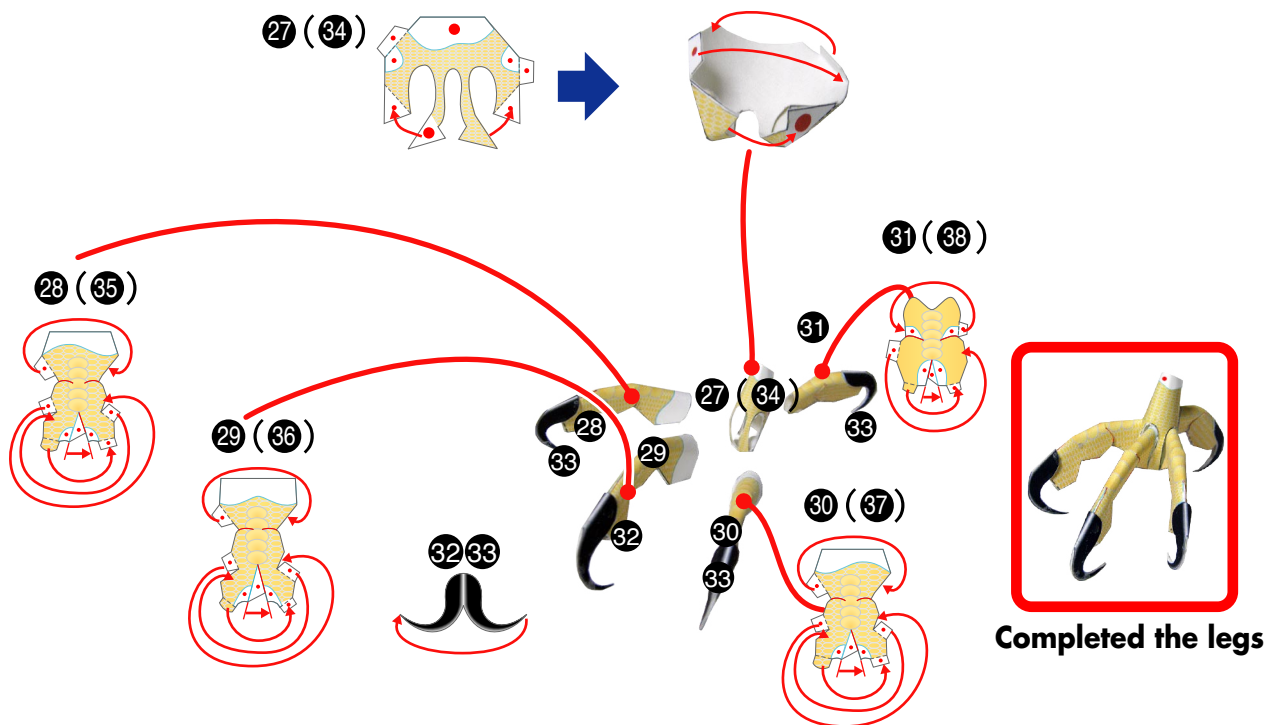
Assemble 51 to 56, and the wings are complete.



Assemble 67 to 72 in the same way so that both parts are symmetrical.

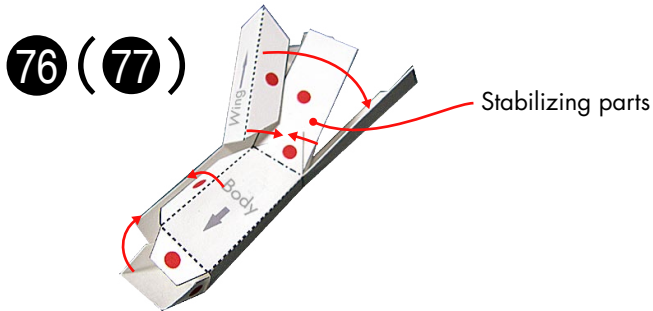
Completed wings

Assemble 27 to 38, and make the legs.

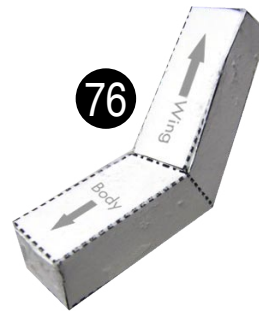


Completed the legs

Assemble 76 and 77, and make the body-wing connector.



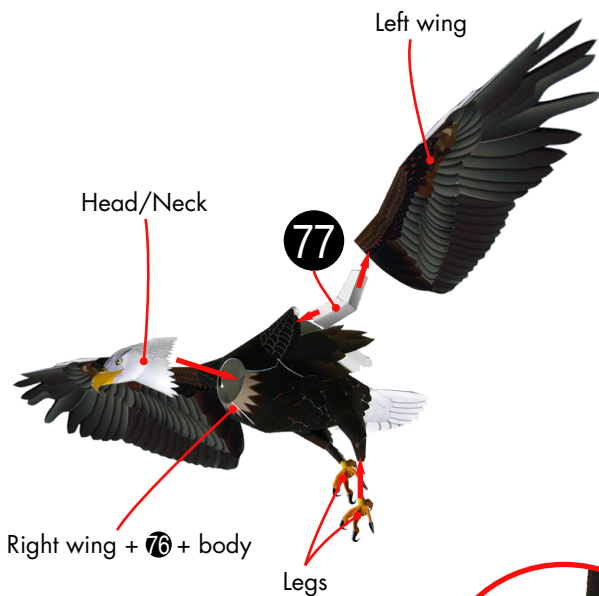
76 is for the right wing, and 77 is for the left wing.
Put stabilizing parts in each of them, and attach.
Assemble them so they are symmetrical on both sides.



For the right side



For the left side



*As shown in the picture, hang it from the ceiling with fishing wire or string.



*Assemble 73, and perch the eagle on it with both feet.



*Fasten both legs onto the pedestal, for greater stability.



*Balance the eagle on 3 points - its two feet and tail.

Complete!