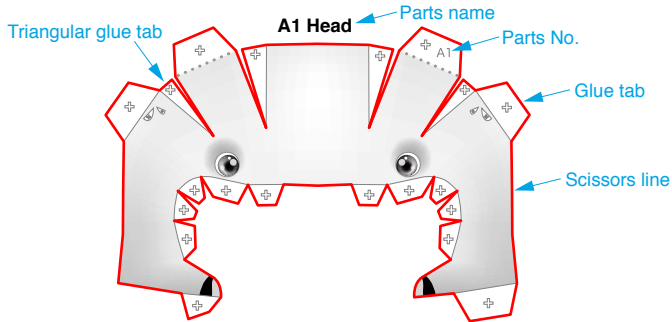




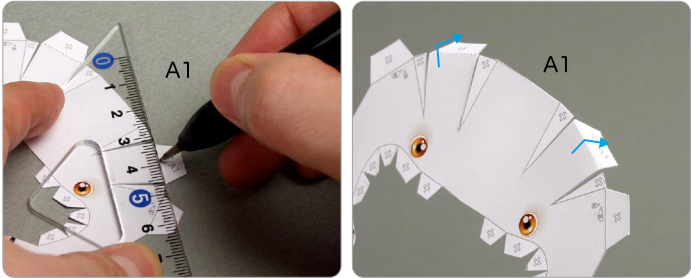
**Assemble the head**

Use pattern: Page2.

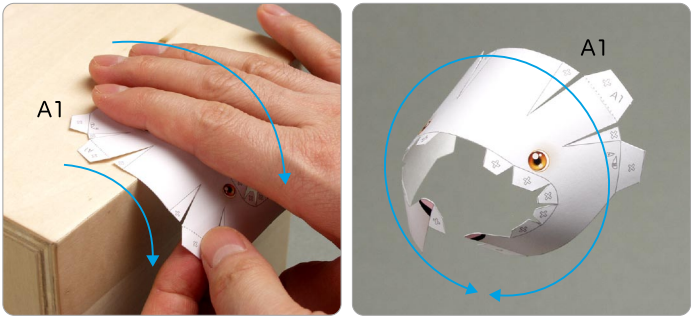
- ① Cut out A1 by cutting along the lines.
- ★ Cut along the line marked



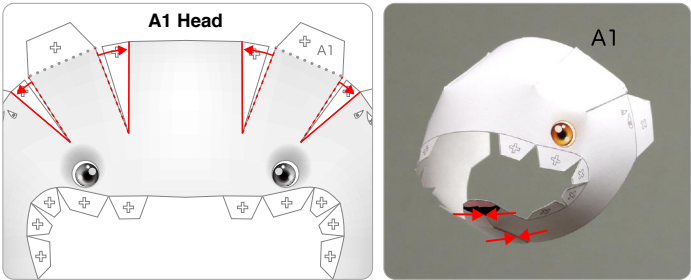
- ② Make a mountain fold on A1.
- ★ Trace along the mountain fold line with a stencil pen, scoring it to make it easier to fold.



- ③ The parts will be easier to assemble if curled.
- ★ Using the photo as a guide, move your fingers in the direction of the arrow, adjusting the pressure to curl the paper.



- ④ Add a slight curl to A1 when attaching it.
- ★ Attach the triangular glue tabs so that the front side becomes convex.
- ★ Using the photo as a guide, attach in the direction of the arrow.



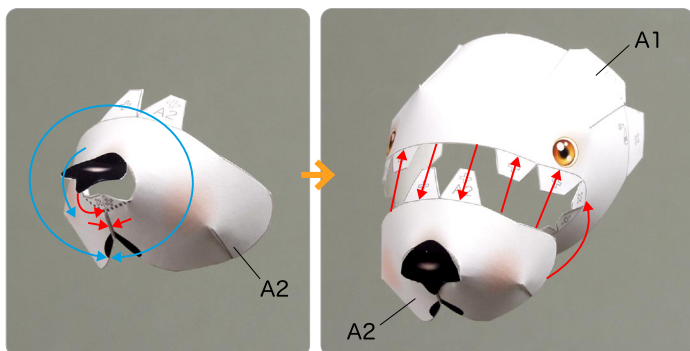
Tools	Notation Key
Scissors	Scissors line
Paste, or woodwork glue	Mountain fold
Stencil pen, or bodkin	Valley fold
Ruler	Glue spot
	A1, B1      Parts No.

- ◆ The Assembly instructions are divided into four blocks: A (head), B (body), C (waist, legs, tail), and D (display stand). Follow the instructions for each block to assemble your sea otter.
- ◆ ★ marks a basic assembly technique that remains the same regardless of the part. Instructions are printed only for the first instance.

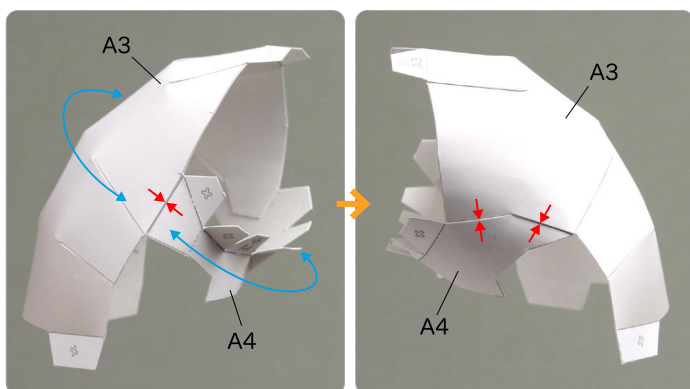
**<Caution>**

- ✂ Keep scissors and glue away from small children.
- ✂ Be careful not to cut your fingers when using scissors.

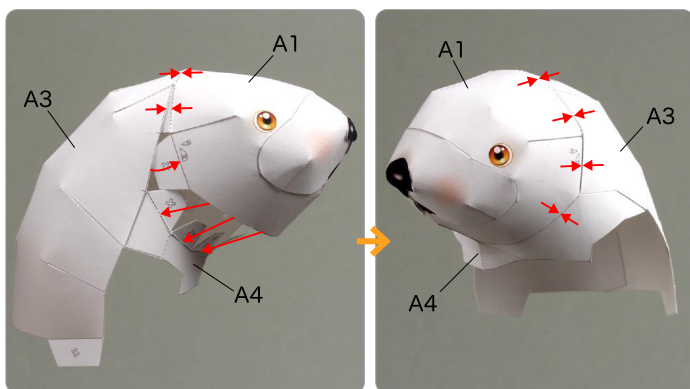
⑤ Assemble A1 and A2.



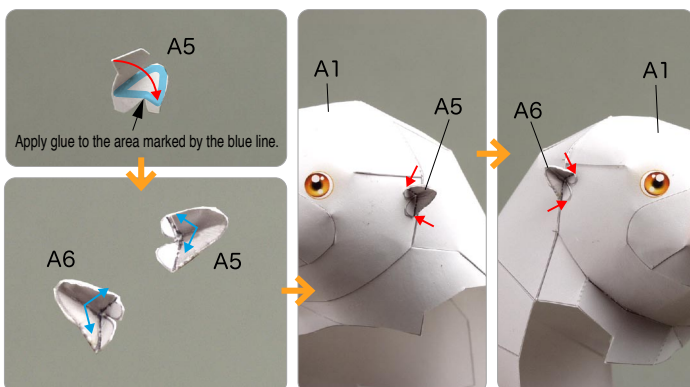
⑥ Assemble A3 and A4.



⑦ Assemble A1, A3 and A4.



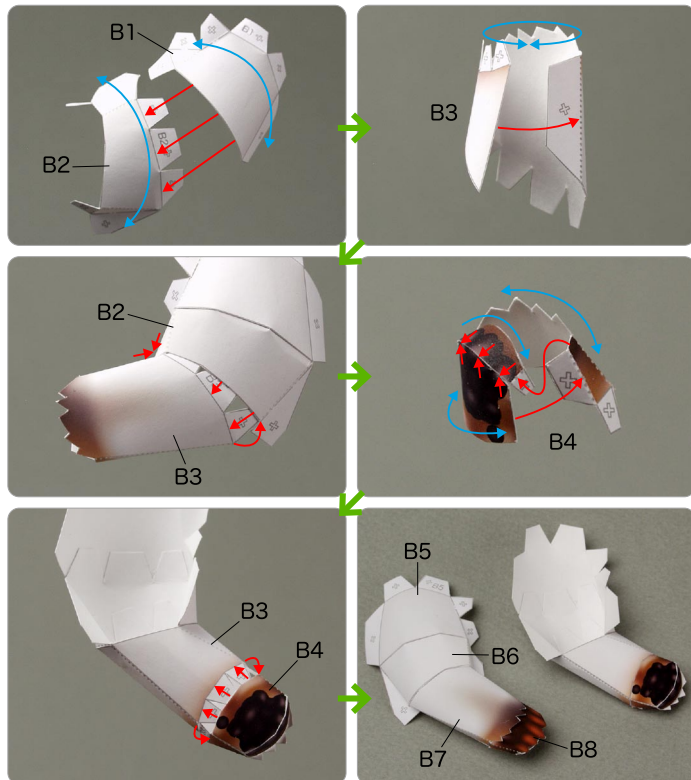
⑧ Assemble A5 and A6, and attach them to A1.



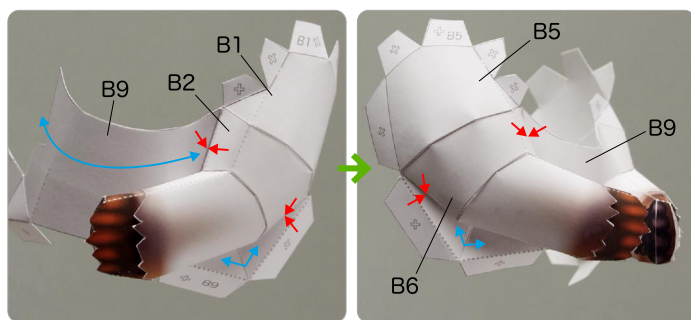
## B Assemble the body

Use pattern: Page3/Page4.

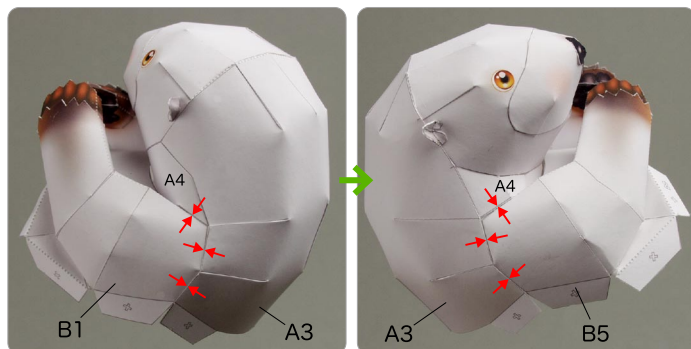
- ① Assemble B1 to B4, attach them in order.  
Assemble parts B5 to B8 together in the same way.



- ② Assemble B2 and B6 to B9.

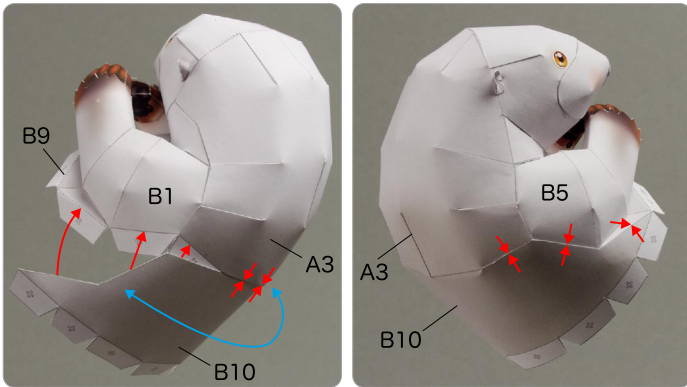


- ③ Assemble B1 and B5 to the neck.

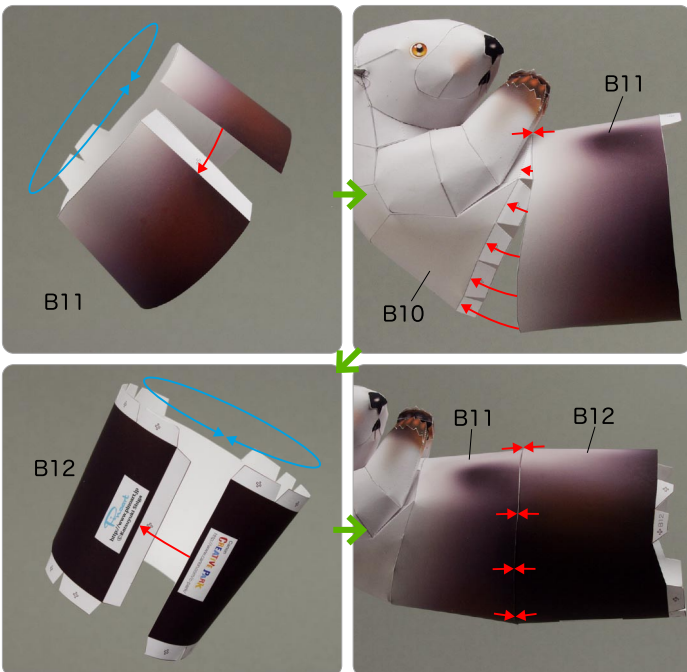




④ Assemble the neck to B10.



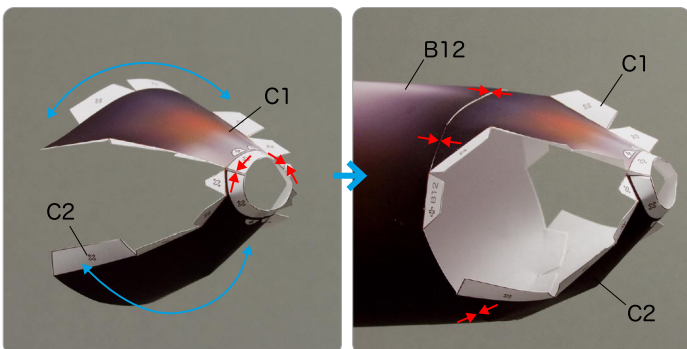
⑤ Assemble B11 and B12, and attach them to B9 and B10, and the body is complete.



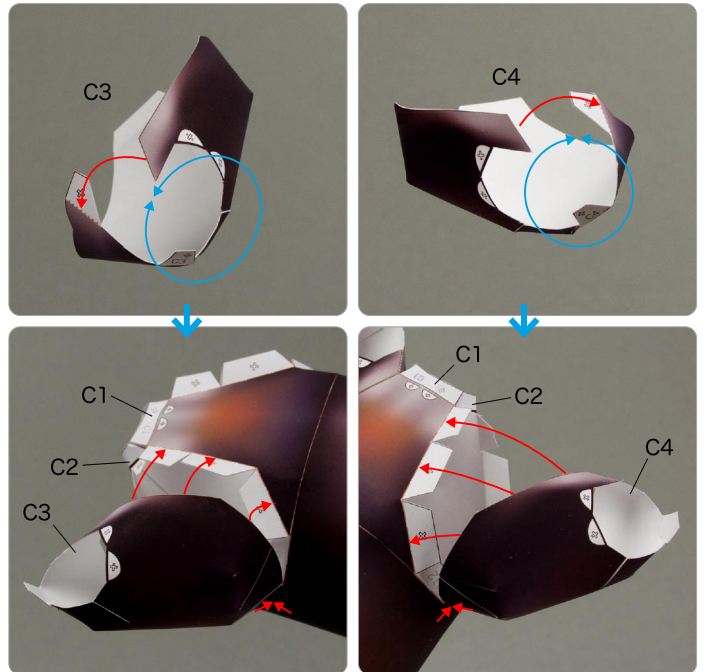
## C Assemble the waist, feet and tail

Use pattern: Page5/Page6.

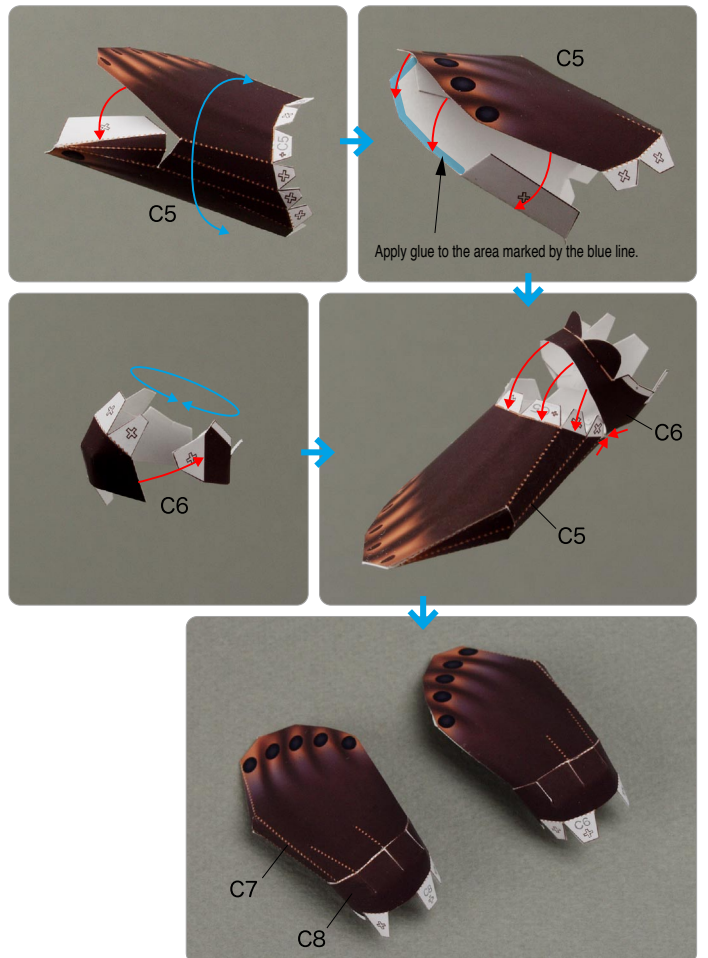
① Assemble C1 and C2, and attach them together. Next, attach that to B12.



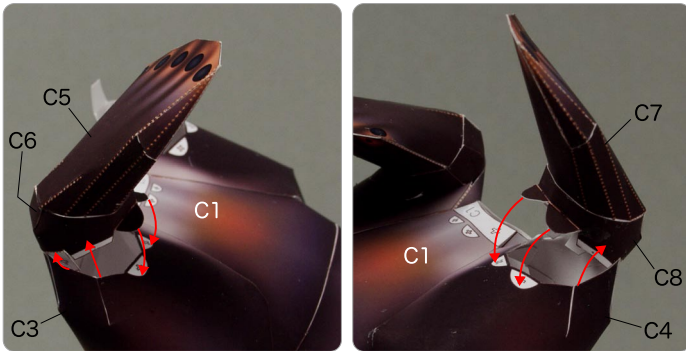
② Assemble C3 and C4, and attach them to the waist.



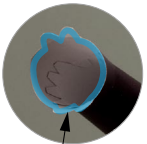
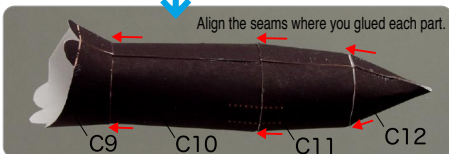
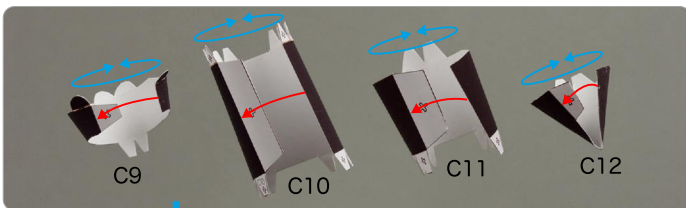
③ Assemble C5 and C6, and attach them together. Assemble C7 and C8 together in the same way.



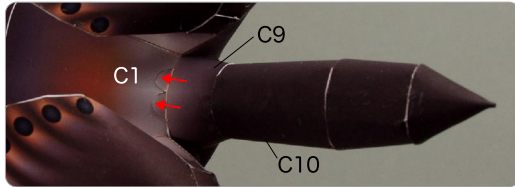
- ④ Attach the feet to the thighs.



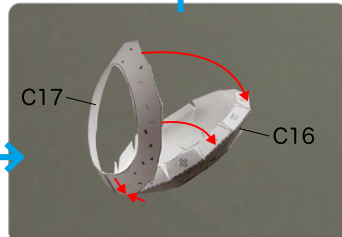
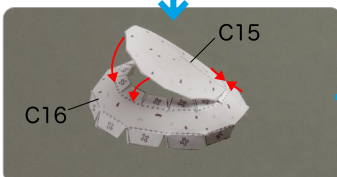
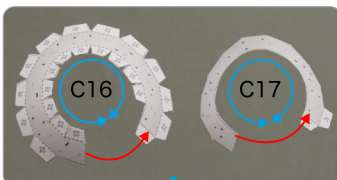
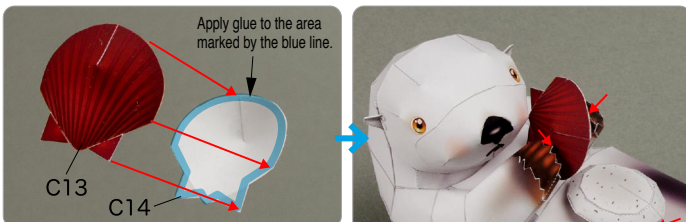
- ⑤ Assemble parts C9 to C12, and attach them together. Attach the tail to the waist.



Apply glue to the area marked by the blue line.



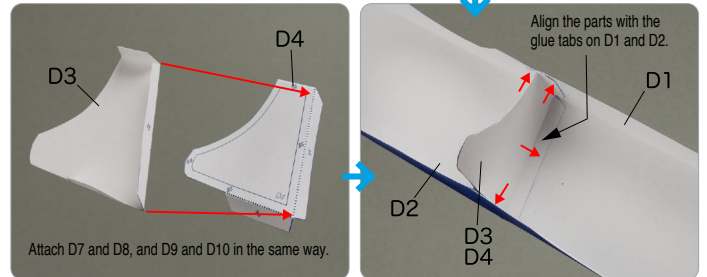
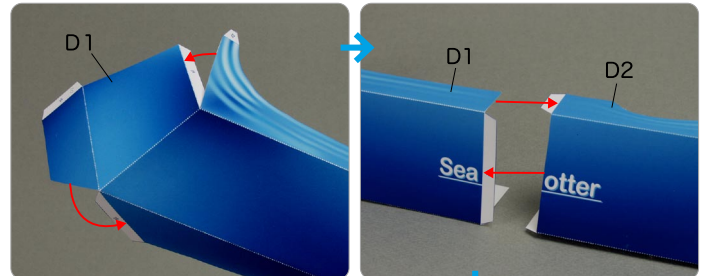
- ⑥ Assemble the scallop shell and rock, attach them to the sea otter, and your sea otter is complete.



## D Assemble the display stand

Use pattern: Page7 to Page10.

- ① Assemble D1 and D2, and attach them together. Then, attach D3 and D4.



- ② Assemble D5 and D6, D7 and D8, and D9 and D10 together in the same way. Finally, put the sea otter on the display stand, and you're done!

