

**CREATIVE PARK**  
<http://www.canon.com/c-park/>



- Mammalia Carnivora order Mustelidae family
- Length: Approx. 50 to 130cm (approx. 1.6 to 4.3 feet)
- Weight: Approx. 30 to 40kg (approx. 66 to 88 lbs)
- Habitat: North Pacific Ocean coastal areas

The sea otter is a marine mammal that spends most of its life floating on the surface of the ocean. The soft, dense fur which can hold air bubbles within it, and the sea otter's large lungs mean they can easily float on top of the water. They are the only mammals, apart from primates, that use tools, and they use rocks to break open sea urchins, abalone, and other shellfish to eat, as they float face up in the water. Each sea otter has its own favorite rock to use, which is kept safely in a pouch on the otter's left side. In the early 20th century, sea otters came close to extinction due to overfishing and oil spills from grounded tankers. They have now been granted protection and numbers are on the increase, but still retain status as an endangered species.



Tools	Notation Key
Scissors	——— Scissors line
Paste, or woodwork glue	..... Mountain fold
Stencil pen, or bodkin	- - - - - Valley fold
Ruler	+ Glue spot
	A1, B1 Parts No.

◆ The Assembly instructions are divided into four blocks: A (head), B (body), C (waist, legs, tail), and D (display stand). Follow the instructions for each block to assemble your sea otter.

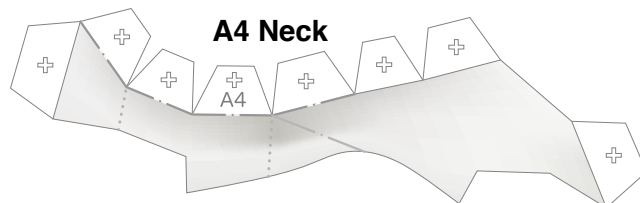
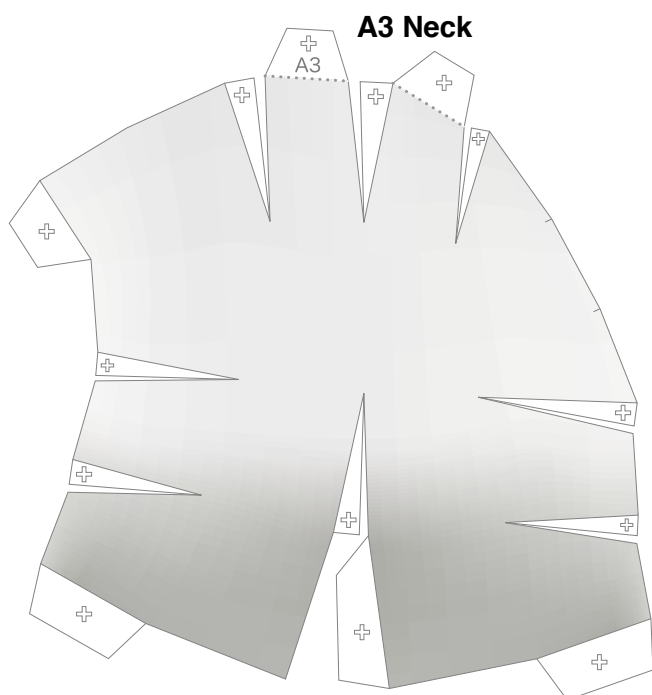
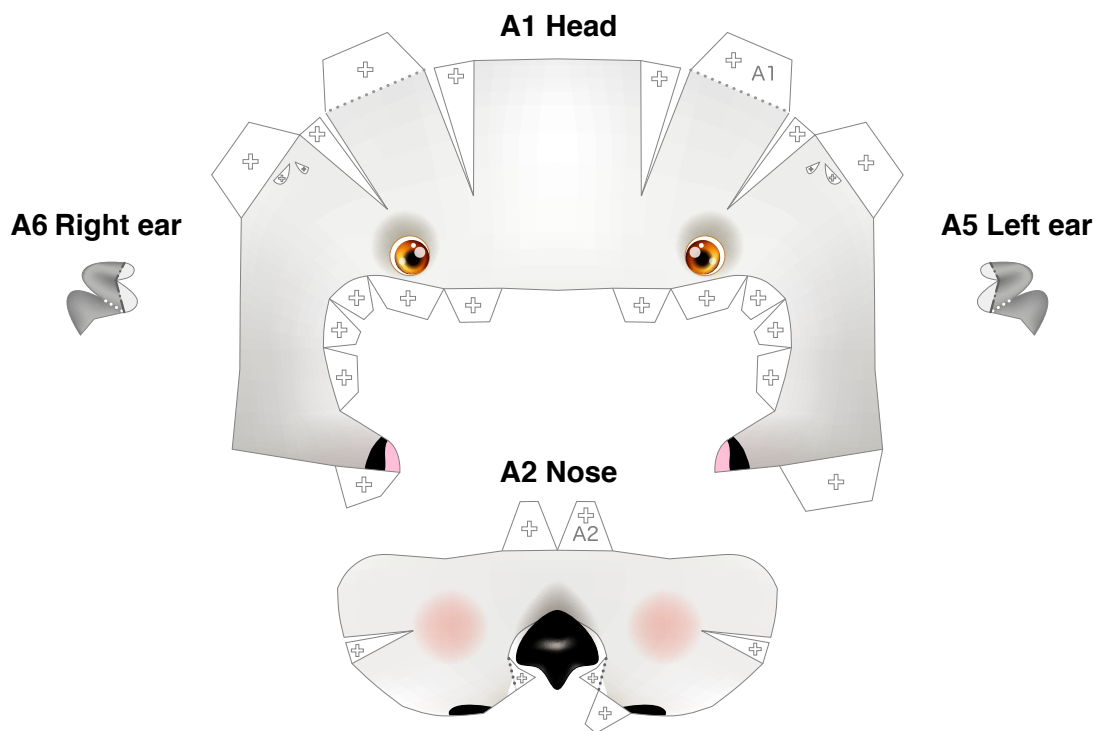
<Caution>

- ※ Keep scissors and glue away from small children.
- ※ Be careful not to cut your fingers when using scissors.



## Head parts

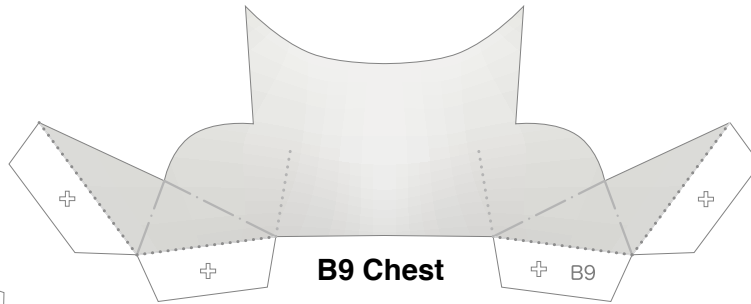
Refer to Assembly Instructions: Page1 / Page2.



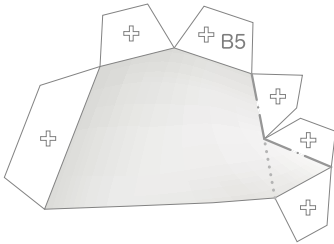


## Body parts

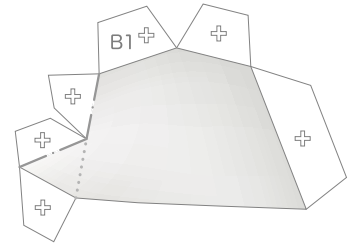
Refer to Assembly Instructions: Page2 / Page3.



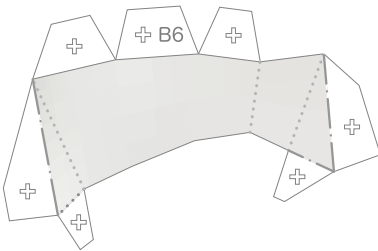
**B9 Chest**



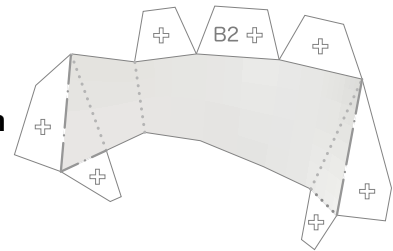
**B5 Right shoulder**



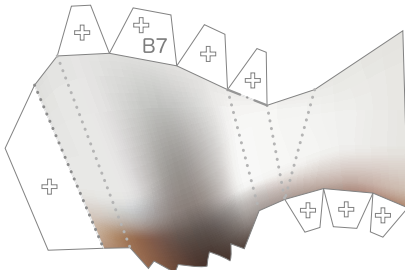
**B1 Left shoulder**



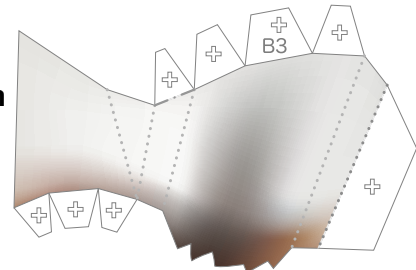
**B6 Right arm**



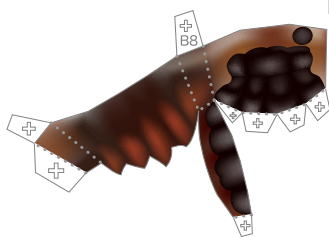
**B2 Left arm**



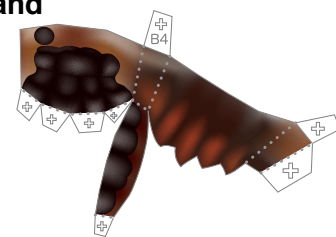
**B7 Right arm**



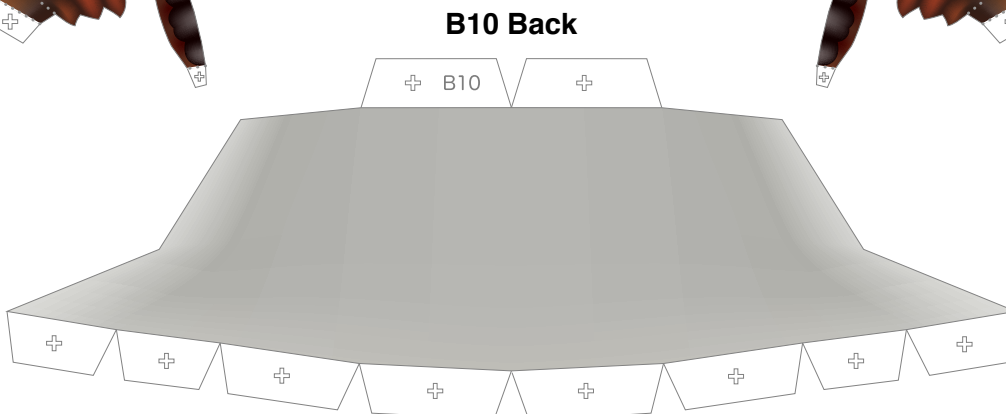
**B3 Left arm**



**B8 Right hand**



**B4 Left hand**



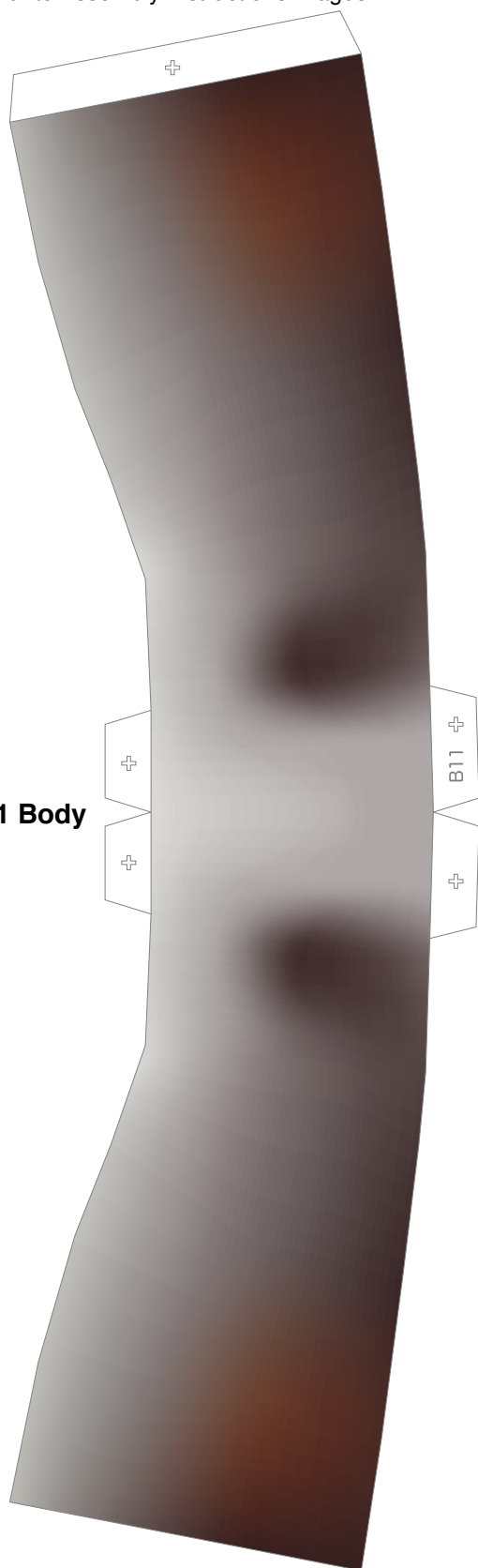
**B10 Back**



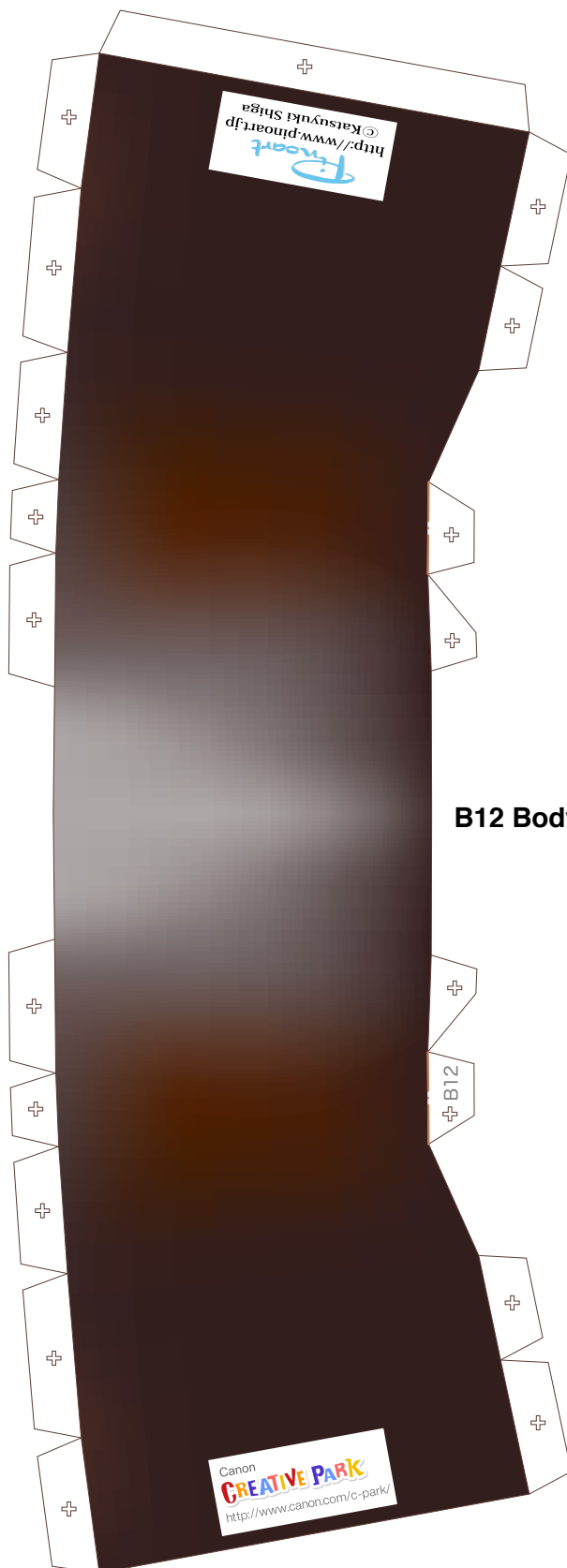
## Body parts

Refer to Assembly Instructions: Page3.

**B11 Body**



**B12 Body**

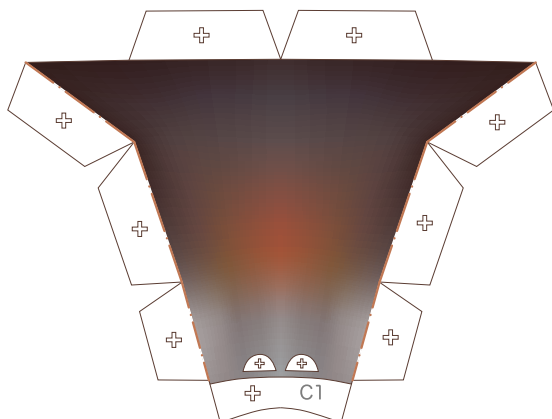




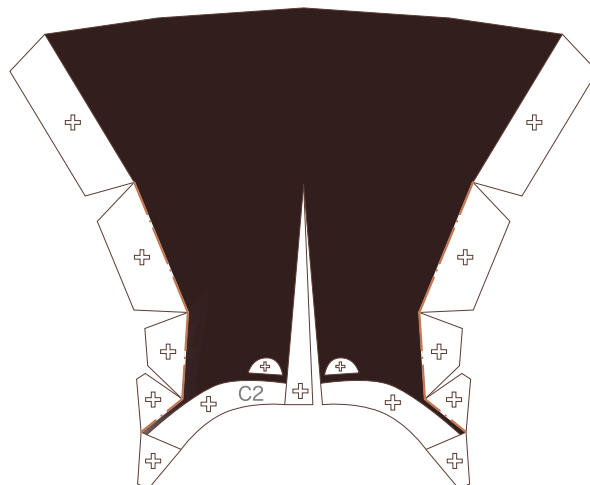
## Waist and leg parts

Refer to Assembly Instructions: Page3.

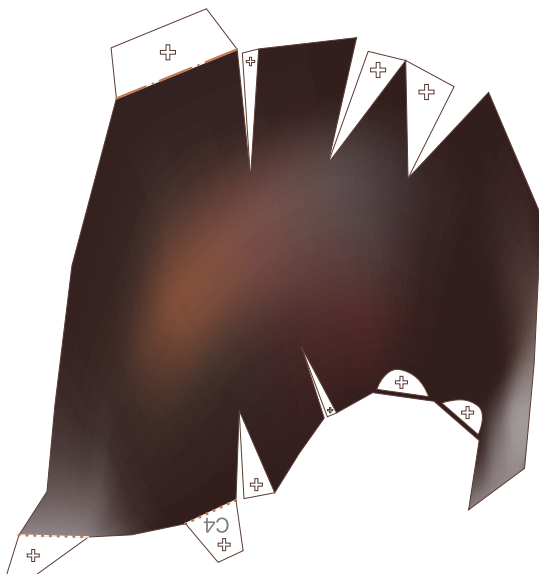
**C1 Belly**



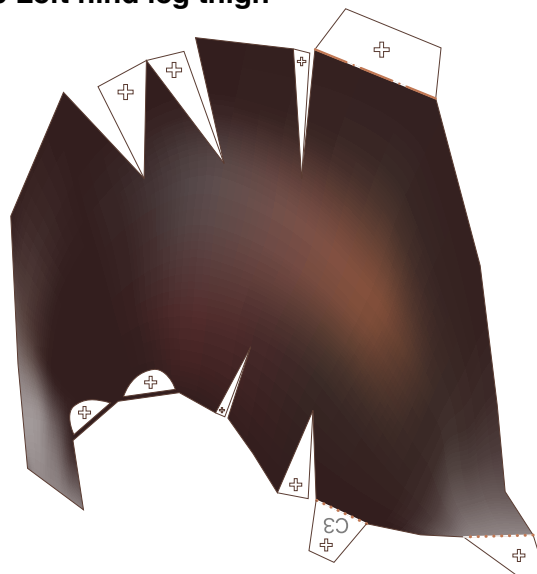
**C2 Waist**



**C4 Right hind leg thigh**



**C3 Left hind leg thigh**

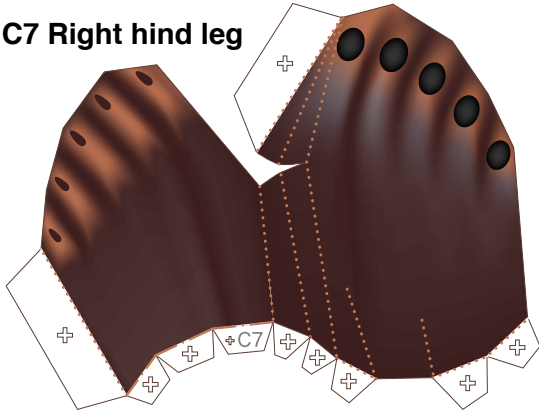




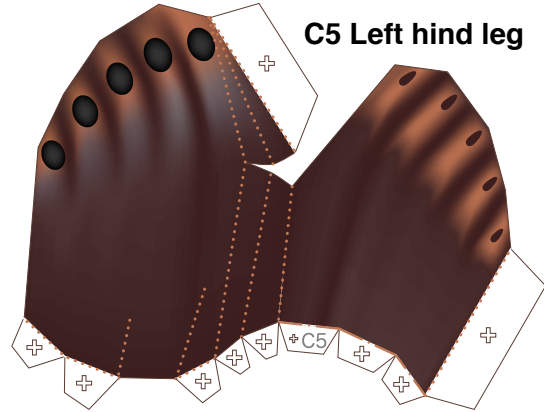
## Leg and tail parts

Refer to Assembly Instructions: Page3 / Page4.

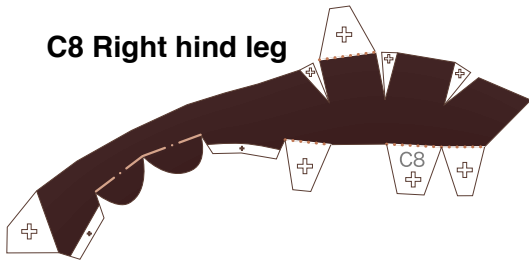
C7 Right hind leg



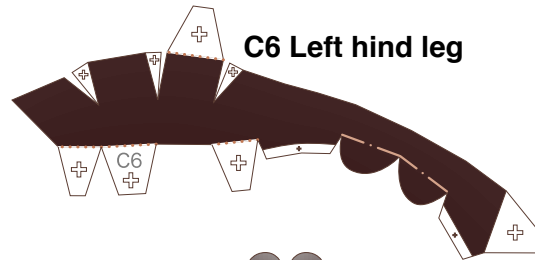
C5 Left hind leg



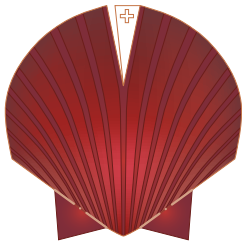
C8 Right hind leg



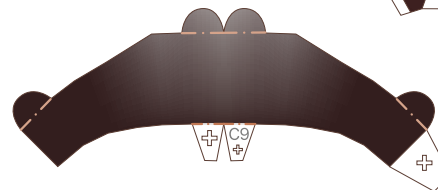
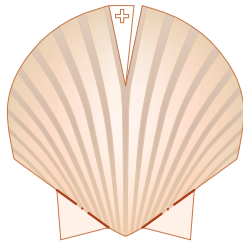
C6 Left hind leg



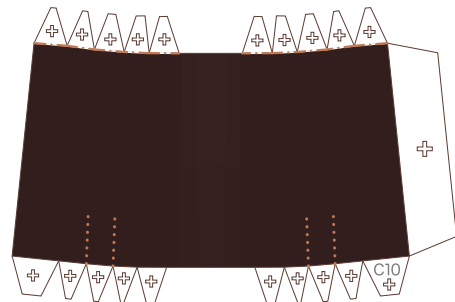
C13 Scallop shell



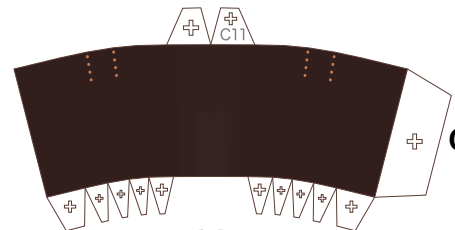
C14 Scallop shell



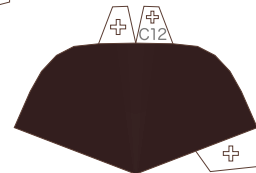
C9 Tail



C10 Tail

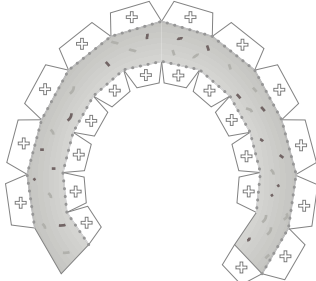


C11 Tail

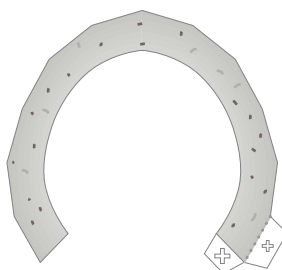


C12 Tail

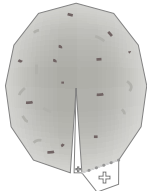
C16 Stone



C17 Stone



C15 Stone

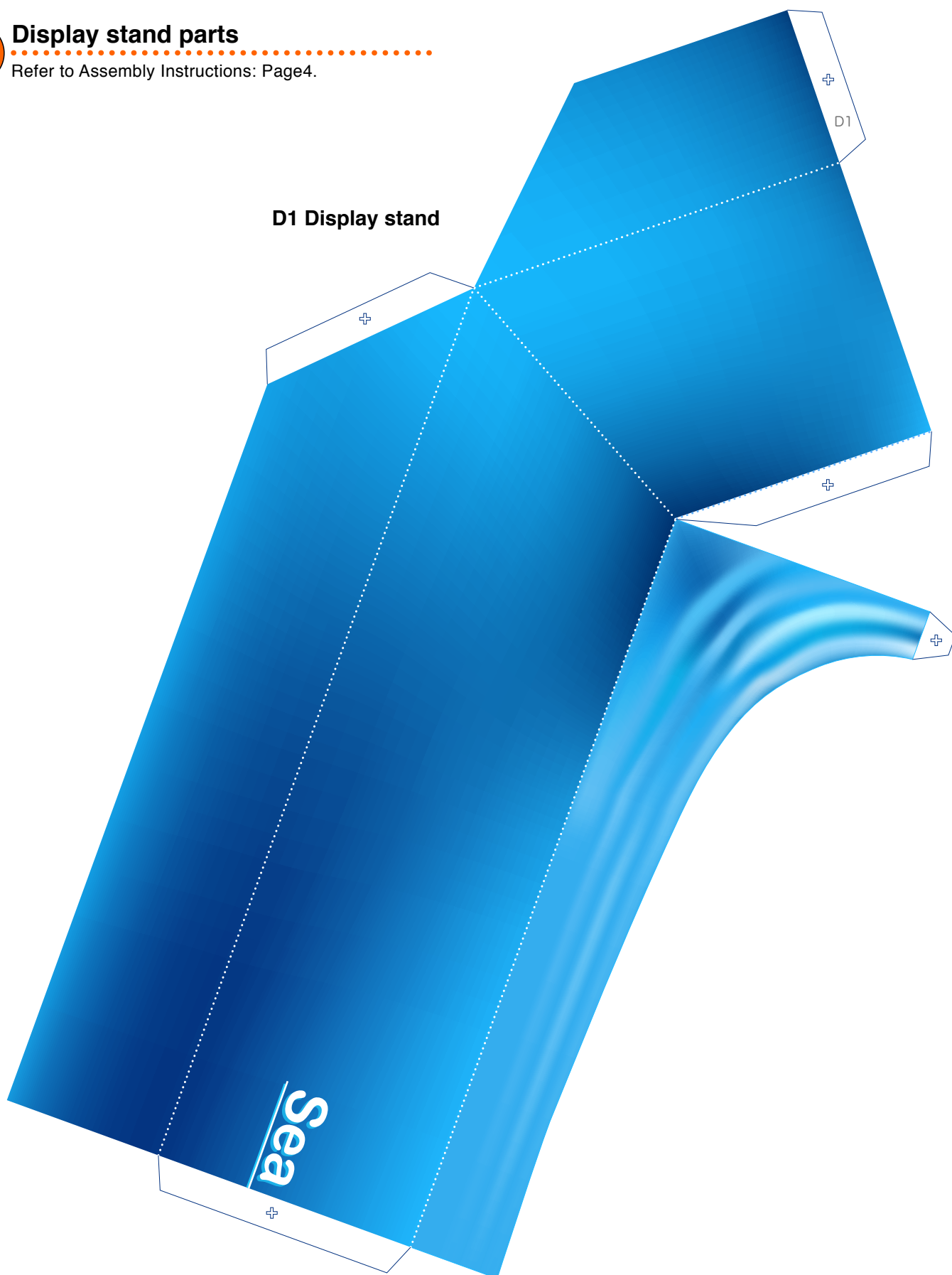




## Display stand parts

Refer to Assembly Instructions: Page4.

**D1 Display stand**



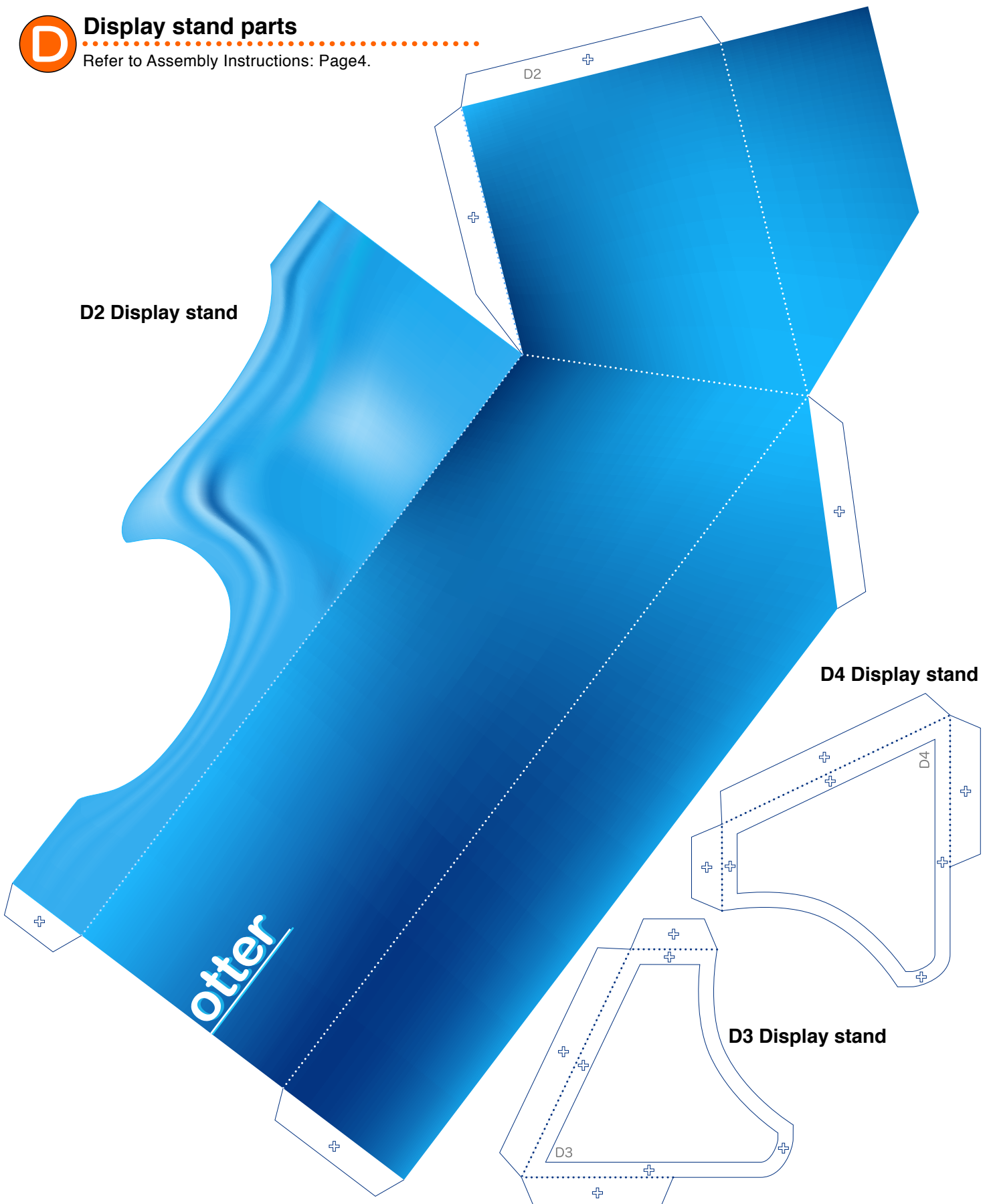




## Display stand parts

Refer to Assembly Instructions: Page4.

D2 Display stand



D4 Display stand

D3 Display stand

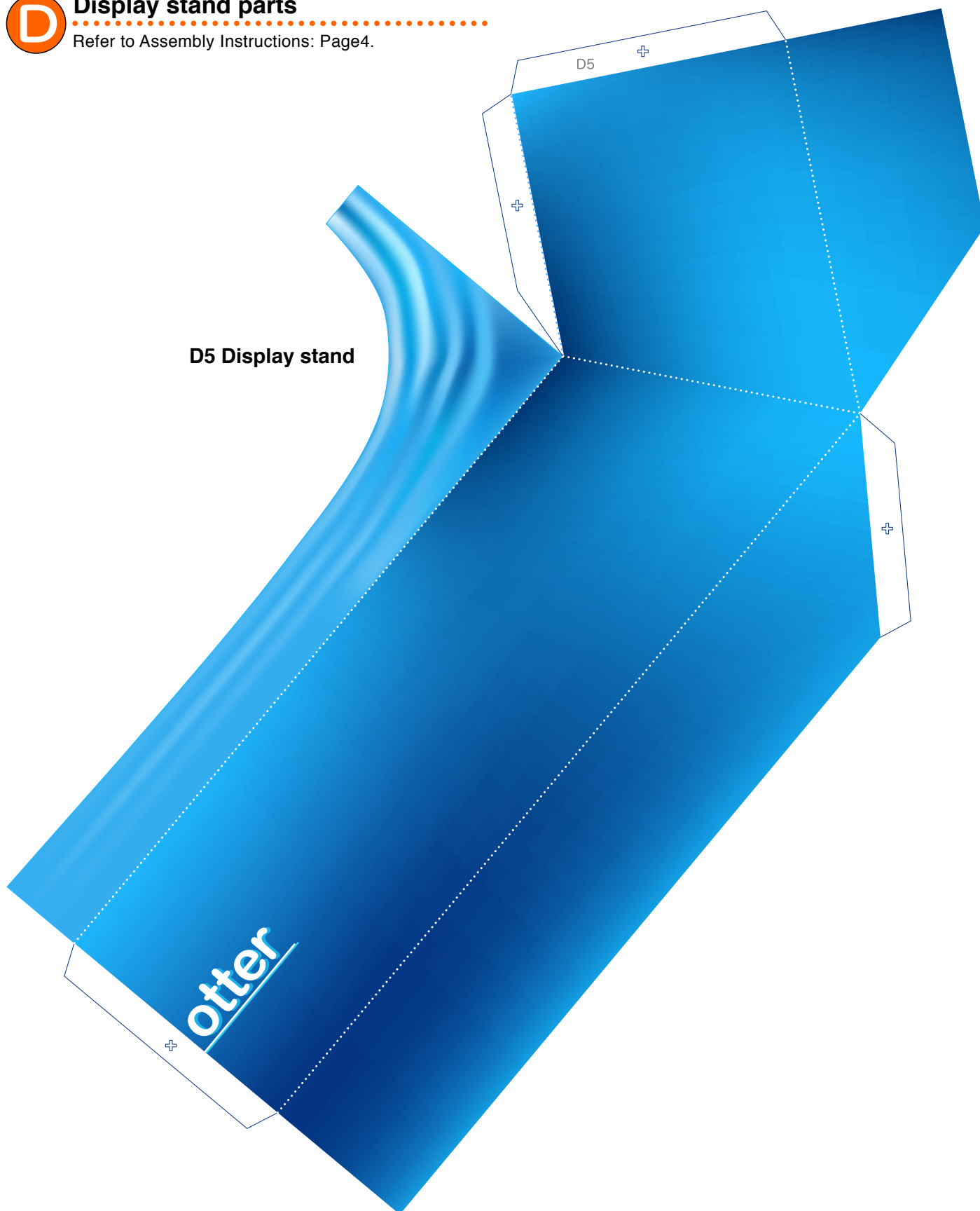




## Display stand parts

Refer to Assembly Instructions: Page4.

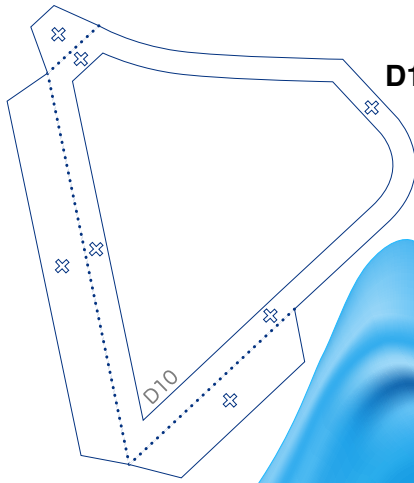
D5 Display stand





## Display stand parts

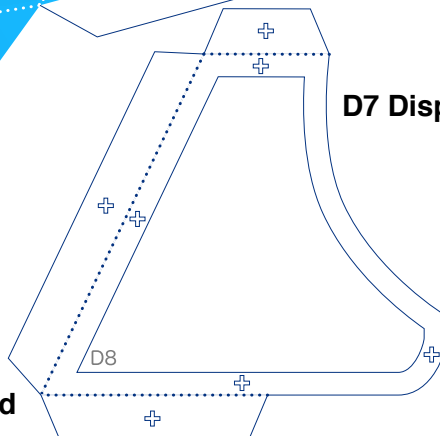
Refer to Assembly Instructions: Page4.



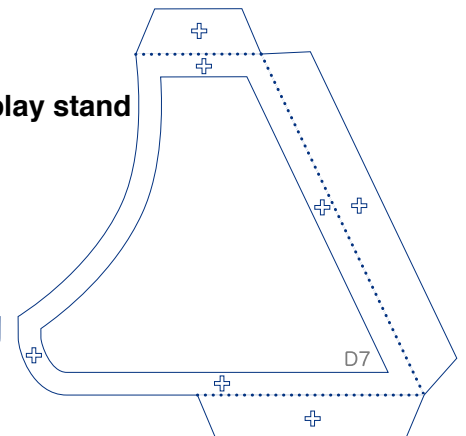
D10 Display stand



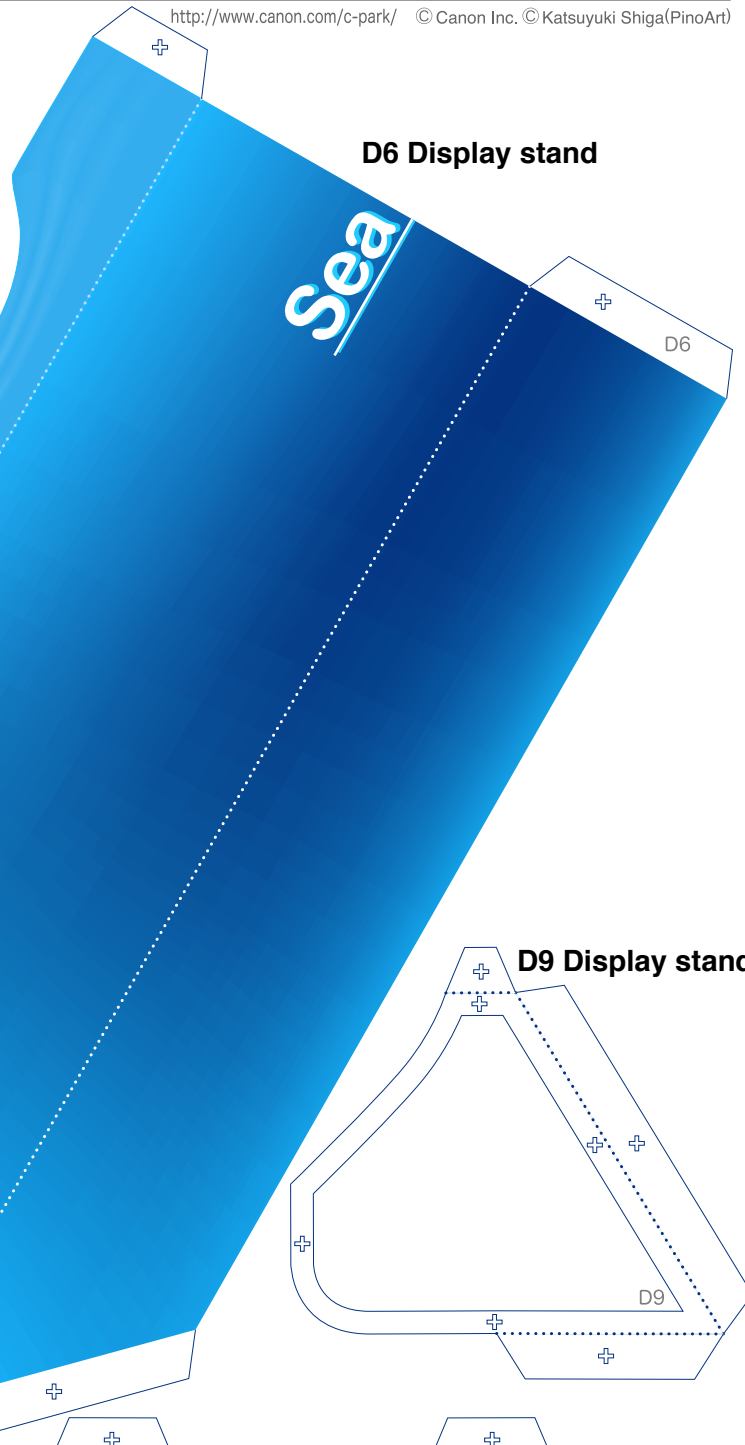
D8 Display stand



D7 Display stand



D6 Display stand



D9 Display stand

