

● Pot (Ivory)



● Pot (Navy)



● Pot (White)



Assembly Instructions

- 1 : Carefully cut out the parts.
- 2 : Fold along the dotted lines, making mountain or valley folds as indicated.
- 3 : Follow the order indicated in the instructional diagrams, and attach the parts to assemble.
- 4 : Assemble all the pieces together, and you're done!

Caution

- Keep glue away from small children.
- Be careful not to cut your fingers when using scissors.
- Be careful not to cut yourself on the edges of the paper.
- Keep the completed model away from sources of heat.

Tools

Scissors
Glue (We recommend craft glue.)
Ruler
A used ball-point pen

Assembly Tip

Trace along the folds with a ruler and a used pen (no ink) to get a sharper, easier fold.

Explanation of Symbols



Solid line : Scissors line



Mountain fold (dotted line) :
Make a mountain fold



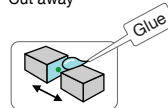
Red solid line : Cut in line



Valley fold
(dashed and dotted line) :
Make a valley fold



Cut away



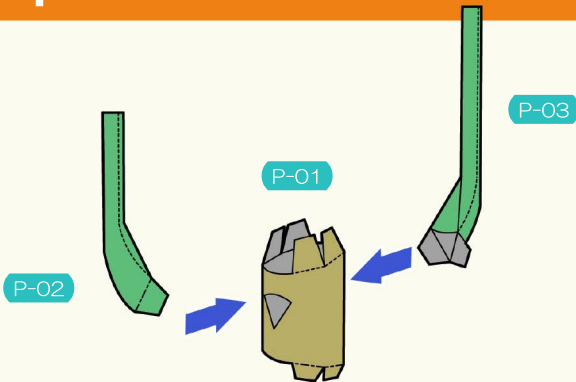
The glue spot (colored dot)
shows where to apply the glue.

● Glue spot (Green dot)
Glue within the same part.

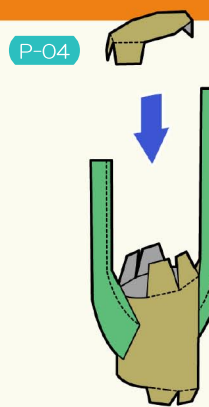
● Glue spot (Blue dot)
Glue to the rear of the other part.

● Glue spot (Red dot)
Put glue on the reverse side.

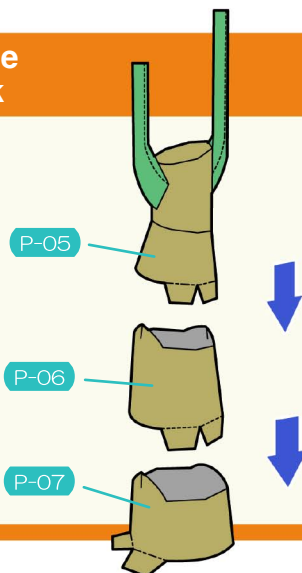
1 Attach the trunk and branches



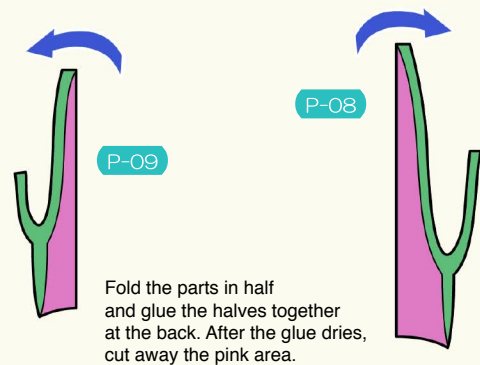
2



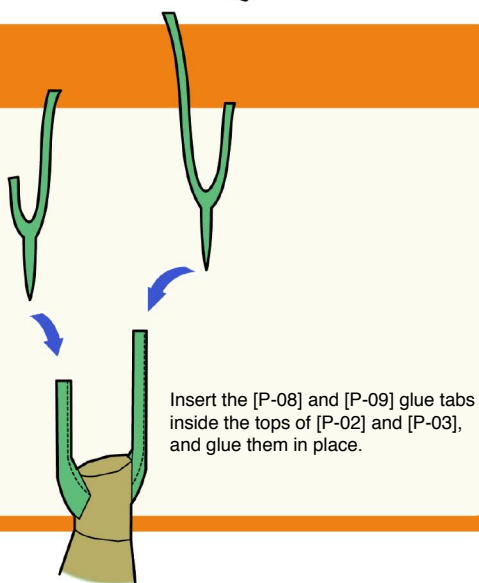
3 Assemble the trunk



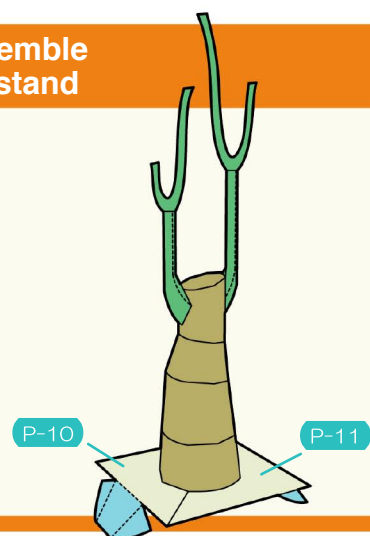
4 Assemble the branch tips



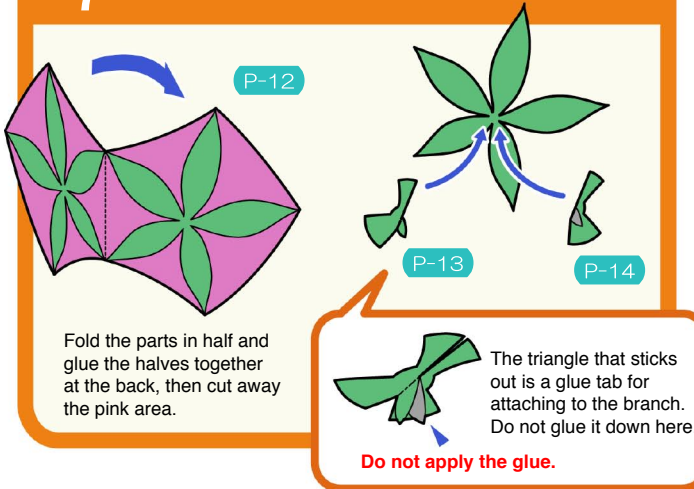
5



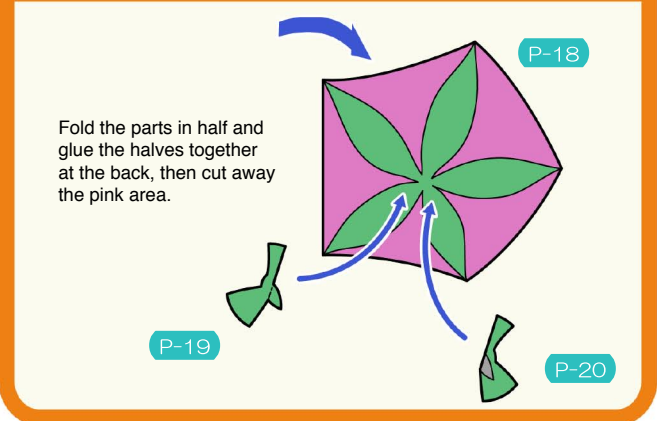
6 Assemble the stand



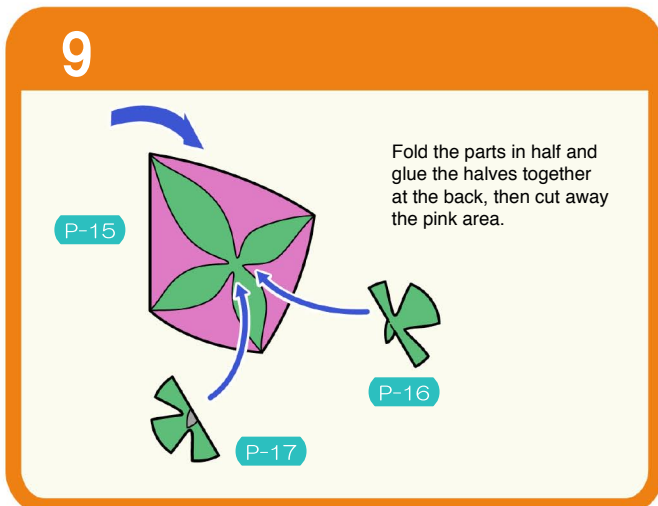
7 Assemble the leaves



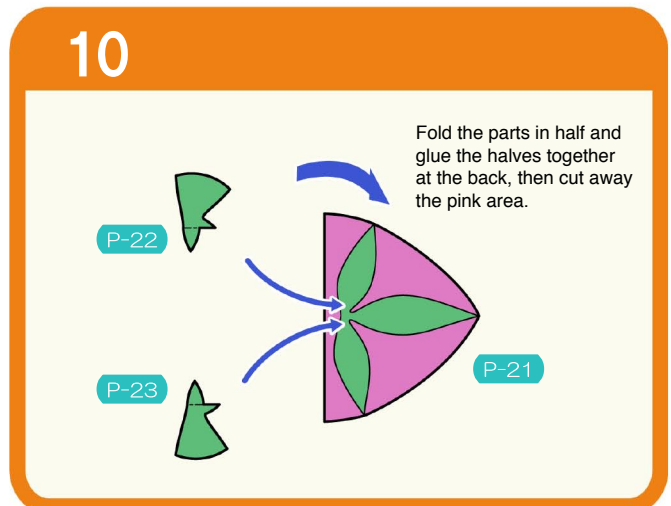
8



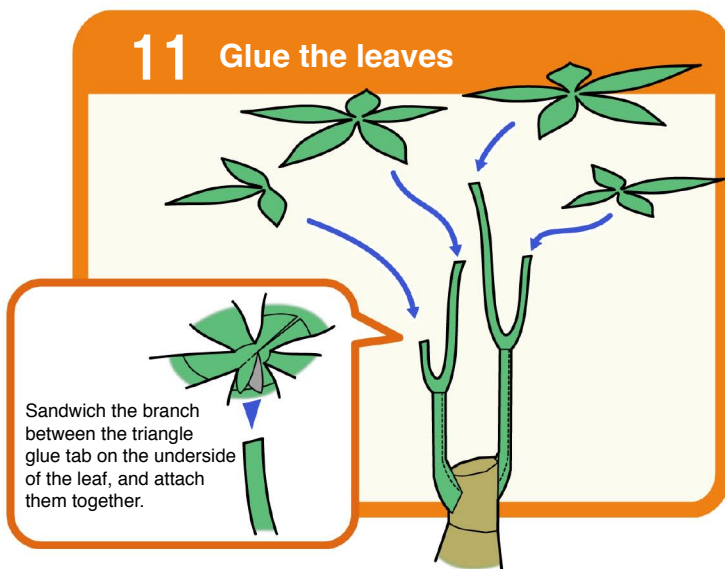
9



10

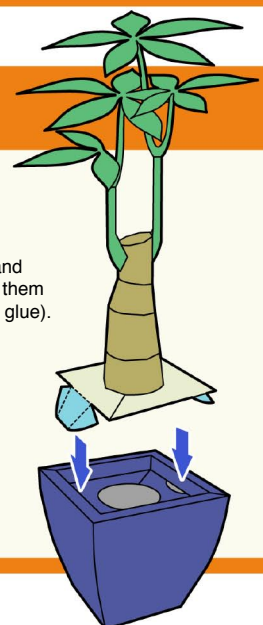


11 Glue the leaves



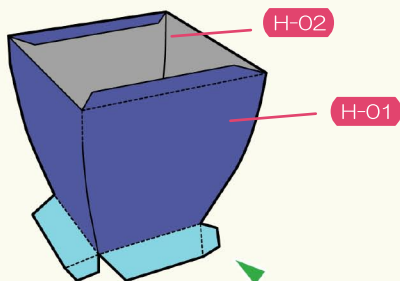
12 Complete

Get your pot (made separately) and attach the plant. Fold up the light blue parts of the stand (the "wings" at the sides), and insert them into the slits on the pot (do not apply glue). The wings will unfold inside, securing the plant in place.



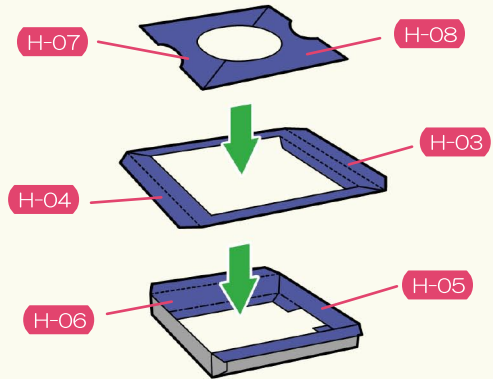
*We will use the navy pot as our model.

1 Assemble the side parts

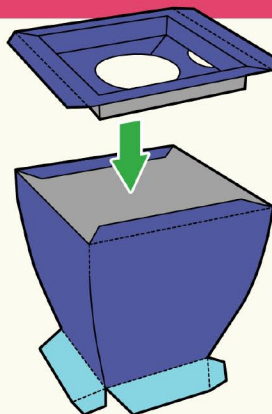


Do not put glue on the light blue area at the bottom yet.

2 Assemble the upper parts

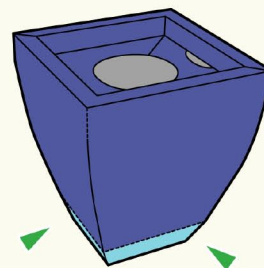


3



Attach the side parts and upper parts together.

4

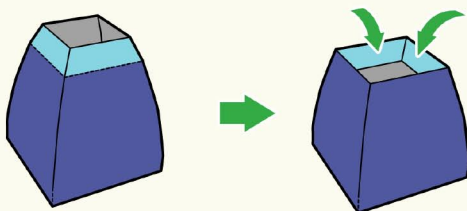


Glue down the light blue parts.

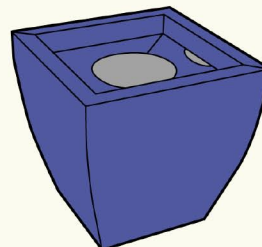
5

Turn the pot upside down.

Push the light blue parts inside with your finger.



6 Complete



Complete!