

● Pot (Ivory)



● Pot (Navy)



● Pot (White)



This file only contains parts for the ornamental plant itself.
Please download the file for the pot separately.

Assembly Instructions

- 1 : Carefully cut out the parts.
- 2 : Fold along the dotted lines, making mountain or valley folds as indicated.
- 3 : Follow the order indicated in the instructional diagrams, and attach the parts to assemble.
- 4 : Assemble all the pieces together, and you're done!

Caution

- Keep glue away from small children.
- Be careful not to cut your fingers when using scissors.
- Be careful not to cut yourself on the edges of the paper.
- Keep the completed model away from sources of heat.

Tools

Scissors
Glue (We recommend craft glue.)
Ruler
A used ball-point pen

Assembly Tip

Trace along the folds with a ruler and a used pen (no ink) to get a sharper, easier fold.

Explanation of Symbols



Solid line : Scissors line



Mountain fold (dotted line) :
Make a mountain fold



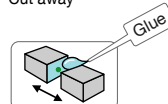
Red solid line : Cut in line



Valley fold
(dashed and dotted line) :
Make a valley fold



Cut away

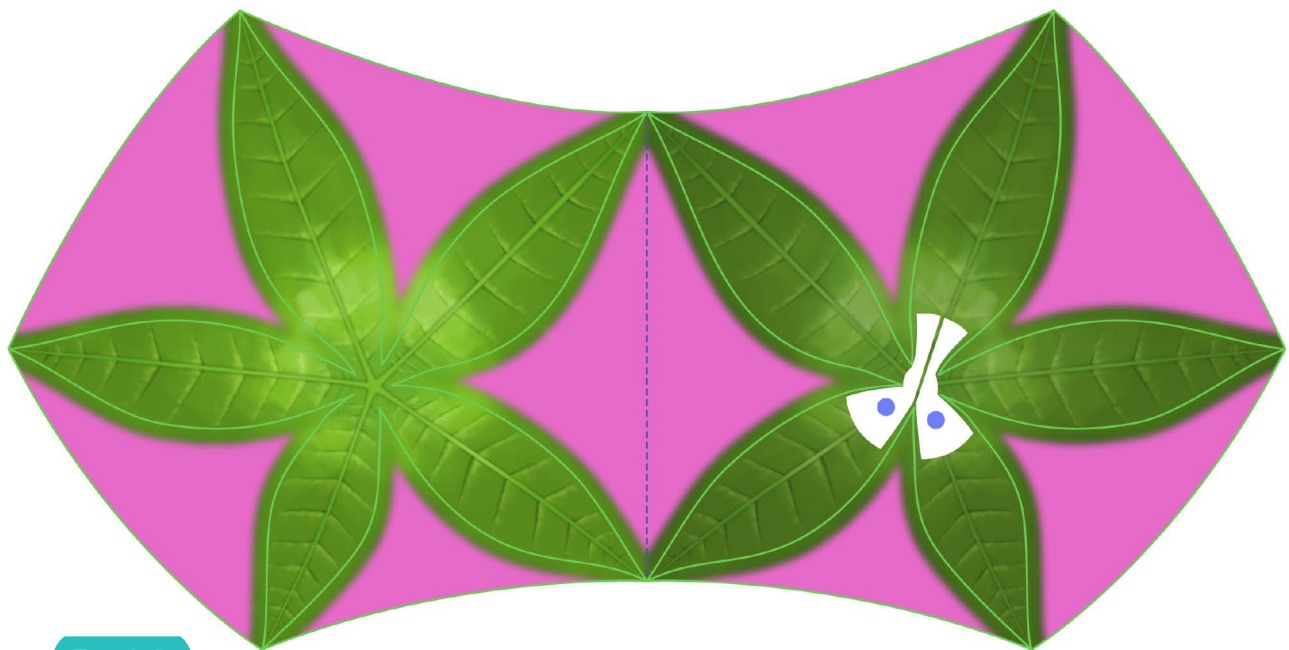


The glue spot (colored dot)
shows where to apply the glue.

● Glue spot (Green dot)
Glue within the same part.

● Glue spot (Blue dot)
Glue to the rear of the other part.

● Glue spot (Red dot)
Put glue on the reverse side.

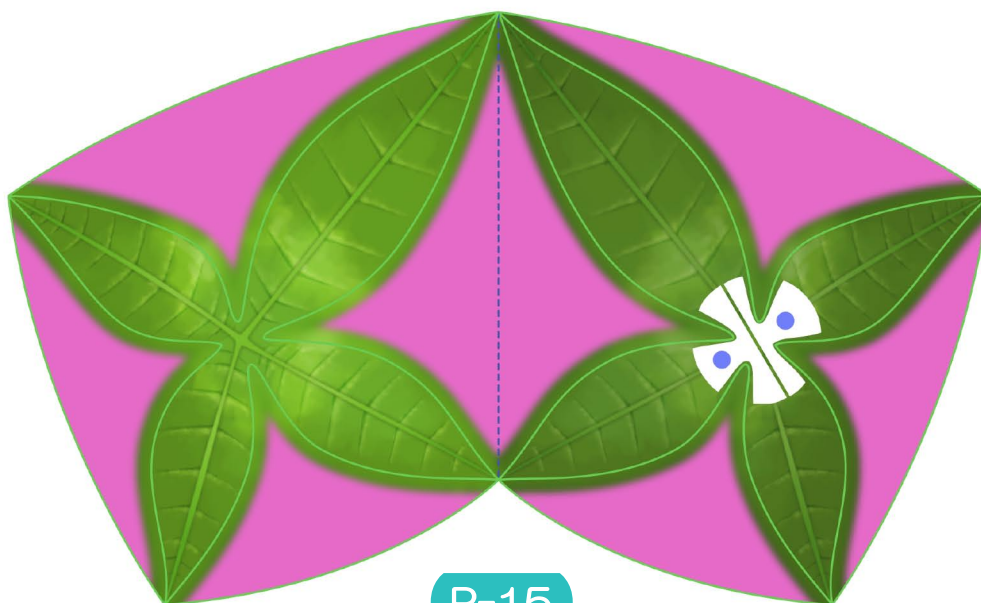


P-18

P-19



P-20

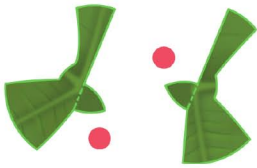
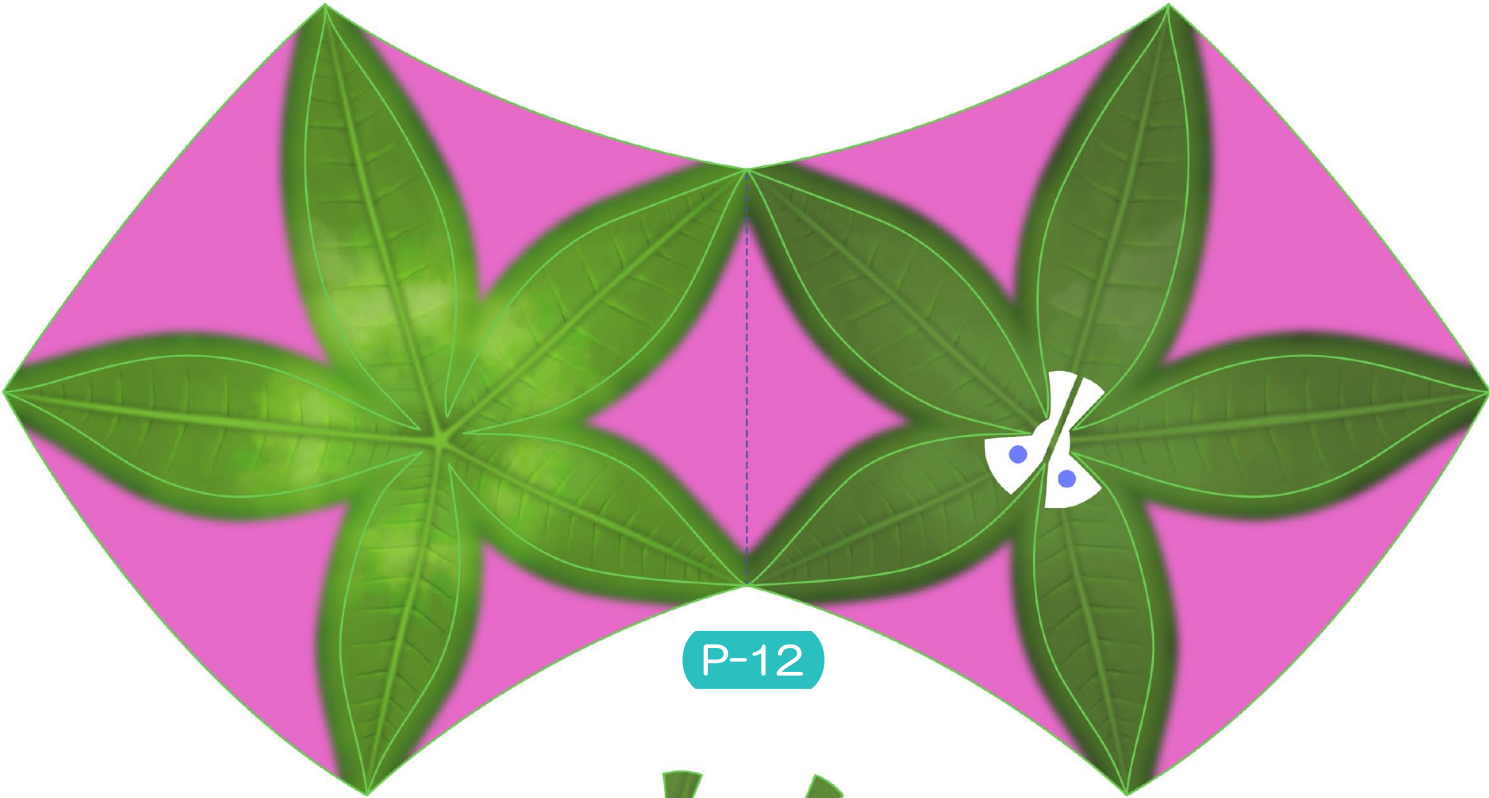
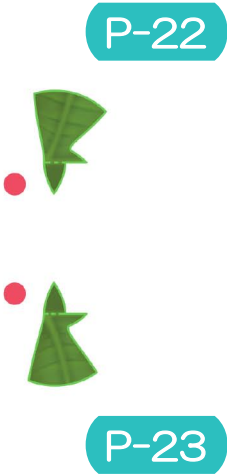
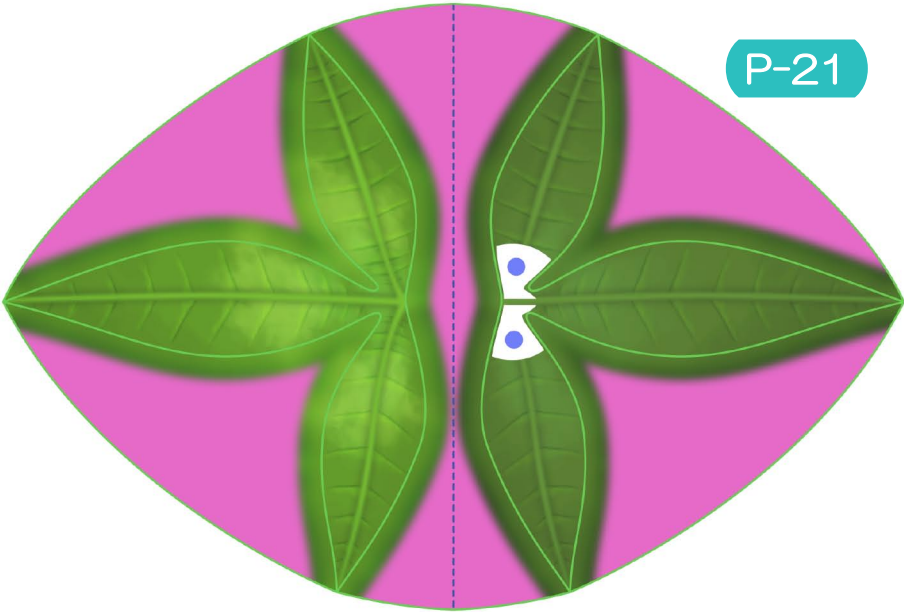


P-15

P-16

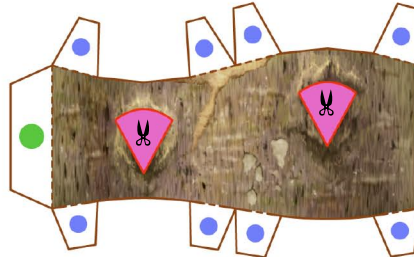


P-17

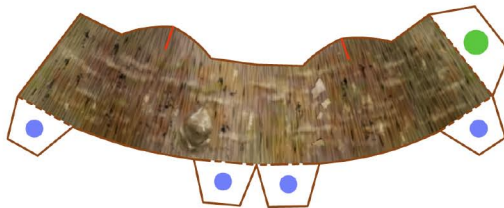




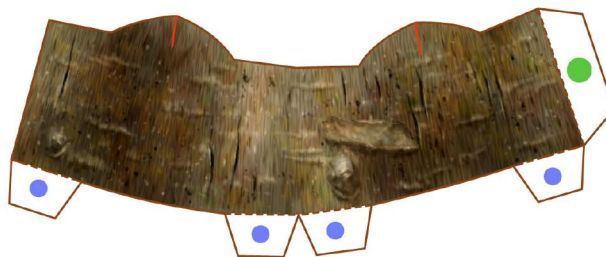
P-04



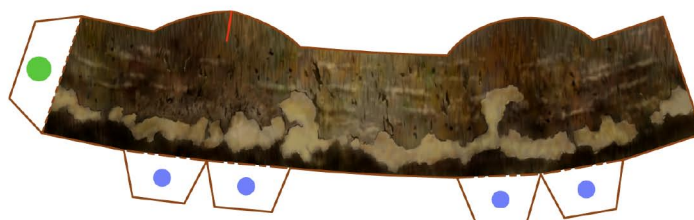
P-01



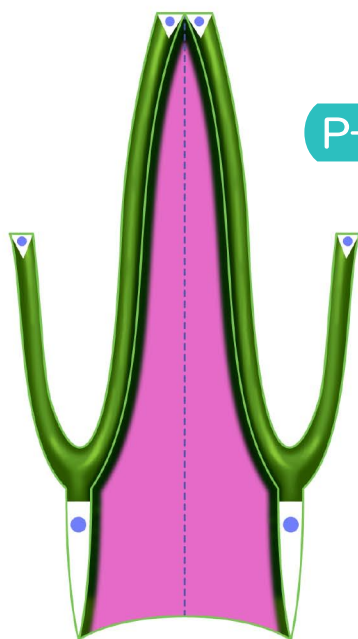
P-05



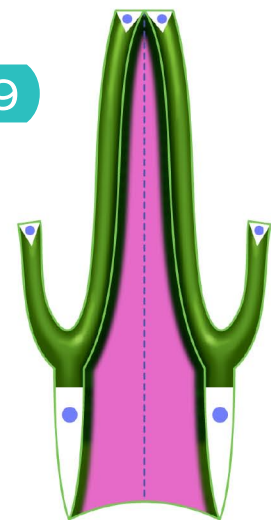
P-06



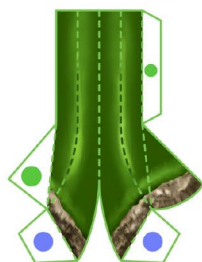
P-07



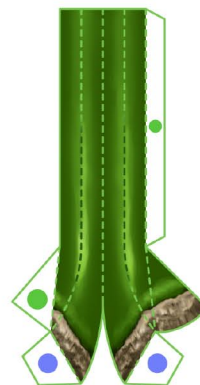
P-08



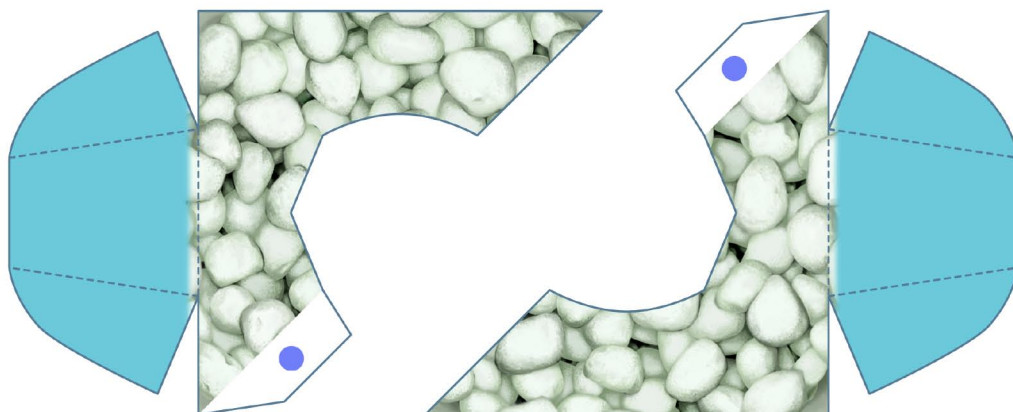
P-09



P-02



P-03



P-10

P-11