

CREATIVE PARK

<http://www.canon.com/c-park/>

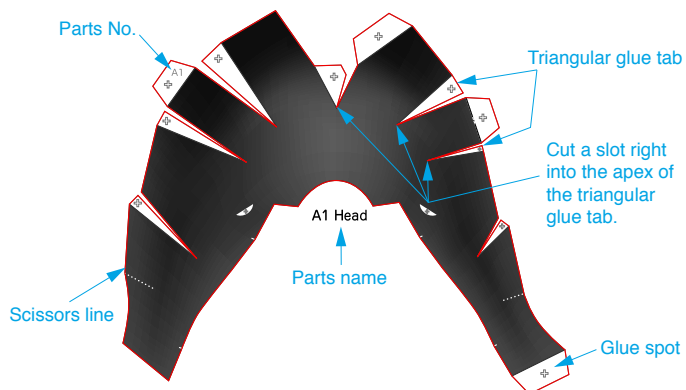
Mountain Gorilla



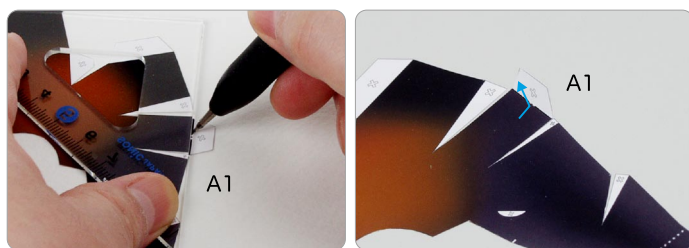
A Assemble the head

Use pattern: Page2.

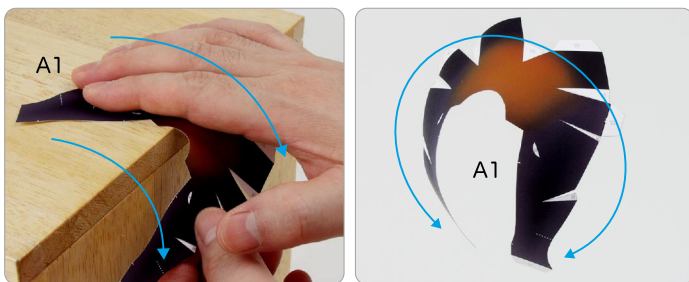
- ① Cut out A1 by cutting along the lines.
- ★ Cut along the line marked .



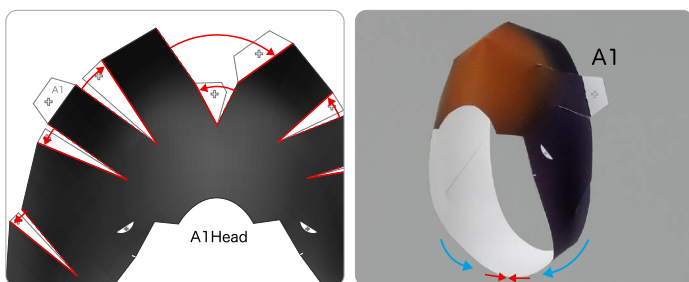
- ② Make a mountain fold and valley fold on A1.
- ★ Trace along the mountain fold line and valley fold line with a stencil pen, scoring it to make it easier to fold.



- ③ The parts will be easier to assemble if curled.
- ★ Using the photo as a guide, apply pressure with the palm of your hand, gradually curling the paper in the direction of the arrow.



- ④ Add a slight curl to A1 when attaching it.
- ★ Attach the triangular glue tabs so that the front side becomes convex.
- ★ Using the photo as a guide, attach in the direction of the arrow.



Tools	Notation Key
Scissors	Scissors line
Paste, or woodwork glue	Mountain fold
Stencil pen, or bodkin	Valley fold
Ruler	Glue spot
	A1, B1 Parts No.

◆ The Assembly instructions are divided into three blocks: A (head), B (arms, body, and thigh), and C (hands and legs). Follow the instructions for each block to assemble your mountain gorilla.

◆ ★ mark is a basic assembly technique that remains the same regardless of the part. Instructions are printed only for the first instance.

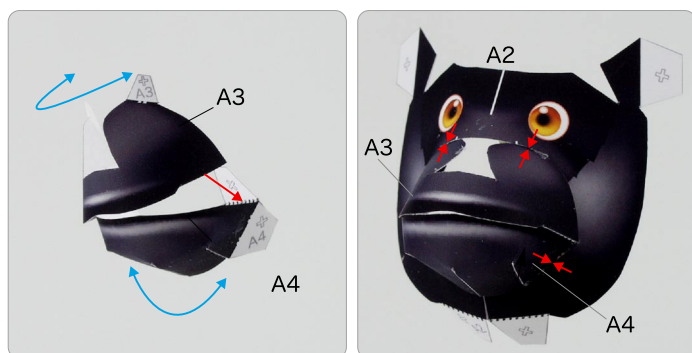
<Caution>

- ✂ Keep scissors and glue away from small children.
- ✂ Be careful not to cut your fingers when using scissors.

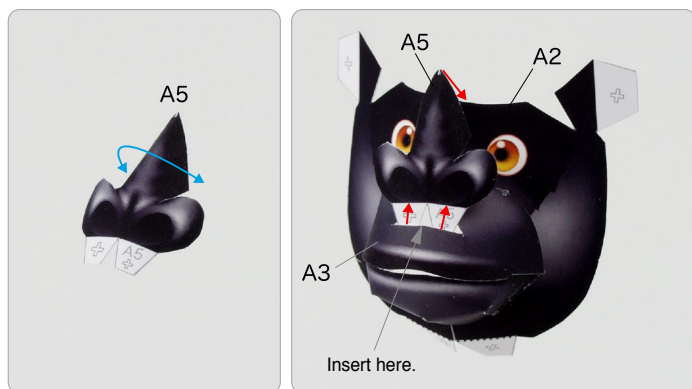
5 Assemble A2.



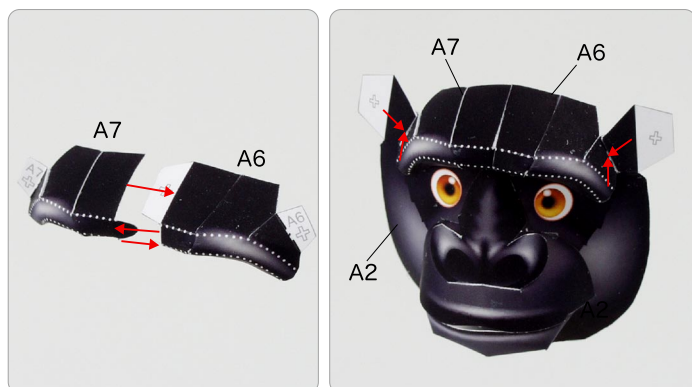
6 Attach A3 and A4, and attach them to A2.



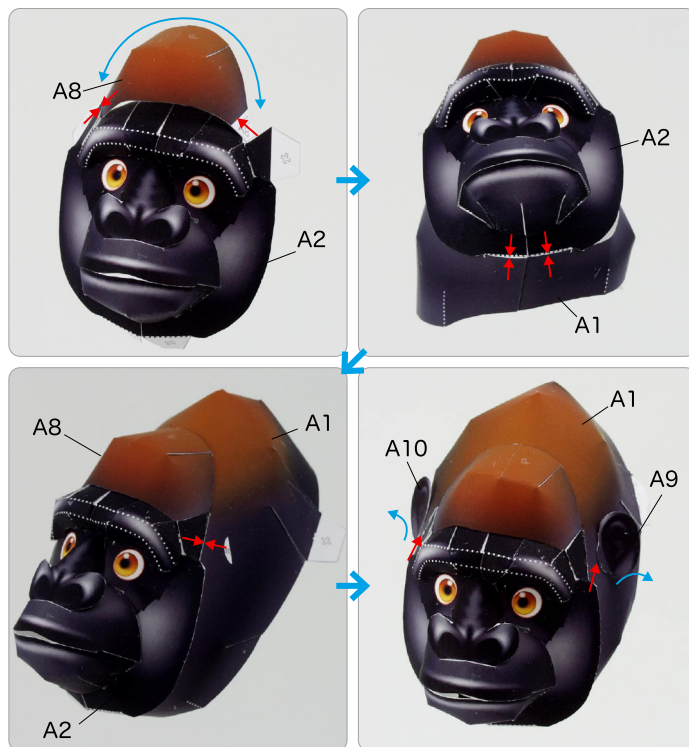
7 Curl A5 and add it to the face.



8 Attach A6 and A7, and attach them to the face.

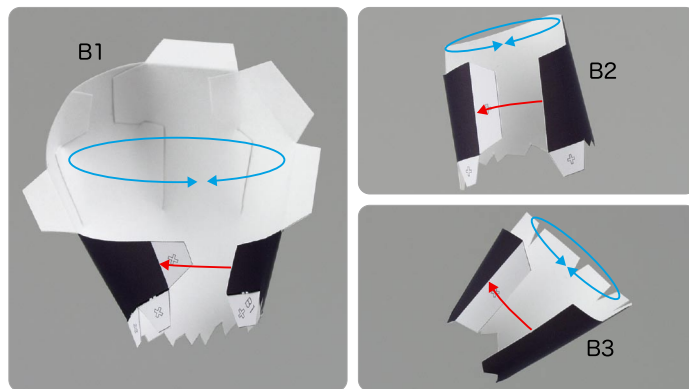


9 Attach A8 to the face, and attach them to A1. Attach A9 and A10, and the head is complete.

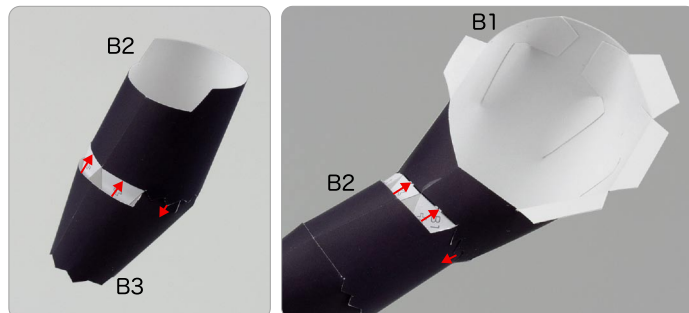


B Assemble the arms, the body and the thigh
Use pattern: Page3 to Page5.

1 Assemble B1, B2 and B3.



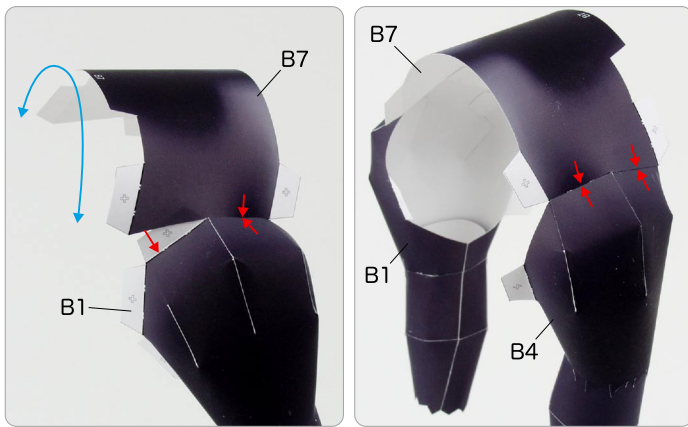
2 Attach B2 and B3, and attach them to B1.



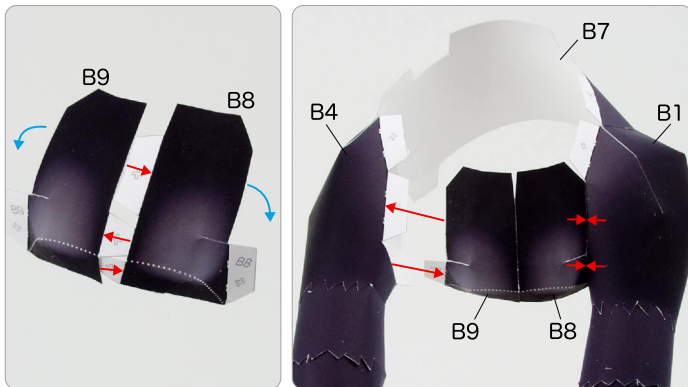
③ In the same way, attach B4, B5 and B6.



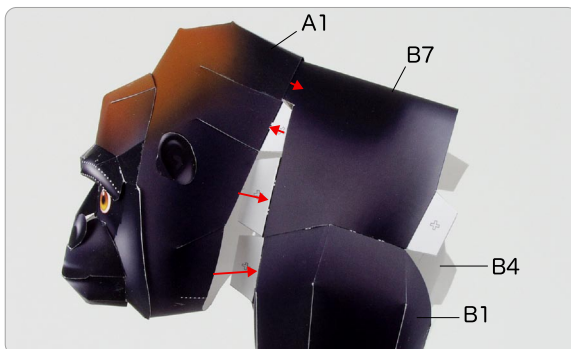
④ Attach the left arm and the right arm to B7.



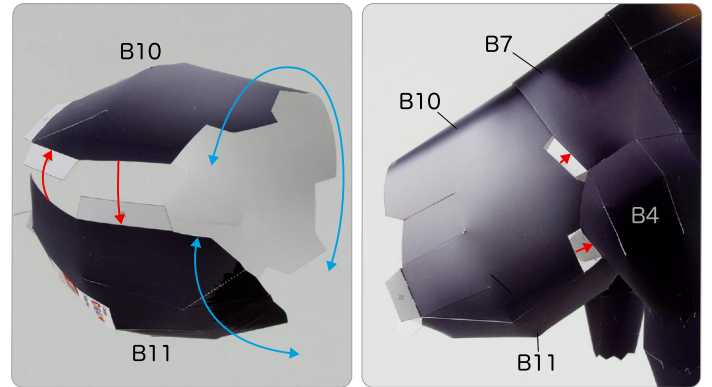
⑤ Attach B8 and B9, and attach them to the arms.



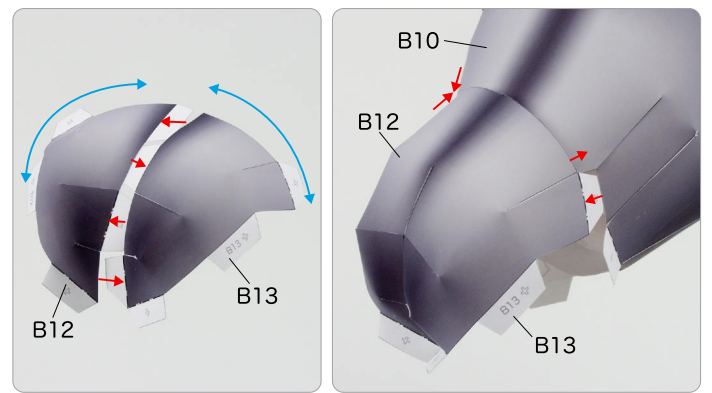
⑥ Attach the head and the arms.



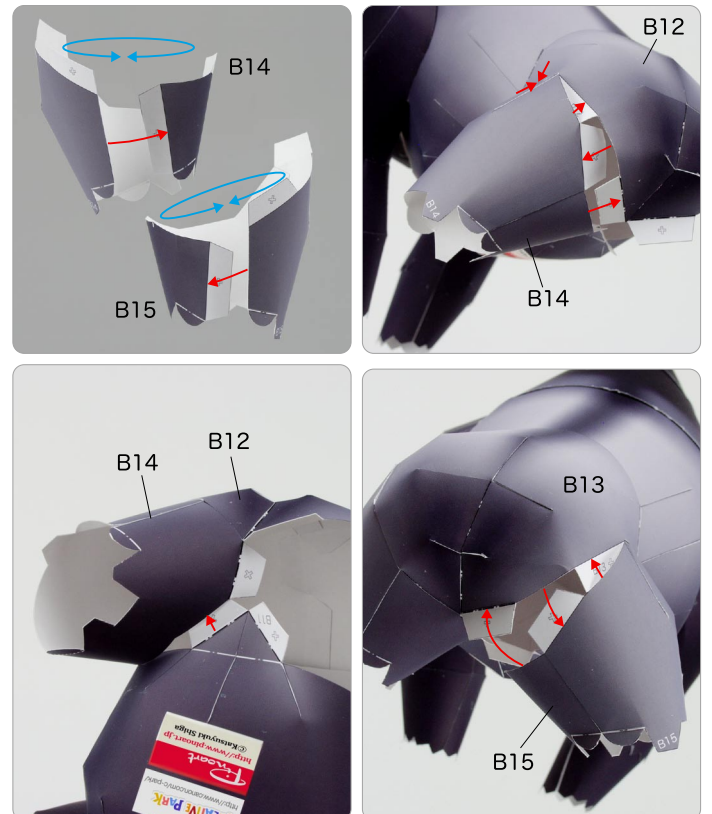
⑦ Assemble B10 and B11, and attach them to the arms.



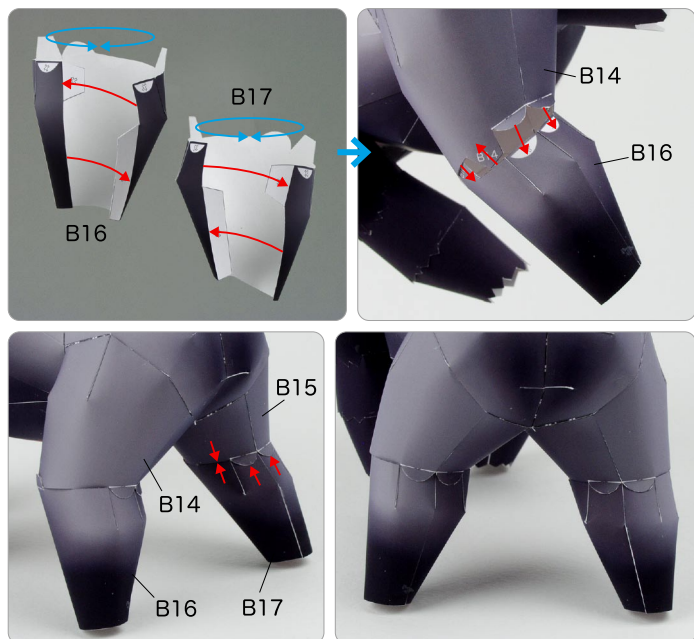
⑧ Assemble B12 and B13, and attach them to the body .



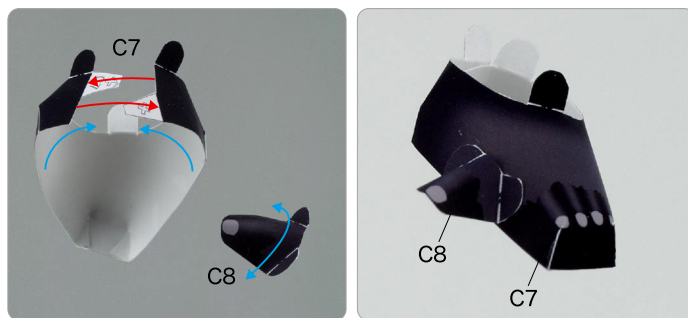
⑨ Assemble B14 and B15, and attach them to the body .



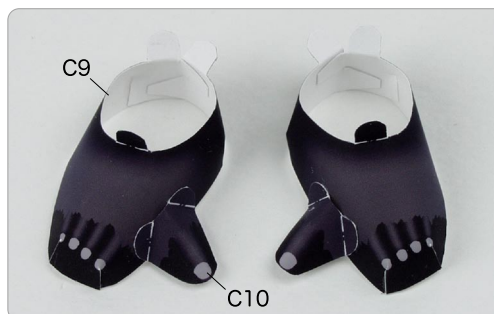
10 Assemble B16 and B17, and attach them to the body to complete the body.



3 Assemble C7 and C8, and attach them.



4 In the same way, attach C9 and C10.



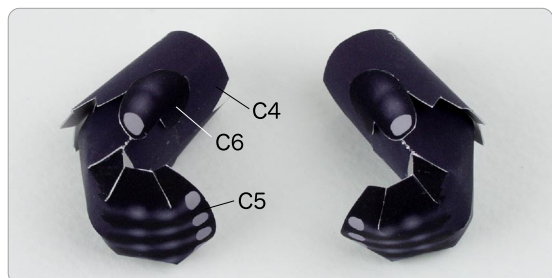
C Assemble the hands and the legs

Use pattern: Page6.

1 Assemble C1, C2 and C3, and attach them.



2 In the same way, assemble C4, C5 and C6.



5 Ensure that all four hands and feet touch the ground before adding glue to the parts. Once you have glued them, your mountain gorilla is complete!

