

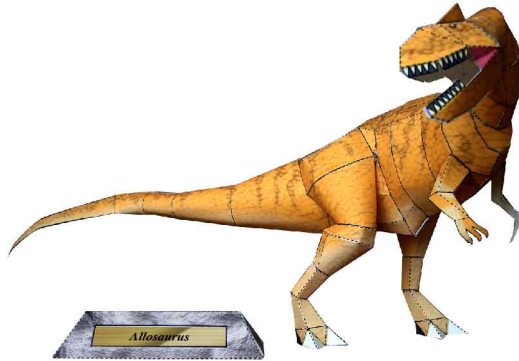
# Allosaurus : Assembly Instructions

© Canon Inc. © Y. Watanabe



## PAPER CRAFT

<http://www.canon.com/c-park/en/>

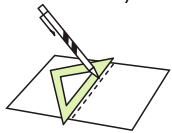


View of completed model

\*This model was designed for Papercraft and may differ from the original in some respects.

### Assembly Instructions : Five A4 sheets (No. 1 to No. 5)

\*Build the model by carefully reading the Assembly Instructions, in the parts sheet page order.



\*Hint: Trace along the folds with a ruler and an exhausted pen (no ink) to get a sharper, easier fold.

### Assembly Instructions



**Mountain fold(dotted line)**  
Make a mountain fold.



**Valley fold(dashed and dotted line)**  
Make a valley fold.



**Scissors line(solid line)**  
Cut along the line.



**Cut in line(solid line)**  
Cut along the line.



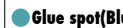
**Glue**  
The glue spot(colored dot) shows where to apply the glue.



**Glue spot(Red dot)**  
Glue parts with the same number together.



**Glue spot(Green dot)**  
Glue within the same part.



**Glue spot(Blue dot)**  
Glue to the rear of the other part.

#### Tools and materials



Scissors, set square, glue(We recommend stick glue), pencil, used ballpoint pen, toothpicks, tweezers, (useful for handling small parts)

#### Assembly tip



Before gluing, crease the paper along mountain fold and valley fold lines and make sure rounded sections are nice and stiff.

#### Caution



Glue, scissors and other tools may be dangerous to young children so be sure to keep them out of the reach of young children.

Before starting assembly: Writing the number of each section on its back side before cutting out the sections is highly recommended.  
(\* This way, you can be sure which section is which even after cutting out the sections.)

→ Indicates where sections should be glued together.

**Assembling the tail : Parts 1 - 4**

Glue each part into a tubular shape and attach the parts to each other in part-number order, from 1 through 4.

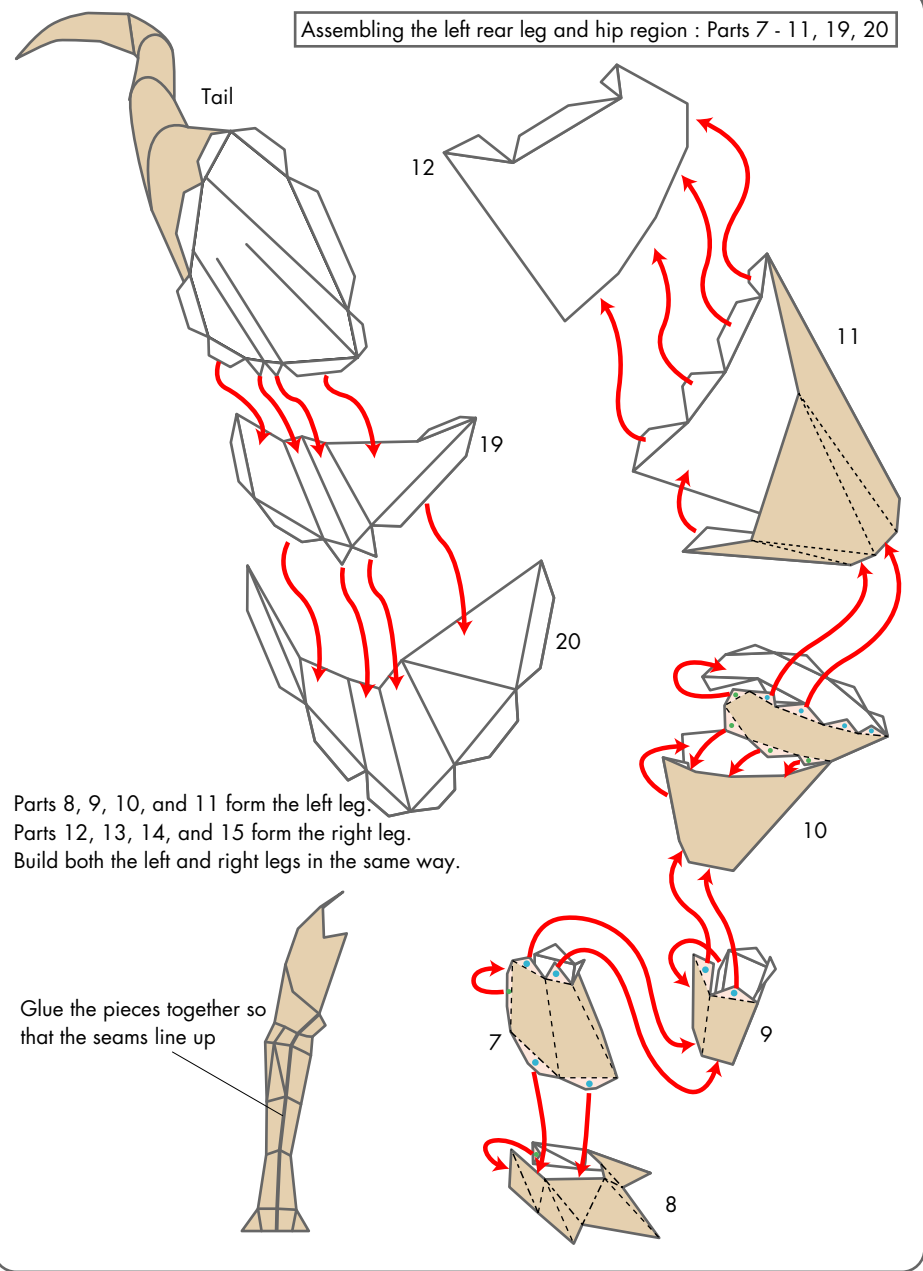
Glue the reverse sides of these parts together

Assembled parts 1 - 3

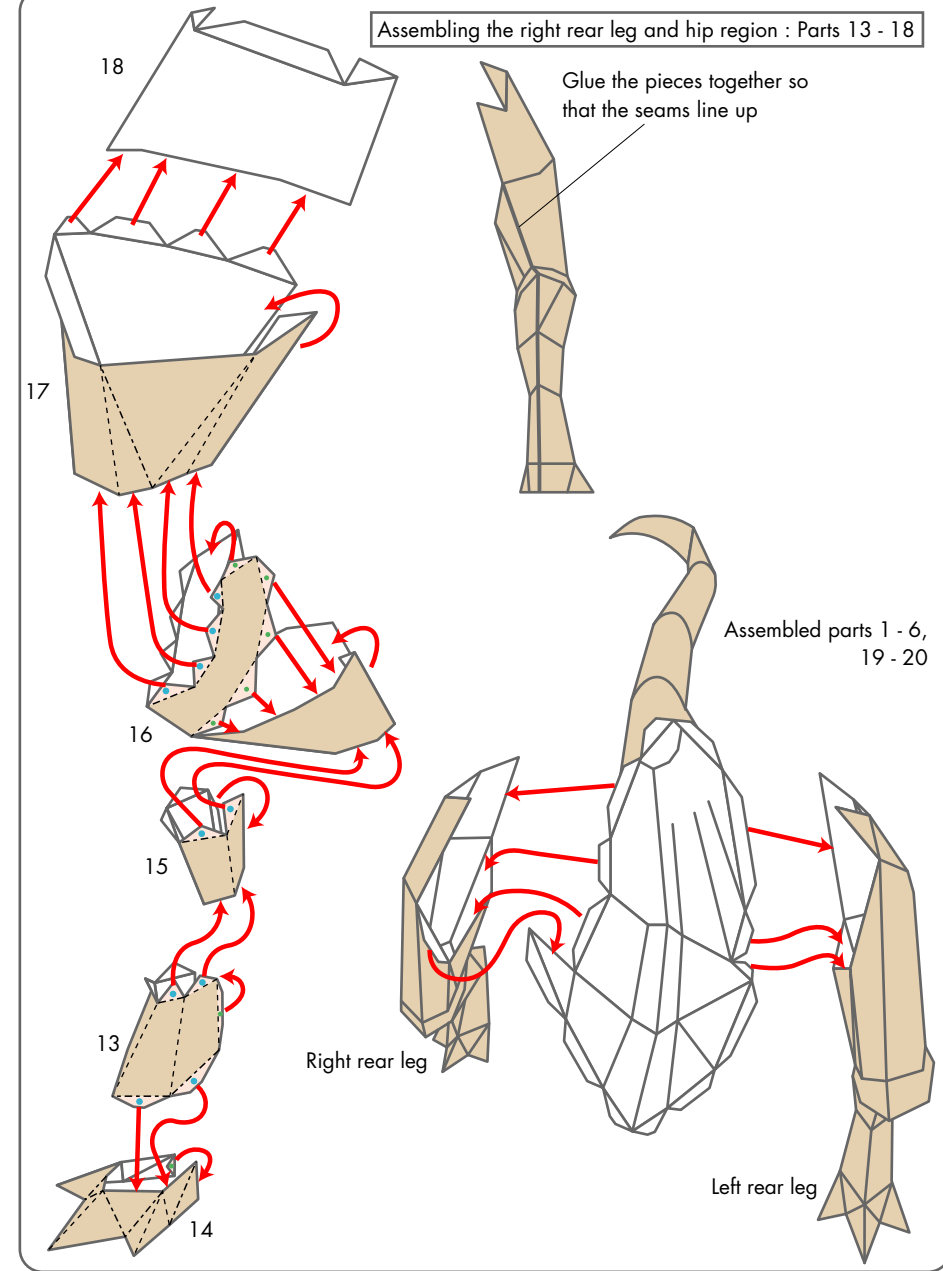
Glue the pieces together so that the seams line up

# Allosaurus : Assembly Instructions

Assembling the left rear leg and hip region : Parts 7 - 11, 19, 20

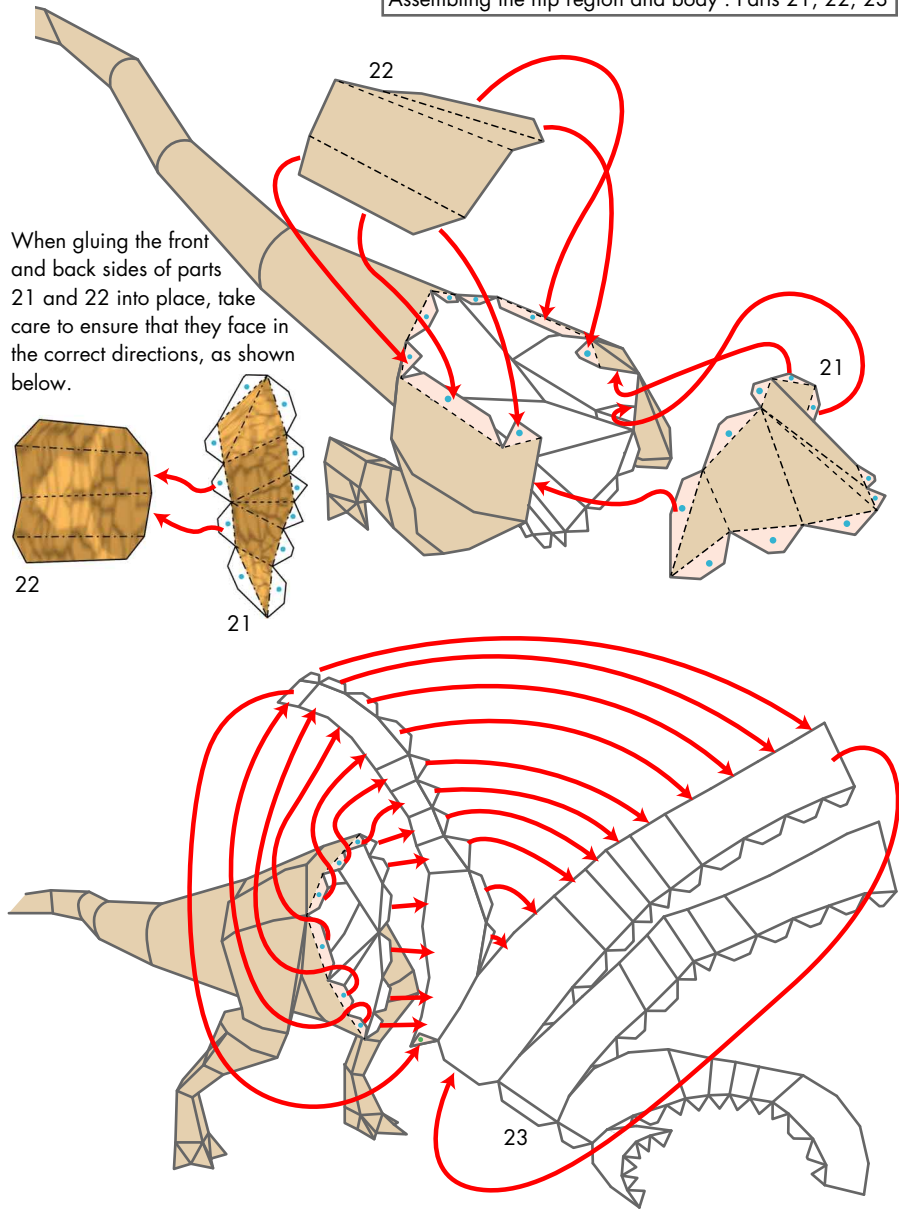


Assembling the right rear leg and hip region : Parts 13 - 18

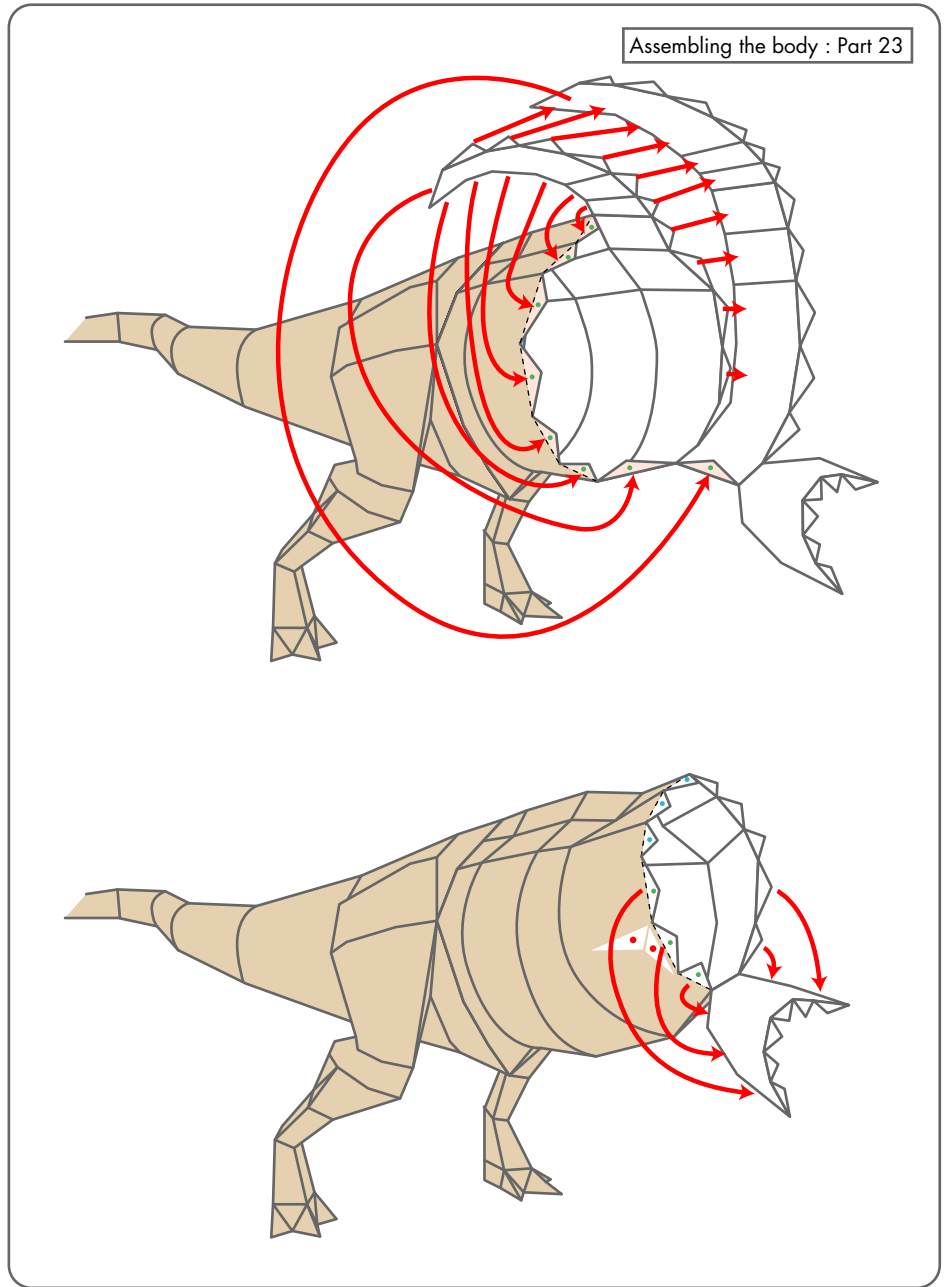


Assembling the hip region and body : Parts 21, 22, 23

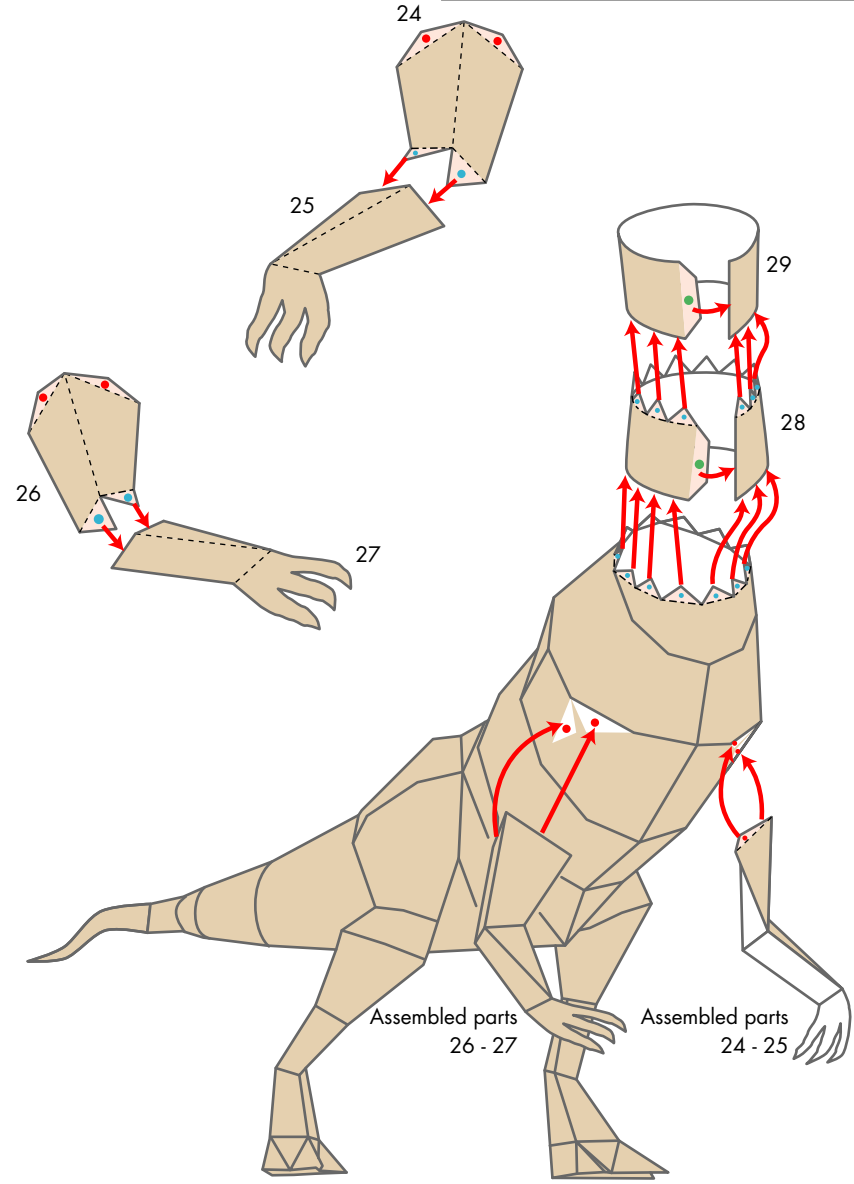
When gluing the front and back sides of parts 21 and 22 into place, take care to ensure that they face in the correct directions, as shown below.



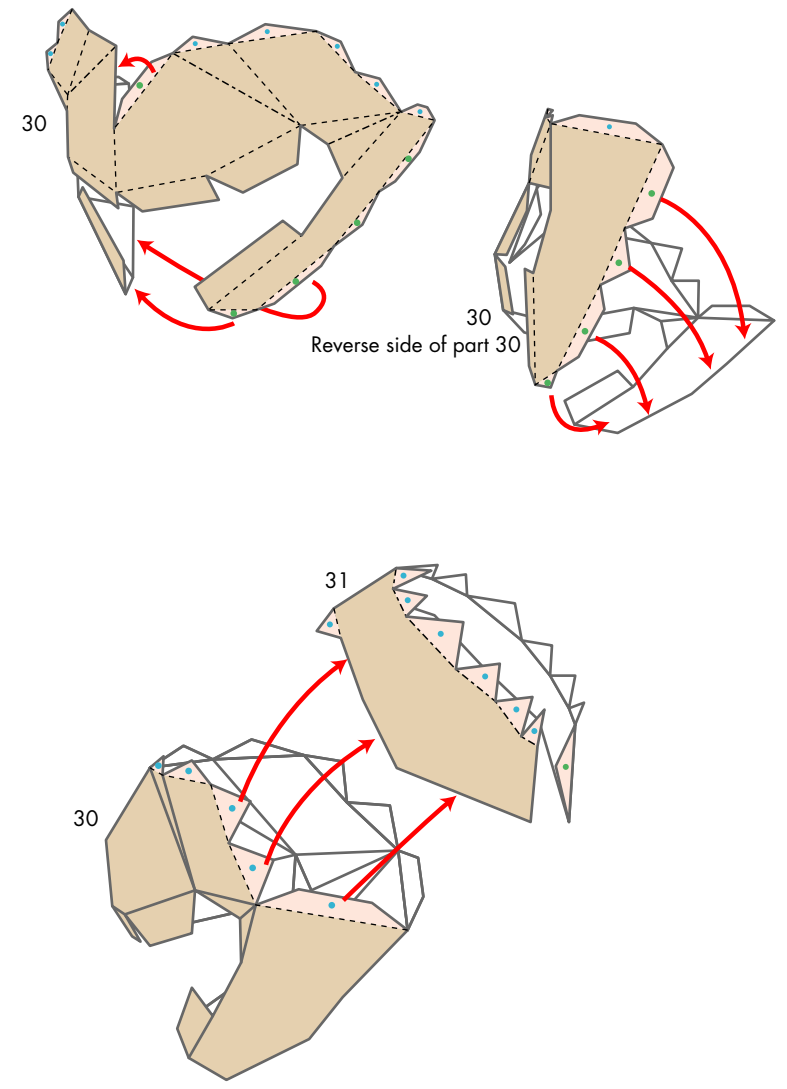
Assembling the body : Part 23



Assembling the arms and neck : Parts 24 - 29



Assembling the head : Parts 30, 31



# Allosaurus : Assembly Instructions

32

32

Assembling the neck and the head:  
Parts 32, 33

32

Assembled parts  
30 - 31

Assembled parts  
30 - 32

33

34

Glue the pieces together so  
that the seams line up

Refer to the photograph when adjusting  
the neck angles.

Assembling the head, the neck, and the label : Part 35

35

Finished!

Allosaurus