

PAPER CRAFT

<http://www.canon.com/c-park/en/>



View of completed model

Total length : approx. 21 m ; weight : approx. 30 t ;
taxonomy : Order Saurischia, suborder Sauropoda, family Diplodocidae
Period : late Jurassic period (150 million years ago) ; habitat : the Americas

Apatosaurus

Editor :  THE NATIONAL SCIENCE MUSEUM
国立科学博物館

The *Apatosaurus* is a large, herbivorous dinosaur whose habitat encompassed North America during the late Jurassic period of the Mesozoic era. Ranging up to roughly 21 meters in length, the *Apatosaurus* featured a large, stout body and a long neck. Famously, following the discoveries of *Apatosaurus* and *Brontosaurus*, it was determined that the two dinosaurs in fact represented the same species, differing only in stage of growth. Since the discovery of *Apatosaurus* had been announced first, its name was chosen as the official zoological name for the species.

* This model was designed for Papercraft and may differ from the original in some respects.

■ Parts list (pattern) : Eight A4 sheets (No. 1 to No. 8)

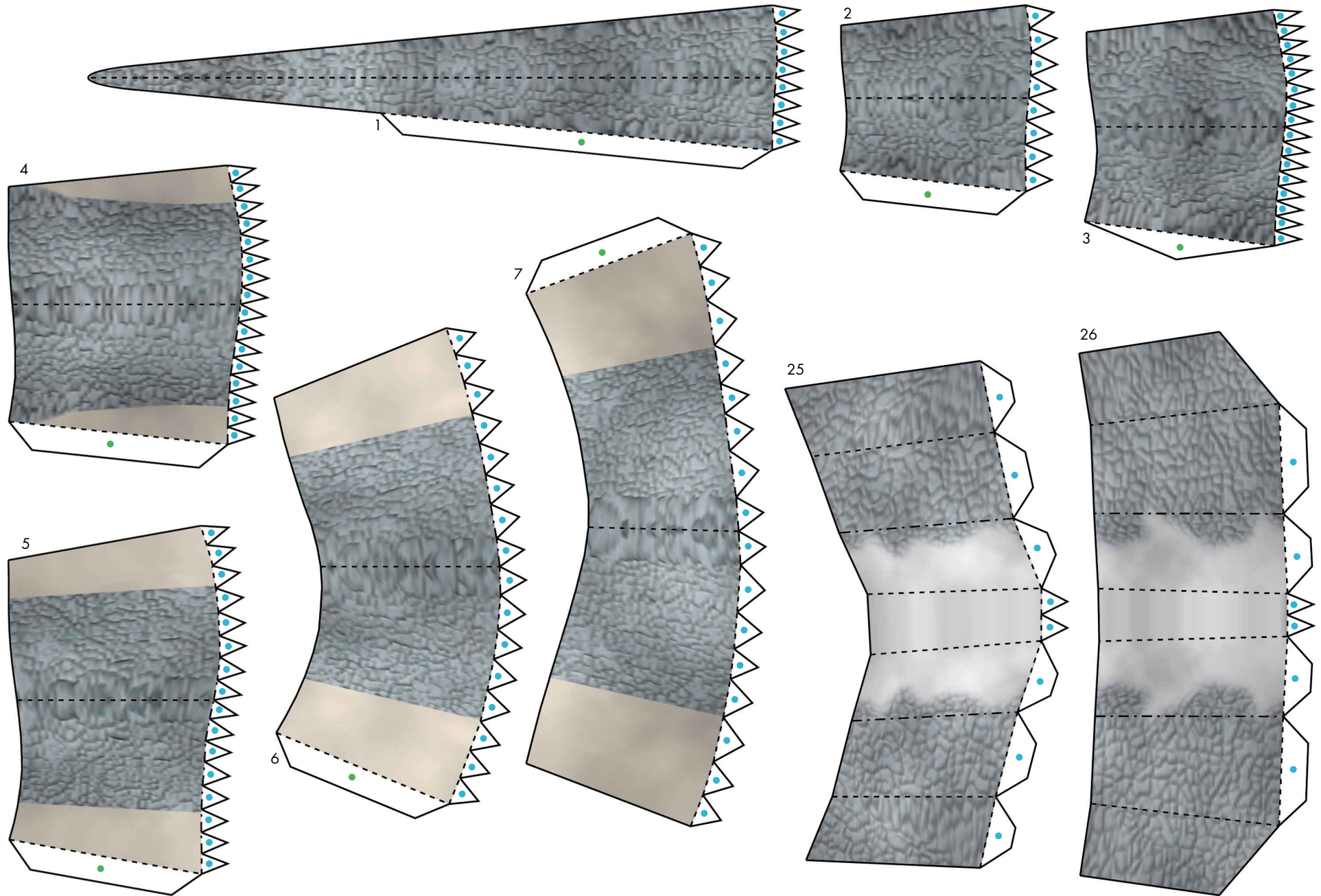
■ No. of Parts : 54

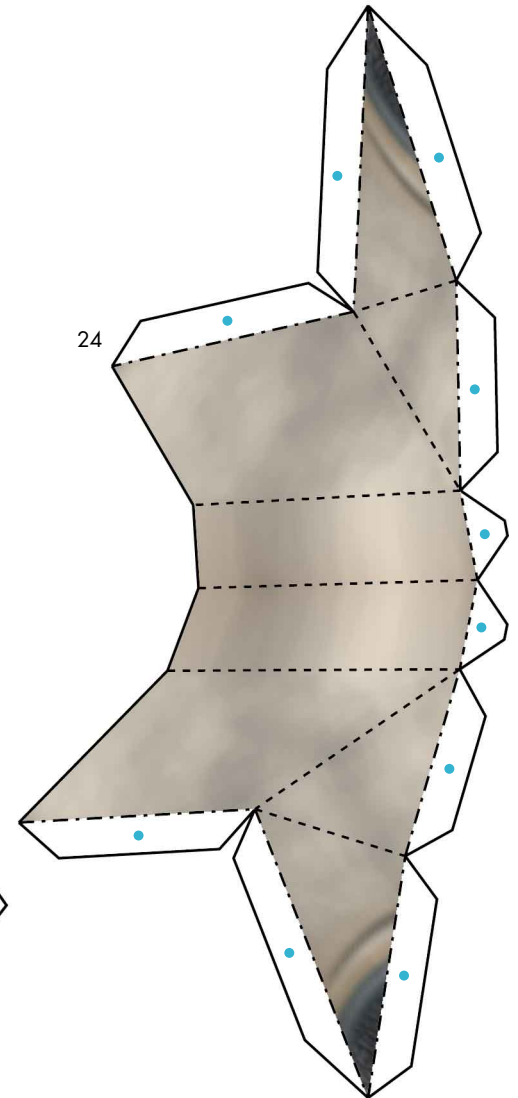
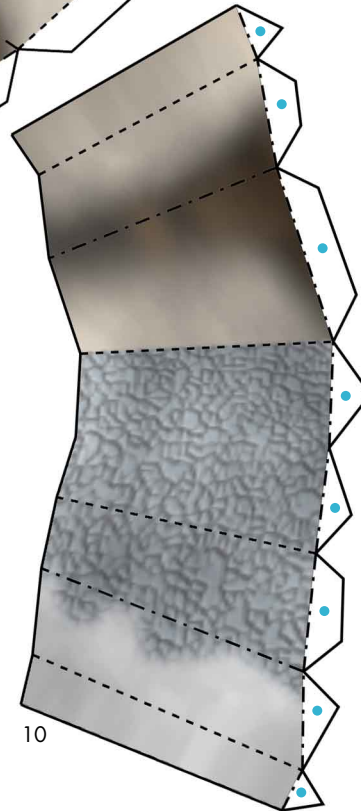
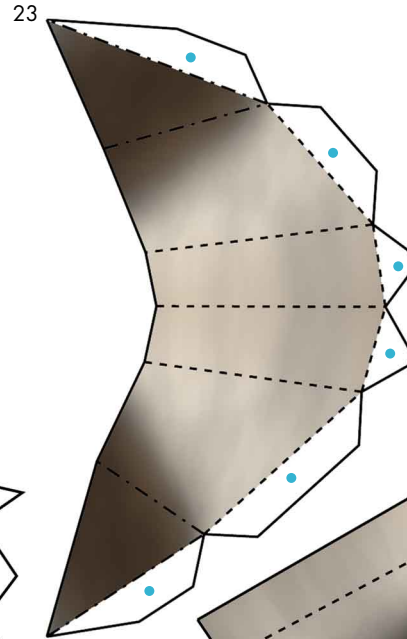
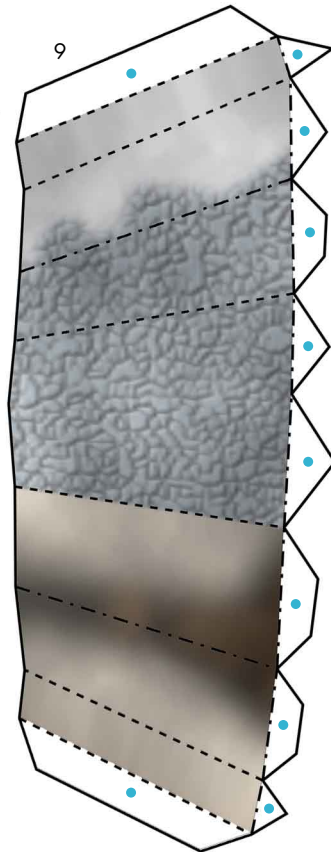
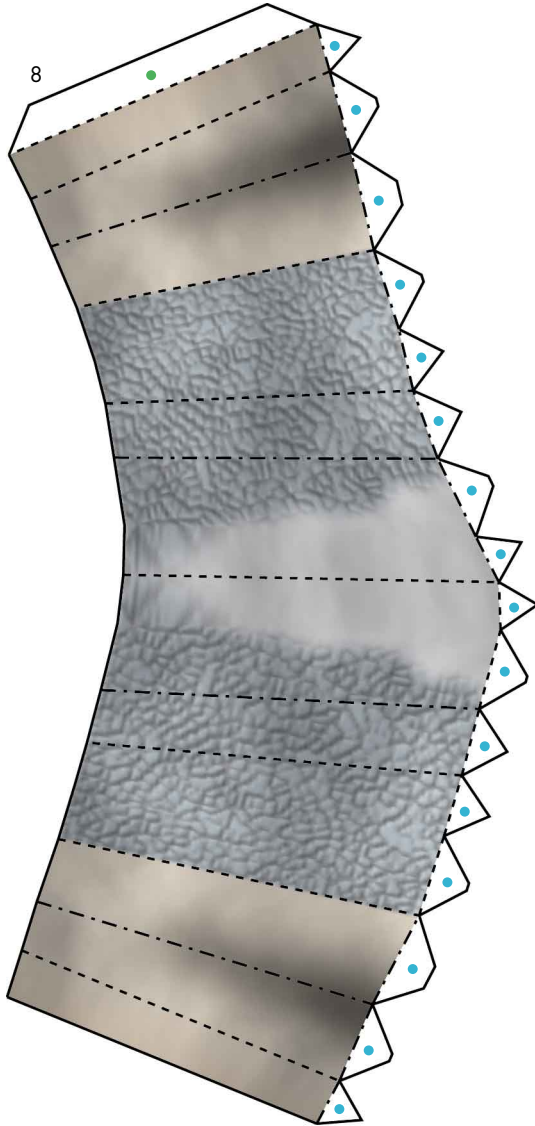
* Build the model by carefully reading the Assembly Instructions, in the parts sheet page order.

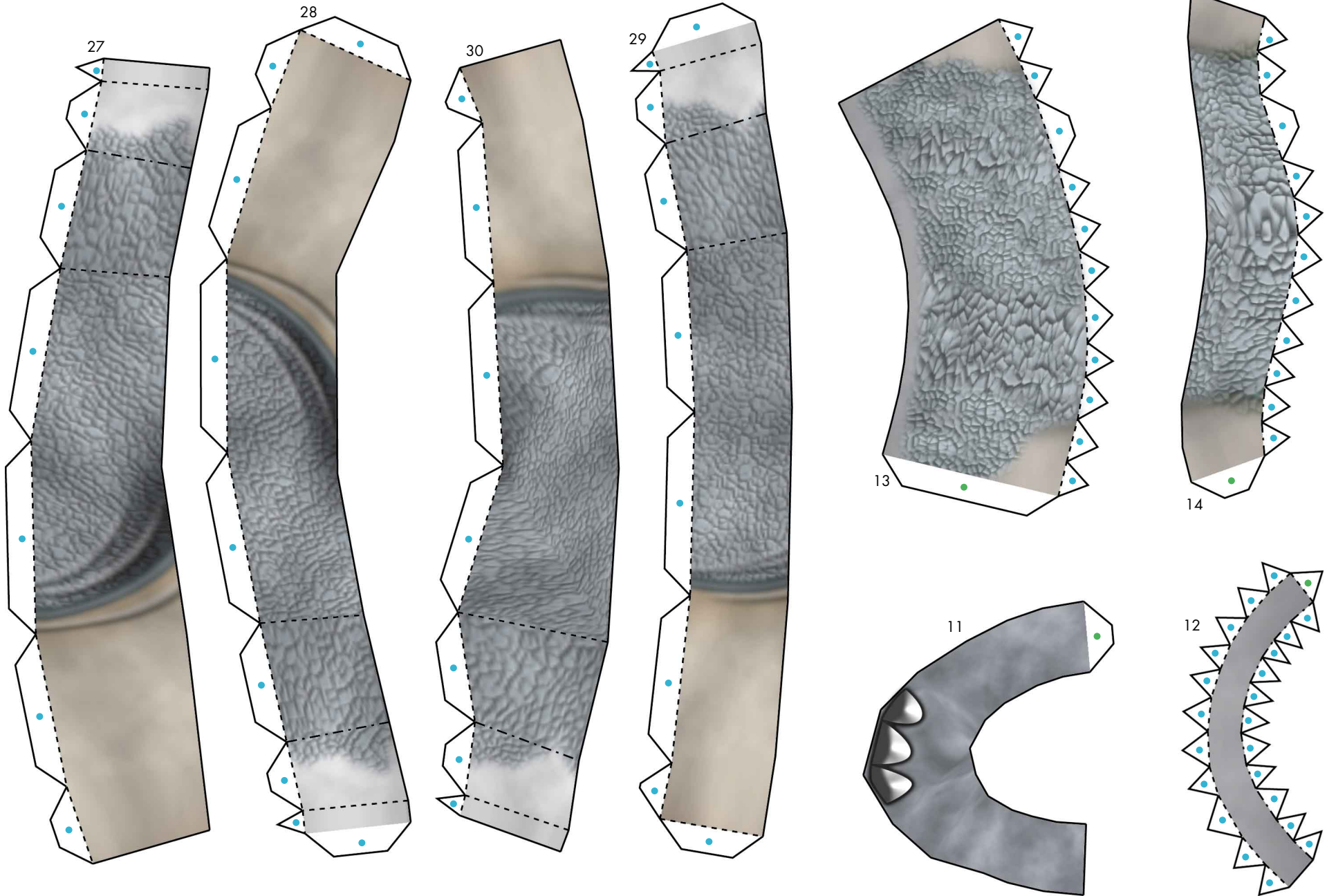


Apatosaurus : Pattern

© Canon Inc. © Y. Watanabe

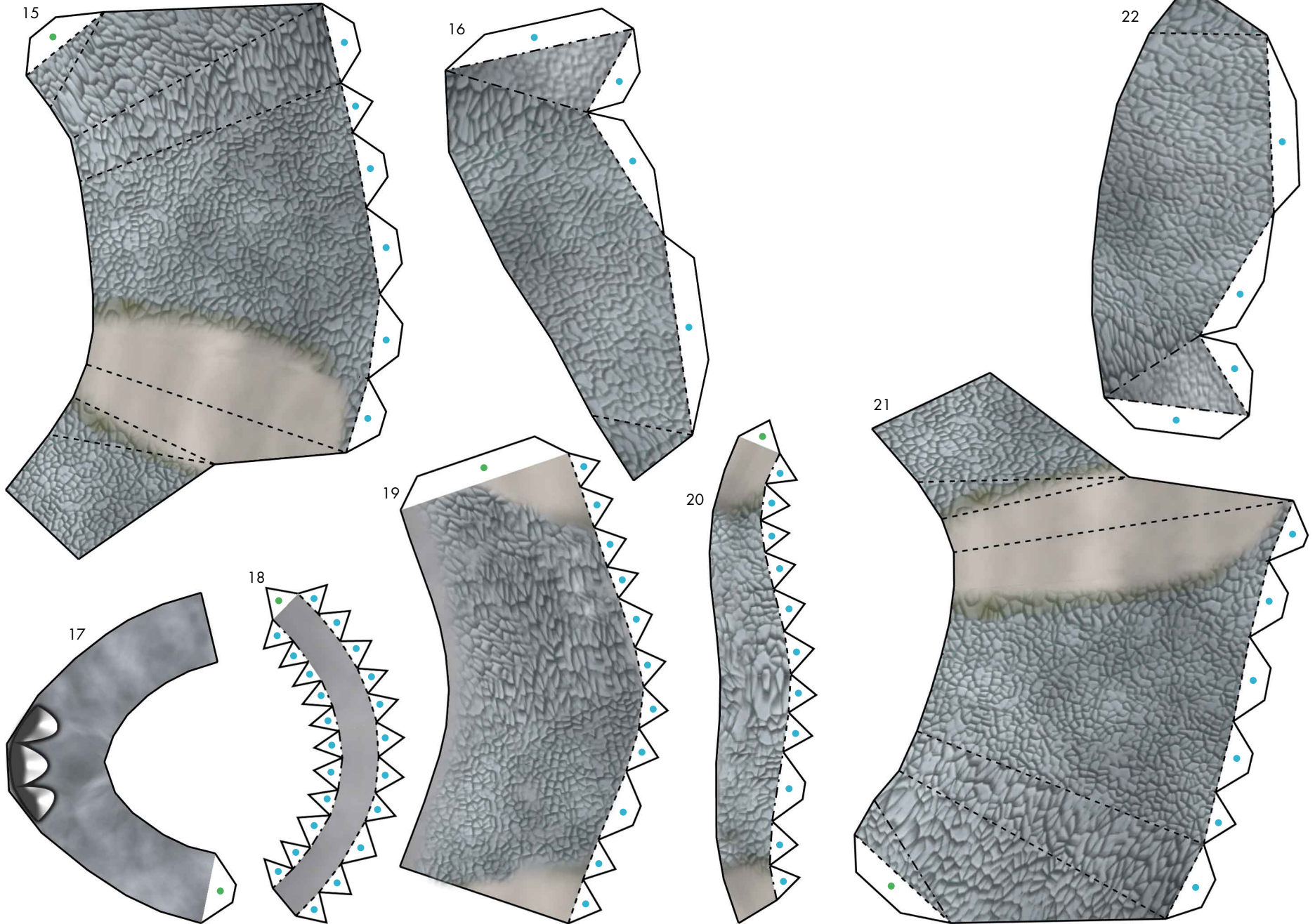




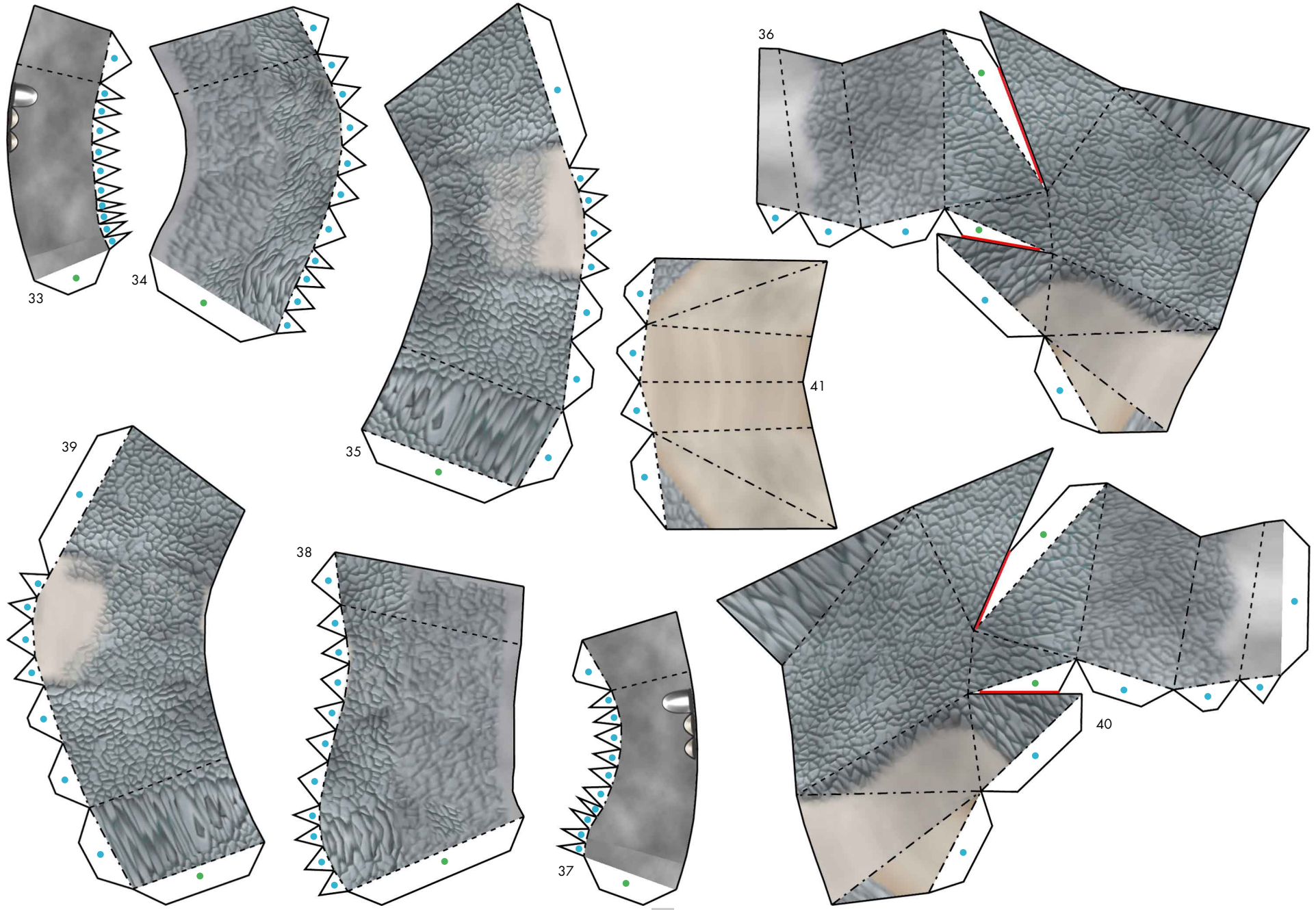


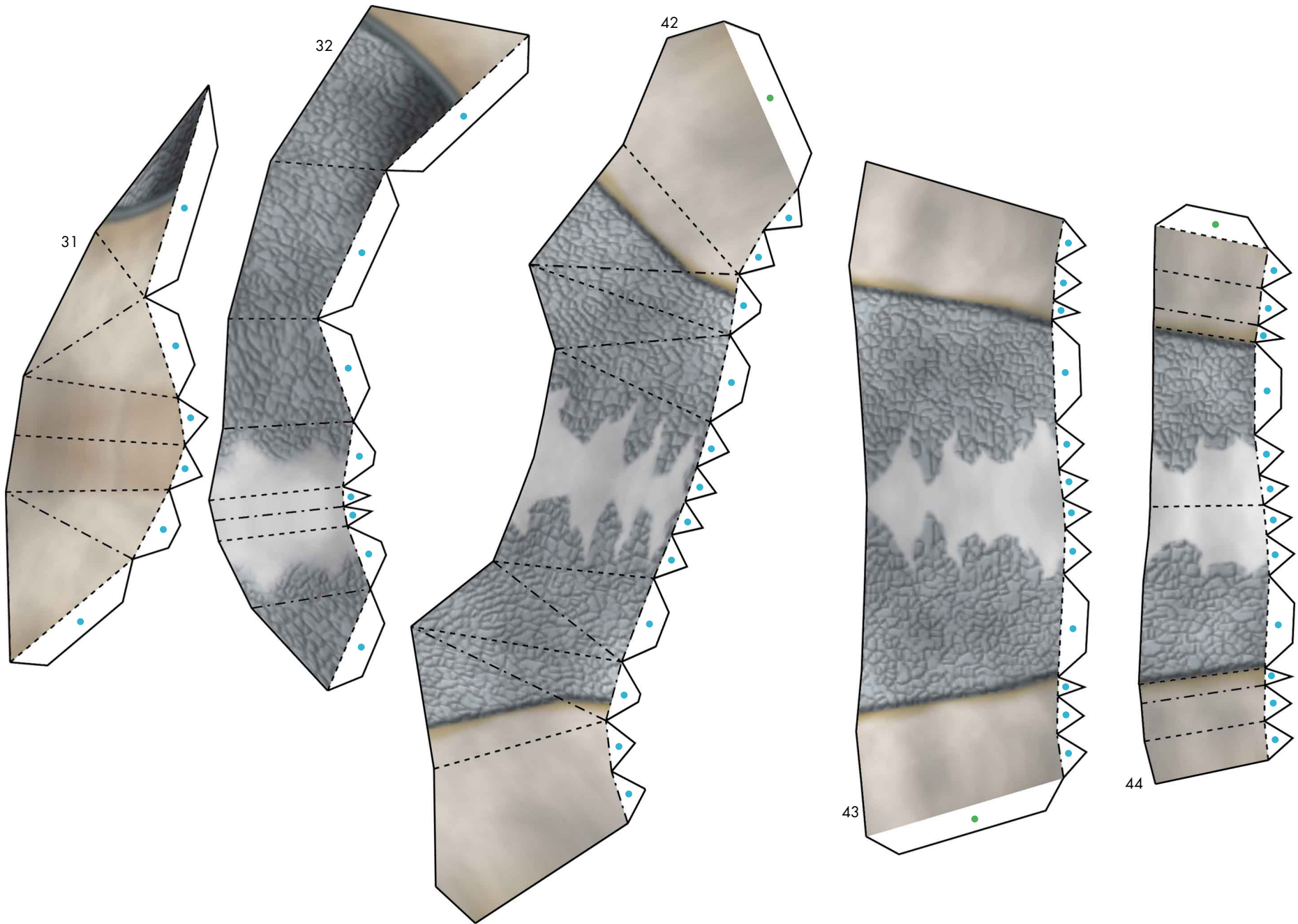
Apatosaurus : Pattern

© Canon Inc. © Y. Watanabe



Apatosaurus : Pattern





Apatosaurus : Pattern

