



Ships of the world : *Nippon Maru* : Pattern

© Canon Inc. © M. Nishiguchi/SENAUN

Canon

PAPER CRAFT

<http://www.canon.com/c-park/en/>



View of completed model

Ships of the world : *Nippon Maru*

With the cooperation of the National Institute For Sea Training

- New *Nippon Maru* : built in 1984 ; 2570 tons ; four masts ; bark ; 110.09 m total length ; Japan

Used as a training vessel by the National Institute for Sea Training, the new *Nippon Maru* set sail in 1984, replacing the older, aging *Nippon Maru*. The new *Nippon Maru* was the first large sailing vessel to be built entirely in Japan – from rig design through construction. With rig performance noticeably superior to the earlier *Nippon Maru*, the new *Nippon Maru* is one of the world's fastest sailing vessels, winning the Boston Teapot Trophy, awarded to the year's fastest sailing vessel, three times: in 1986, 1989, and 1993.

* This model was designed for Papercraft and may differ from the original in some respects.

■ Parts list (pattern) : Nineteen A4 sheets (No. 1 to No. 19)

■ No. of Parts : 125 (Including seven optional parts)

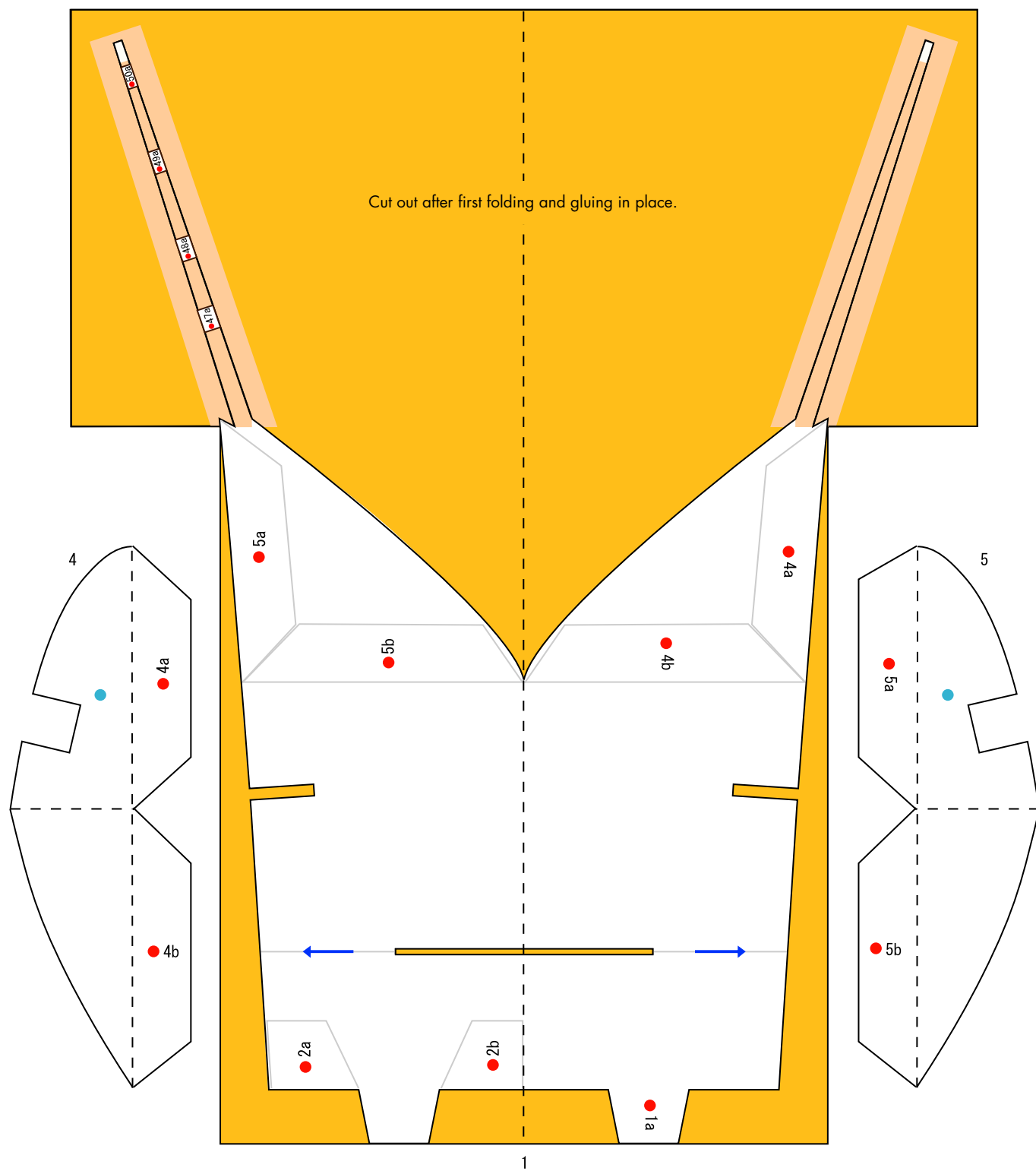
* Build the model by carefully reading the Assembly Instructions , in the parts sheet page order.



Ships of the world : Nippon Maru : Pattern

© Canon Inc. © M. Nishiguchi/SENAUN

Canon

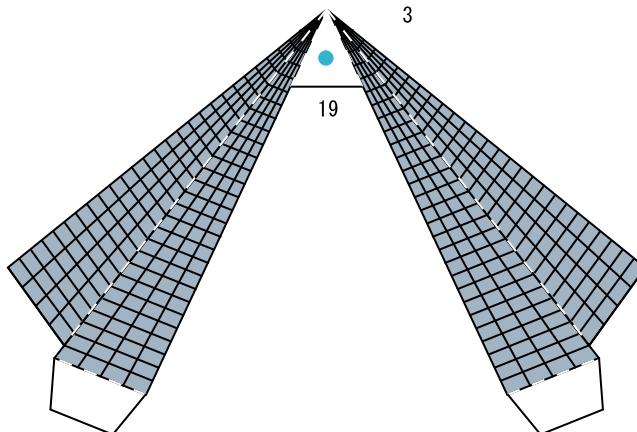
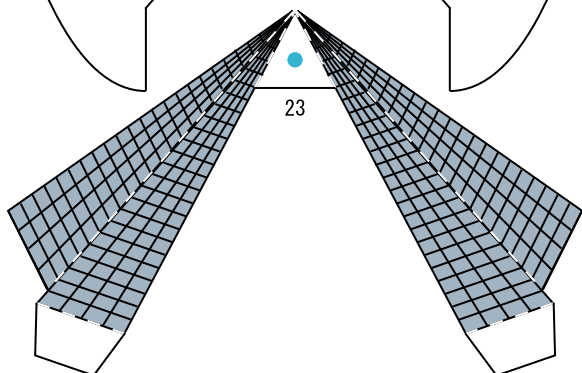
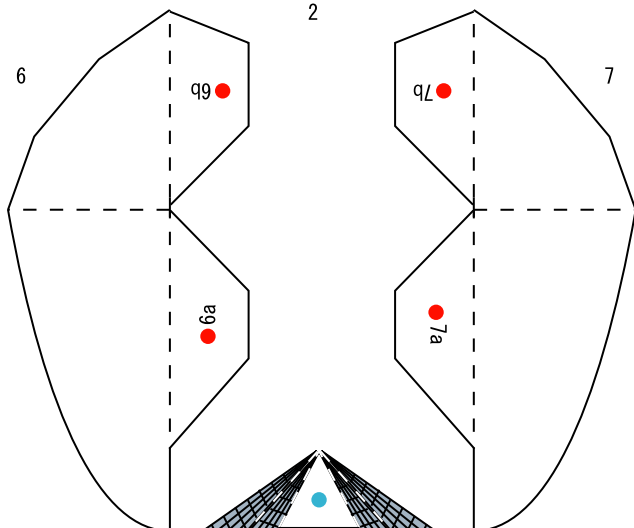
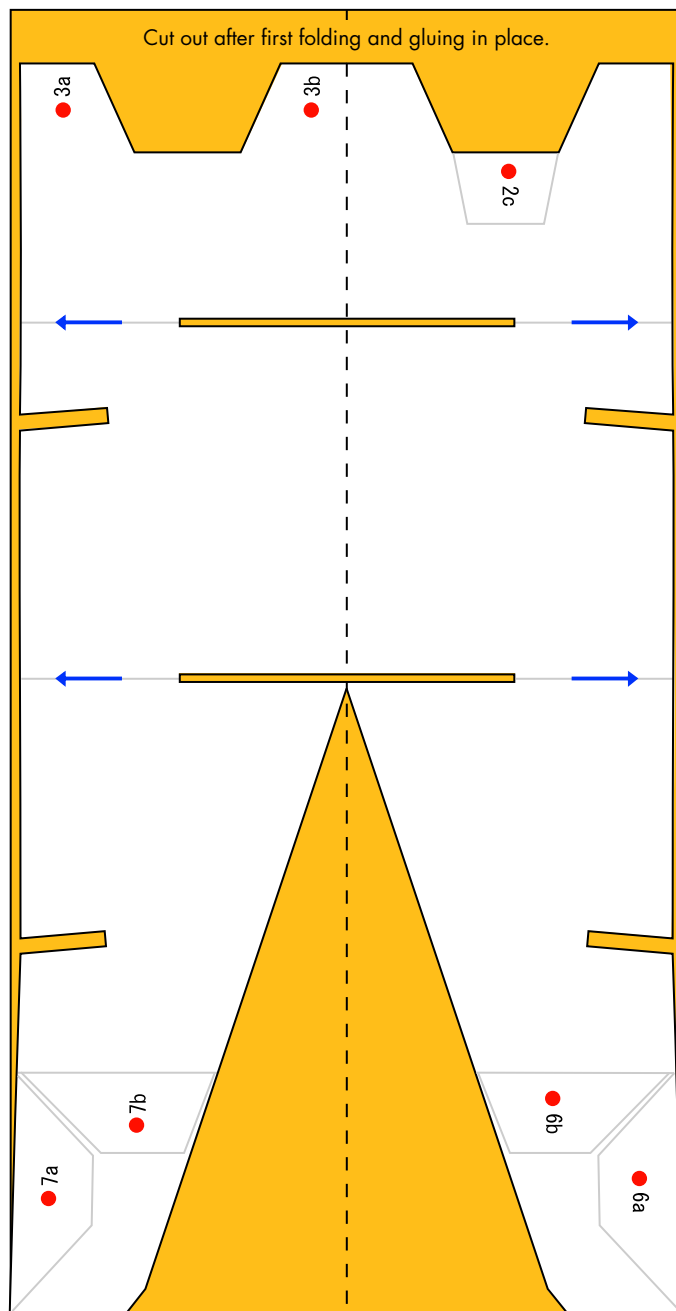
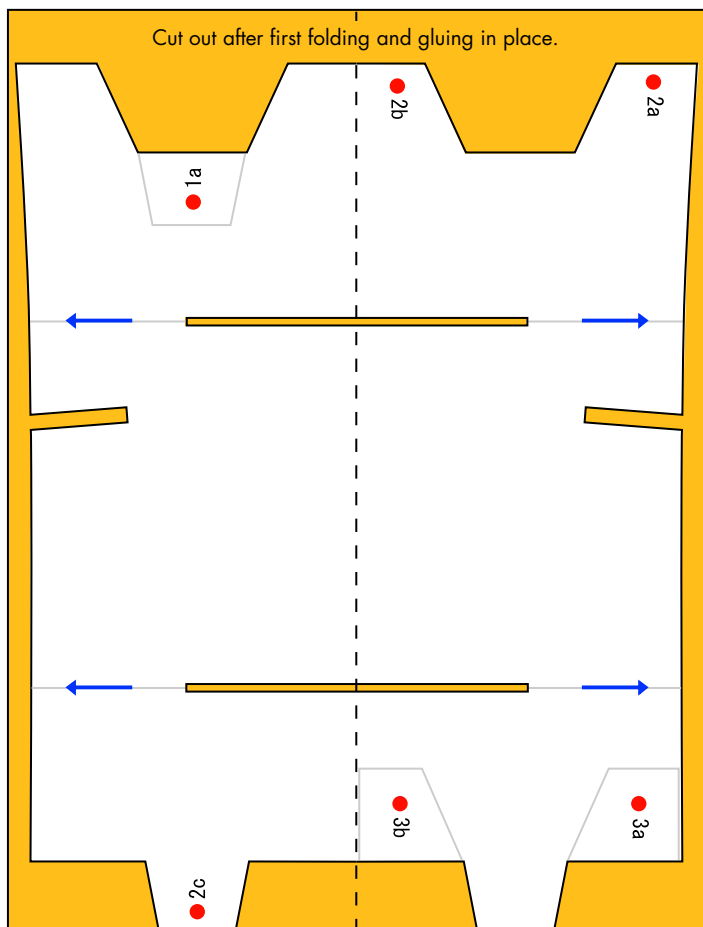




Ships of the world : *Nippon Maru* : Pattern

© Canon Inc. © M. Nishiguchi/SENAUN

Canon

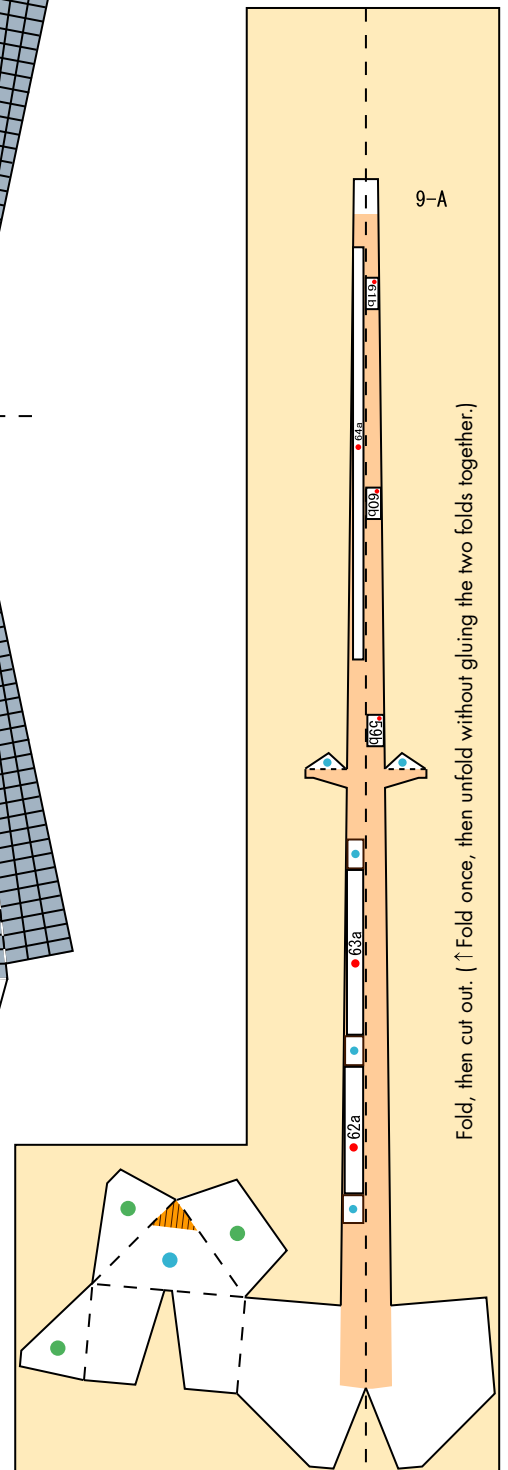
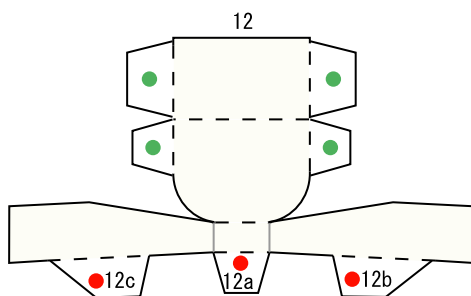
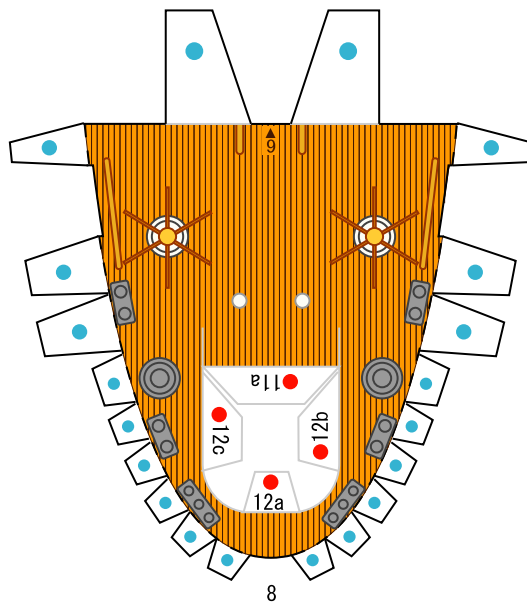
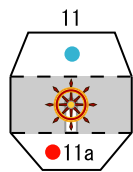
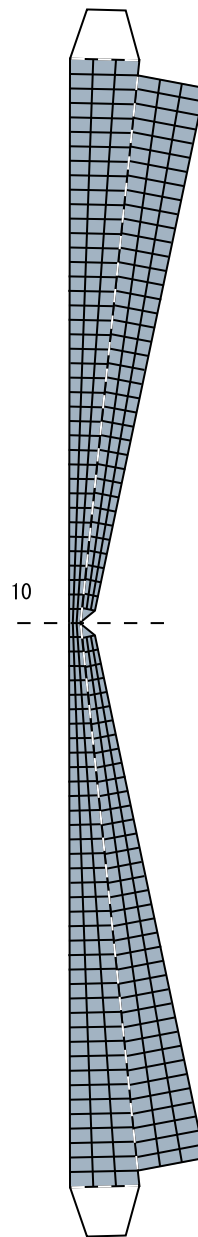
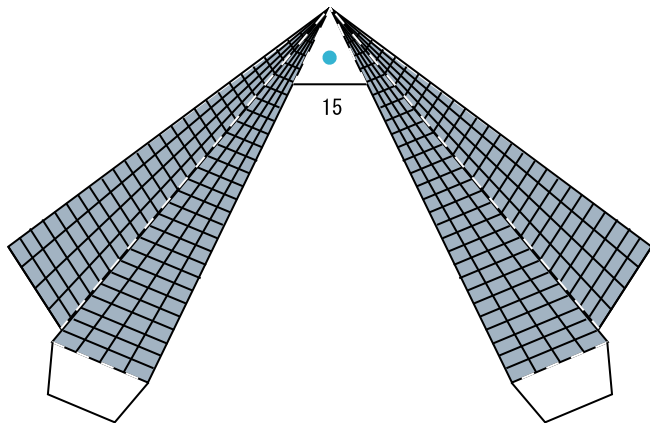




Ships of the world : *Nippon Maru* : Pattern

© Canon Inc. © M. Nishiguchi/SENAUN

Canon



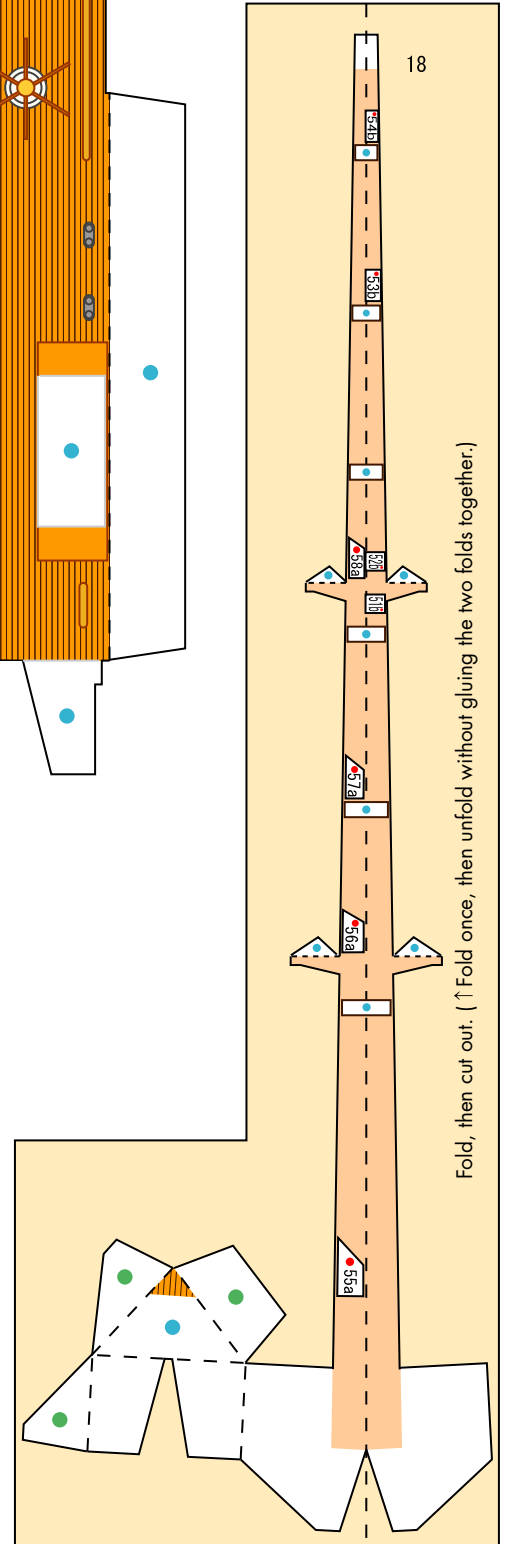
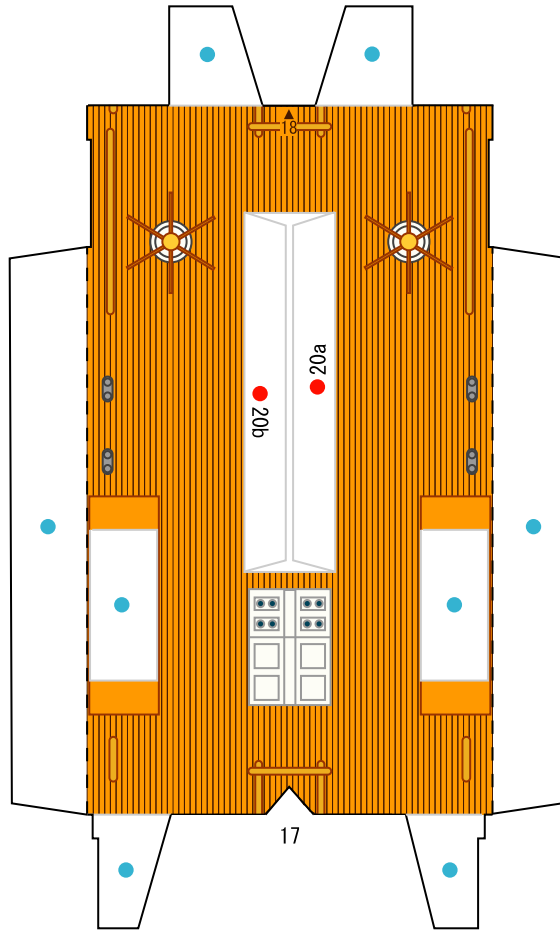
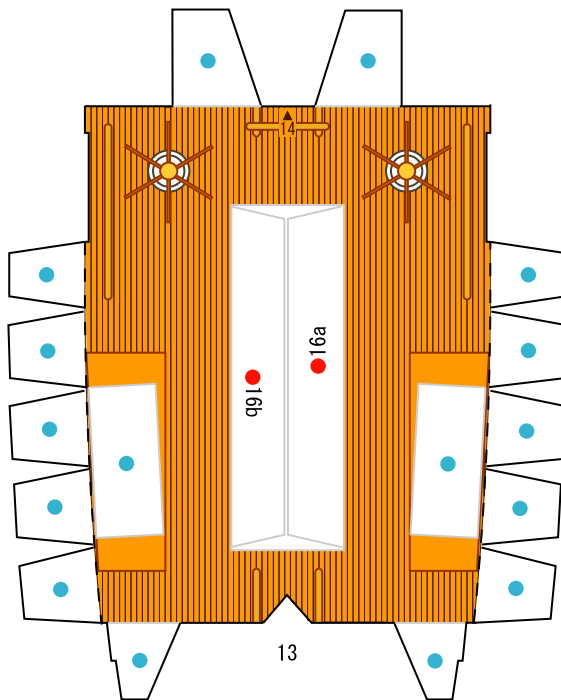
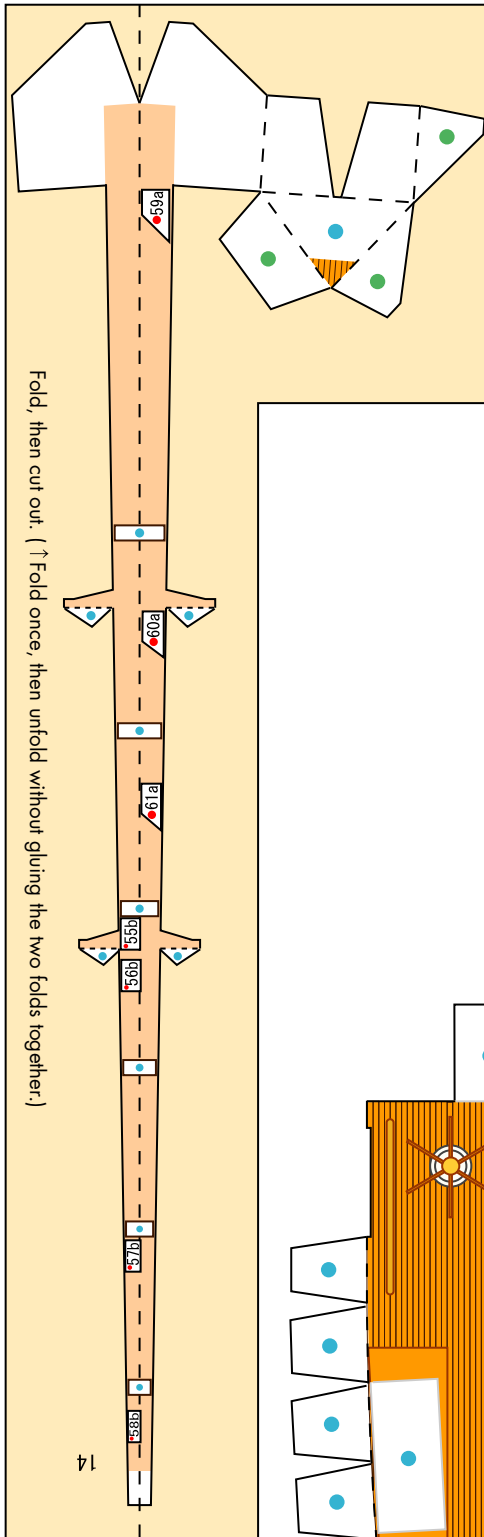
Fold, then cut out. (↑ Fold once, then unfold without gluing the two folds together.)



Ships of the world : *Nippon Maru* : Pattern

© Canon Inc. © M. Nishiguchi/SENAUN

Canon

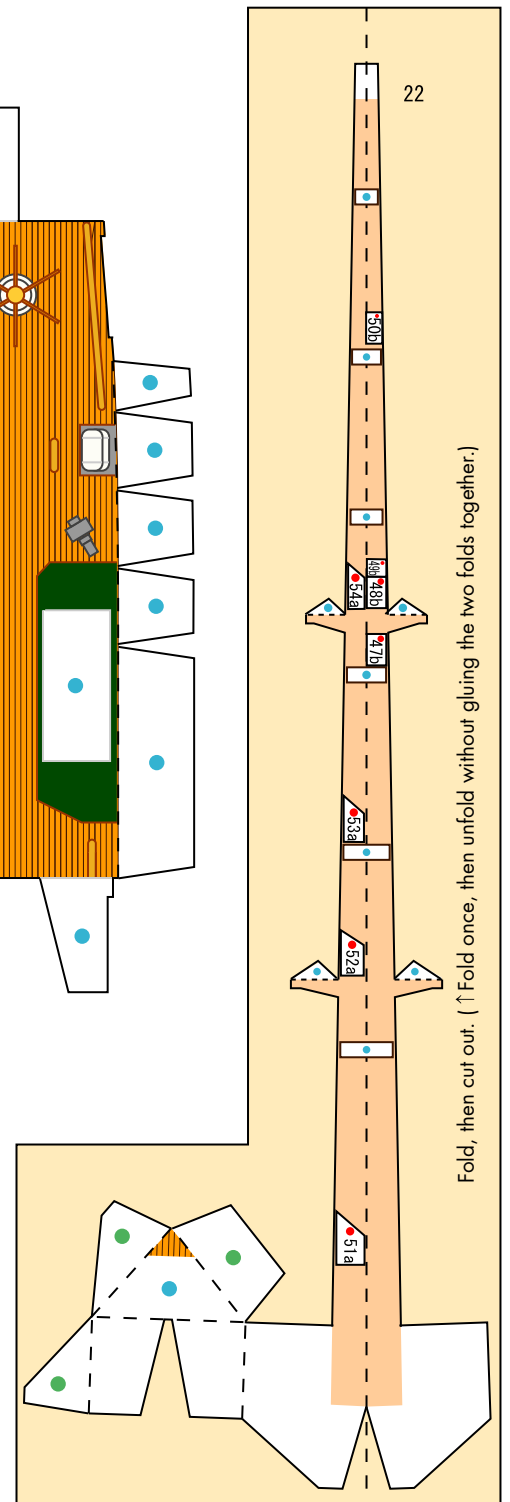
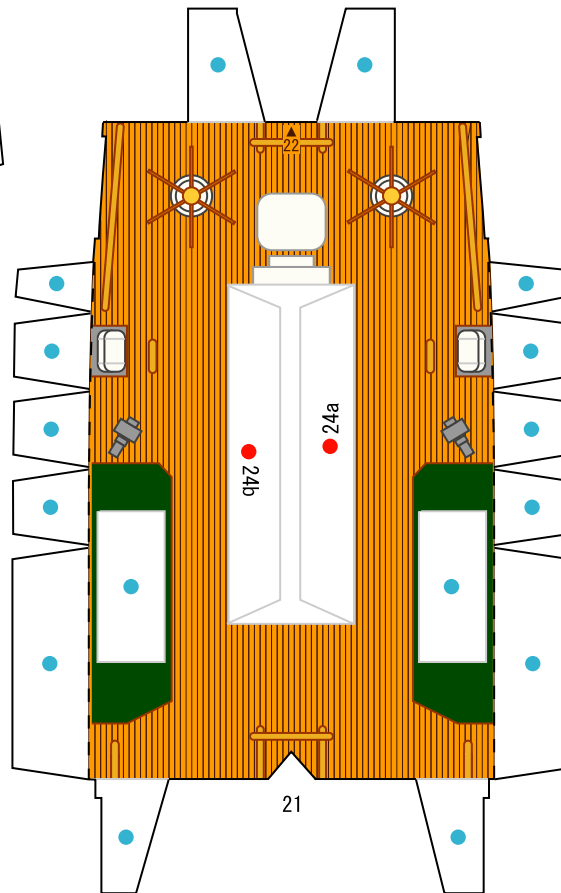
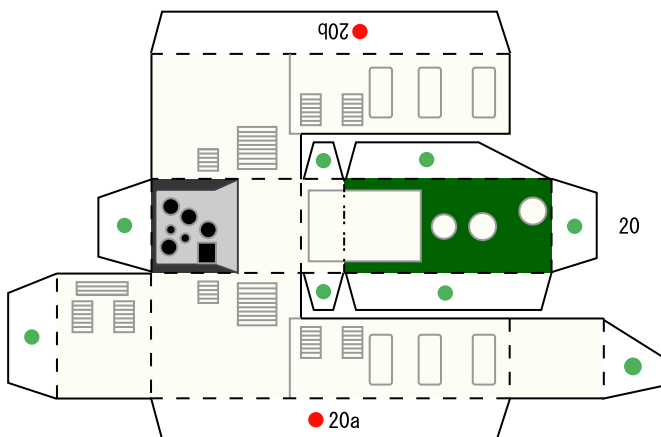
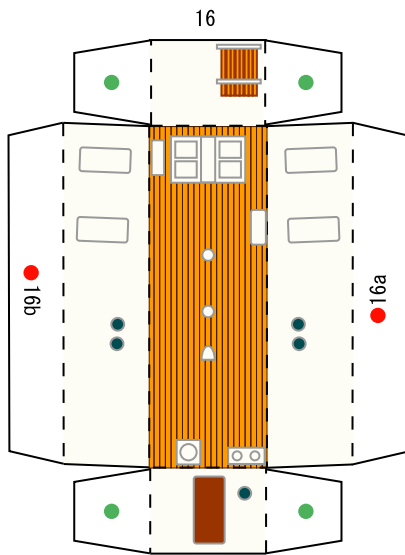
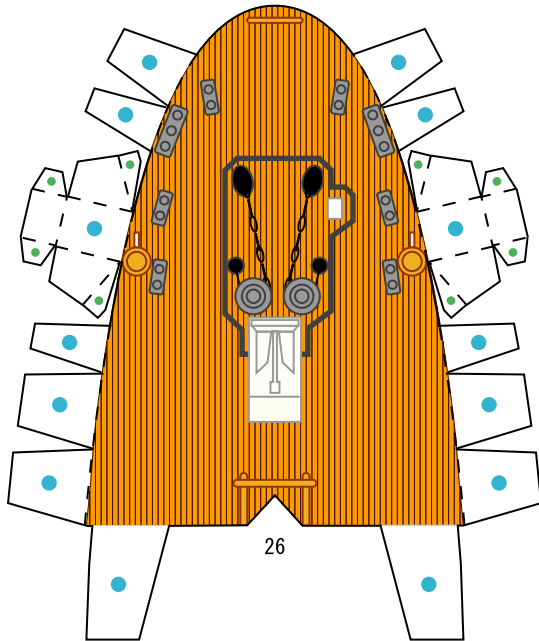




Ships of the world : *Nippon Maru* : Pattern

© Canon Inc. © M. Nishiguchi/SENAUN

Canon



Fold, then cut out. (↑ Fold once, then unfold without gluing the two folds together.)



Ships of the world : Nippon Maru : Pattern

© Canon Inc. © M. Nishiguchi/SENAUN

Canon

