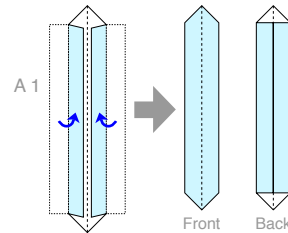




Frame

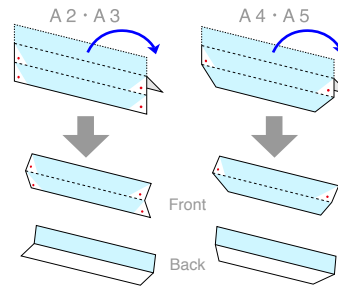
1) Cut out A1-A5 and assemble each part.

As for A1, fold each side inwardly and glue the back of each side together.



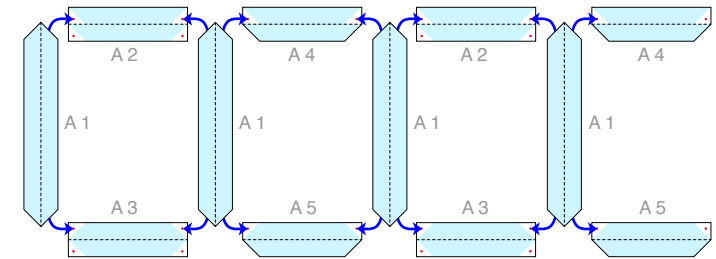
Make four of these.

As for A2-A5, fold the upper side inwardly and glue the back of each side together.

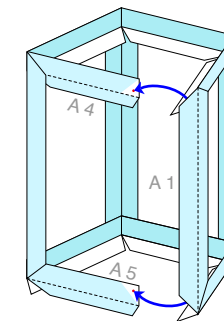


Make two each.

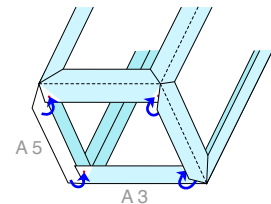
2) Assemble A1-A5.



As shown in the diagram, assemble by attaching both ends of A1 to the glue tabs of A2-A5.



Attach A5 to the remaining A3 glue tabs.



So that it becomes box-shaped, do the same for the ends of A1 and A4/A5.

Likewise, attach A4 to A2.

You will need

Scissors, glue, ruler, a used ball-point pen, white string

Explanation of symbols

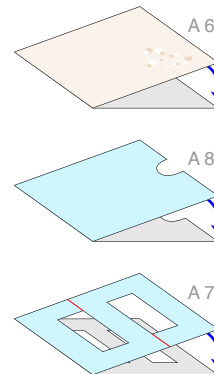
- Mountain fold (Dotted line)
- - - - - Valley fold (Dashed and dotted line)
- Cut line (Solid line)
- Cut in line (Red solid line)
- Glue tab
- ✂ Cut out

Assembly tip

Trace along the folds with a ruler and a used pen (no ink) to get a sharper, easier fold.

Caution: This craft requires the use of glue, scissors, and other tools which may be dangerous to young children. Please keep them out of reach of children while you work.

3) Cut out A6-A8 and assemble each part.

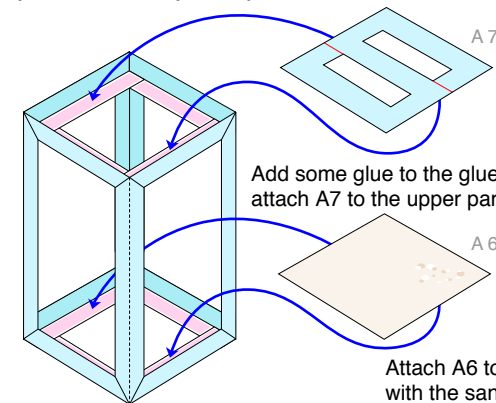


Fold A6 and A8 in half and attach the back of each side together respectively.

*A8 is the lid (upper portion) of the frame. When everything is complete, put it on the top.

As for A7, cut along the cut line and fold it in half after cutting out the designated area. Then attach the sides together.

4) Assemble A6 and A7 to the frame you've already completed.



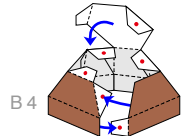
Add some glue to the glue tabs and attach A7 to the upper part of the frame.

Attach A6 to the bottom with the sand part face up.

Option 1

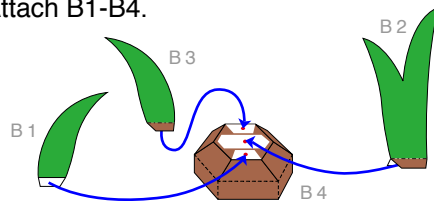
1) Cut out B1-B4 and assemble each part.

Fold B1-B3 in half, attach the back of each respective side together, and cut each piece out.



As for B4, start assembly by attaching from the sides. As a final step, put the remaining piece on the top like a lid.

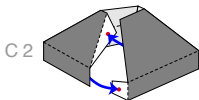
2) Attach B1-B4.



Option 2

1) Cut out C1 and C2 and assemble each part.

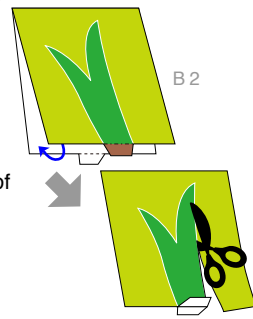
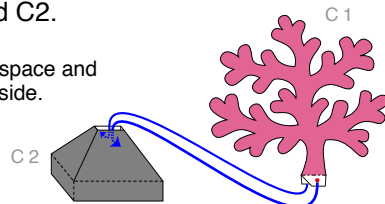
Fold C1 in half, attach the back of each respective side together, and cut each piece out.



A space will be created on the top of C2.

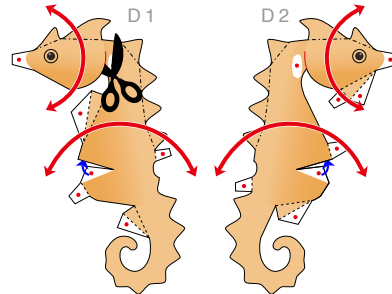
2) Attach C1 and C2.

Insert C1 in C2's space and attach it on the inside.



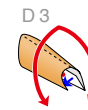
Seahorse

1) Cut out D1 and D2, make incisions, and curve them as indicated by the arrows.



Assemble the body part as well.

2) Cut out D3-D7 and assemble each part.



As for D3, curve it as indicated by the arrow so that it becomes tubular in shape.



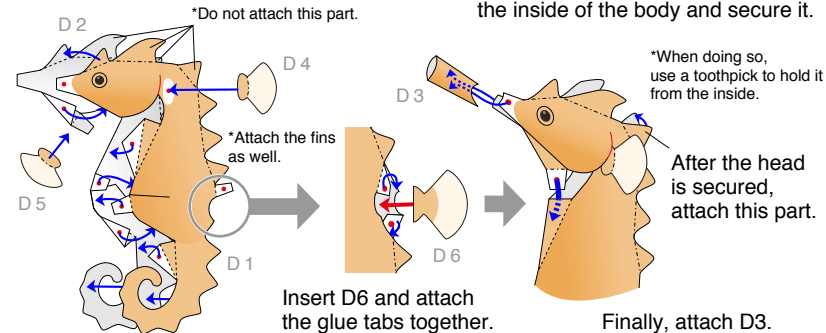
Fold D4-D6 in half and attach the back of each side together respectively.



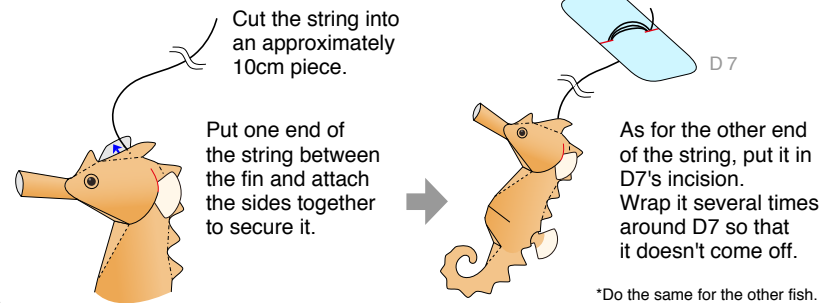
Fold D7 in half, attach the back of each side together, and make incisions.

3) Attach D1-D6.

Insert the head's glue tab into the inside of the body and secure it.



4) Attach the string and D7 on the seahorse.



Finish

1) Wrap the seahorse's string around D7 as many times as you wish to obtain your desired length.

2) Hook the seahorse on the hole found in the upper part of the frame.

3) Arrange Option 1 and Option 2, put the lid (frame A8) on top, and you're done!

