

# Canon Gift box D (Brown) : Parts

Canon® is a registered trademark of Canon Inc. © Canon Inc. © Yukiko Tanikoshi



## You will need

scissors, paste, a used ballpoint pen (tracing along the fold lines makes them easier to fold)

## Explanation of Symbols

### ▲ Numbered glue tabs

Glue the parts together in the order indicated by the numbers.



**[Caution]**

Glue, scissors and other tools may be dangerous to young children so be sure to keep them out of the reach of young children.

## Parts

— Cut line

- - - Mountain fold

- · - · - Valley fold

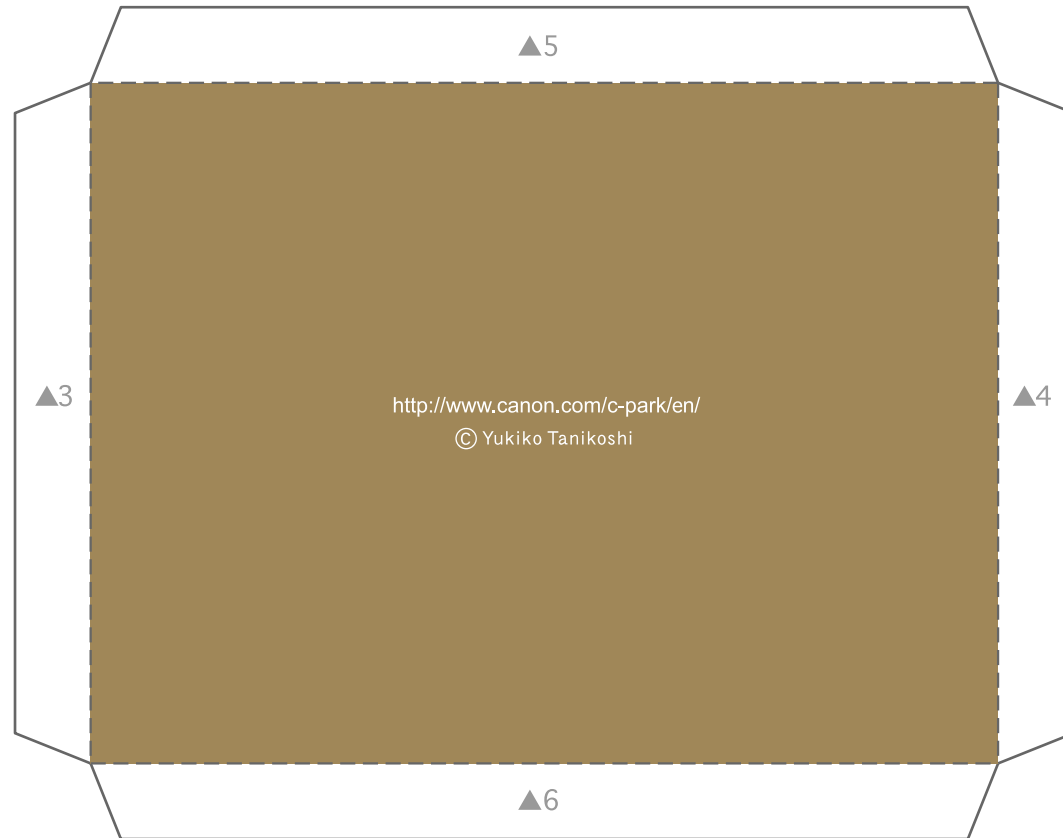
— Slot

1



## Parts

2

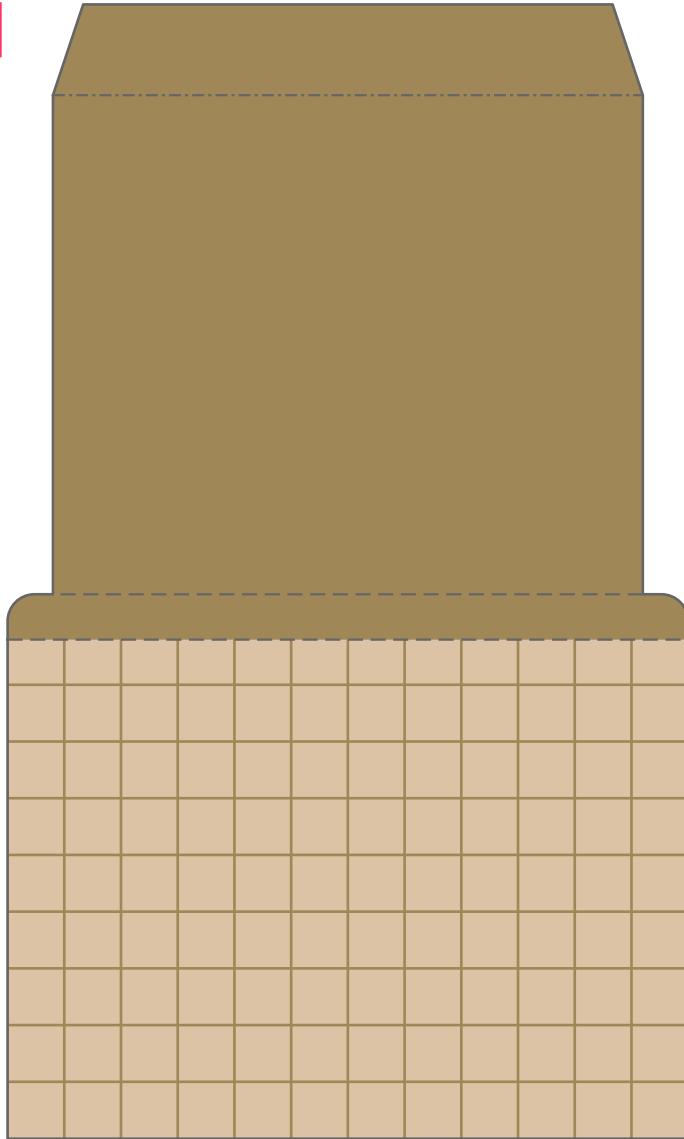


# Canon Gift box D (Brown) : Parts

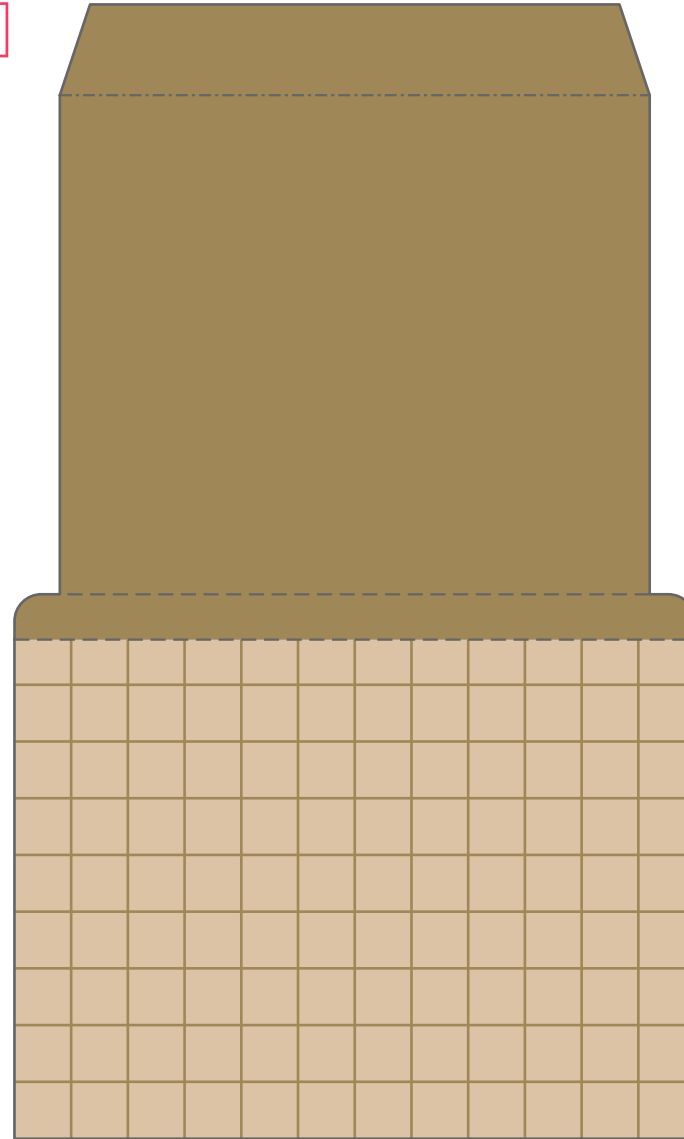
Canon® is a registered trademark of Canon Inc. © Canon Inc. © Yukiko Tanikoshi

## Parts

3



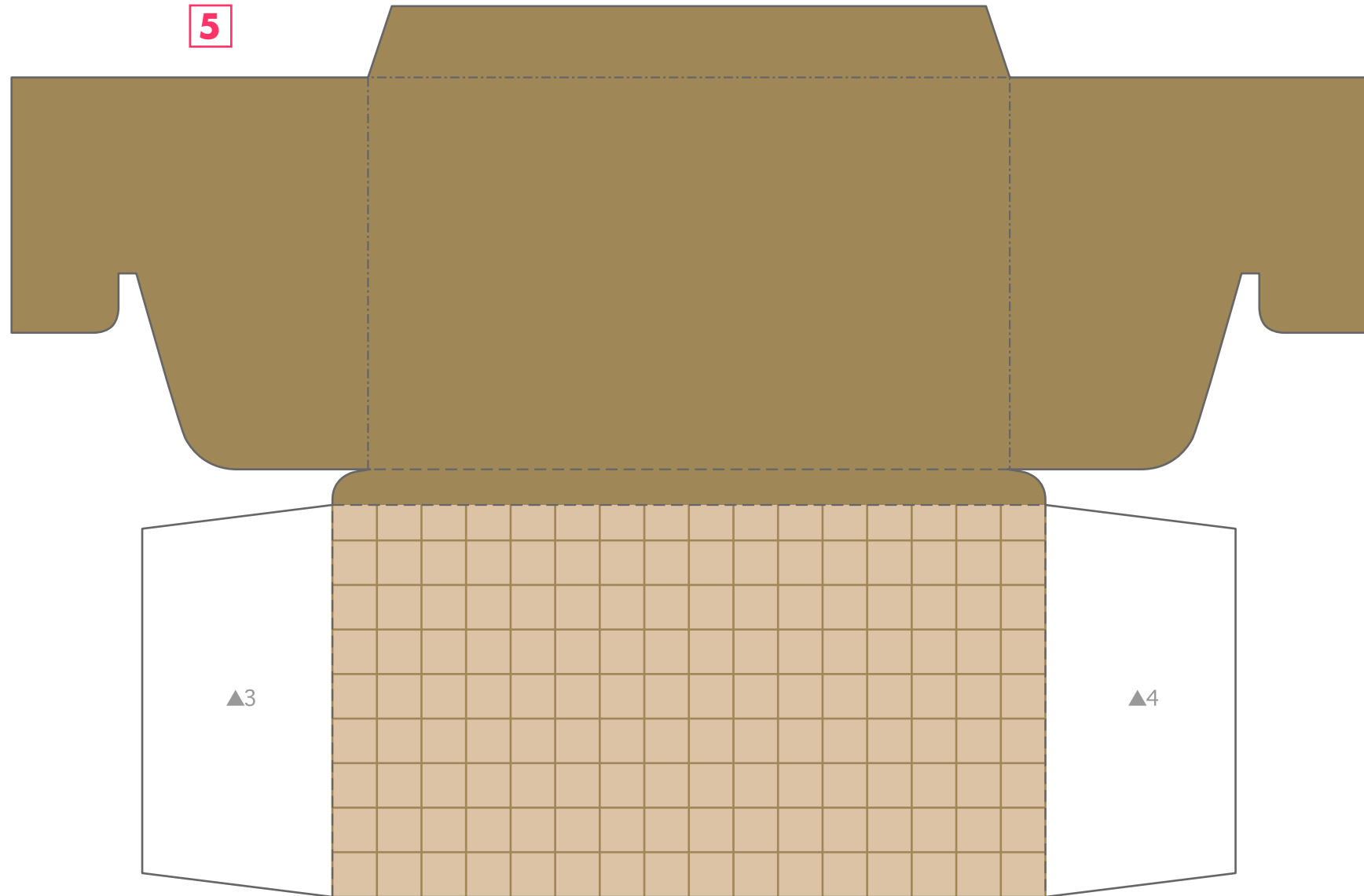
4



# Canon Gift box D (Brown) : Parts

Canon® is a registered trademark of Canon Inc. © Canon Inc. © Yukiko Tanikoshi

## Parts

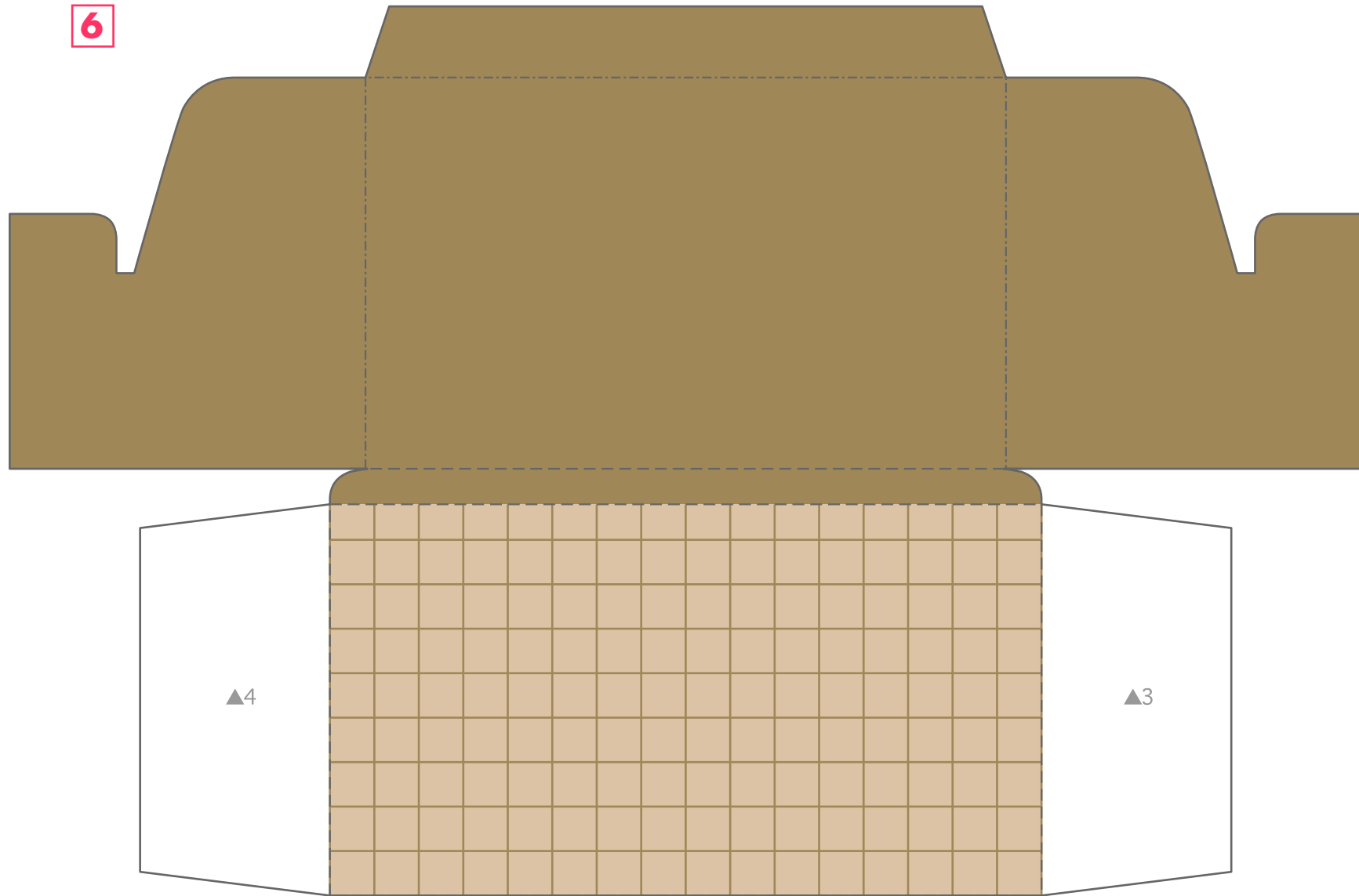


# Canon Gift box D (Brown) : Parts

Canon® is a registered trademark of Canon Inc. © Canon Inc. © Yukiko Tanikoshi

## Parts

6

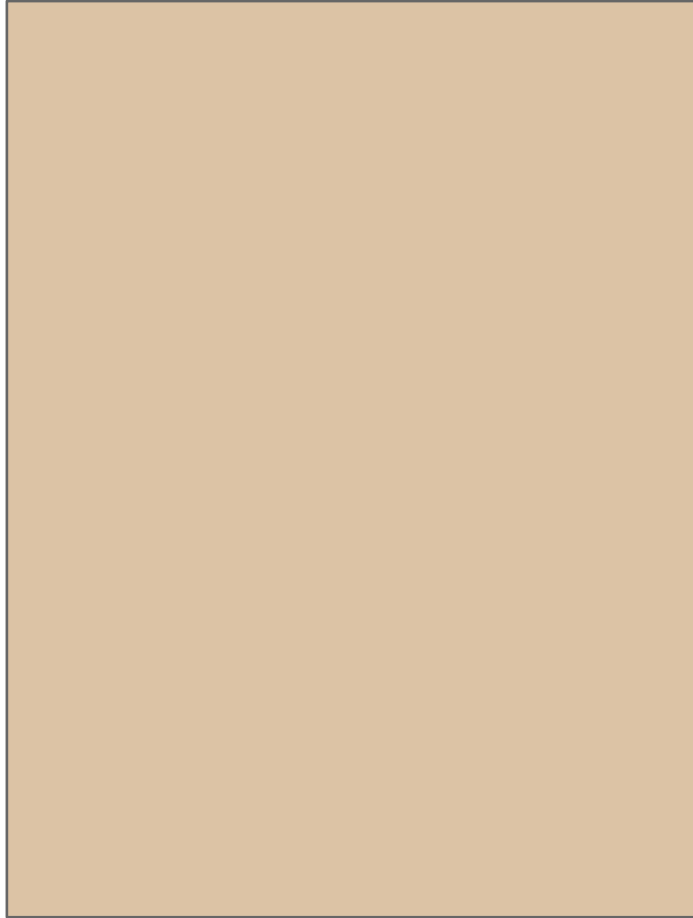


# Canon Gift box D (Brown) : Parts

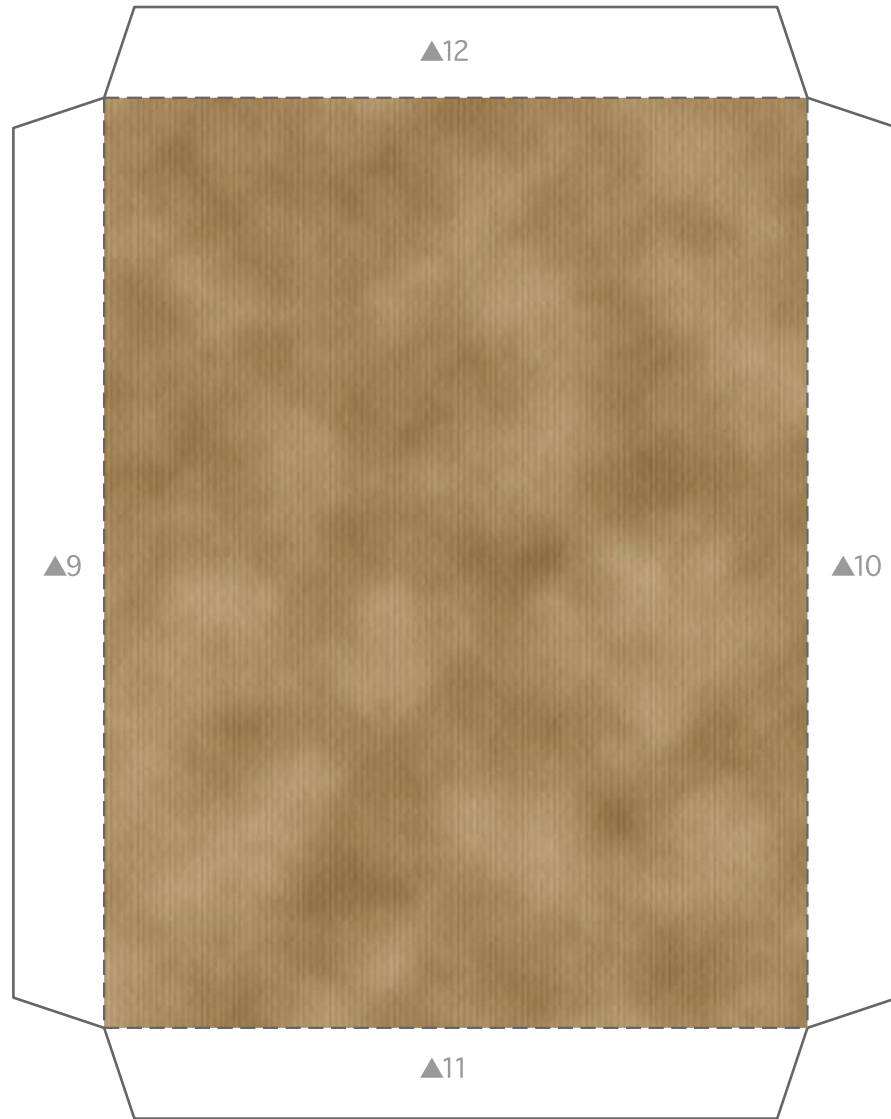
Canon ® is a registered trademark of Canon Inc. © Canon Inc. © Yukiko Tanikoshi

## Parts

7



8

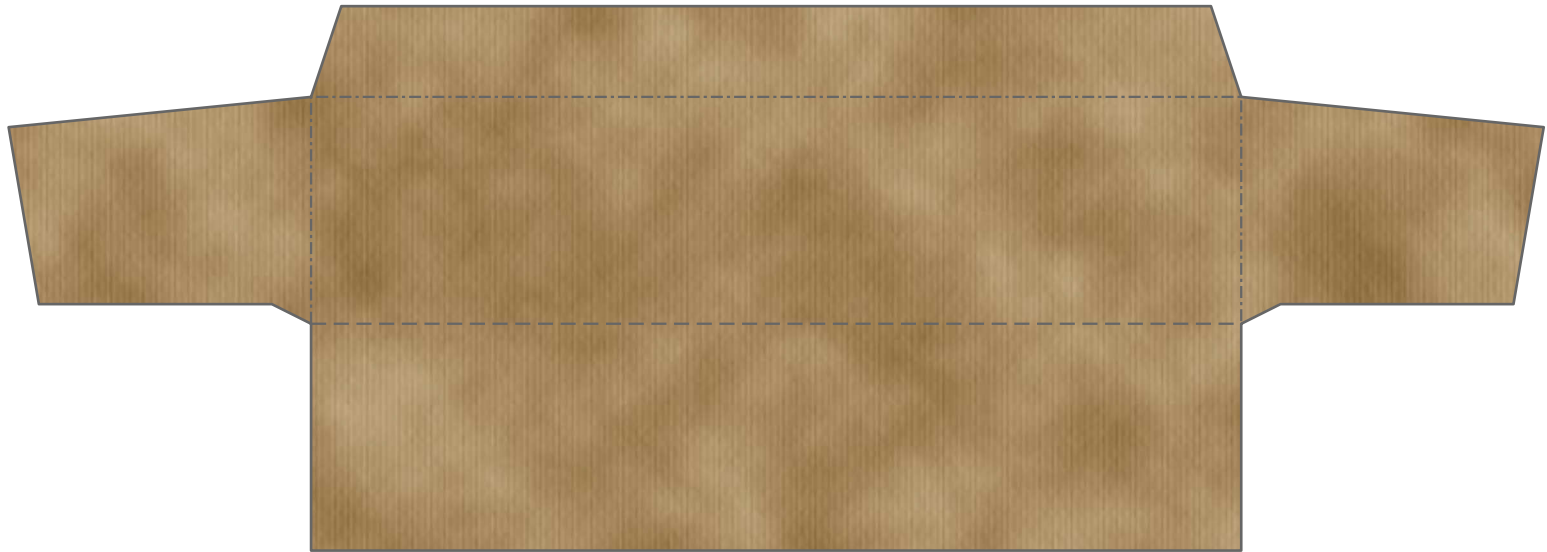


# Canon Gift box D (Brown) : Parts

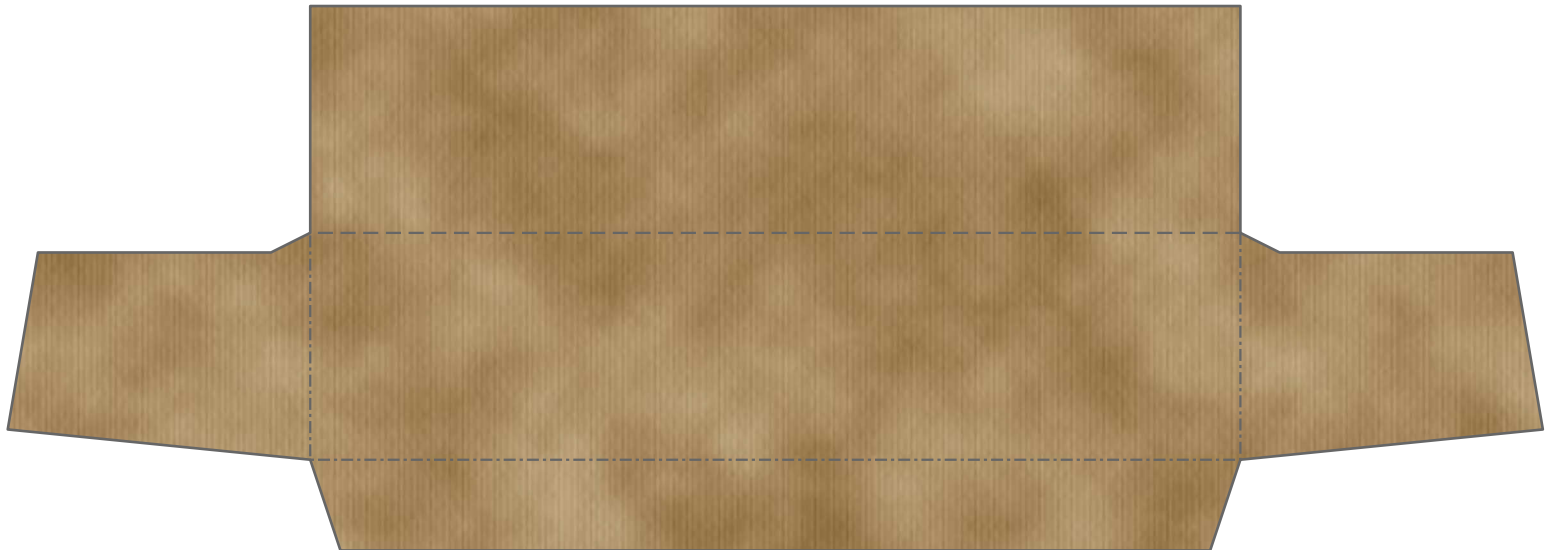
Canon ® is a registered trademark of Canon Inc. © Canon Inc. © Yukiko Tanikoshi

## Parts

9



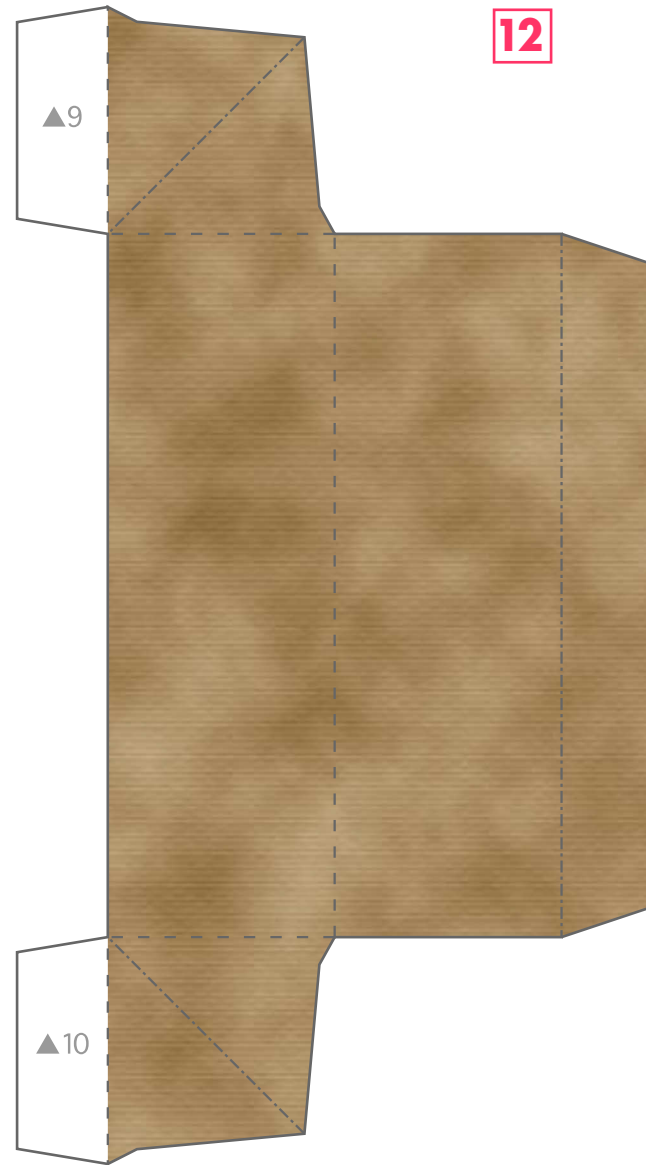
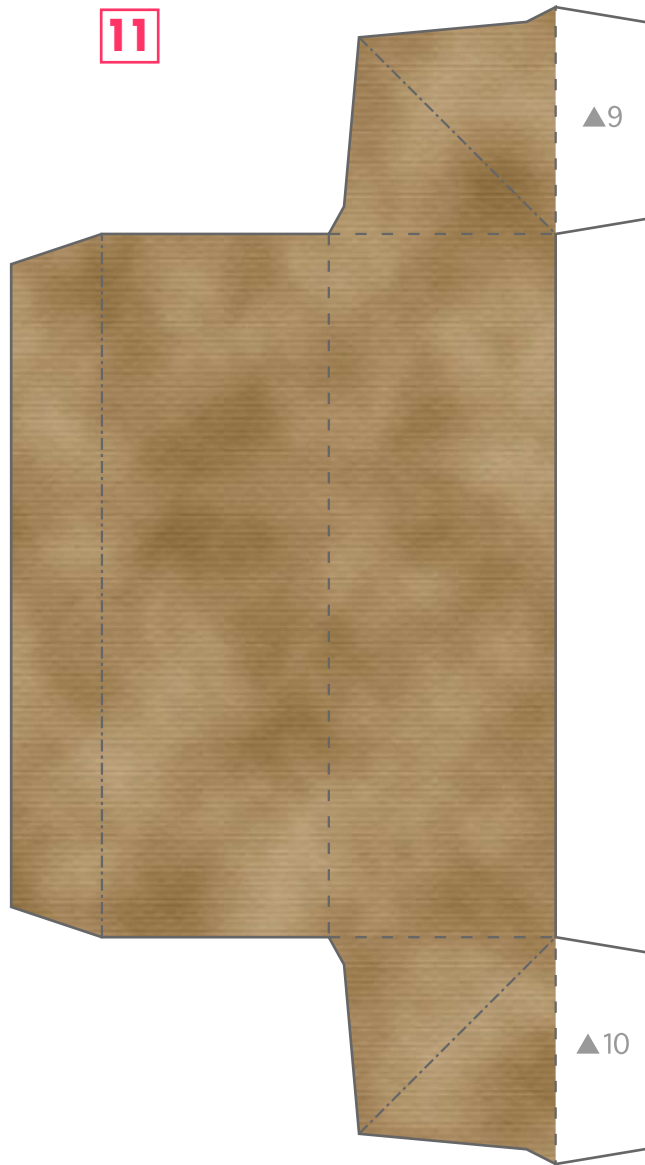
10



# Canon Gift box D (Brown) : Parts

Canon ® is a registered trademark of Canon Inc. © Canon Inc. © Yukiko Tanikoshi

## Parts



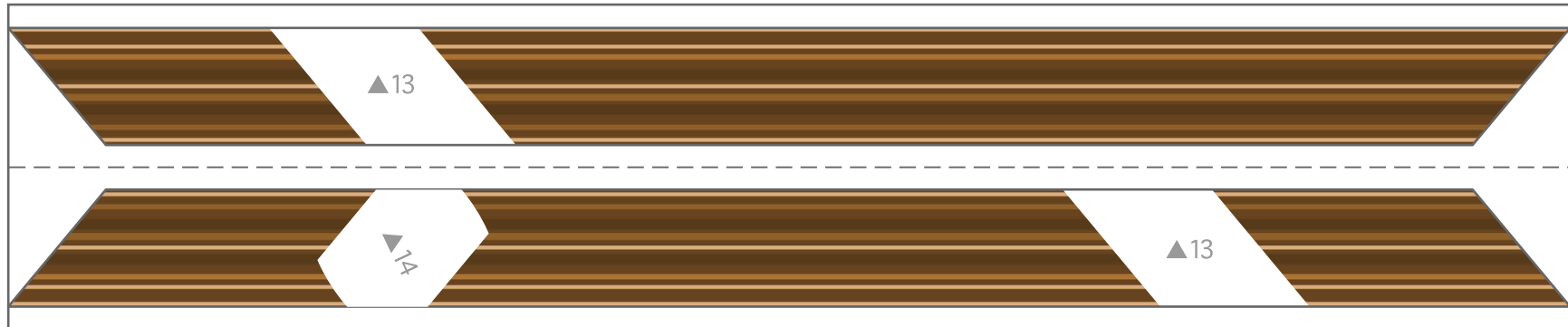


# Canon Gift box D (Brown) : Parts

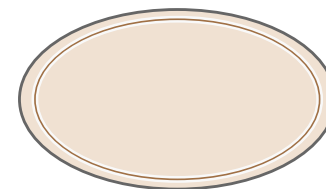
Canon® is a registered trademark of Canon Inc. © Canon Inc. © Yukiko Tanikoshi

## Parts

13



14



# Canon Gift box D (Brown) : Parts

Canon® is a registered trademark of Canon Inc. © Canon Inc. © Yukiko Tanikoshi

## Parts

15

