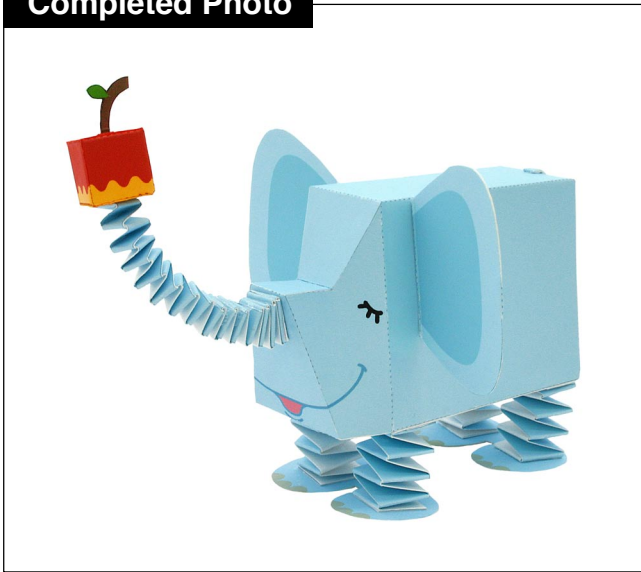


Completed Photo



■ You will need: Scissors, glue, ruler, a used ball-point pen

■ Explanation of symbols: ----- Mountain fold

- - - - - Valley fold

————— Cut line

● Glue tab

■ Assembly tip: Trace along the folds with a ruler and a used pen (no ink) to get a sharper, easier fold.

Caution: This craft requires the use of glue, scissors, and other tools which may be dangerous to young children. Please keep them out of reach of children while you work.

HOW TO MAKE

How to fold the springs

Put one strip over the other and glue them together.

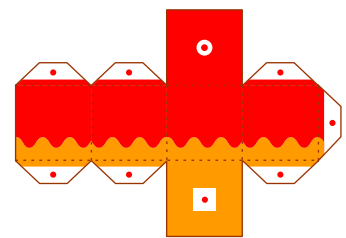
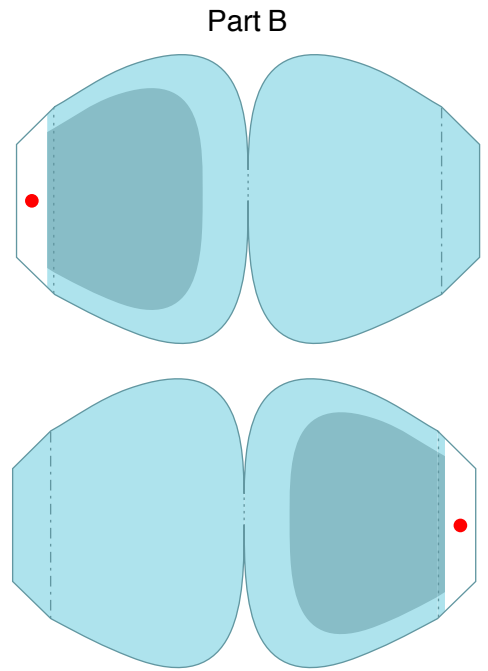
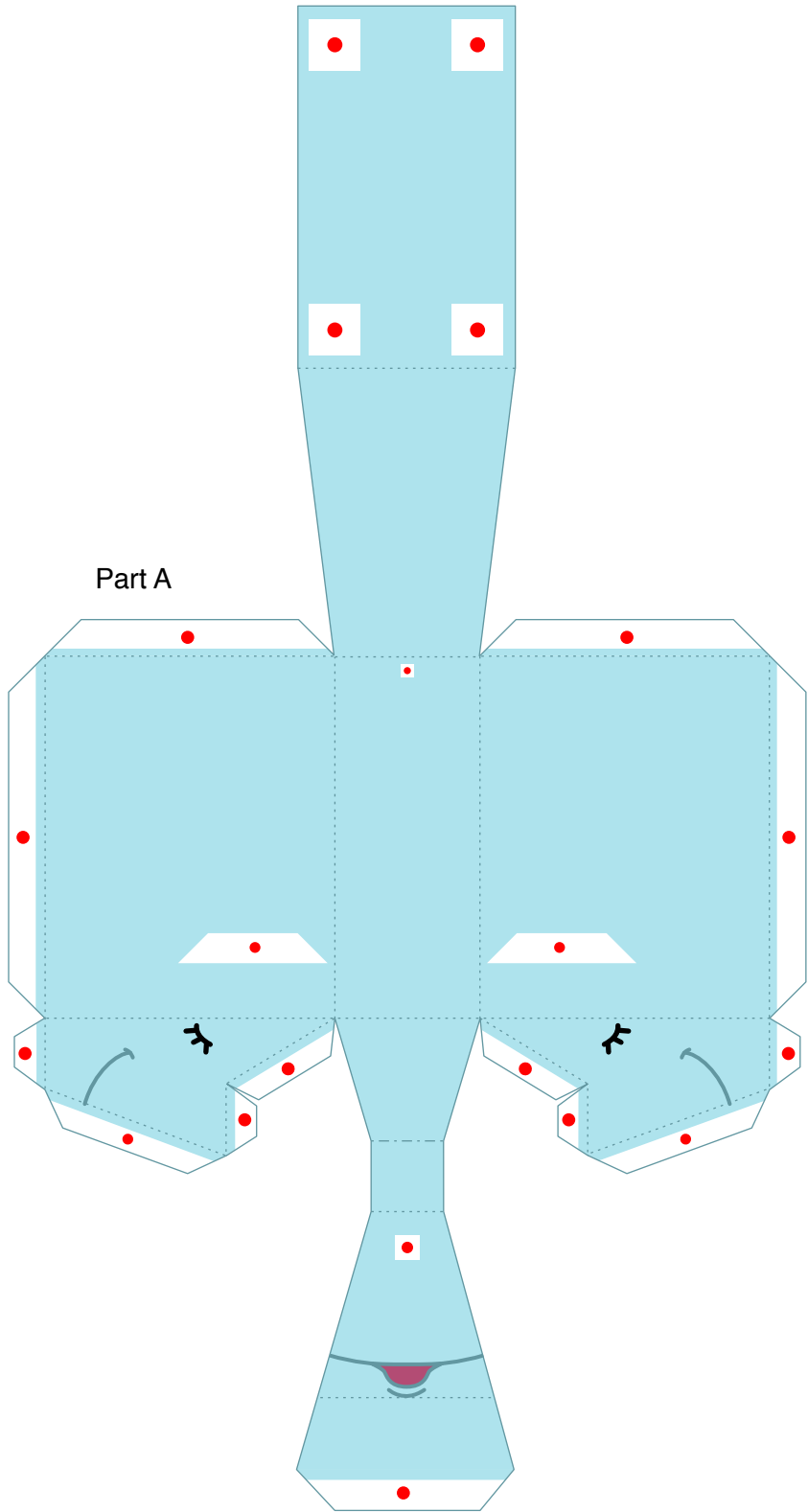
Fold the strip that is beneath the other one.

Likewise, fold the strip that is beneath the other one again. Repeat this step a couple of times. Finally, attach the respective tips together with glue.

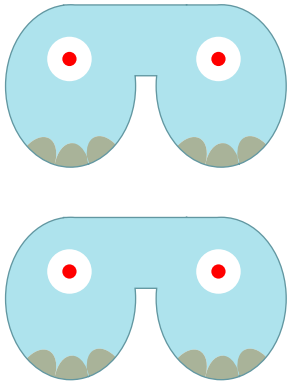
To allow the elephant to stand straight, attach the parts so that they fit snugly with the twisted shapes of the respective springs.

Slightly curve the face part in advance to make the adding of glue easier.

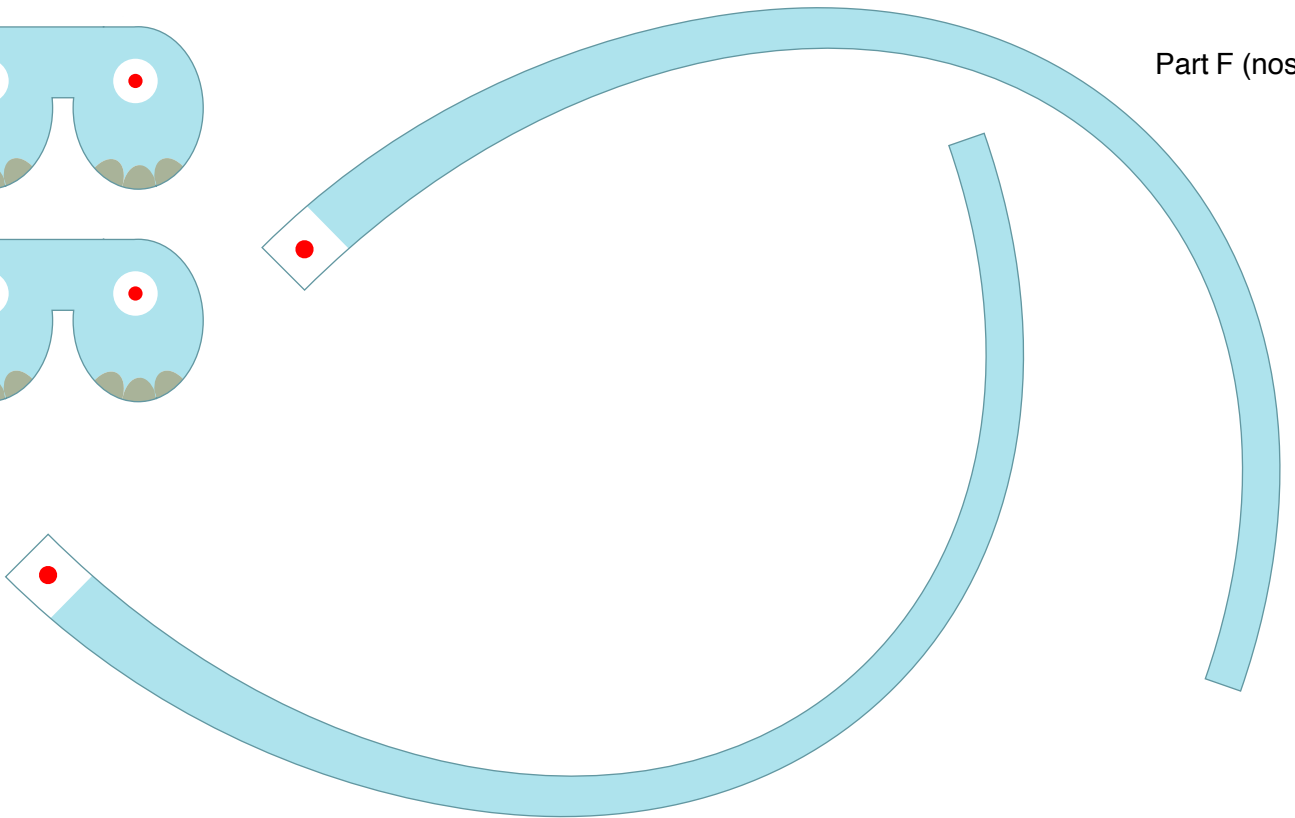
To make the elephant's trunk curve upward, add some glue on the upper portion of the spring in several places.



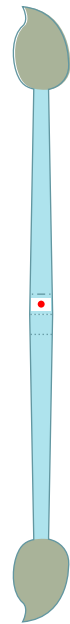
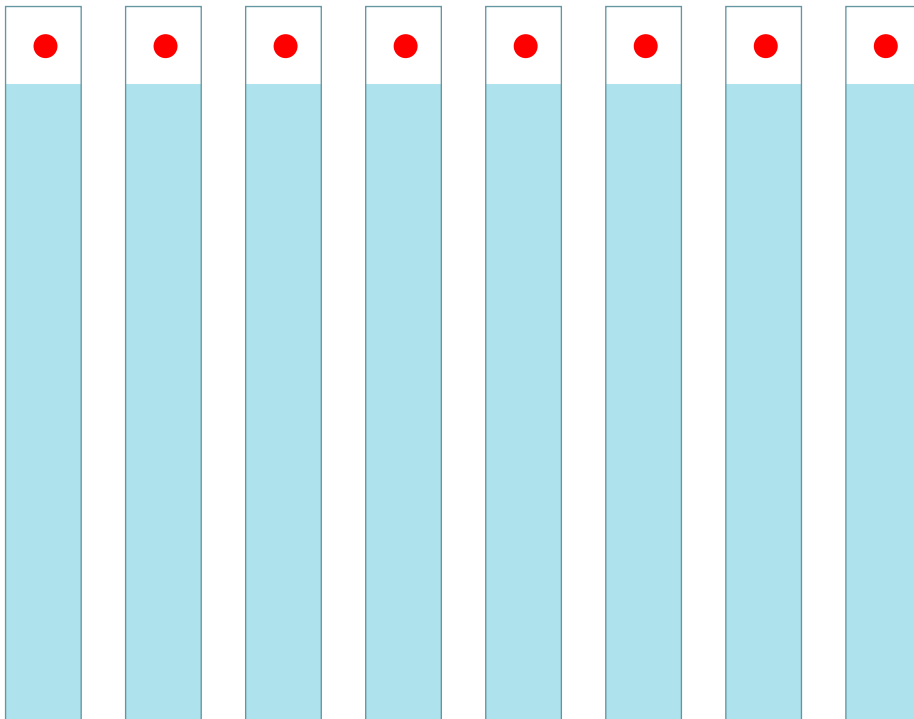
Part E



Part F (nose)



Connector Parts (legs)



Part G