

Completed Photo



■ **You will need:** Scissors, glue, ruler, a used ball-point pen

■ **Explanation of symbols:** ----- Mountain fold

- - - - - Valley fold

————— Cut line

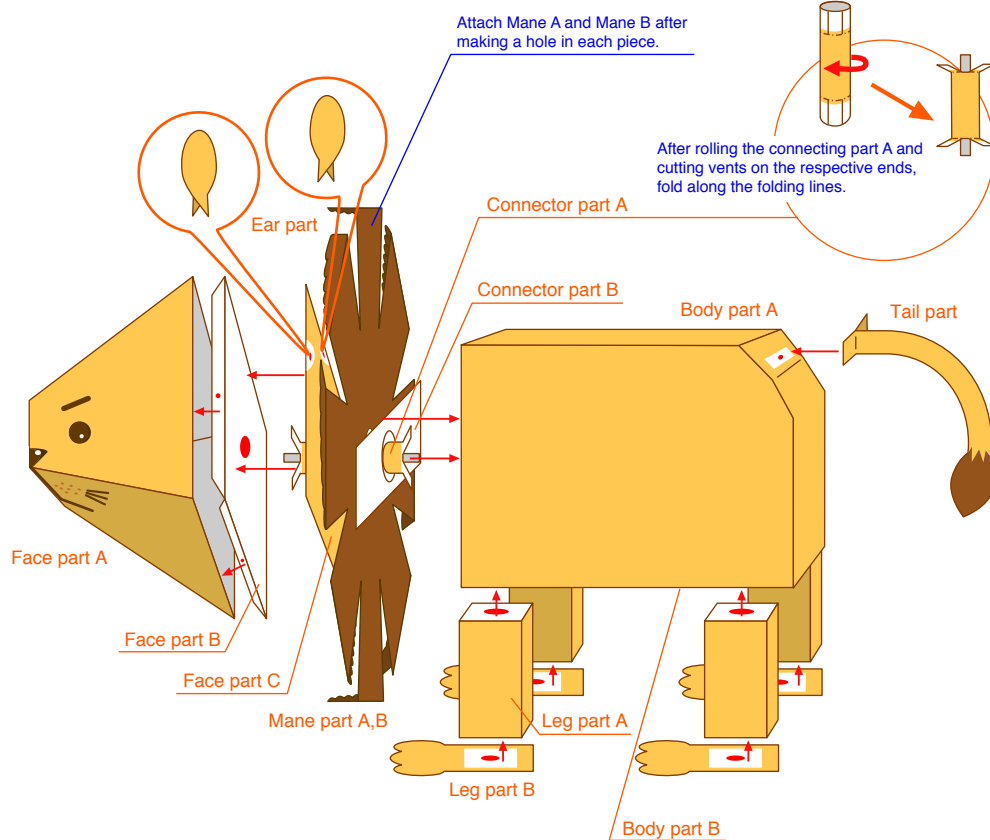
● Glue tab

○ Cut out

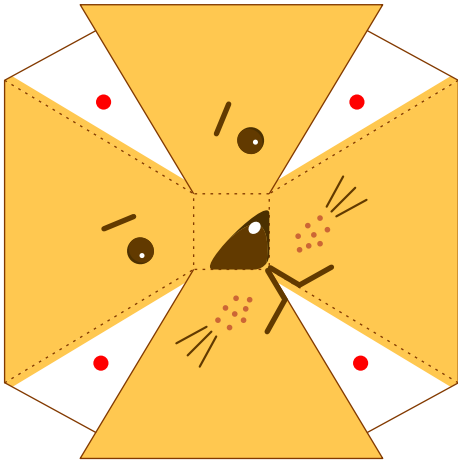
■ **Assembly tip:** Trace along the folds with a ruler and a used pen (no ink) to get a sharper, easier fold.

**Caution:** This craft requires the use of glue, scissors, and other tools which may be dangerous to young children. Please keep them out of reach of children while you work.

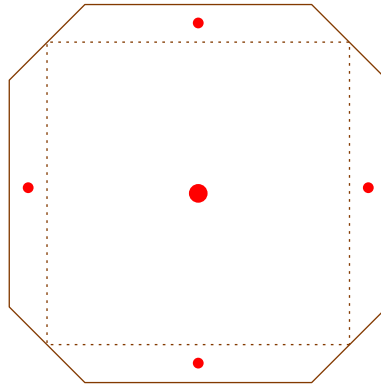
HOW TO MAKE



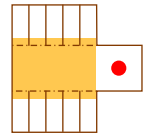
Face part A



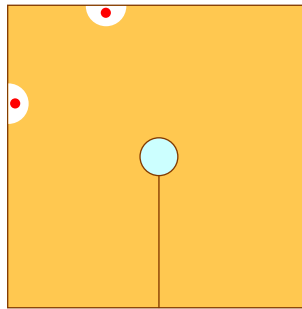
Face part B



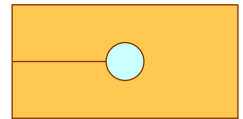
Connector part A



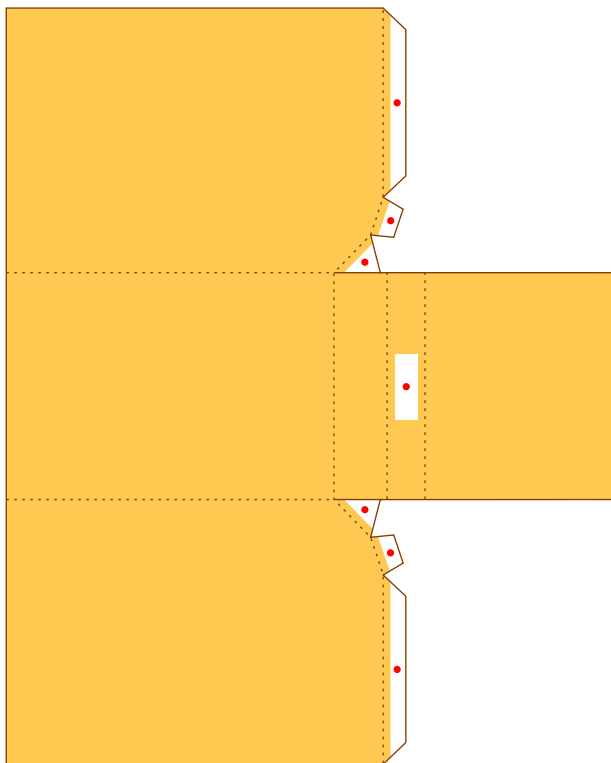
Face part C



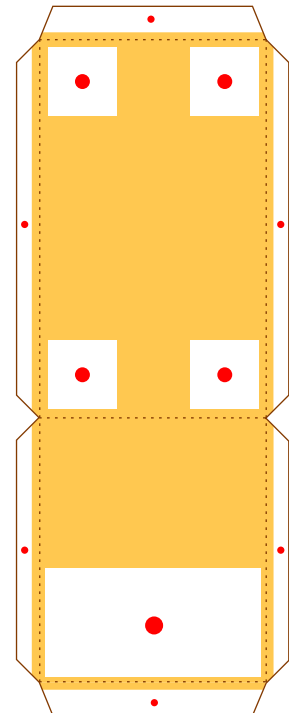
Connector part B



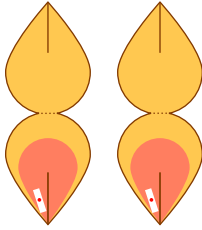
Body part A



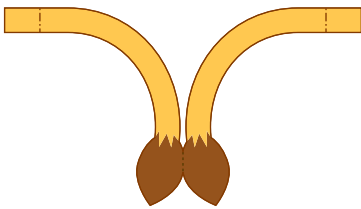
Body part B



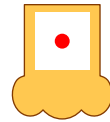
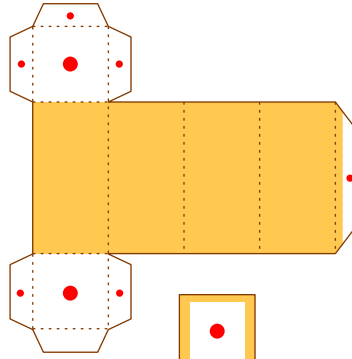
Ear parts



Tail part

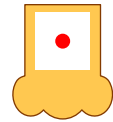
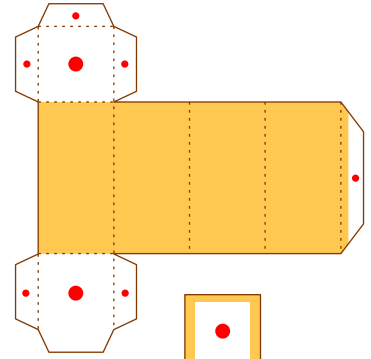


Leg part A



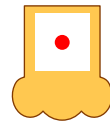
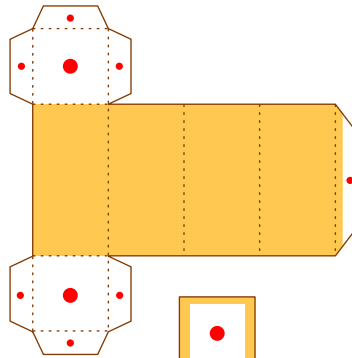
Leg part B

Leg part A



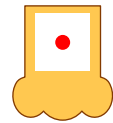
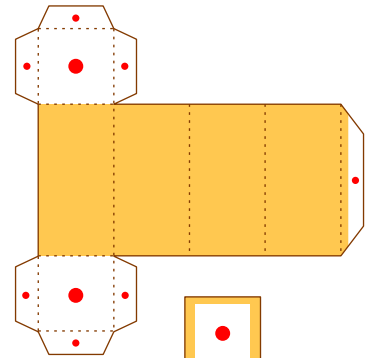
Leg part B

Leg part A



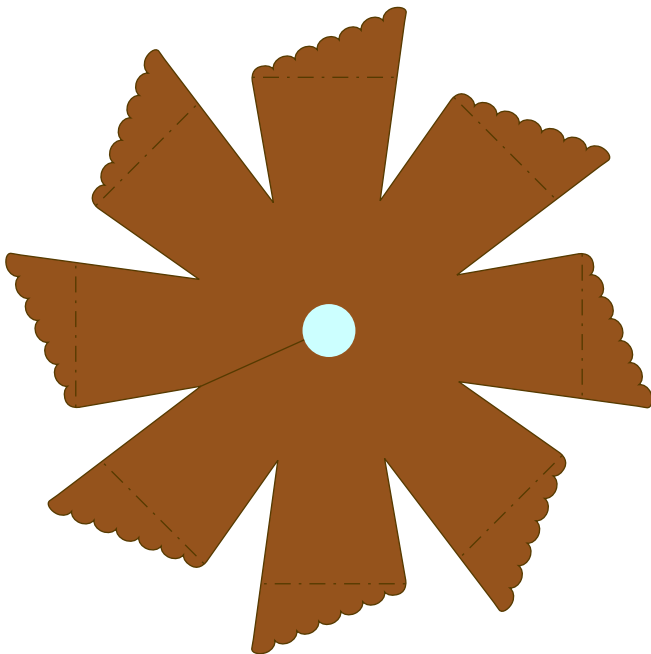
Leg part B

Leg part A



Leg part B

Mane part A



Mane part B

