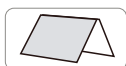


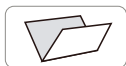
The Paper Elephant! A jumbo model for you to download, printout and make. Actually it is a simple model - not a jumbo one, but it is of an elephant hence the jumbo epithet. Anyway, back to the description: Download the model, print it out onto thin card on your own printer, carefully cut out the pieces, glue them together and, with a couple of hours of your time you'll have your own paper elephant. Rock the body back and forth and the elephant raises his trunk in a delightful way! Print out lots and make yourself a herd. See how I resisted the temptation to use the word paperphant or elepaper. Nice.



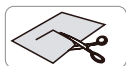
Assembly Instructions



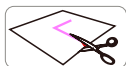
----- Mountain fold
● Make a mountain fold.



- - - - - Valley fold
● Make a valley fold.



———— Scissors line
● Cut along the line.



———— Cut in line
● Make a cut.



A1 Glue spot
● Glue parts with the same number together.

Tools and Materials



Scissors, set square, glue (such as woodwork glue), metal rod, spatula, a used pen, toothpicks, tweezers (useful for handling small parts).

Assembly Tip



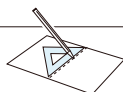
Before gluing, crease the paper along mountain fold and valley fold lines and make sure rounded sections are nice and stiff.

Caution



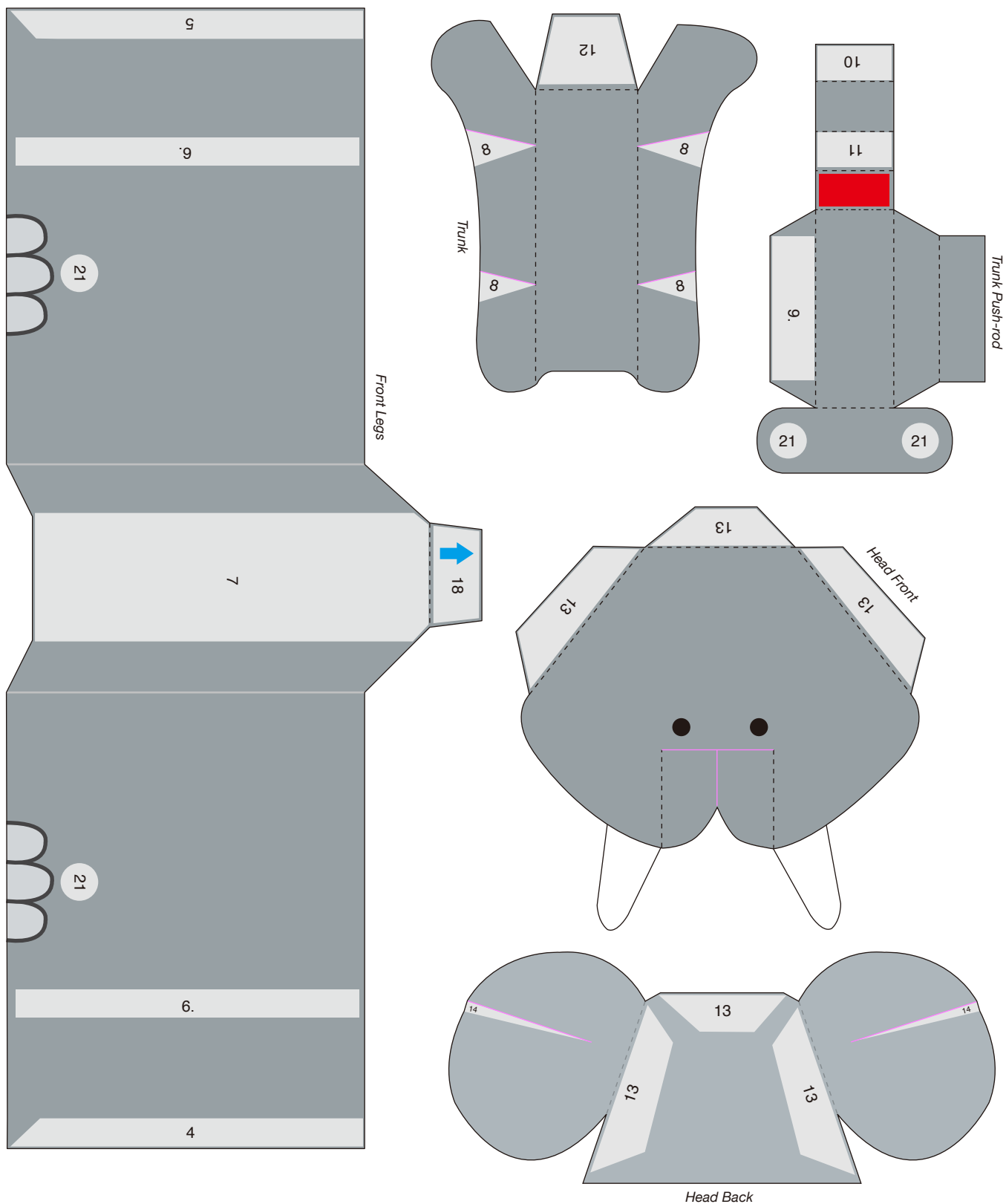
This craft requires the use of glue, scissors, tweezers, and other tools which may be dangerous to young children. Please keep them out of reach of children while you work.

Handy Hints



Trace along the folds with a used pen (no-ink) to get a sharp, easier fold.

● Before assembling: Use spray adhesive to attach page 04 to the back of this paper. *Be careful not to put it upside down. We recommend using thick matte photo paper for the front sides.



● Before assembling: Use spray adhesive to attach page 05 to the back of this paper. *Be careful not to put it upside down.
We recommend using thick matte photo paper for the front sides.

