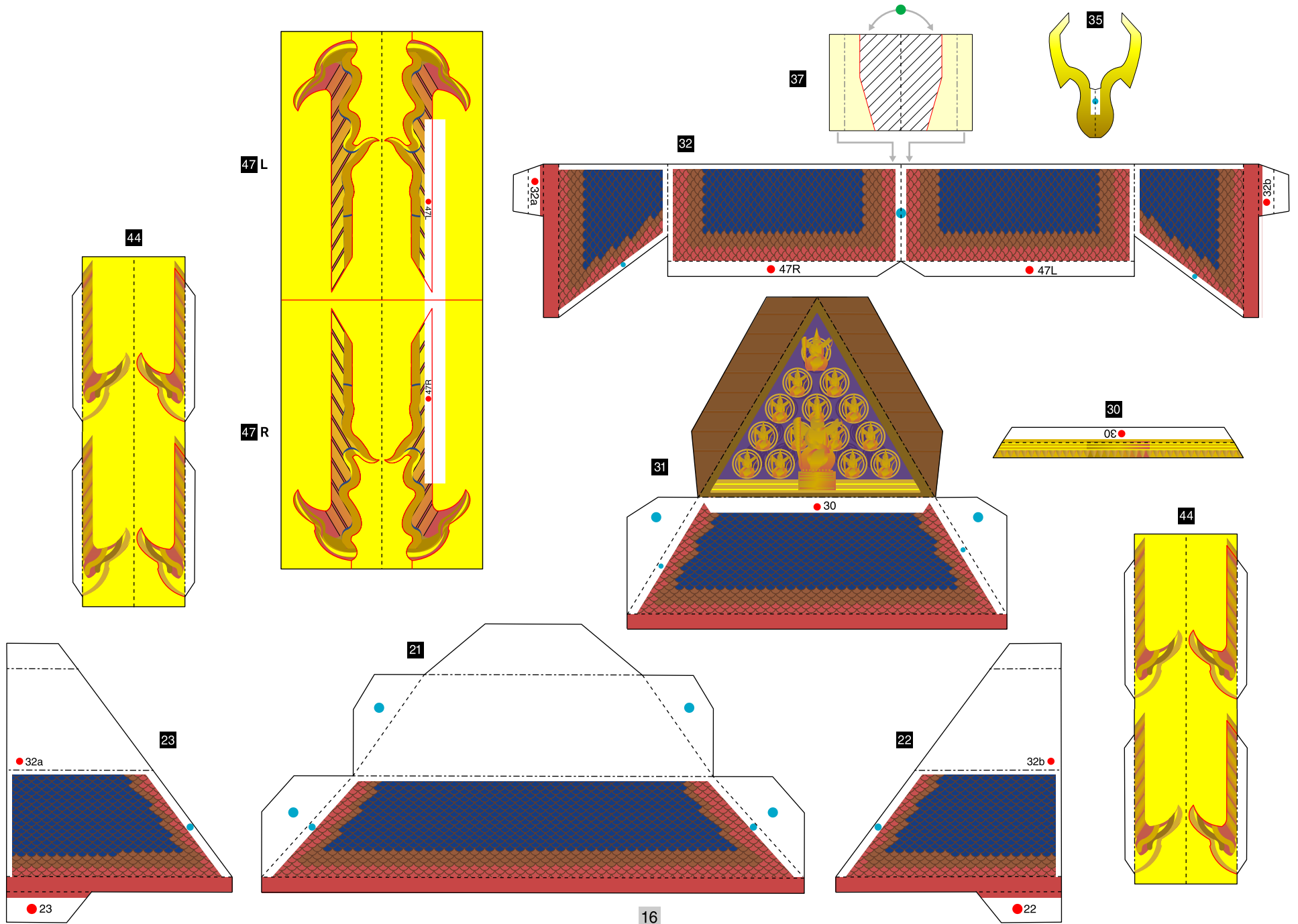


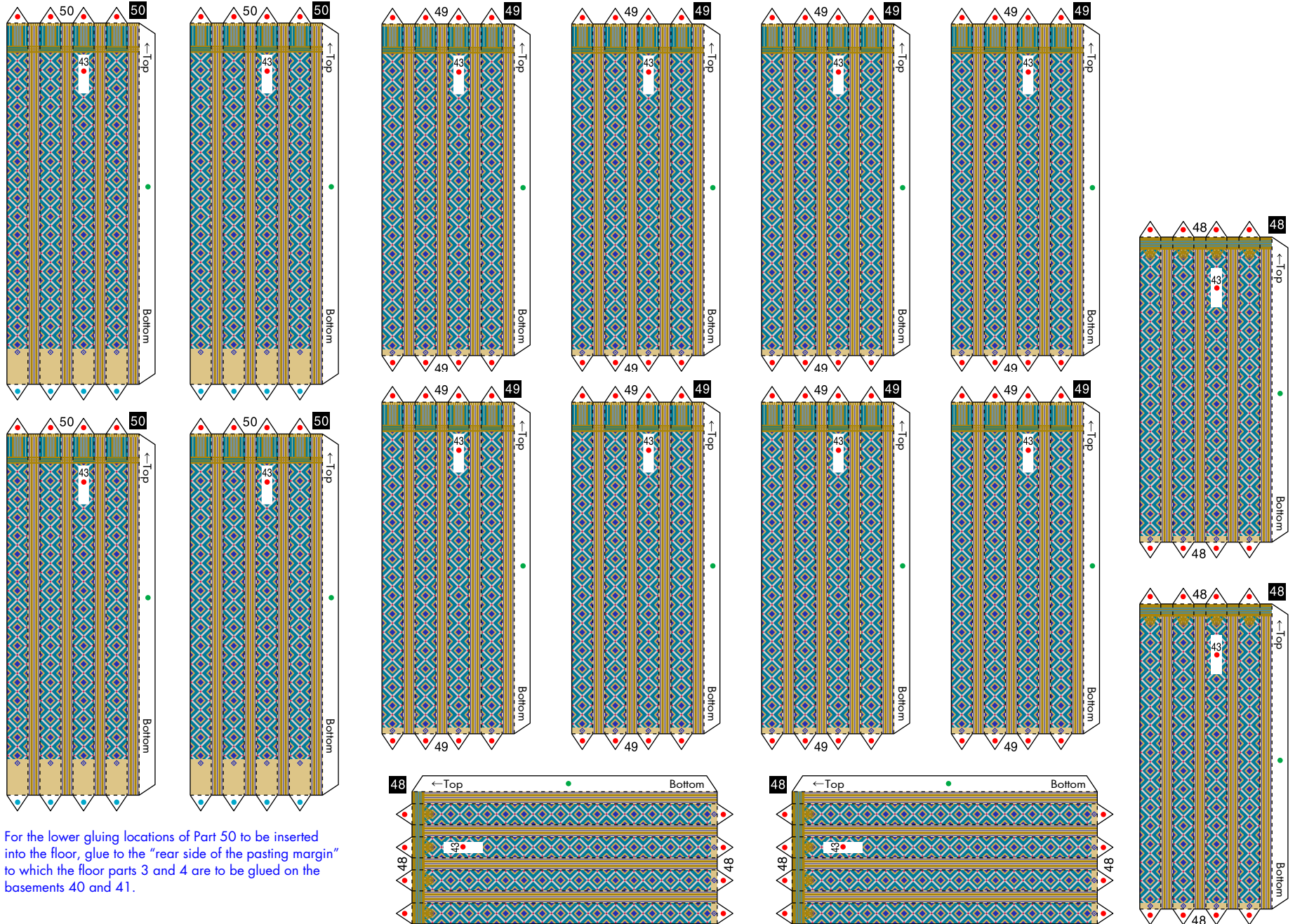
# Temple of the Emerald, Thai : Pattern

©Canon Inc. ©K.K./N.N.



# Temple of the Emerald, Thai : Pattern

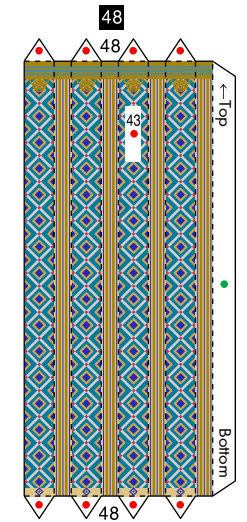
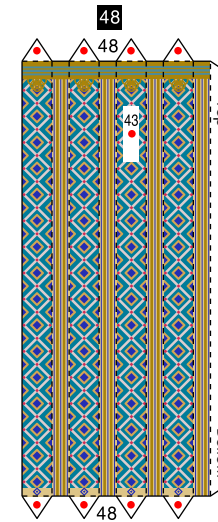
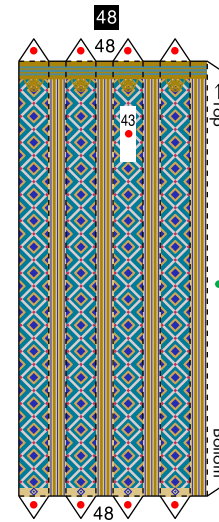
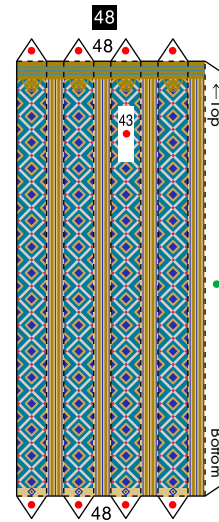
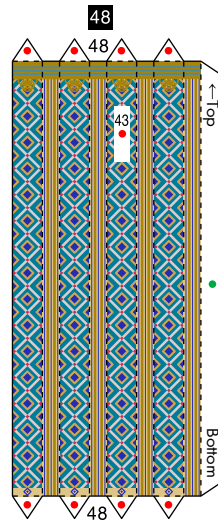
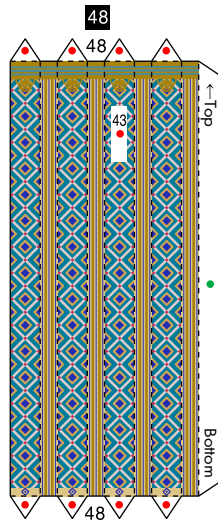
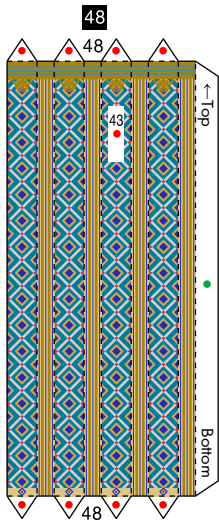
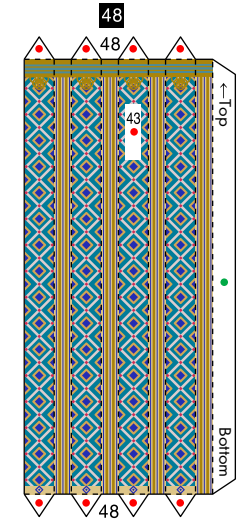
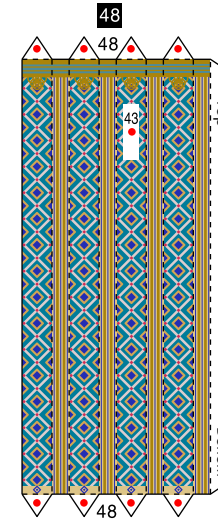
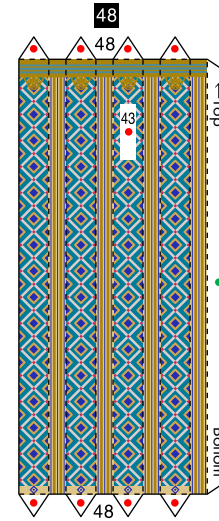
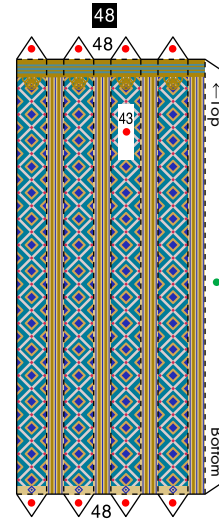
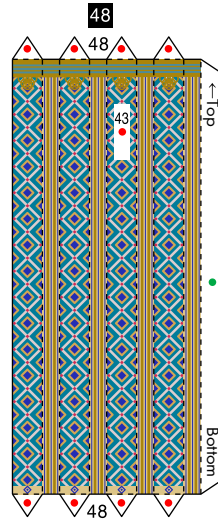
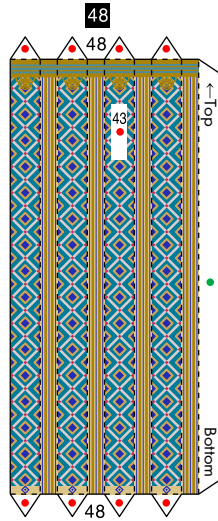
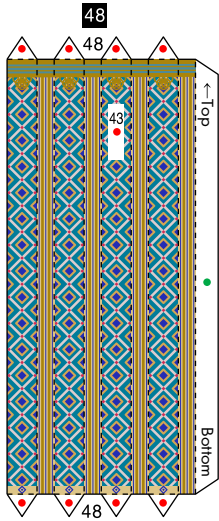
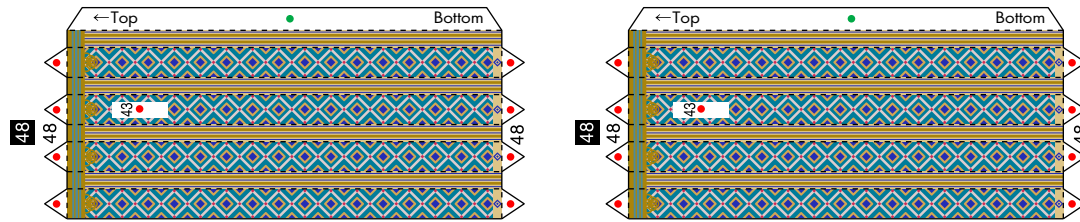
©Canon Inc. ©K.K./N.N.



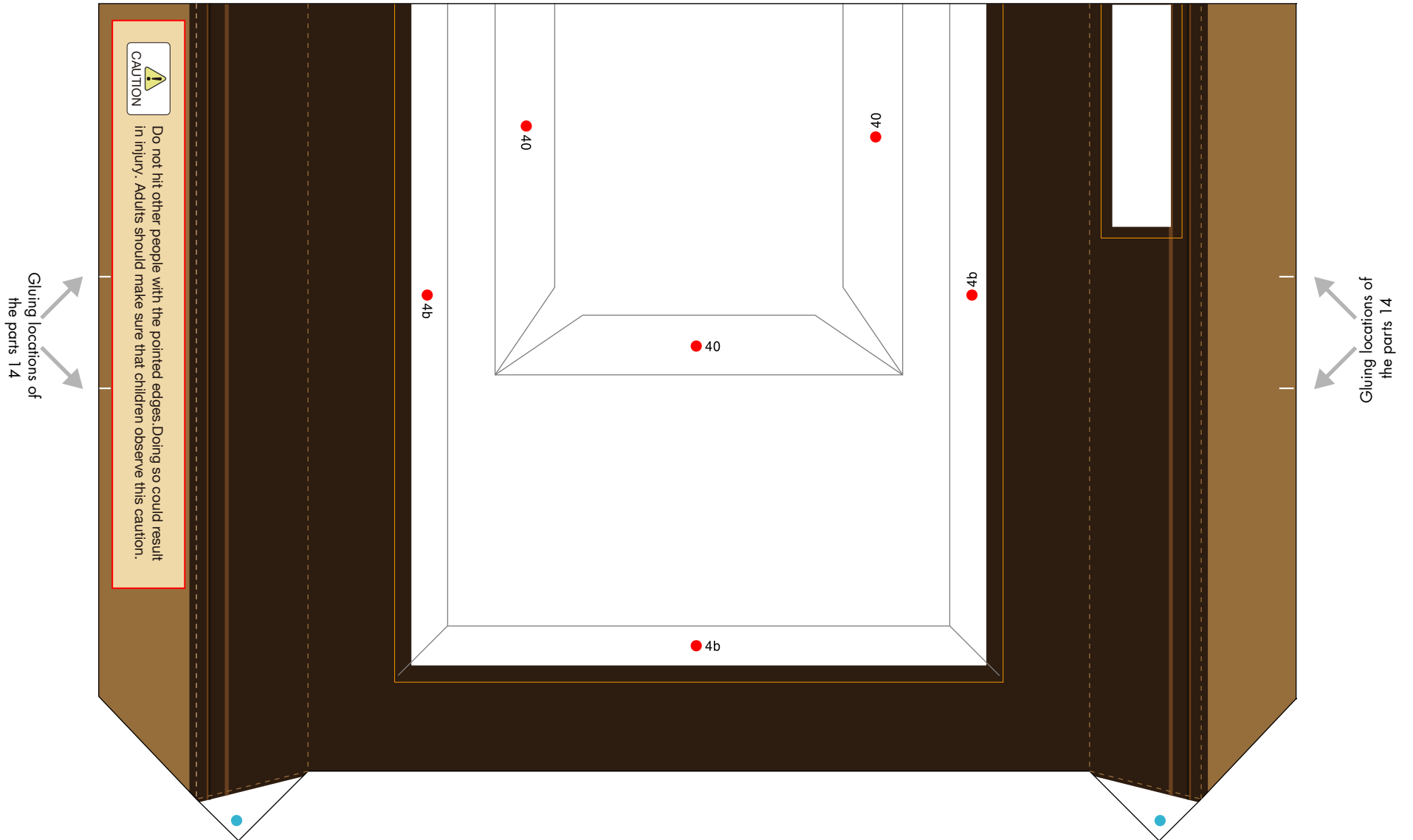
For the lower gluing locations of Part 50 to be inserted into the floor, glue to the "rear side of the pasting margin" to which the floor parts 3 and 4 are to be glued on the basements 40 and 41.

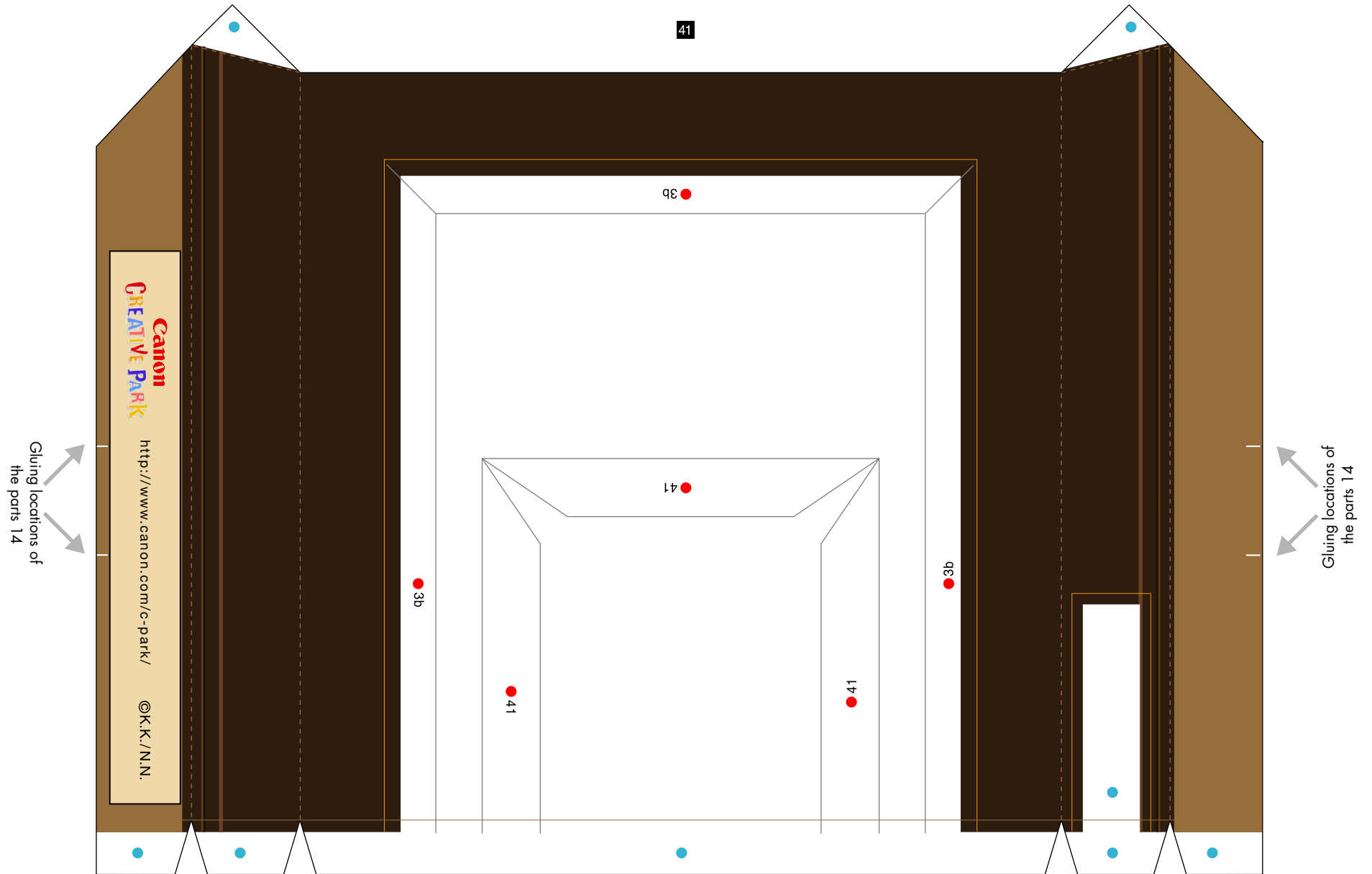
# Temple of the Emerald, Thai : Pattern

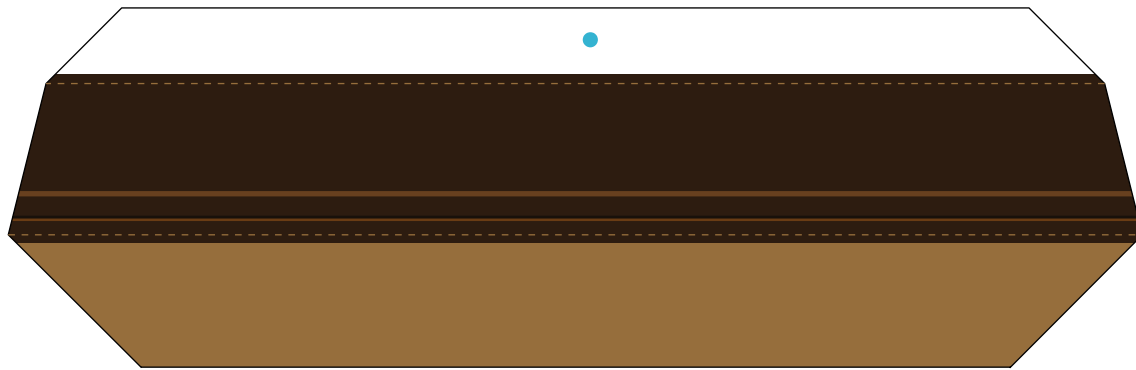
©Canon Inc. ©K.K./N.N.



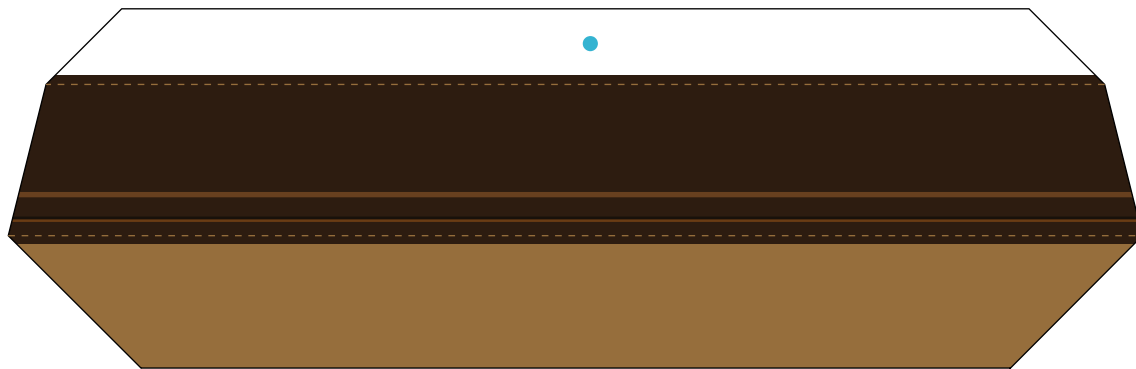
40





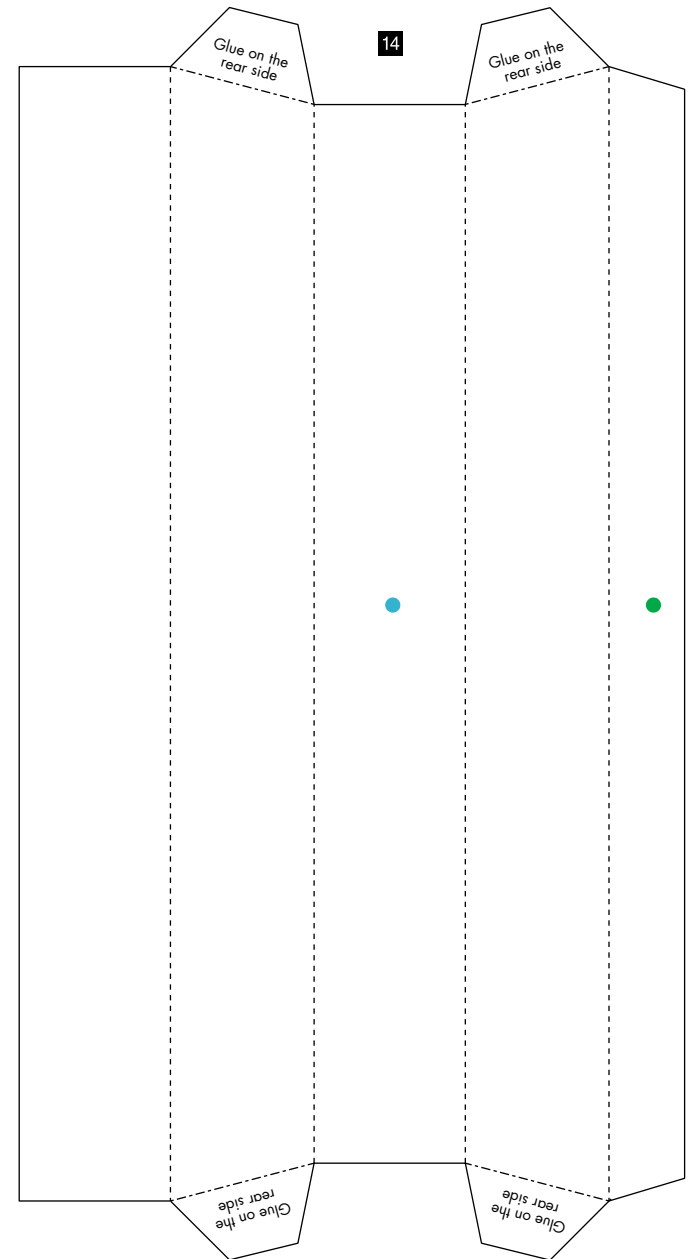


42



16

Temple of the Emerald  
Bangkok, Thai



14