

Ammonite



Ammonite

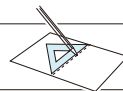
Scientific name: Subclass Ammonoidea

Ammonites were creatures with flat shells that had a regular, helically-spiraled shape, that existed on Earth in prehistoric times, having evolved from nautiluses. Discoveries have shown that they ranged in size from a few centimeters to as big as about 1.7 meters in diameter. Ammonites are not related to shellfish; they were soft-bodied mollusks just like squid and octopuses. As they are now extinct, we can only learn about them from fossils. They were generated on the Earth from the end of the Paleozoic era's Silurian period (around 420 million years ago) to the middle of the Devonian period (around 380 million years ago). They inhabited the oceans around the world until the Cretaceous period of the Mesozoic era (around 65million years ago), meaning the species existed for a total of around 350 million years. The inside of an ammonite's spiral-shaped shell is divided into chambers, and the creature's soft body occupied the largest chamber at the end of the spiral. It is believed that the rest of the chambers contained bodily fluids and gas, and by adjusting the amounts of these the creature could float and sink through the water. The ammonite's biggest predator was the mosasaurus, a large, crocodile-like dinosaur, and some ammonite fossils have been uncovered with mosasaurus teeth marks on them. Take this paper craft model off its stand, and you can see the internal structure of the ammonite shell. You can learn more about the ammonite from the panel, which contains a timeline of when ammonites were alive, a diagram comparing their sizes, and an artist's impression of what they may have looked like.

- Parts sheet: 9 pages
- Number of parts: ammonite 7 parts / rock 10 parts / display stand 7 parts
- Assembly Instructions: 5 pages

\*This model was designed for Papercraft and may differ from the original in some respects.

Handy Hints



Trace along the folds with a used pen (no-ink) to get a sharp, easier fold.

Tools and Materials



Scissors, set square, glue (such as woodwork glue), metal rod, spatula, a used pen, toothpicks, tweezers (useful for handling small parts).

Assembly Tip

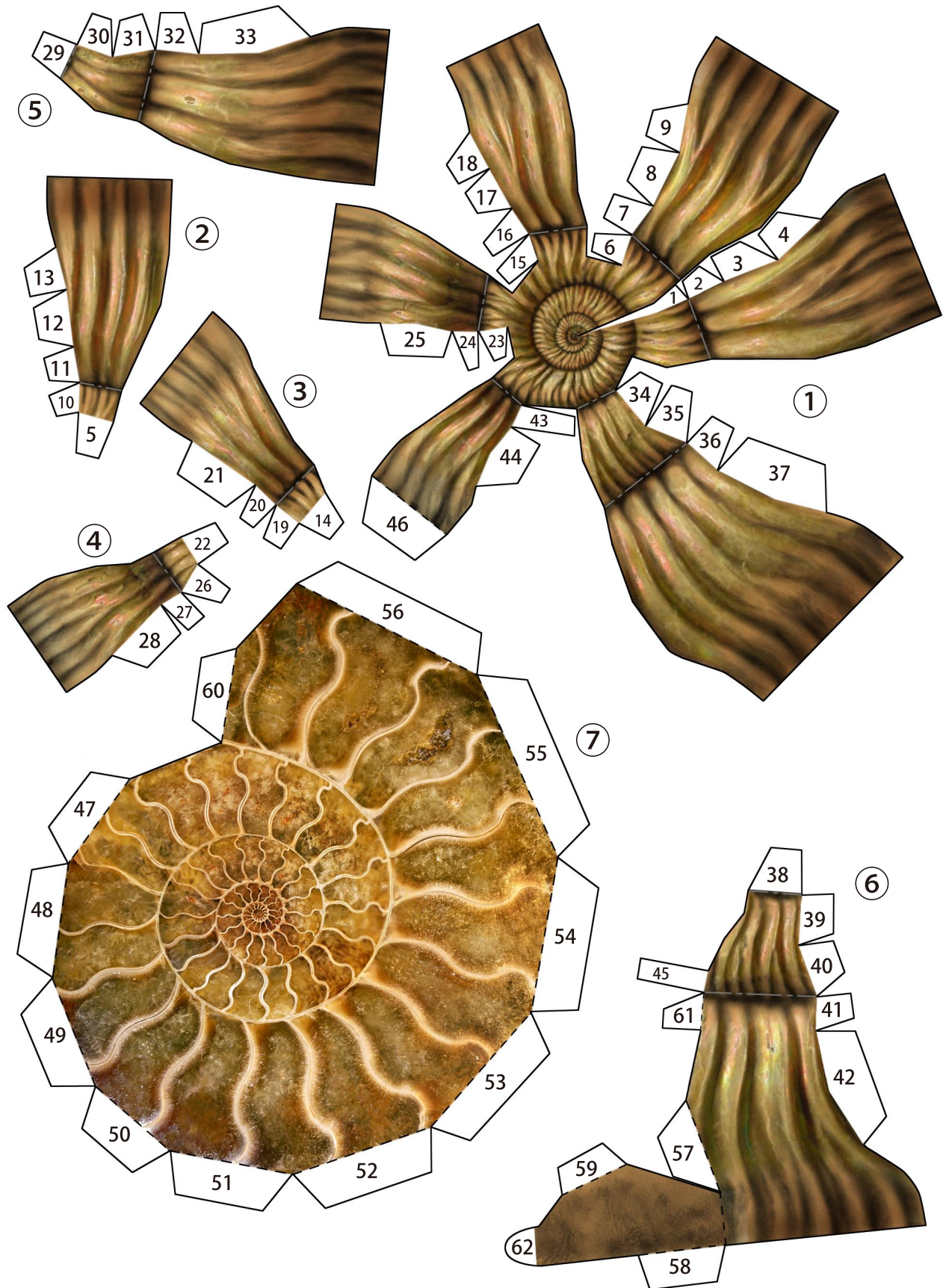


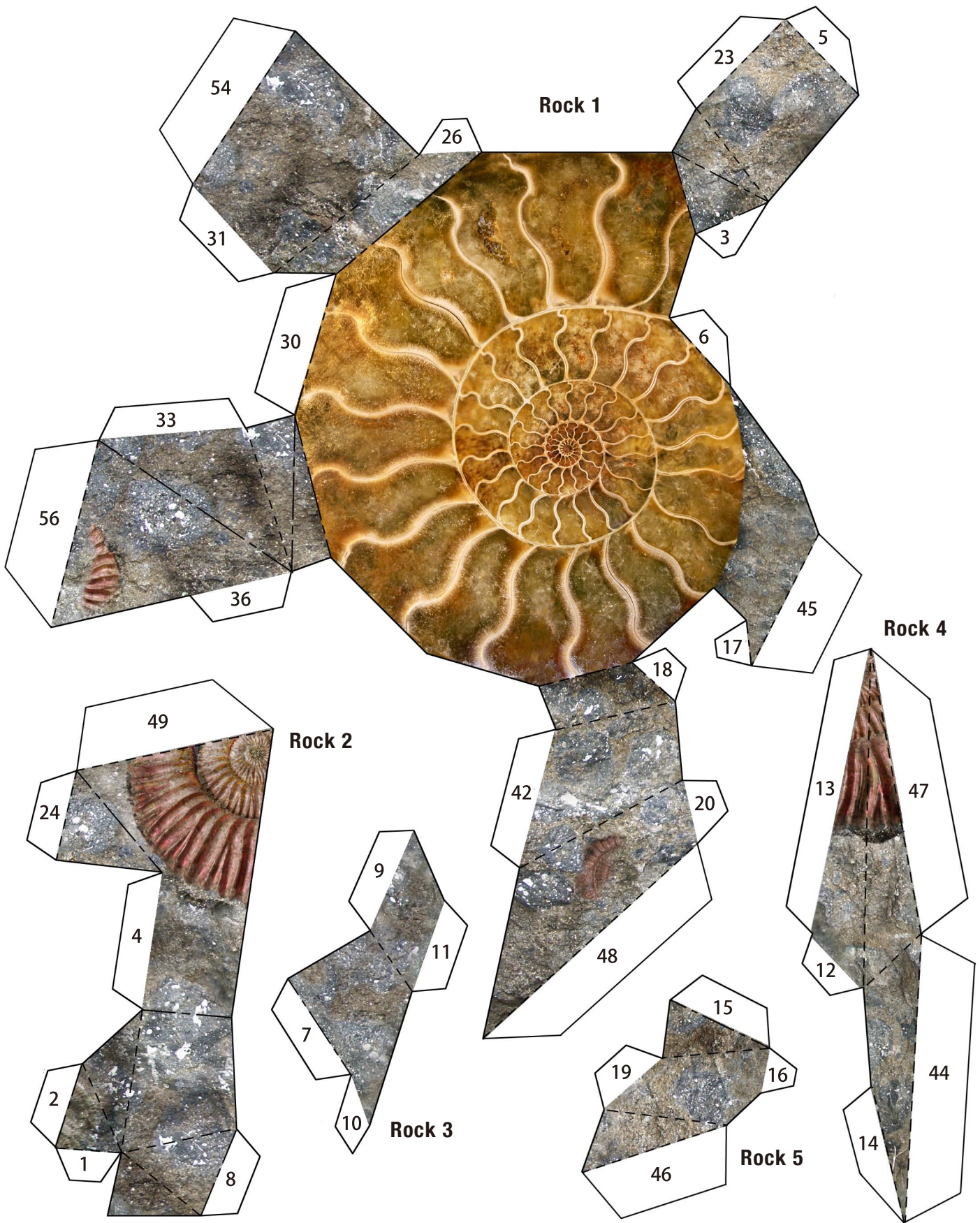
Before gluing, crease the paper along mountain fold and valley fold lines and make sure rounded sections are nice and stiff.

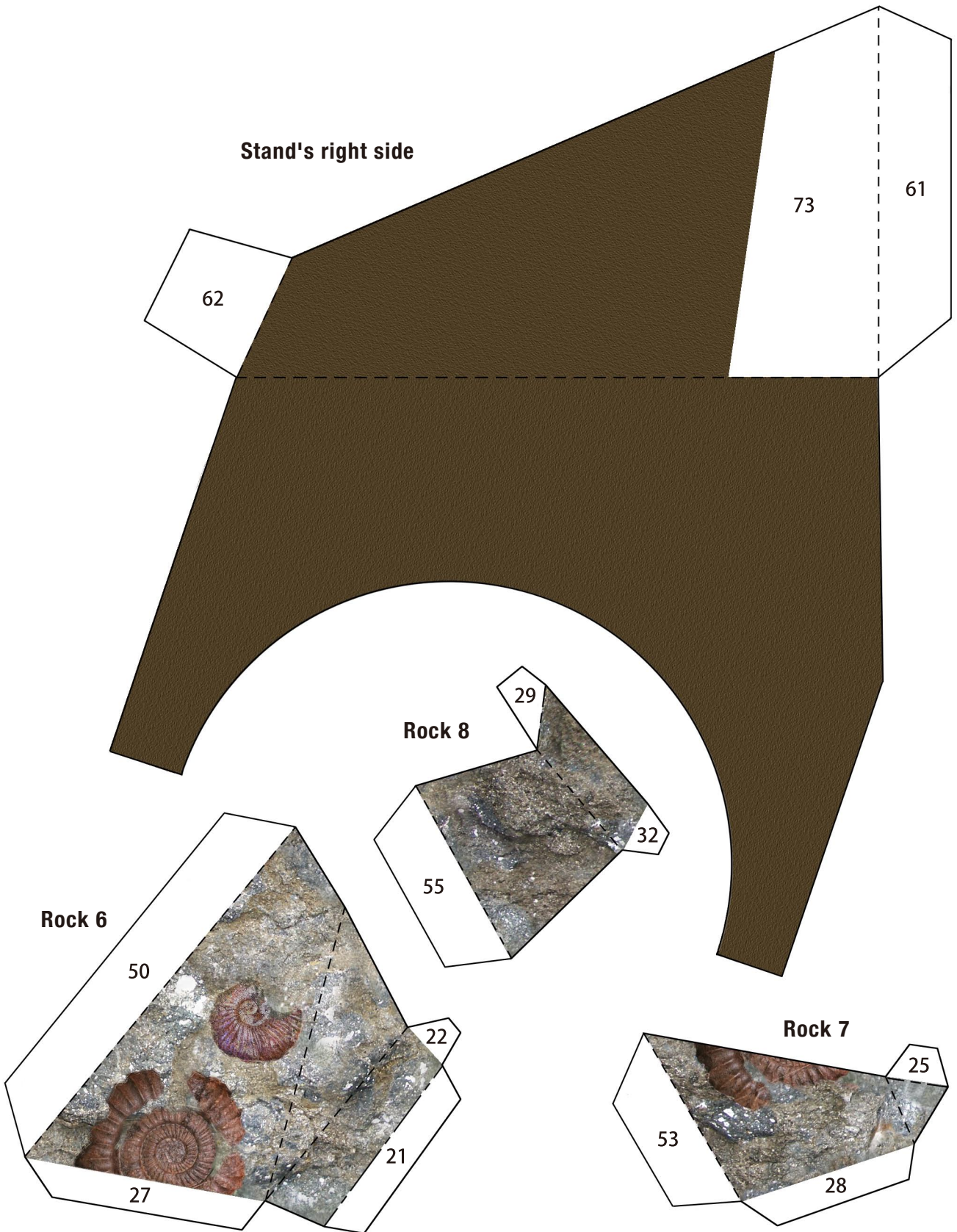
Caution

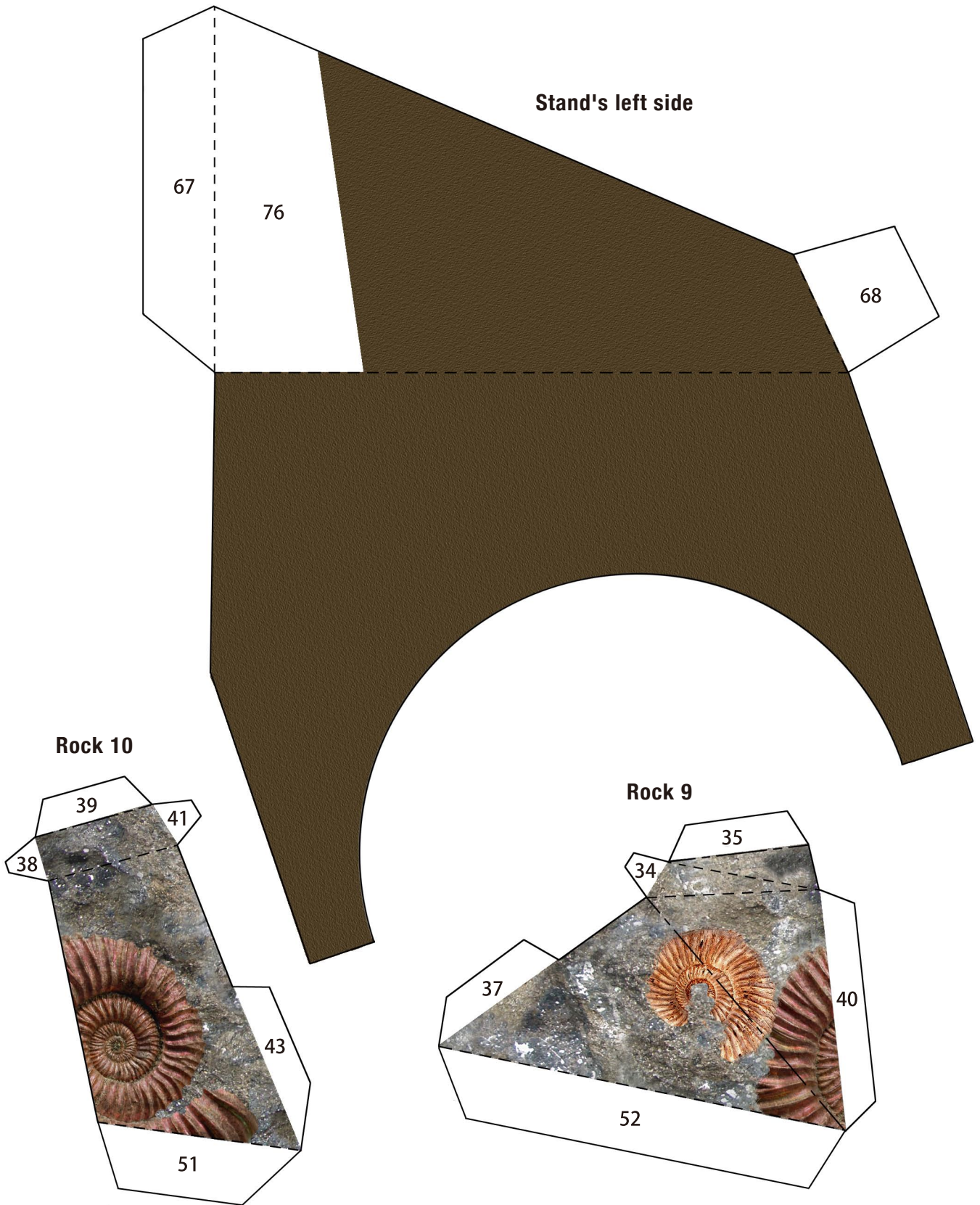


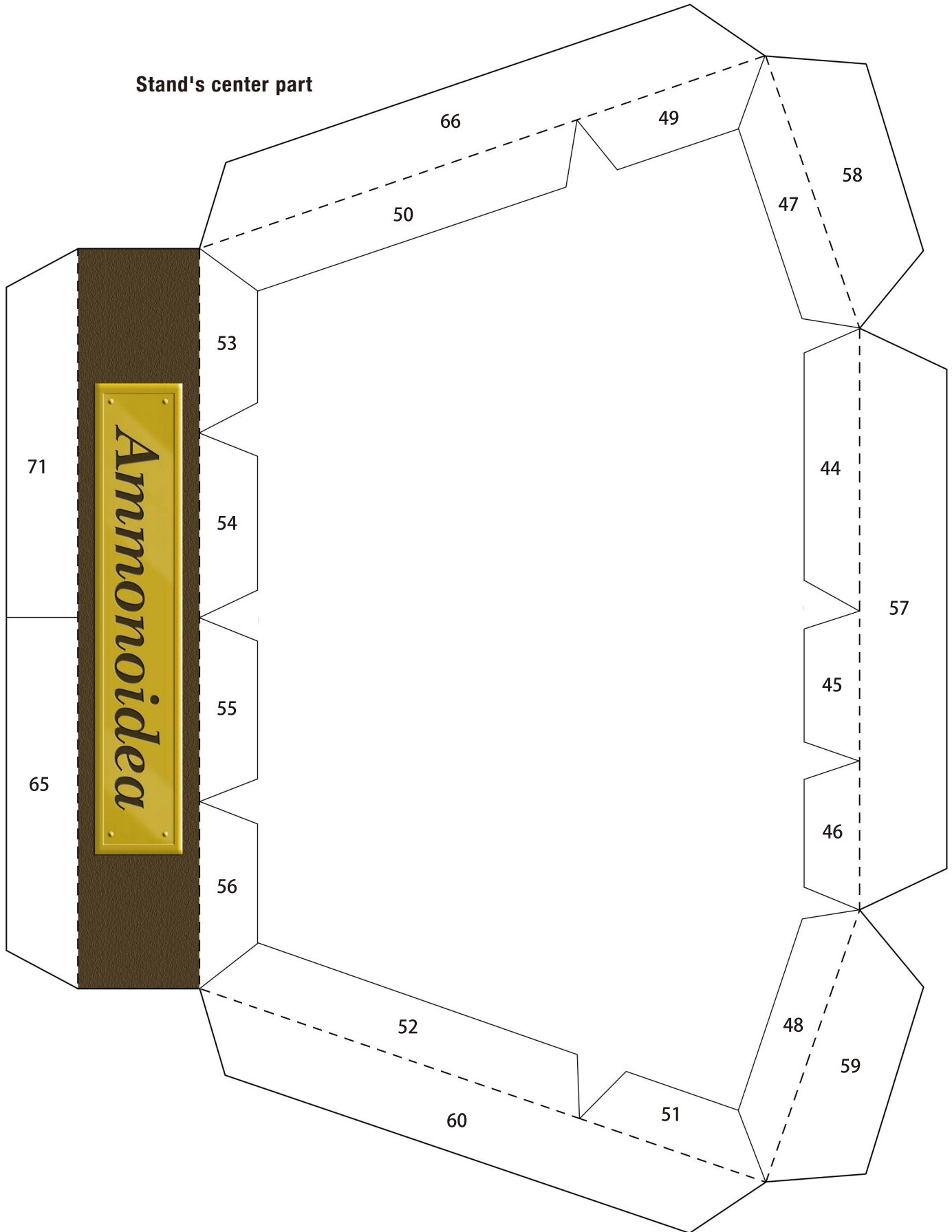
This craft requires the use of glue, scissors, tweezers, and other tools which may be dangerous to young children. Please keep them out of reach of children while you work.



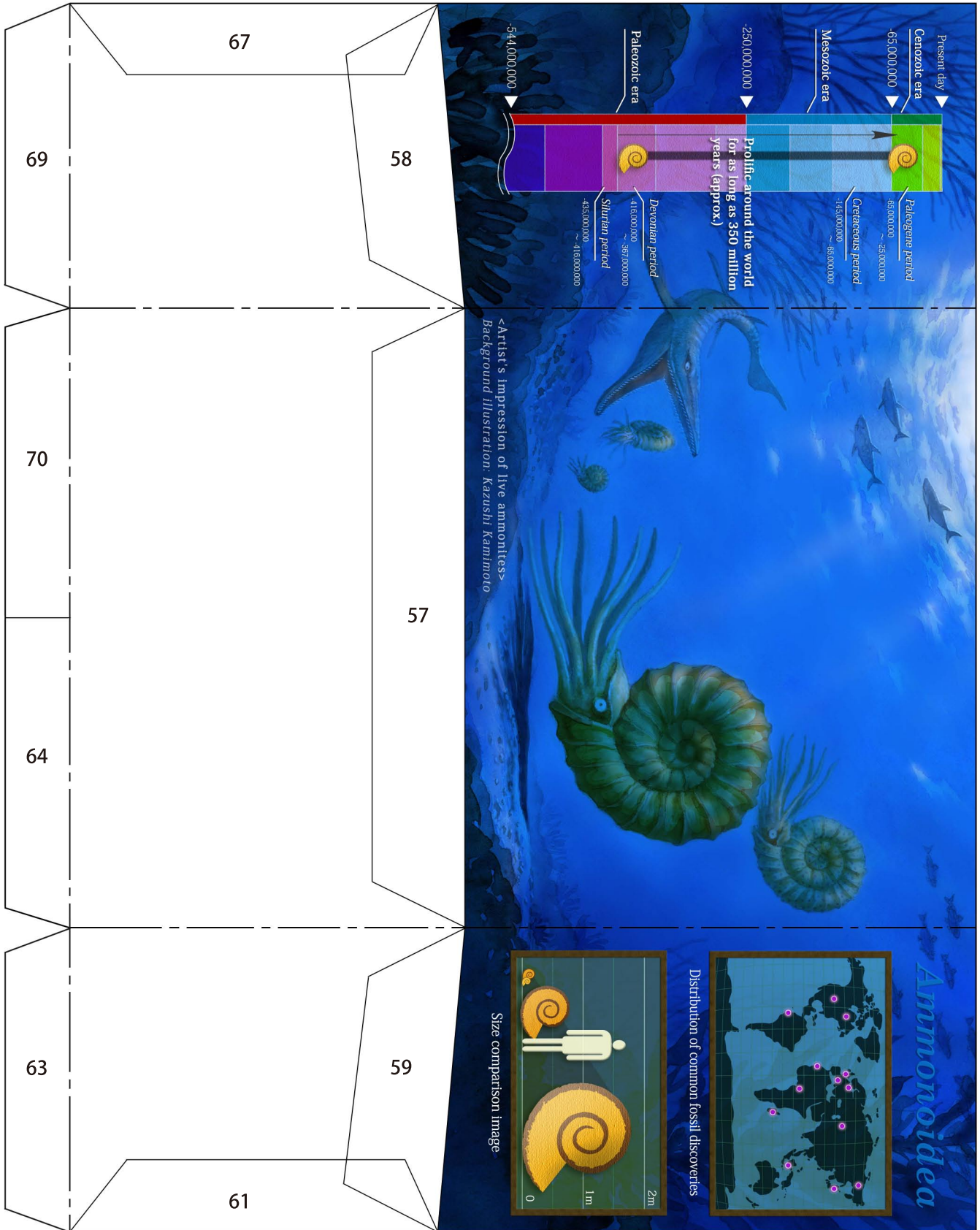


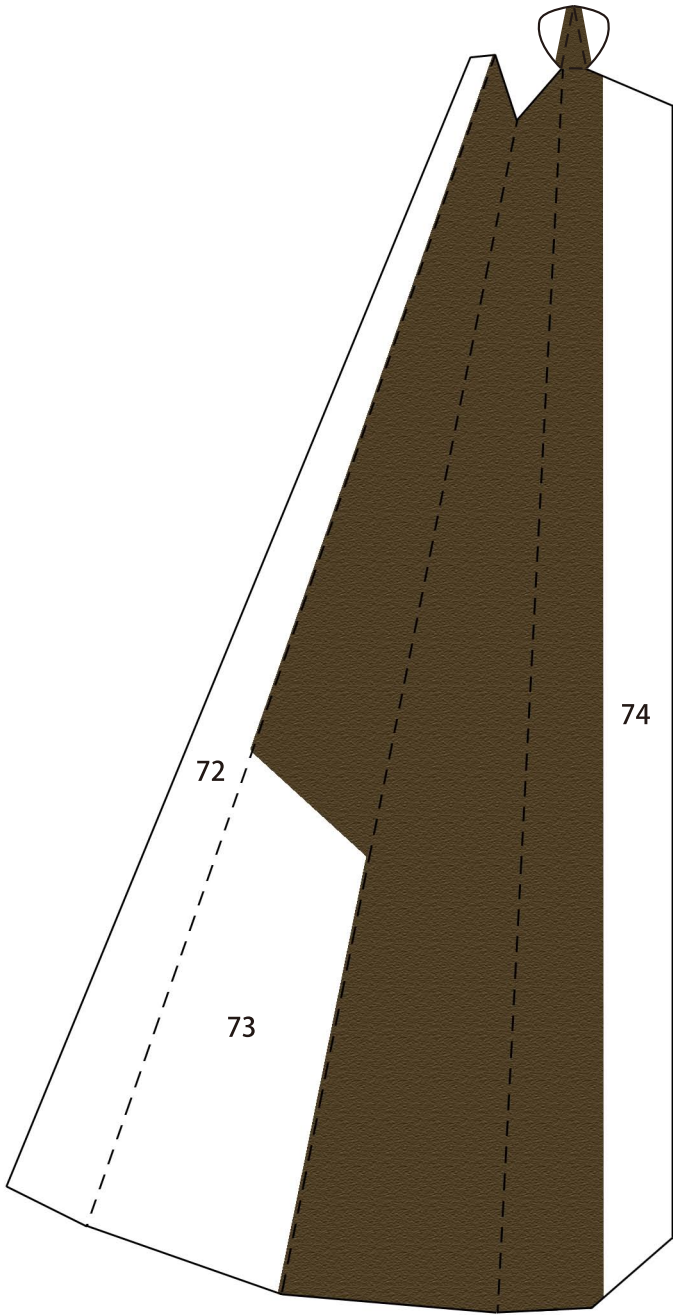




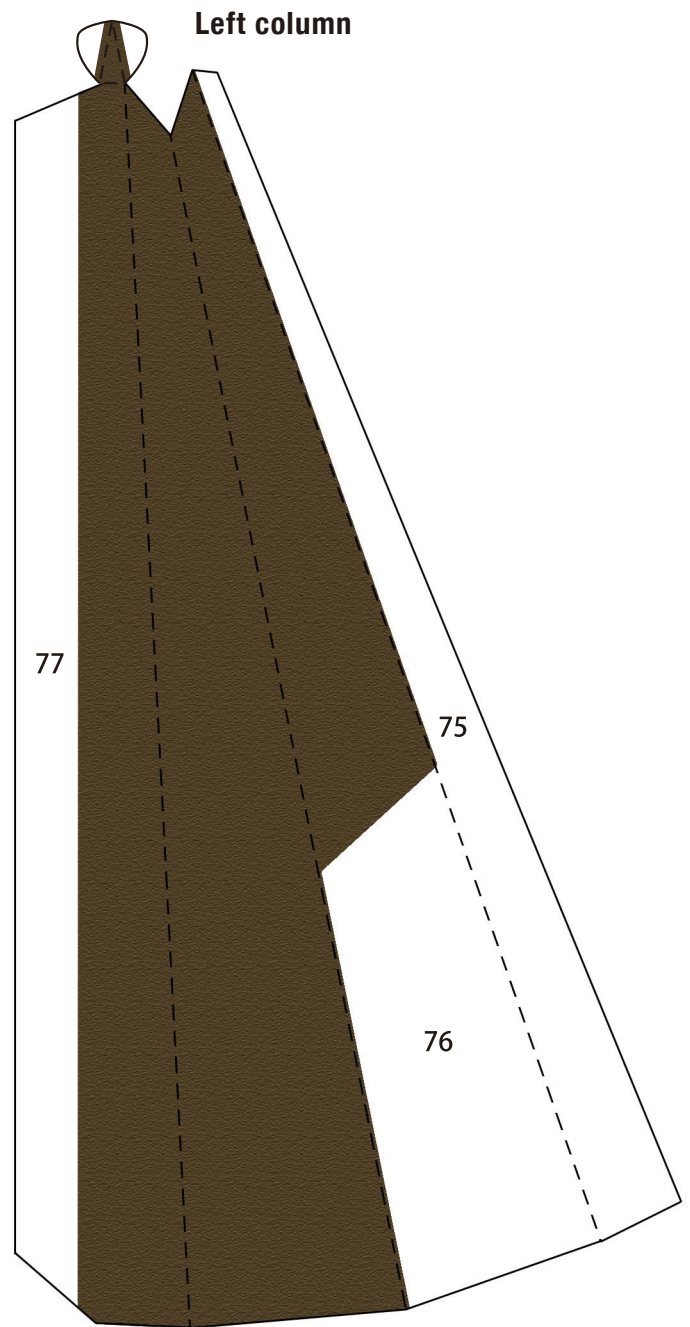


Panel front face





Right column



Left column



Panel back face

**Ammonite**  
Scientific name: Subclass Ammonoidea

Ammonites were creatures with flat shells that had a regular, helically-spiraled shape, that existed on Earth in prehistoric times, having evolved from nautiluses. Discoveries have shown that they ranged in size from a few centimeters to as big as about 1.7 meters in diameter. Ammonites are not related to shellfish; they were soft-bodied mollusks just like squid and octopuses. As they are now extinct, we can only learn about them from fossils. They were generated on the Earth from the end of the Paleozoic era's Silurian period (around 420 million years ago) to the middle of the Devonian period (around 380 million years ago). They inhabited the oceans around the world until the Cretaceous period of the Mesozoic era (around 65million years ago), meaning the species existed for a total of around 350 million years. The inside of an ammonite's spiral-shaped shell is divided into chambers, and the creature's soft body occupied the largest chamber at the end of the spiral. It is believed that the rest of the chambers contained bodily fluids and gas, and by adjusting the amounts of these the creature could float and sink through the water. The ammonites' biggest predator was the mosasaurus, a large, crocodile-like dinosaur, and some ammonite fossils have been uncovered with mosasaurus teeth marks on them. Take this paper craft model off its stand, and you can see the internal structure of the ammonite shell. You can learn more about the ammonite from the panel, which contains a timeline of when ammonites were alive, a diagram comparing their sizes, and an artist's impression of what they may have looked like.

**Ammonite**  
Scientific name: Subclass Ammonoidea

Ammonites were creatures with flat shells that had a regular, helically-spiraled shape, that existed on Earth in prehistoric times, having evolved from nautiluses. Discoveries have shown that they ranged in size from a few centimeters to as big as about 1.7 meters in diameter. Ammonites are not related to shellfish; they were soft-bodied mollusks just like squid and octopuses. As they are now extinct, we can only learn about them from fossils. They were generated on the Earth from the end of the Paleozoic era's Silurian period (around 420 million years ago) to the middle of the Devonian period (around 380 million years ago). They inhabited the oceans around the world until the Cretaceous period of the Mesozoic era (around 65million years ago), meaning the species existed for a total of around 350 million years. The inside of an ammonite's spiral-shaped shell is divided into chambers, and the creature's soft body occupied the largest chamber at the end of the spiral. It is believed that the rest of the chambers contained bodily fluids and gas, and by adjusting the amounts of these the creature could float and sink through the water. The ammonites' biggest predator was the mosasaurus, a large, crocodile-like dinosaur, and some ammonite fossils have been uncovered with mosasaurus teeth marks on them. Take this paper craft model off its stand, and you can see the internal structure of the ammonite shell. You can learn more about the ammonite from the panel, which contains a timeline of when ammonites were alive, a diagram comparing their sizes, and an artist's impression of what they may have looked like.

**Timeline:**  
Present day  
Cenozoic era  
-65,000,000  
Paleogene period  
-55,000,000 ~ 25,000,000  
Cretaceous period  
-145,000,000 ~ 65,000,000  
Mesozoic era  
-250,000,000  
Proliferate around the world for as long as 350 million years (approx)  
Paleozoic era  
-544,000,000  
Devonian period  
-416,000,000 ~ 371,000,000  
Silurian period  
-435,000,000 ~ 416,000,000

<Artist's Impression of live ammonites>  
Background Illustration: Kazushi Kamimoto

**Ammonoidea**

Distribution of common fossil discoveries

Size comparison image

0 1m 2m

Do not fit other people into the jointed stages.  
Doing so could result in injury.  
Adults should make sure their children observe the caution.

**CAUTION**

Canon  
**CREATIVE PARK**  
<http://www.canon.com/c-park/>  
© Youichi Wada  
**PAPER WONDERLAND**  
<http://www.hs-dion.ne.jp/~pwonder/>