



## Pop-up Card (Chinese Phoenix)

Open up this pop-up card, and a beautiful Chinese Phoenix bursts out, spreading its wings ready to fly. The Chinese Phoenix is a mythical Chinese bird that is considered a symbol of good luck. Add this card to a gift for a special occasion. It's a great project to do with the kids, too!

### ★ Assembly Instructions

- 1) Carefully cut out the parts.
- 2) Fold along the dotted lines, making mountain or valley folds as indicated.
- 3) Follow the order indicated in the instructional diagrams, and attach the parts to assemble.  
(Read the Explanation of Symbols for more information.)
- 4) Your pop-up card is finished!

### ★ Tools

Scissors, glue (We recommend craft glue.)

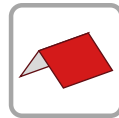
### ★ Caution

Keep scissors and glue away from small children.  
Be careful not to cut your fingers when using scissors.  
Fold the folding lines before gluing.

### ★ Explanation of Symbols



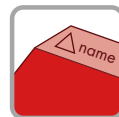
————— **Cut line**



- - - - - **Mountain fold**



- - - - - **Valley fold**



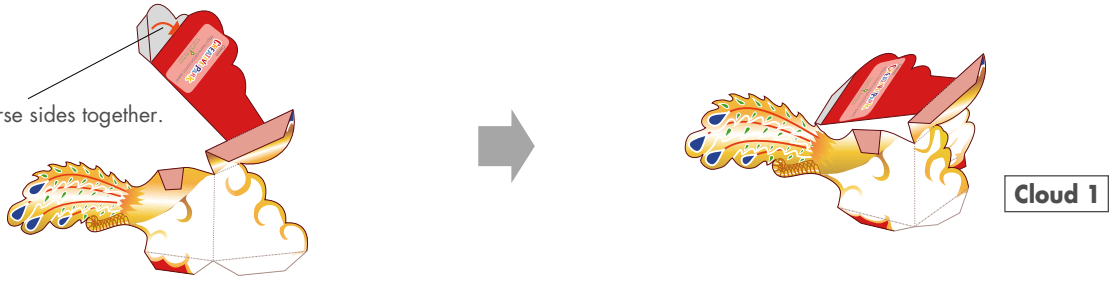
#### △ Glue tabs with symbols and part names

These tabs are to be glued onto the matching parts, which name is indicated on the tab.

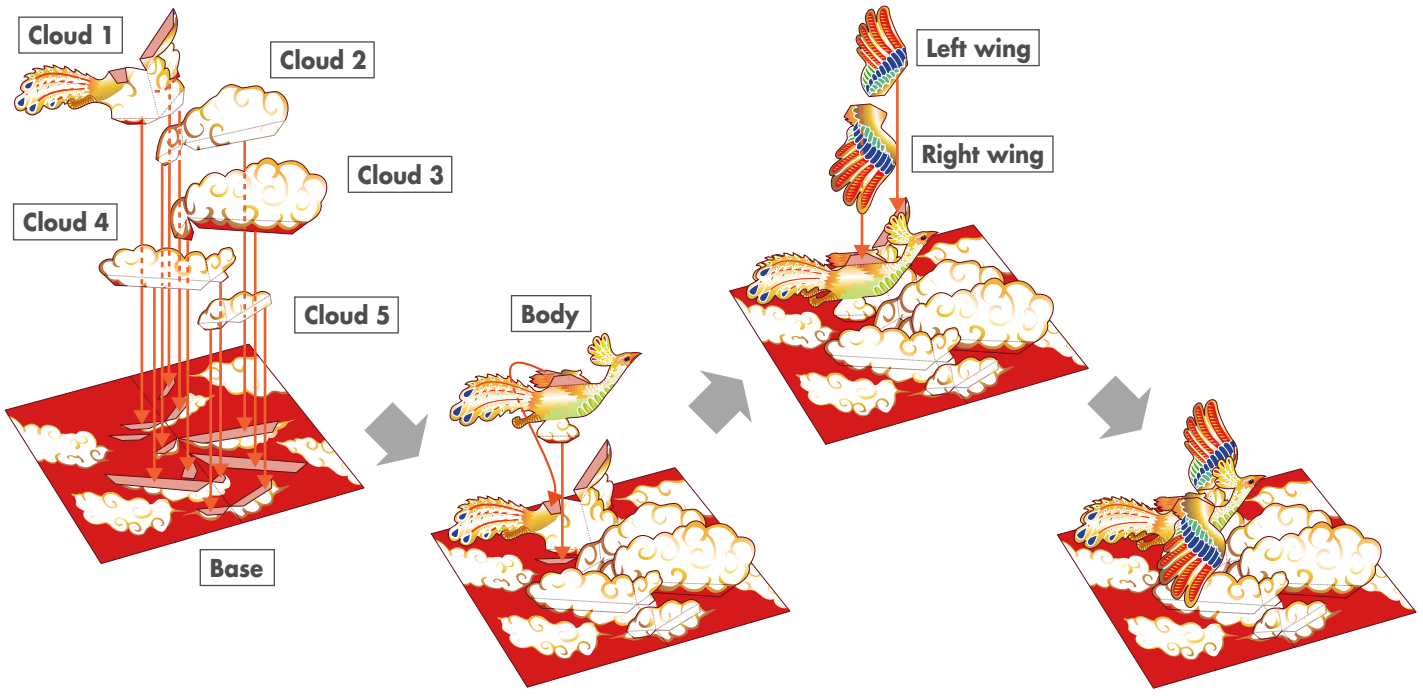
**★ Assemble the Pop-up Card (Chinese Phoenix)**

**1 Assemble the cloud 1**

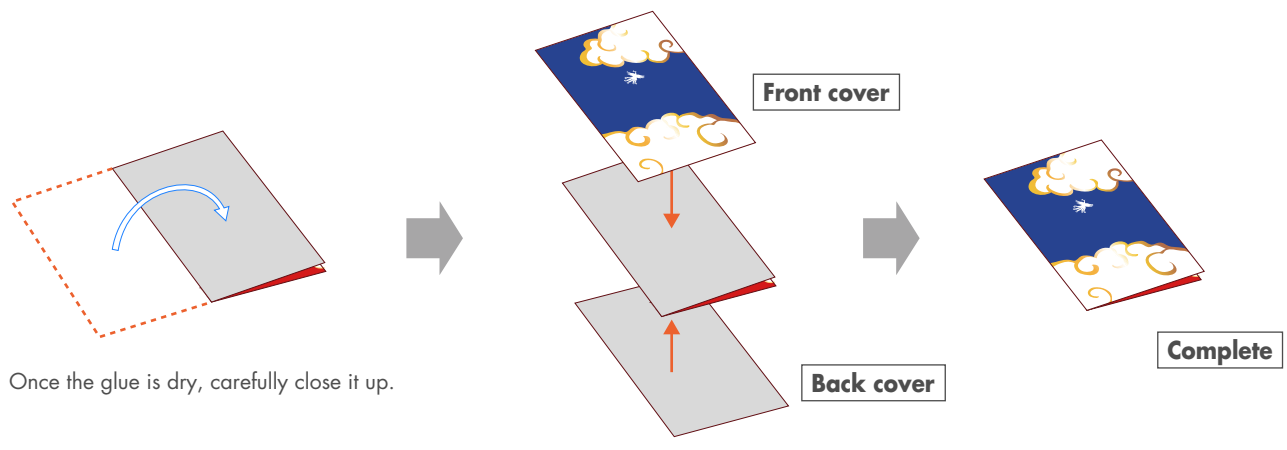
Glue the reverse sides together.



**2 Attach the clouds (1~5), body, and wings (right, left) to the base**



**3 Attach the front and back covers to the base**



Once the glue is dry, carefully close it up.