

CREATIVE PARK

<http://www.canon.com/c-park/>



Tools	Notation Key
Scissors	Scissors line
Paste, or woodwork glue	Mountain fold
Stencil pen, or bodkin	Valley fold
Ruler	Glue spot
	A1, B1 Parts No.
	+A1, +B1 Numbers of parts to be attached

- ◆ The Assembly instructions are divided into two blocks:
A (Card) and B (Dog and "Happy Birthday" Sign).
Follow the instructions for each block to assemble your card.

<Caution>

- ※ Keep scissors and glue away from small children.
- ※ Be careful not to cut your fingers when using scissors.

A Card parts

Refer to Assembly Instructions: Page1.



A1 Card

A Card parts

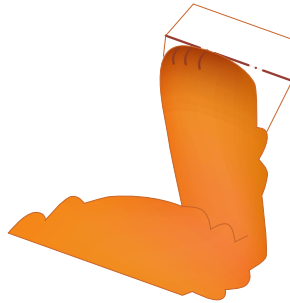
Refer to Assembly Instructions: Page1.



B Dog and "Happy Birthday" sign parts
Refer to Assembly Instructions: Page2.



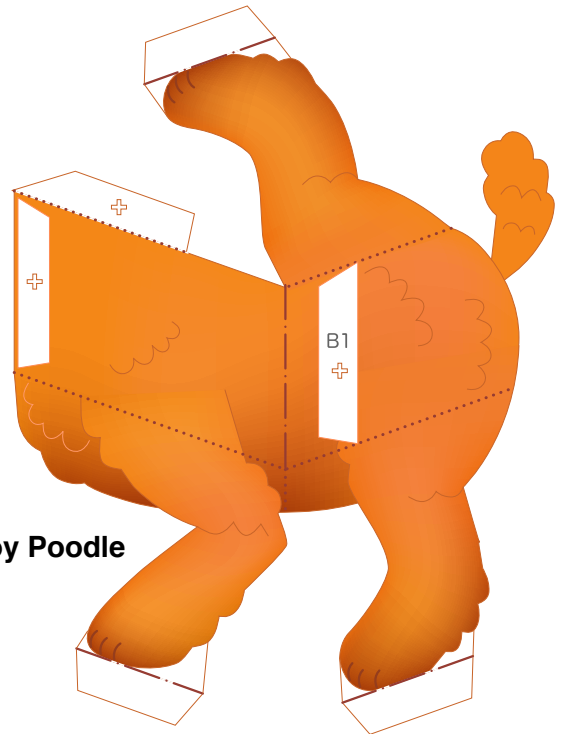
B4 Toy Poodle



B2 Toy Poodle



B3 Toy Poodle



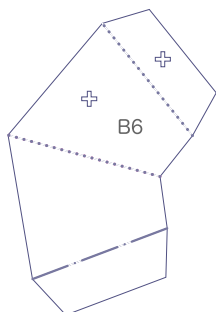
B1 Toy Poodle



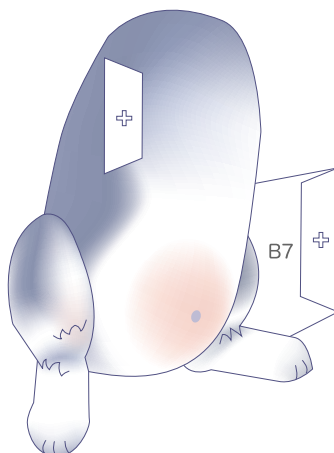
B5 "Happy Birthday" sign

B Dog parts

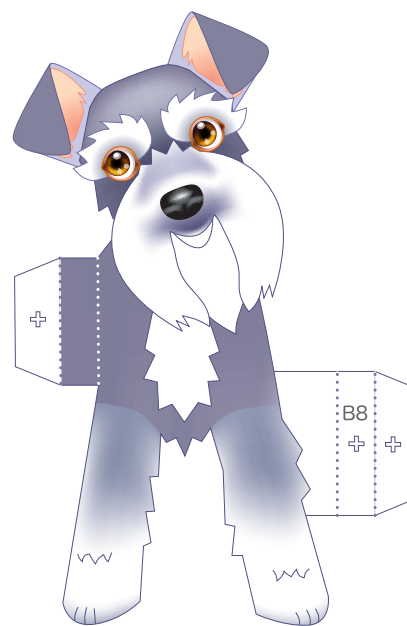
Refer to Assembly Instructions: Page2.



B6 Joint



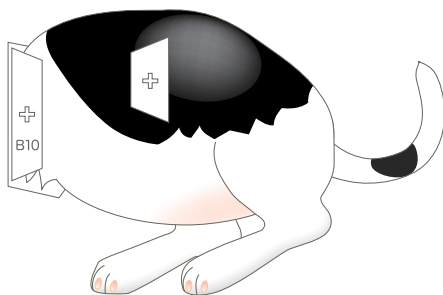
B7 Miniature Schnauzer



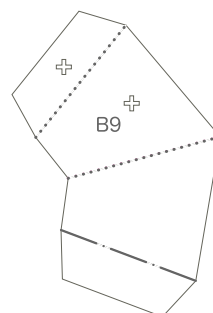
B8 Miniature Schnauzer



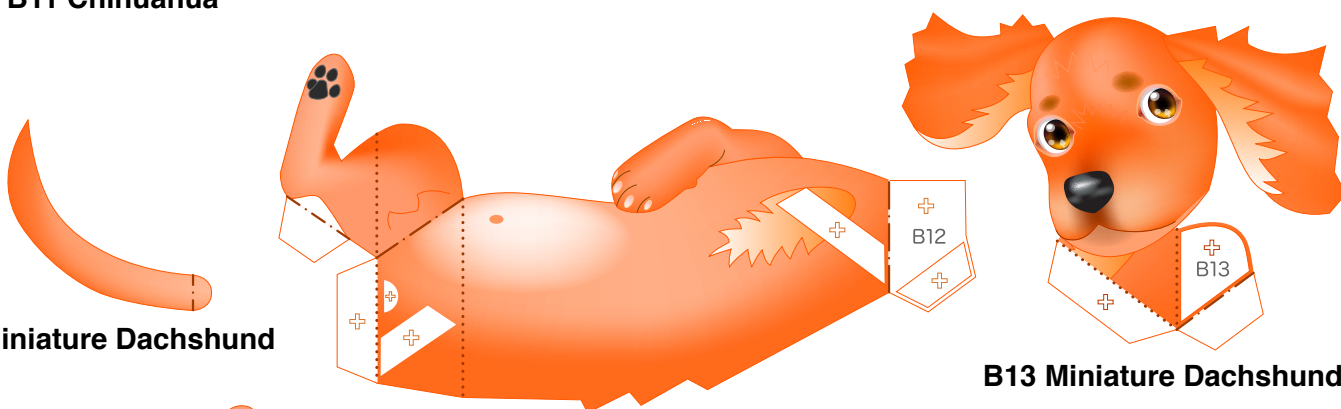
B11 Chihuahua



B10 Chihuahua



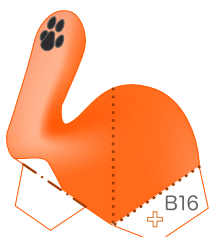
B9 Joint



B15 Miniature Dachshund

B12 Miniature Dachshund

B13 Miniature Dachshund



B16 Miniature Dachshund



B14 Miniature Dachshund