

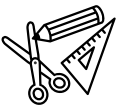
Jack and the Halloween Dancers



Cut out the parts, and then carefully follow the assembly instructions.


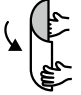
Tools & Materials

- Scissors, utility knife
- Glue stick and wood glue
- Ruler or set square
- Pencil
- Object with pointed tip (dried-up ballpoint pen, stencil pen, etc.)
- Toothpicks
- Tweezers




Tips for Assembly

- Keep track of which part is which by writing each part's number in pencil on the back of the part.
- Use a dried-up ballpoint pen, stencil pen, or other pointed object and a ruler to score along the fold lines. This will create sharper, neater folds.
- Before gluing, fold and crease along the fold lines and add curves where needed.
- Use a toothpick when applying glue. Thinly applied glue gives a neater finish.
- Use tweezers when picking up and attaching small parts.







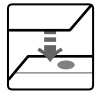











Caution

- This paper craft uses scissors, utility knives, glue, and other items and materials which may be dangerous to children. Keep these items and materials out of reach of children while you work.
- Take care not to injure yourself when using scissors, utility knives, and other sharp or pointed objects.

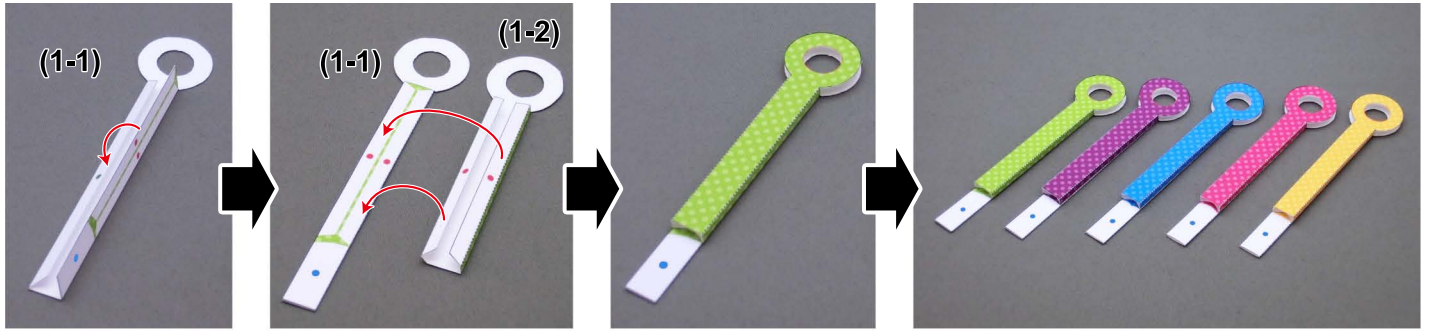


Symbols and Notation

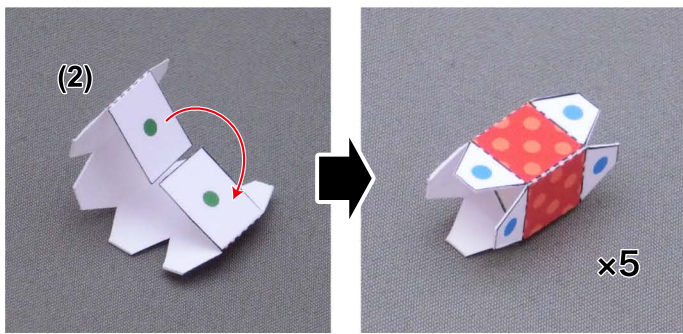
	Pattern		Apply glue (red arrow)
	Assembly instructions		Insert (blue arrow) (Do not apply glue)
(1), (2), (3)...	Part numbers		Add curves
	Mountain fold line (dotted line)		Dots on glue tabs show where and how to glue parts together.
	Valley fold line (dotted & dashed line)		Glue tab (red dot) Glue one part to another part
	Cut line (solid line)		Glue tab (green dot) Glue one place to another on the same part
	Partial cut line (solid red line)		Glue tab (blue dot) Glue one part to the reverse of another part
	Cut-out area		Glue tab (yellow dot) Glue the reverse of two parts together

1

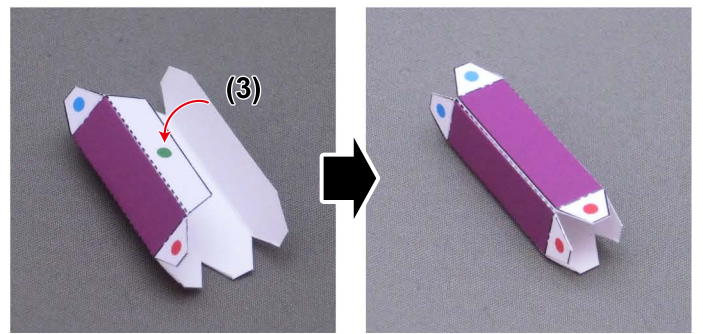
Make five in the same way, one of each color.



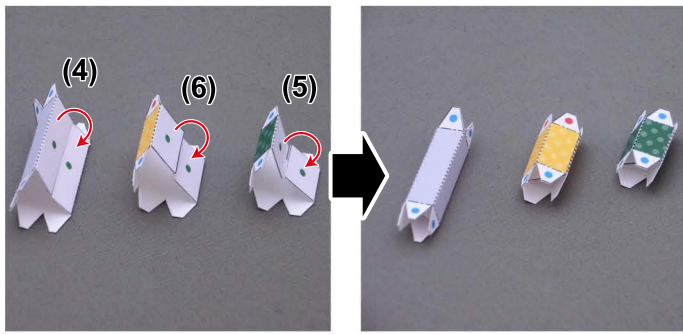
2



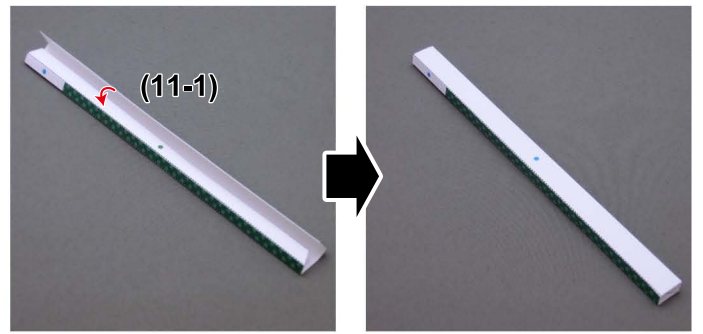
3



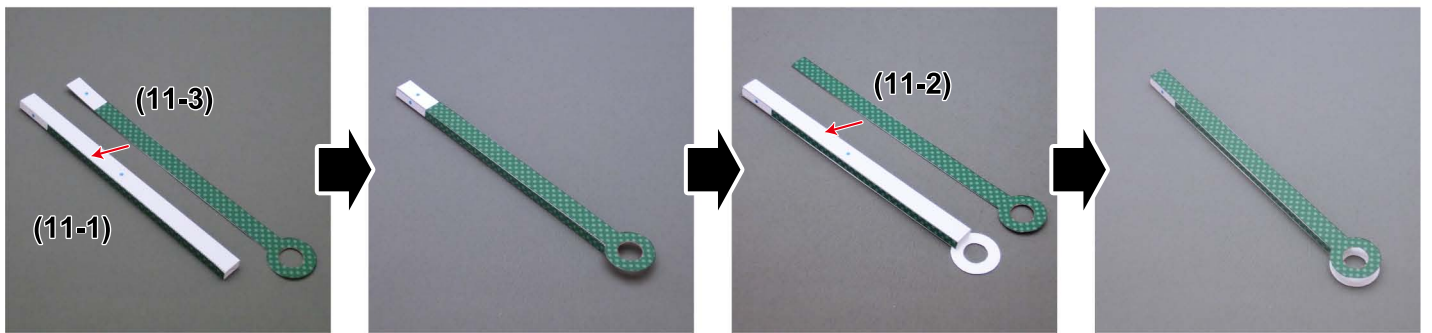
4



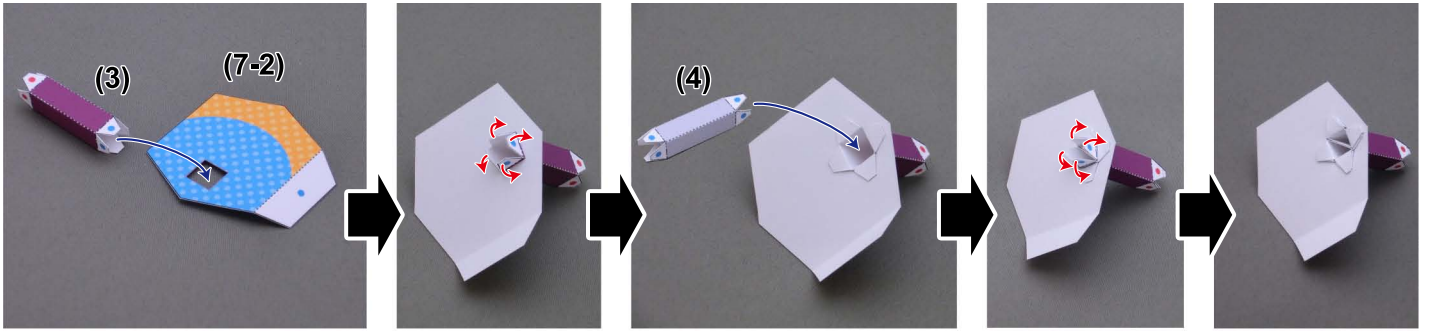
5



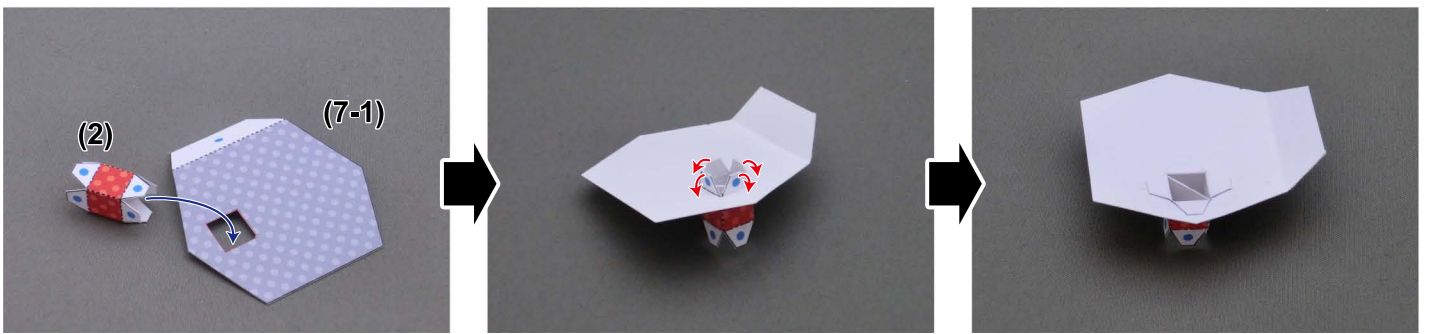
6



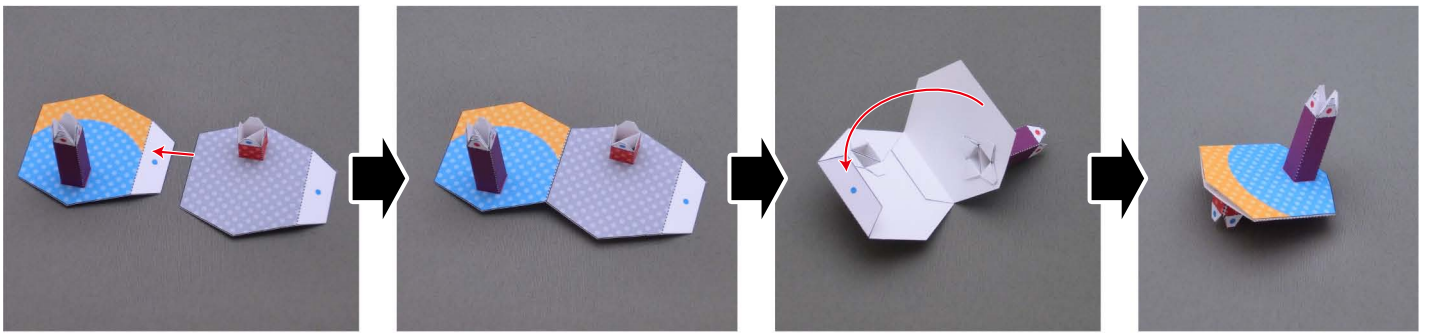
7



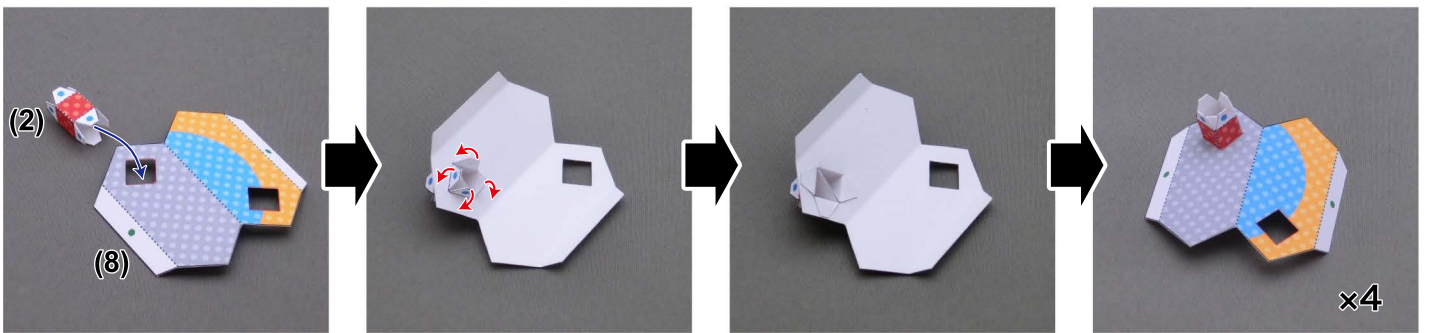
8



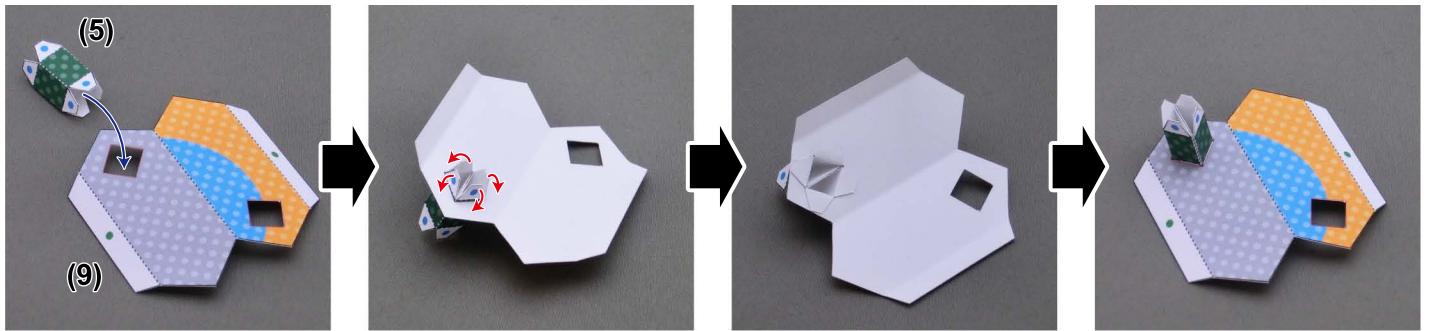
9



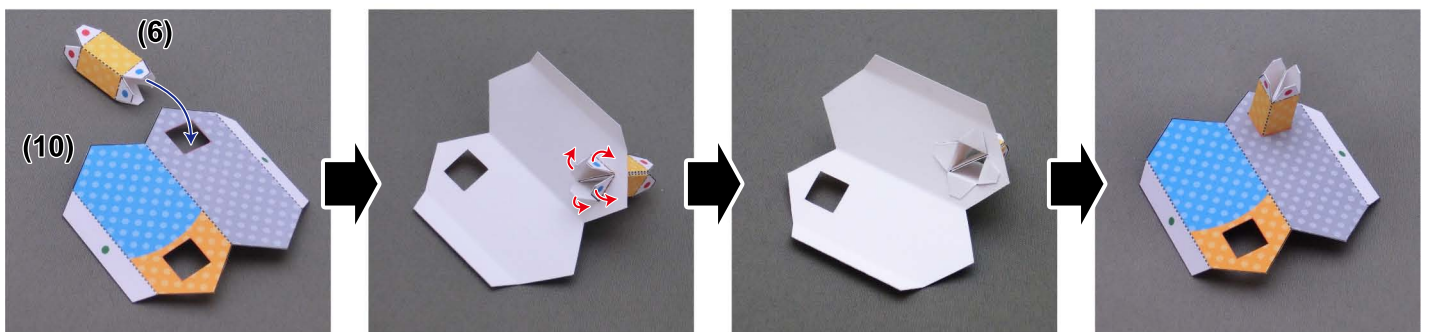
10 Take care as parts (8) and (9) are very similar.



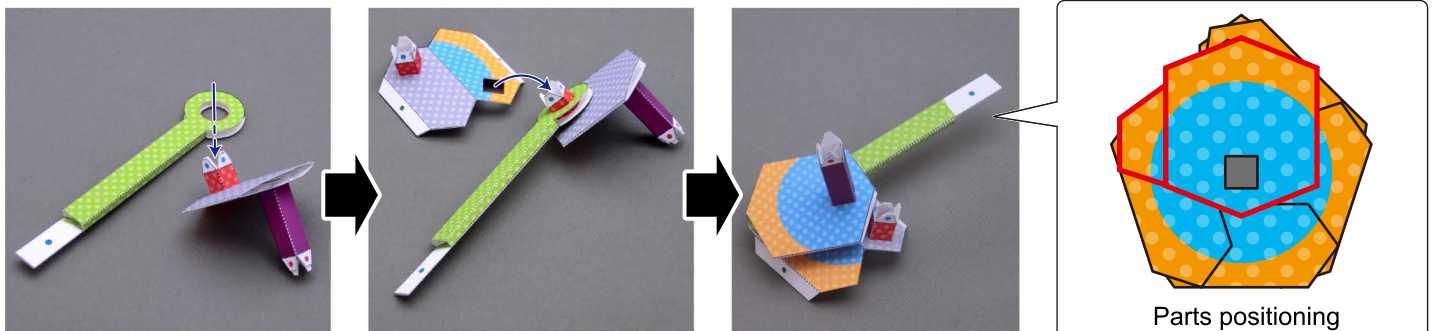
11



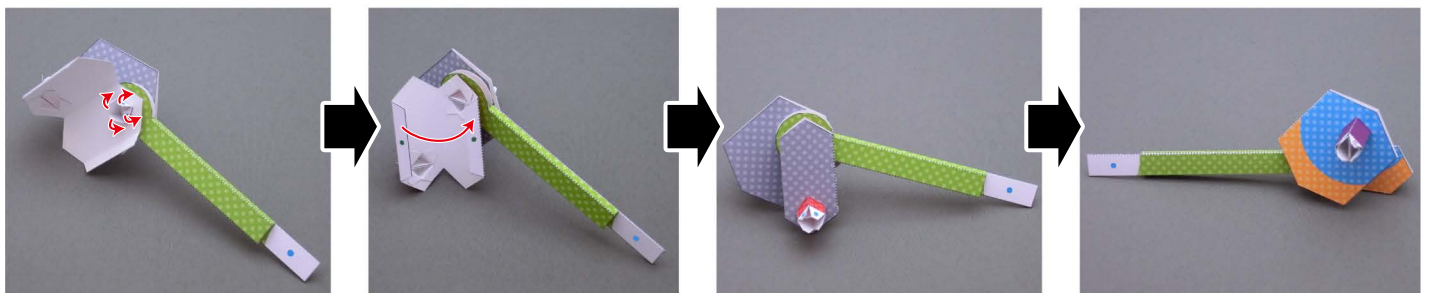
12

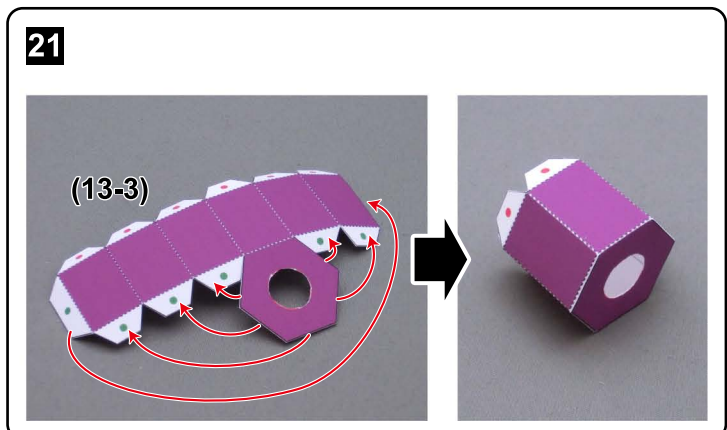
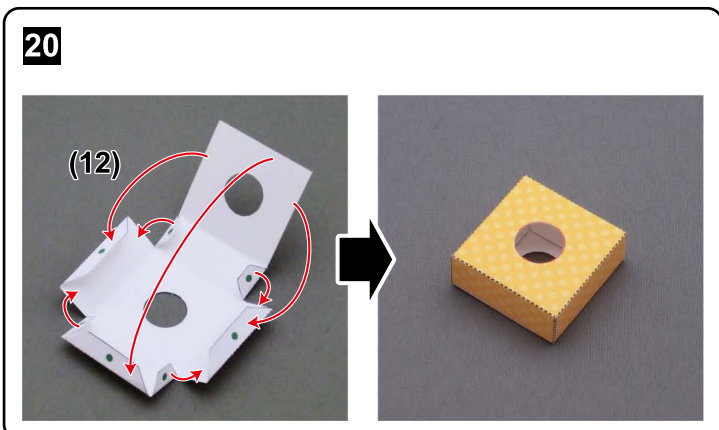
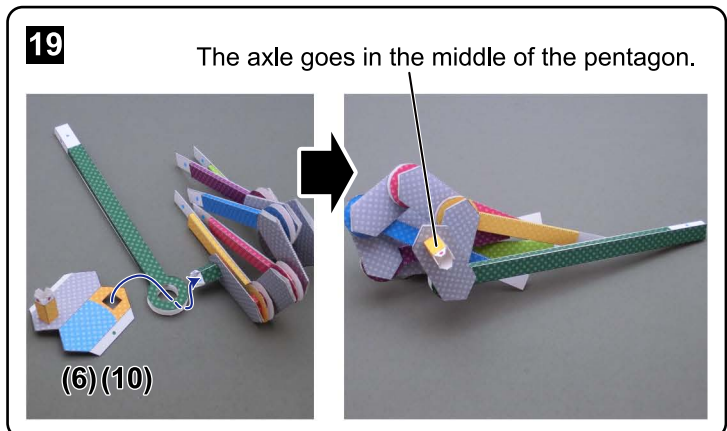
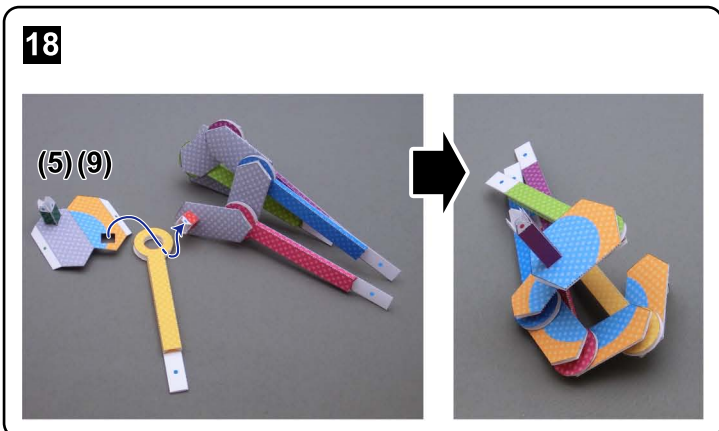
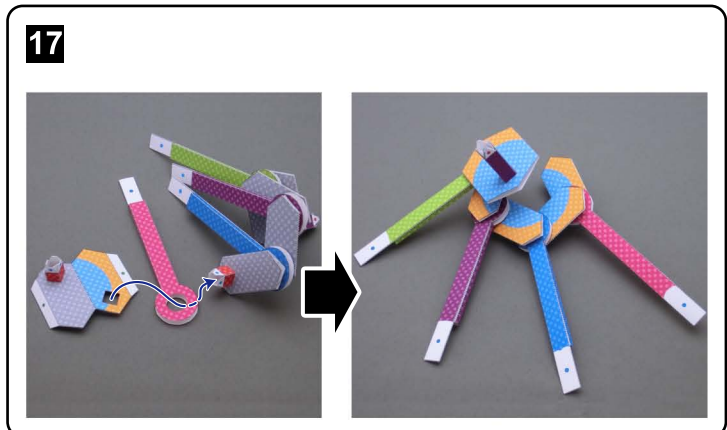
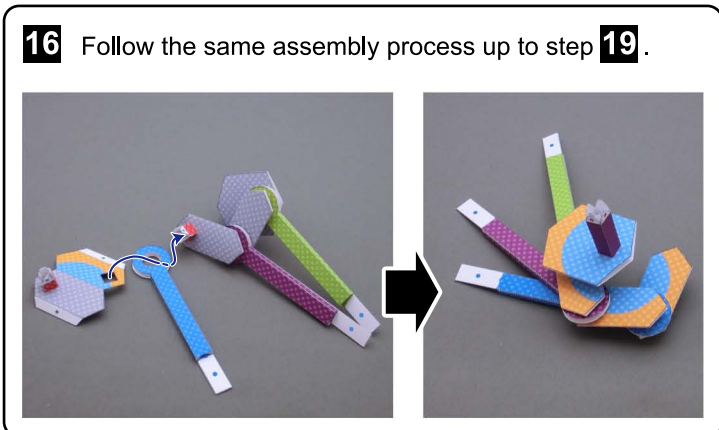
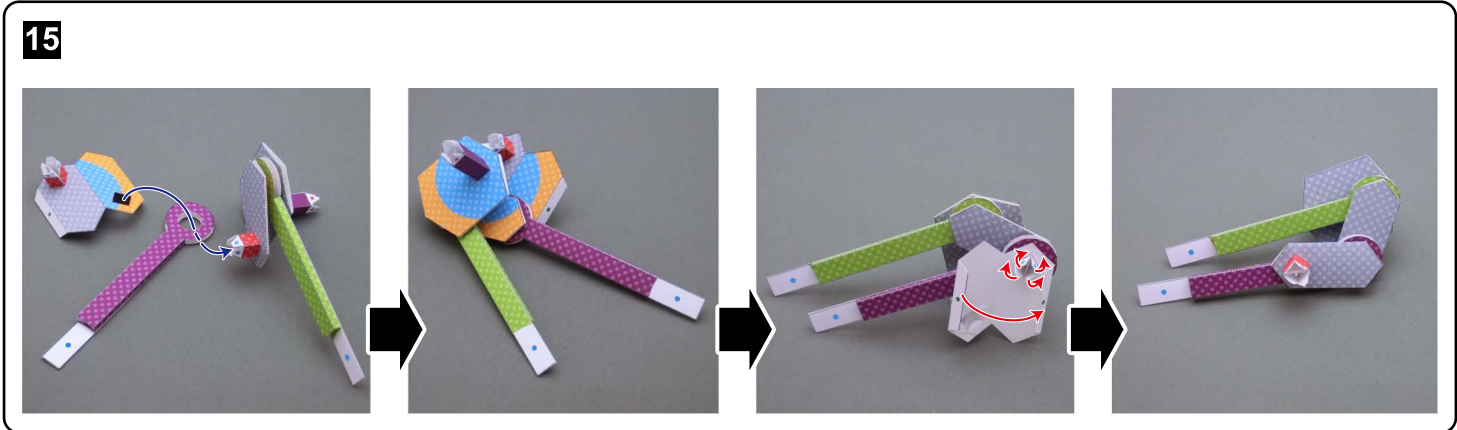


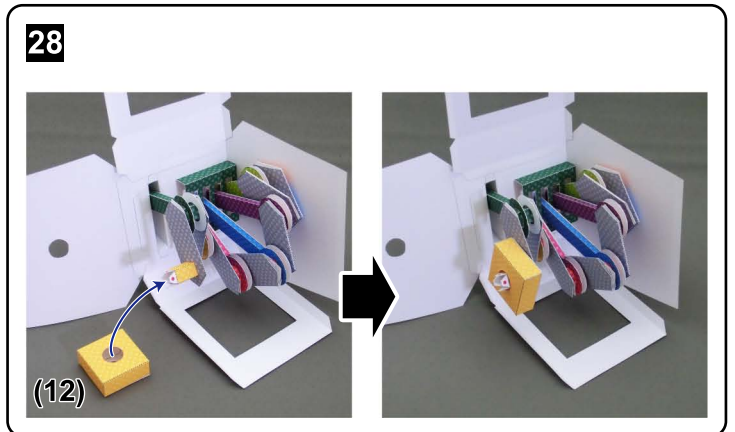
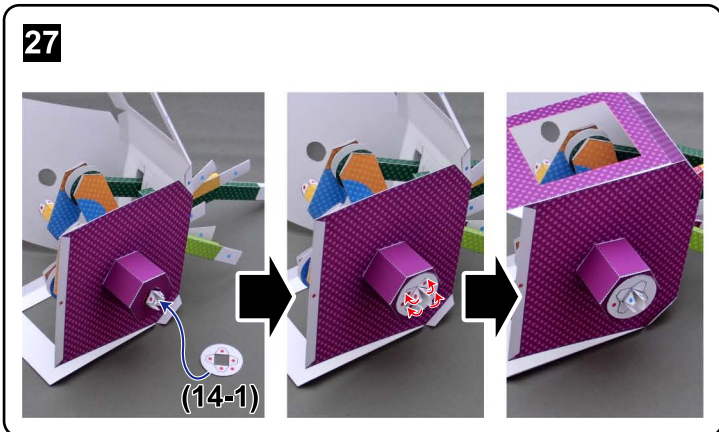
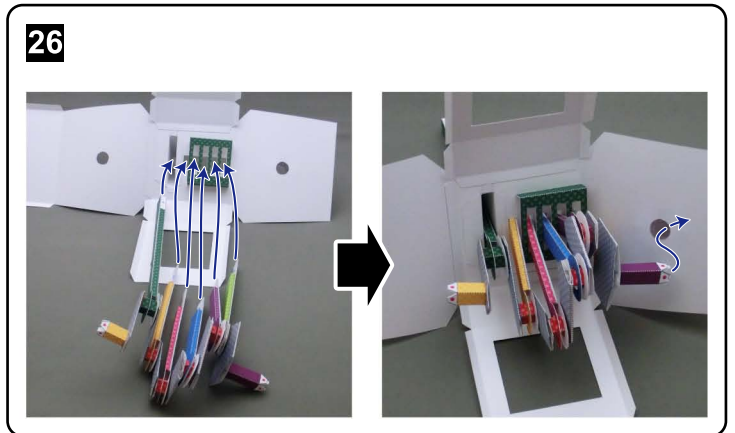
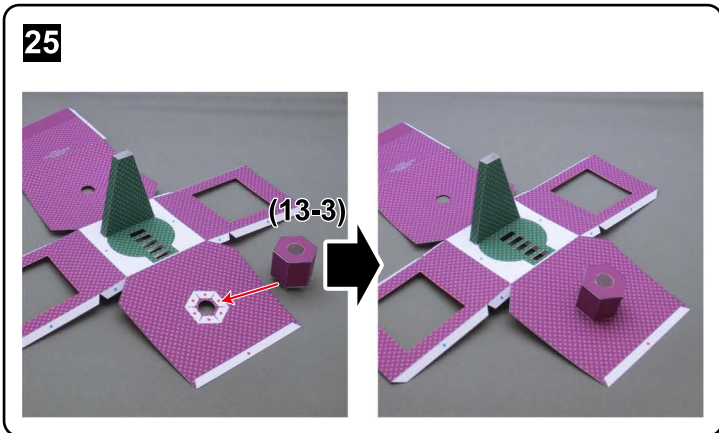
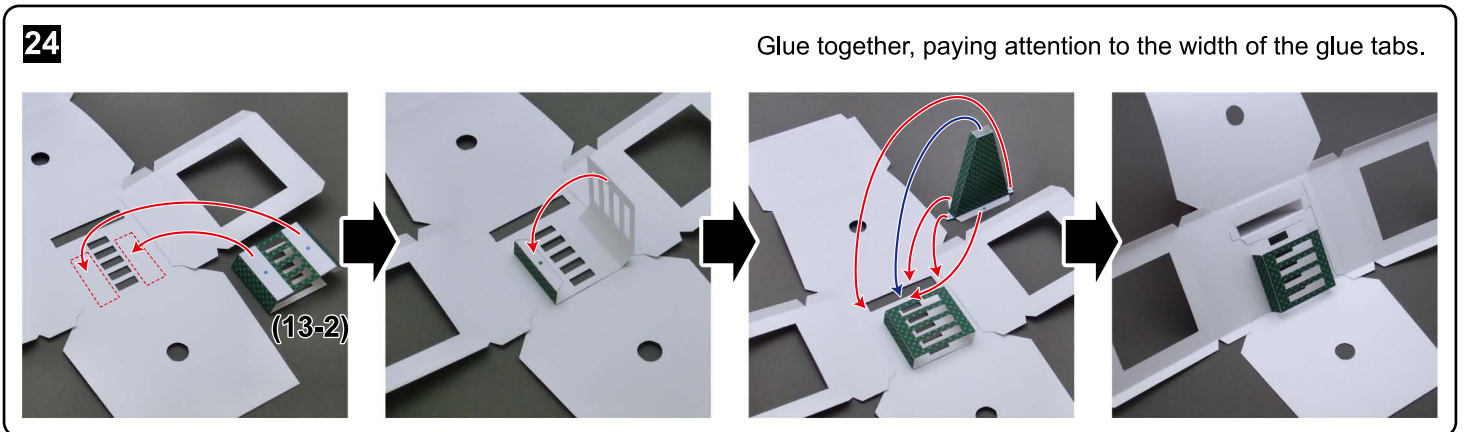
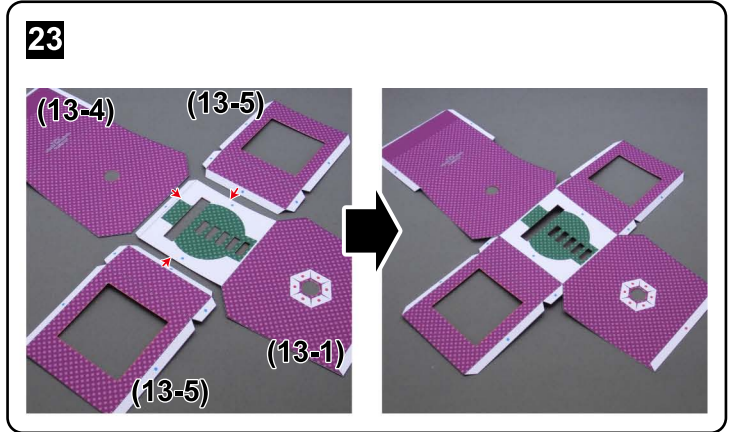
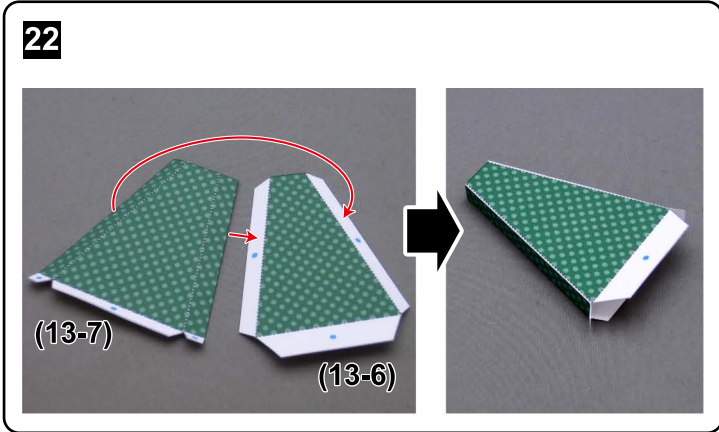
13

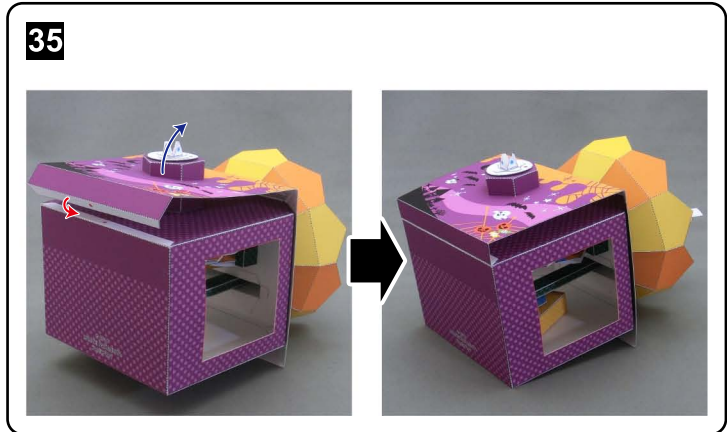
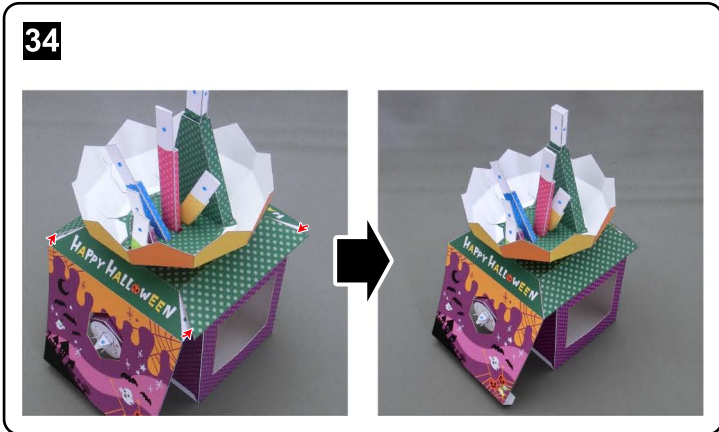
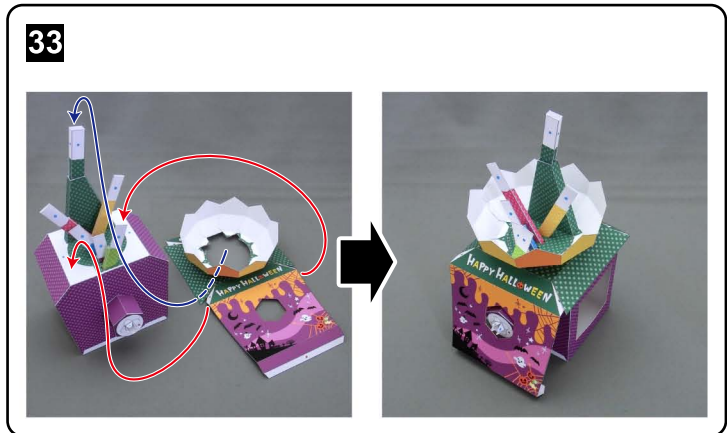
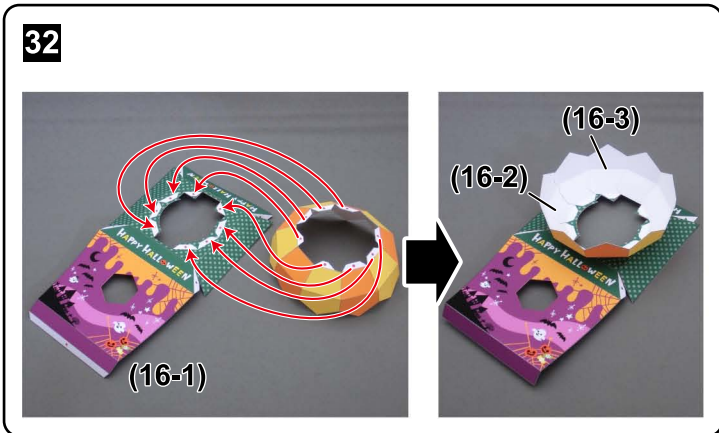
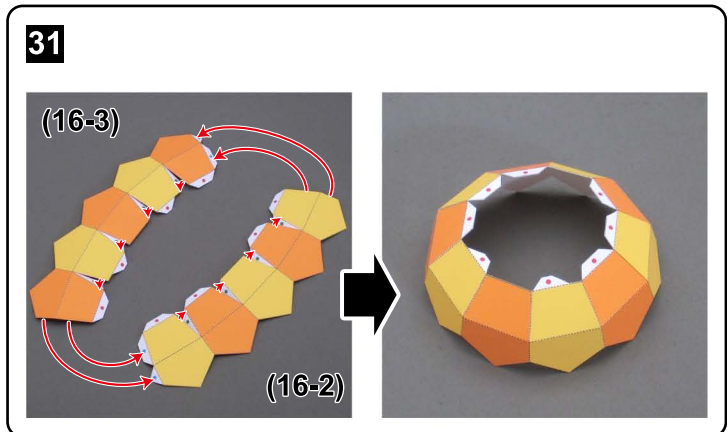
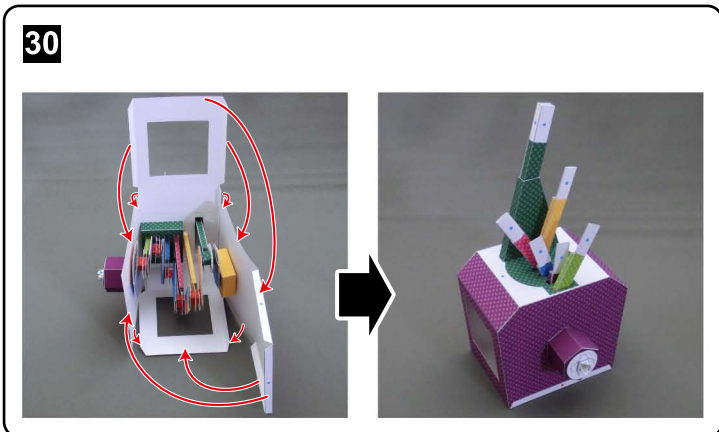
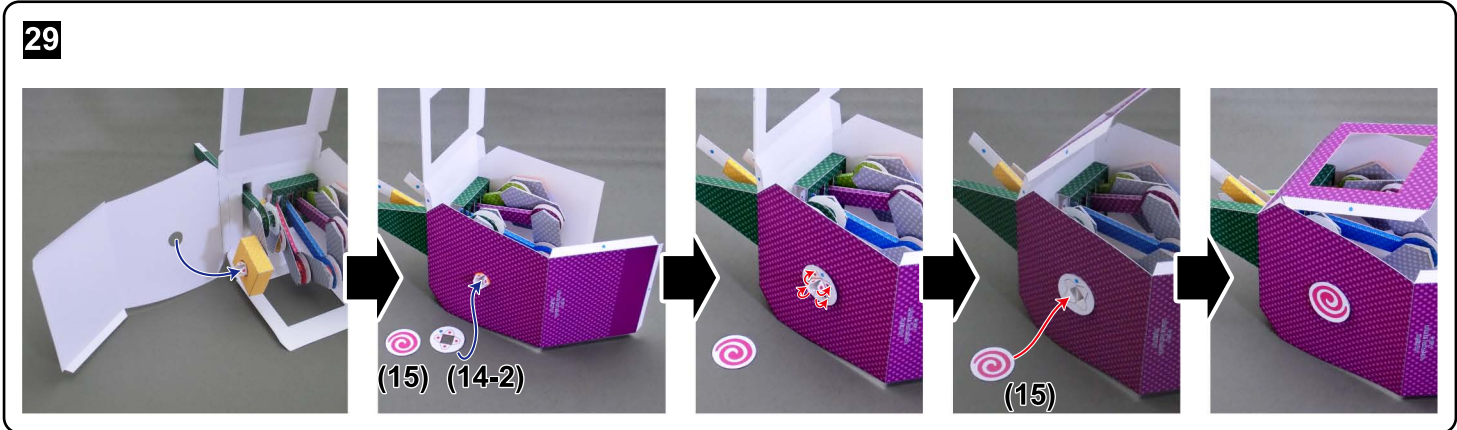


14



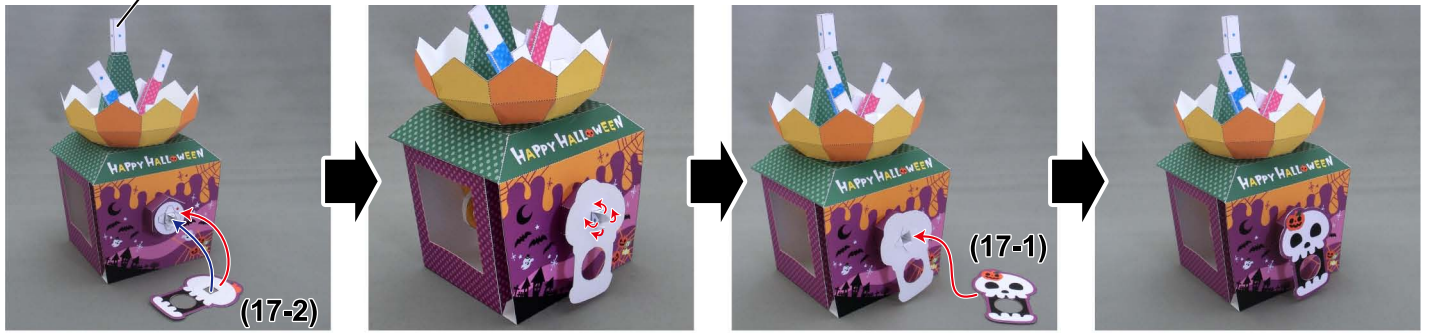




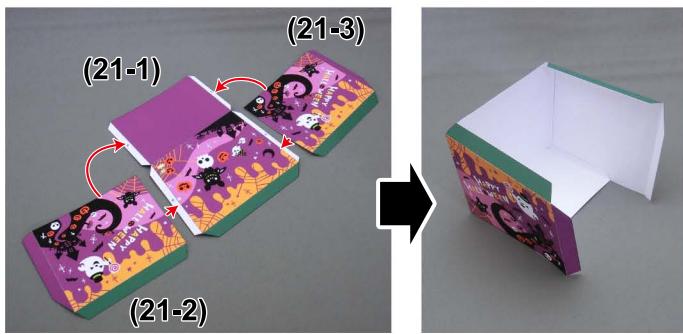




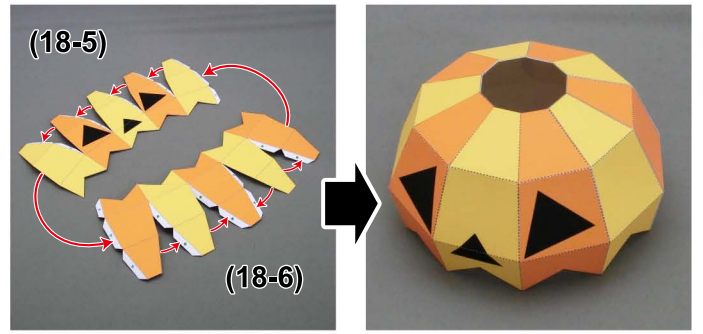
36 With this part at this height, attach (17-2).



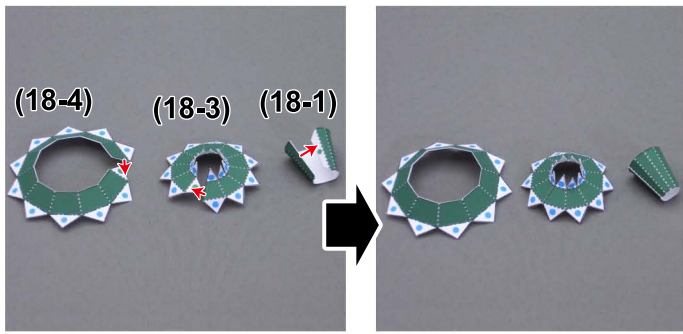
37



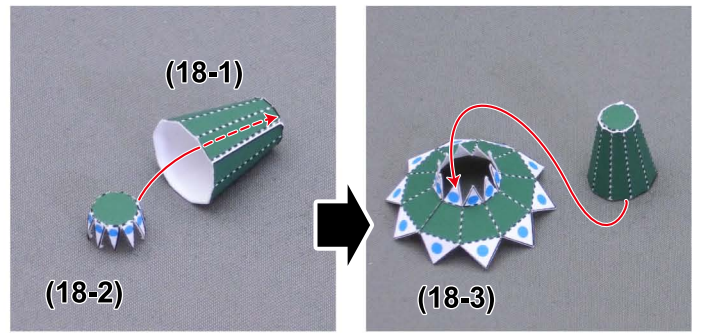
38



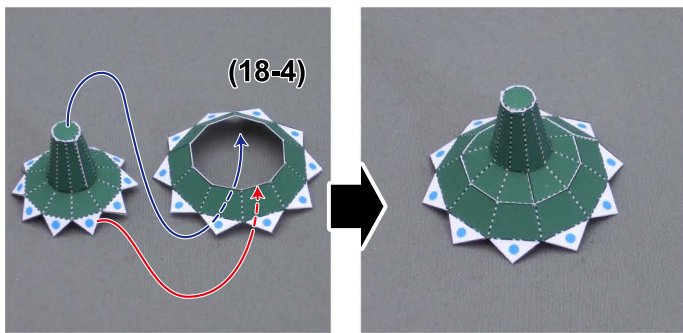
39



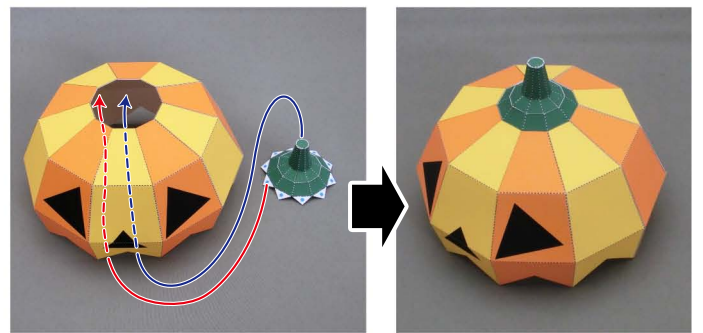
40



41



42



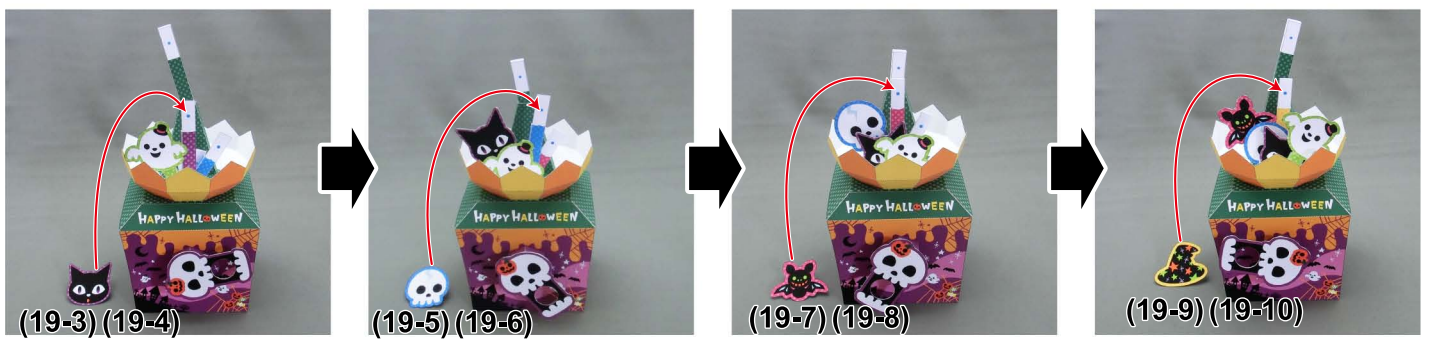


43 Turn the handle until this part is upright.

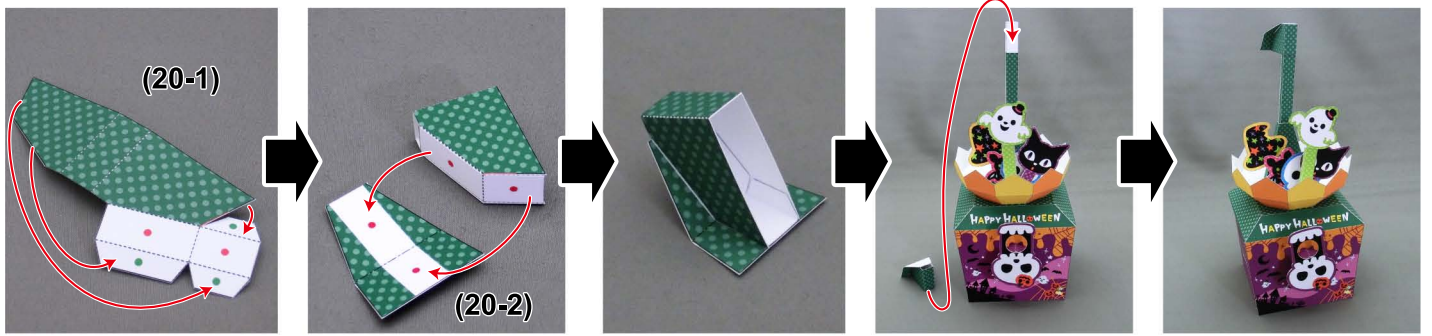
Attach the ghost at a slight angle like in the picture below.



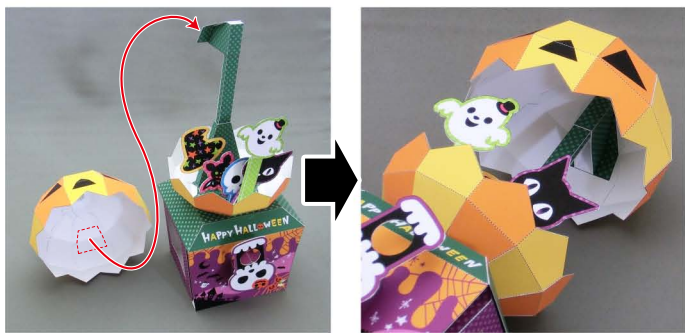
44 Attach (19-3) ~ (19-10) in the same way.



45



46



47



How to play



Put your finger in the hole and turn the handle.
It can be turned either left or right.
If the handle gets stuck, don't force it.
Turn it back the other way a little, and then try again.

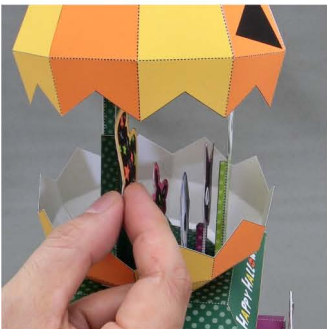


If you remove the body you can see how the internal device works.

Having trouble?



If the characters are getting caught on the pumpkin inside,
trim their edges with scissors.



The characters may get stuck if they are bent,
so straighten them out flat.