



● **Pattern:** 19 sheets ● **Assembly Instructions:** 3 sheets ● **Number of parts:** 83

You will need:

Scissors, Glue, Pencil, Ruler, Used ball-point pen

----- Mountain fold ——— Scissors line □ Glue spot ✂ Cut out

Caution: Glue, scissors and other tools may be dangerous to young children so be sure to keep them out of the reach of young children.

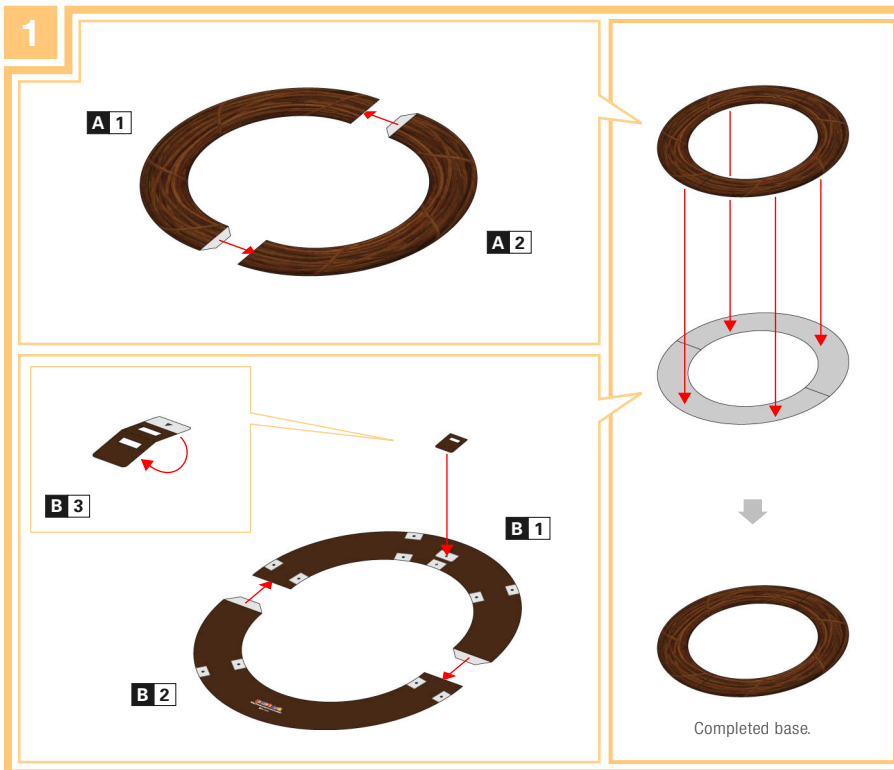
ASSEMBLY TIP

✓ **BEFORE YOU BEGIN**

- Trace along the folds with a ruler and a used pen (no ink) to get a sharper, easier fold.
- Before gluing the items (leaves, flowers, lanterns, etc) to the base, try arranging them in a few different ways to decide on your preferred layout. You can follow the example layout in the completed picture and assembly instructions, but it can also be fun to design your own original wreath.

✓ **DURING ASSEMBLY**

- When attaching the items to the base, dab a small amount of glue to the edges of the leaves and twigs, and the center of the flowers, rather than putting glue on the item's entire base.
- After attaching the items to the base, use your hands or a pencil to add curves to them or bend them forward slightly, keeping a nice overall balance and creating a 3D effect.



2

C 2

C 1

Align the X marks.

Align the + marks.

4

4 (For part 4, there are 30 parts in 3 colors.)

1 (Parts 1 to 3 are all made in the same way.)

Attach to the twigs however you like.
(You do not need to use all the berries.)

3

D x5

After attaching to the base, curve them slightly and pull them into shape.

Align the ● marks on the underside of the base, and glue down.

5

5 (Parts 5 to 20 are all made in the same way.)

Arrange them to your liking, using the diagram as a guide.
(You do not need to use all the leaves.)

6

Align the marks and colors.

Arrange them to your liking, using the diagram as a guide. (You do not need to use all the flowers.)

(21)-c (Parts (21)-c to (25)-c are all made in the same way)

(21)-b (Parts (21)-b to (25)-b are all made in the same way)

(21)-a (Parts (21)-a to (25)-a are all made in the same way)

8

Attach using the © mark as a guide for the center.

E 3

E 2 x 2

E 1

7

Arrange them to your liking, using the diagram as a guide.

(26) (Parts (26) to (27) are all made in the same way)

(28)

9

Complete! Hang it on the wall!