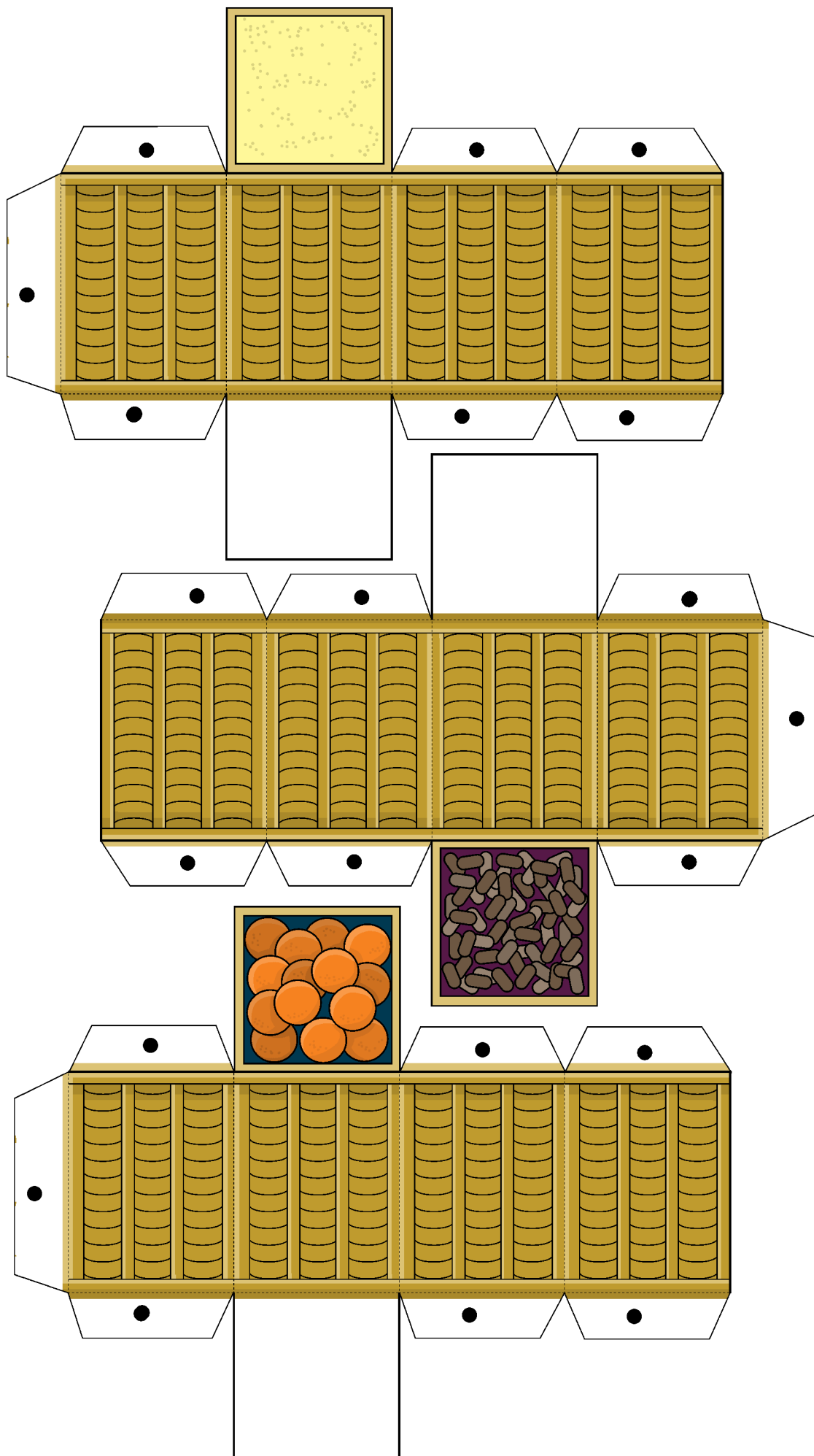


# BIBLE

## Paper Toys

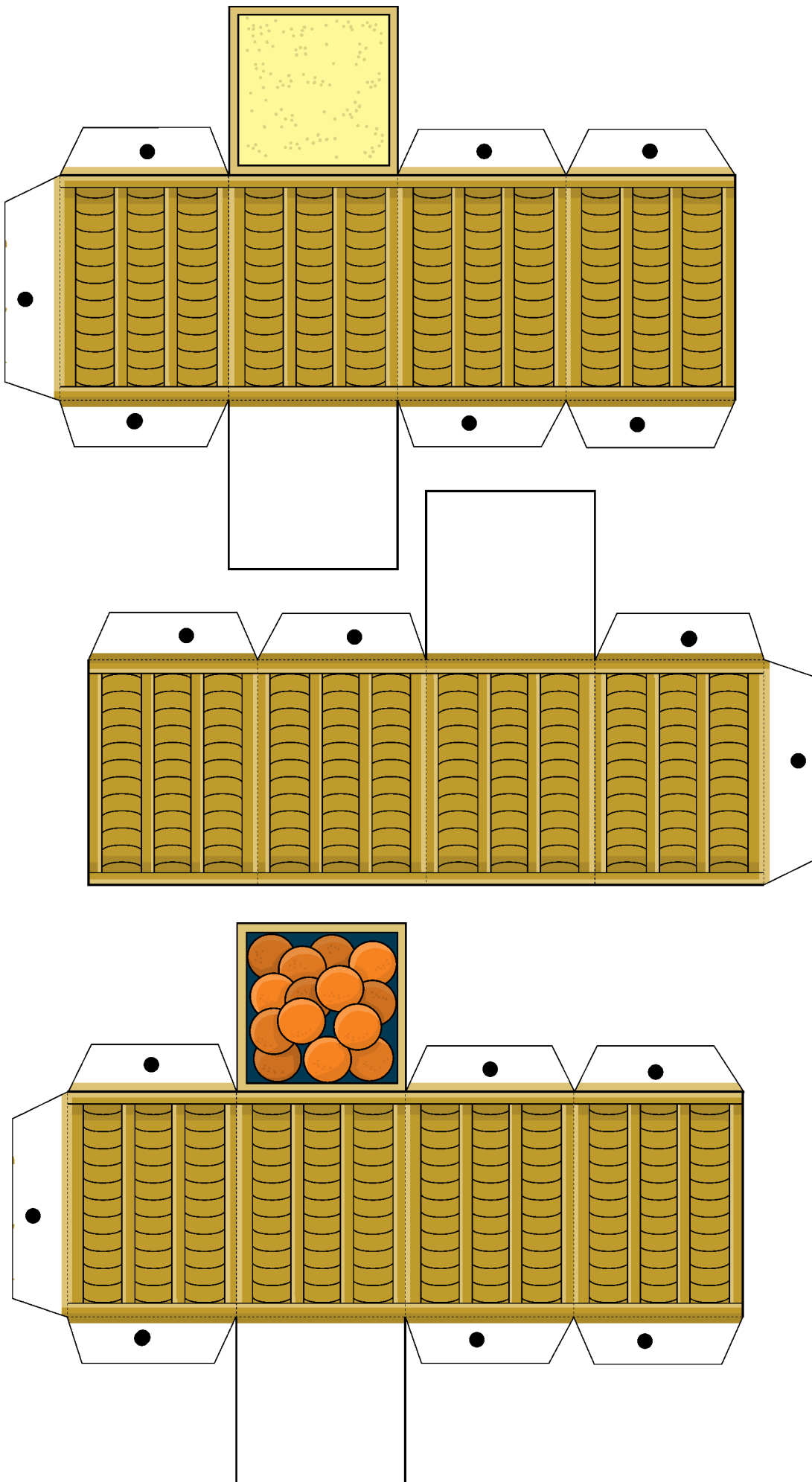


## Town Accessories



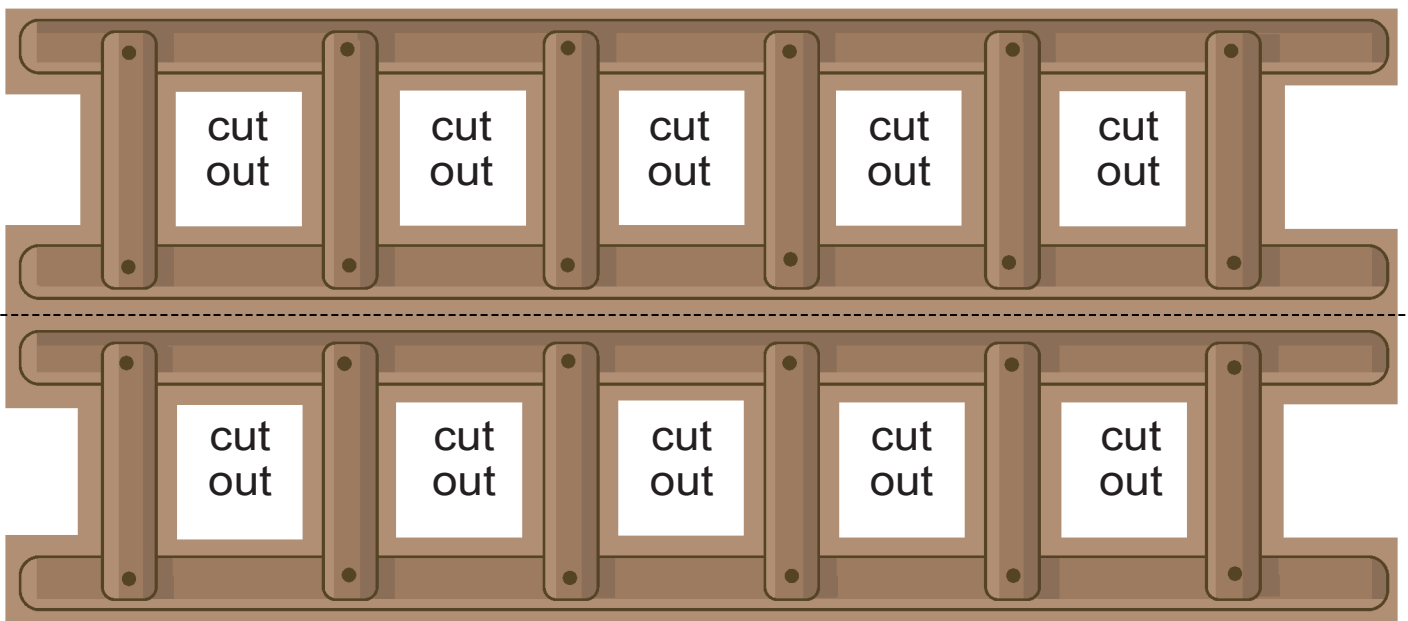
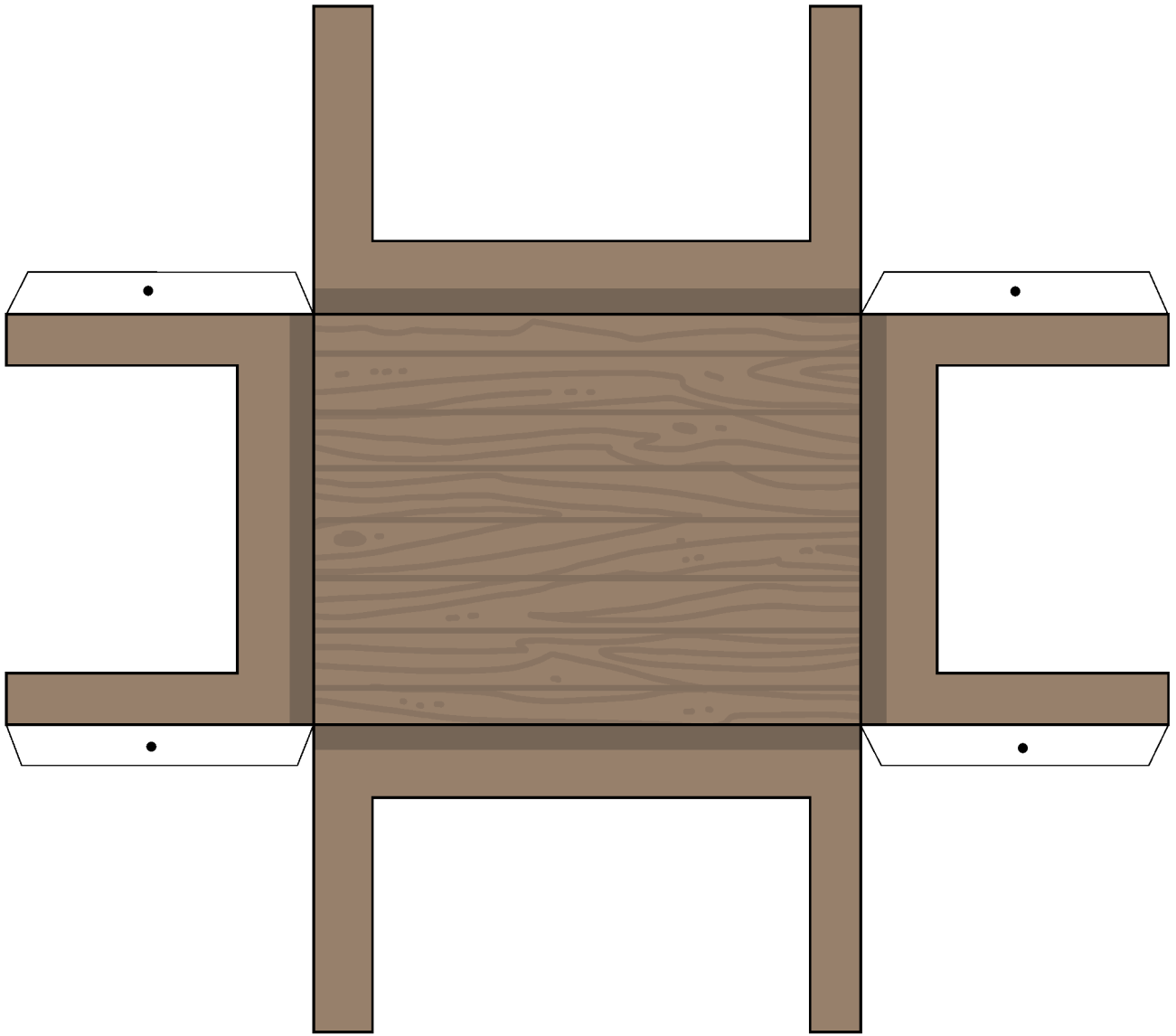
Fold in the middle and glue together before cutting along the black line of the plank.

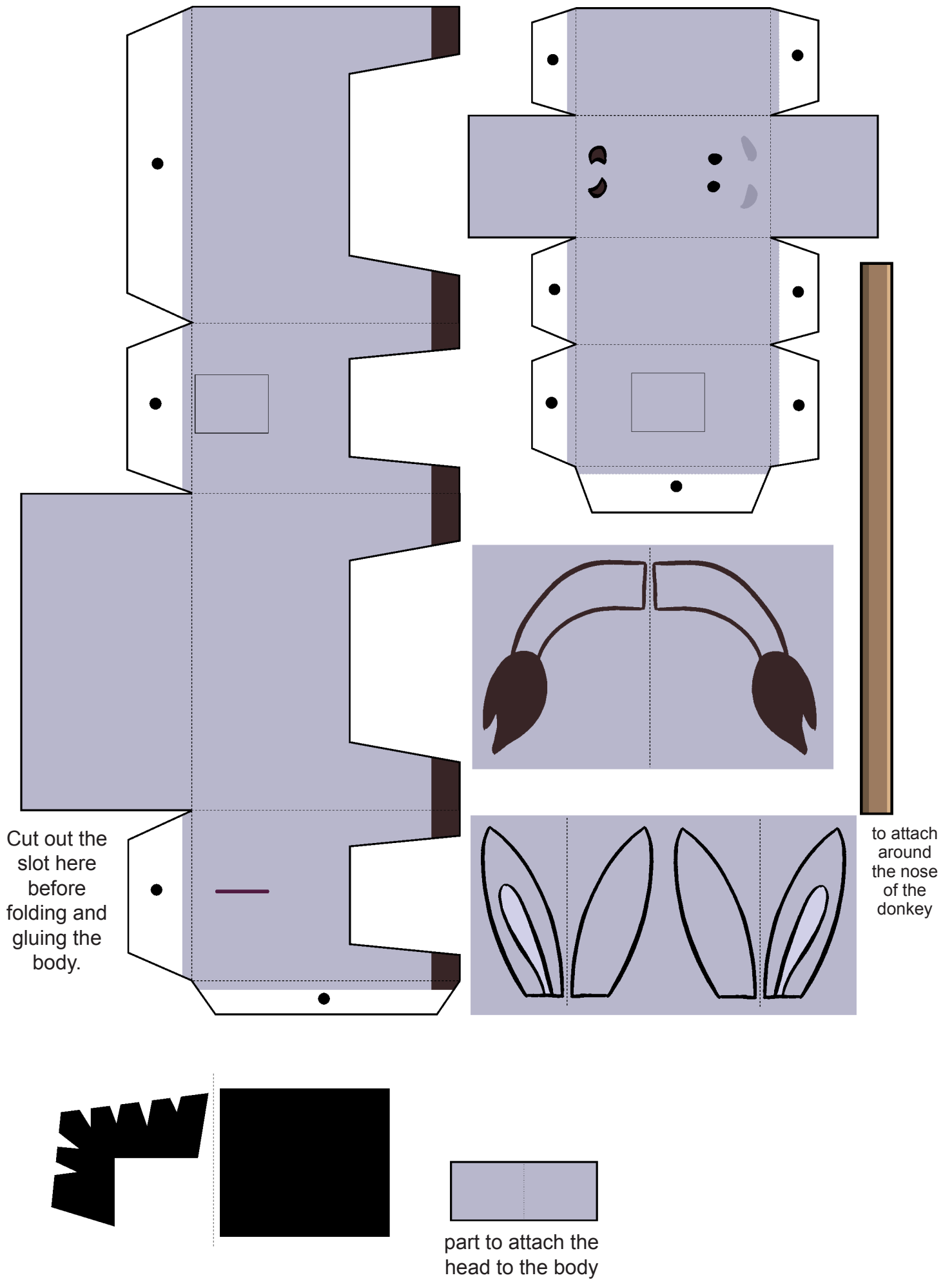


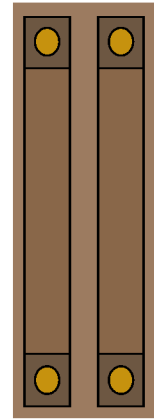
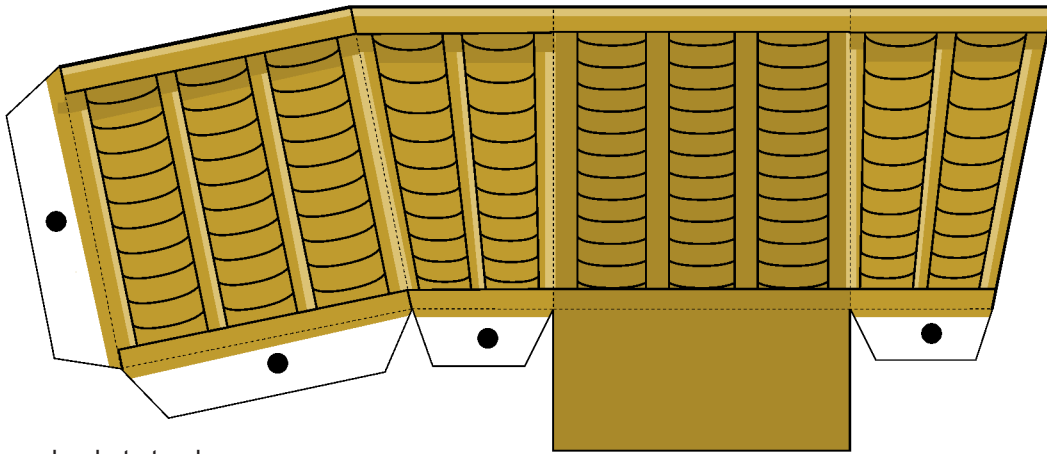


Fold in the middle and glue together before cutting along the black line of the plank.



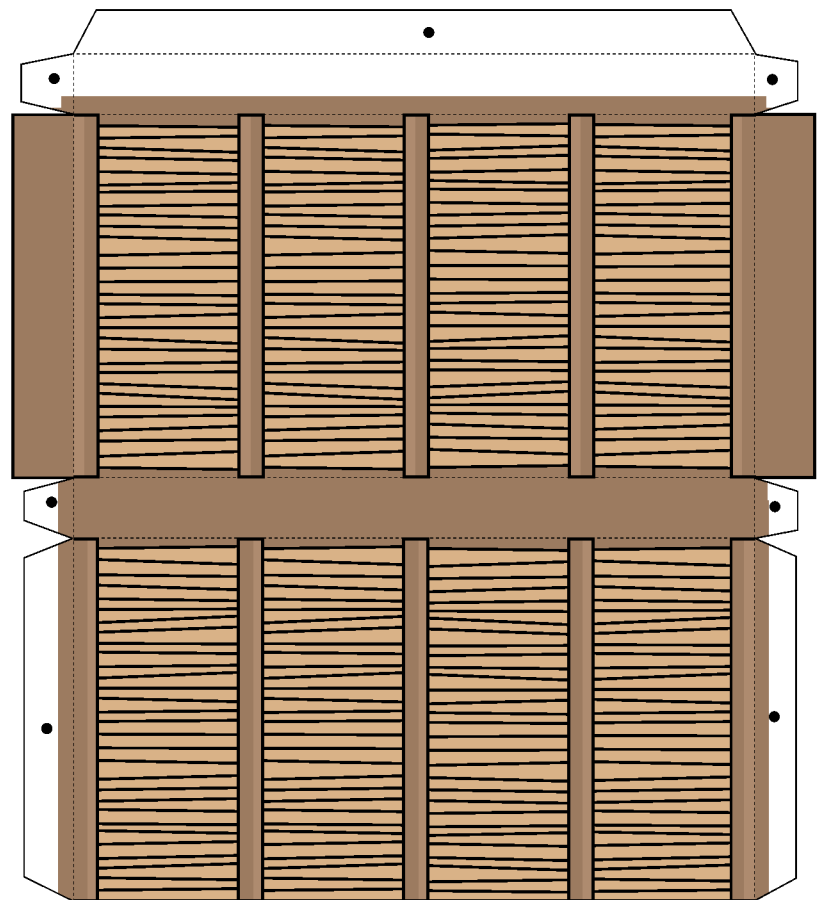
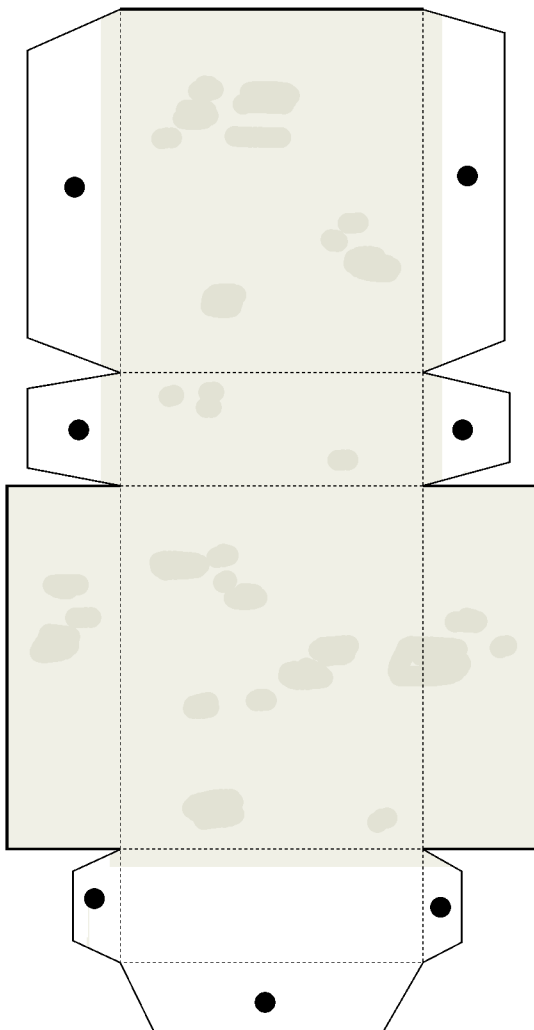
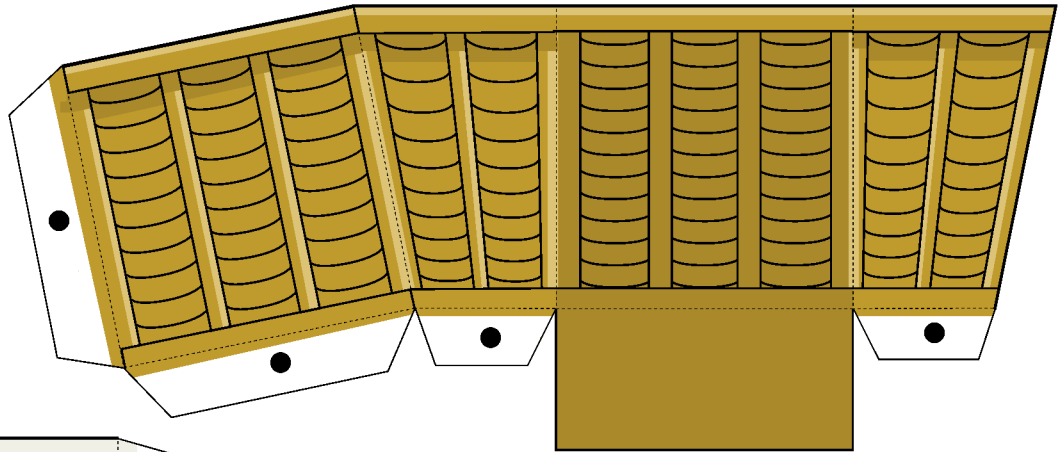


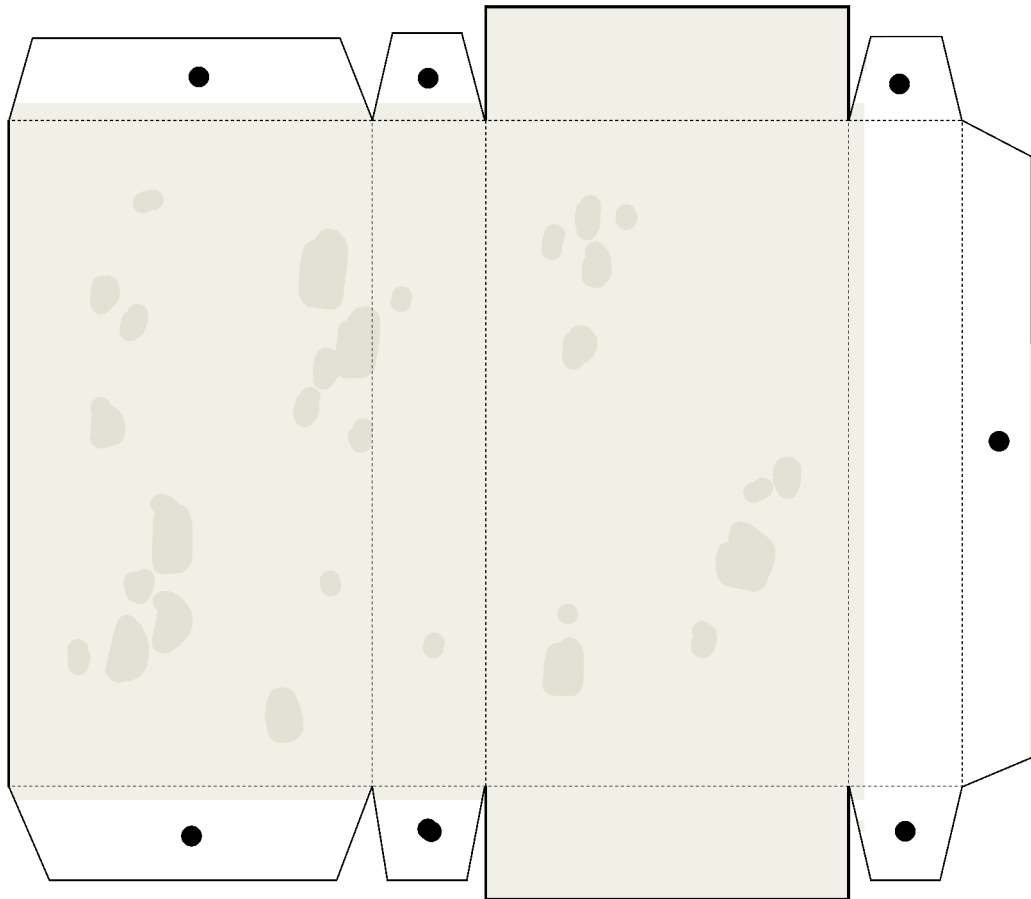


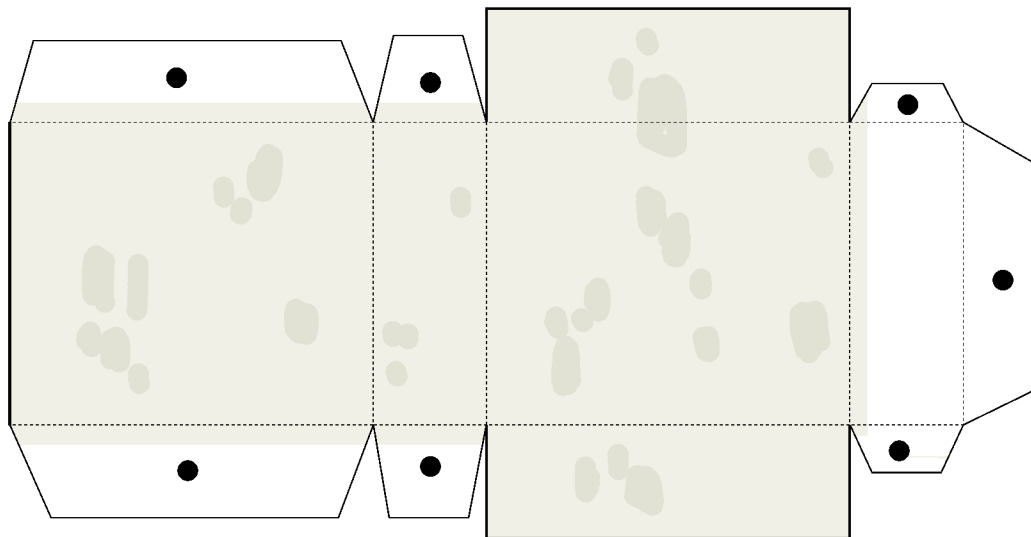


parts to  
attach the  
2 baskets  
together  
in order  
to place  
them on  
the back of  
the donkey  
(see cover  
photo)

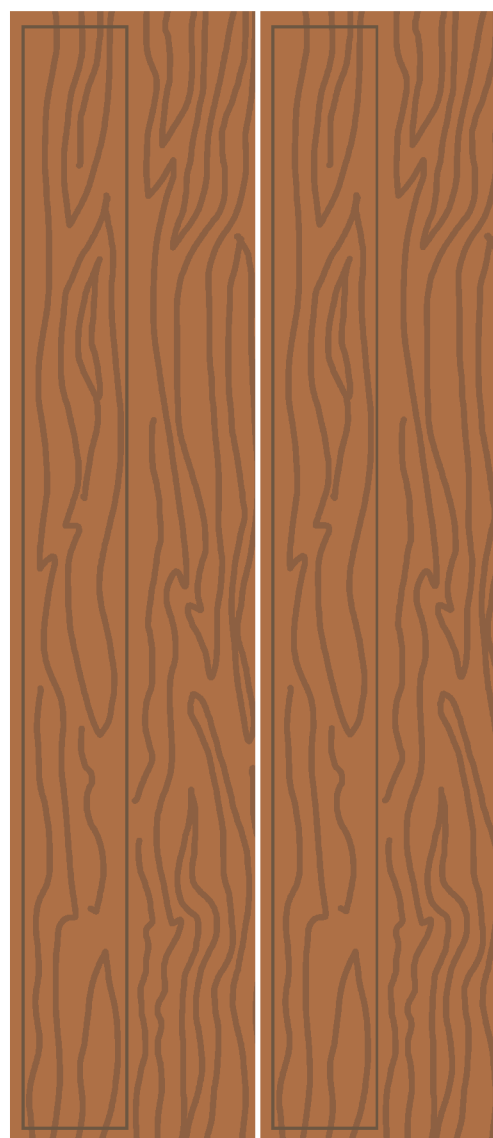
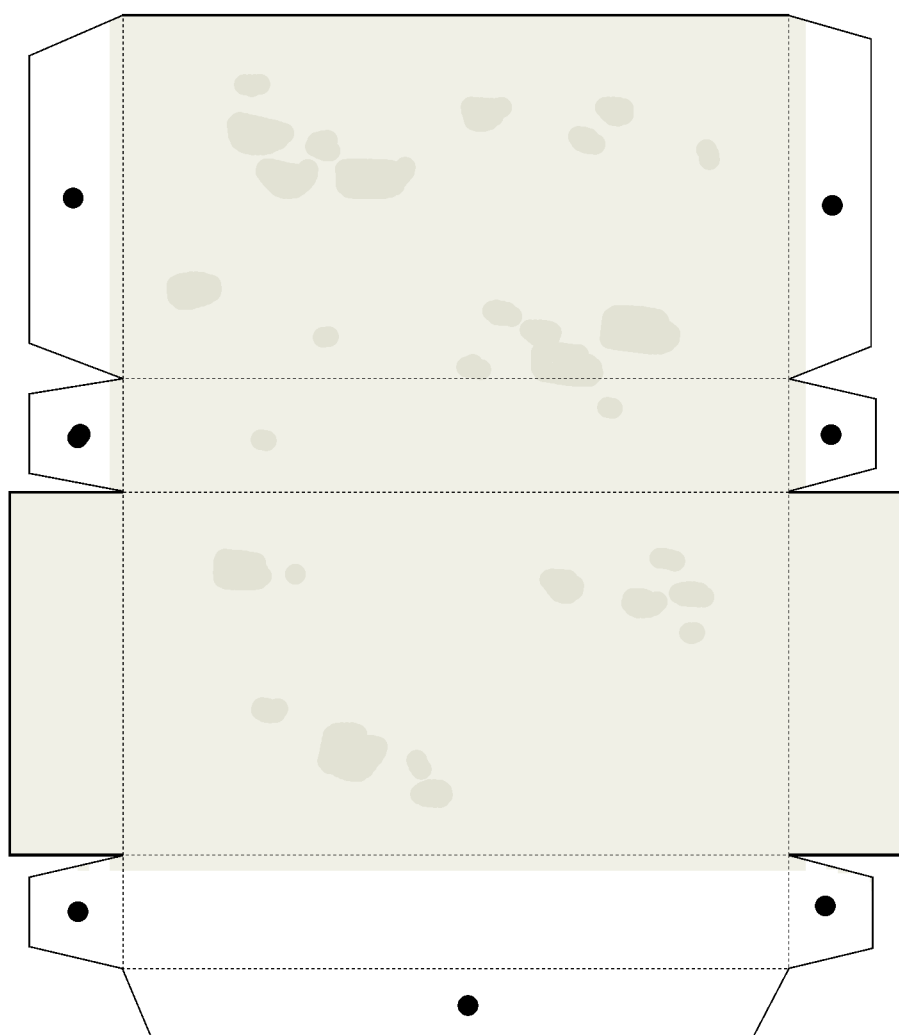
baskets to place  
on the back of the  
donkey



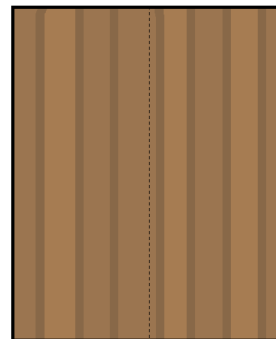
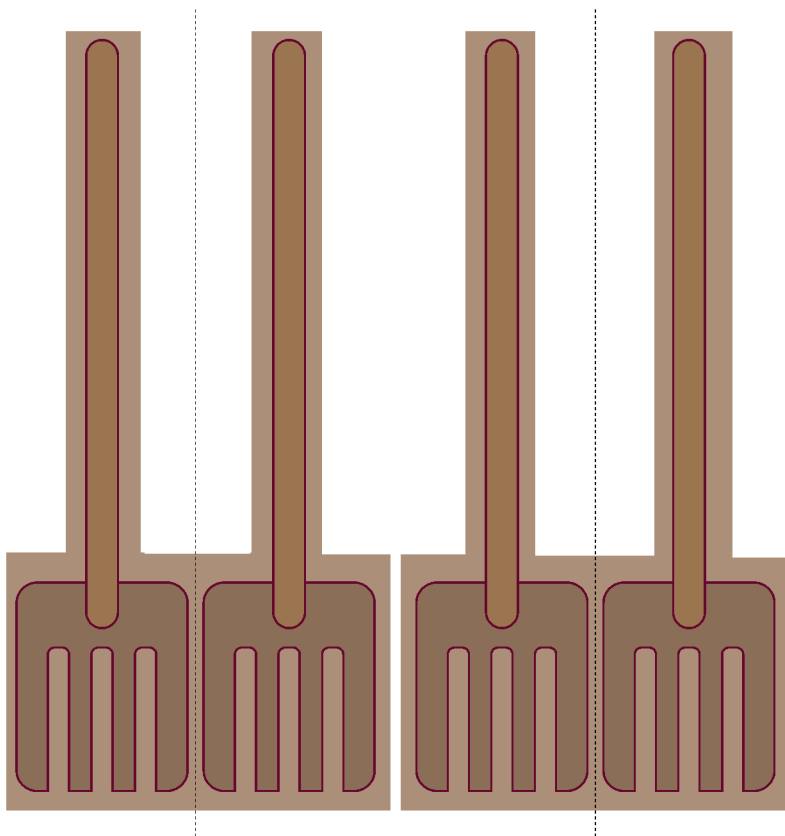
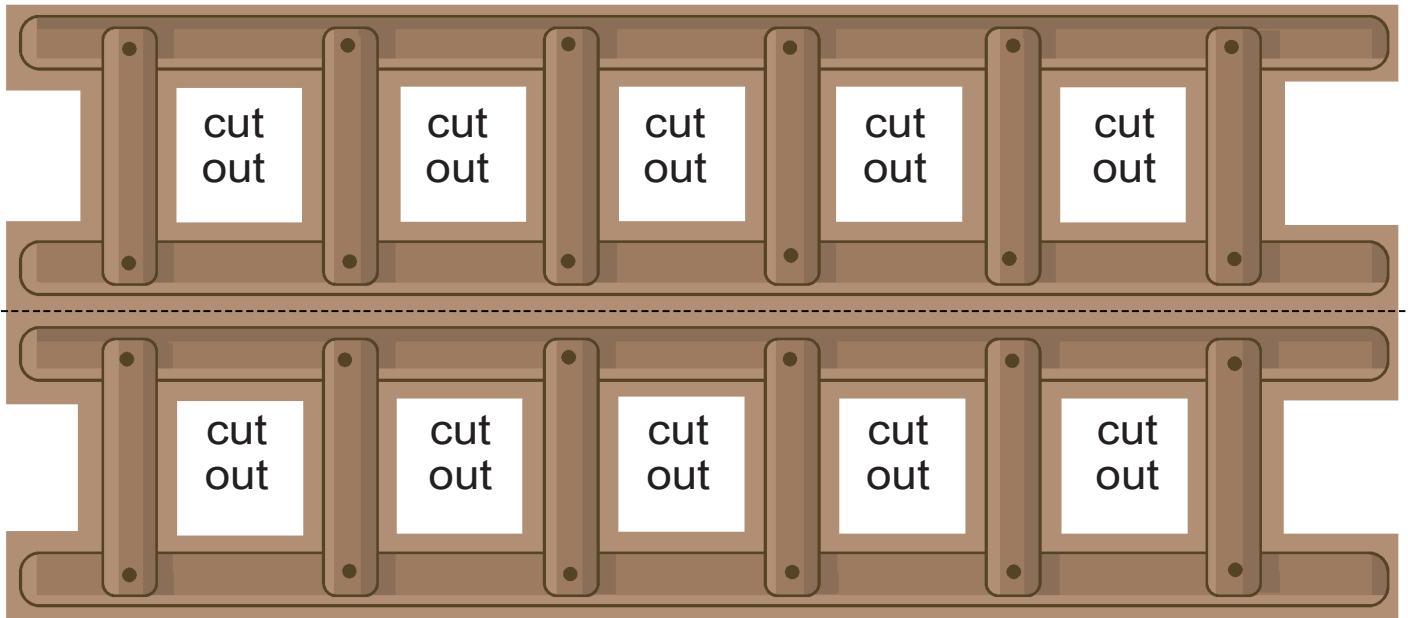




Fold in the middle and glue together before cutting along the black line of the plank.

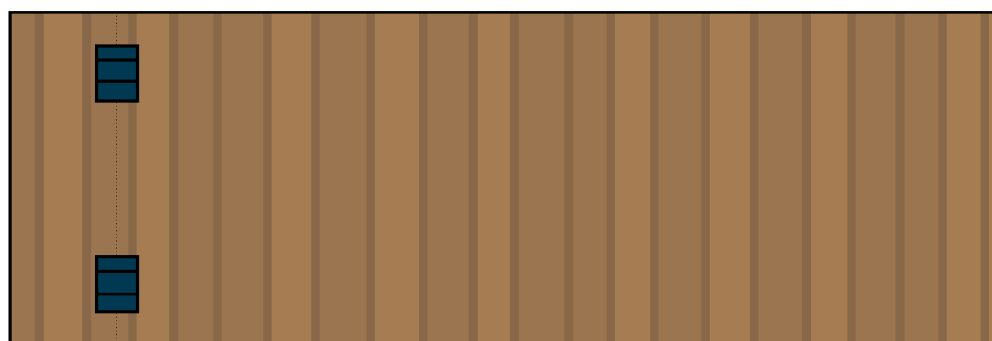






part for the door to  
fold and glue on  
a wall (see sheep  
pen house 2 for  
example)

Fold in the middle  
and glue together  
before cutting the  
pitchfork.

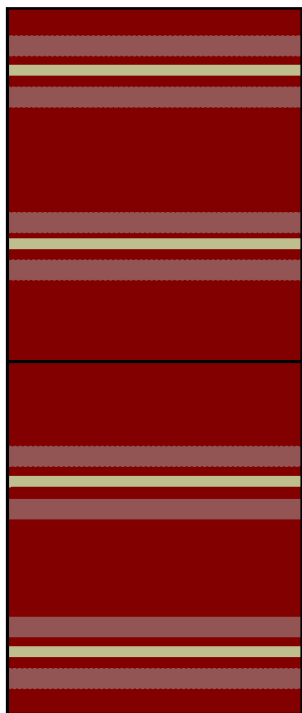


valley  
fold

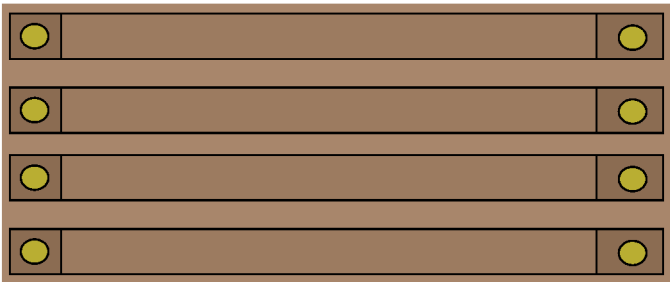
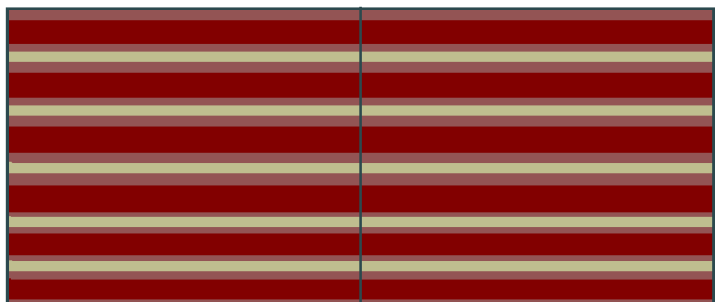
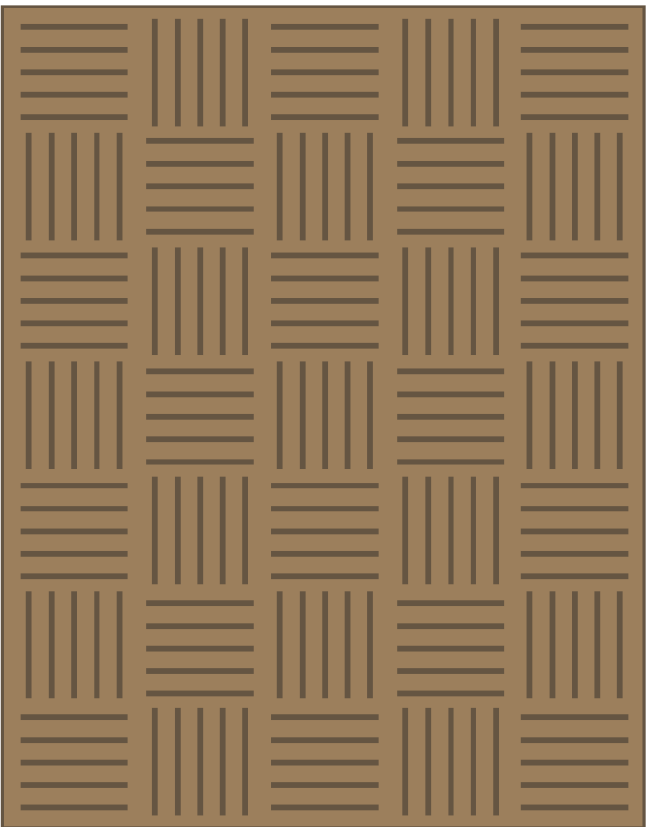
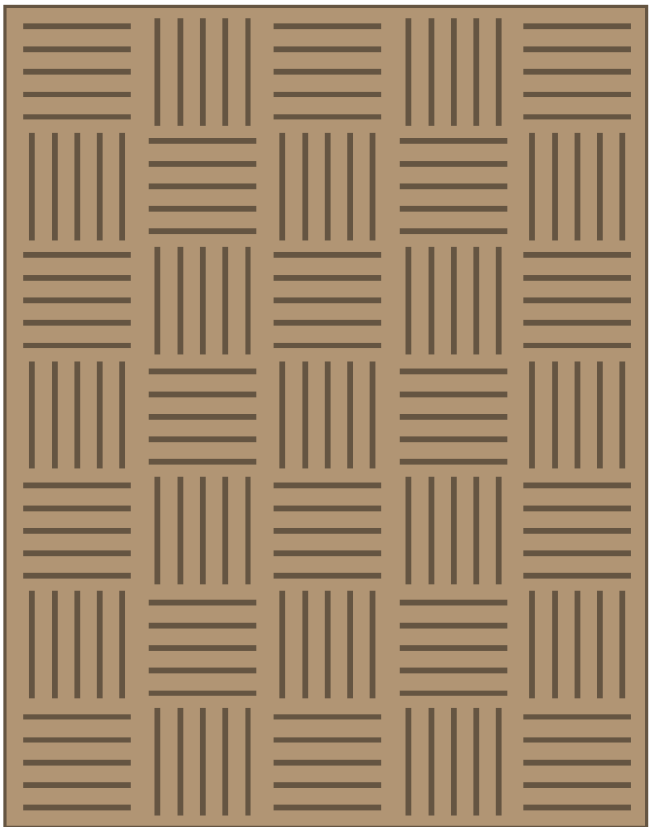
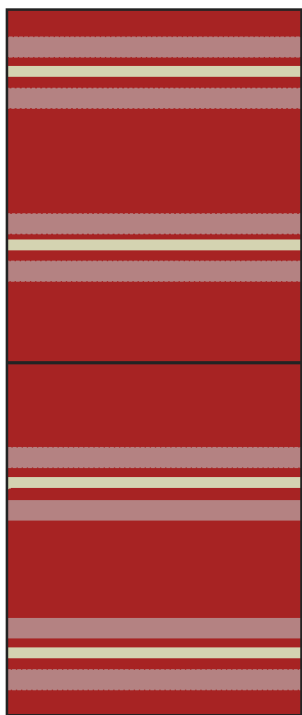
You can fold this part in two and glue the two parts together in  
any length according to what size you need to make your door  
(see sheep pen house 2 on how to assemble this door).

Fold in the middle  
and glue together  
before cutting along  
the black line of the  
plank.

Print this page on  
normal paper (not cardstock)



cloth material. You  
can use some of  
these for house 3  
for the laundry line



You can use these to hold a carpet after you have roll it  
(see cover photo for idea)

# ASSEMBLY INSTRUCTIONS

Print pages 1 through 9 on cardstock and follow the assembly instructions. Take your time and make sure all the parts line up properly before gluing. Just like anything else, it takes practice to get each model exactly right. But you'll find that the more models you work on the easier they become.

## Tools needed

- Small scissors. Small craft or manicure scissors work best.
- Hobby knife. Put in a sharp new blade, such as *X-acto* #10 or #11 for best results.
- Sturdy tweezers. Tweezers with rough edges or teeth will mar the surface of the pieces, so find a set with smooth edges.
- Straightedge or ruler. Preferably a metal one, to guide your knife in making a straight cut or score.
- Toothpicks or blunt dental tools for reaching into tiny corners and spreading drops of glue.
- White glue.
- Cutting surface. You can use a self-healing cutting mat, but a piece of cardboard will also work fine.
- "Dead" pen (no more ink) or blunt knife for scoring.

**TIP: After cutting out the parts and folding the tabs, make sure the parts fit together before gluing them. Refer to the picture of the final model to see how the different parts fit together.**



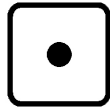
Cut lines



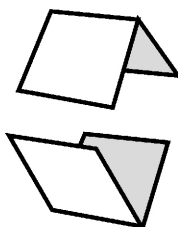
Mountain fold



Valley fold



Glue spot



## Scoring

Score the fold lines to make a crisp straight fold. It's especially important for the smallest pieces to be scored before folding. To score, place a metal ruler along the fold line, and then press with a dull point along the fold line to compress the paper.

## CAUTION

- **Be careful when using scissors or hobby knife.**
- **Glue, scissors, and other tools may be dangerous to young children so be sure to keep them out of the reach of young children.**

## Cutting

Usually, a part of a card model is cut in two stages. First, the part is separated from the rest of the parts by cutting roughly around it with scissors. Don't cut on the lines at this step. Once the part is separated, you can work on it without damaging other parts. Often, it's best to do the scoring and folding before proceeding to the fine cutting. With small parts and narrow tabs, it's easier to fold them neatly while there is still waste paper around the part.