

Canon Pop-up Card (Chocolate-box) : Assembly Instructions

Canon® is a registered trademark of Canon Inc. © HIROKO



Assembly Instructions

..... **Mountain fold**(dotted line) ——— **Scissors line**(solid line)
*Make a mountain fold. *Cut along the line.

- - - - - **Valley fold**
(dashed and dotted line)
*Make a valley fold. ——— **Cut in line**(solid line)
*Make a cut.

△ **Triangle**
Glue here.



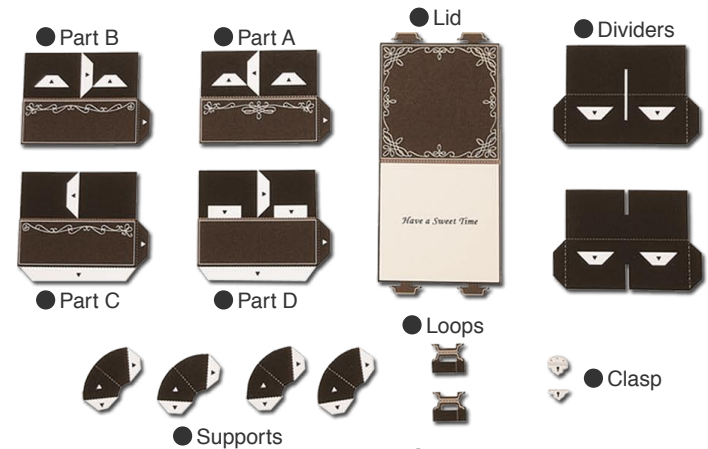
scissors, paste, a used ballpoint pen (tracing along the fold lines makes them easier to fold)



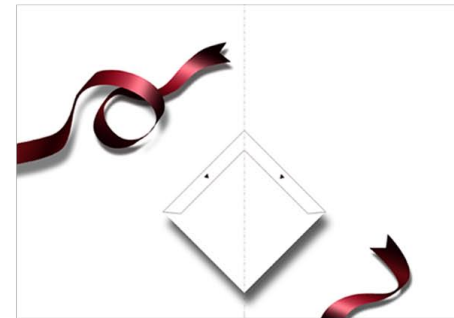
Caution: Glue, scissors, and other tools may be dangerous to young children so be sure to keep them out of the reach of young children.

1

Cut out the parts and crease them along the fold lines indicated.
(Parts A to D, the lid, loops and front cover all come in different colors so that you can choose the ones you prefer.)



● Base



● Cookie



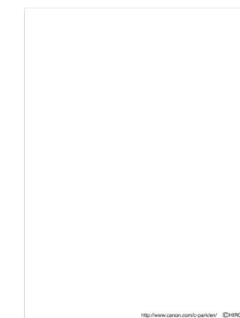
● Chocolate



● Front cover



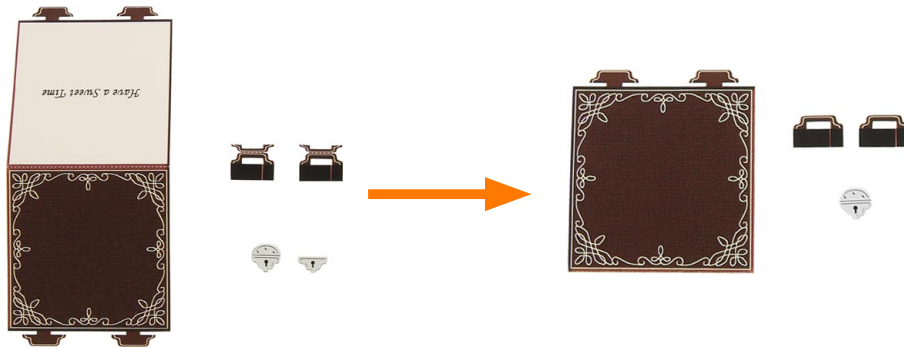
● Back cover



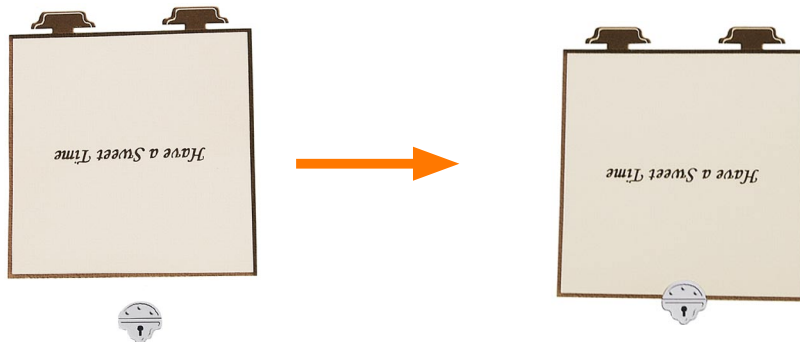
Canon Pop-up Card (Chocolate-box) : Assembly Instructions

Canon® is a registered trademark of Canon Inc. © HIROKO

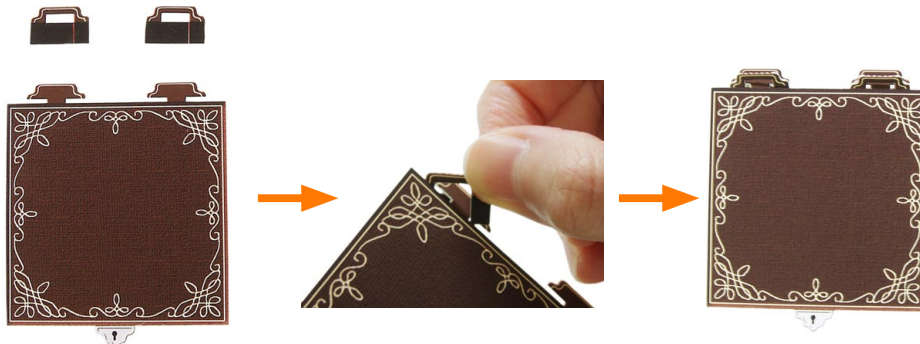
- 2** Fold the lid and loops along the fold lines and glue together at the back. Match up the clasp with the handle and glue together at the back. (Stick on the loops after cutting away the inner parts.)



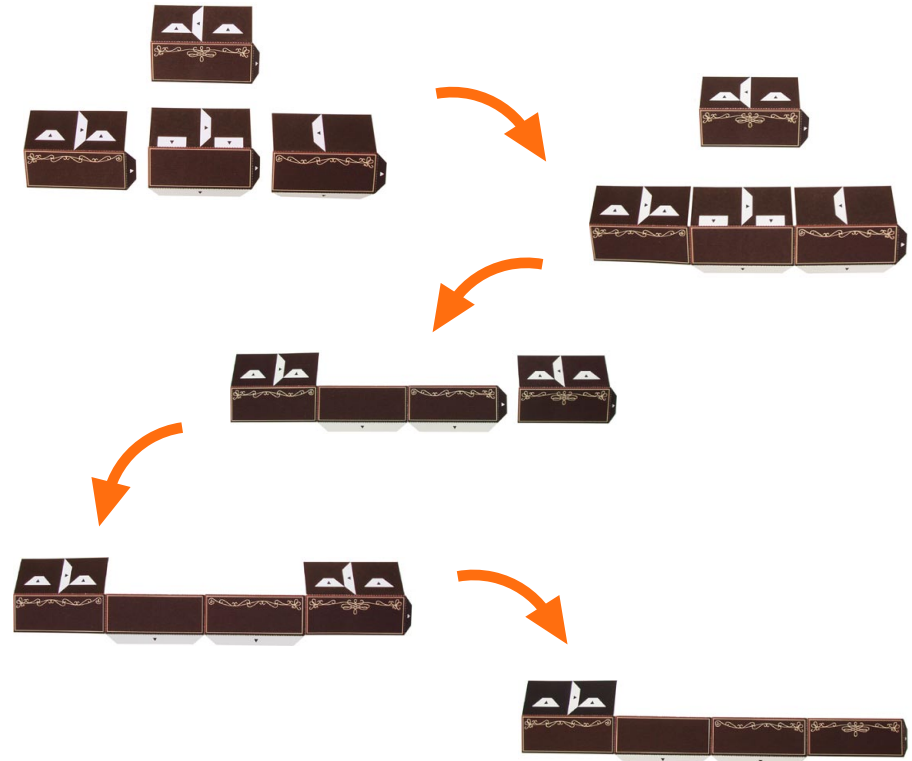
- 3** Turn over the lid and stick on the clasp.



- 4** Attach the loops by passing them under the tabs on the lid.



- 5** Join up parts B to D. Fold C and D along the fold lines and then glue together at the back. Join up parts A and C and glue at the back in the same way.



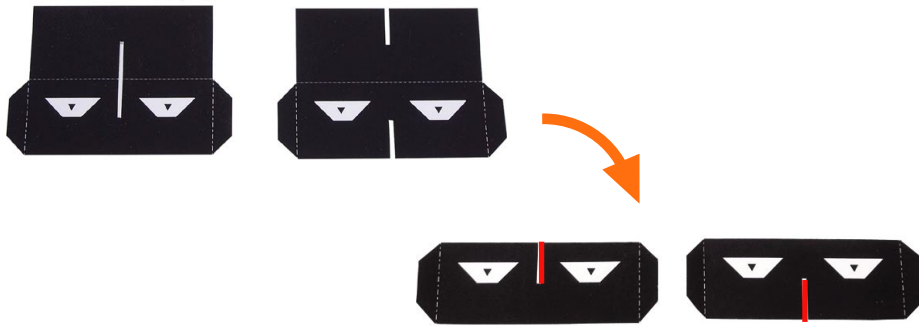
- 6** Join up parts A and B, then fold part B along the fold line and glue together at the back.



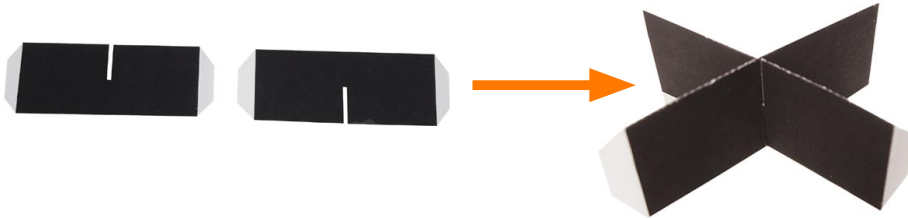
Canon Pop-up Card (Chocolate-box) : Assembly Instructions

Canon® is a registered trademark of Canon Inc. © HIROKO

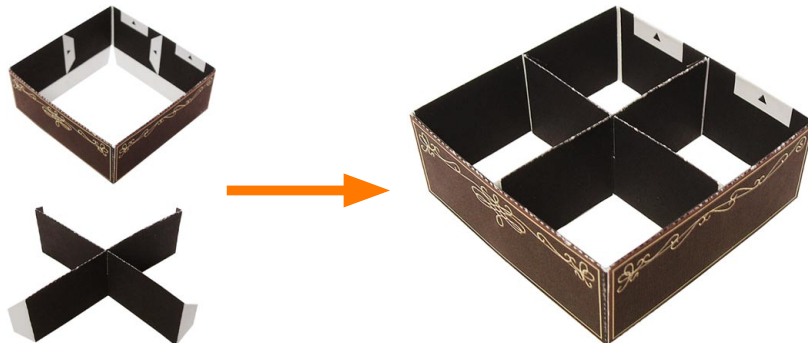
- 7** Fold the dividers along the fold lines and glue together at the back. Make a cut-in along the line shown in red.



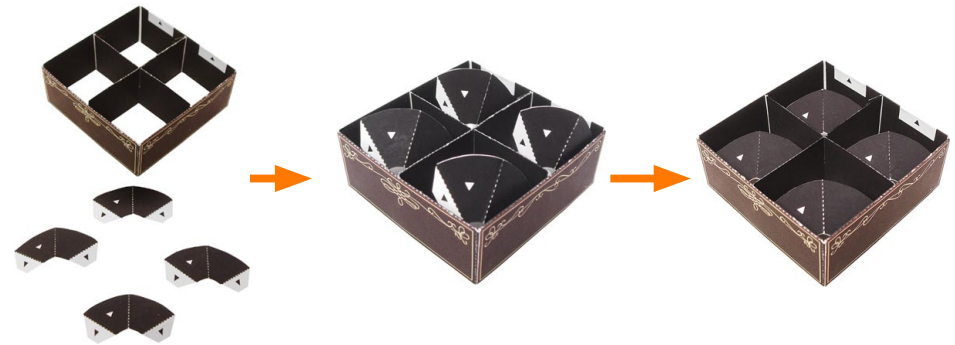
- 8** Turn assembly 7 over and fit the cut-ins together.



- 9** Fit assembly 6 into assembly 8, and glue at the glue tabs.



- 10** Glue one supporter into each square in assembly 9.



- 11** Join assembly 4 to assembly 10 with the glue tabs of the loops.



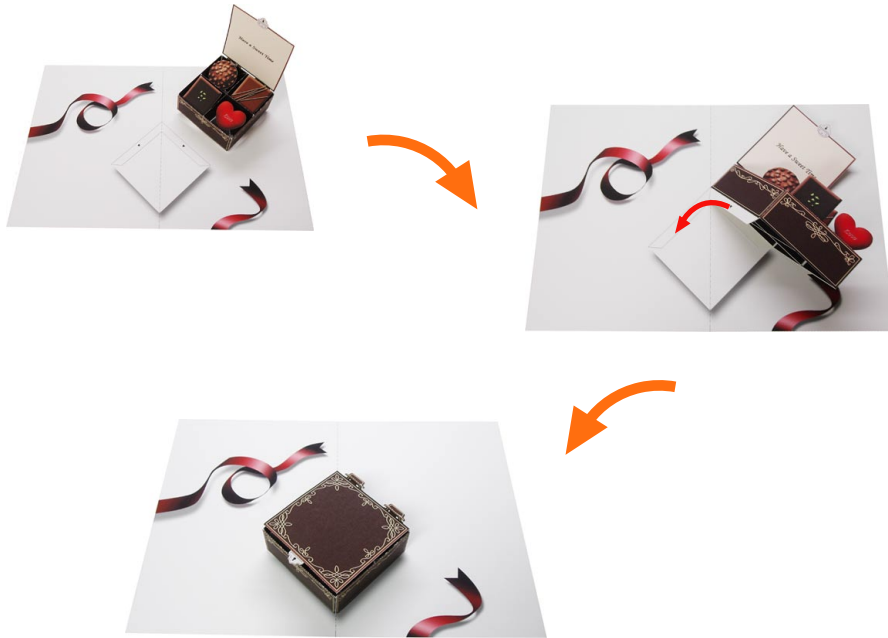
- 12** Stick your favorite chocolates or cookies into the compartments in the box.



Canon Pop-up Card (Chocolate-box) : Assembly Instructions

Canon® is a registered trademark of Canon Inc. © HIROKO

13 Stick one assembly 12 at each side of the backing sheet.



15 Complete!



14 Paste the colored front cover onto the back of the left hand side of the base. Finally, paste the back cover onto the back of the right hand side of the base.

