

Canon CRAFTOWN : House (Christmas) [Assembly instructions]

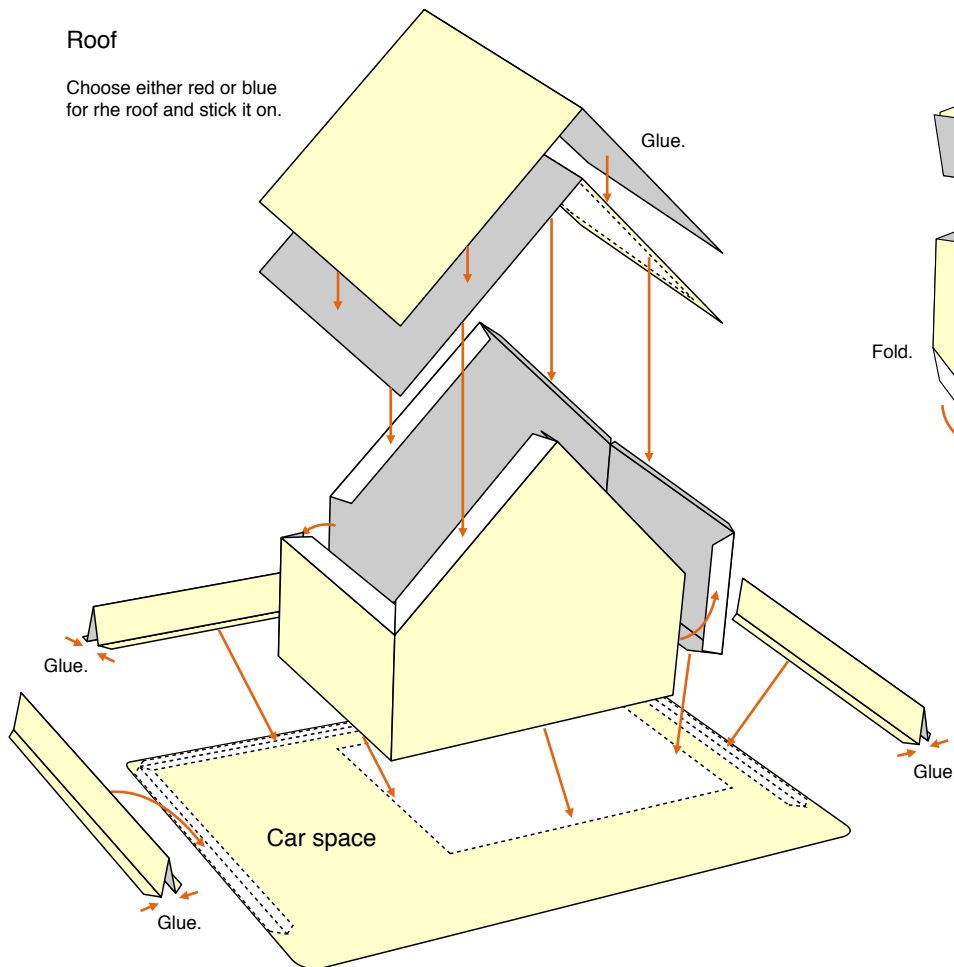
Canon ® is a registered trademark of Canon Inc. © Canon Inc. © Hiroshi Chiba / PAPERART-C



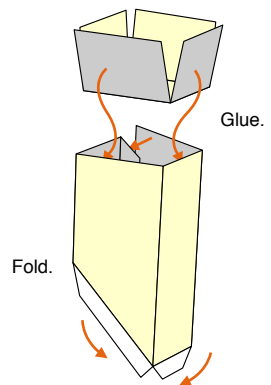
1

Roof

Choose either red or blue for the roof and stick it on.



Chimney



Assembly



Cut line

Cut along the line.



Mountain fold

Make a mountain fold along the line.



Valley fold

Make a valley fold along the line.



Glue spot

Glue together.

You will need

scissors, ruler, glue (we recommend woodwork glue)

Assembly tip

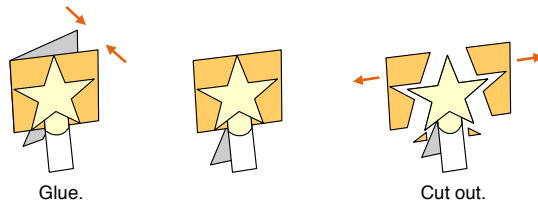
Fold along the mountain fold and valley fold lines to make creases.

Caution

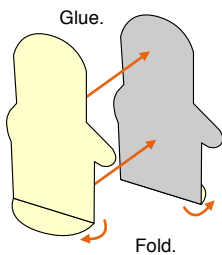
Be very careful when handling scissors. □
Keep glue away from small children.

②

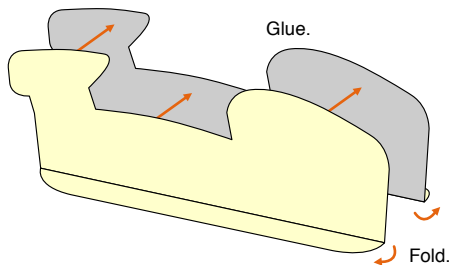
Christmas tree



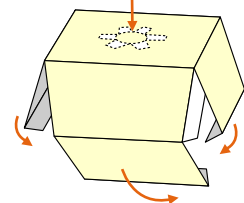
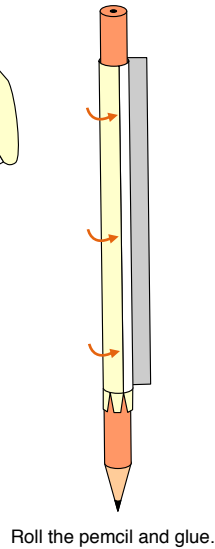
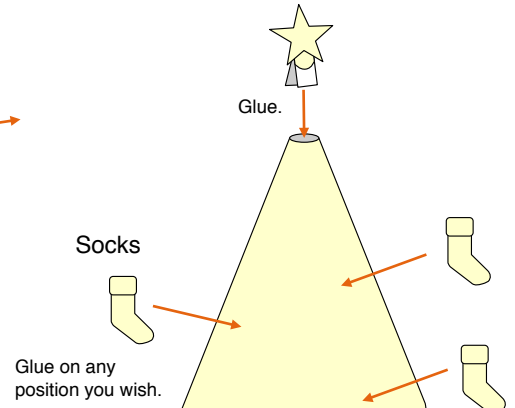
Santa Claus



Reindeer and sled



Socks



Assembly



Cut line

Cut along the line.



Mountain fold

Make a mountain fold along the line.



Valley fold

Make a valley fold along the line.



Glue spot

Glue together.

You will need

scissors, ruler, glue (we recommend woodwork glue)

Assembly tip

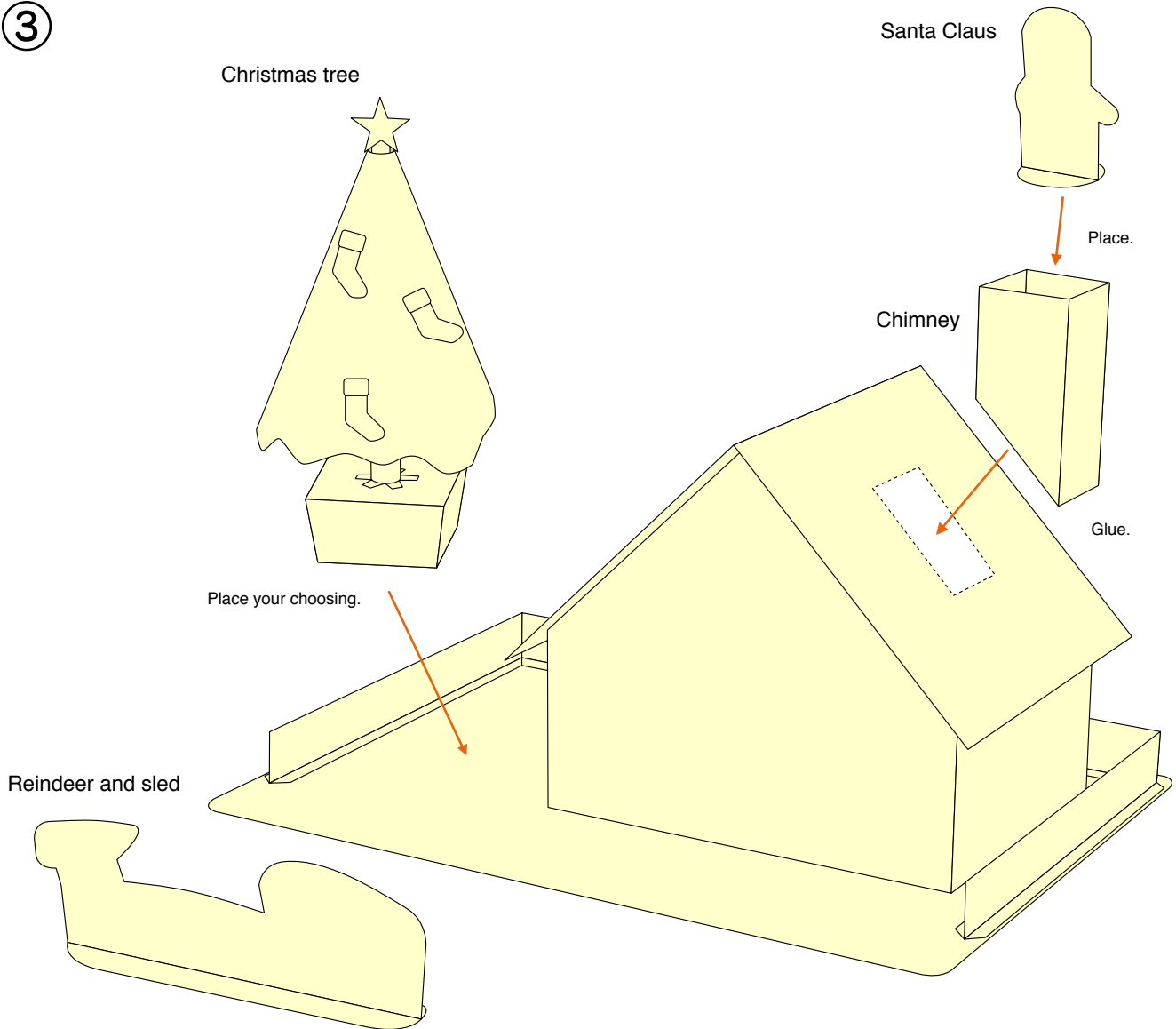
Fold along the mountain fold and valley fold lines to make creases.

Caution

Be very careful when handling scissors. □
Keep glue away from small children.



③



Assembly



Cut line

Cut along the line.



Mountain fold

Make a mountain fold along the line.



Valley fold

Make a valley fold along the line.



Glue spot

Glue together.

You will need

scissors, ruler, glue (we recommend woodwork glue)

Assembly tip

Fold along the mountain fold and valley fold lines to make creases.

Caution

Be very careful when handling scissors. □
Keep glue away from small children.