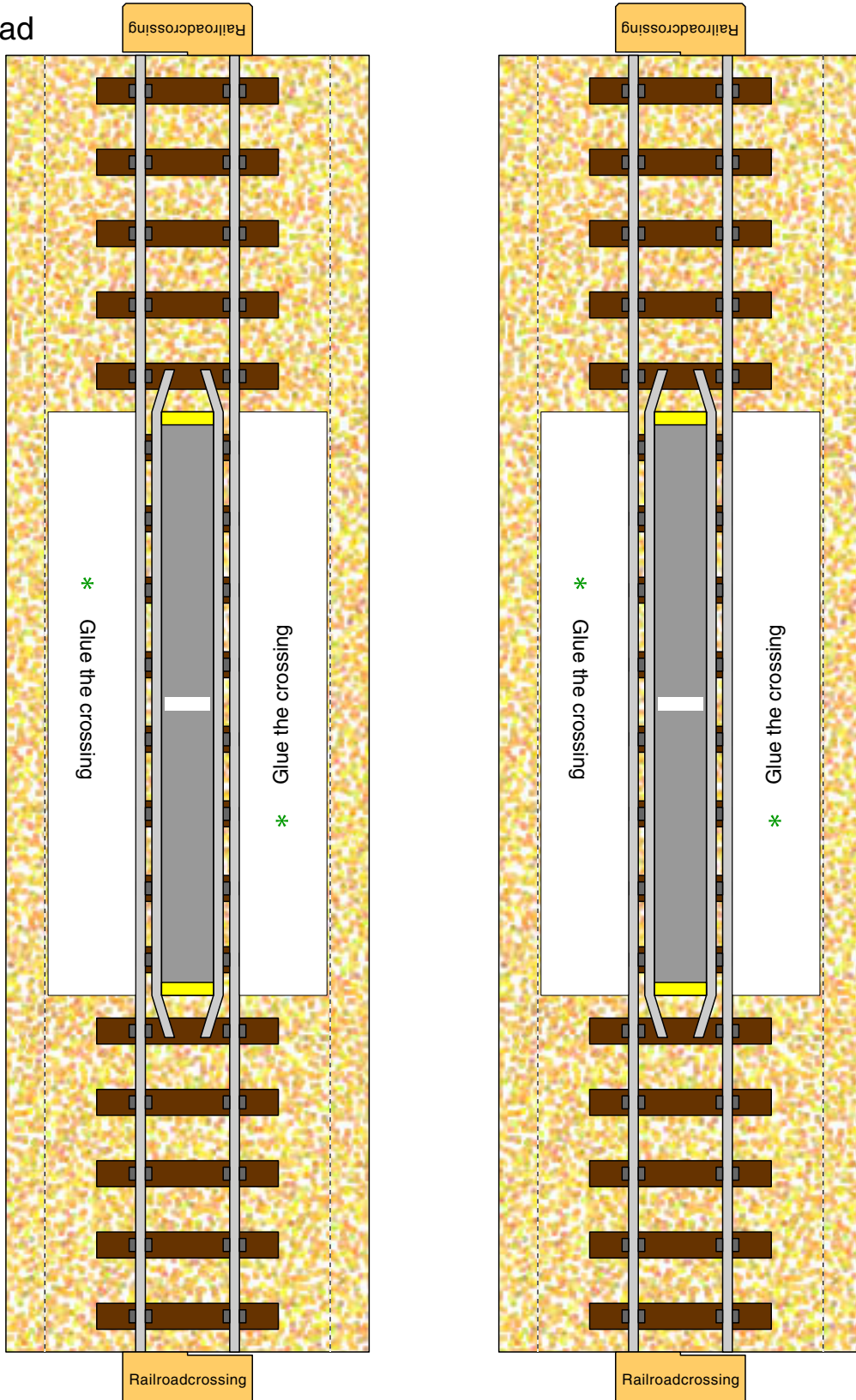




----- Mountain fold

* Glue spot

① Railroad

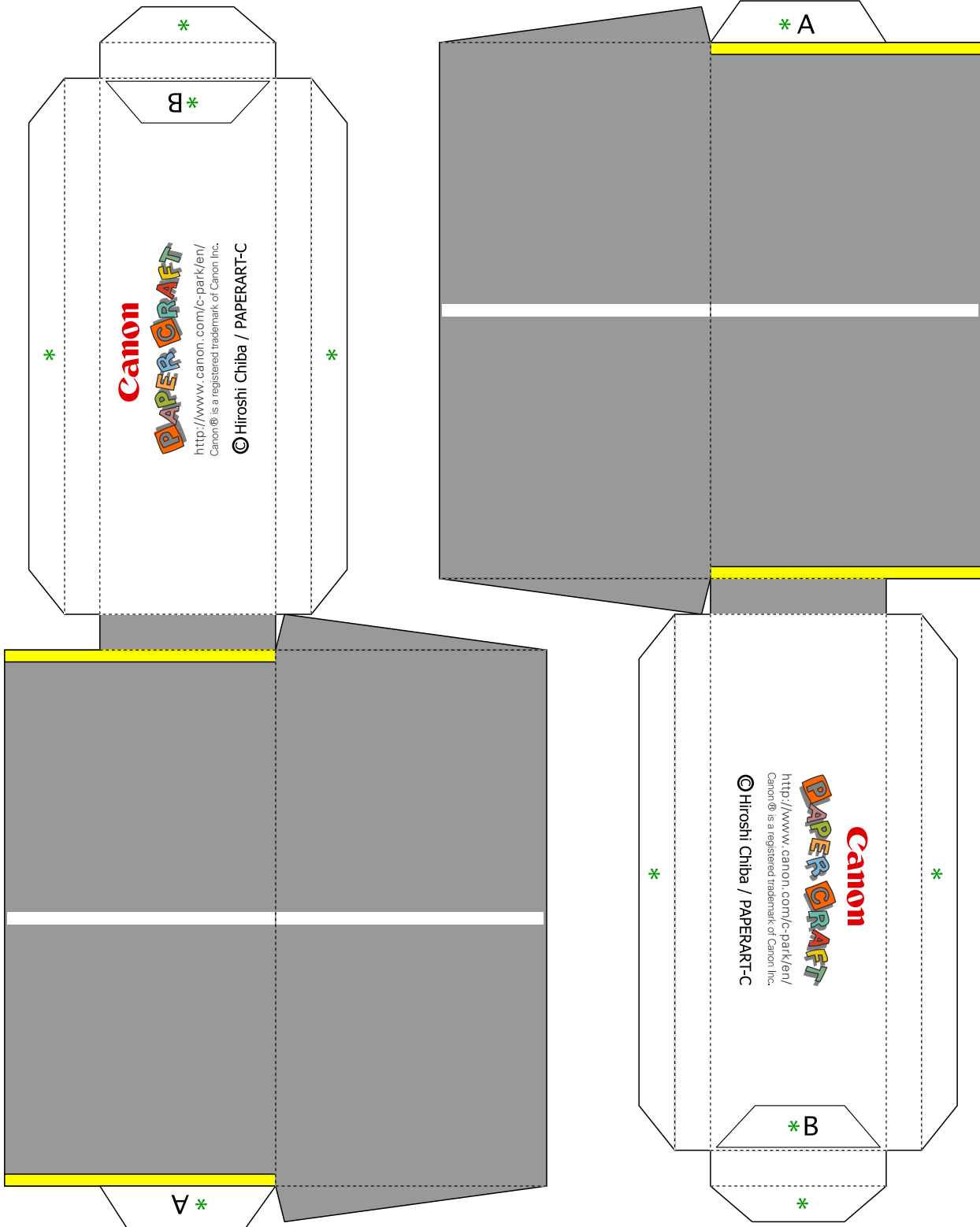




----- Mountain fold

□ * □ Glue spot

② Railroadcrossing tread

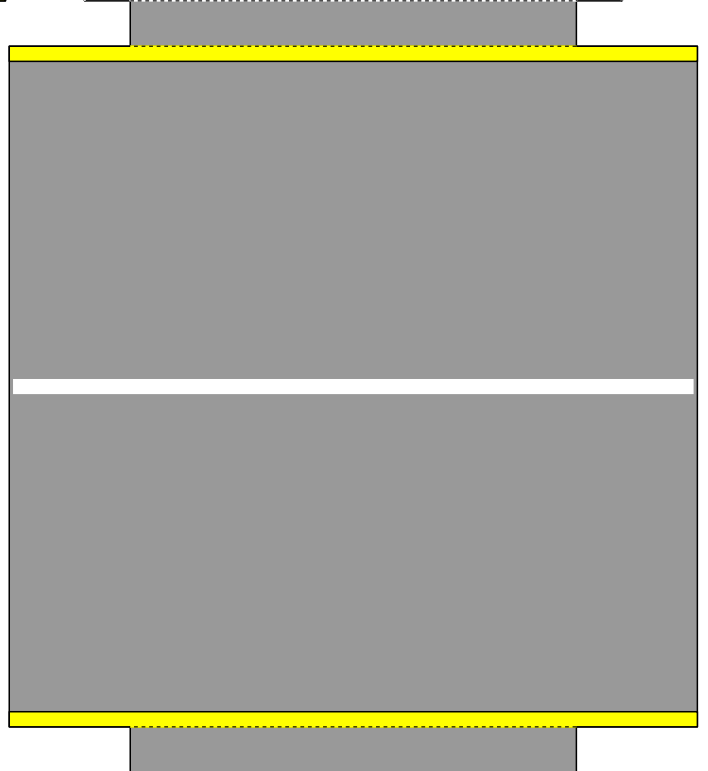
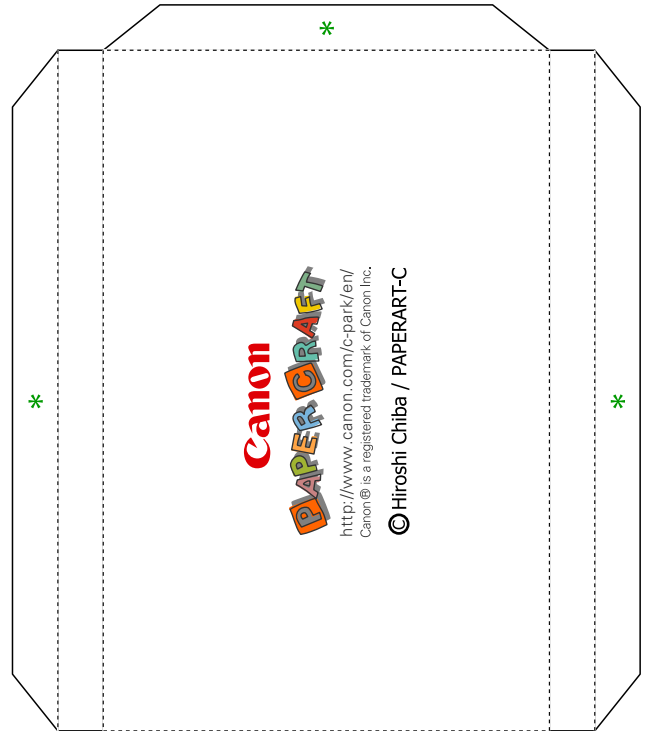
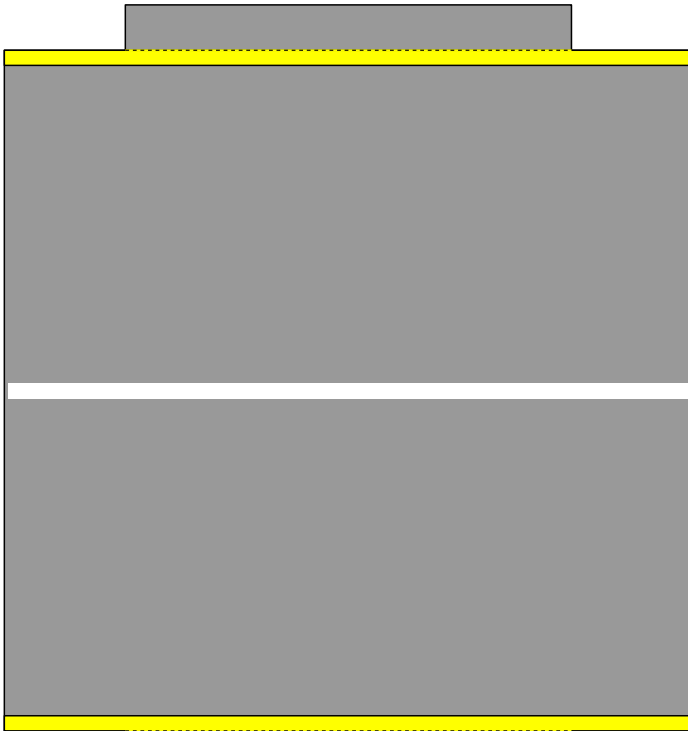




----- Mountain fold

Glue spot

③ Railroadcrossing tread for dual track





<http://www.canon.com/c-park/en/>

----- Mountain fold

- - - - - Valley fold

Glue spot

④ Signal and Barrier

