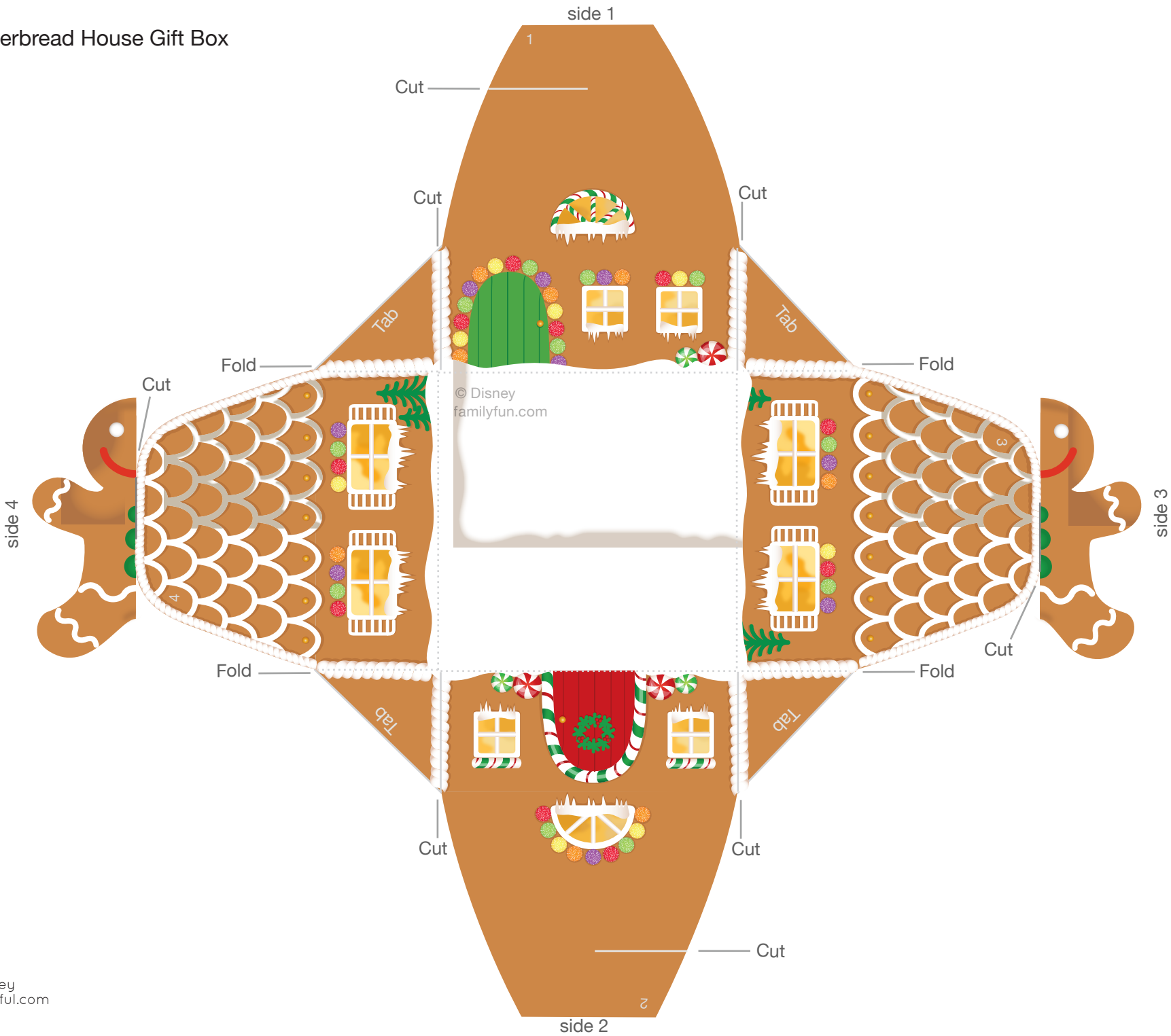


Gingerbread House Gift Box



Gingerbread House Gift Box - Instructions

1. Print out the Holiday Gift Box on cardstock or regular paper. With a craft knife, cut four slits (on sides 1-4) along the four solid lines on the candy box template. Do not cut any further than the solid line goes.
2. Fold along all dotted lines, away from you. Once you have all the long horizontal lines folded, you can work on the corners. Cut the solid grey line at each corner tab, one line per corner. Fold along the dotted line at each corner, one dotted line per corner. Glue the tab to the back of the opposite side. The box will begin to take shape. Next, connect the two slits from sides 1 and 2, then connect the slits from sides 3 and 4. The gingerbread man will adorn the top of your Gift Box.