

# Miniature Pig

Small pigs that were developed to sizes of 100kg or less are known as "miniature pigs". Most miniature pigs trace their roots to Vietnam, and are said to be descendents of breeds such as the pot-bellied pig or the Gottingen. This paper craft model is based on the Gottingen, a popular miniature pig kept as a pet.



● Front



● Side



● Back



\*Assembly instructions on pages 1 and 2, and pattern on page 3.

## ★ Assembly Instructions

- 1) Carefully cut out the parts.
- 2) Fold along the dotted lines, making mountain or valley folds as indicated.
- 3) Follow the order indicated in the instructional diagrams, and attach the parts to assemble.  
(Read the Explanation of Symbols for more information.)
- 4) Your paper craft model is finished!

## ★ Tools

Scissors, glue (We recommend craft glue.)

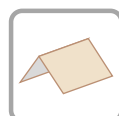
## ★ Caution

Keep scissors and glue away from small children.  
Be careful not to cut your fingers when using scissors.  
Fold the folding lines before gluing.

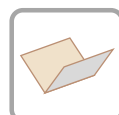
## ★ Explanation of Symbols



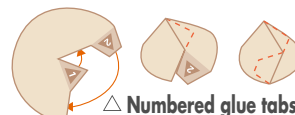
Cut line



Mountain fold



Valley fold



△ Numbered glue tabs

Glue the parts together in the order indicated by the numbers.

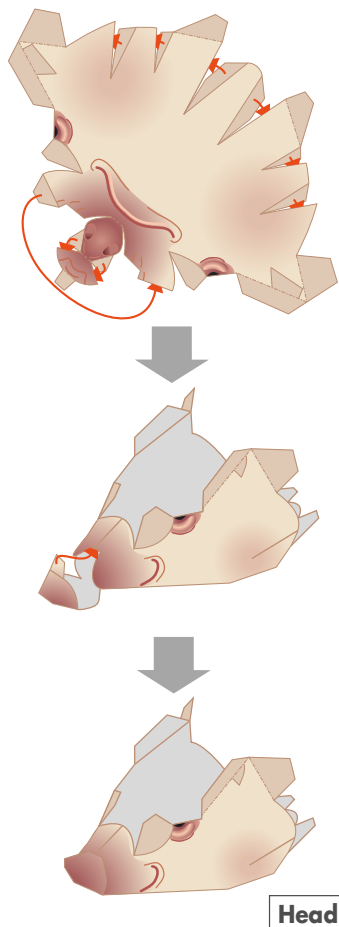


△ Glue tabs with symbols and part names

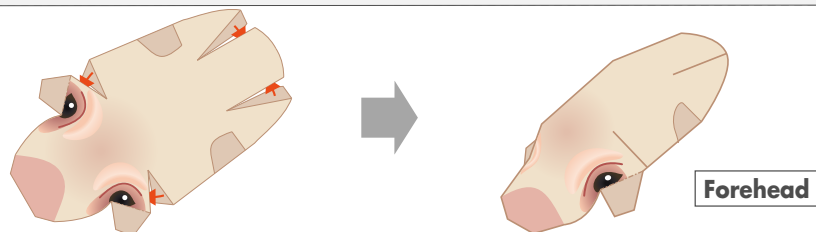
These tabs are to be glued onto the matching parts, which name is indicated on the tab.

★ Assembling the Miniature Pig

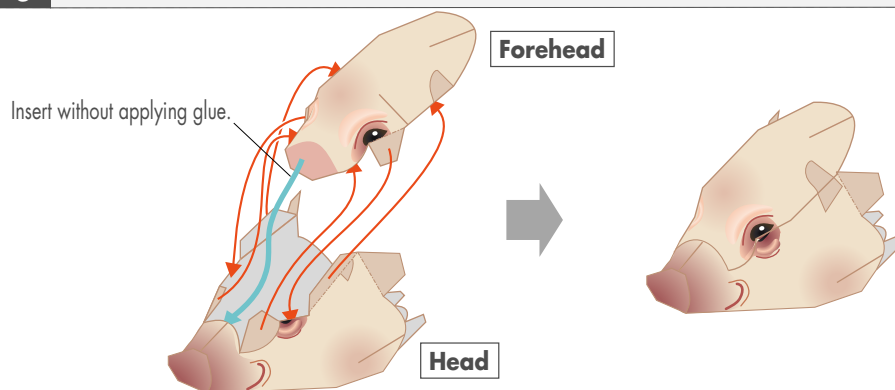
1 Assemble the head



2 Assemble the forehead

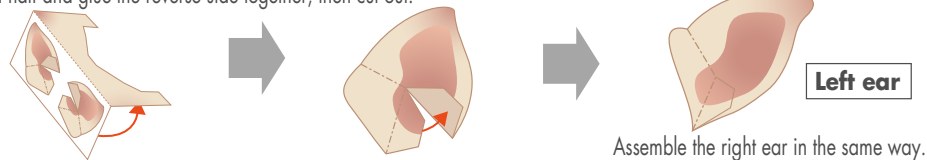


3 Attach the head and forehead

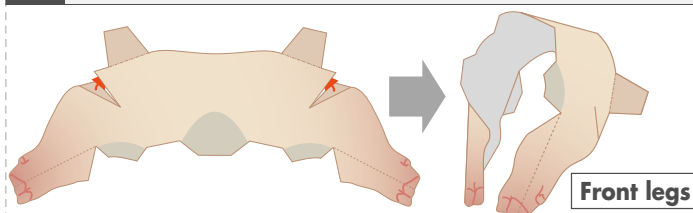


4 Assemble the ears (right and left)

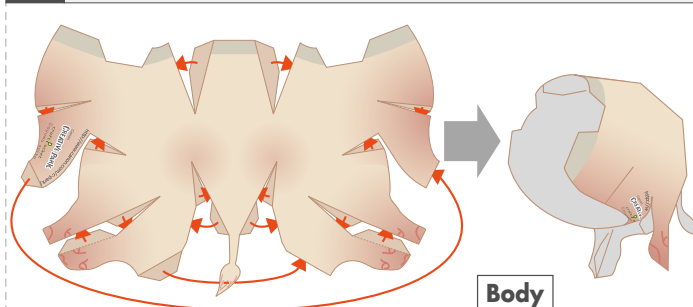
Fold in half and glue the reverse side together, then cut out.



5 Assemble the front legs



6 Assemble the body



7 Assemble the whole body

