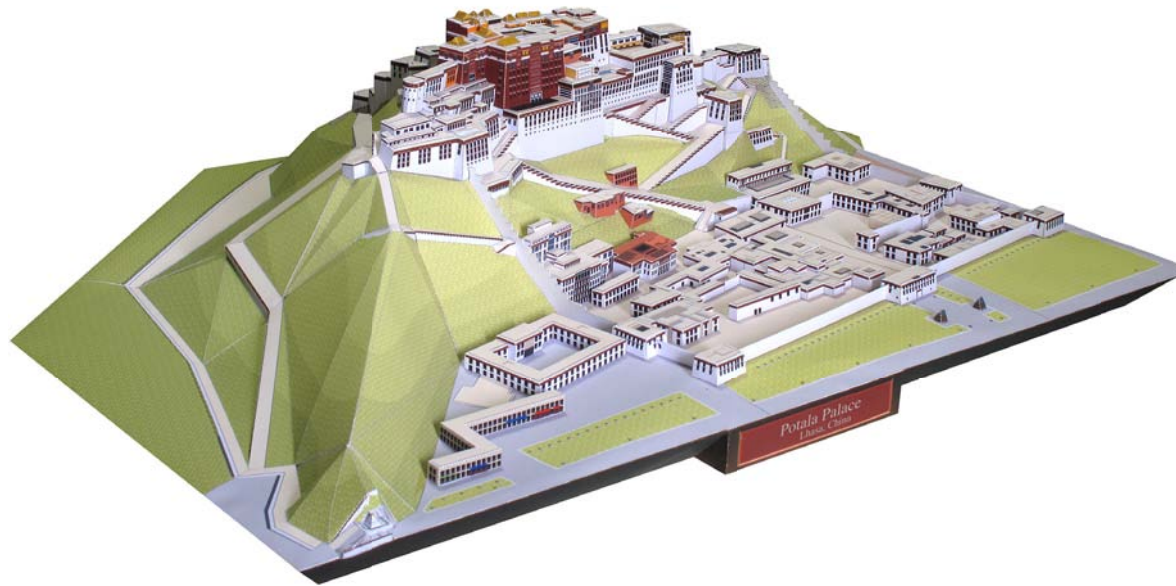


## CREATIVE PARK

<http://www.canon.com/c-park/>



View of completed model

### Potala Palace, China

Potala Palace is a Tibetan palace built on the top of the Marpo Ri (Red Mountains in Tibetan). Dalai Lama the Fifth who unified this region began the construction and the successive generations of Dalai Lama repeated extensive constructions. The present structure was completed in the 20th century. The Red Palace that serves as a mausoleum of Dalai Lama and the White Palace for residence and administrations are placed at the center, and watchtowers stand at the four corners of the structures along hillside to add a role of a fortress to this ensemble.

\* This model was designed for Papercraft and may differ from the original in some respects.

■ Parts list (pattern) : Twenty nine A4 sheets (No. 1 to No. 29)

■ No. of Parts : 240

\* Build the model by carefully reading the Assembly Instructions, in the parts sheet page order.



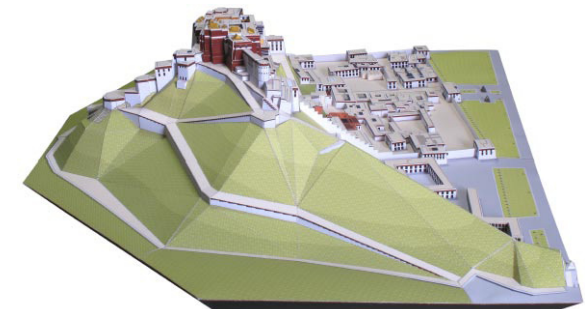
Front side (South face)



Right lateral (East face)



Back side (North face)



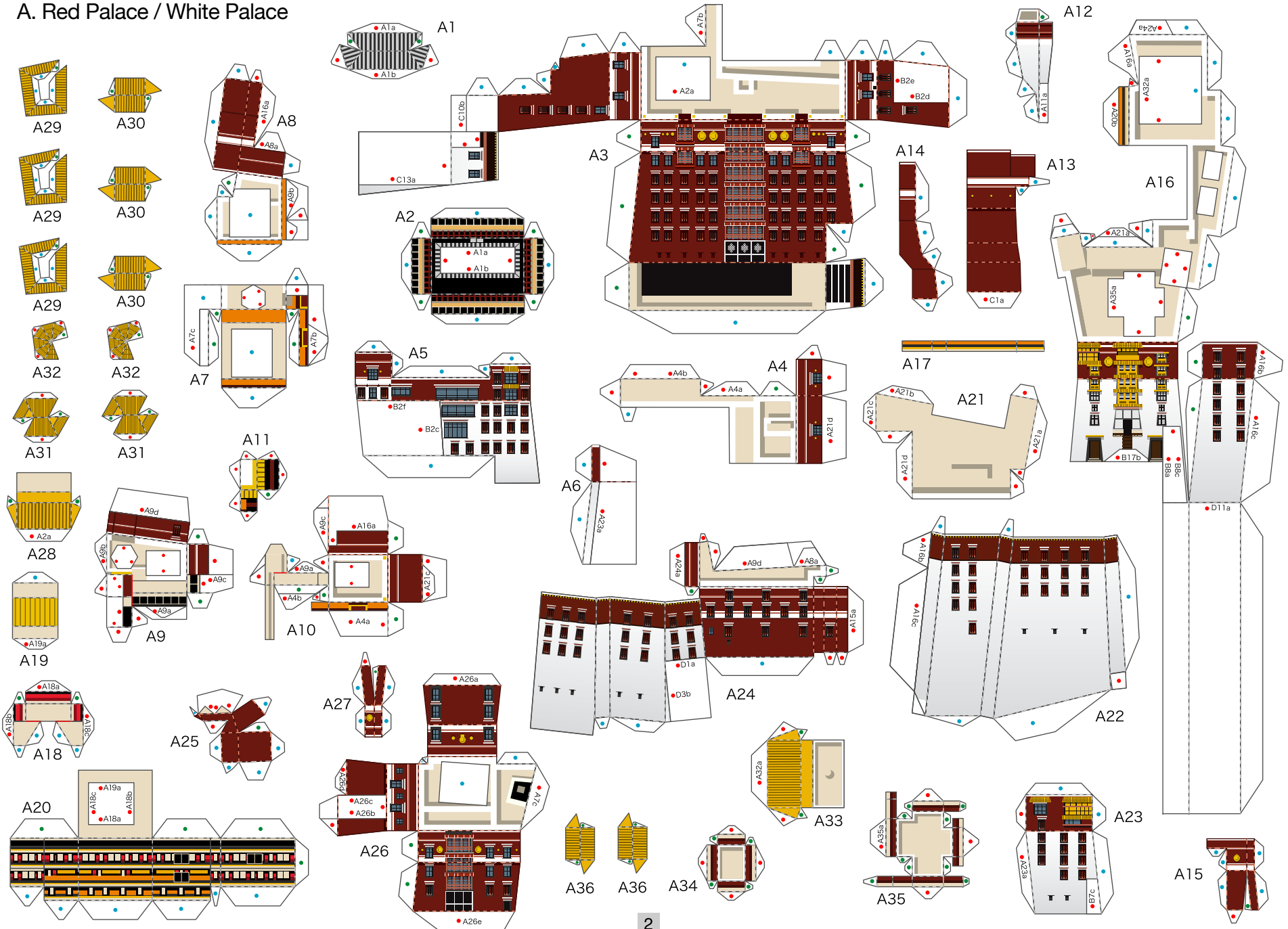
Left lateral (West face)

# Potala Palace, China : Pattern

© Canon Inc. © T.Ichiyama



## A. Red Palace / White Palace

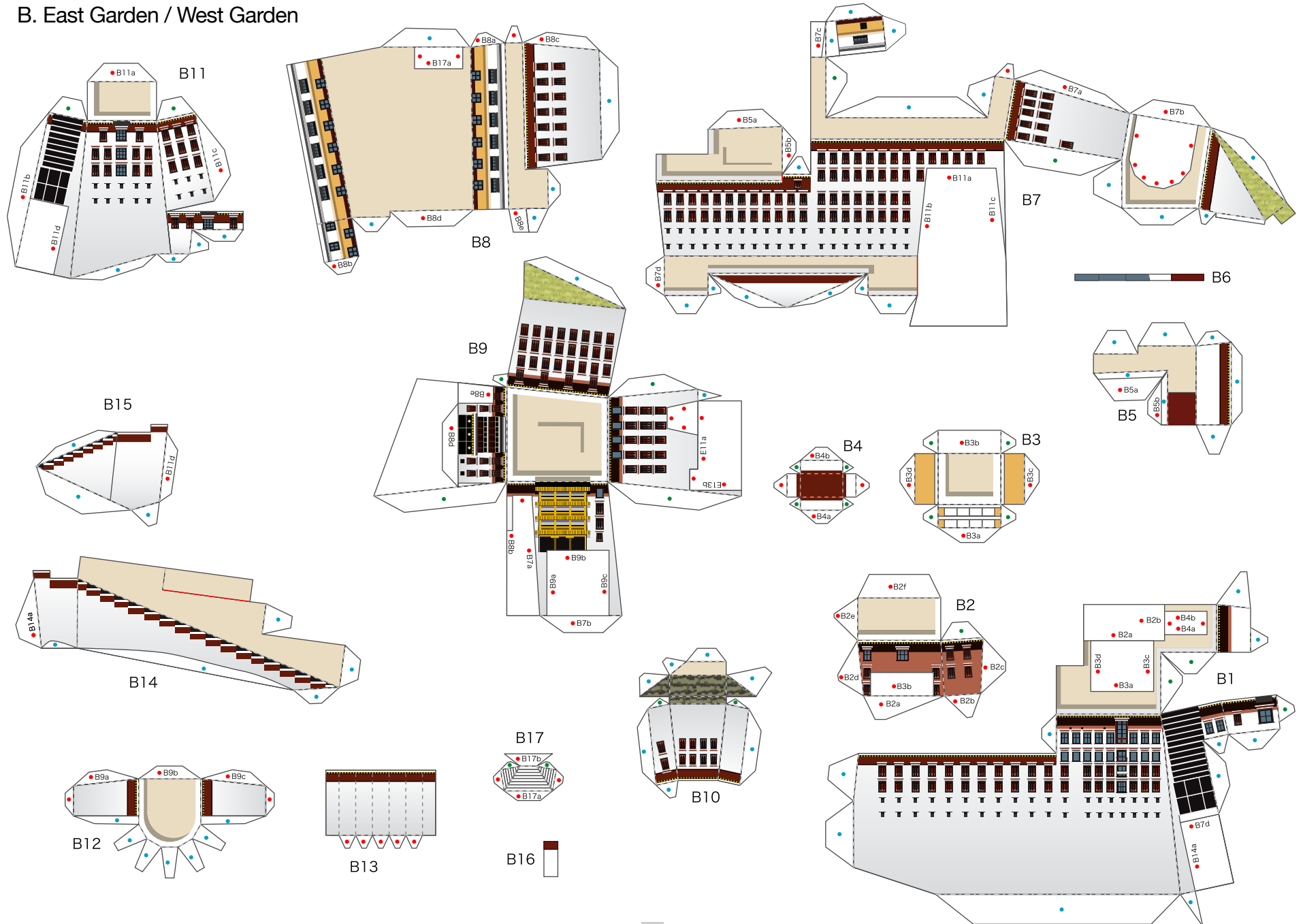


# Potala Palace, China : Pattern

© Canon Inc. © T. Ichiyama



## B. East Garden / West Garden

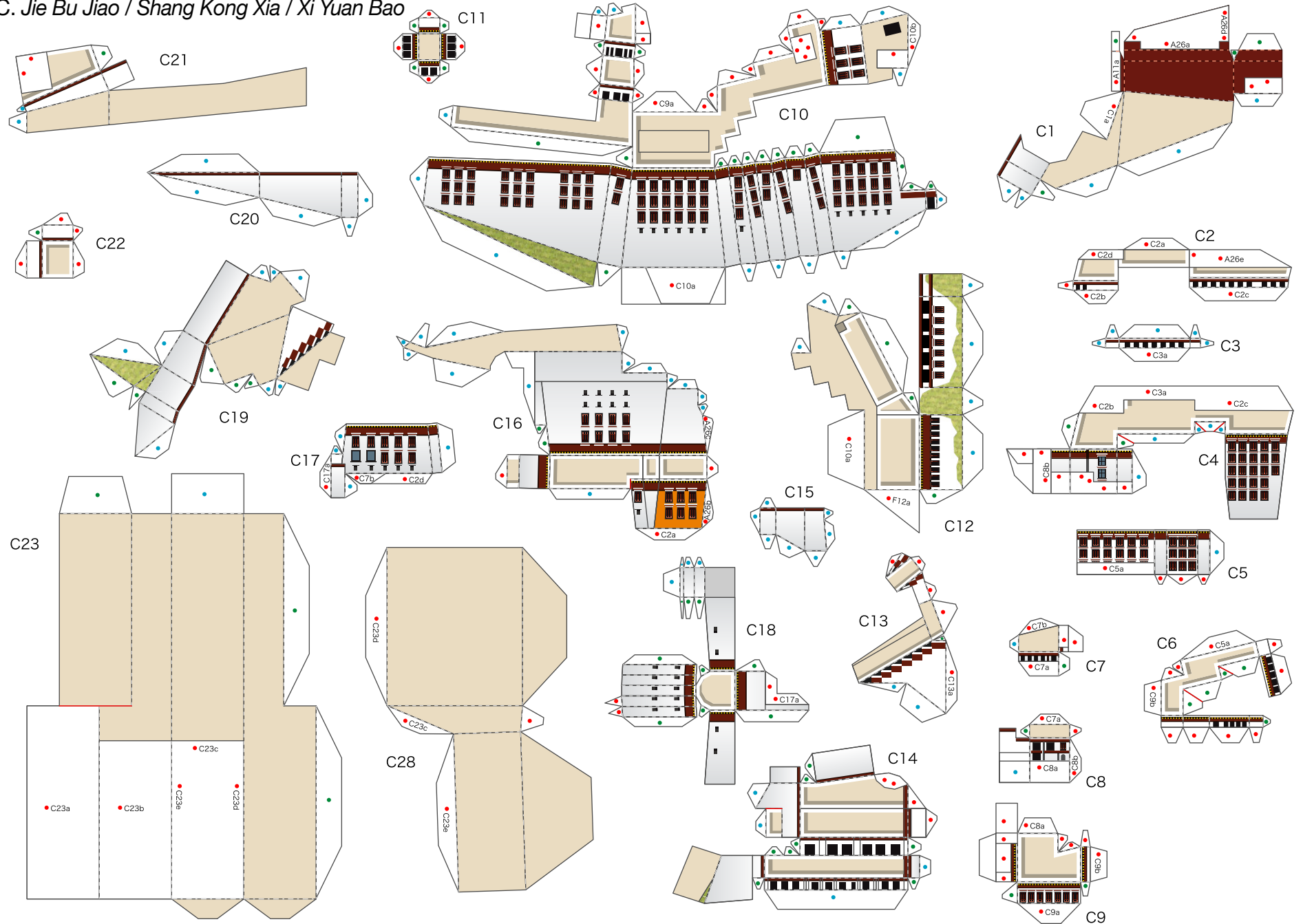


# Potala Palace, China : Pattern

© Canon Inc. © T.Ichiyama

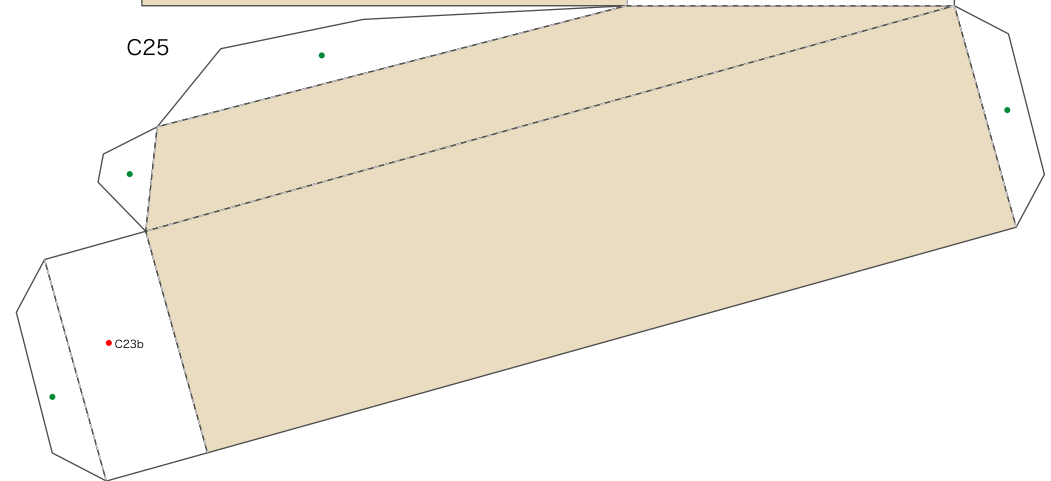
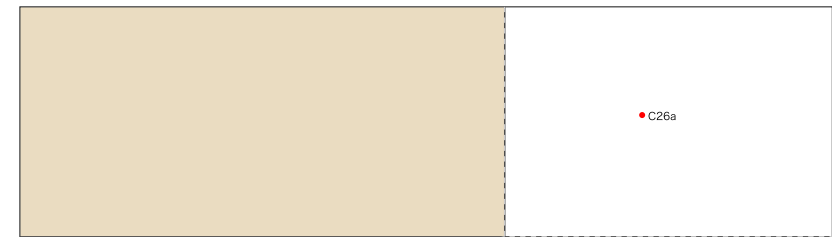
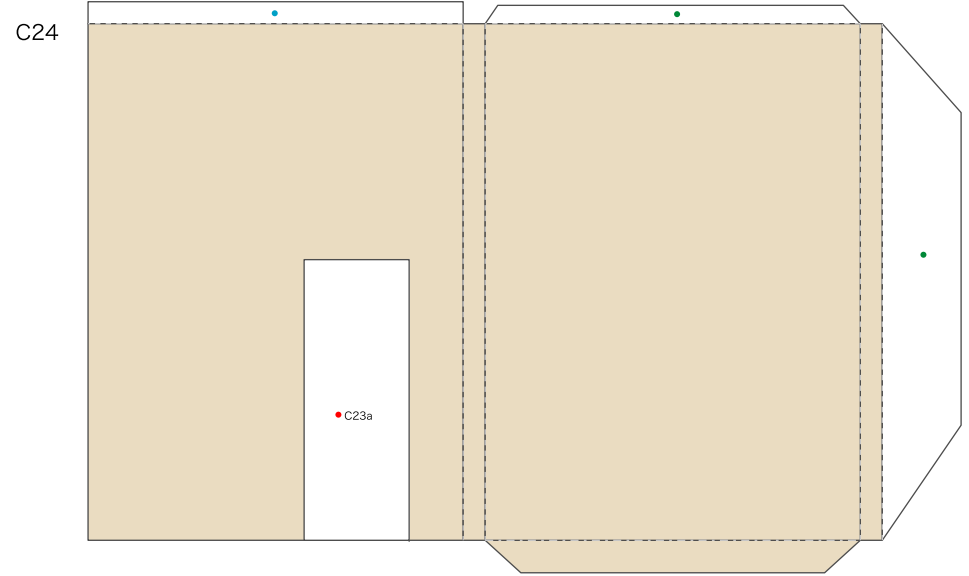
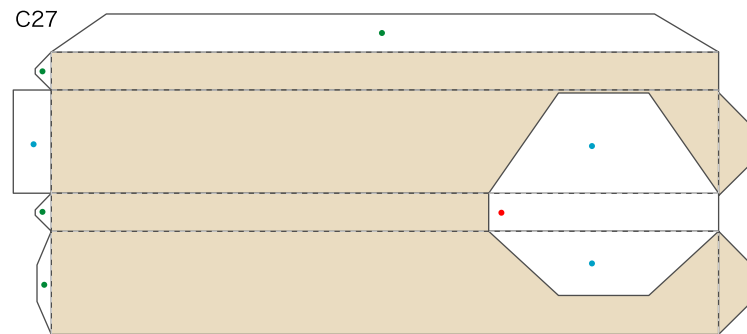
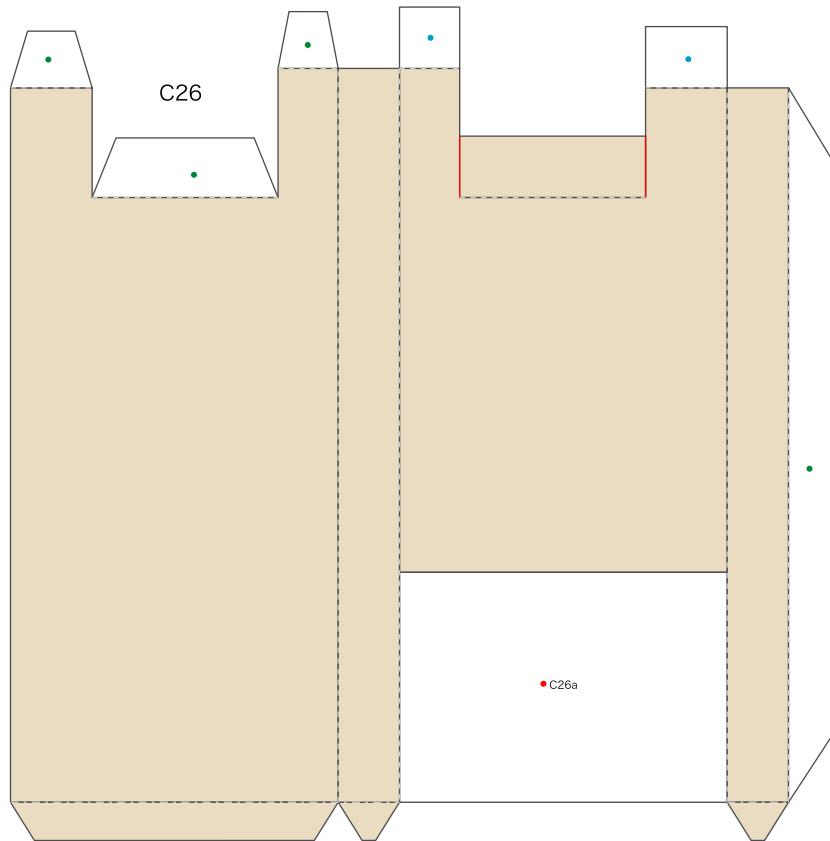


C. Jie Bu Jiao / Shang Kong Xia / Xi Yuan Bao



# Potala Palace, China : Pattern

C. Jie Bu Jiao / Shang Kong Xia / Xi Yuan Bao

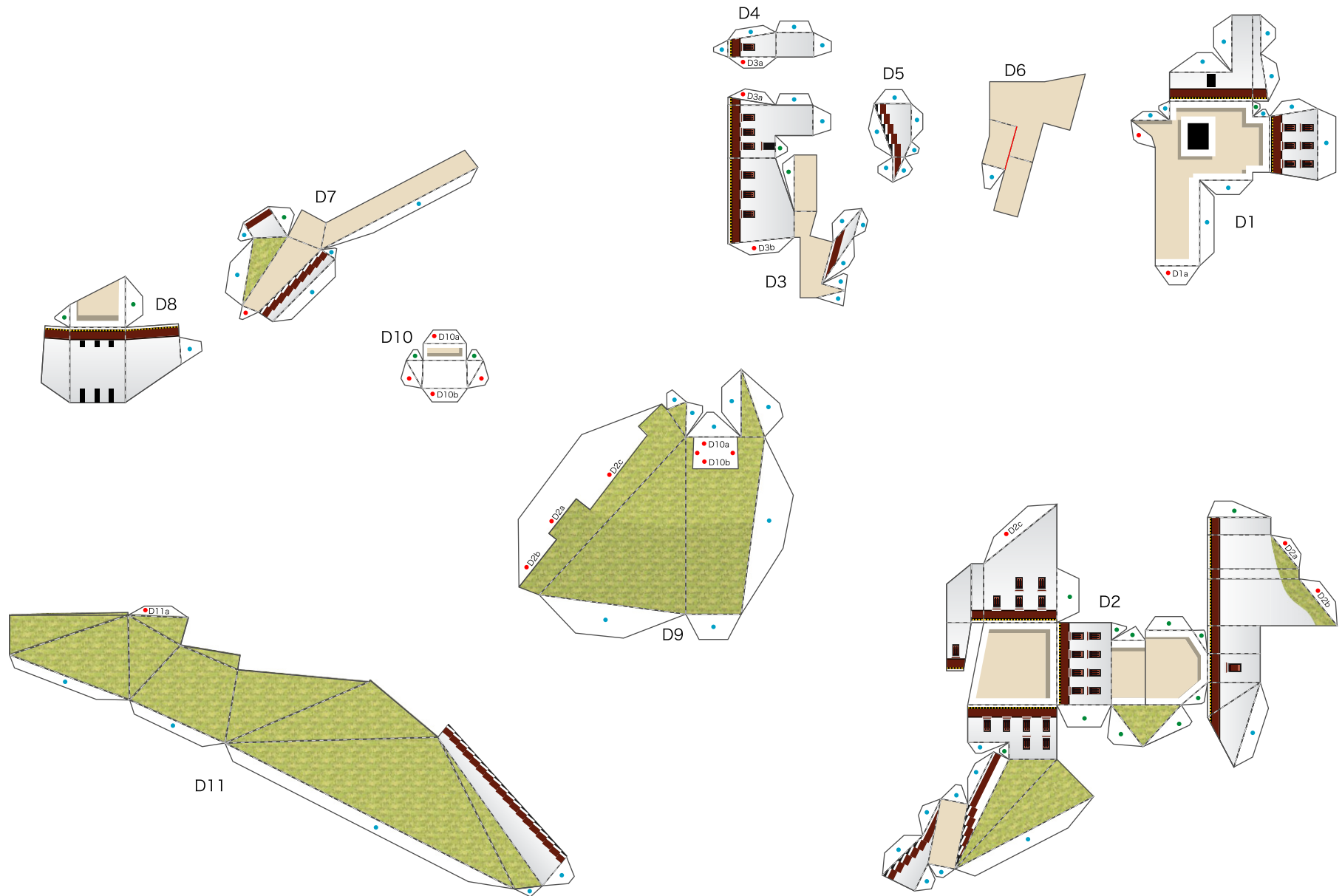


# Potala Palace, China : Pattern

© Canon Inc. © T.Ichihama



## D. Northern side of Marpo Ri

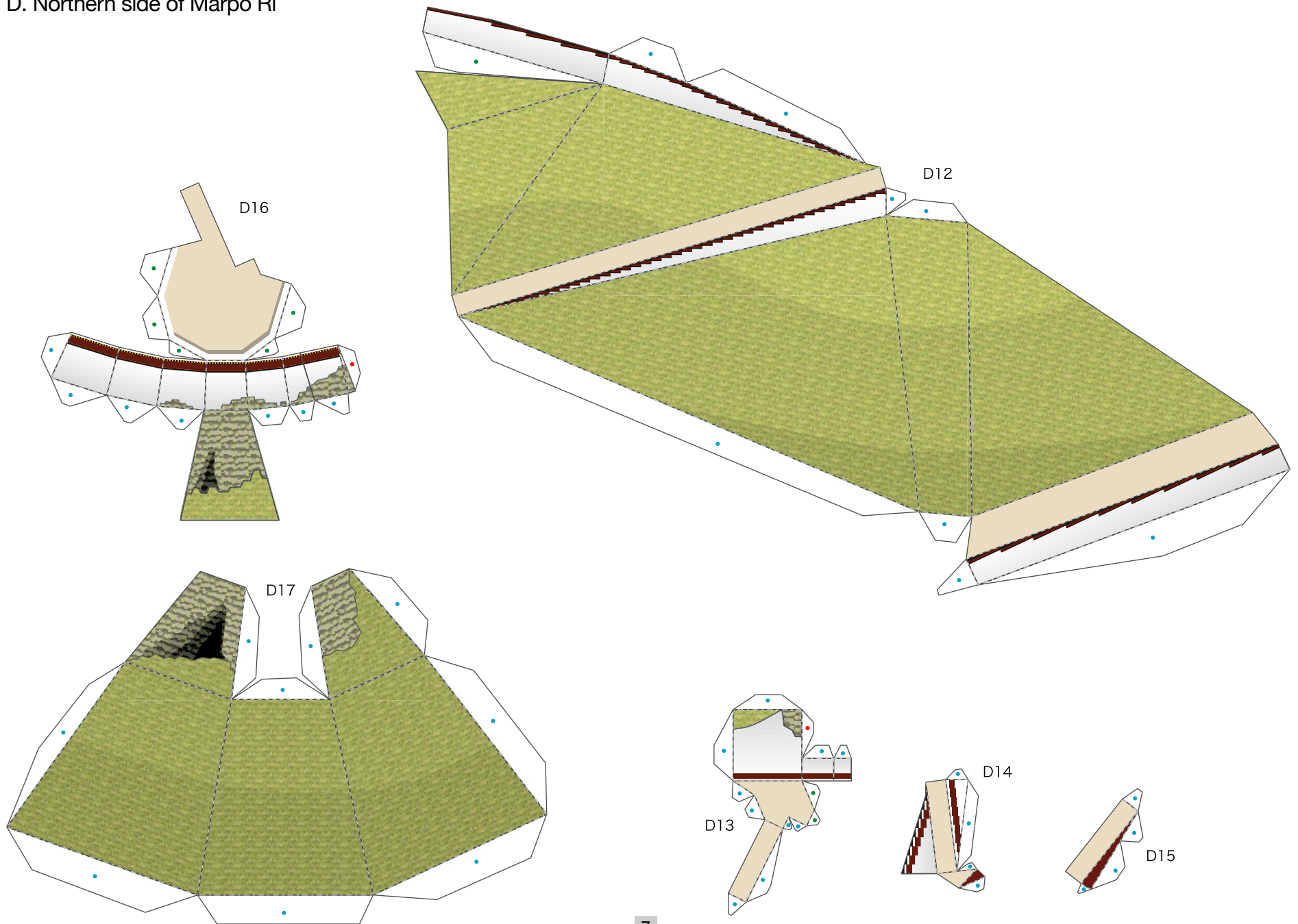


# Potala Palace, China : Pattern

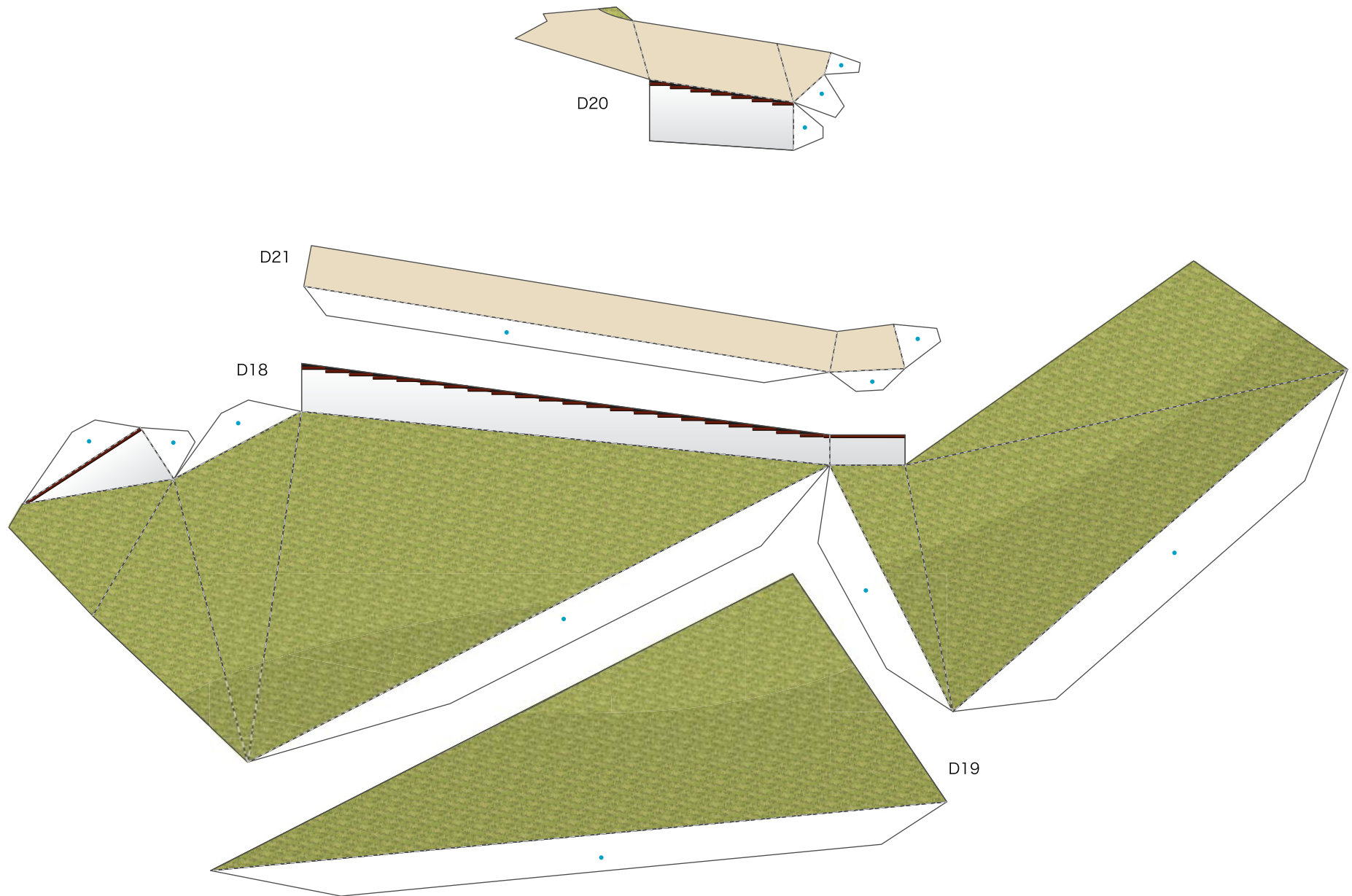
© Canon Inc. © T.Ichiyama



D. Northern side of Marpo Ri



## D. Northern side of Marpo Ri



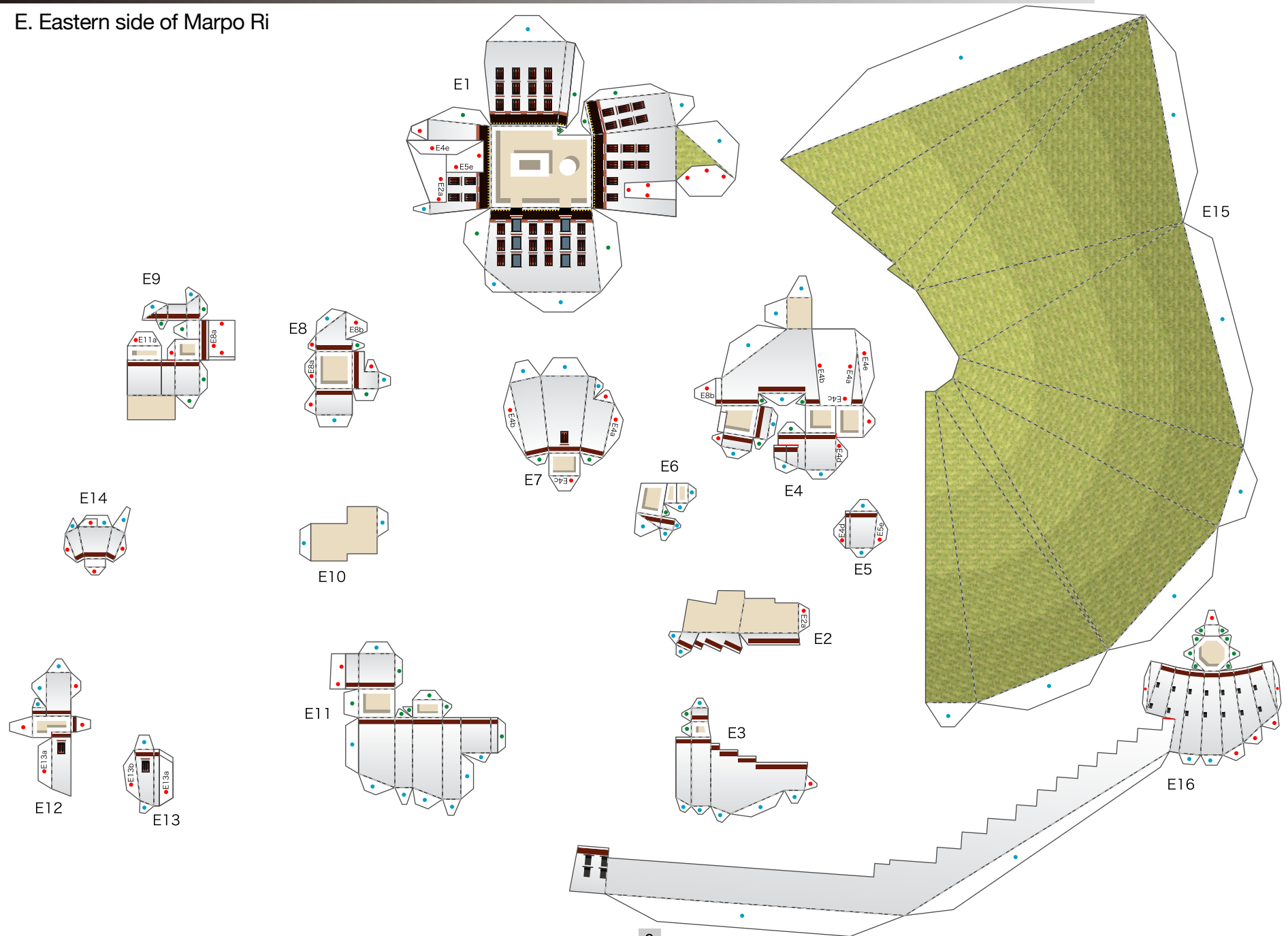


# Potala Palace, China : Pattern

© Canon Inc. © T.Ichiyama



## E. Eastern side of Marpo Ri



# Potala Palace, China : Pattern

© Canon Inc. © T.Ichihama



E. Eastern side of Marpo Ri

