

CREATIVE PARK

<http://www.canon.com/c-park/en/>



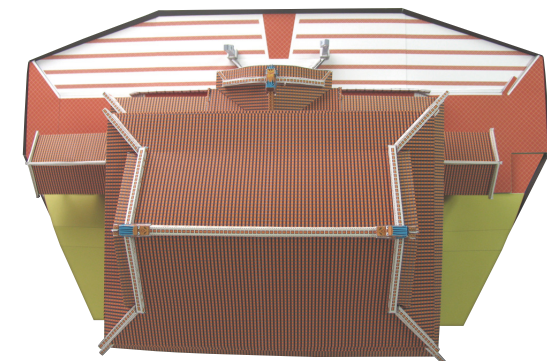
Front



Side



Overhead view



View of completed model

Shuri Castle (Japan)

This castle, estimated to have been constructed during a period extending from the fourteenth through the late seventeenth century, was home to King Sho Hashi of the Ryukyu Islands.

This is a typical Ryukyu-style structure, filled with symbols of Ryukyu culture such as a main hall with Chinese-style red-tile roofs and smooth, curving castle walls built of Ryukyu limestone.

After being destroyed several times by fire and rebuilt each time, most of the castle was completely destroyed in the Second World War. The Shureimon gate was restored in 1958, followed by restoration of most of the rest of the castle in 1992.

In 2000, Shuri Castle was named a UNESCO World Heritage Site, and designated as the Gusuku Sites and Related Properties of the Kingdom of Ryukyu.

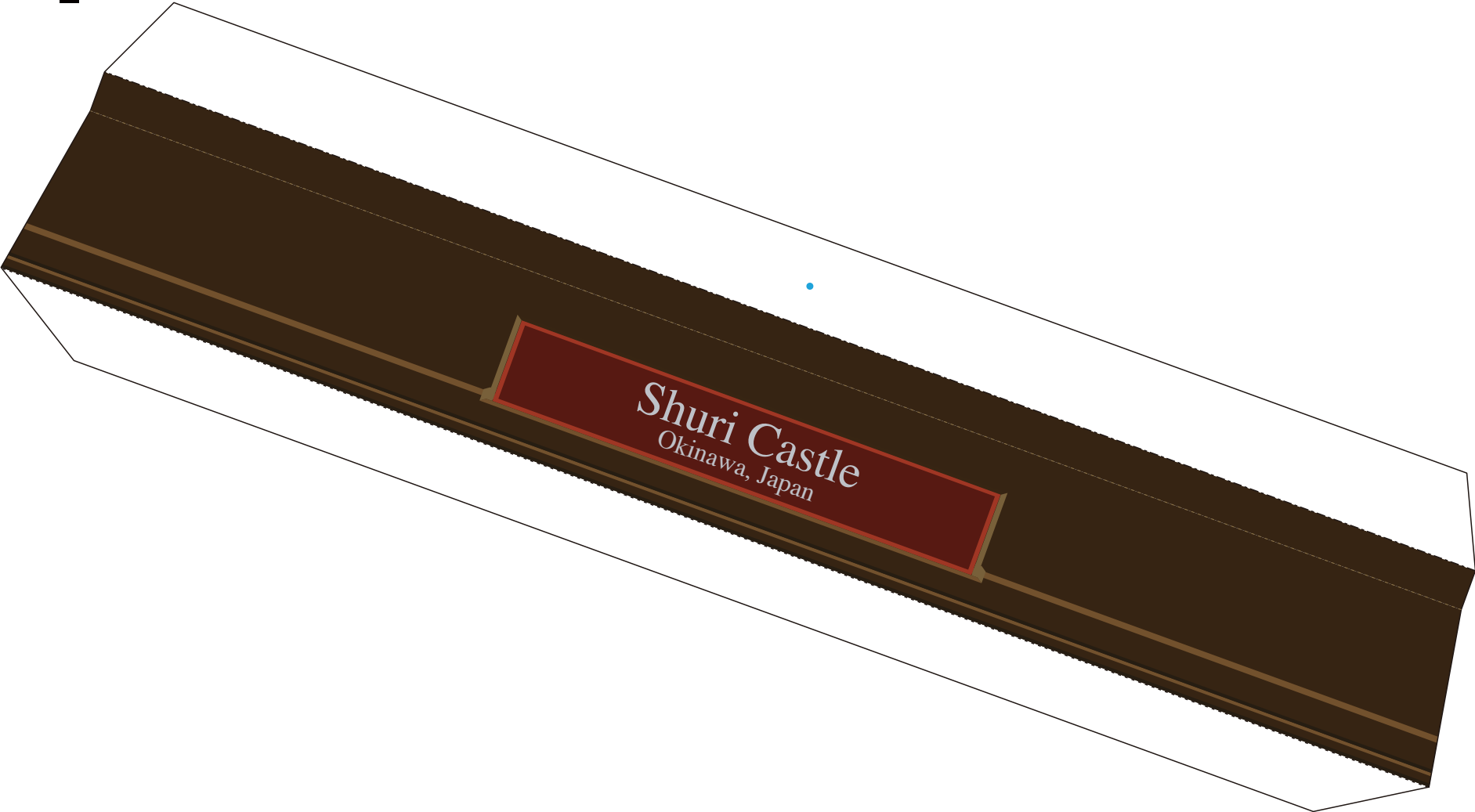
* This model was designed for Papercraft and may differ from the original in some respects.

■ Parts list (pattern) : Thirty-six A4 sheets (No. 1 to No. 36)

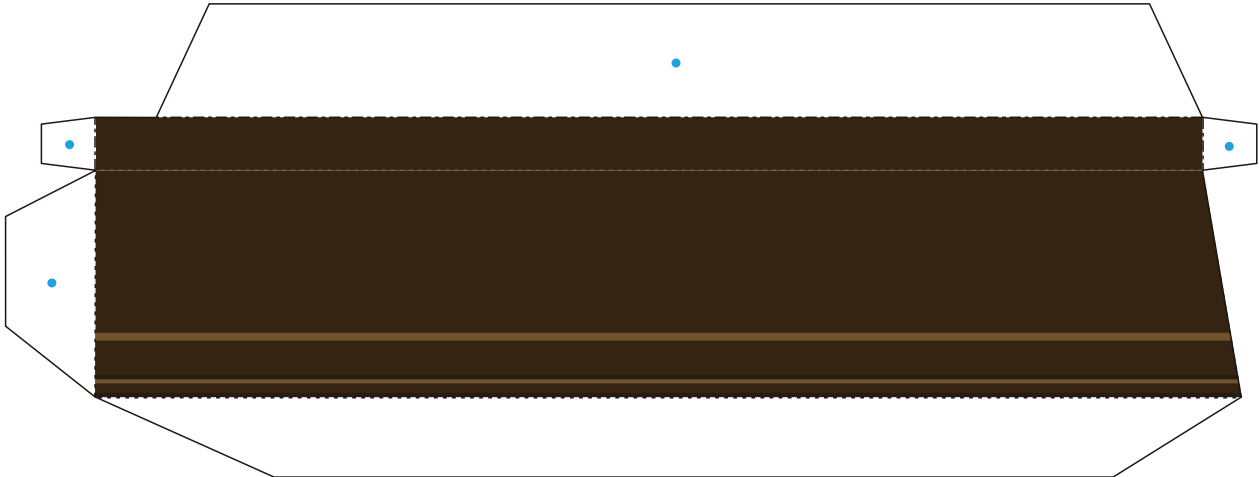
■ No. of Parts : 161

* Build the model by carefully reading the Assembly Instructions , in the parts sheet page order.

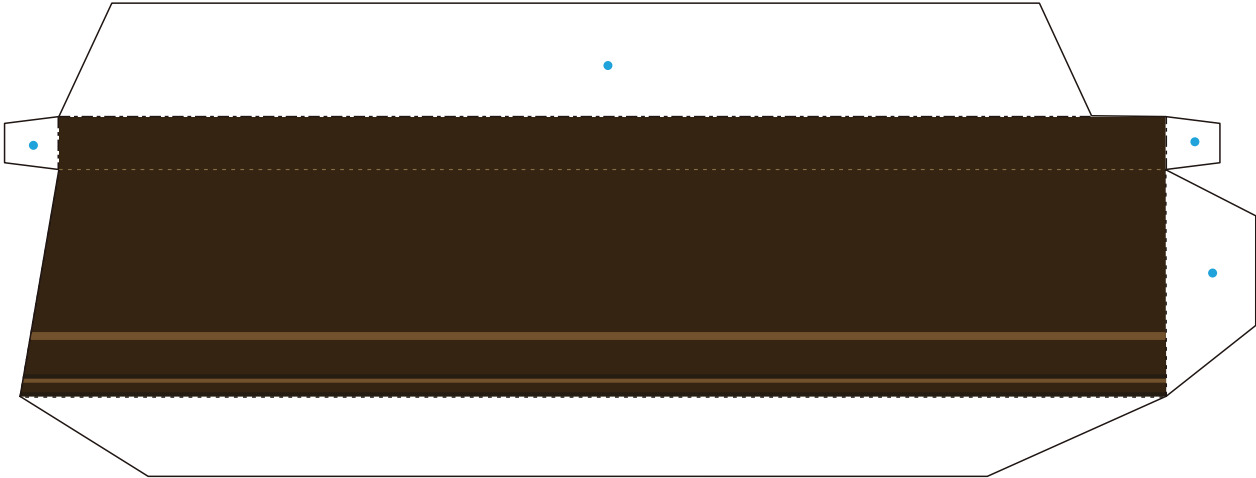
1



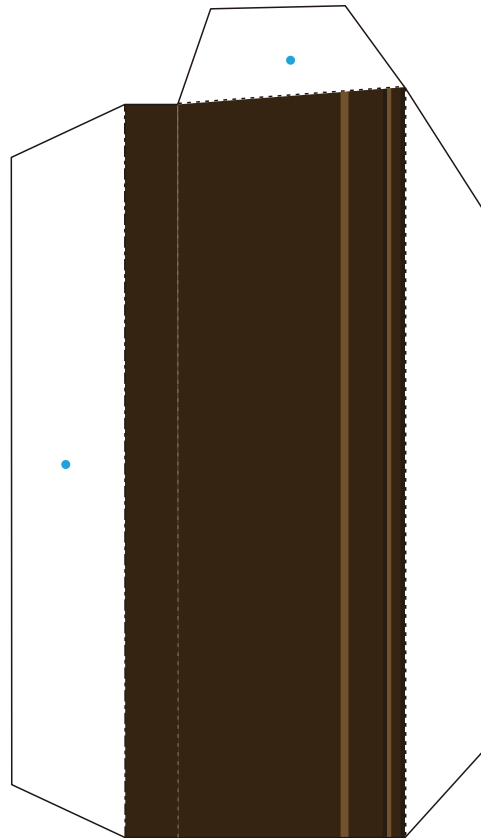
2



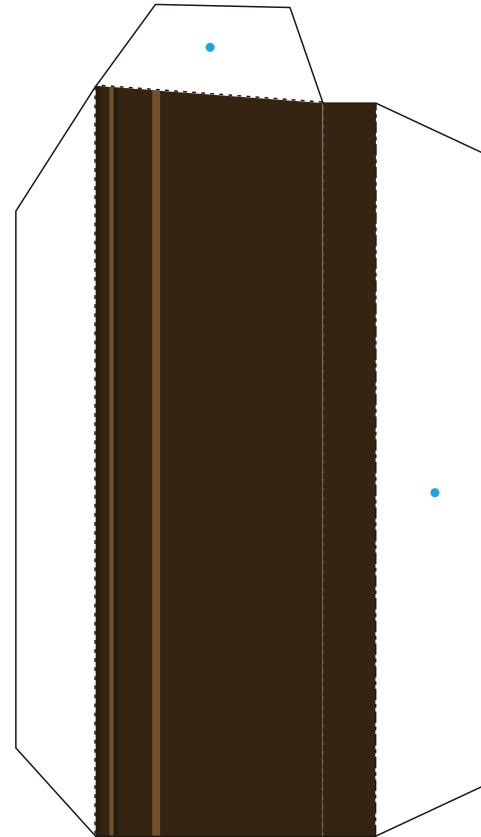
3

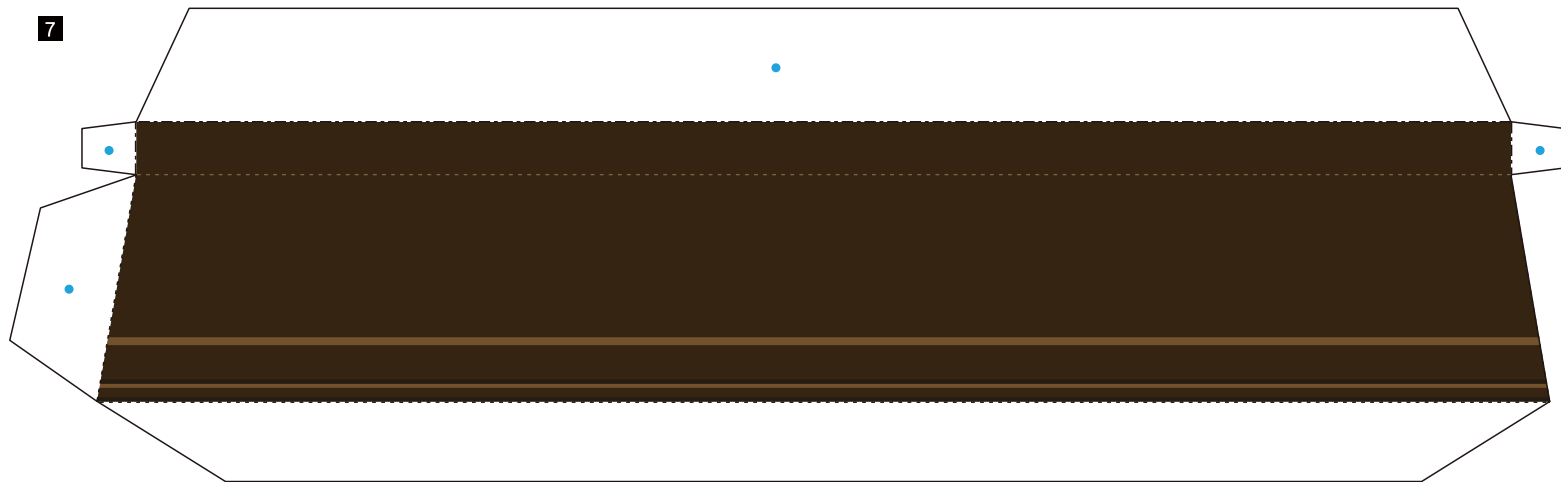
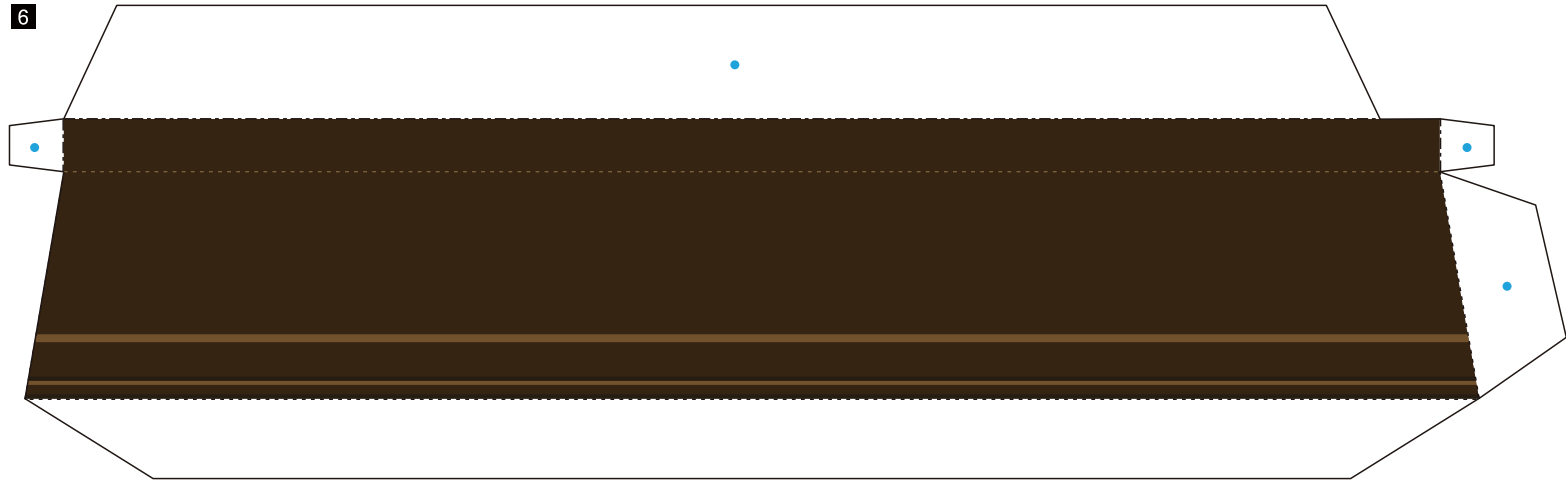


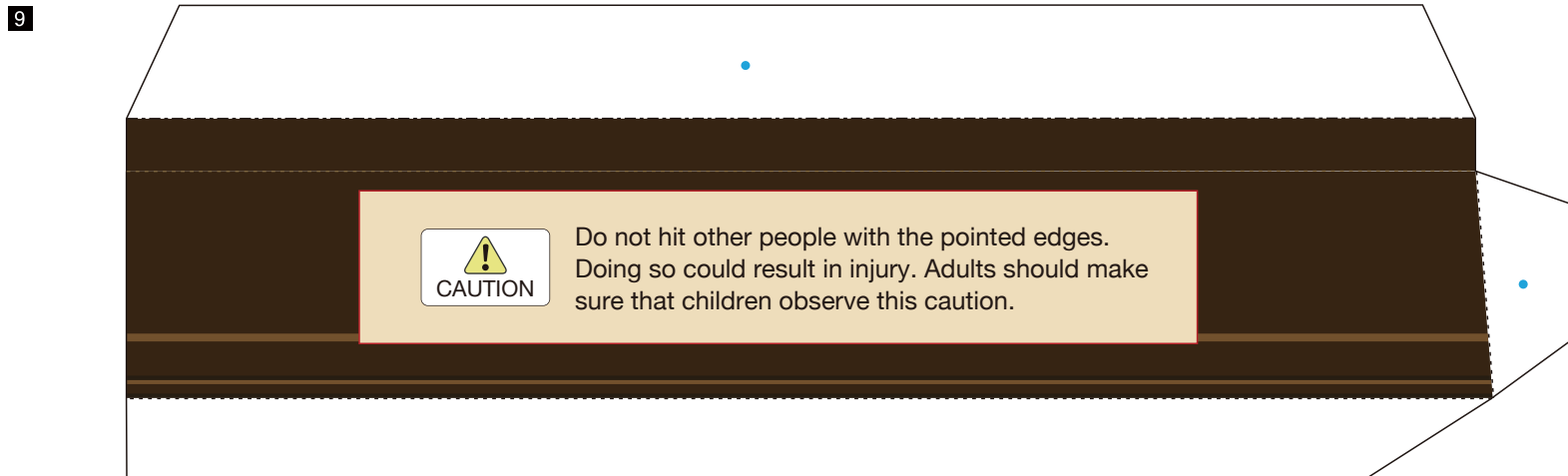
4

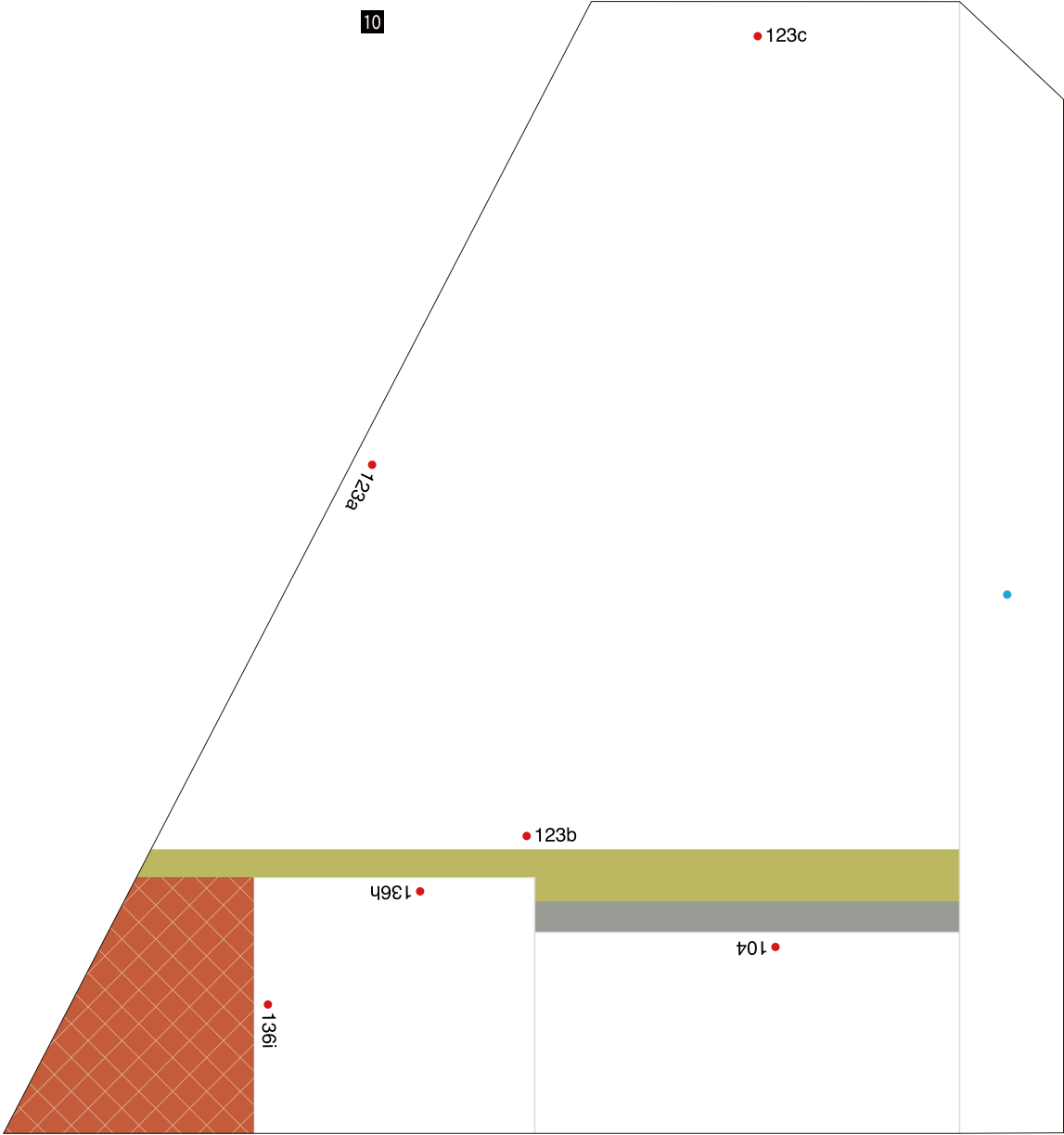


5

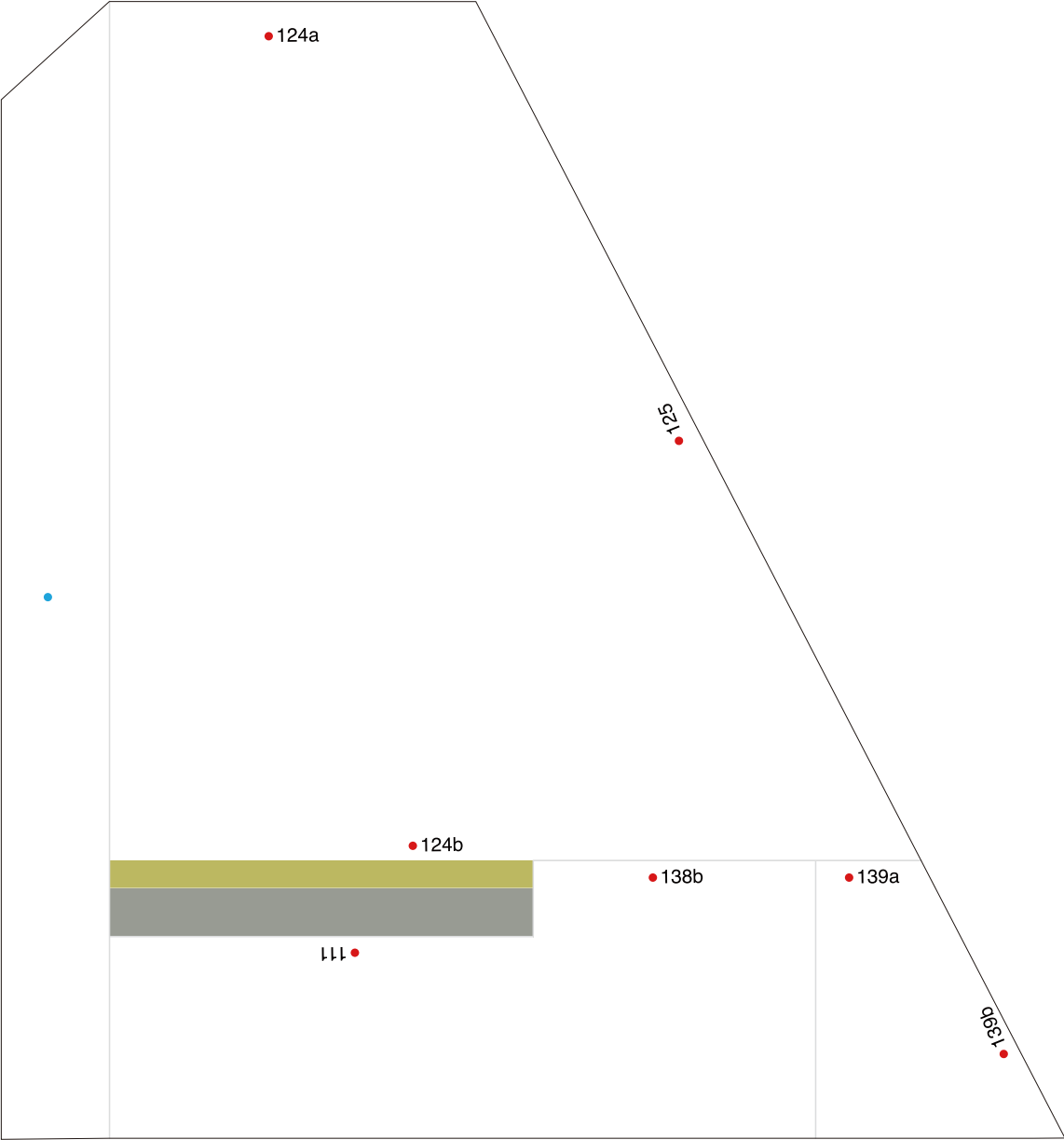




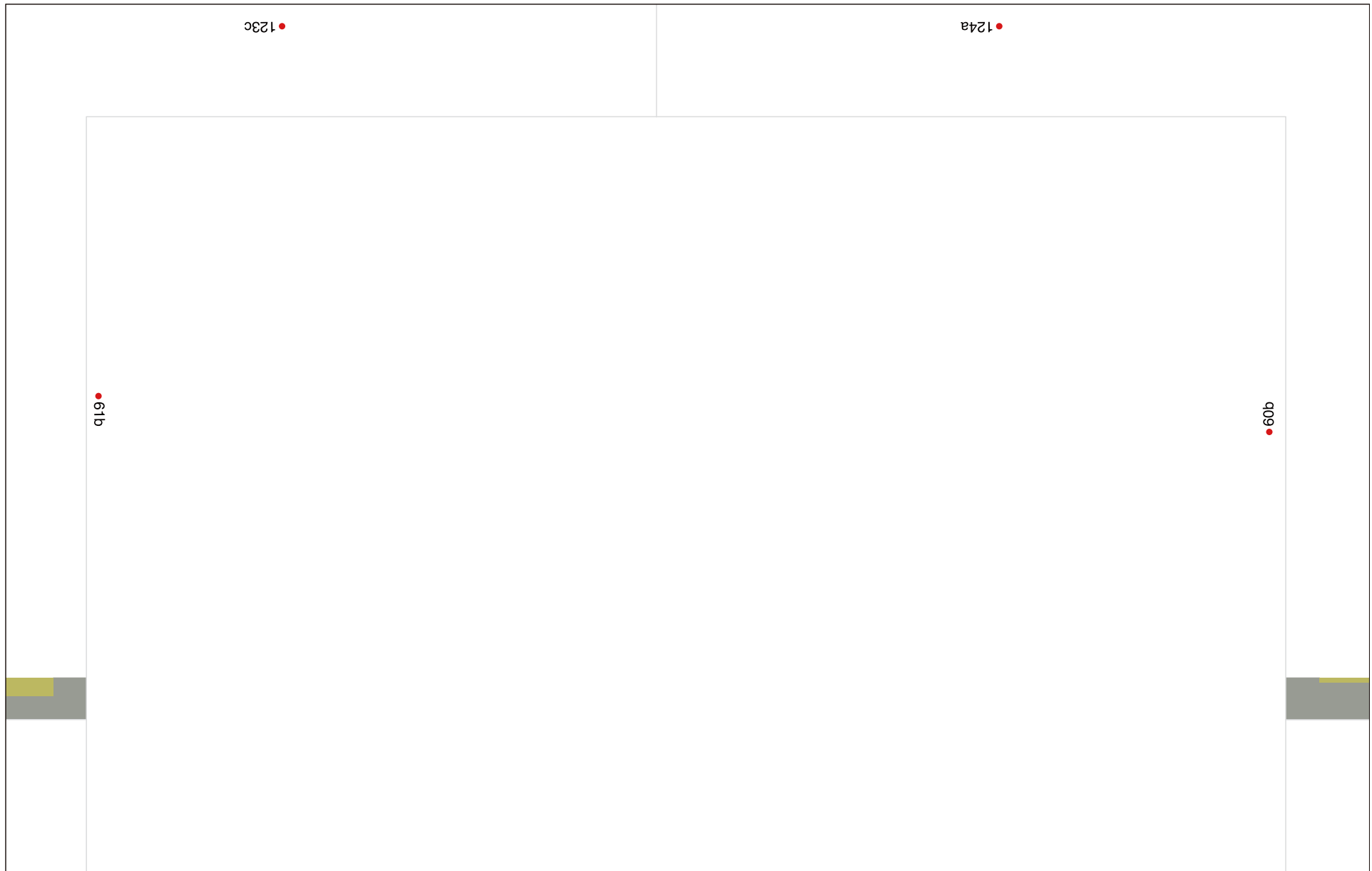




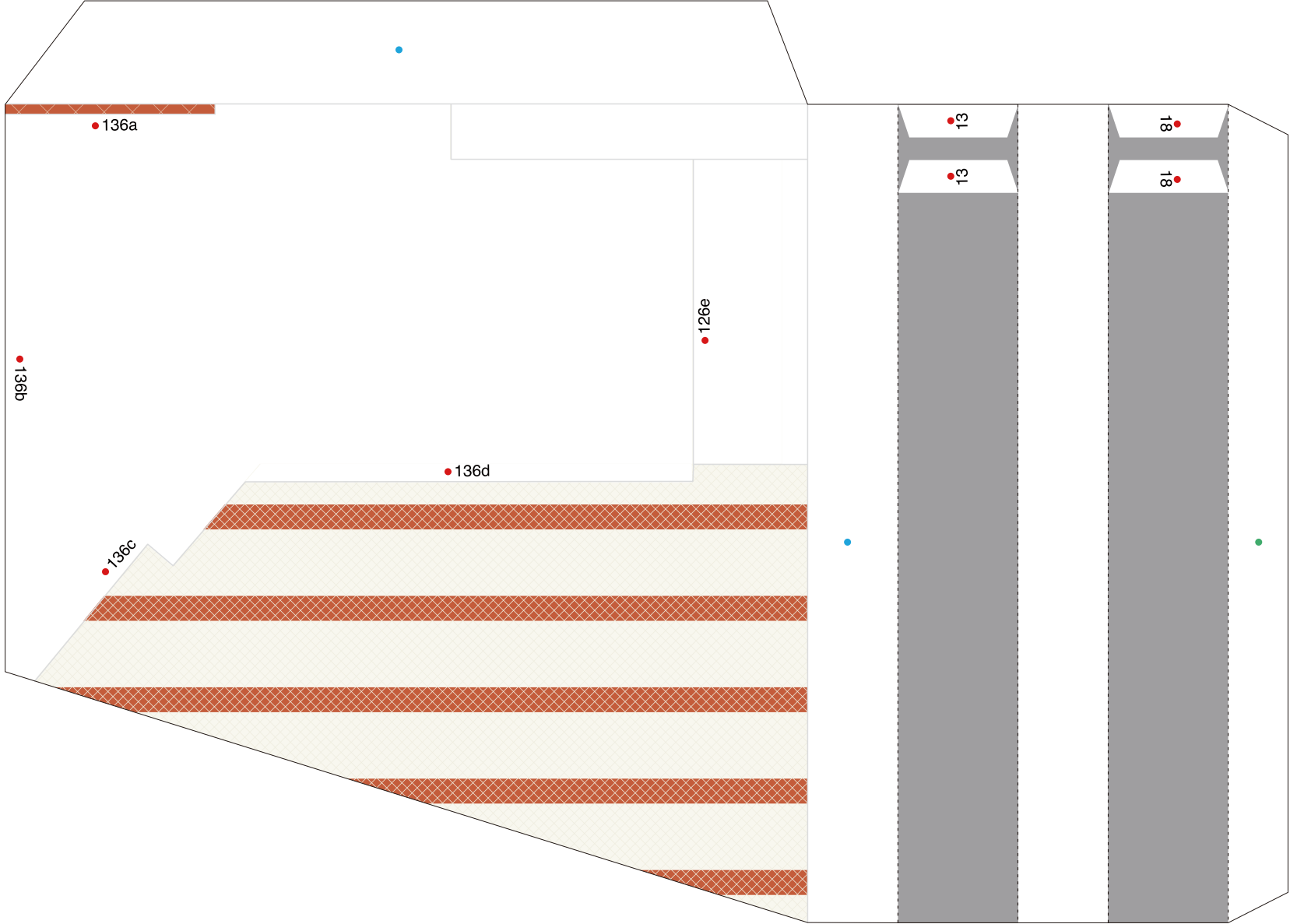
11



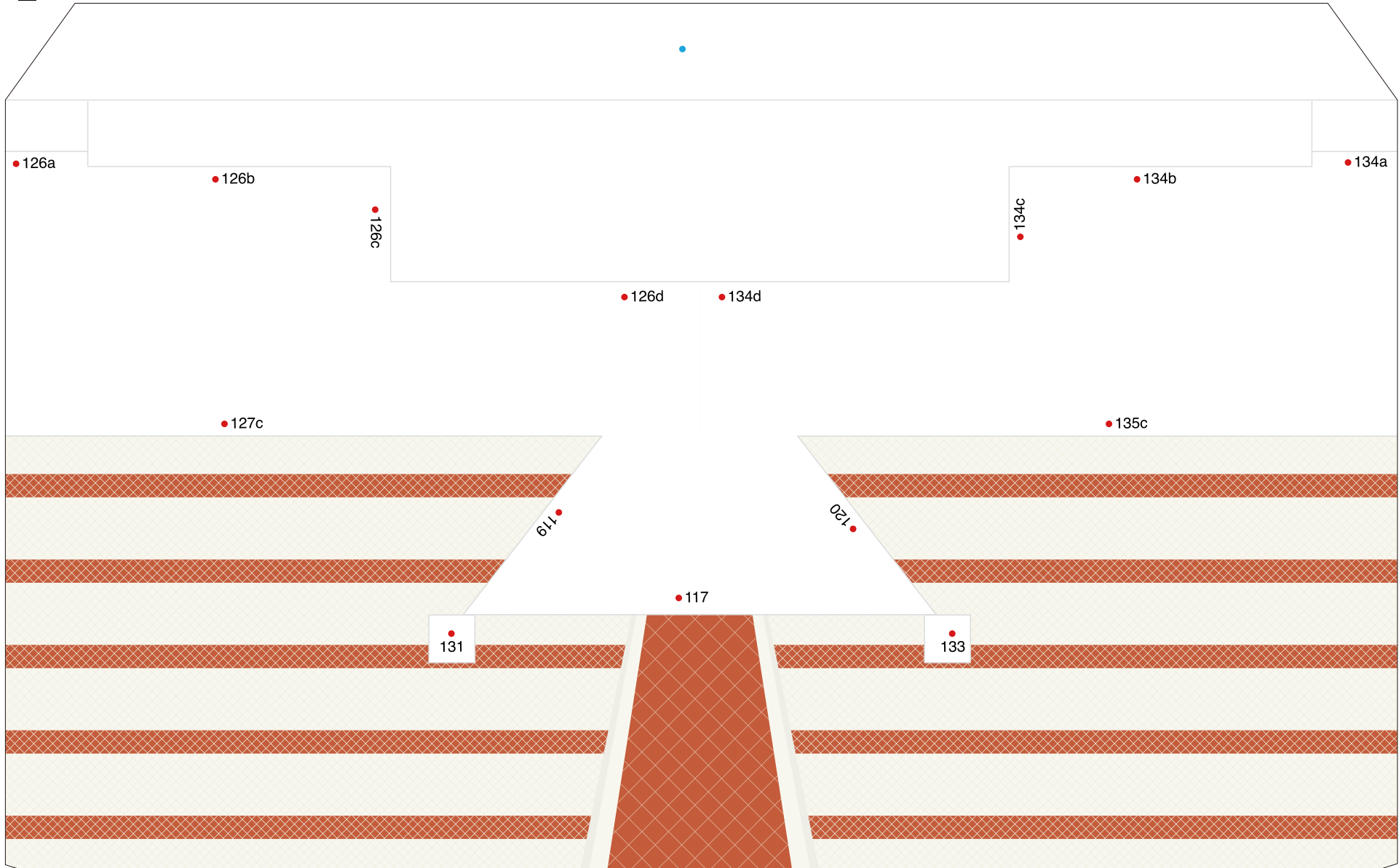
12

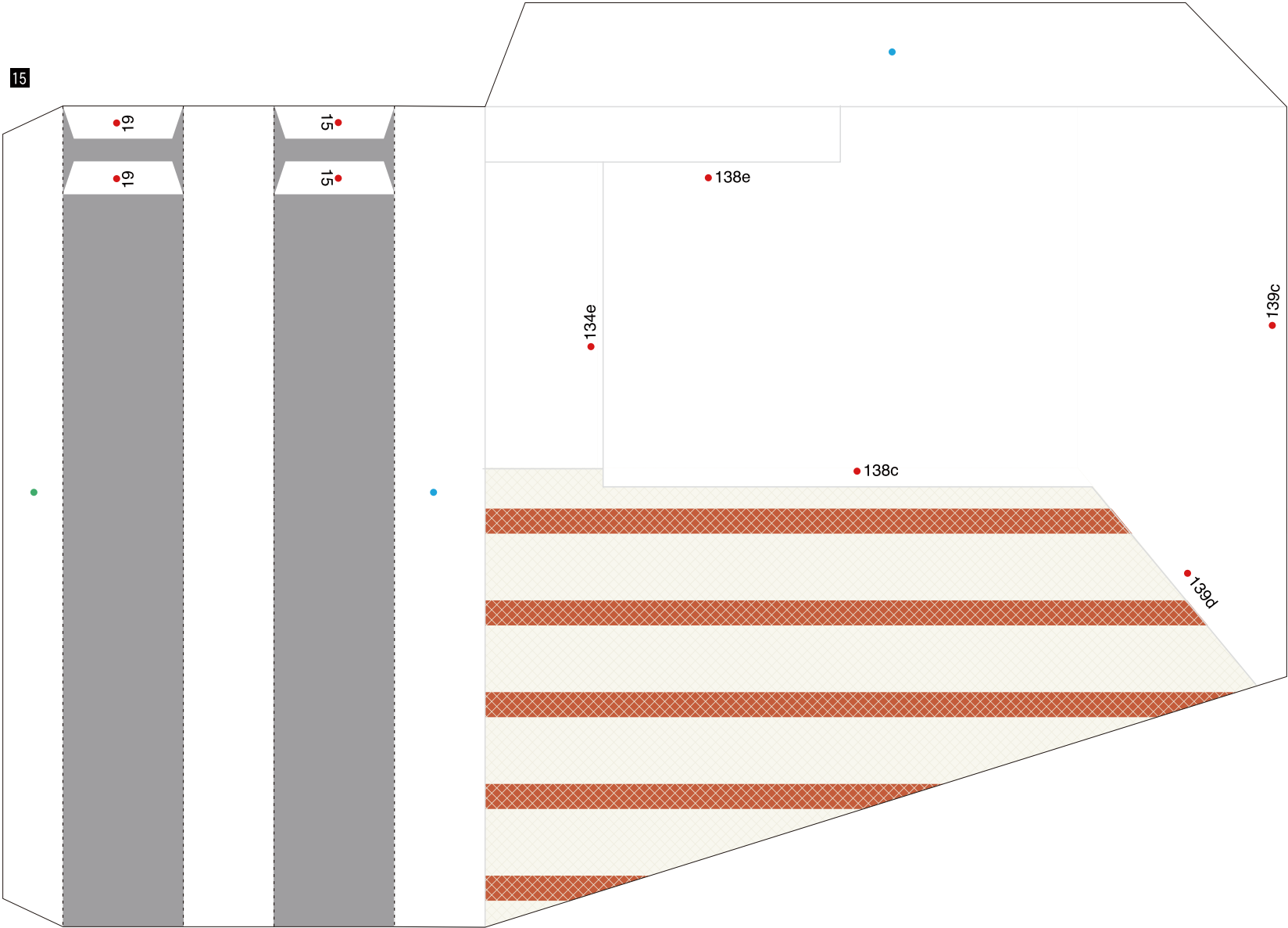


13

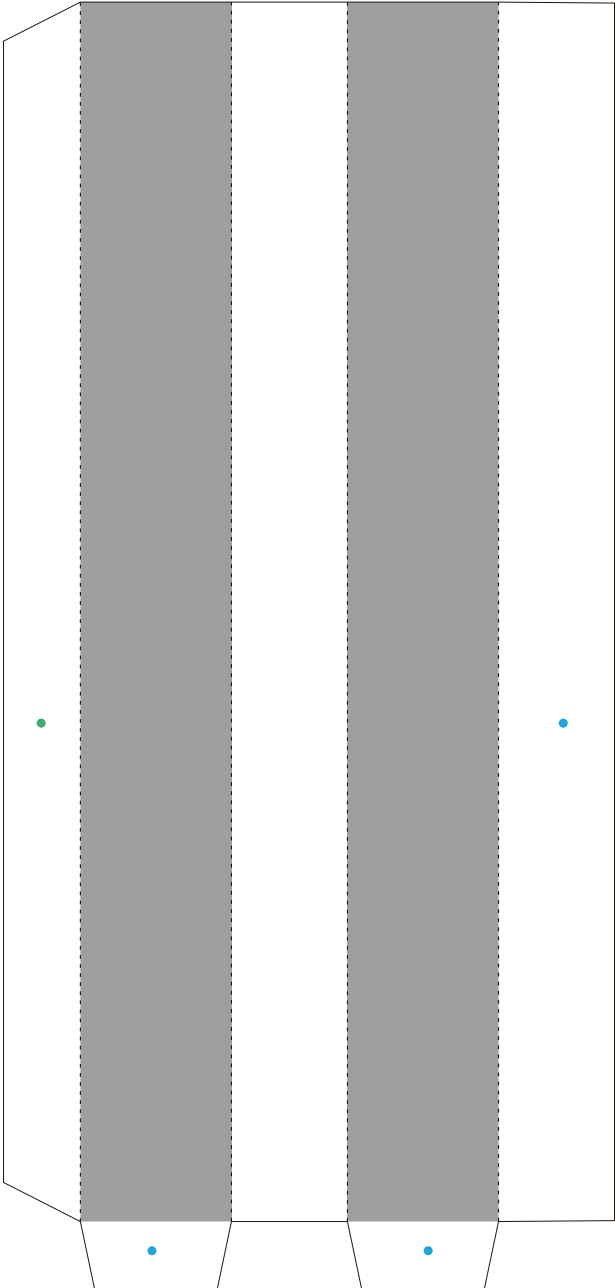


14

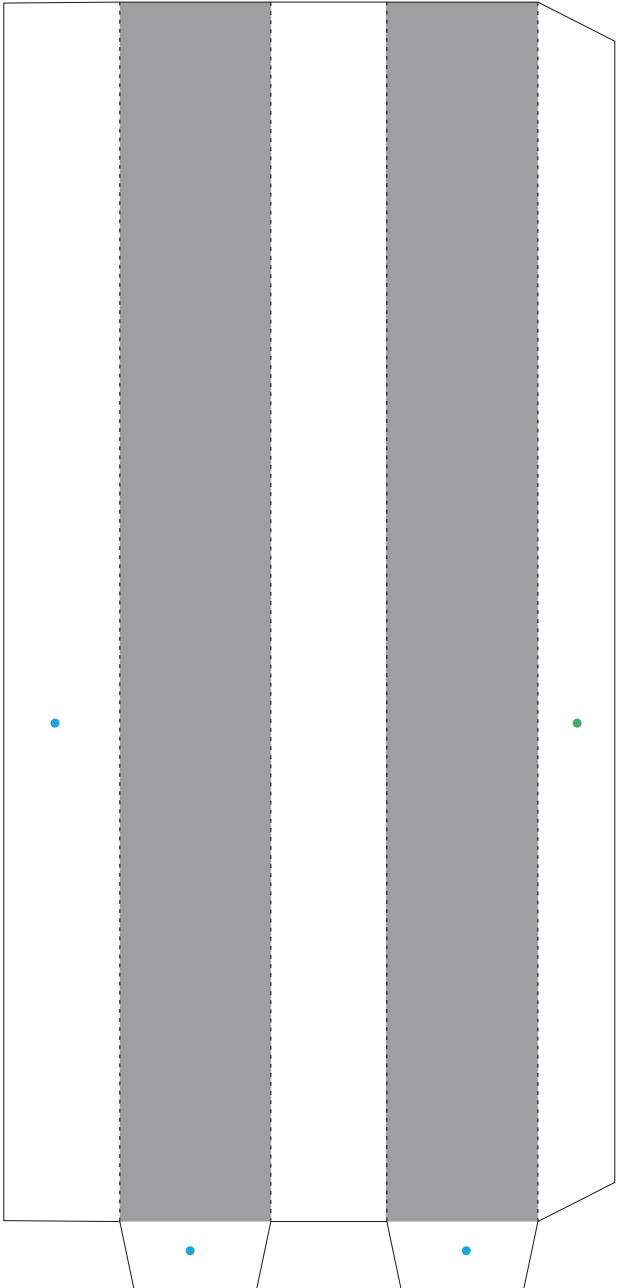




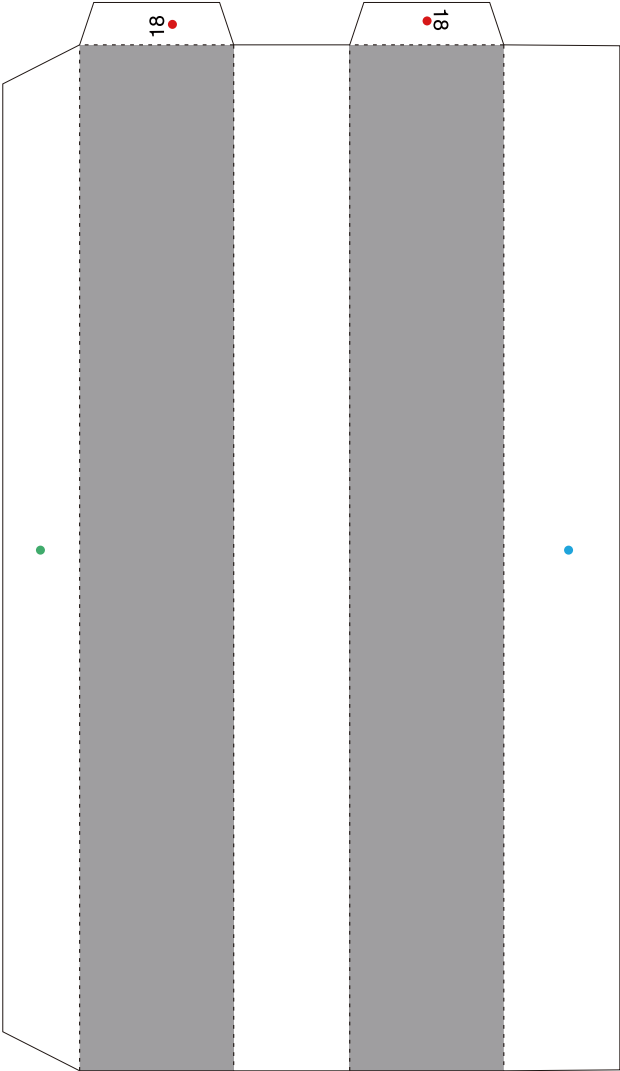
16



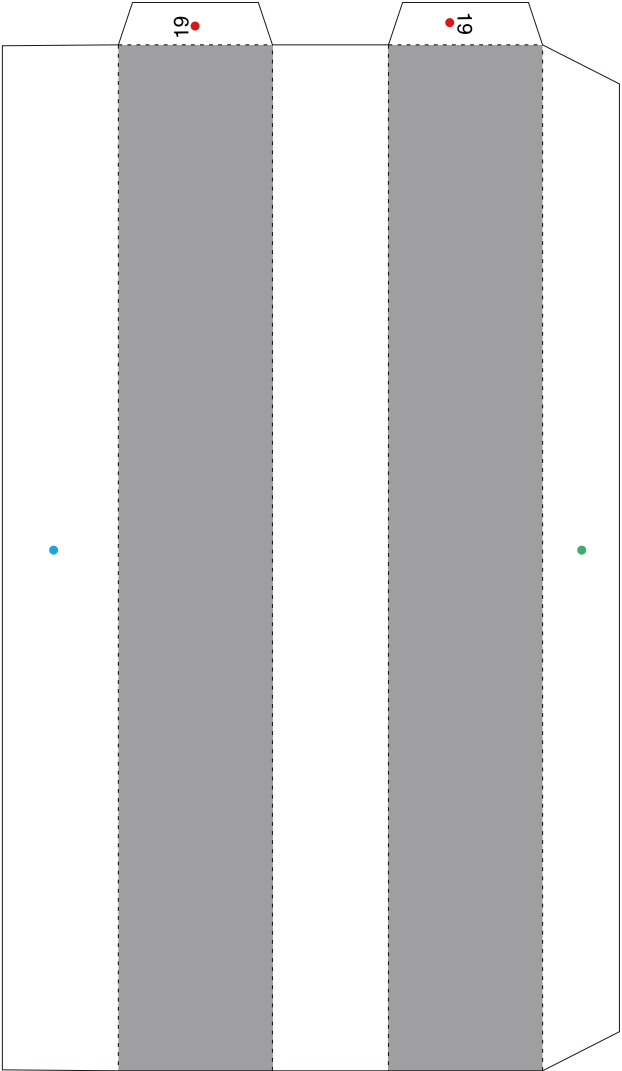
17



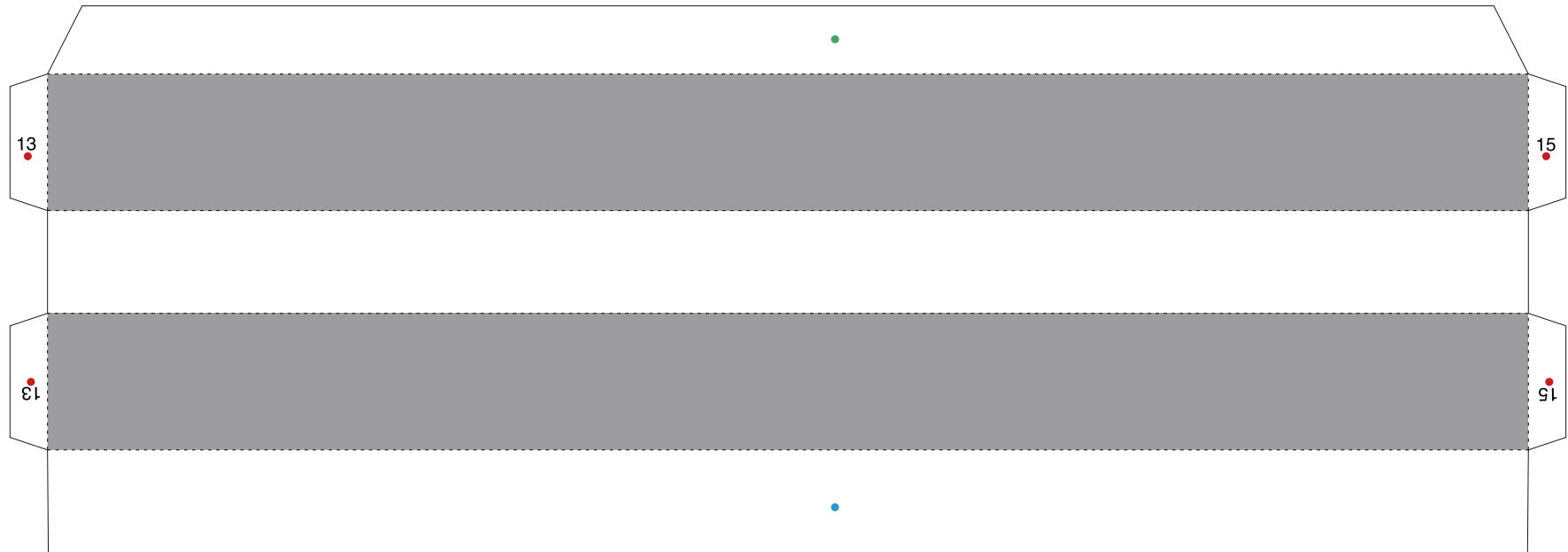
18



19

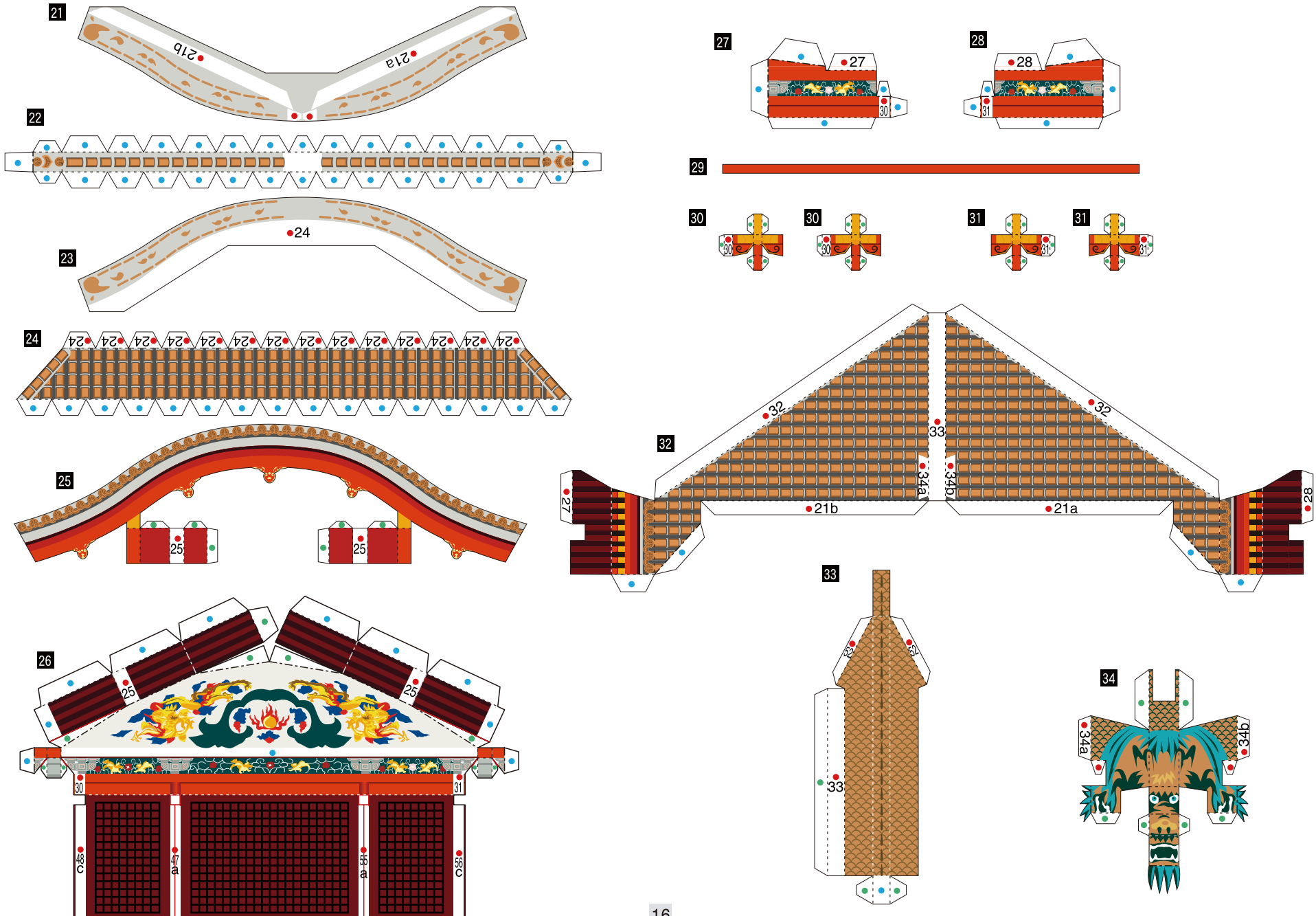


20



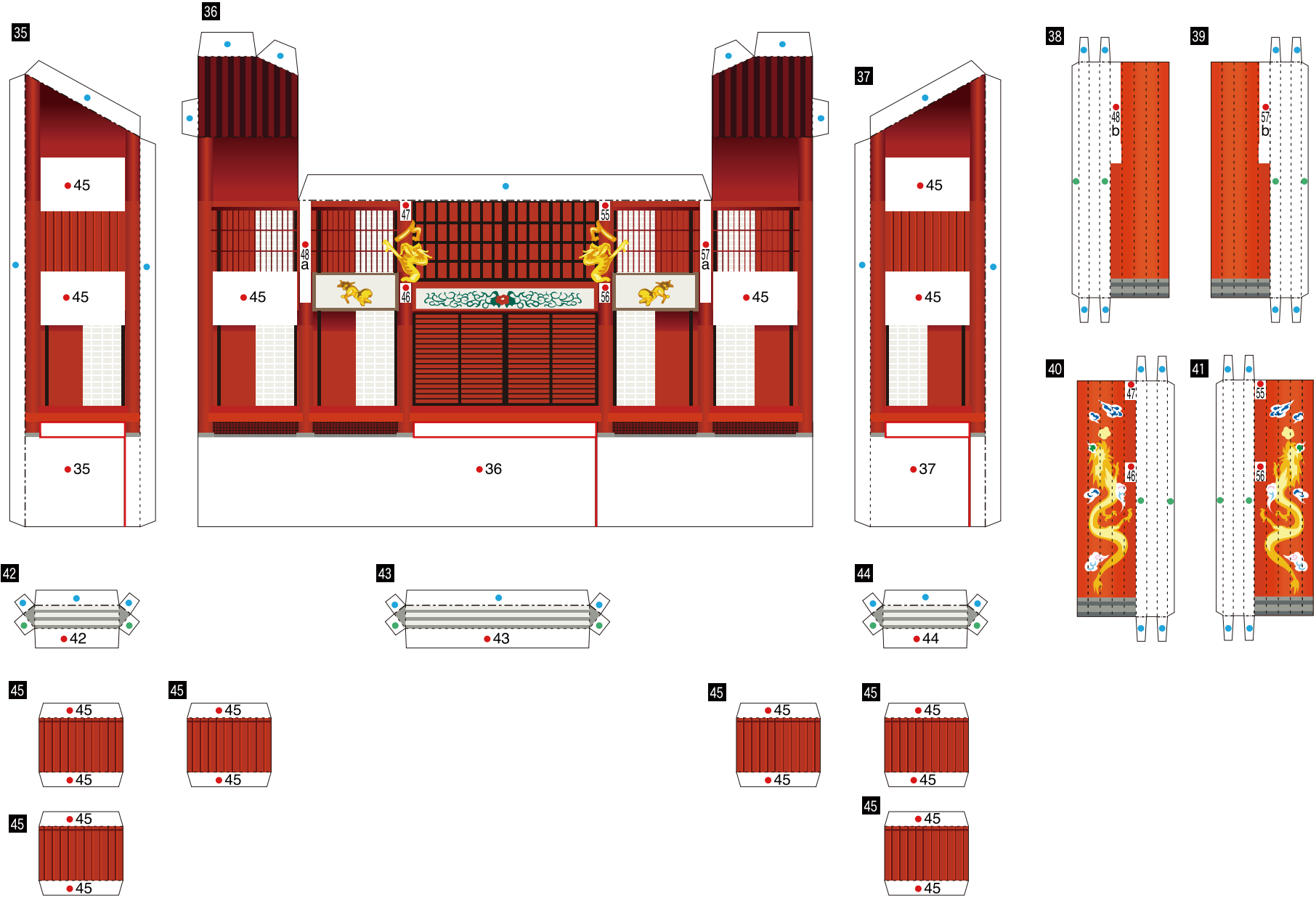
Shuri Castle (Japan) : Pattern

© Canon Inc. © A&A



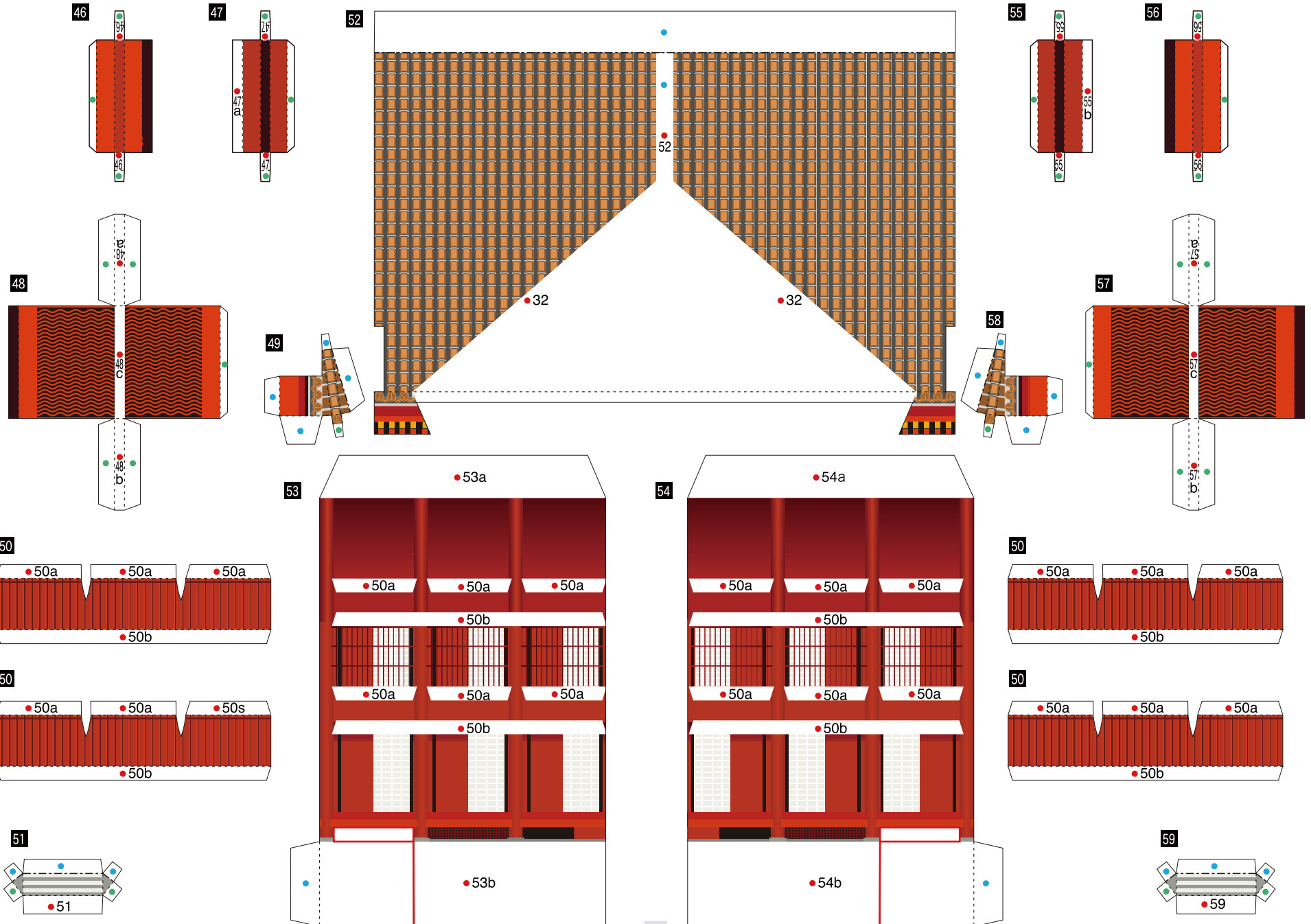
Shuri Castle (Japan) : Pattern

© Canon Inc. © A&A

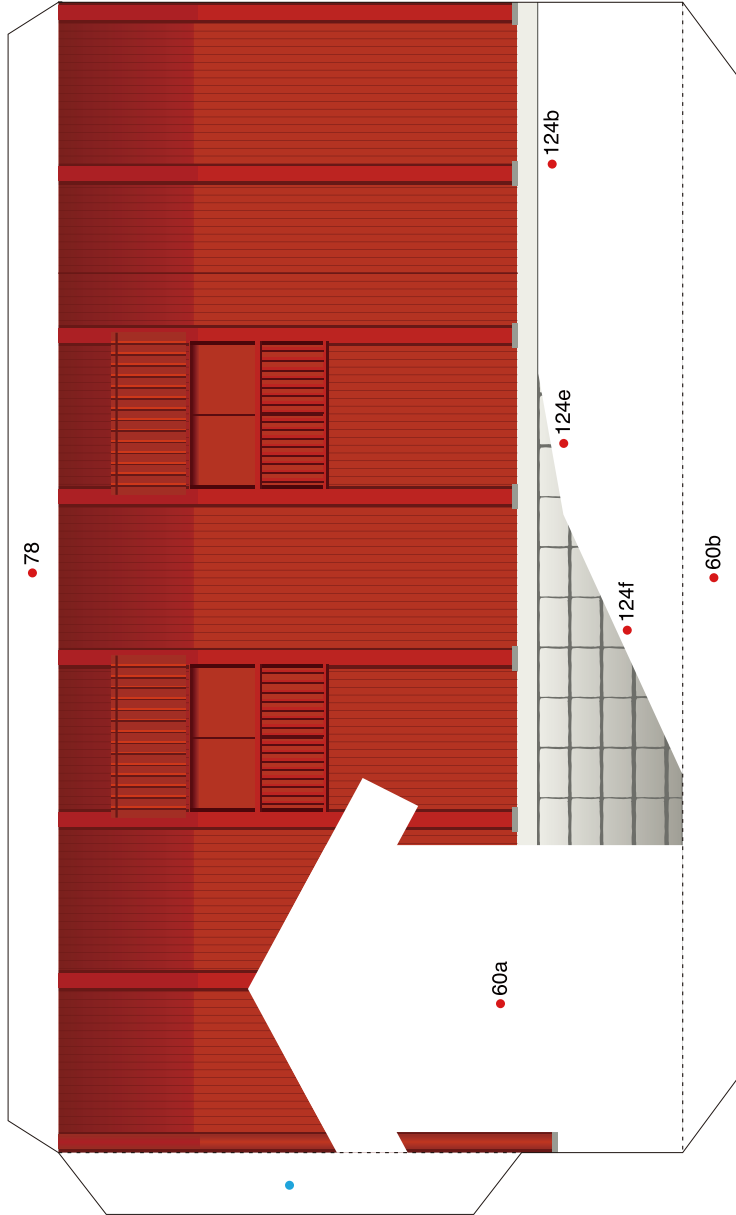


Shuri Castle (Japan) : Pattern

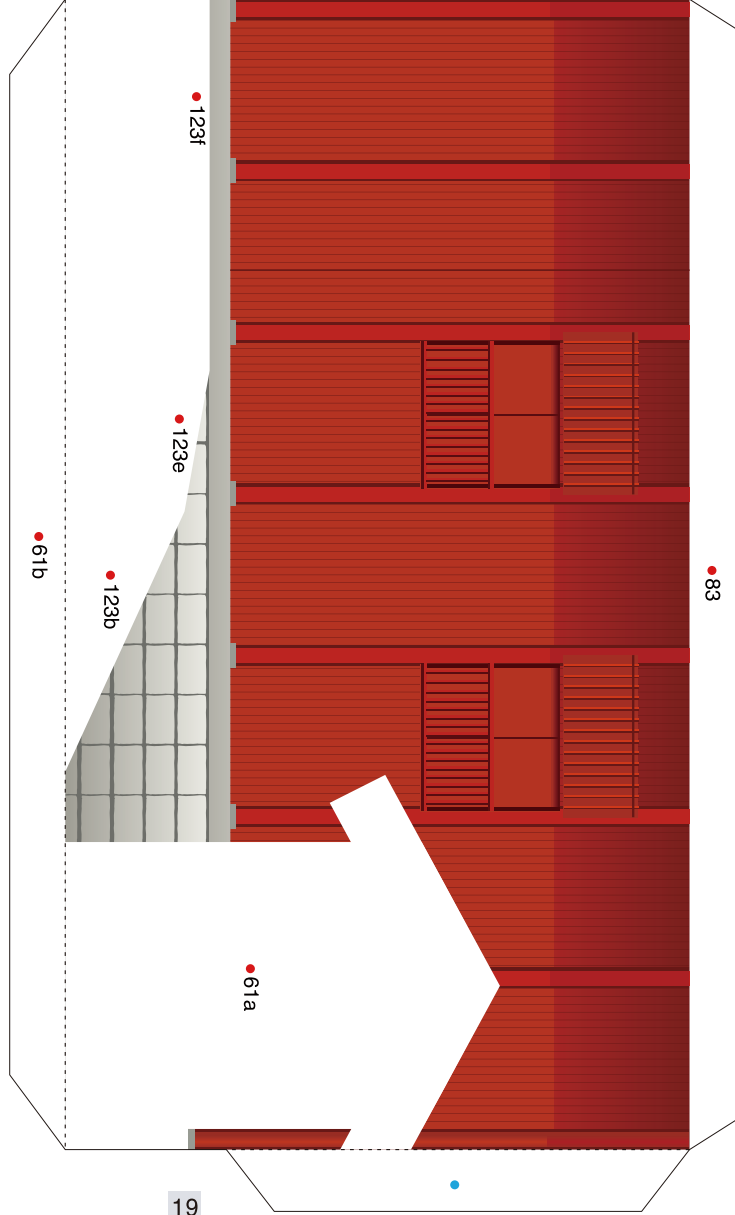
© Canon Inc. © A&A



60

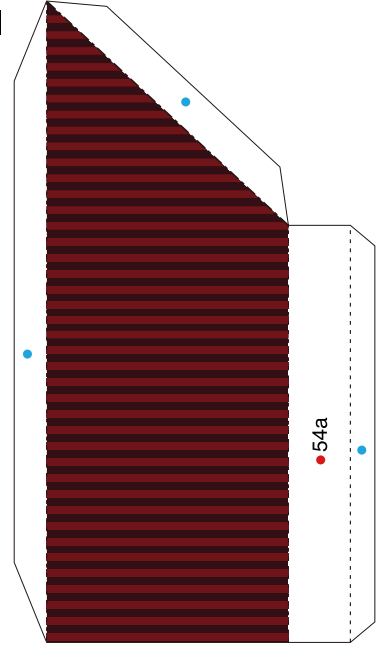


61

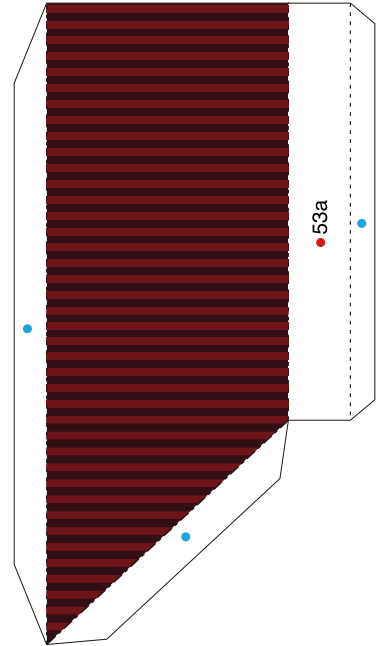


19

62



63



Shuri Castle (Japan) : Pattern

© Canon Inc. © A&A

