



Assembly Instructions

..... **Mountain fold** (dotted line)
*Make a mountain fold.

- · - · - **Valley fold**
(dashed and dotted line)
*Make a valley fold.

—— **Scissors line** (solid line)
*Cut along the line.

▲ **Black triangle**
Glue here



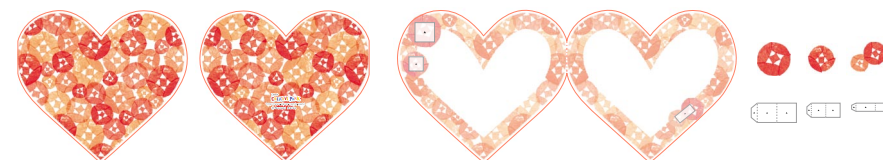
You will need

scissors, paste, a used ballpoint pen (tracing along the fold lines makes them easier to fold)

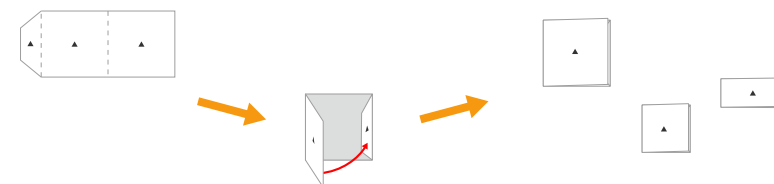


Caution: Glue, scissors, and other tools may be dangerous to young children so be sure to keep them out of the reach of young children.

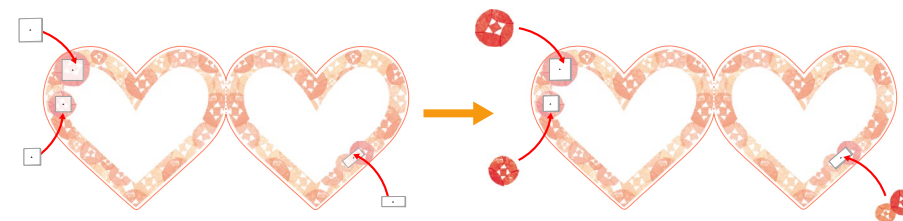
1 Cut out the parts and fold them along the fold lines on each.



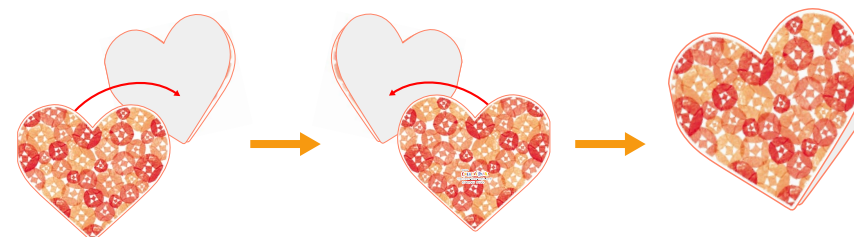
2 Fold up the glue tabs A~C as shown in the diagram.



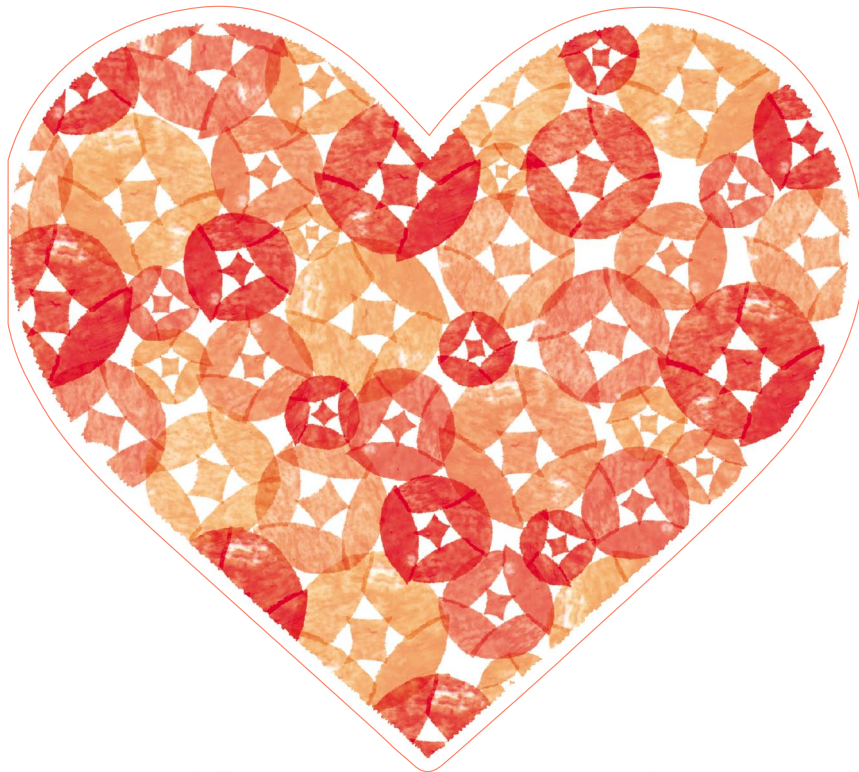
3 Attach the parts from step 2 to their respective glue spots, and attach the roses A~C on top.



4 Glue the Front cover and Back cover to 3, and you're finished!



● Front cover



● Back cover



● Base paper



● Rose A



● Rose B



● Rose C



● Glue tab A



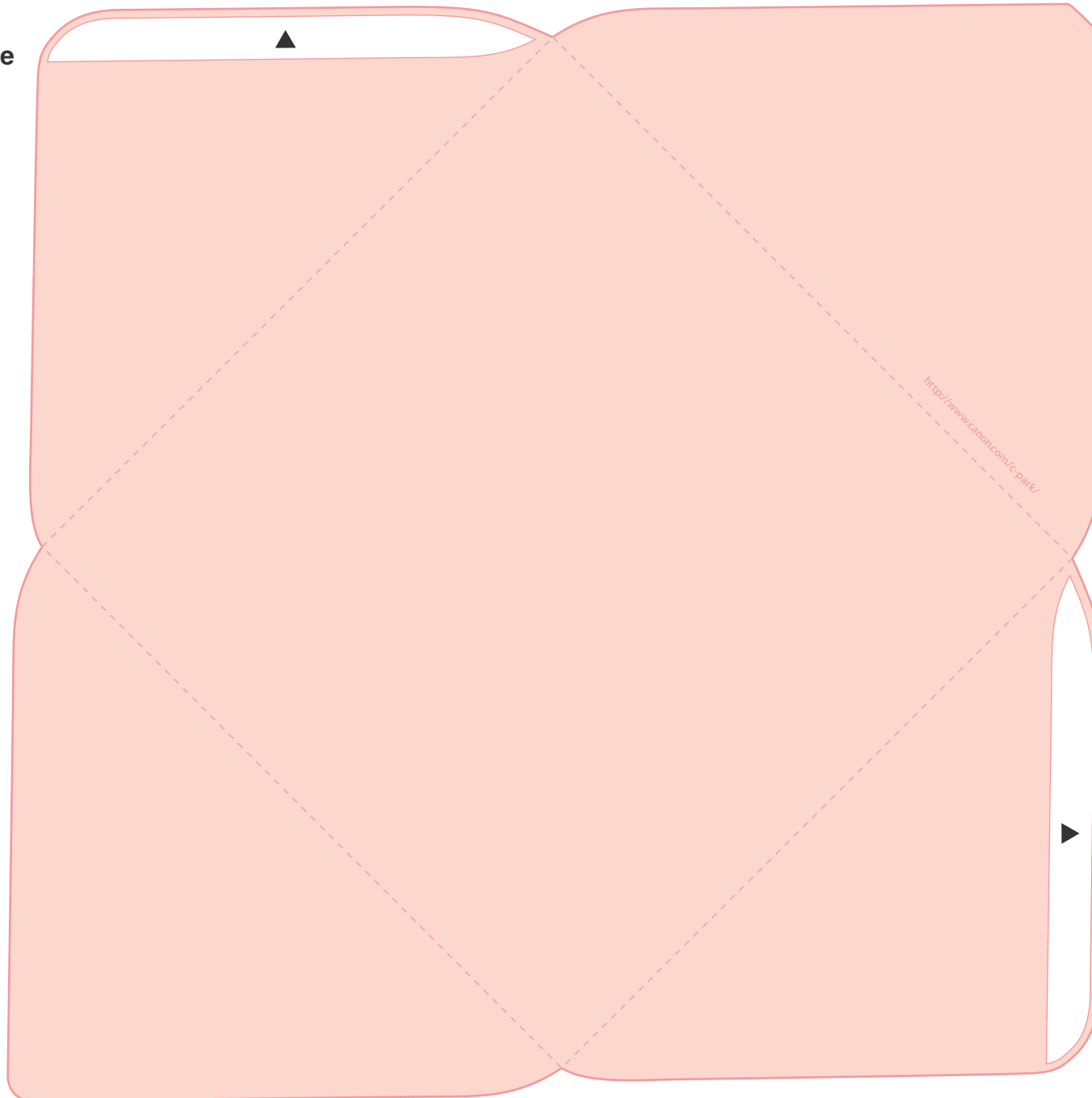
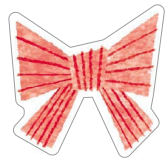
● Glue tab B



● Glue tab C



● Envelope



Assembly Instructions

