



Assembly Instructions

..... **Mountain fold** (dotted line) ——— **Scissors line** (solid line)
*Make a mountain fold. *Cut along the line.

- - - - - **Valley fold**
(dashed and dotted line)
*Make a valley fold.



You will need

scissors, paste, a used ballpoint pen (tracing along the fold lines makes them easier to fold)



Caution: Glue, scissors, and other tools may be dangerous to young children so be sure to keep them out of the reach of young children.

1 Cut out the parts and fold them along the fold lines on each.

Front cover



Message A



Message B



Back cover



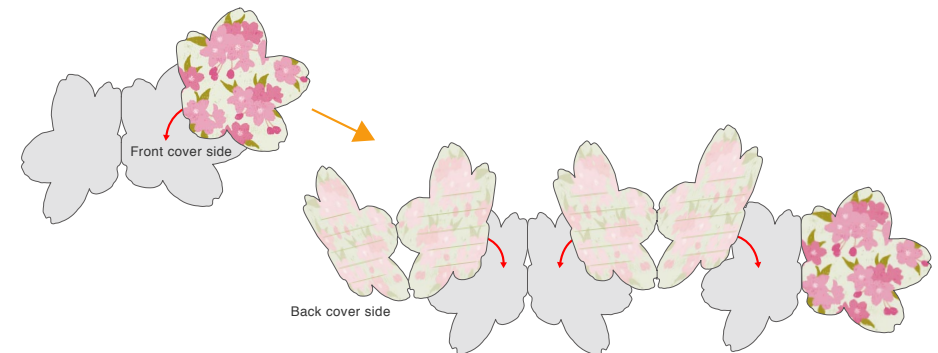
Message C



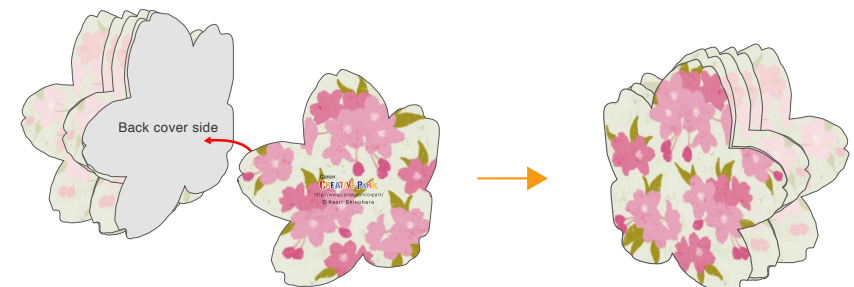
Message D



2 Glue the front cover to the back side of part A, and then glue part B to the other half of part A, and continue in order with part C and D, matching up the shape of the petals.



3 Glue the back cover to the back cover side of part D, and you're done!



● Front cover



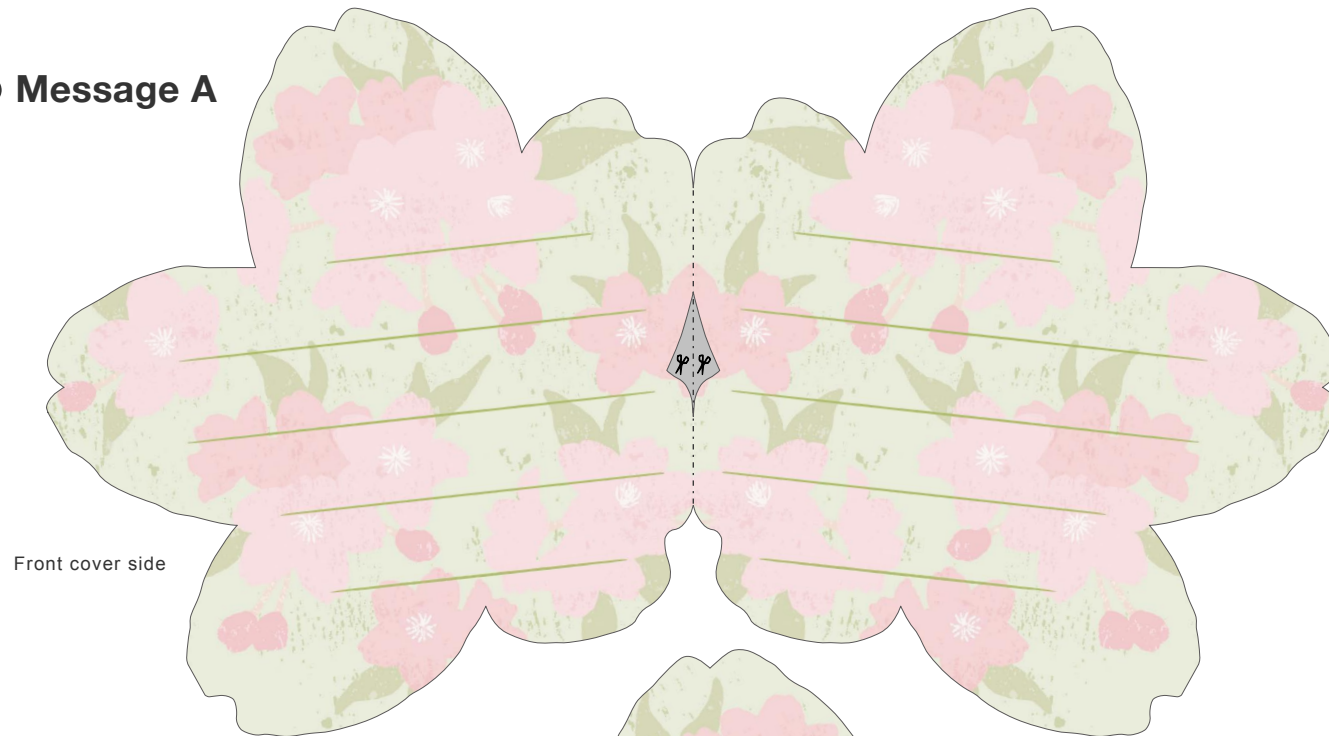
● Back cover



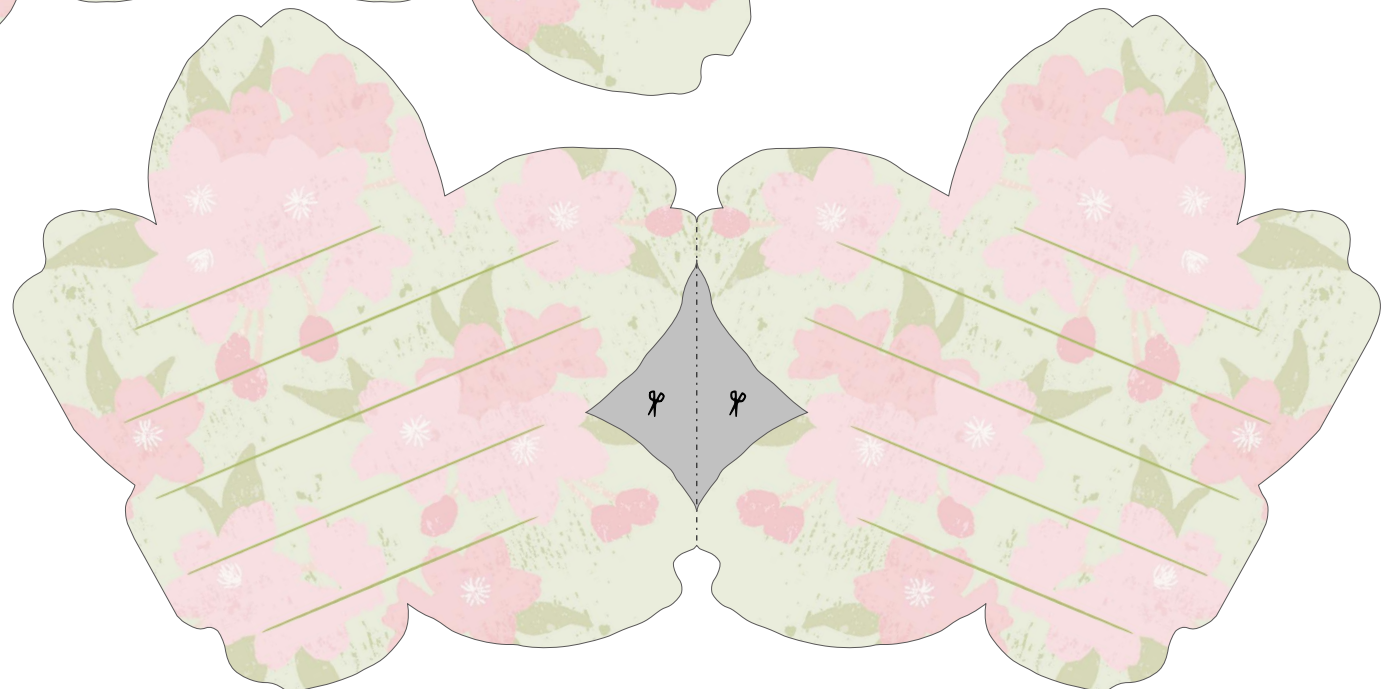
● Stickers



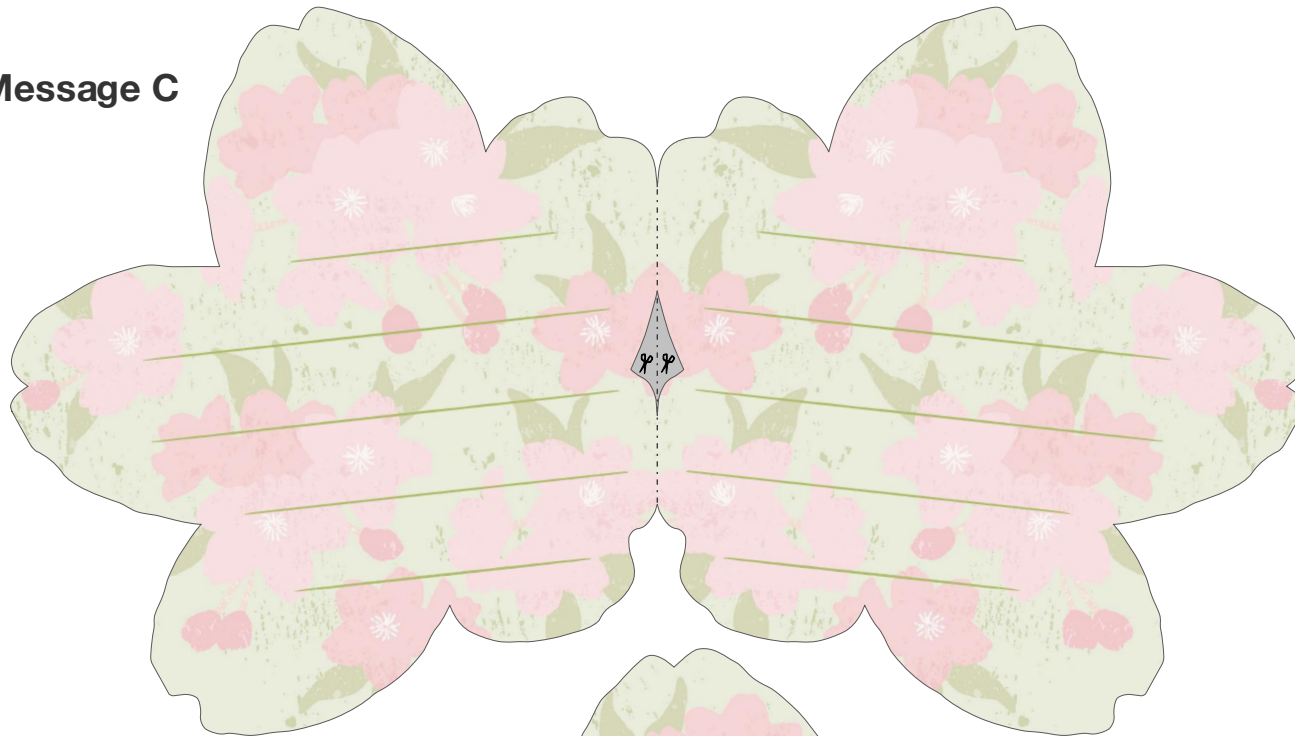
● Message A



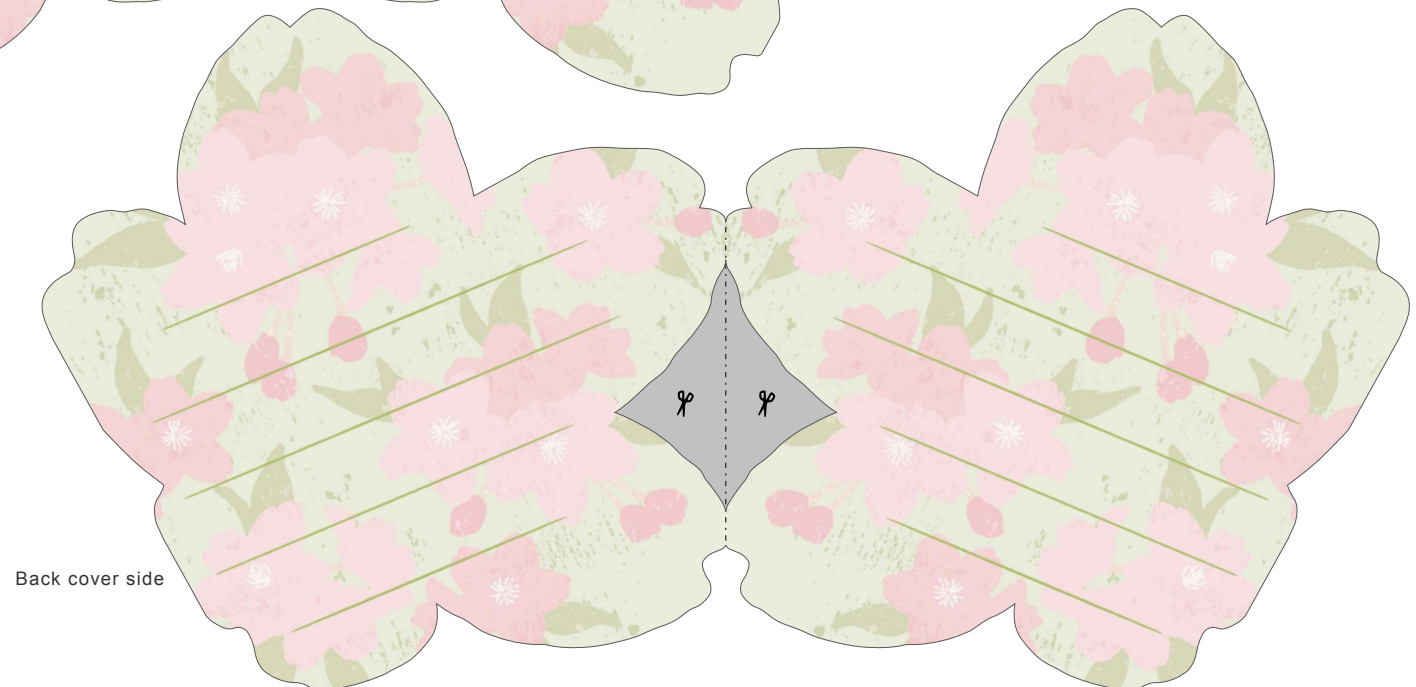
● Message B



● Message C

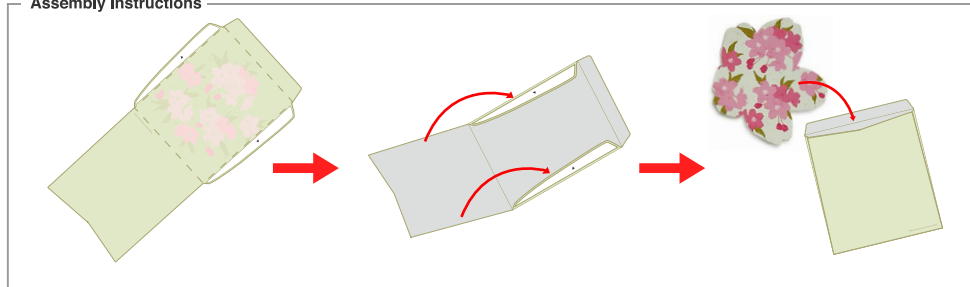


● Message D



Back cover side

Assembly Instructions



● Envelope

