



### Assembly Instructions

----- **Mountain fold**(dotted line)      ——— **Scissors line**(solid line)  
\*Make a mountain fold.      \*Cut along the line.

▲ **Black triangle**  
Glue here



scissors, paste, a used ballpoint pen (tracing along the fold lines makes them easier to fold)

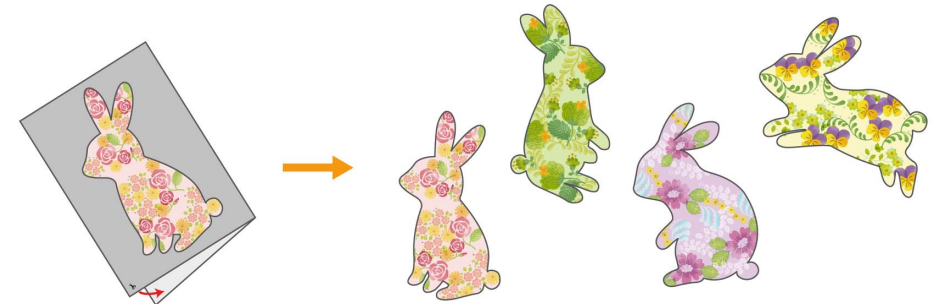


**Caution:**Glue, scissors, and other tools may be dangerous to young children so be sure to keep them out of the reach of young children.

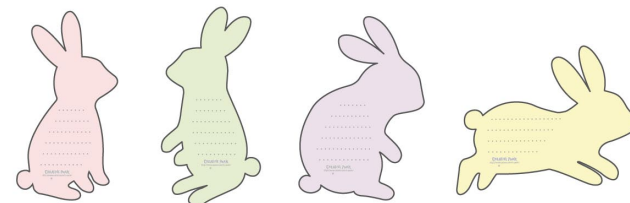
**1** Cut out the parts and fold them along the fold lines on each.



**2** Fold the card in half, glue it together, cut out the shape along the lines, and it's complete.



**3** There is a space for a message on the back. Write a message on the card, put it in an envelope, and attach your favorite sticker.



● Card (Rabbit 1)



● Card (Rabbit 2)



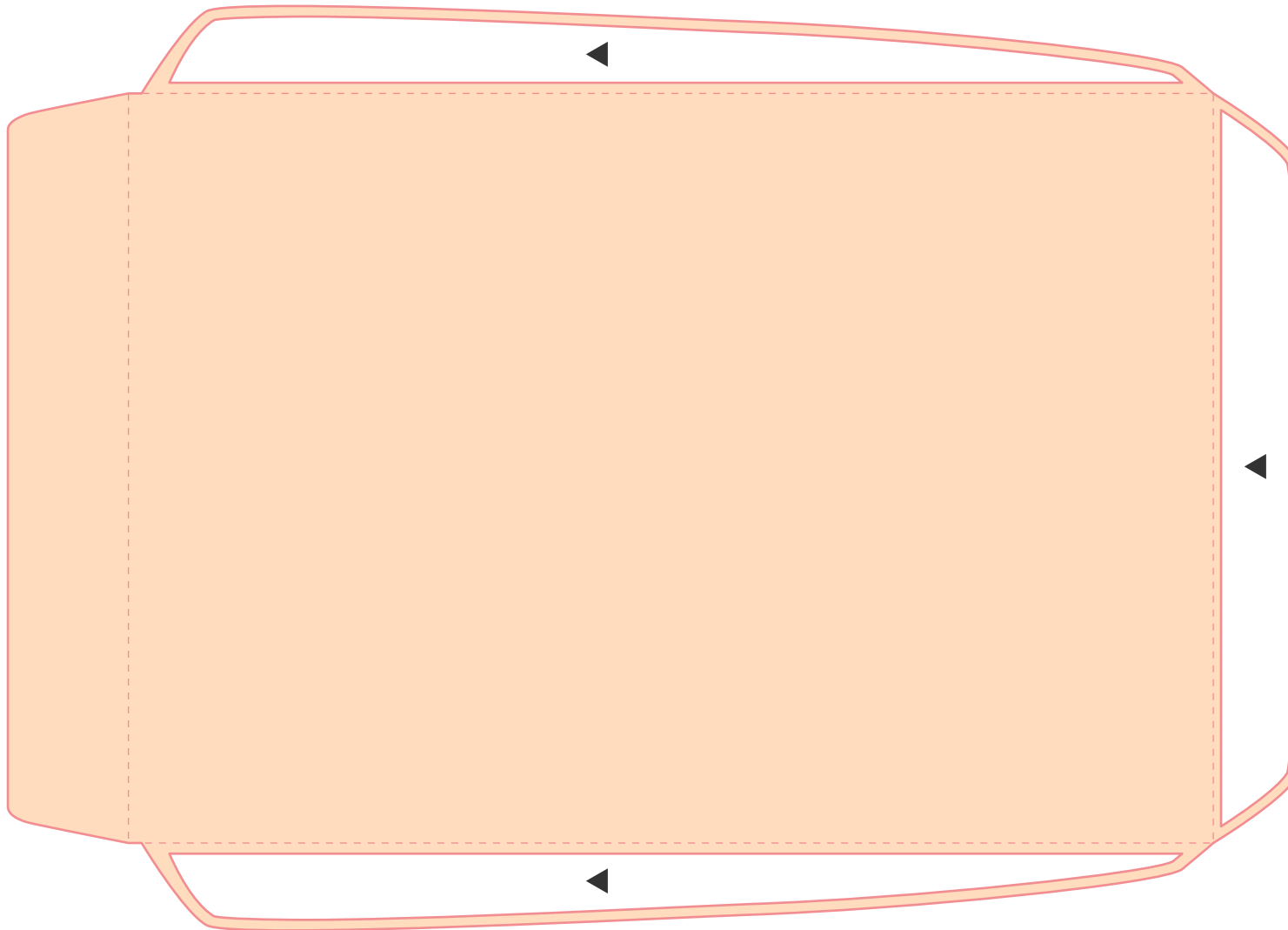
● Card (Rabbit 3)



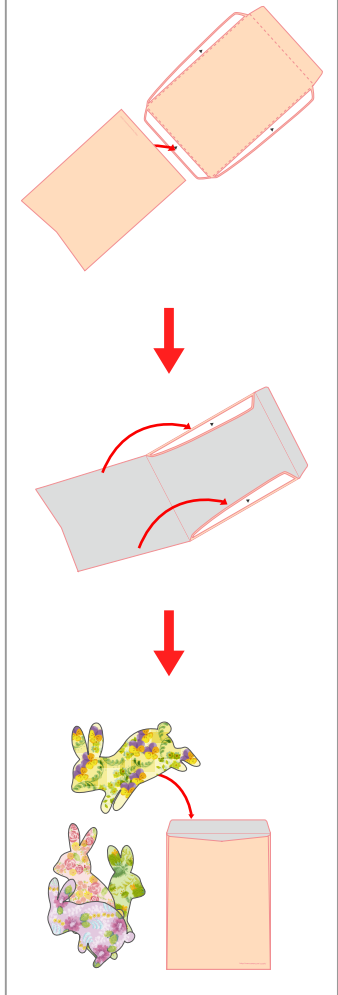
● Card (Rabbit 4)



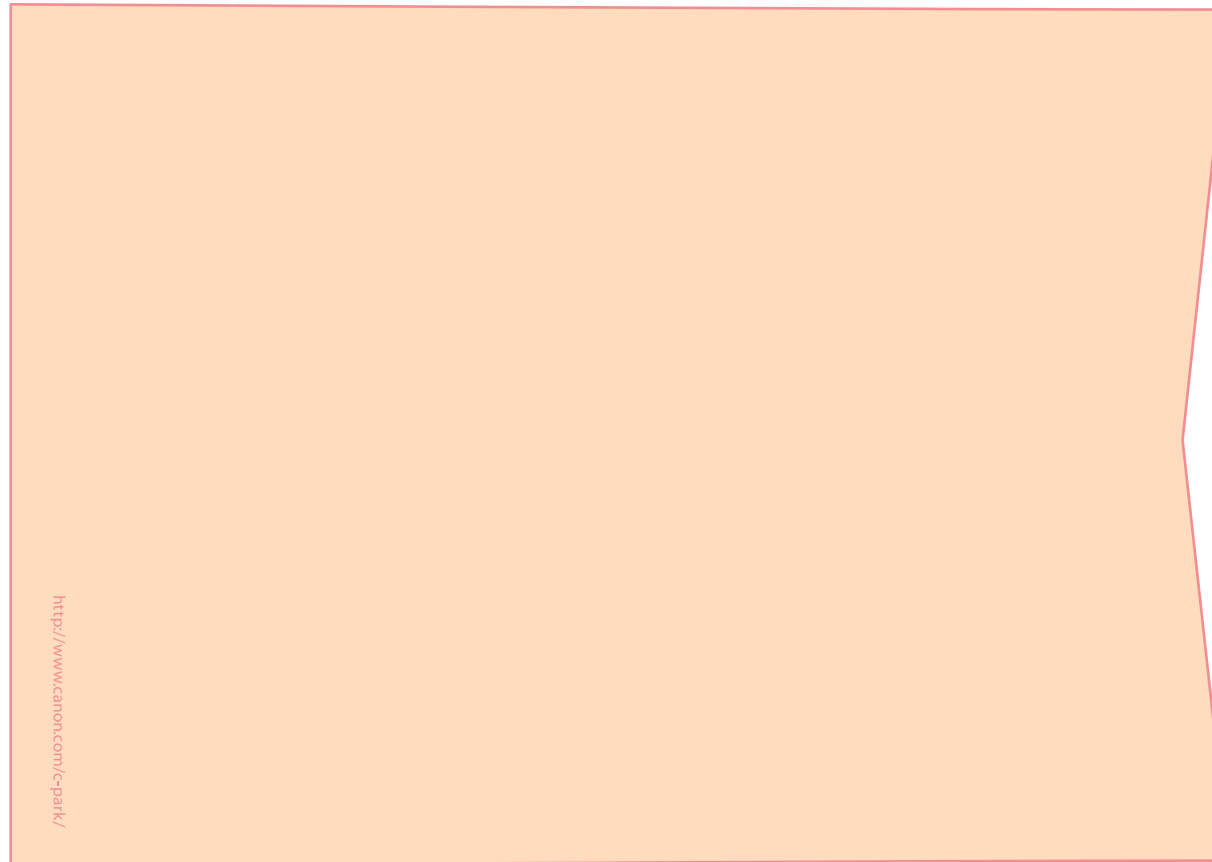
## ● Envelope



## Assembly Instructions



## ● Envelope



## ● Stickers

