



### Assembly Instructions

- **Mountain fold** (dotted line)  
\*Make a mountain fold.
- **Valley fold**  
(dashed and dotted line)  
\*Make a valley fold.
- **Scissors line** (solid line)  
\*Cut along the line.
- ▲ **Black triangle**  
\*Glue here.



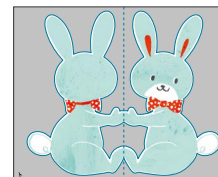
**You will need**  
scissors, paste, a used ballpoint pen (tracing along the fold lines makes them easier to fold)



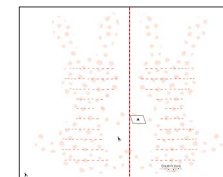
**Caution:** Glue, scissors, and other tools may be dangerous to young children so be sure to keep them out of the reach of young children.

- 1** Cut out the parts and fold them along the fold lines on each.

Card (back/front)



Card (inside)



Part A



Part C

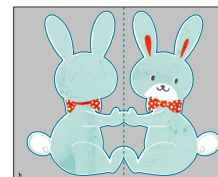


Part D

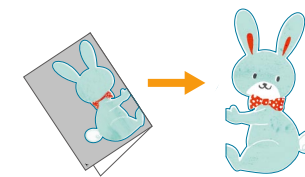


- 2** Glue card (back/front) to the back of card (inside). Next, fold the card and cut out the card using scissors, by following the scissors lines.

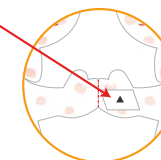
Card (back/front)



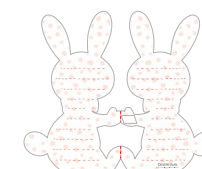
Back of card (inside)



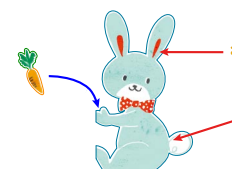
- 3** Assemble part D, and attach it to the hand on the right of card (inside).



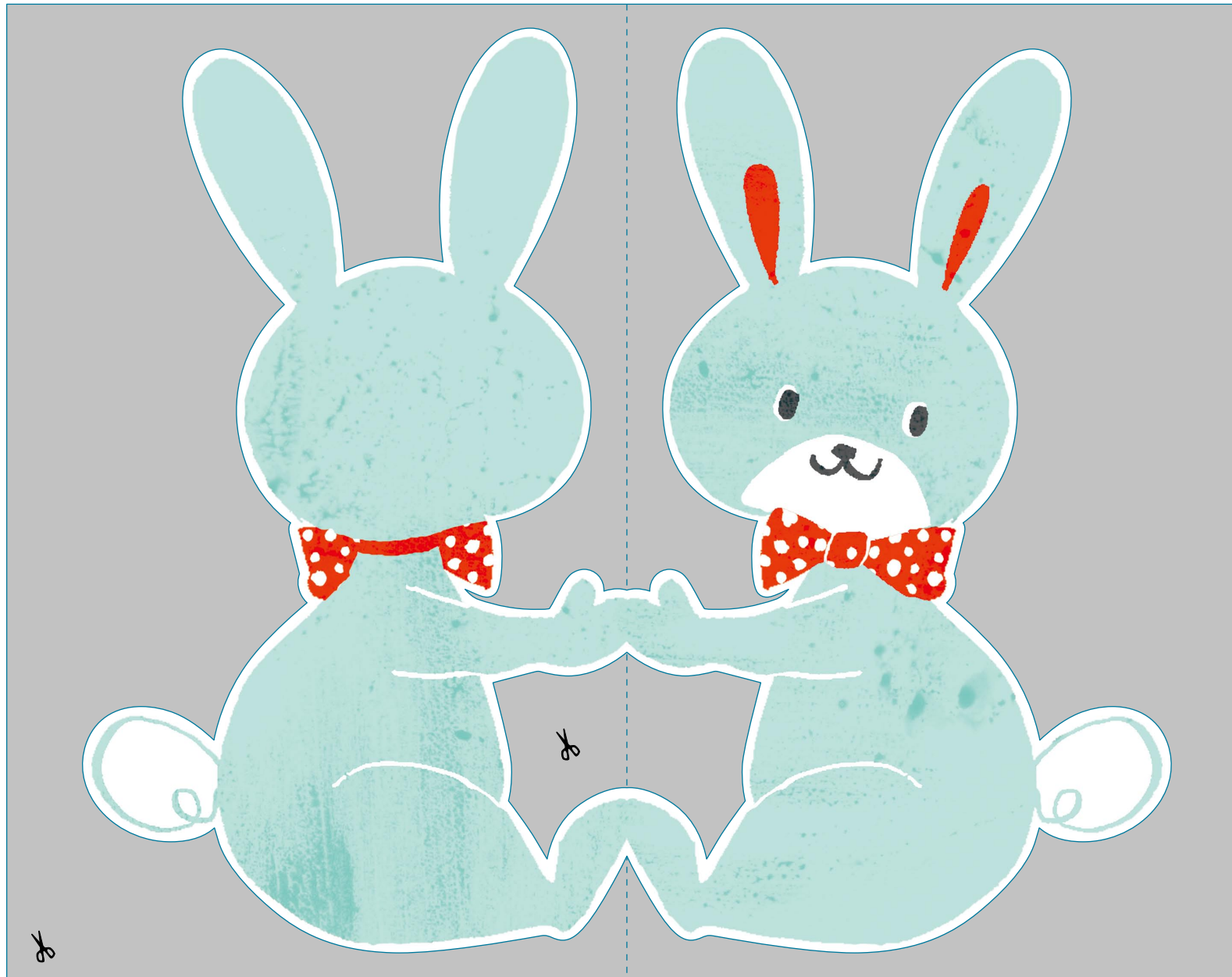
Card (inside)



- 4** Attach parts A and B wherever you like, insert part C through the ring part D, and you're done! Write a message and put it in the envelope, and attach whichever sticker you like.



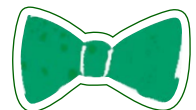
● Card (back/front)



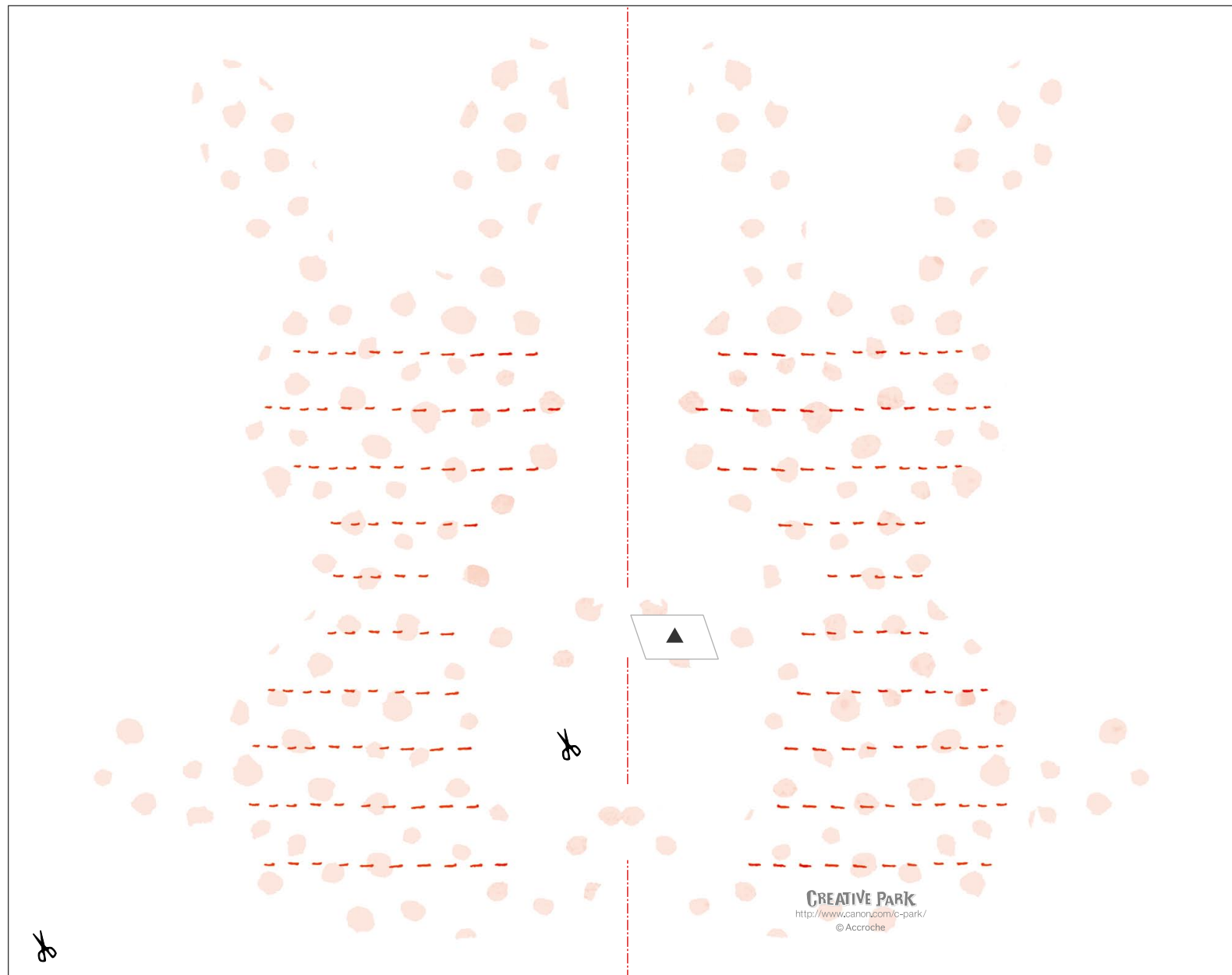
● Part A



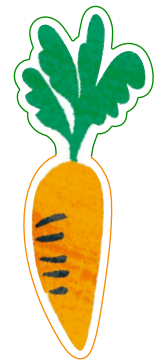
● Part B



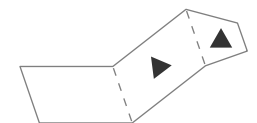
● Card (inside)



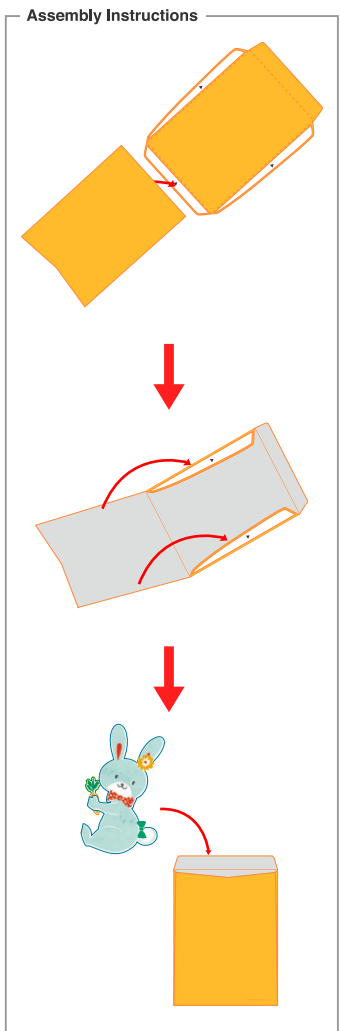
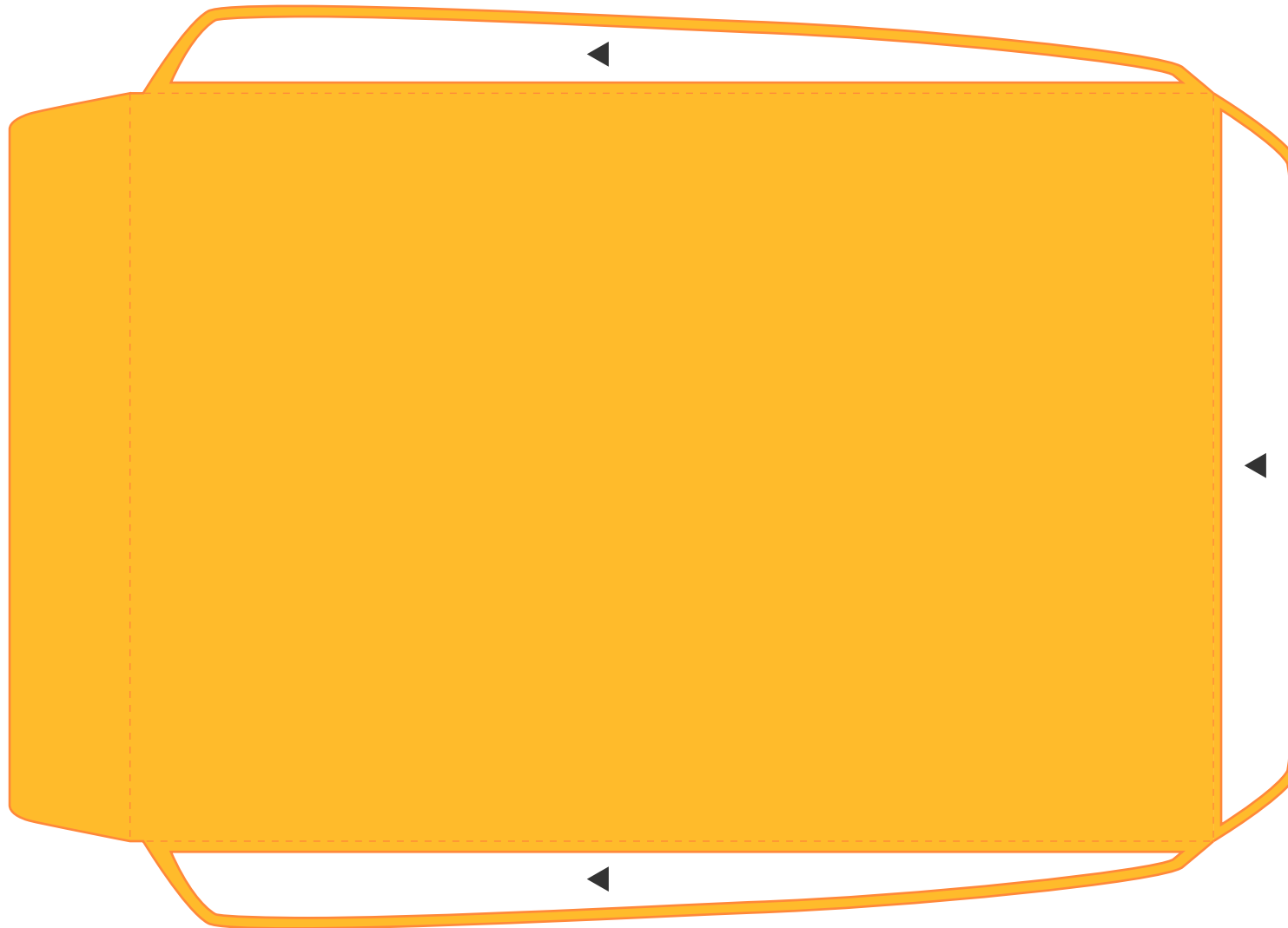
● Part C



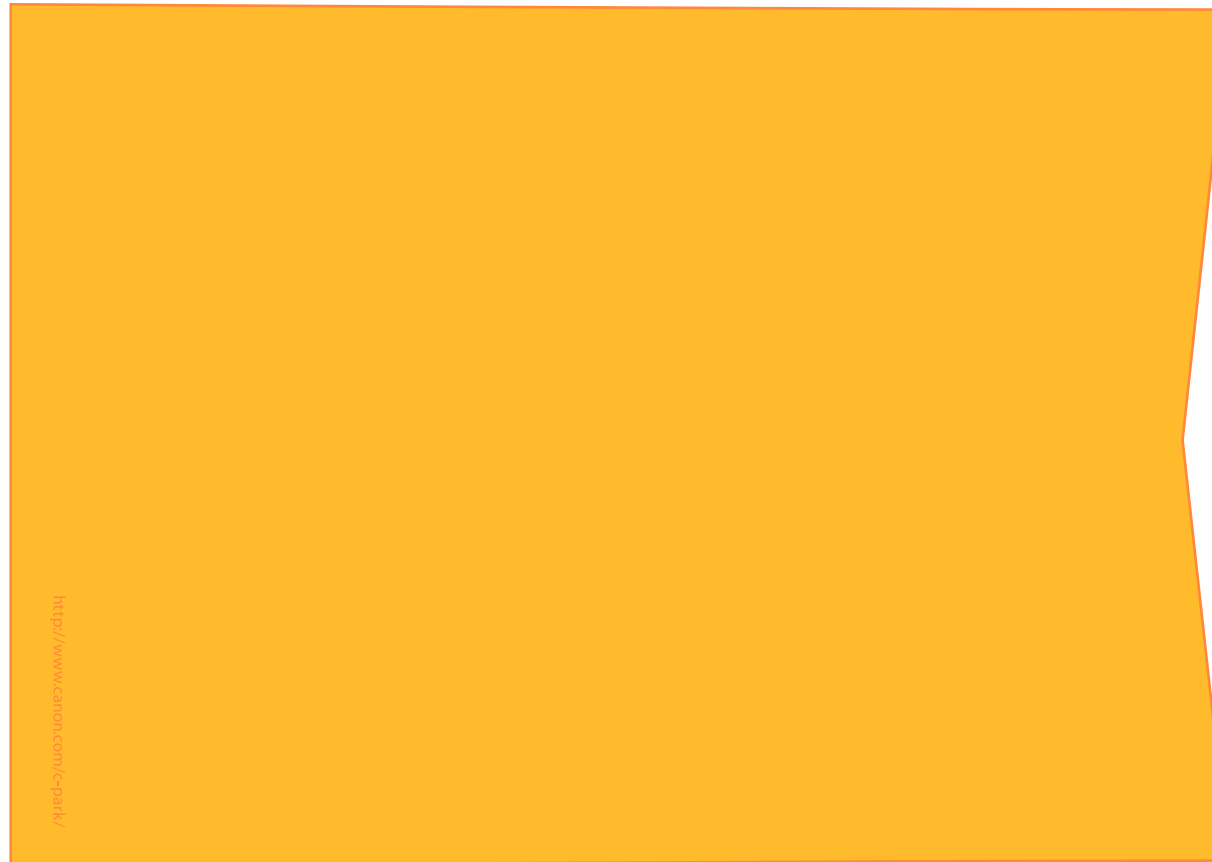
● Part D



● Envelope



● Envelope



● Stickers

