

● Ivy



● Pachira



● Sansevieria "Golden Hahnii"



This file only contains parts for the pot itself. Please download the file for the ornamental plant separately.

Assembly Instructions

- 1 : Carefully cut out the parts.
- 2 : Fold along the dotted lines, making mountain or valley folds as indicated.
- 3 : Follow the order indicated in the instructional diagrams, and attach the parts to assemble.
- 4 : Assemble all the pieces together, and you're done!

Caution

- Keep glue away from small children.
- Be careful not to cut your fingers when using scissors.
- Be careful not to cut yourself on the edges of the paper.
- Keep the completed model away from sources of heat.

Tools

Scissors
Glue (We recommend craft glue.)
Ruler
A used ball-point pen

Assembly Tip

Trace along the folds with a ruler and a used pen (no ink) to get a sharper, easier fold.

Explanation of Symbols



Solid line : Scissors line



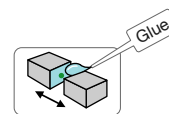
Mountain fold (dotted line) :
Make a mountain fold



Red solid line : Cut in line

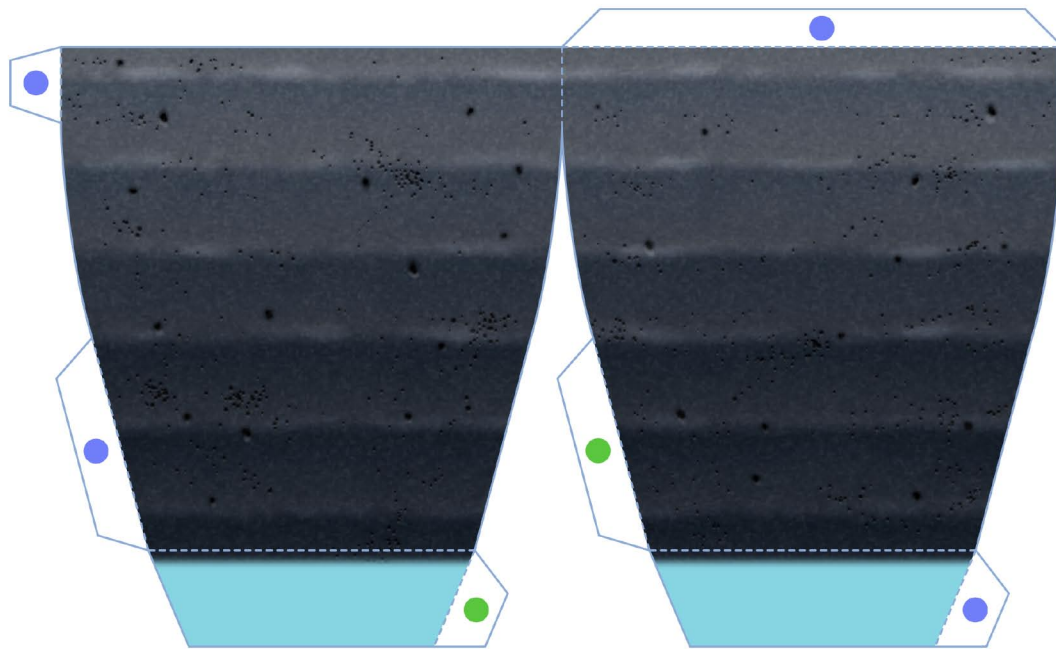


Valley fold
(dashed and dotted line) :
Make a valley fold



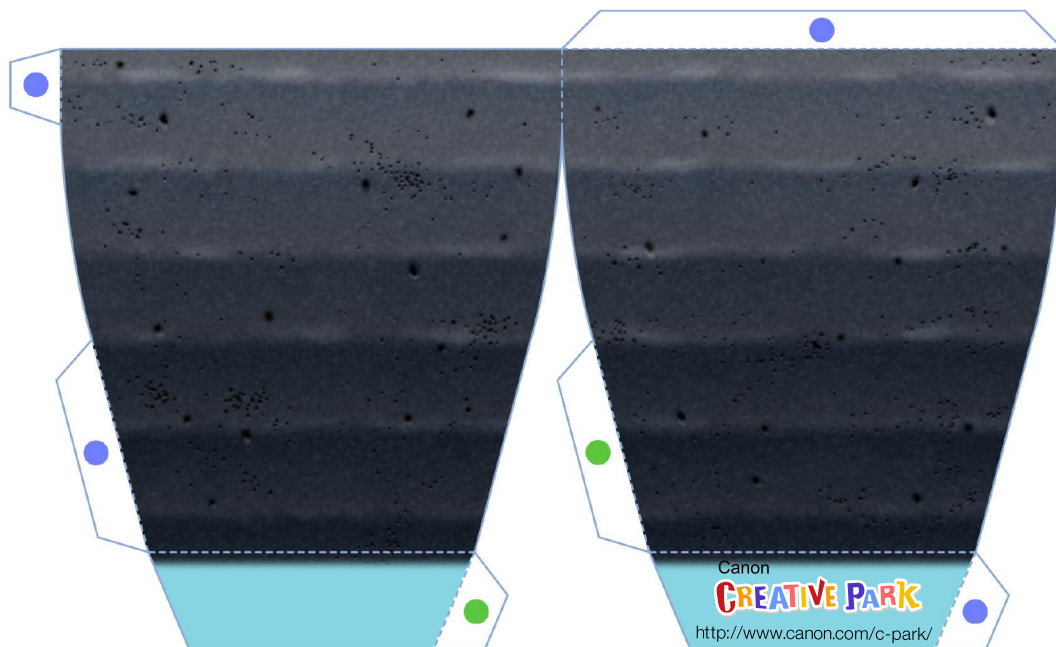
The glue spot (colored dot)
shows where to apply the glue.

- Glue spot (Green dot)
Glue within the same part.
- Glue spot (Blue dot)
Glue to the rear of the other part.
- Glue spot (Red dot)
Put glue on the reverse side.

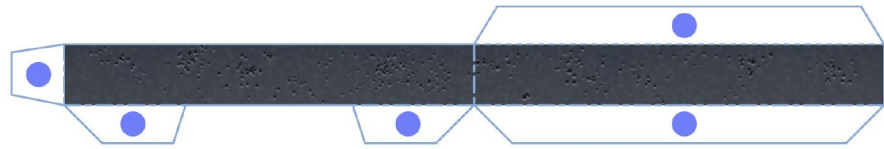


H-01

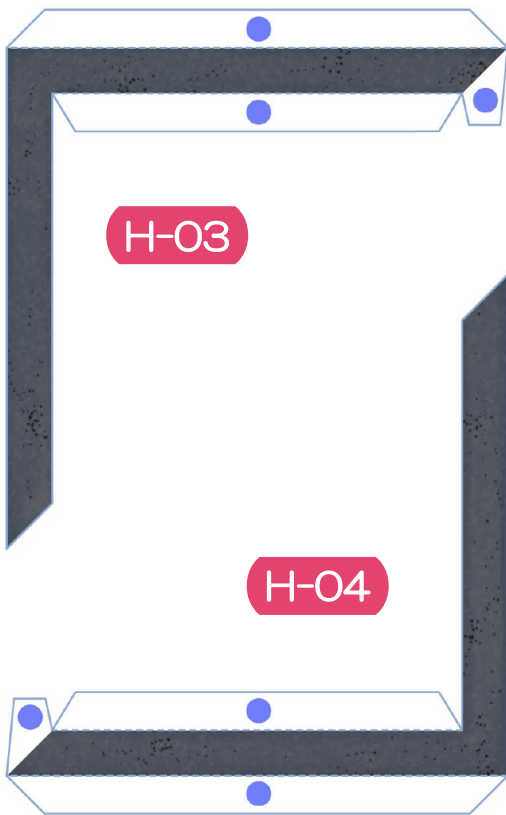
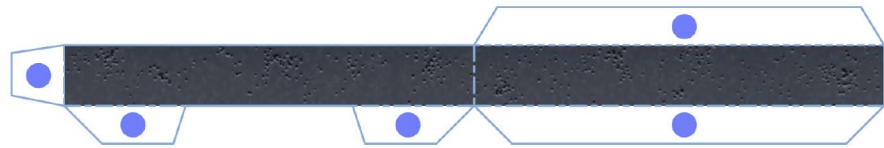
H-02



H-05



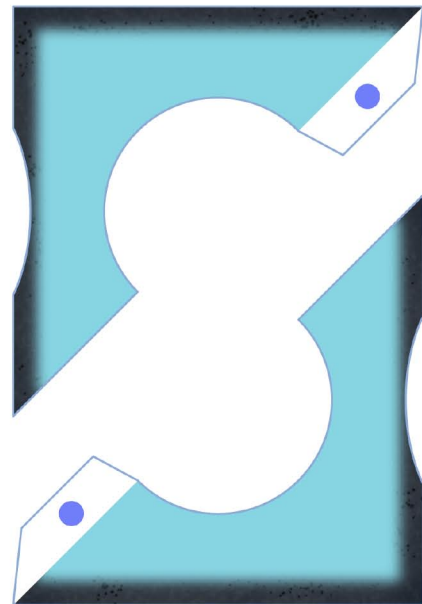
H-06



H-03

H-04

H-07



H-08