

# Nintendog – Golden Retriever Instructions

By Frozen\_Fish

## Part 1 – Face



Start by cutting out and assembling the eyes and snout



Then Glue these pieces together



Cut out and fold the other portions of the face...



And glue in place

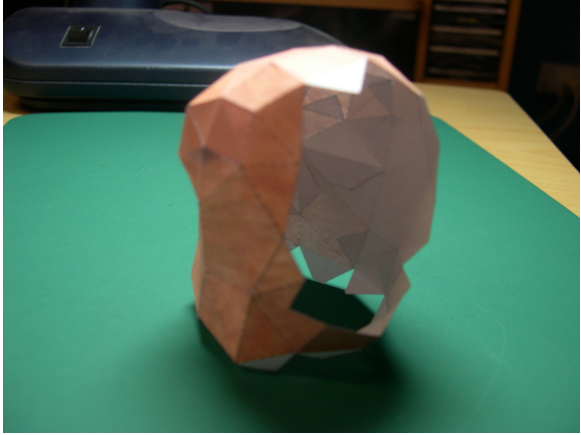
## Part 2 – Head



Cut out and fold pieces of head making sure to keep in mind where the pieces attach to each other



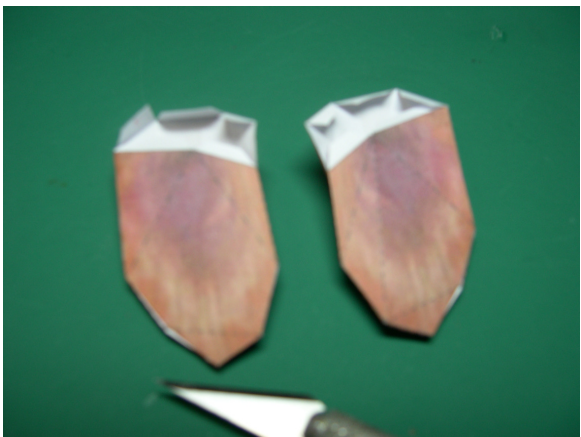
Glue pieces together before assembling



Assemble head as shown



Proceed to glue face into head making sure all tabs are glued correctly



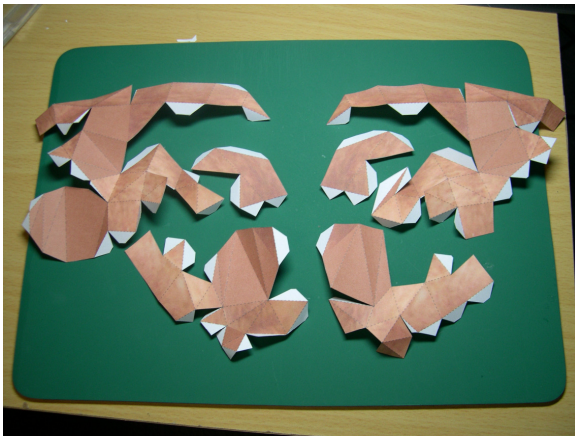
Cut out, fold and assemble ears  
(Self-Explanatory)



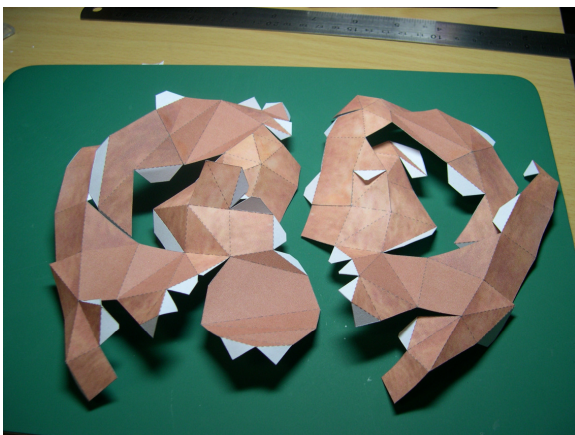


Attach ears to head

### Part 3 – Body



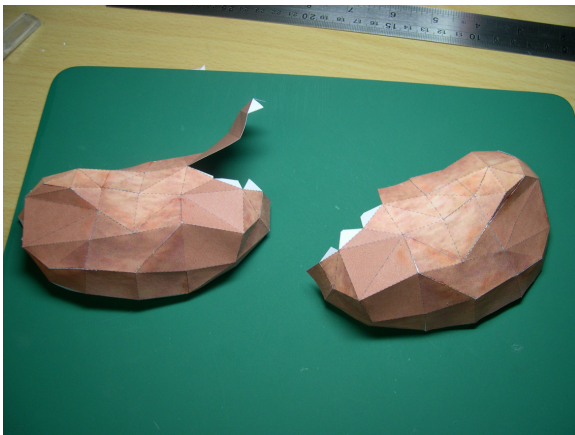
Cut out and fold pieces of body



Glue pieces together before assembly



Assemble right half of body  
leaving neck flap open

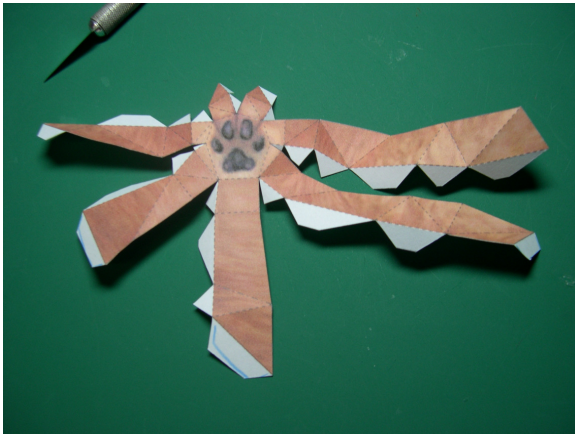


Assemble left half of body and  
glue the two halves together,  
and then glue the neck flap  
down



Congratulations you've  
assembled the body and head,  
now it's time to build the legs

## Part 4 – Legs



Cut out and fold front legs



Assemble as shown



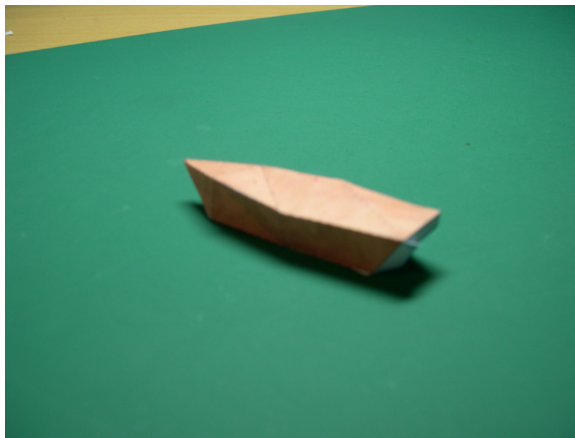
Cut out and fold hind legs





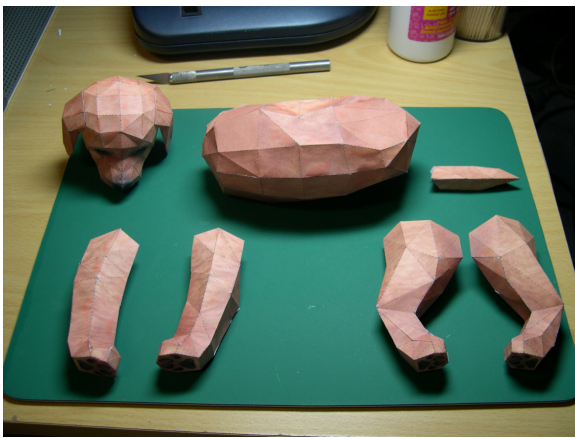
Assemble as shown

### **Part 5 - Tail**



Very Self-Explanatory

### **Part 5 - Final Assembly**



Gather all parts and proceed to glue them into position on the body try to keep the legs as even as possible.

