

Bob's Card Models

www.bobscardmodels.altervista.org and www.zealot.com [Resources]



Eurocopter EC145T2 Scale: 1:40

The **Eurocopter Group** is a global helicopter manufacturing and support company. It is the largest in the industry in terms of revenues and turbine helicopter deliveries. Its head office is located in France at Marignane (Marseille International Airport).

The EC145T2T, is the newest 4-ton class twin engine, multi-purpose helicopter in the product range of Eurocopter, and has seen more than 800 deliveries worldwide and has accumulated over 3 million flight hours

The livery chosen is that of the Swiss Air Rescue Ambulance company, **REGA**, whose brave pilots are on permanent stand-by in world-wide rescue procedures, often in very difficult weather conditions and terrain, and especially in the mountains.

Specifications (Wikipedia)

General characteristics

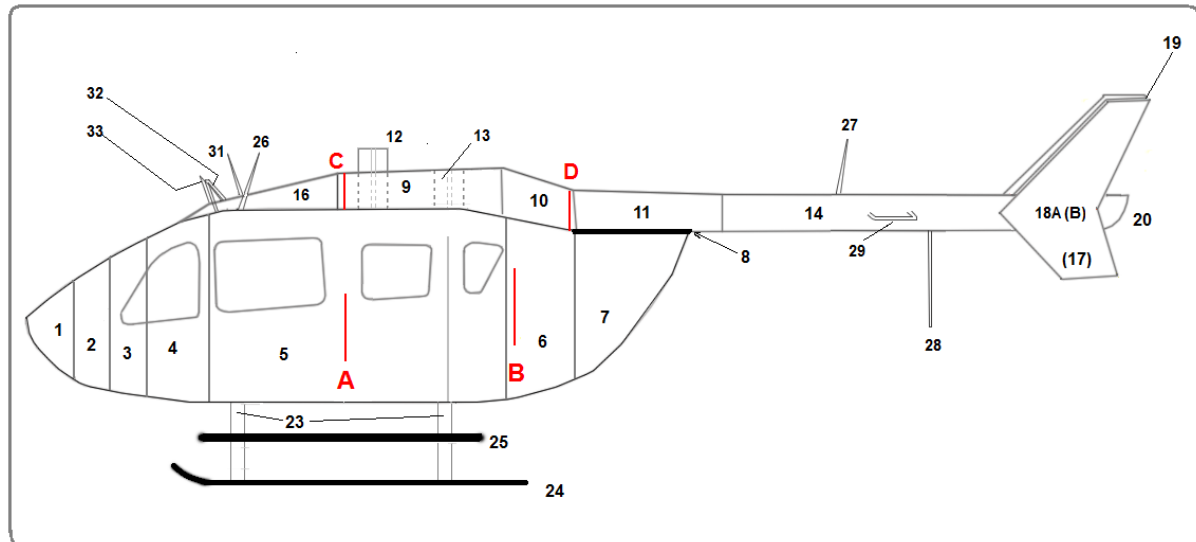
Crew :	1 pilot
Capacity :	up to seven passengers or two crew and two patients (Air Ambulance variant) or 1,455 kg payload
Length:	12.16 m
Height:	3.51 m
Empty weight:	1,455 kg
Max takeoff weight:	2,910 kg
Powerplant:	2 × Turboméca Arrius 2B2 , 473 kW (634 hp) each or 2 x Pratt & Whitney Canada PW206B turboshaft engines rated at 498 kW (668 hp)
Main rotor diameter:	10.2 m
Main rotor area:	81.7 m

Performance

Max. speed :	287 km/h
--------------	----------

Cruising speed: 254 km/h
Service ceiling: 6,500 m
Rate of climb: 7.62 m/s

Building Instructions



Print all sheets on between 160 and 230g card, except Instructions and Sheet 6 which should be printed on 80 - 90g Paper.

Always carefully fit parts together before gluing, and make minor adjustments if necessary.

Bright Green areas must be cut out, BUT only after gluing any folds. The Instructions will tell you when!

Although the model is relatively small, bulkheads have also been used to keep the correct cross-sectional form of the fuselage; therefore, they don't have to be glued all around, but rather tacked in place (do not tack on the green areas, which will anyway be cut off). The bulkheads should not be pressed in firmly, but loosely, otherwise after gluing, an unwanted ribbing effect is seen on the outside.

NB:

Parts 1, 2 and 3: These should be cut oversize then bent/folded along the fold lines, then cut to size.

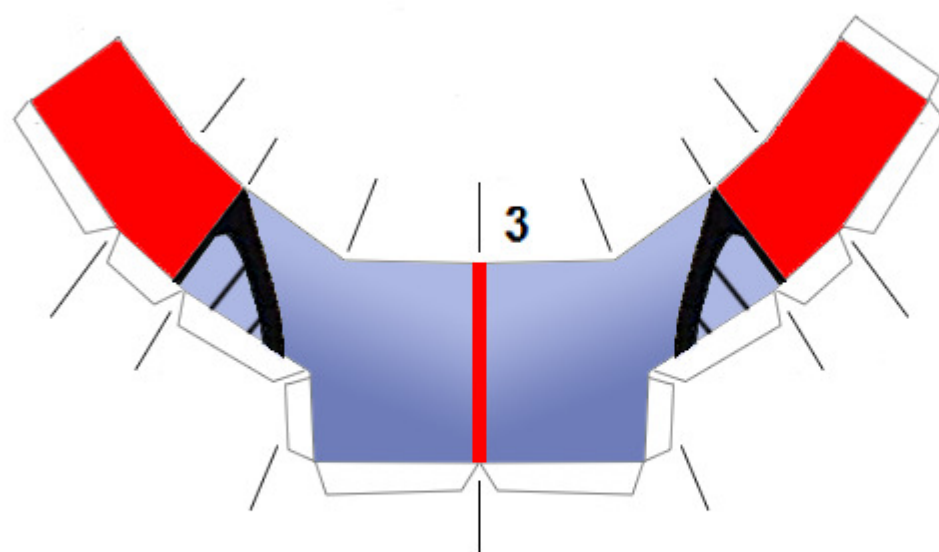
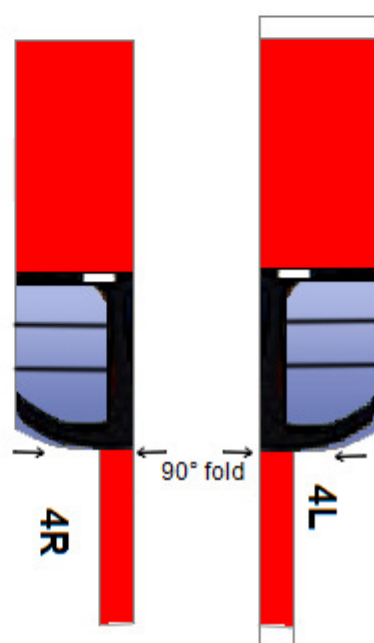
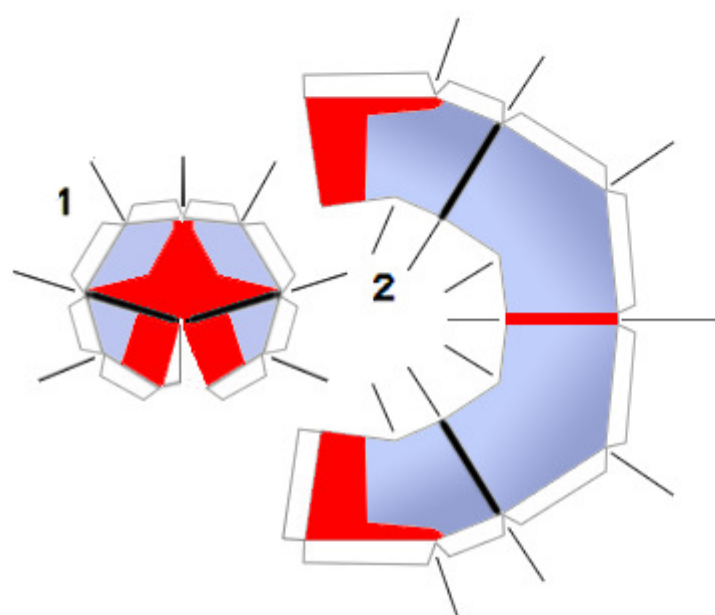
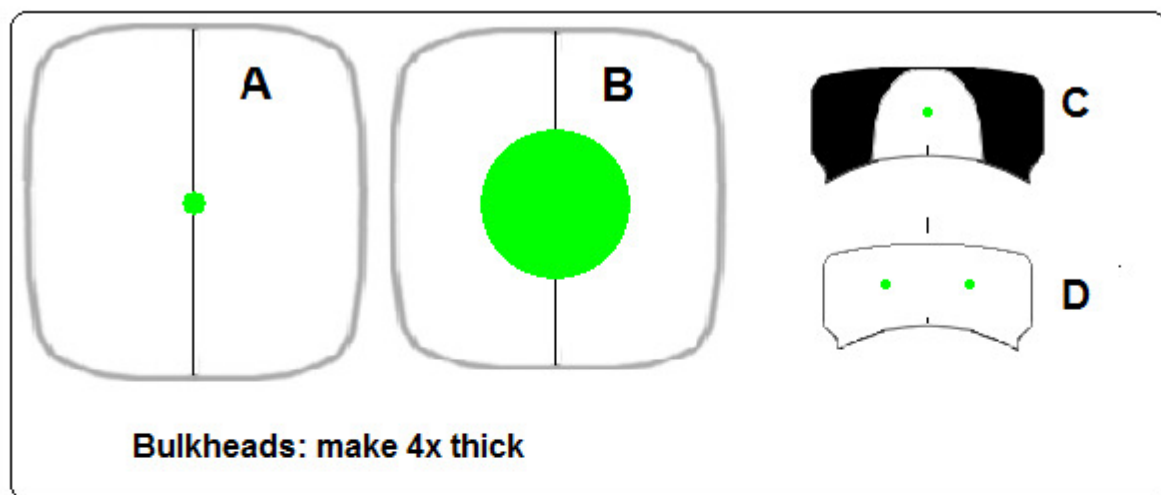
The parts should be assembled in the following order:

1. 1-2, 2-3, 3-4L, 3-4R
2. In nose cone, glue a 5-10g weight.
3. On 5, close/glue tab 'a'.
4. Glue 5-4L/4R.
5. Insert and tack/glue Bulkhead A.
6. Close/glue tab 'b' on 5.
7. Insert/glue Bulkhead B.
8. Close/glue 6.
9. 7-6, 6/7-5, 8-7.
10. Glue spacer 13 in place.
11. Close/glue 9, 10.
12. Insert C in 9 (1-2mm countersunk)
13. 9-10, insert D in rear of 10.
14. 12-9
15. 11-14: NOTE: Small tabs on 11 must be folded **INTO** the tube; To aid in inserting 11 through the front of 14, first loosely insert a piece of paper from the rear of 14 to hold down the tabs, insert 11, remove paper insert.
16. 11/14-10
17. 15A and 15B -11
18. Glue 16 in place

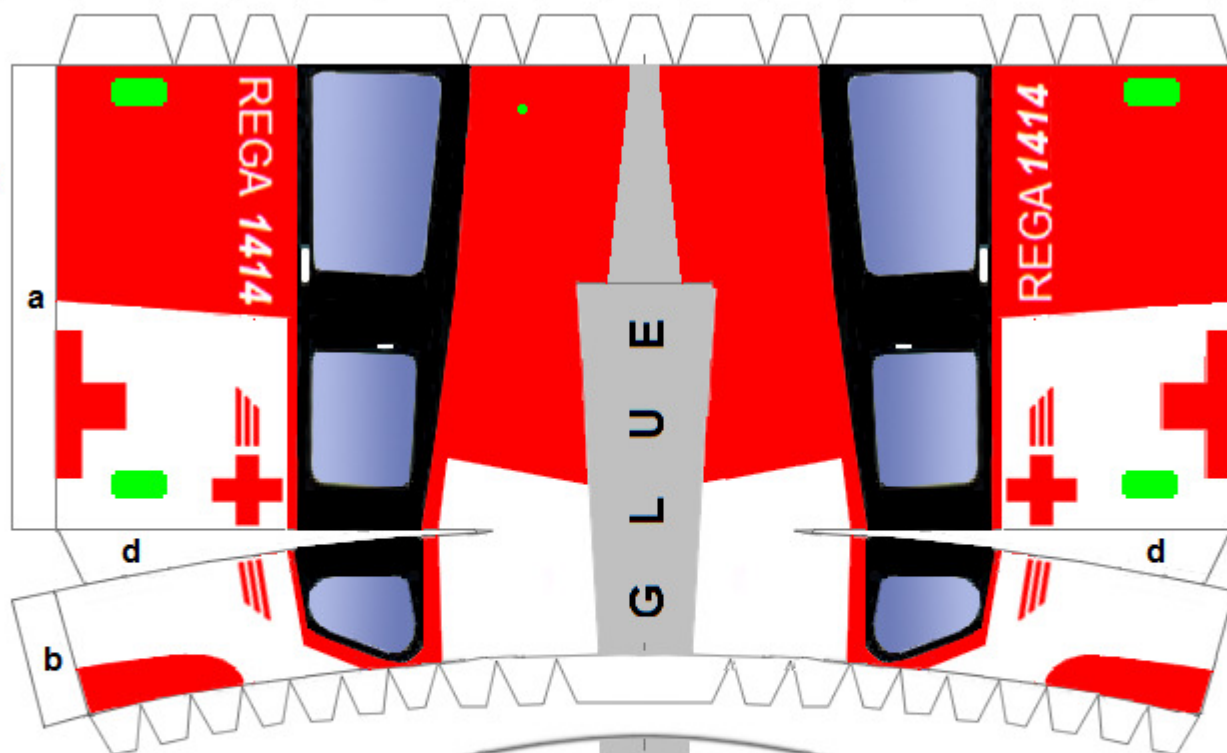
19. Glue 2 halves of 17 together, previously bending the 4 end fins 90° so that coloured sides point INWARDS, then glue on fins 18A and 18B. Glue central fin 19 in place. Insert in slit at end of 14, and glue in place.
20. Assemble and mount rear propeller.
21. Assemble main Prop with parts 21-22, and cap with 23. Glue onto cocktail stick, and cut to length.
22. Assemble undercarriage and skids, then glue in place.
23. Assemble all aerals and glue in place.

---oooOooo---

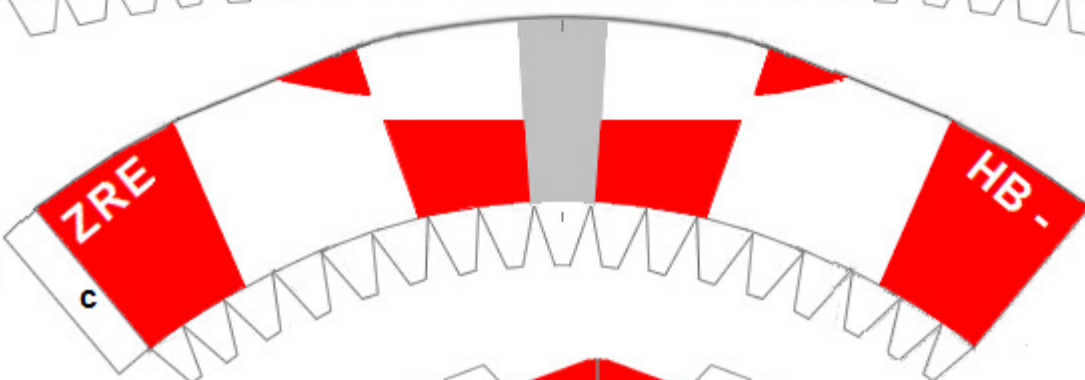




5



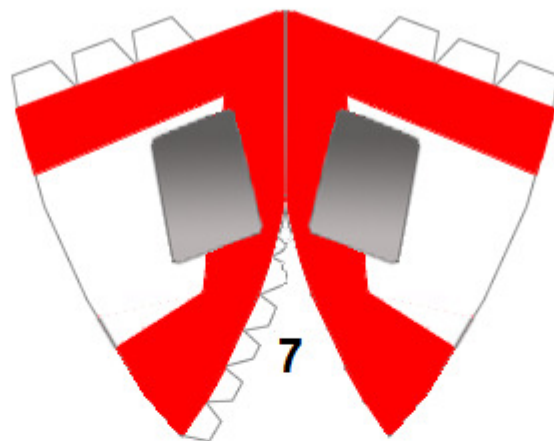
6



8



7



15A

15B

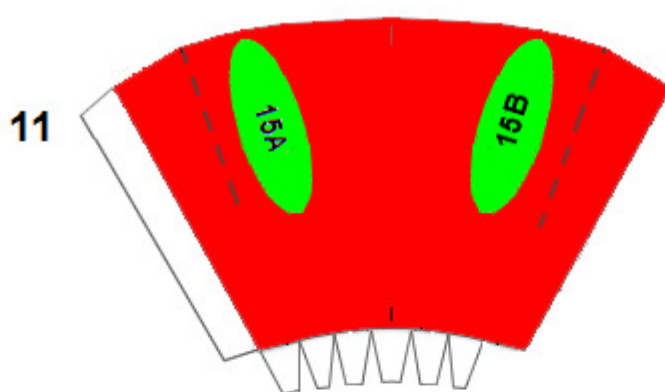
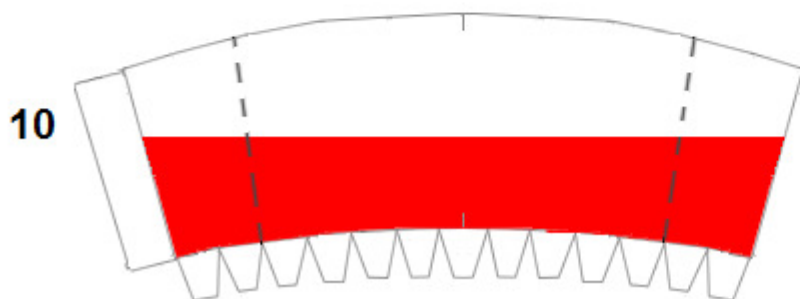
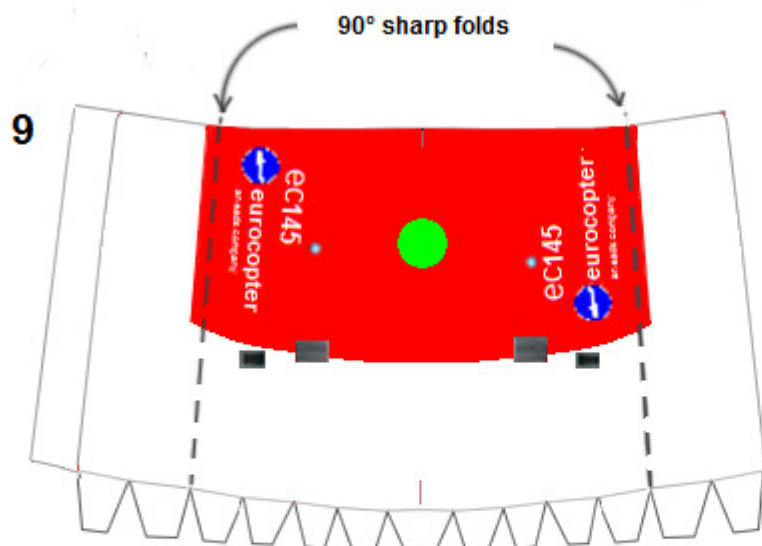


Exhausts

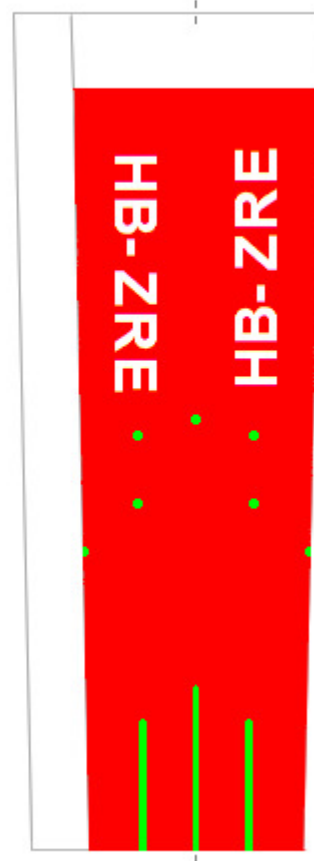
Roll 15A and 15B each around a 8mm diameter rod (black side INSIDE).

Insert in fuselage and glue in place.

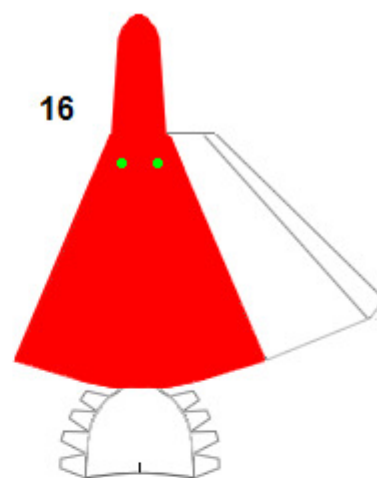
Cut off excess card so that the exhaust protrudes about 1-2mm.



14



16



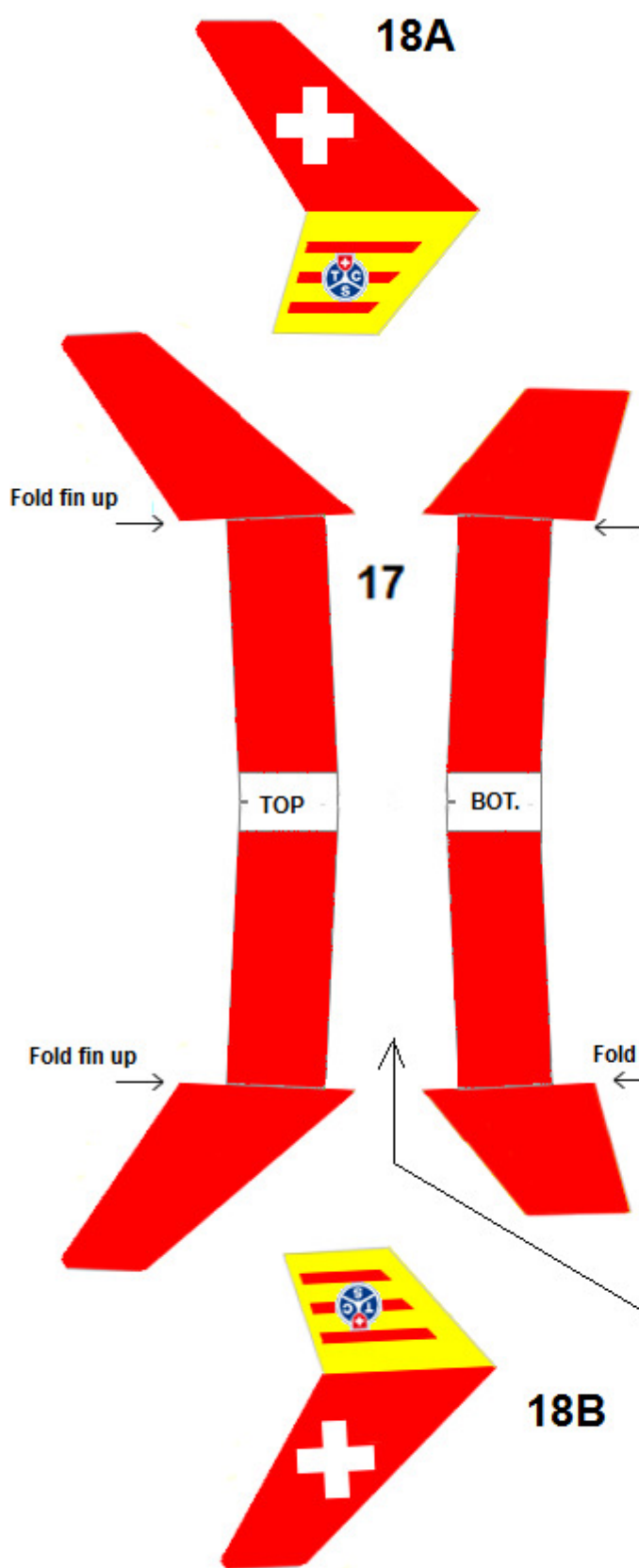
Prop Shaft Casing 12

Roll around (but do not glue to) a cocktail stick , glue paper.



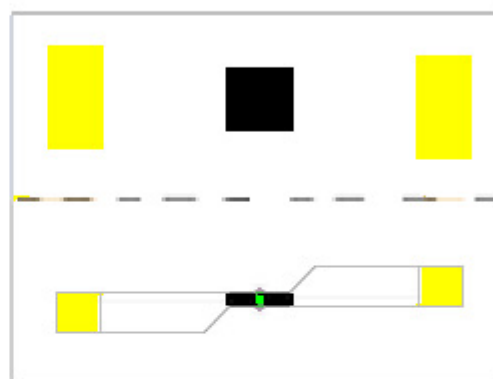
13





Rear Prop

20

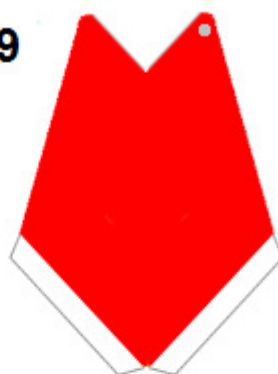


a 

b 

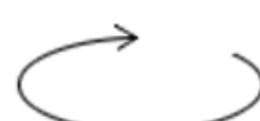
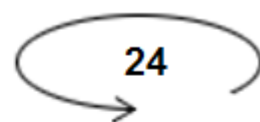
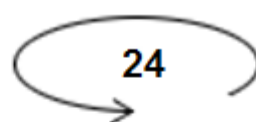
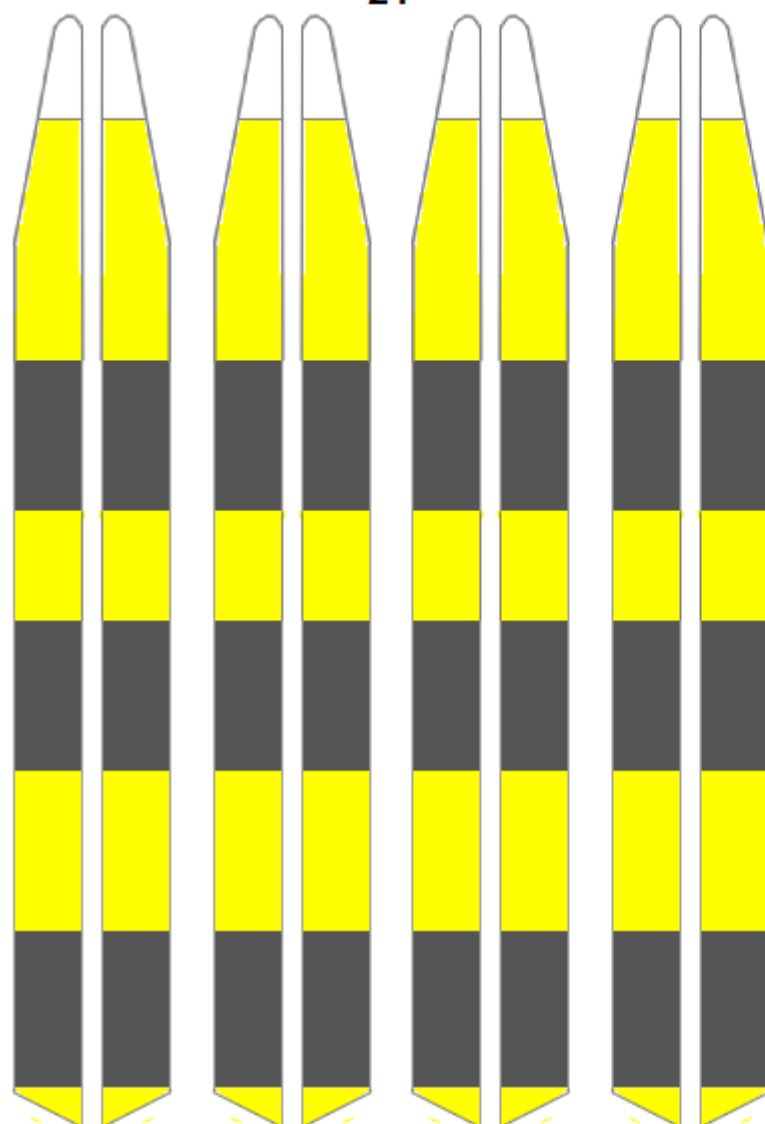
Friction Shaft Roll 'a' around a cocktail stick, gluing the paper but NOT to the stick. When dry, continue with 'b', gluing it to itself only. When dry, remove the 2 interlocking shafts (male and female), glue one to the prop, the other to the middle fin. Thus, the prop can be rotated.

19



Insert card for strength

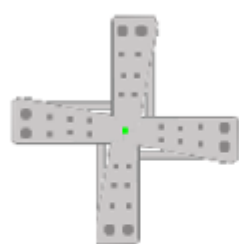
21



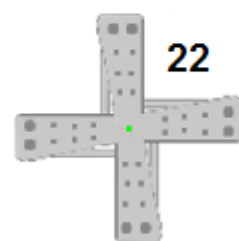
Skids

Roll around a 4mm diameter rod, then glue. Flatten.

23



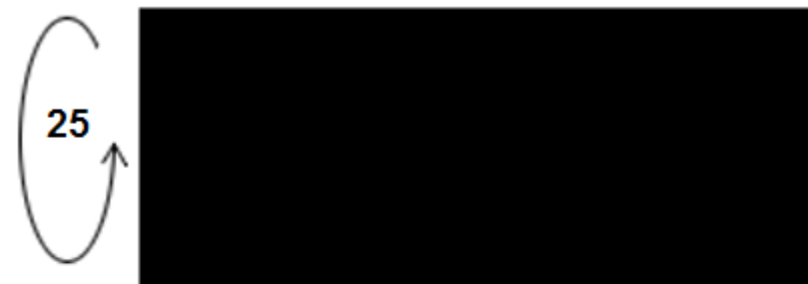
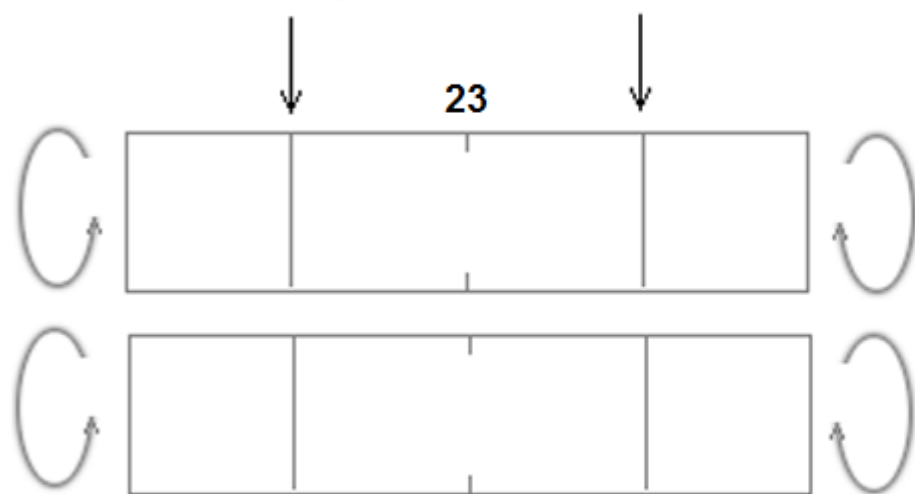
22



make 3x thick

Under carriage, etc.

Roll/glue each of 23 round a cocktail stick, and 'crack' at the arrowed positions, to give the correct form (below).

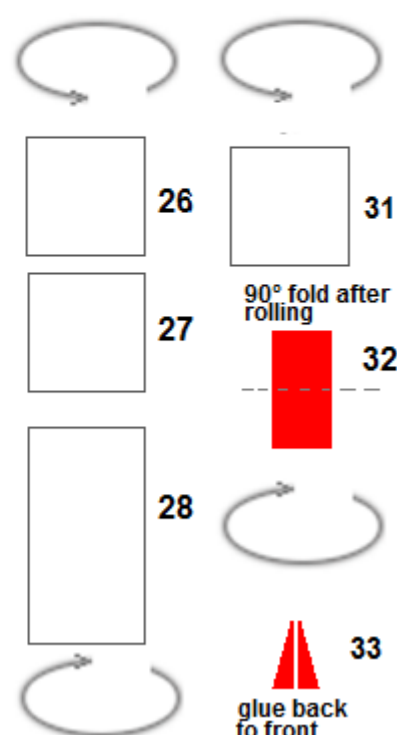


Template for part 23



Print on 80-90g paper

Aerials roll around pin



Parts 25: Roll/glue around cocktail or barbecue sticks, round the ends and felt-pen blacken.

Handles roll around pin

