



<http://www.canon.com/c-park/en/>



View of completed model

Japanese beetle

Editor:  THE NATIONAL SCIENCE MUSEUM
国立科学博物館

Scientific name: *Trypoxylus dichotomus*. Japanese beetles are found in Northern Honshu, Okinawa, the Korean Peninsula, China, Taiwan, and Indochina. Japanese beetles are also found as an introduced species in Hokkaido. A subspecies called the Okinawa beetle is found on the main island of Okinawa. Another subspecies, the Kumejima beetle, is found on the Kume islands.

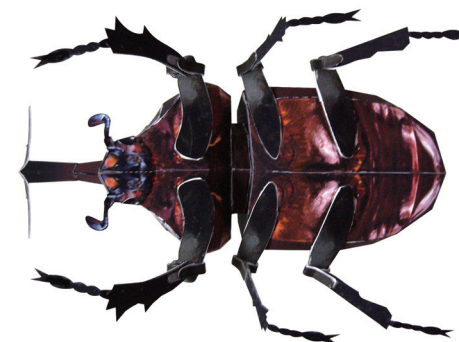
Male Japanese beetles are 30-80 mm in length; females measure 30-52 mm. Adult males have a four-point horn extending from the head and a two-point horn extending from the thorax. Adult beetles are considered a sign of summer, and live for a brief 1-2 months during that season. Nocturnal, the adult beetles spend the day hiding under fallen leaves and leaf mulch. They feed on sap from sawtooth and *Quercus* oaks.

*This model was designed for Papercraft and may differ from the original in some respects.

■ Parts list(pattern):Three A4 sheets(No.1 to No.3)

■ No. of Parts:64

*Build the model by carefully reading the Assembly Instructions, in the parts sheet page order.



Japanese beetle: Pattern

Canon ® is a registered trademark of Canon Inc. © Canon Inc. © Y. Watanabe

Canon

