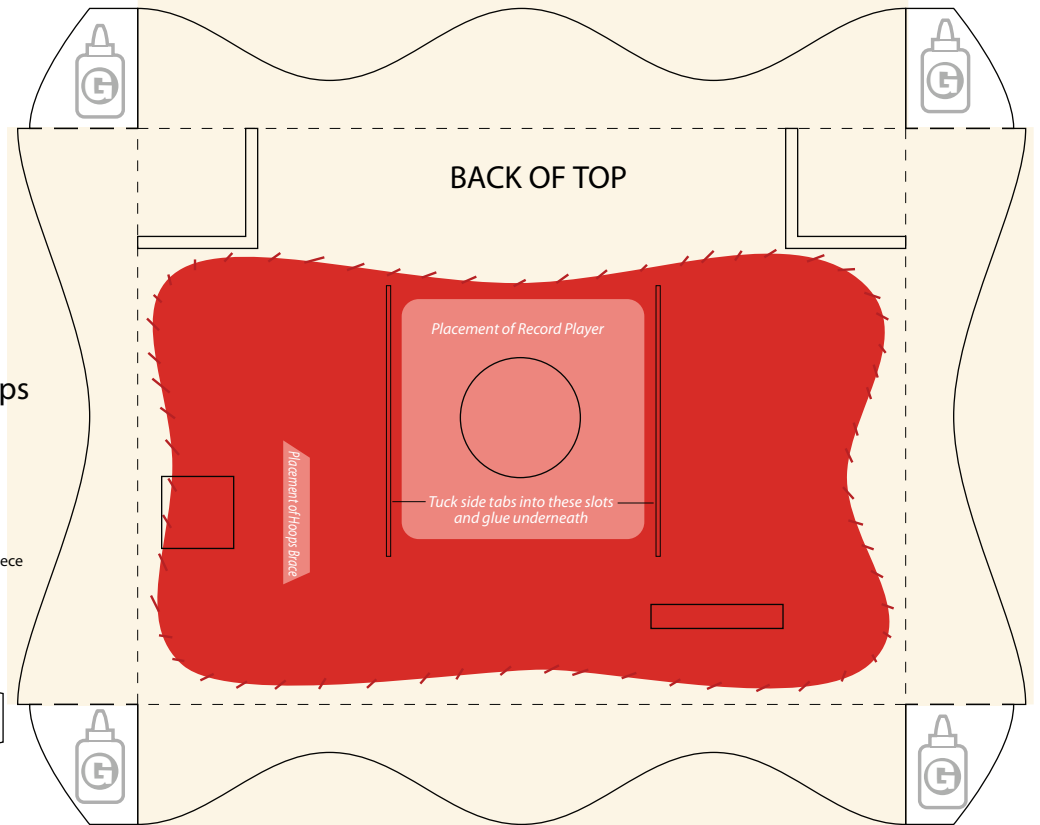
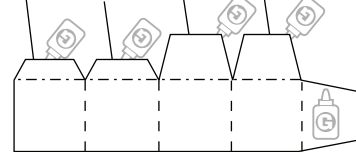
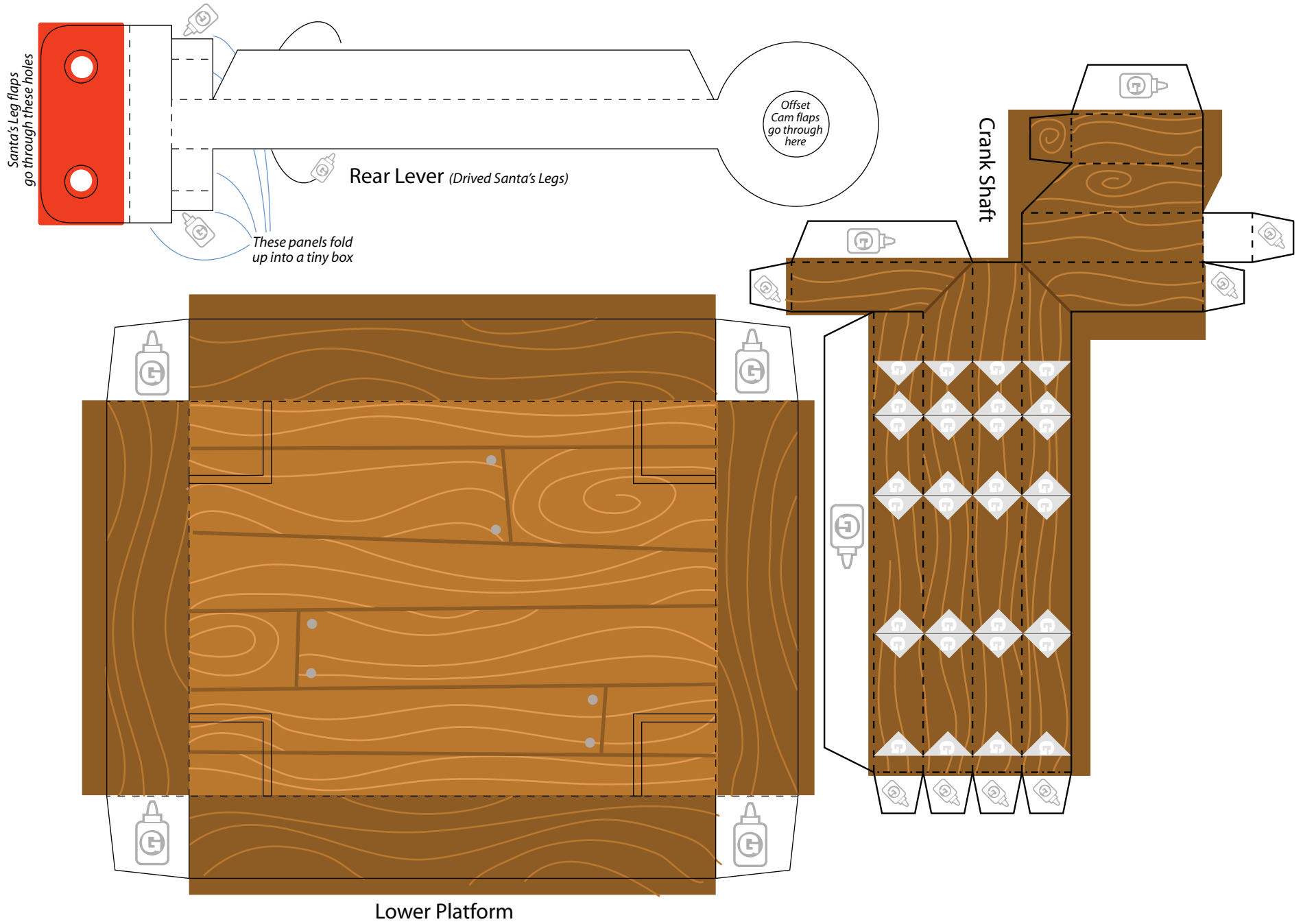
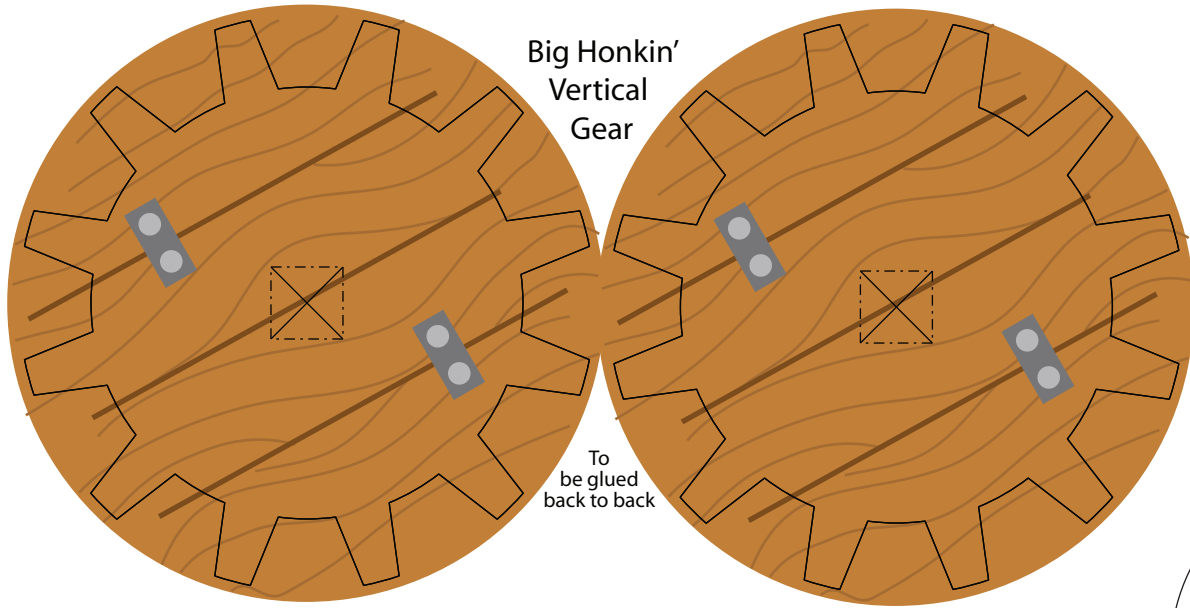


These tabs are glued to the underside of the floor piece with the shorter tabs placed next to the edge and the front, left column.

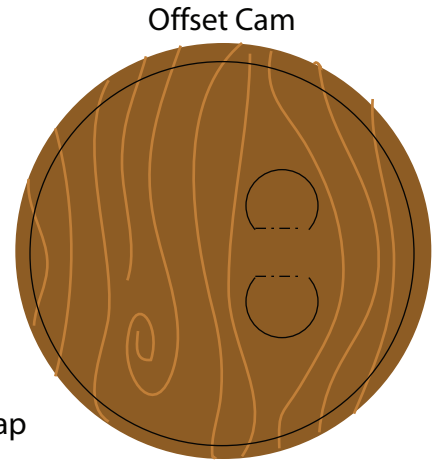




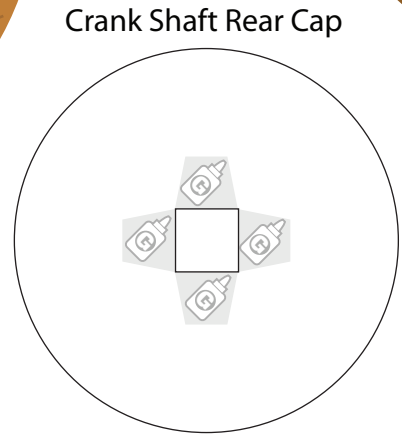


Big Honkin' Vertical Gear

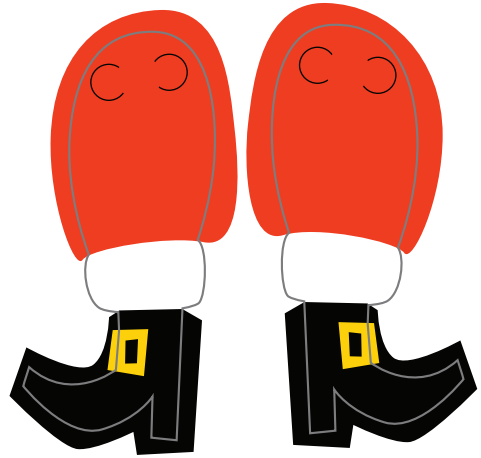
To be glued back to back



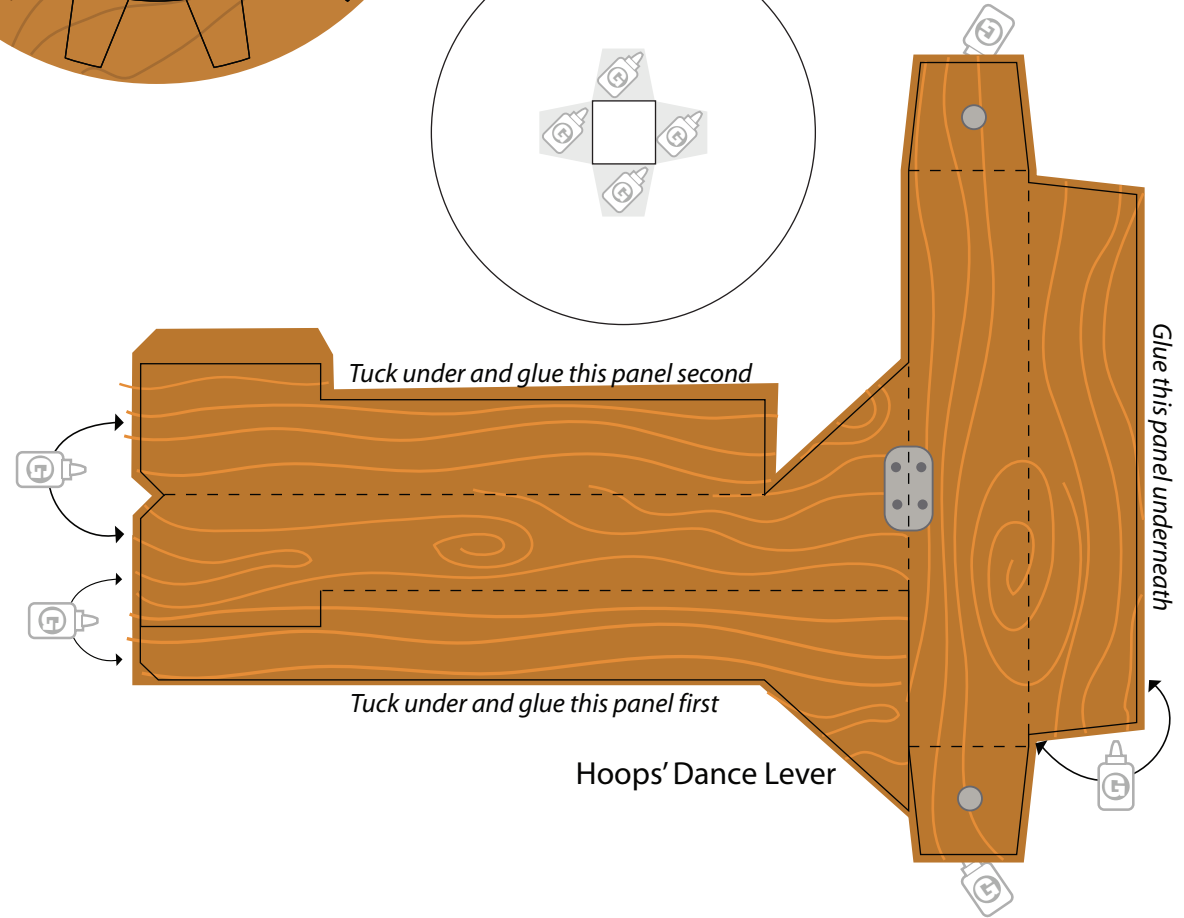
Offset Cam



Crank Shaft Rear Cap



Santa's Legs

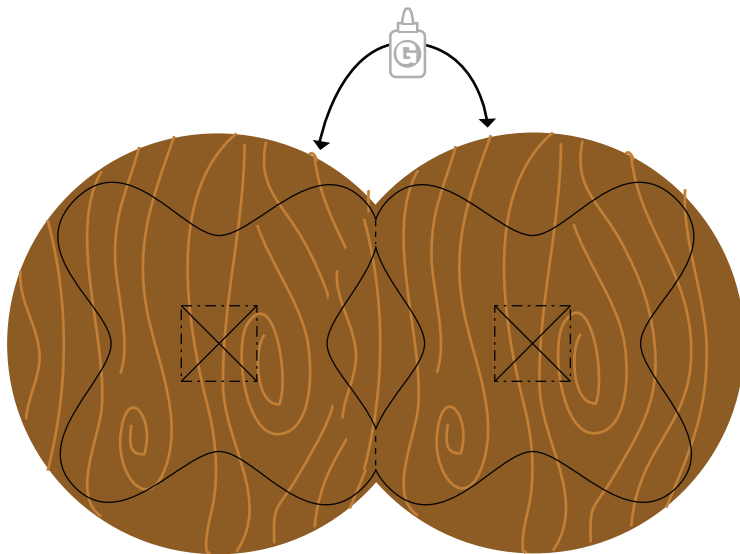
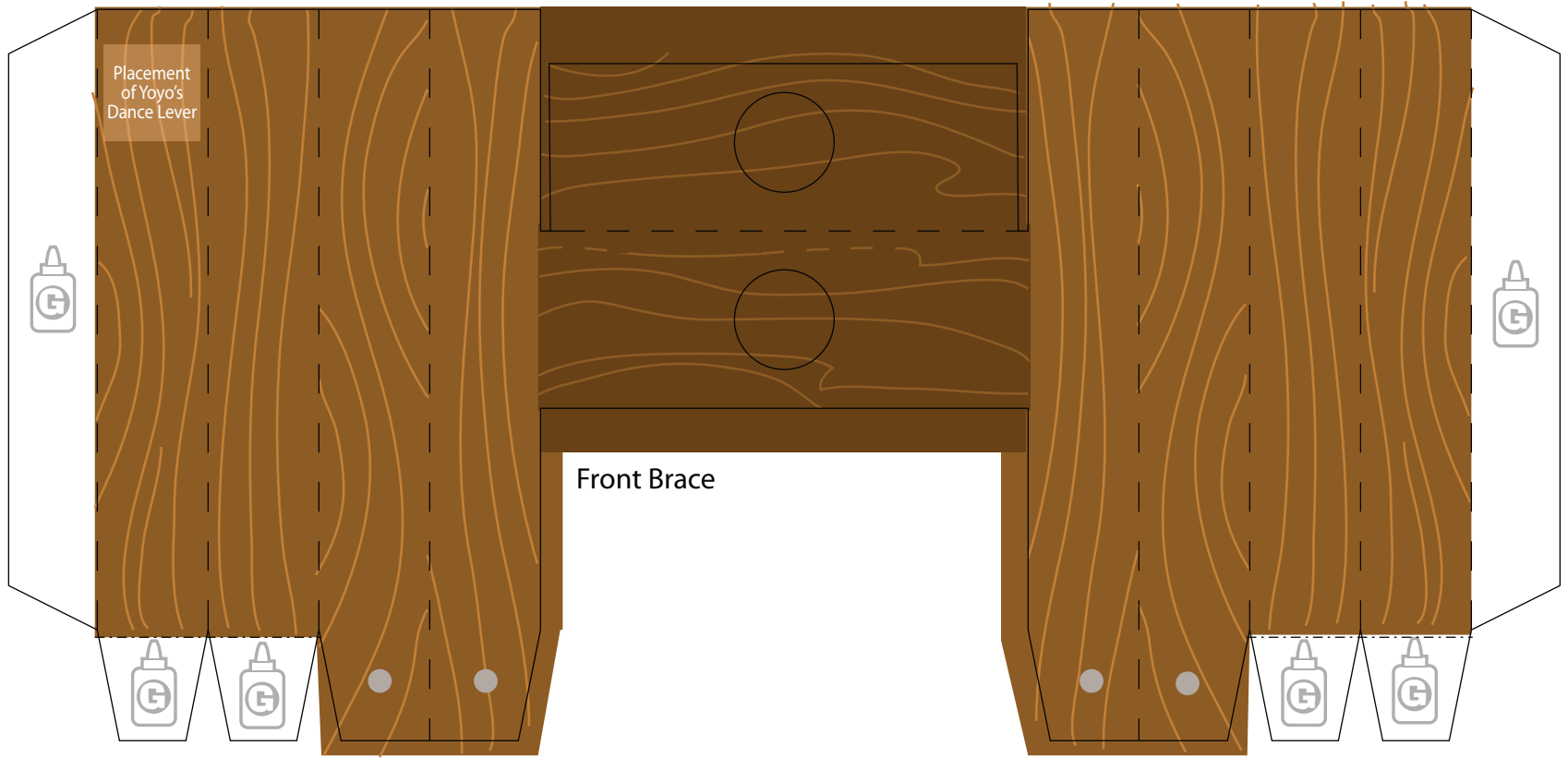


Tuck under and glue this panel second

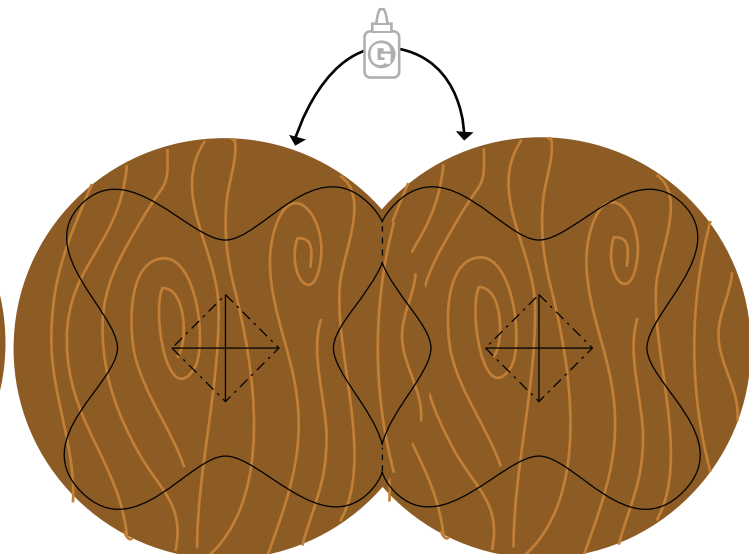
Tuck under and glue this panel first

Glue this panel underneath

Hoops' Dance Lever



Yoyo's Dance Cam



Hoops' Dance Cam

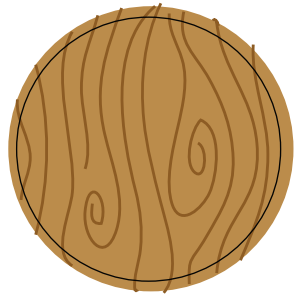
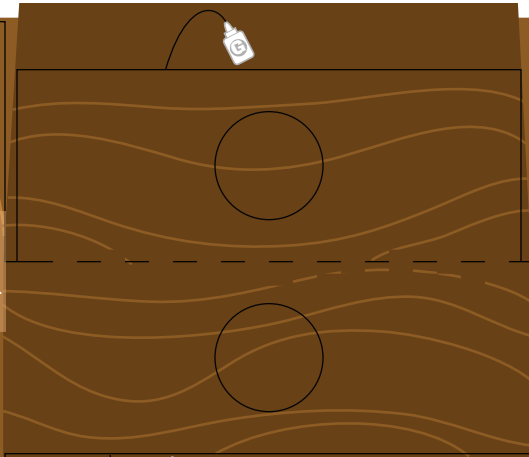
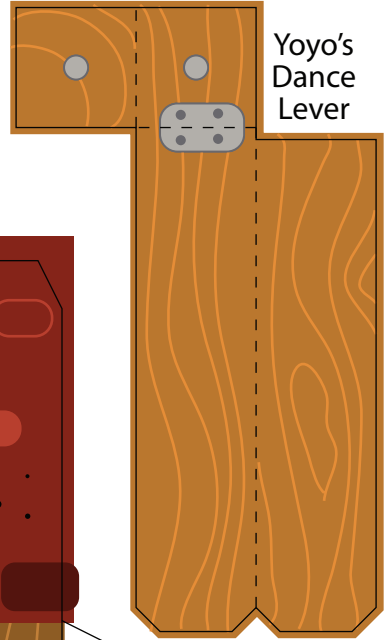
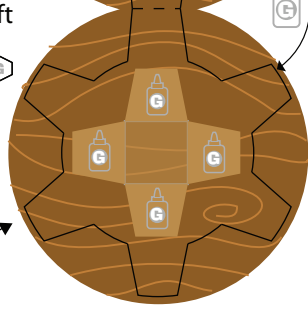
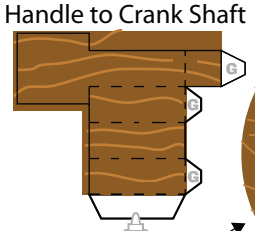
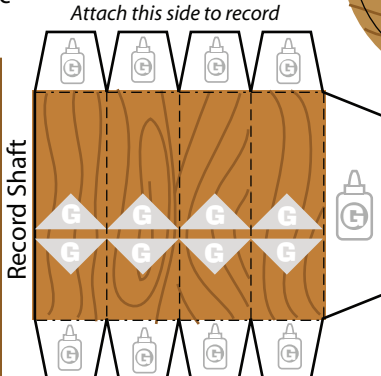
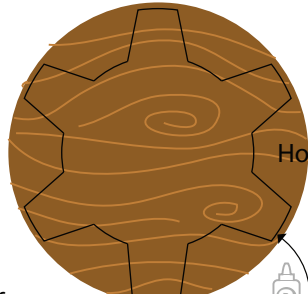
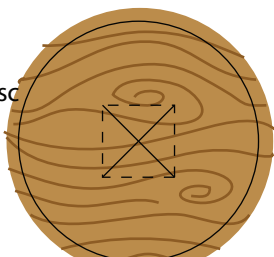
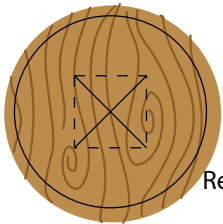
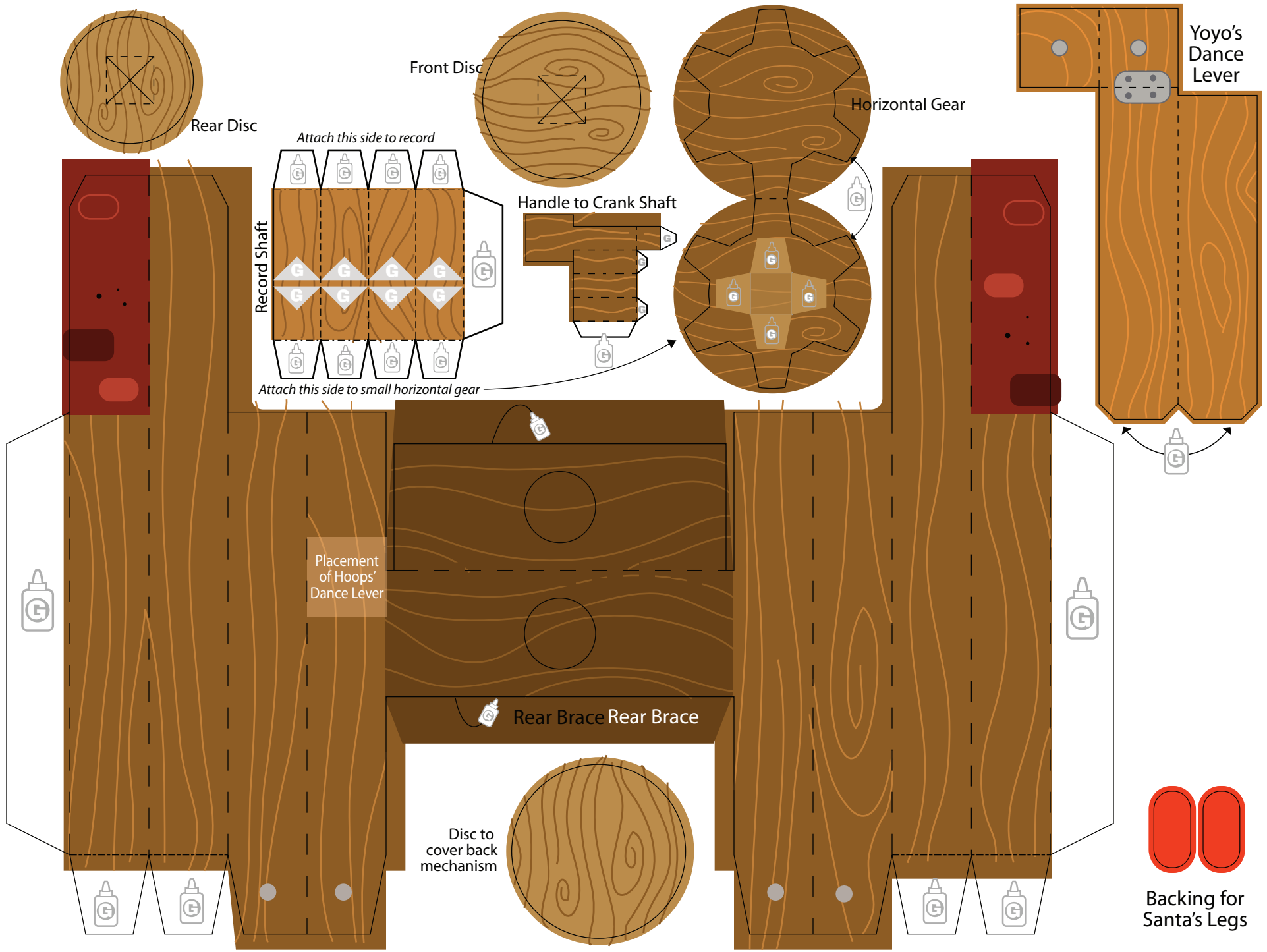
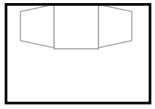


Plate for bottom of Piddle's Body

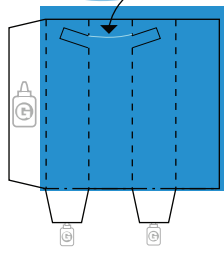


(this end points toward the rear of the toy)

Fire, Good!



Gently glue Piddle's little head here.

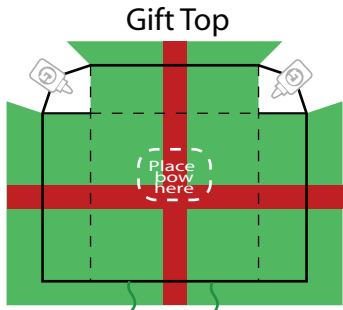
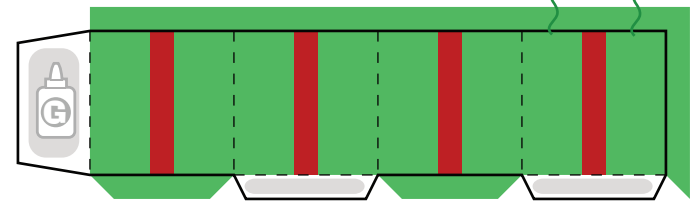


Piddle's Head (obviously)



Gift Base

Placement of thread "hinges"

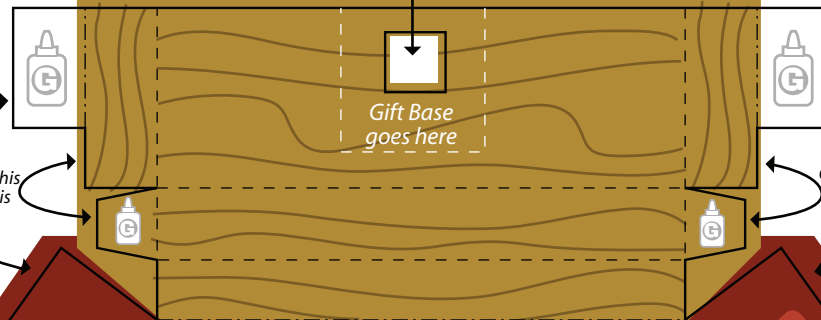


Gift Top

Place bow here

Placement of thread "hinges"

Hole for Channel for Piddle's Body (glue tabs underneath mantle - short tab to the back)



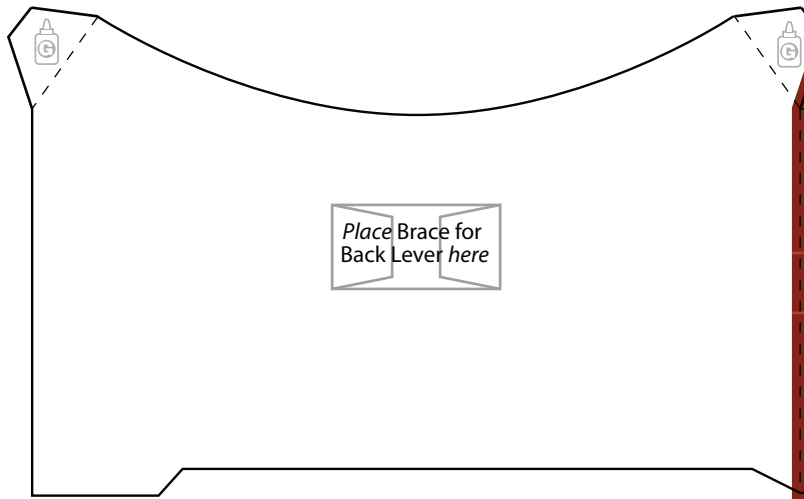
Glue this to this

Glue this to this

Gift Base goes here

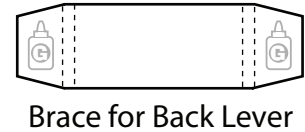
Glue this to this

Glue this to this

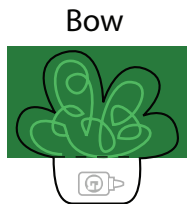


Place Brace for Back Lever here

Glue this to that spot way over there on the left



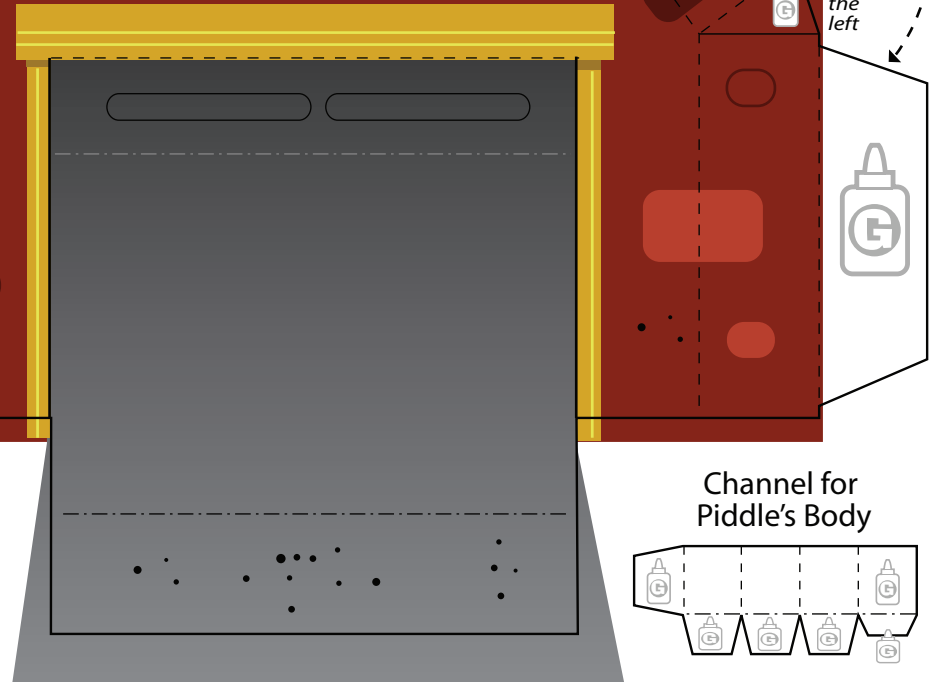
Brace for Back Lever



Bow



Stockings



Channel for Piddle's Body

