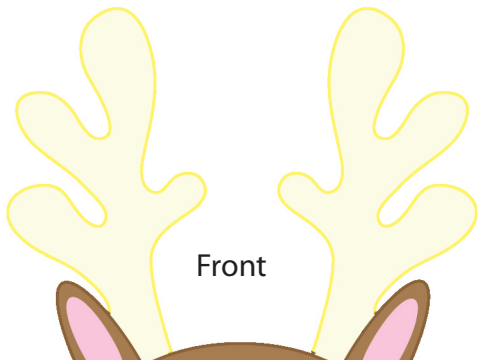


CHRISTMAS SERIES

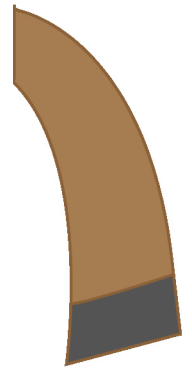
Rudolph



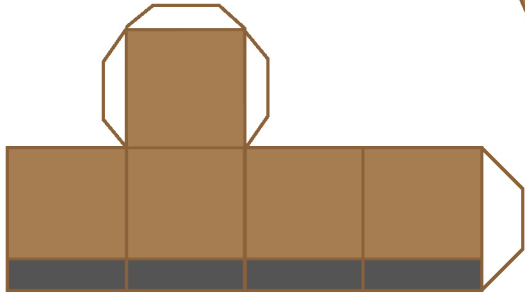
Front

Arm

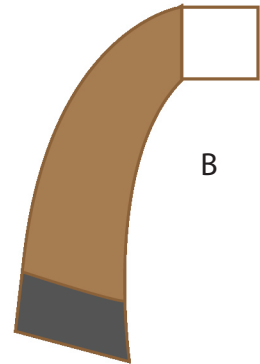
A



Foot

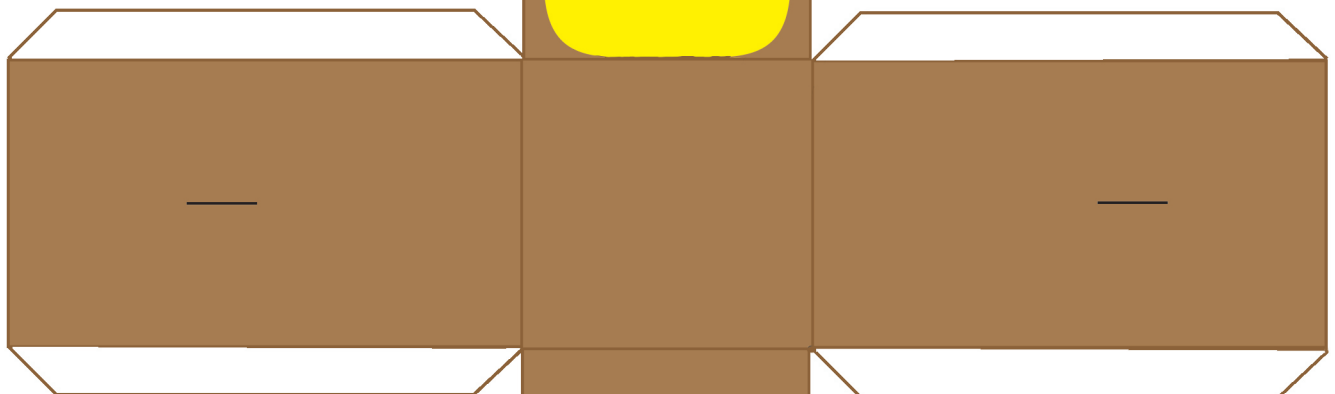


B



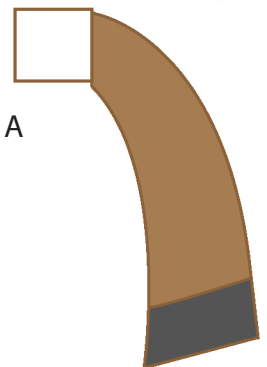
Side

Side

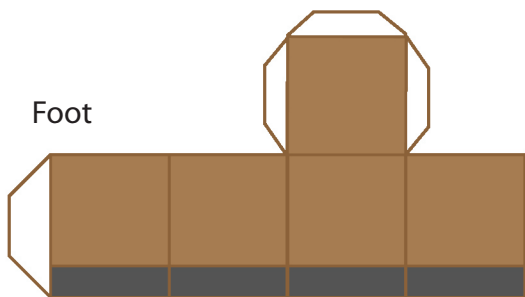


Arm

A

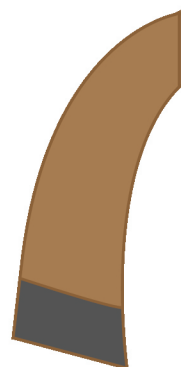


Foot



Back

B



1) Score along fold lines and cut out, cut out slot for arms on the sides.

2) Stick a and b back to back to form the arms.

3) Put tab for arms through slots cut out earlier.

4) Glue together.

5) Stick feet onto the bottom of the model

www.samanthaeynon.com

little Gangee

©samantha eynon 2009