



UNDERWORLD WETSUIT

instruction manual



step 1

glue

rubber cutting mat

parts (printed on thicker paper)

toothpick

sharp knife

small metal rod



First of all, you will need to print the parts (preferably on thicker paper, I use 200 gsm myself). To cut out the parts, you need a sharp knife, and to glue the parts together, you will need glue. Everything else is just to make building the model easier, and you can use anything you like of course. ;o)

step 2

part 2

part 1

To start building the actual model, cut out and pre-shape parts 1 and 2. Glue the edges together to make them into cylinders, and then glue them together like so.

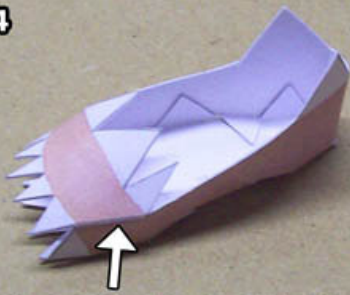
step 3

part 4

part 3

Continue by glueing on parts 3 and 4 to make the rest of the leg.

step 4



To make the foot, first bend and glue the side of the foot around the bottom, and then glue the "bridge" at the front across.

step 5



After pre-shaping part 6, glue the two ends together and then glue it to the foot like so.

step 6



And now for the toes. Each separate toe is basically a closed cylinder. They're pretty small, but if you pre-shape them around a toothpick*, they won't be very difficult to make.

Start with the big toe (part 7) and glue it on as shown here. Fold the small glueing tab so that it sticks out forward. That way you can use it to glue on the next toe.

*see <http://www.youtube.com/watch?v=3ph7ayEs1RA> for a video tutorial

step 7



The other toes go together and glue on in much the same way. In this case part 8...

step 8



step 9



step 10



...and finally part 11 (which does not have a glueing tab on its side because it's the last one ;o)

Once the toes are attached, glue the foot to the leg.

step 11



Now repeat these steps for parts 12-22 to make the other leg (if you're worried about mixing up left and right, remember that right is the side where the big toe is on the left, and vice versa ;o)

step 12



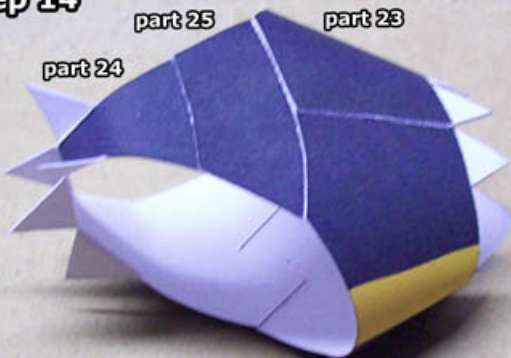
Now glue the two ends of part 23 together to make it into the ring shape you see here.

step 13



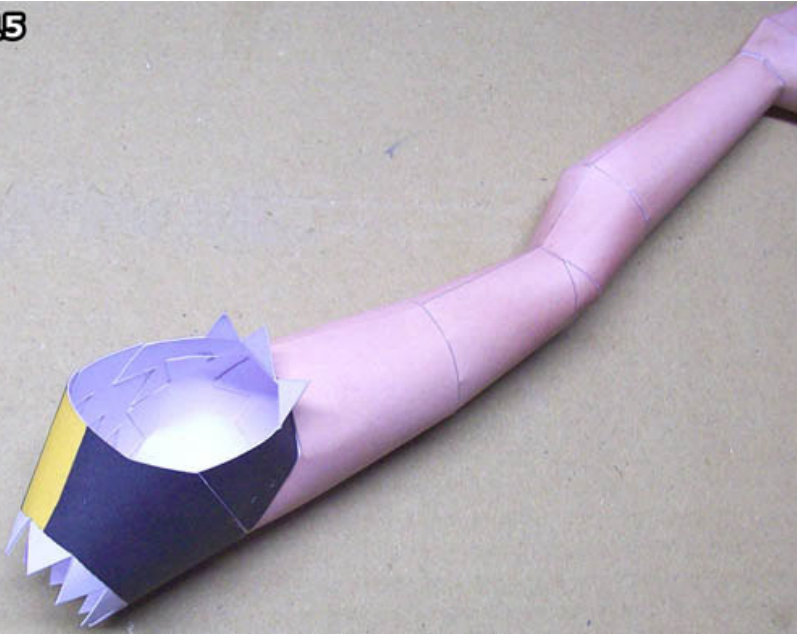
Now glue part 24 to the front as shown here (the parts are positioned on the template as they should be glued together as much as possible; you'll find that the other end will be to small anyway ;o)

step 14



...because that end needs to be glued to part 25. After that's done, bend parts 24 and 25 over to the back, and attach the top of part 25 to the back of part 23.

step 15



Now it's just a matter of glueing on the legs one at a time. Use the hole at the top and on the opposite side to apply pressure to the glueing tabs from the inside.

step 16



Of course when glueing on the second leg, you will only be able to use the hole at the top. ;o))

step 17



On part 26, it's important to make a sharp valley fold in the middle, and to pre-shape the two shades into curvacious cups.

step 18



Make the same sharp valley fold on part 27, and after pre-shaping it again, glue it to part 26.

step 19



The same goes for part 28.

step 20



Now first glue the two ends of part 29 together at the back. Then glue on the parts you assembled in steps 17-19. Take your time to follow the shape as good as you can.

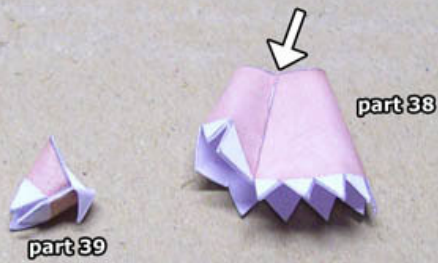
step 21



To glue on part 30, I found it easiest to first glue the two ends together at the back, and then first attach the front...



step 28

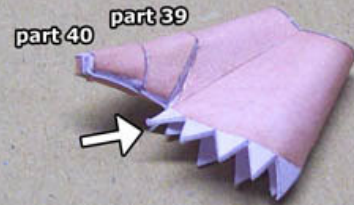


To make the handpalm, make a strong valley fold along the big glueing tab on part 38 and pre-shape the part before glueing together the two ends to get the shape as shown here.

Like the toes, part 39 goes together easily if you fold/curve it around a toothpick*.

*see <http://www.youtube.com/watch?v=3ph7ayEs1RA> for a video tutorial

step 29



Glue part 39 to the hand as shown here (don't forget to fold over the small glueing tab, just like with the toes). Then Cut out, assemble and glue on part 40.

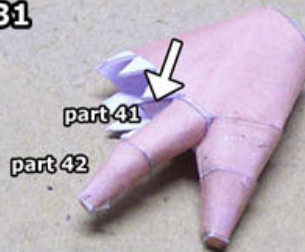
step 30



Assembling the fingers is a lot like assembling the toes, only this time, there are two small cylinders to make* for each finger. Start with parts 41 and 42.

*see <http://www.youtube.com/watch?v=3ph7ayEs1RA> for a video tutorial

step 31



Now glue this finger next to the thumb (notice that I just turned over the part, nothing more so)

step 32



keep assembling the fingers and glueing them on one at a time...

step 33



Parts 45 and 46...

step 34



...and finally, parts 47 and 48.

step 35



Now simply glue the hand to the arm...

step 36



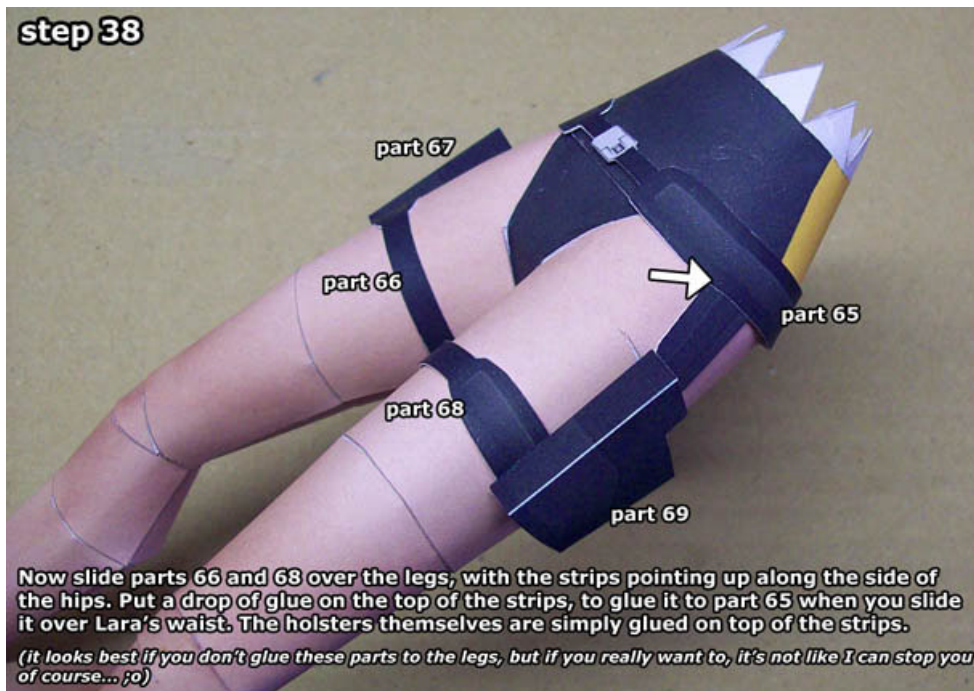
Now repeat steps 25-35 for parts 53-64 to make the other arm.

step 37



The parts for the holsters shouldn't be too difficult to make I think. ;o)

step 38



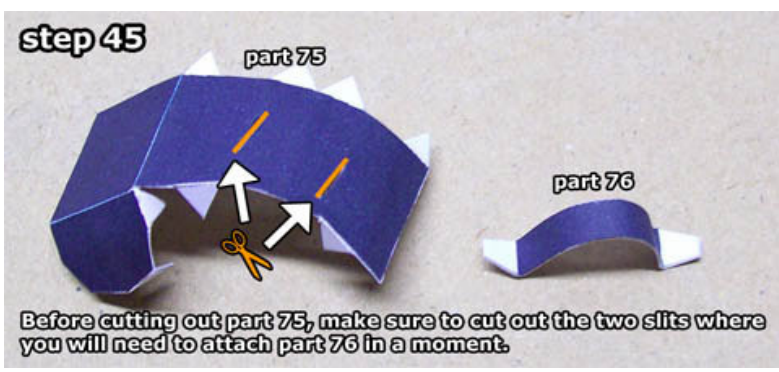
Now slide parts 66 and 68 over the legs, with the strips pointing up along the side of the hips. Put a drop of glue on the top of the strips, to glue it to part 65 when you slide it over Lara's waist. The holsters themselves are simply glued on top of the strips.

(it looks best if you don't glue these parts to the legs, but if you really want to, it's not like I can stop you of course... ;o)

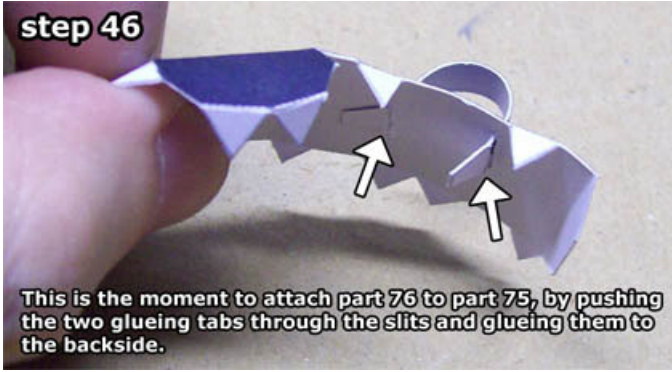
step 39



The guns are simply two small boxes glued on top of each other as shown here.



step 46



This is the moment to attach part 76 to part 75, by pushing the two glueing tabs through the slits and glueing them to the backside.

step 47



Now assemble the rest of part 75, and then cut out and glue on parts 77 and 78. The flap on part 78...

step 48



...will overlap the front. Now glue the backpack to the back of part 74.

step 49



The oxygen tanks are simple cylinders with a flattened coned on top.

step 50



Glue the cylinders to the sides of the backpack using a few drops of glue in the right places.

step 51



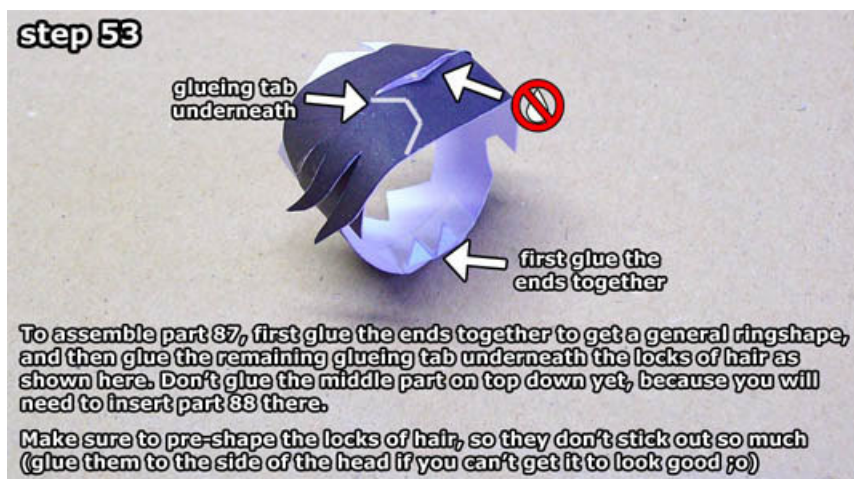
The easiest way to make the ears, is to pre-shape part 83, fold the ears forwards, and then glue the small strips around the ears like you see here.

step 52



Pre-shape and glue on parts 84-86.

step 53



To assemble part 87, first glue the ends together to get a general ringshape, and then glue the remaining glueing tab underneath the locks of hair as shown here. Don't glue the middle part on top down yet, because you will need to insert part 88 there.

Make sure to pre-shape the locks of hair, so they don't stick out so much (glue them to the side of the head if you can't get it to look good ;o))

step 54



Now glue this part of the hair to the head like so. Pay extra attention to the holes for the ears. (and still don't glue the middle part of the hair down yet! ;o)

step 55



If you want the locks of hair on part 88 to look good, it's best to exaggerate the pre-shaping (curl them a lot more than they actually need to be)

step 56



Now glue the glueing tabs of part 88 underneath the slit you left open on part 87. You don't *need* to glue the locks of hair to the face, but if you don't like the way they stick out, you *can* of course.

step 57



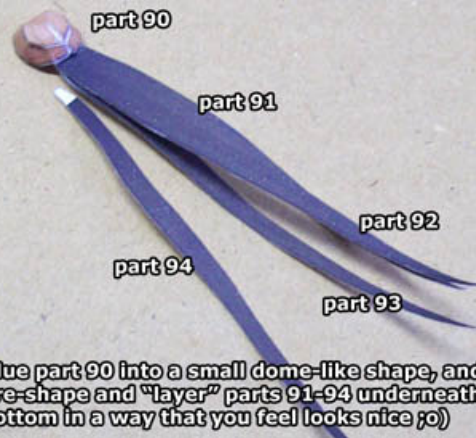
Now cut out part 89 and glue the ends together so you end up with the shape you see here...

step 58



...and then glue it to the back of Lara's head. Use the holes on the bottom of the head and the back of the hair and a toothpick or small rod to shape the head from the inside.

step 59



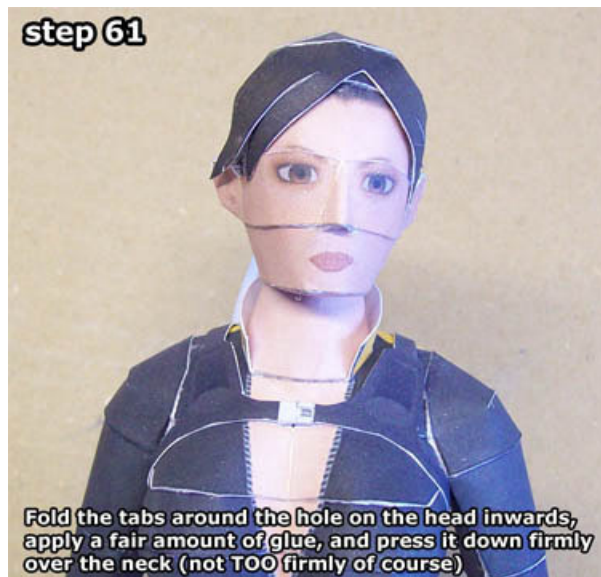
Glue part 90 into a small dome-like shape, and then pre-shape and "layer" parts 91-94 underneath the bottom in a way that you feel looks nice ;o)

step 60



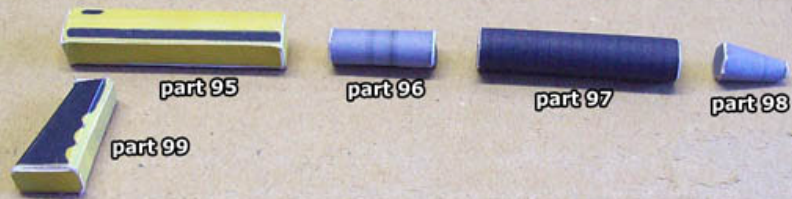
Now simply put some extra glue underneath the edges of part 90, and glue it over the hole on the back of the hair.

step 61



Fold the tabs around the hole on the head inwards, apply a fair amount of glue, and press it down firmly over the neck (not TOO firmly of course)

step 62



Lara's speargun is made up from several simple boxes, cylinders and cones (parts 95-99).

step 63



Glue them together and that's that: you're done! Simply place the speargun in the strap on the backpack. I hope you had fun building!