

Instrucciones Citroen 2CV.

CITROËN 2CV ①

切り取り — 山折り — 谷折り

Diagram 1 shows the main chassis layout with fold lines. Diagram 2 shows a cylindrical component being folded. Diagram 3 shows a rectangular component with fold lines. Photos show the assembly process: a white chassis is shown, and a black chassis is being assembled with a cylindrical component. A close-up shows the joint being glued.

接着せず、差し込んでからのりしろを開く

継ぎ目が表に来るように接着

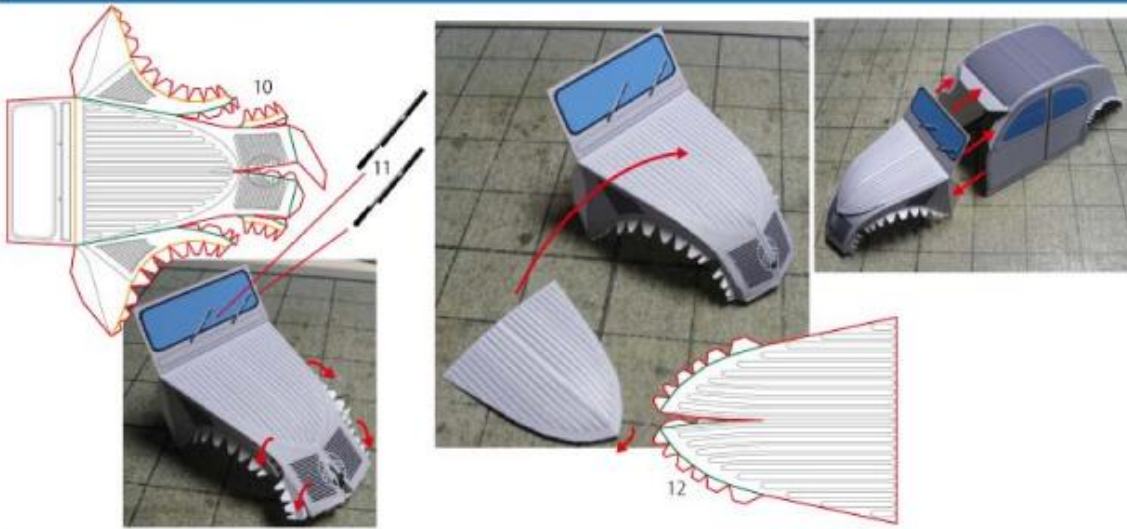
CITROËN 2CV ②

切り取り — 山折り — 谷折り

Diagram 4 shows a wheel with a hub. Diagram 5 shows a wheel with a hub and a tire. Diagram 6 shows a long, thin component with a serrated edge. Diagram 7 shows a cylindrical component with a hole. Diagram 8 shows a cylindrical component with a hole and a cap. Diagram 9 shows the body panels being attached to the chassis. Photos show the assembly process: a black chassis with wheels is shown, and a white body panel is being attached. A close-up shows the body panel being attached to the chassis.

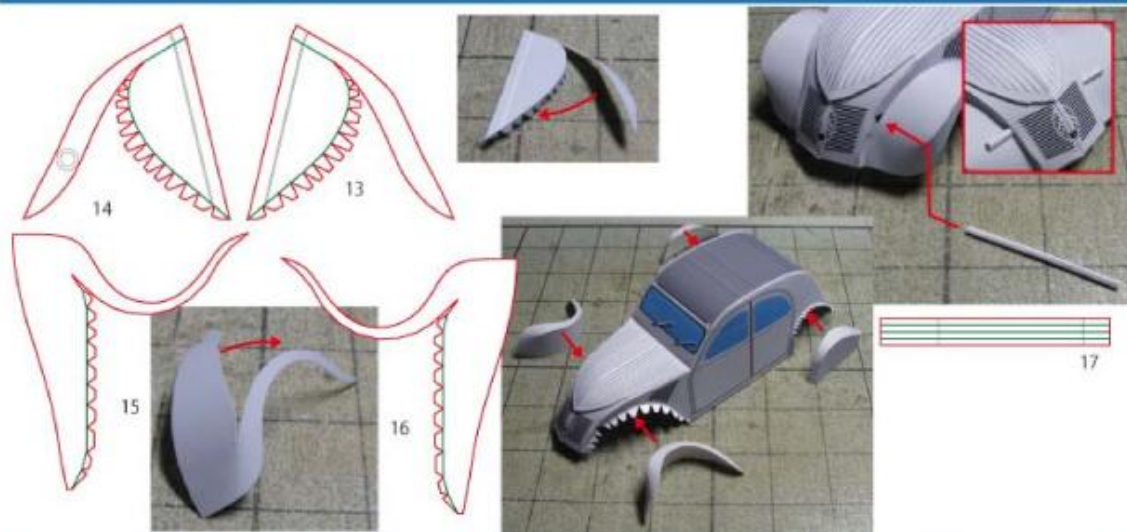
CITROËN 2CV 3

切り取り — 山折り — 谷折り



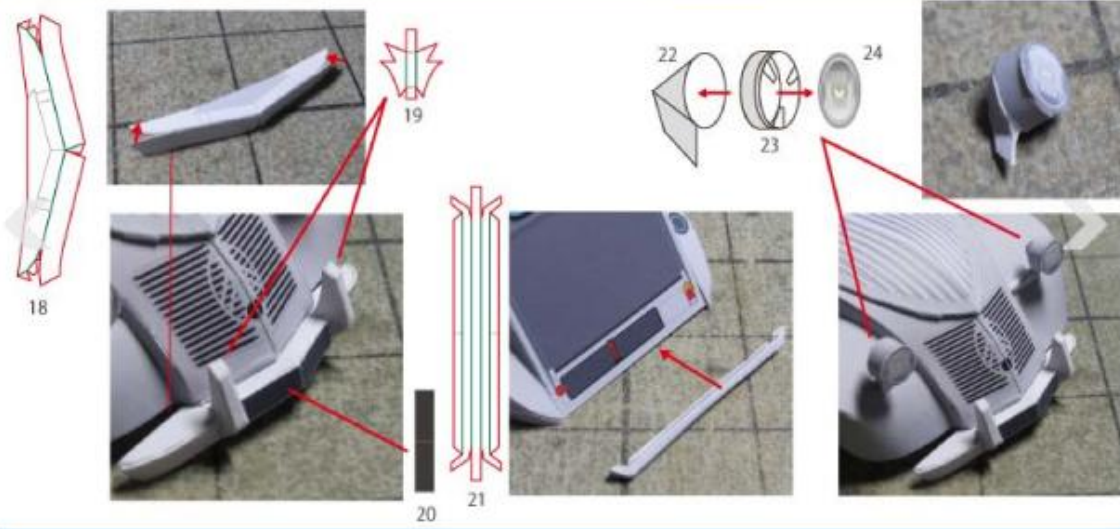
CITROËN 2CV 4

切り取り — 山折り — 谷折り



CITROËN 2CV 5

切り取り — 山折り — 谷折り



CITROËN 2CV 6

切り取り — 山折り — 谷折り

